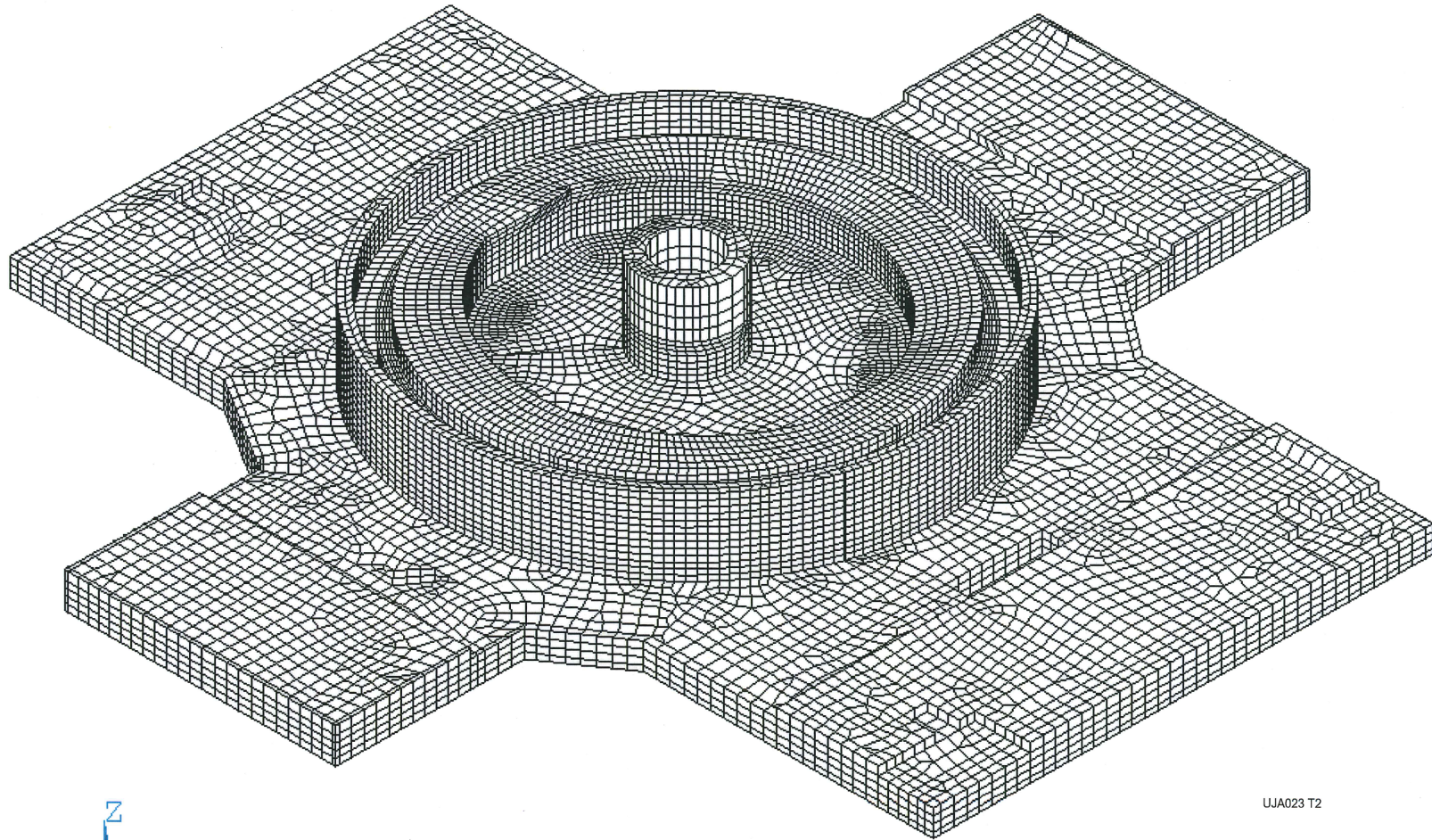
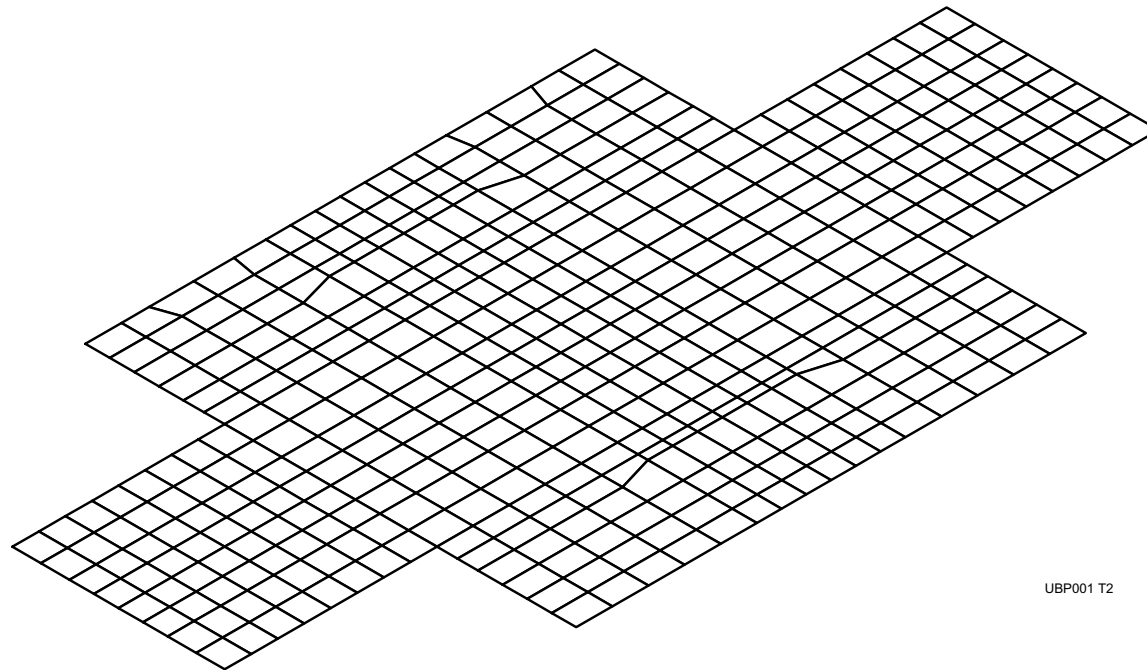


Figure 3.8-103—Nuclear Island Common Basemat Structure Foundation Basemat ANSYS Model



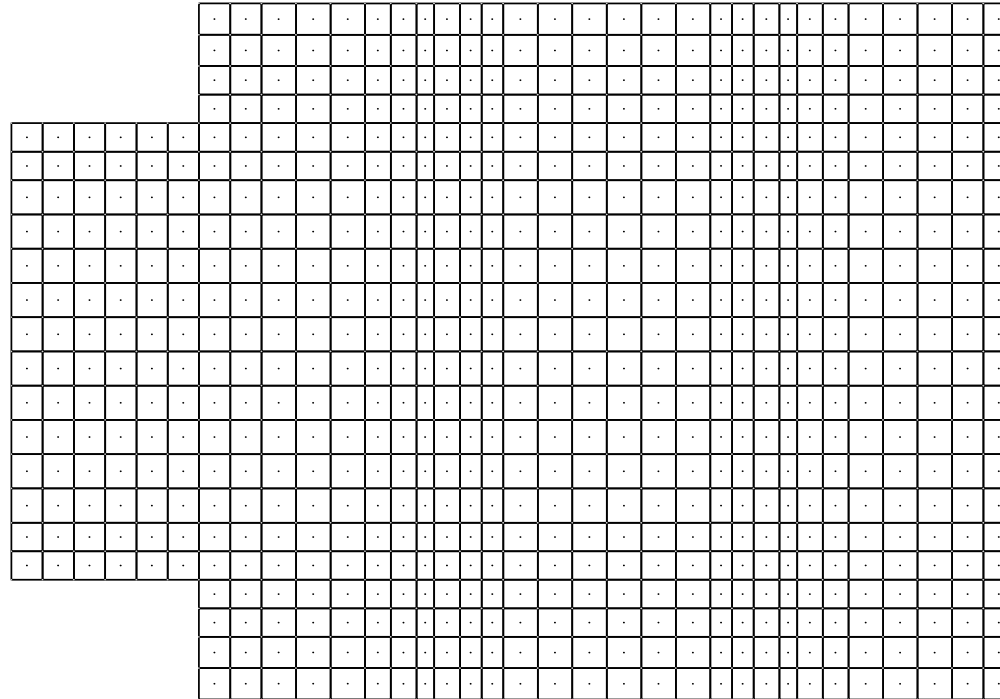
UJA023 T2

Figure 3.8-104—Emergency Power Generating Building Foundation Basemat Model



UBP001 T2

Figure 3.8-105—Essential Service Water Building Foundation Basemat Model



URB010 T2

Figure 3.8-106—Elastic Displacement for Soil Case 1u

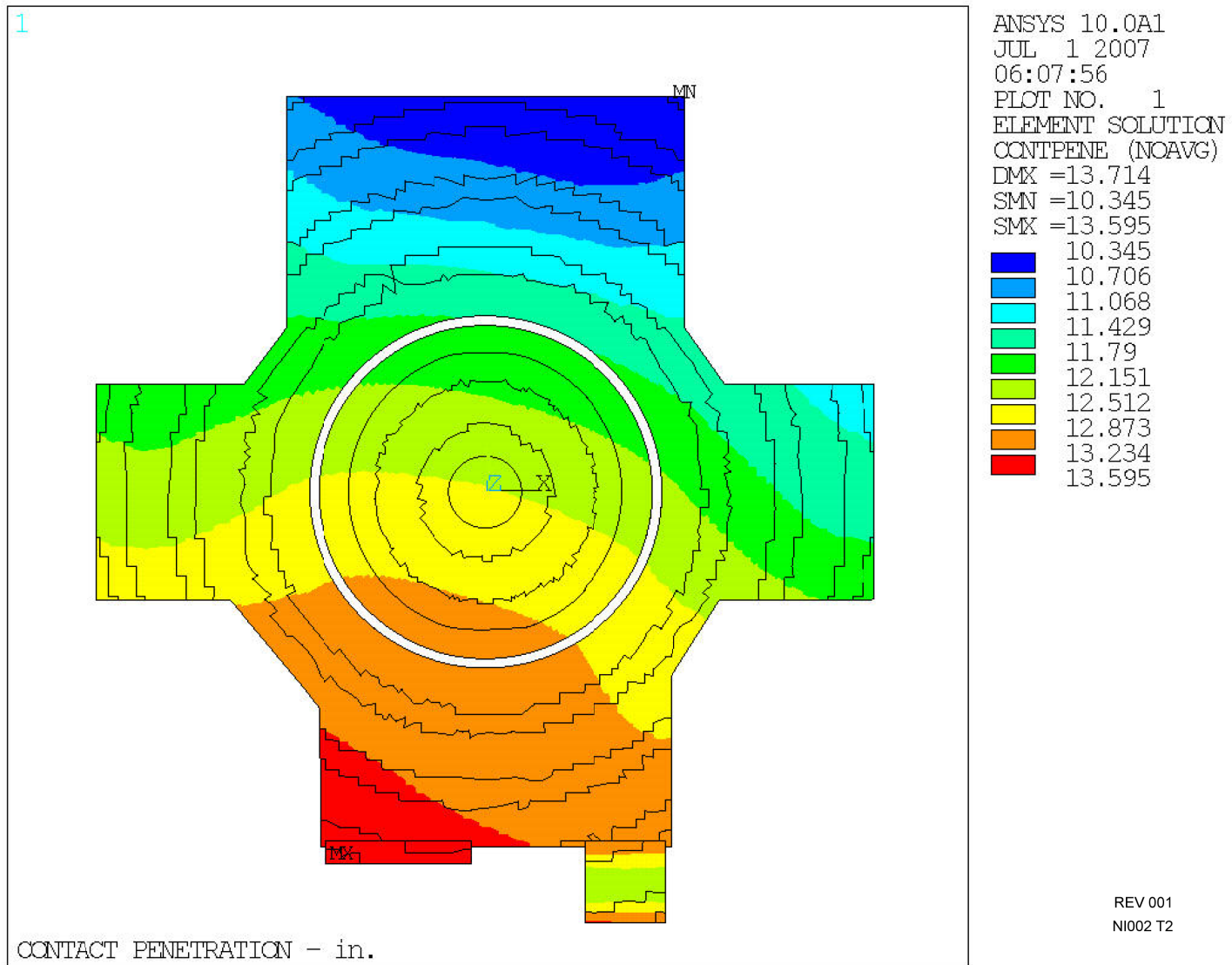


Figure 3.8-107—Elastic Displacement for Soil Case 2u

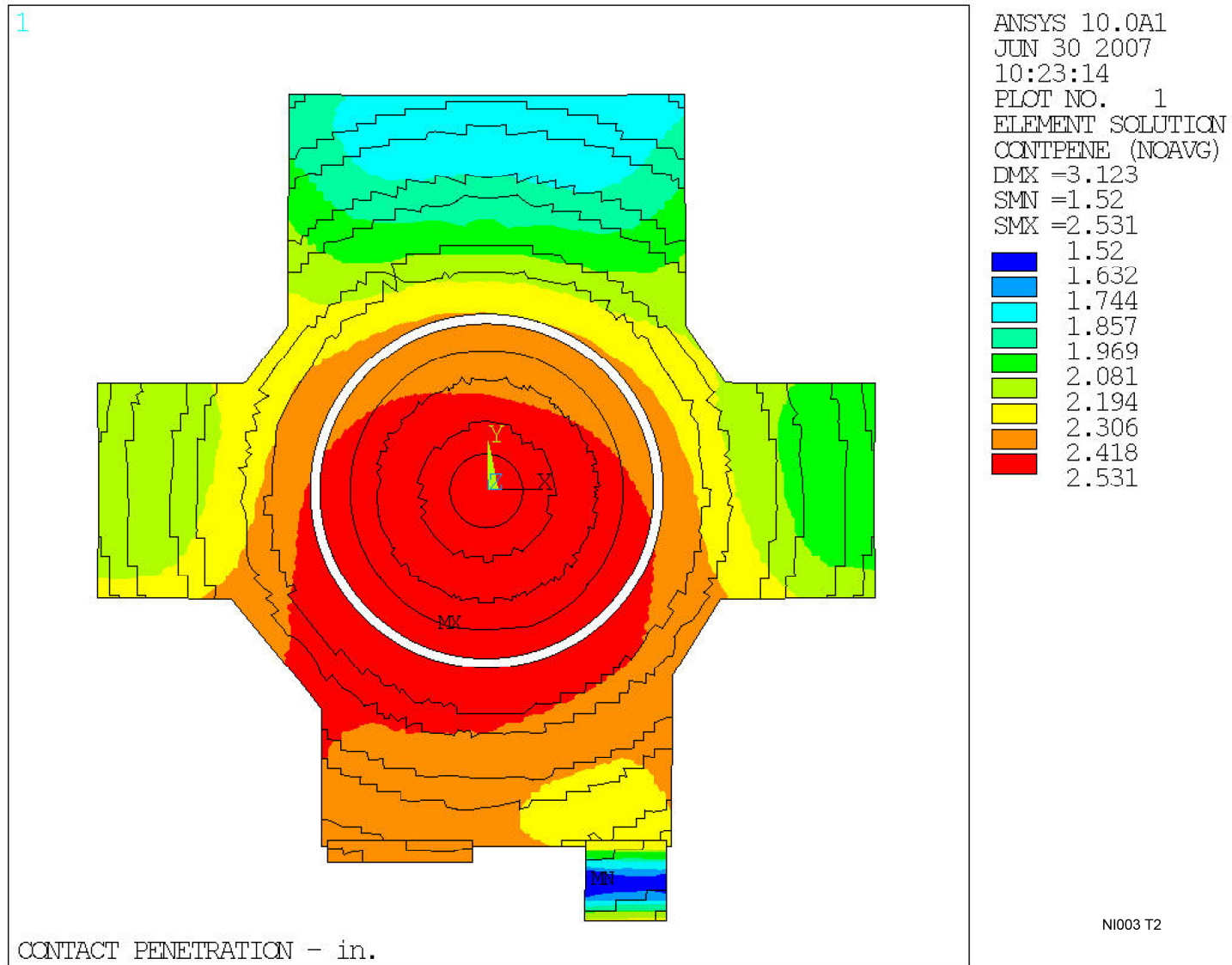


Figure 3.8-108—Elastic Displacement for Soil Case 1n2u

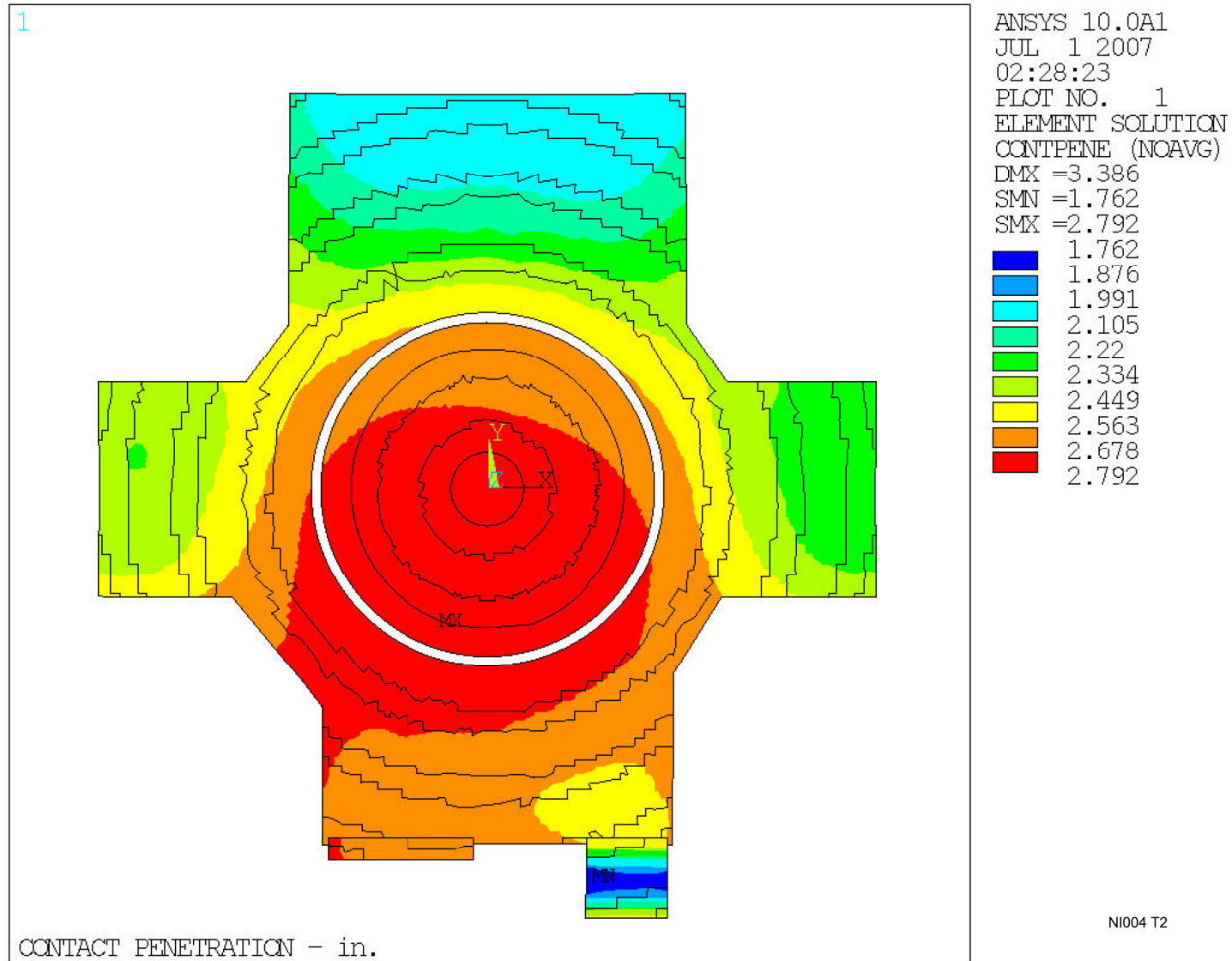


Figure 3.8-109—Elastic Displacement for Soil Case 3u

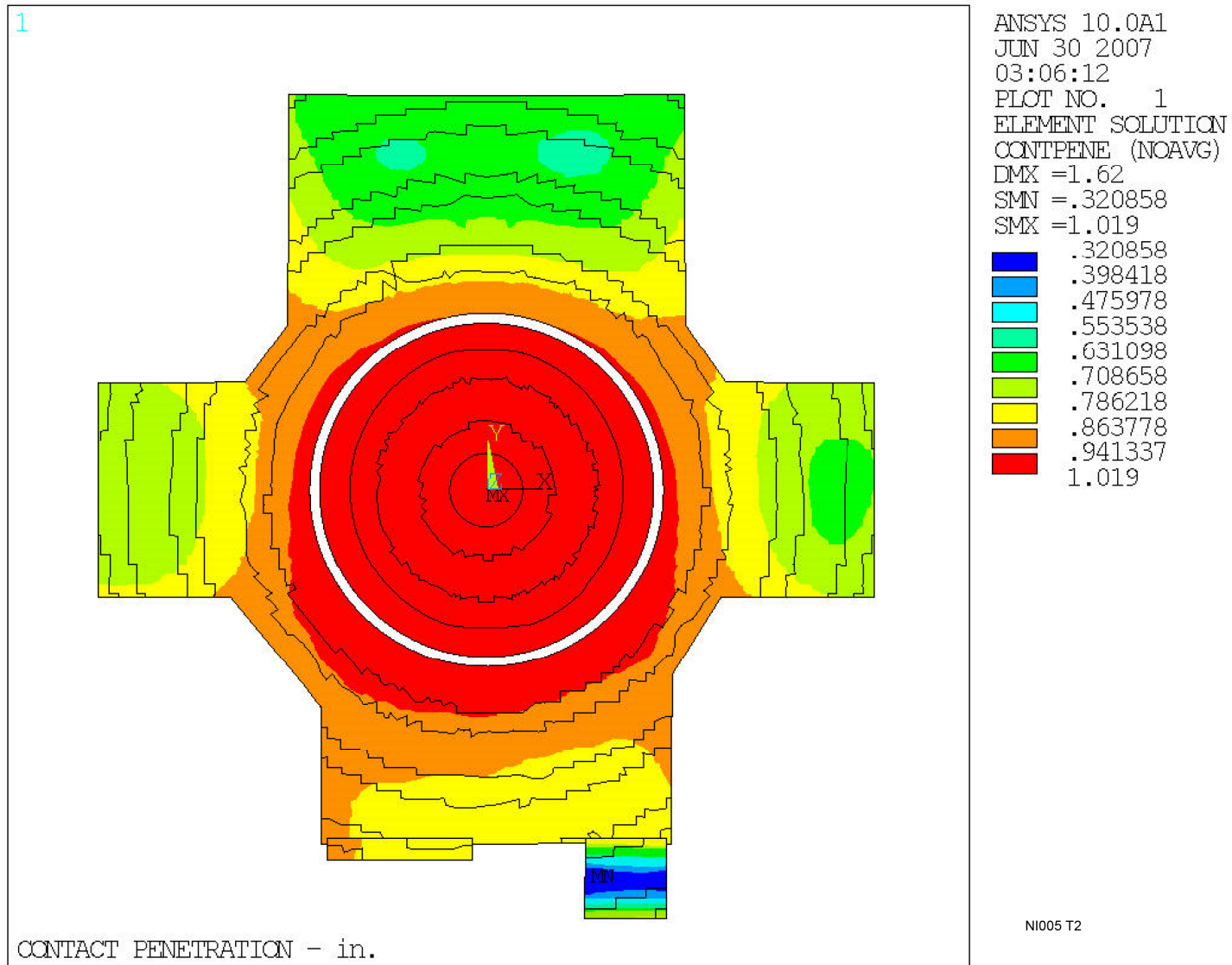


Figure 3.8-110—Elastic Displacement for Soil Case 4u

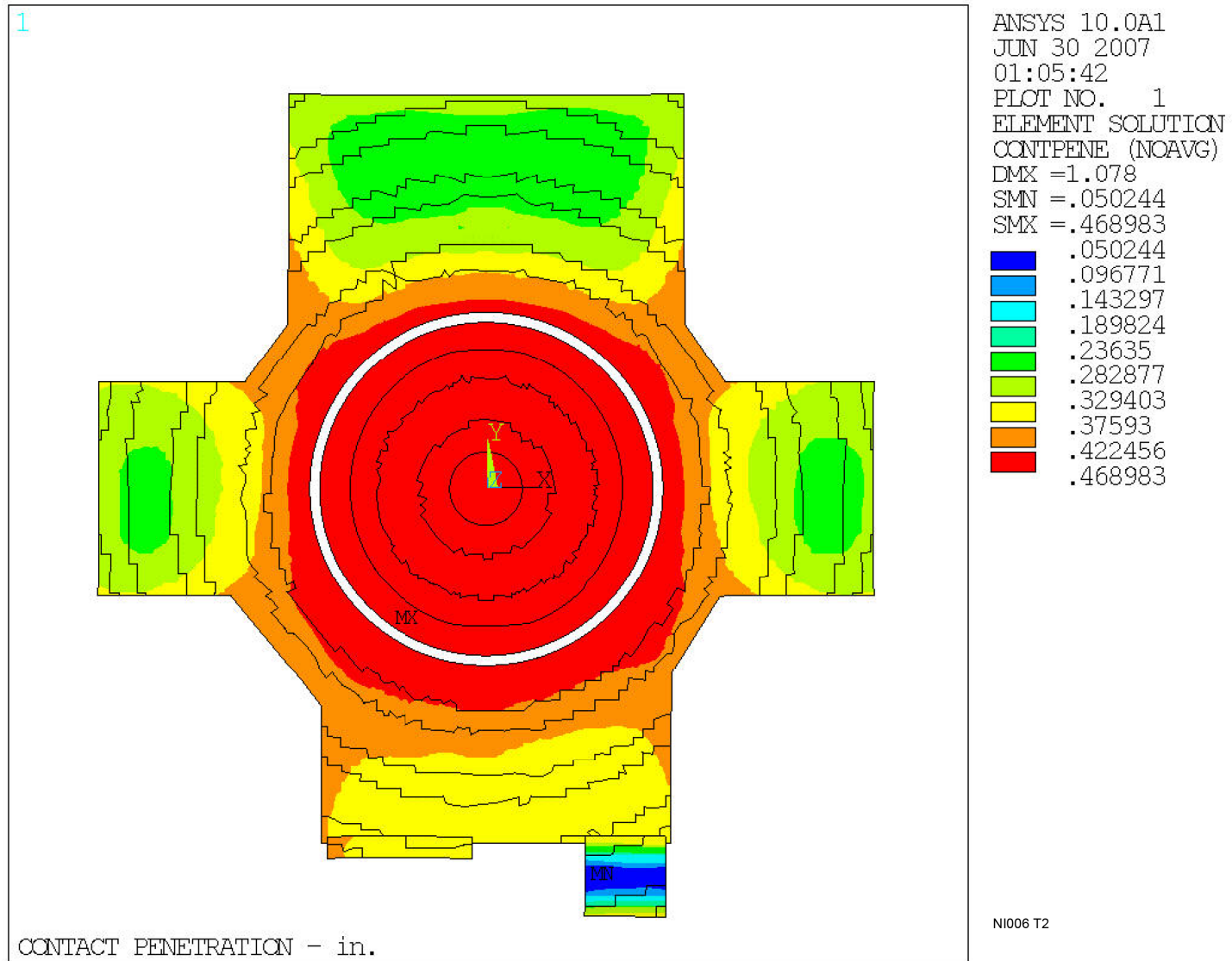




Figure 3.8-111—Elastic Displacement for Soil Case 5a

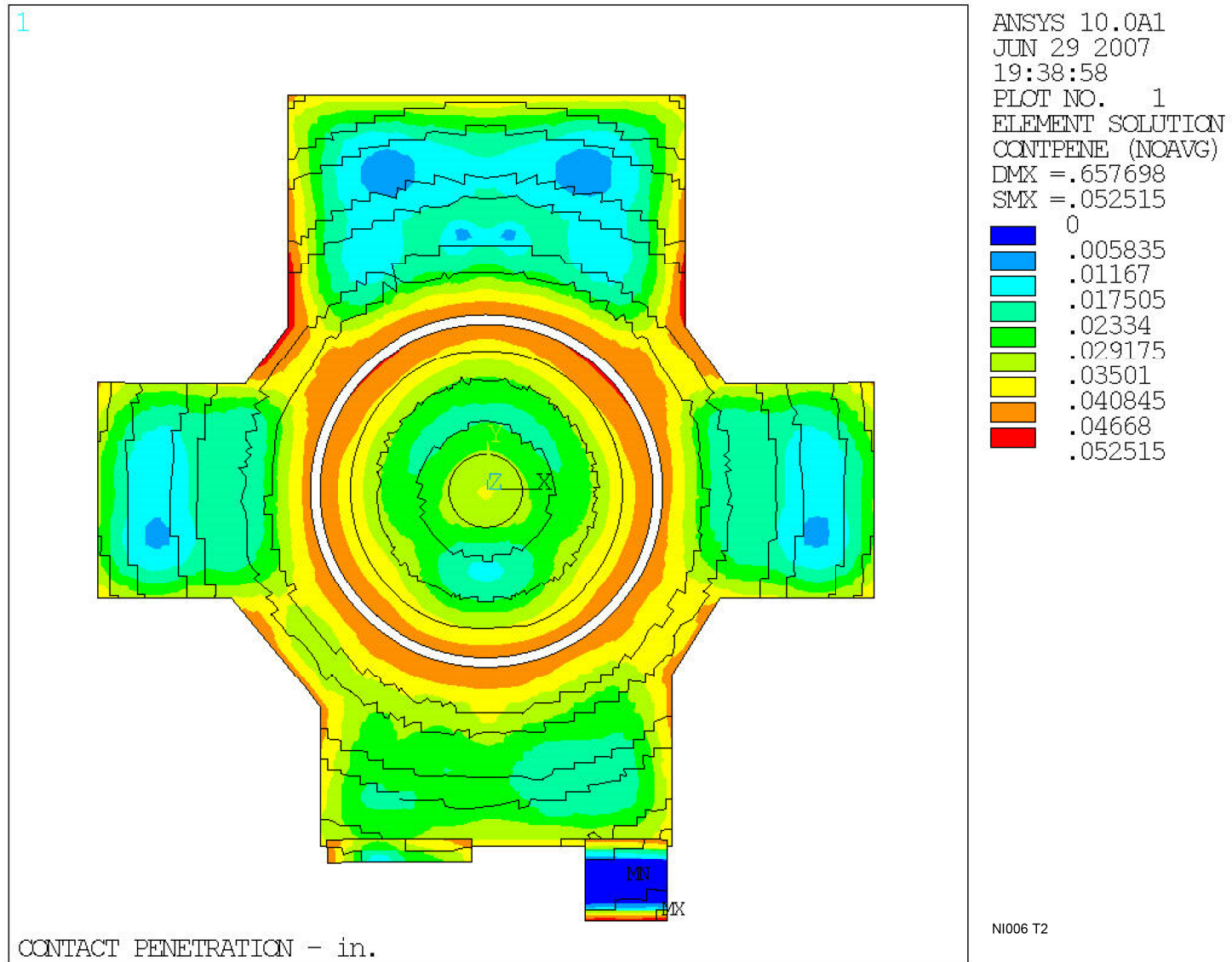


Figure 3.8-112—Elastic Displacement for Soil Case 5u

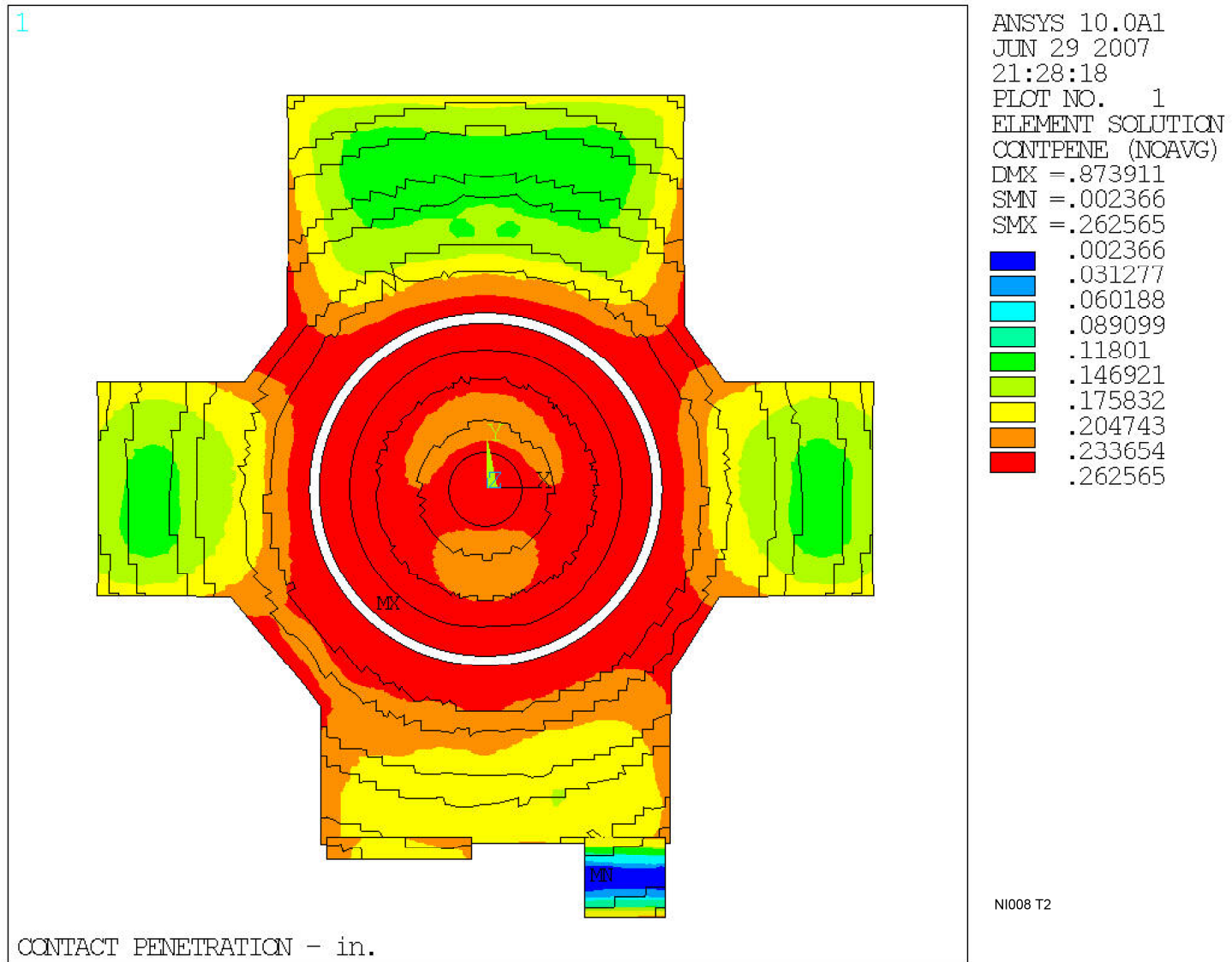


Figure 3.8-113—Elastic Displacement for Soil Case 2sn4u

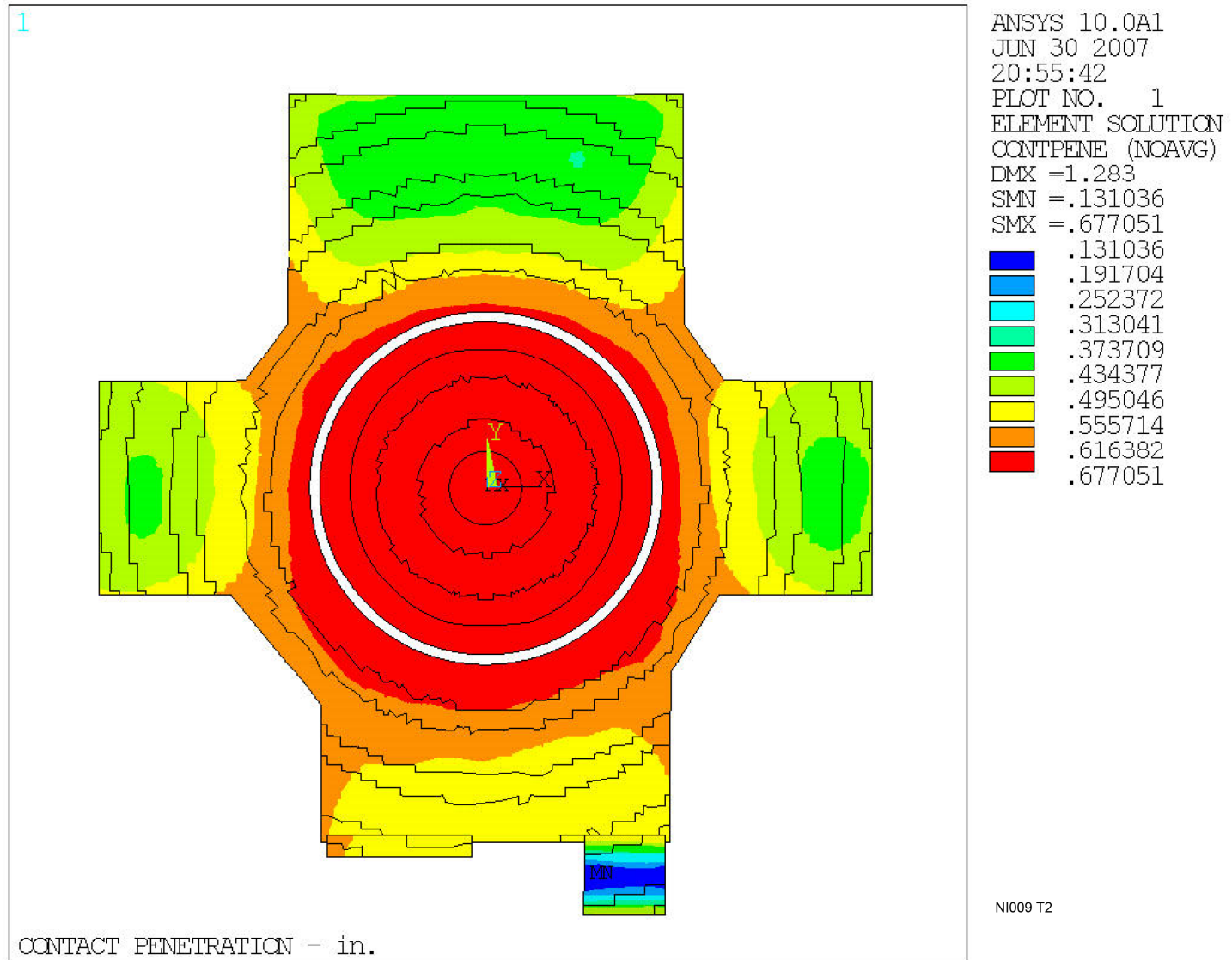


Figure 3.8-114—Elastic Displacement for Soil Case 2n3u

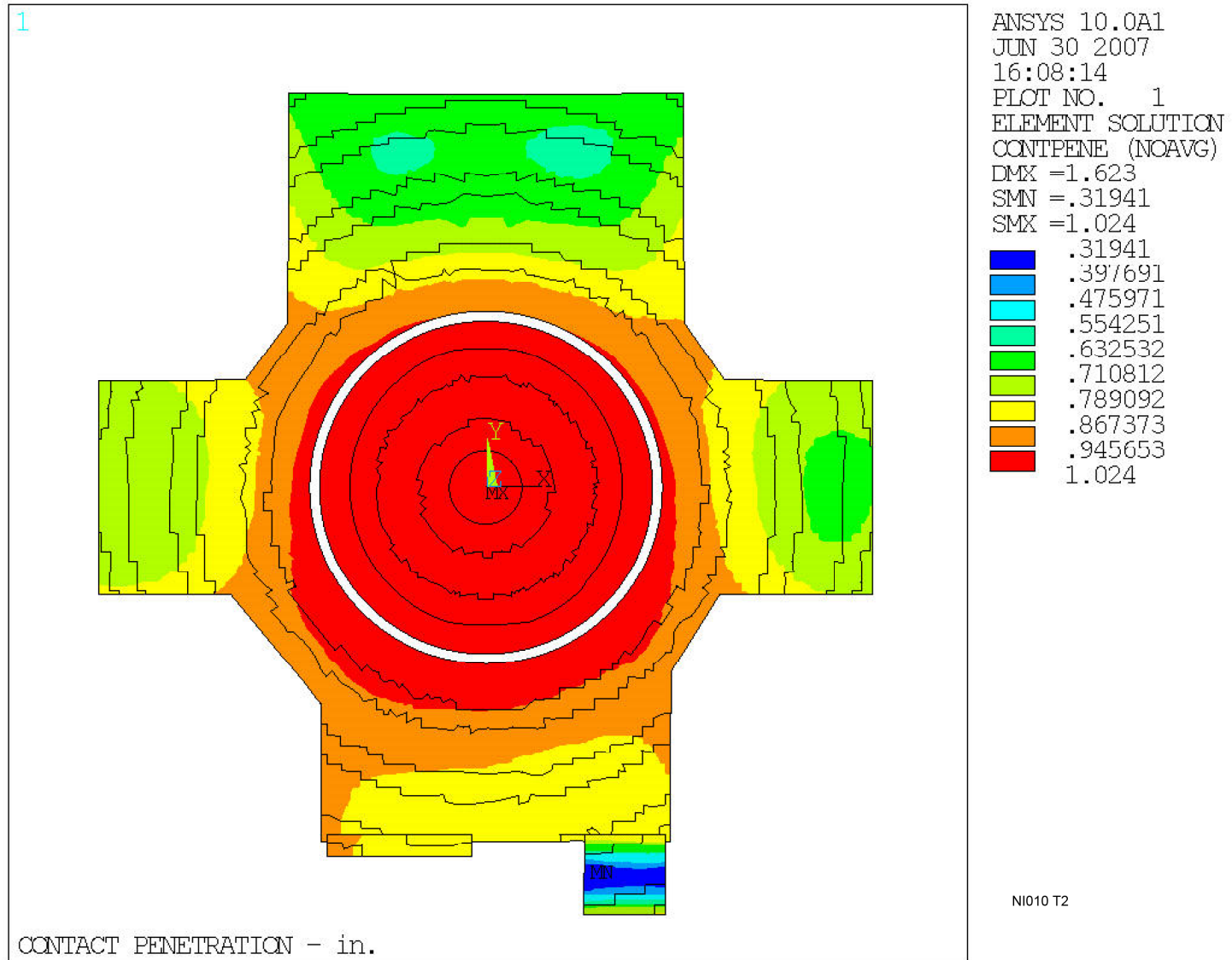


Figure 3.8-115—Elastic Displacement for Soil Case 3r3u

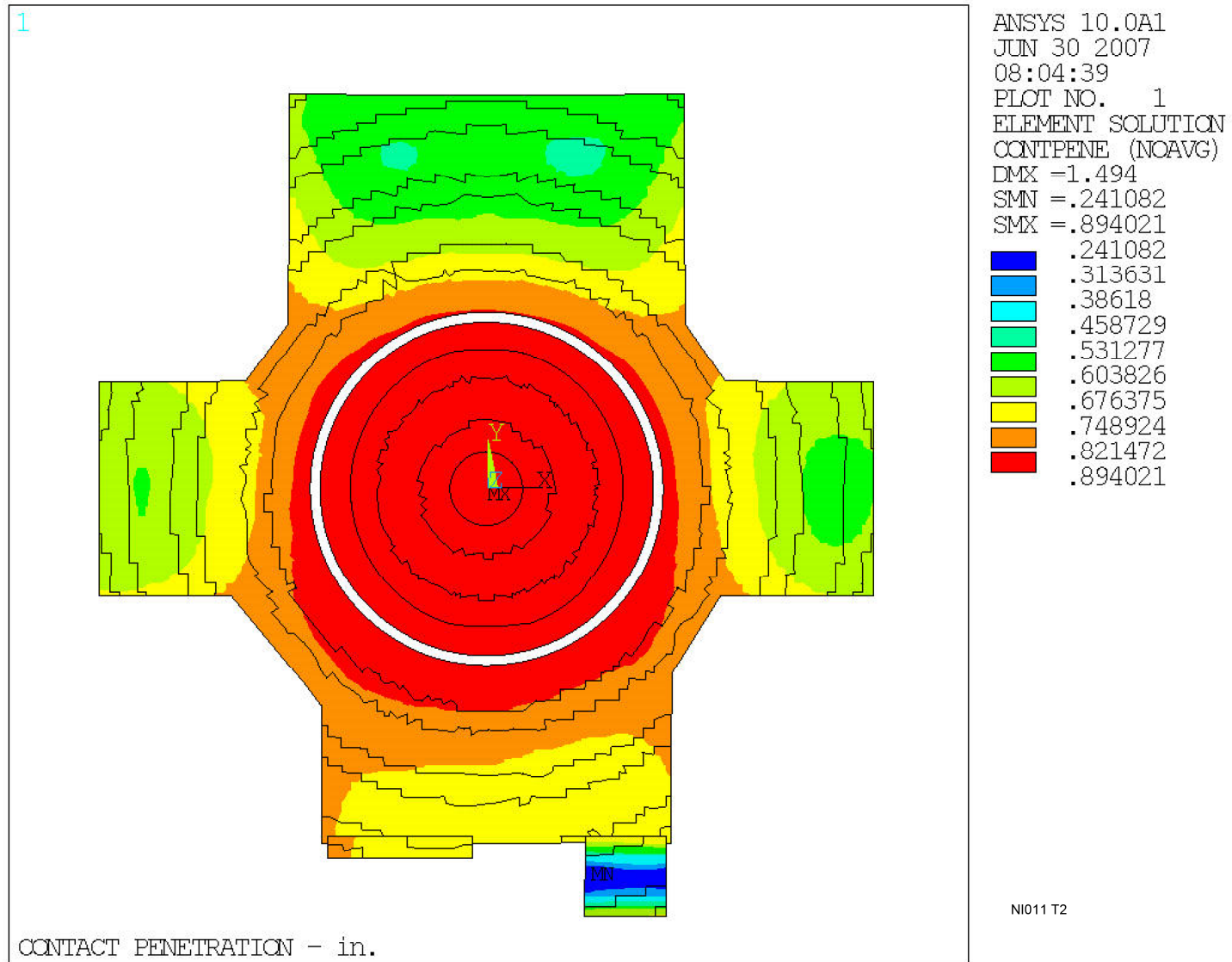
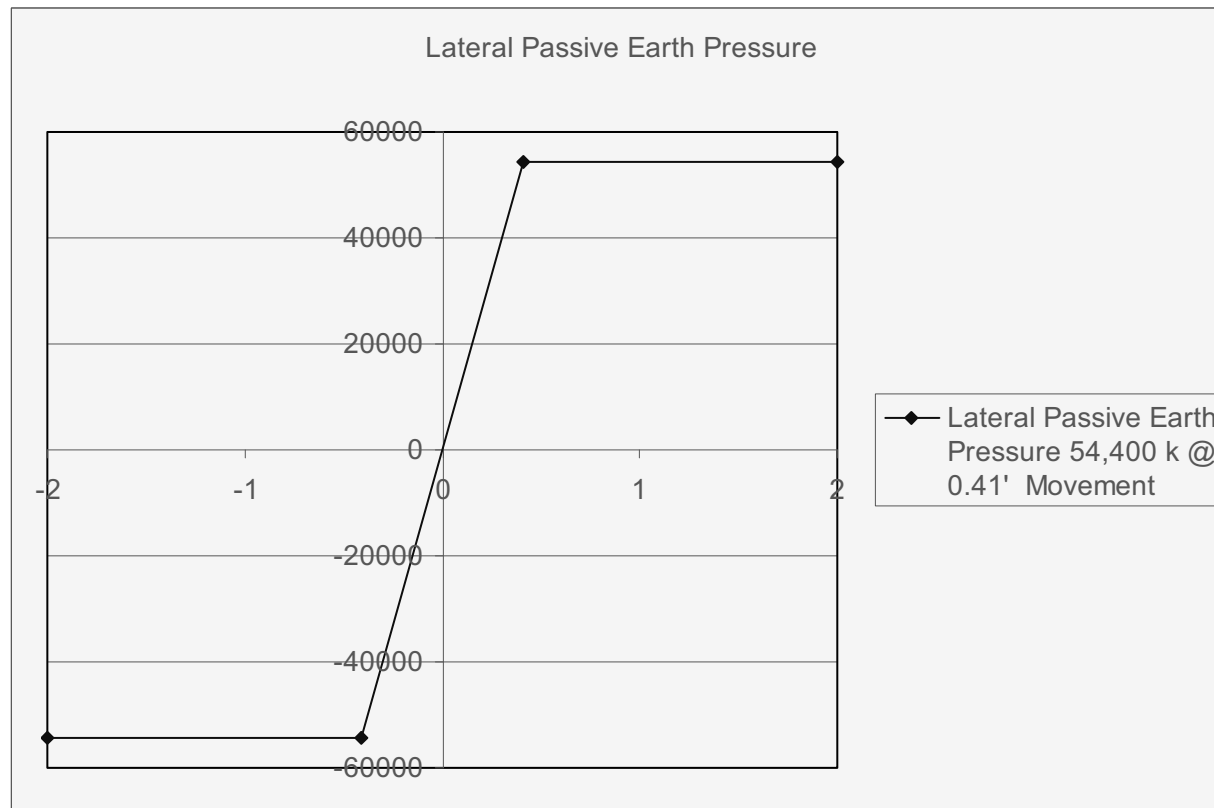
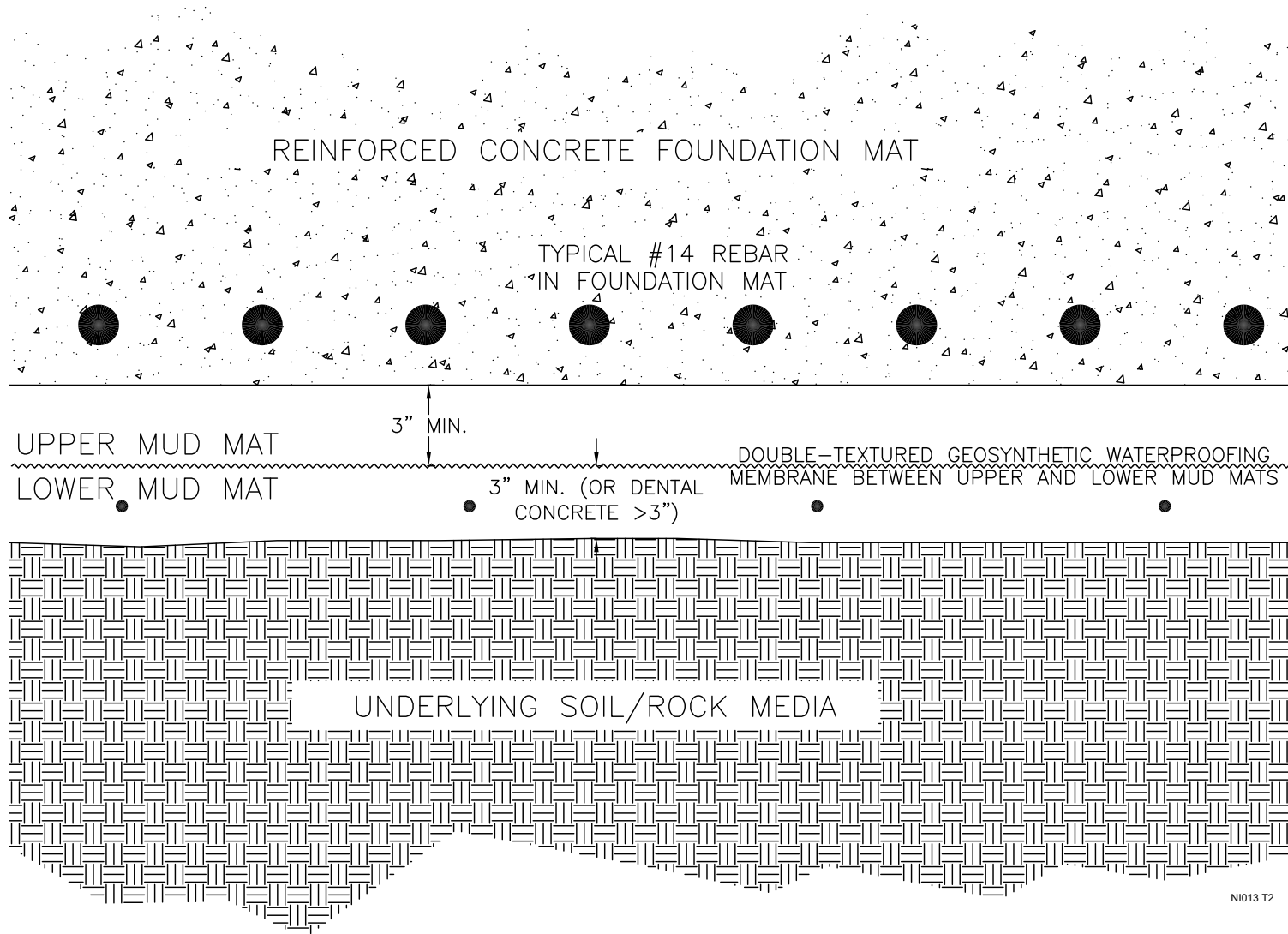


Figure 3.8-116—Passive Soil Pressure



NI012 T2

Figure 3.8-117—Geosynthetic Water Proofing Membrane



[Next File](#)