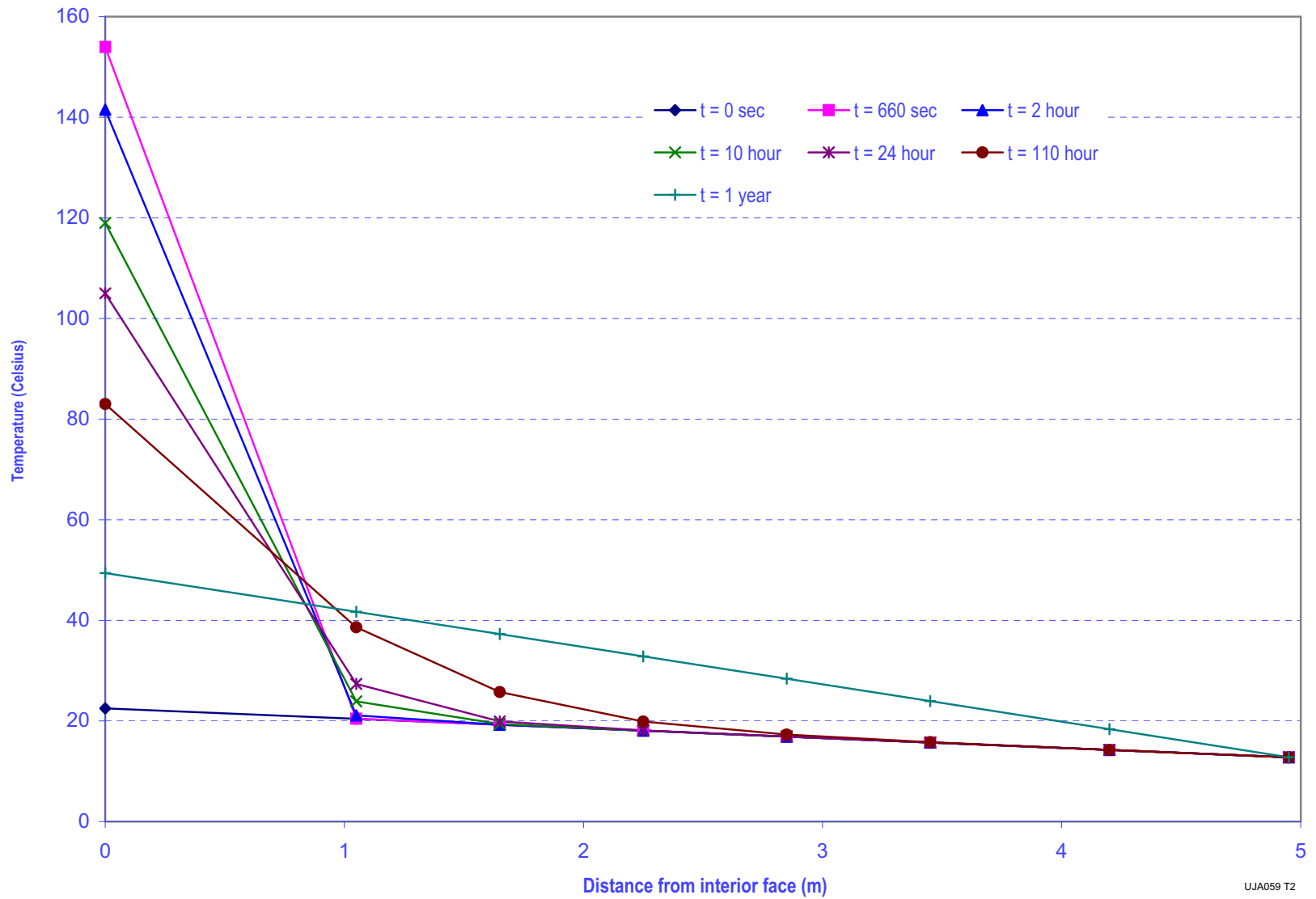


Figure 3.8-24—Temperature Gradient Through Basemat



UJA059 T2

Figure 3.8-25—Equipment Hatch General Assembly

(DIMENSIONS ARE FOR INFORMATION ONLY)

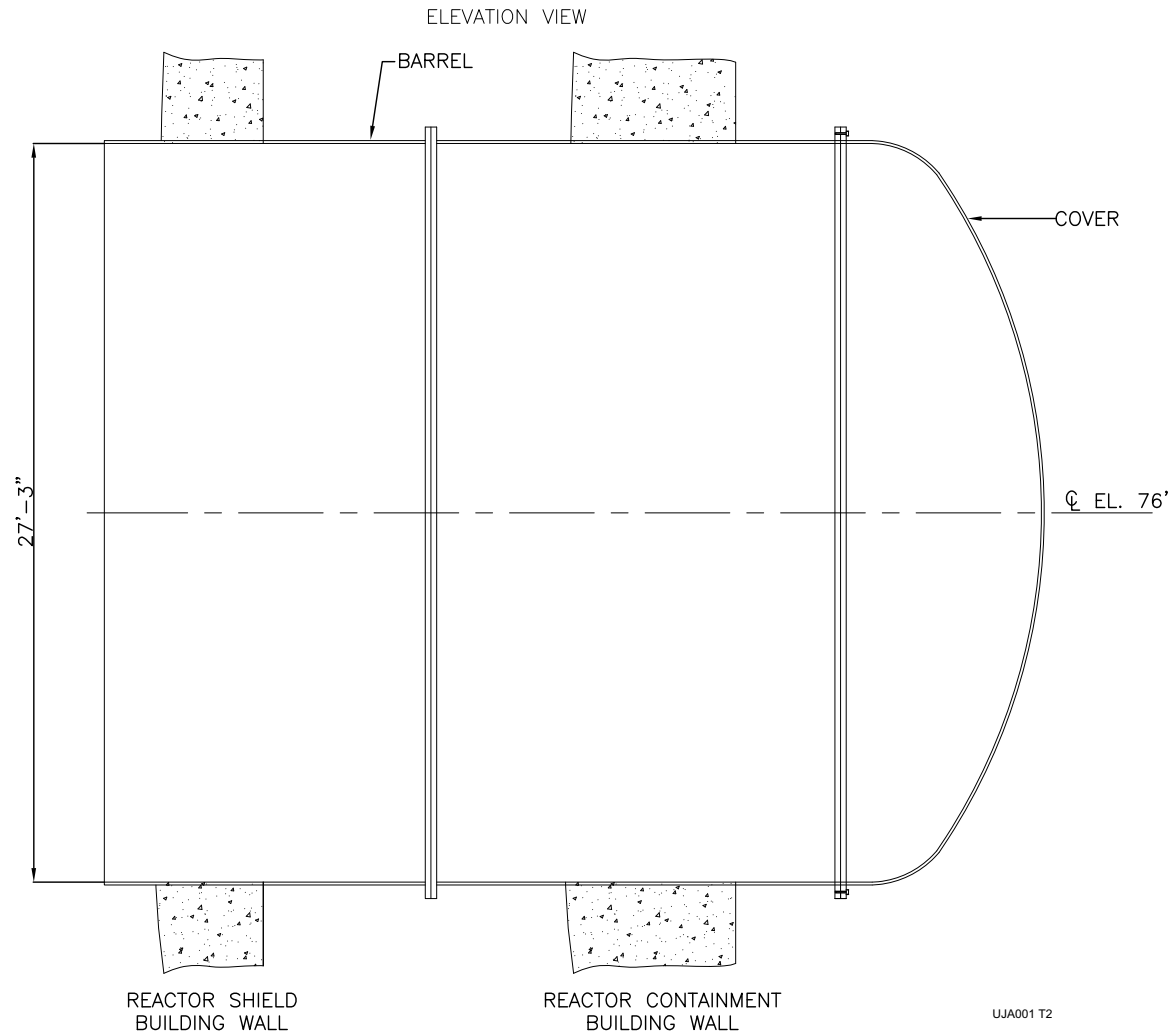


Figure 3.8-26—Personnel Airlock, Emergency Airlock General Overview

(DIMENSIONS ARE FOR INFORMATION ONLY)

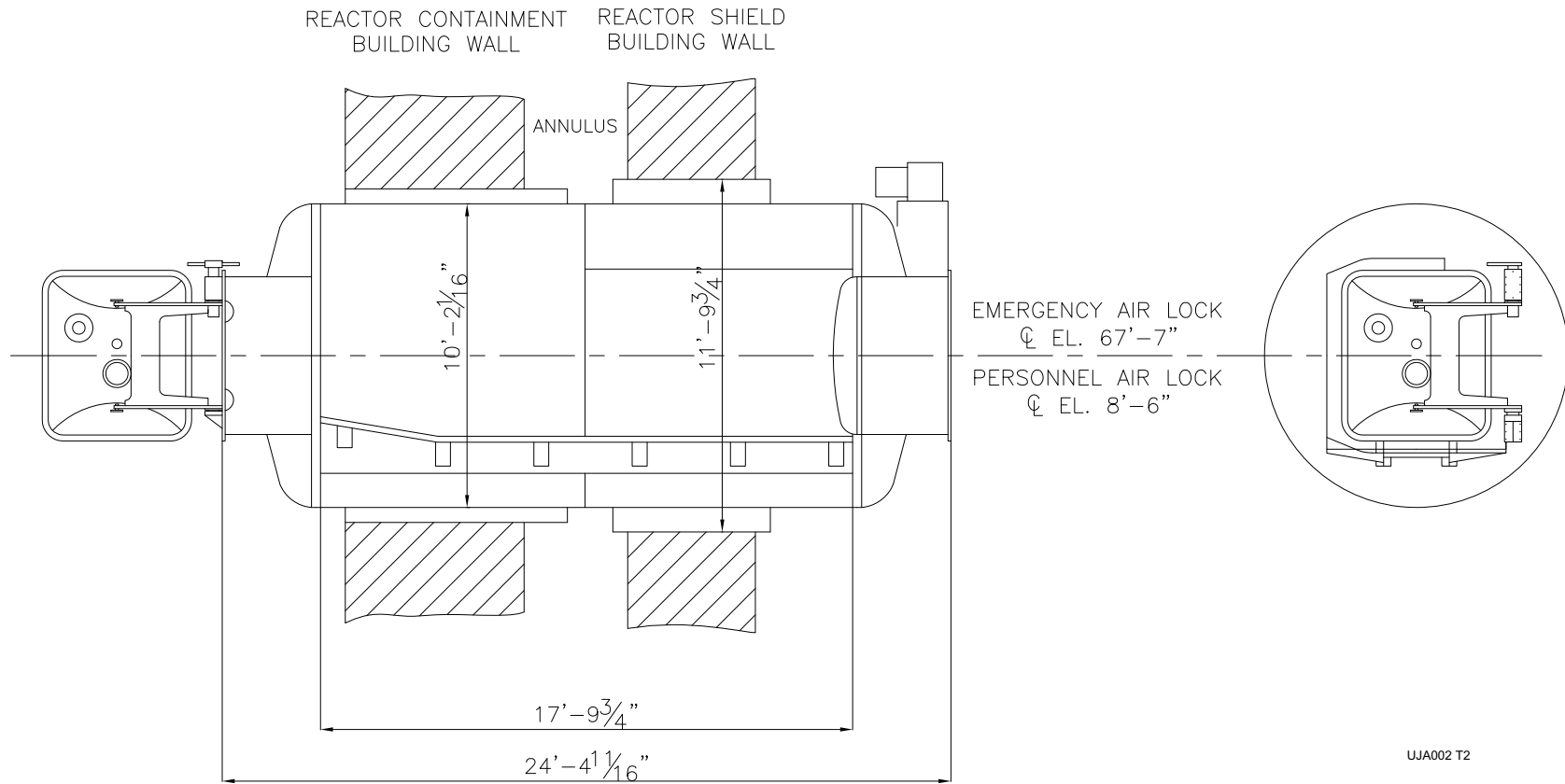
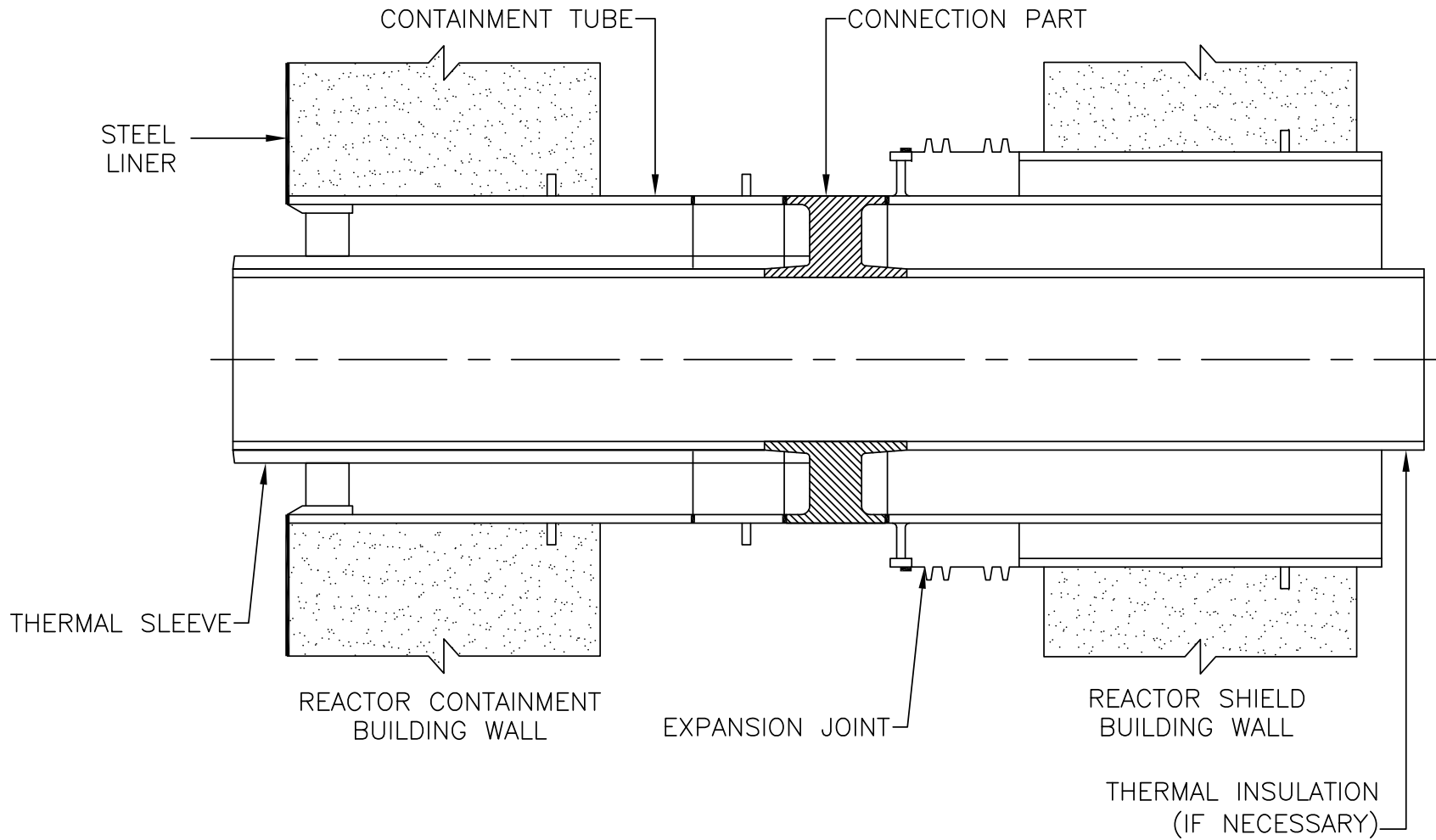
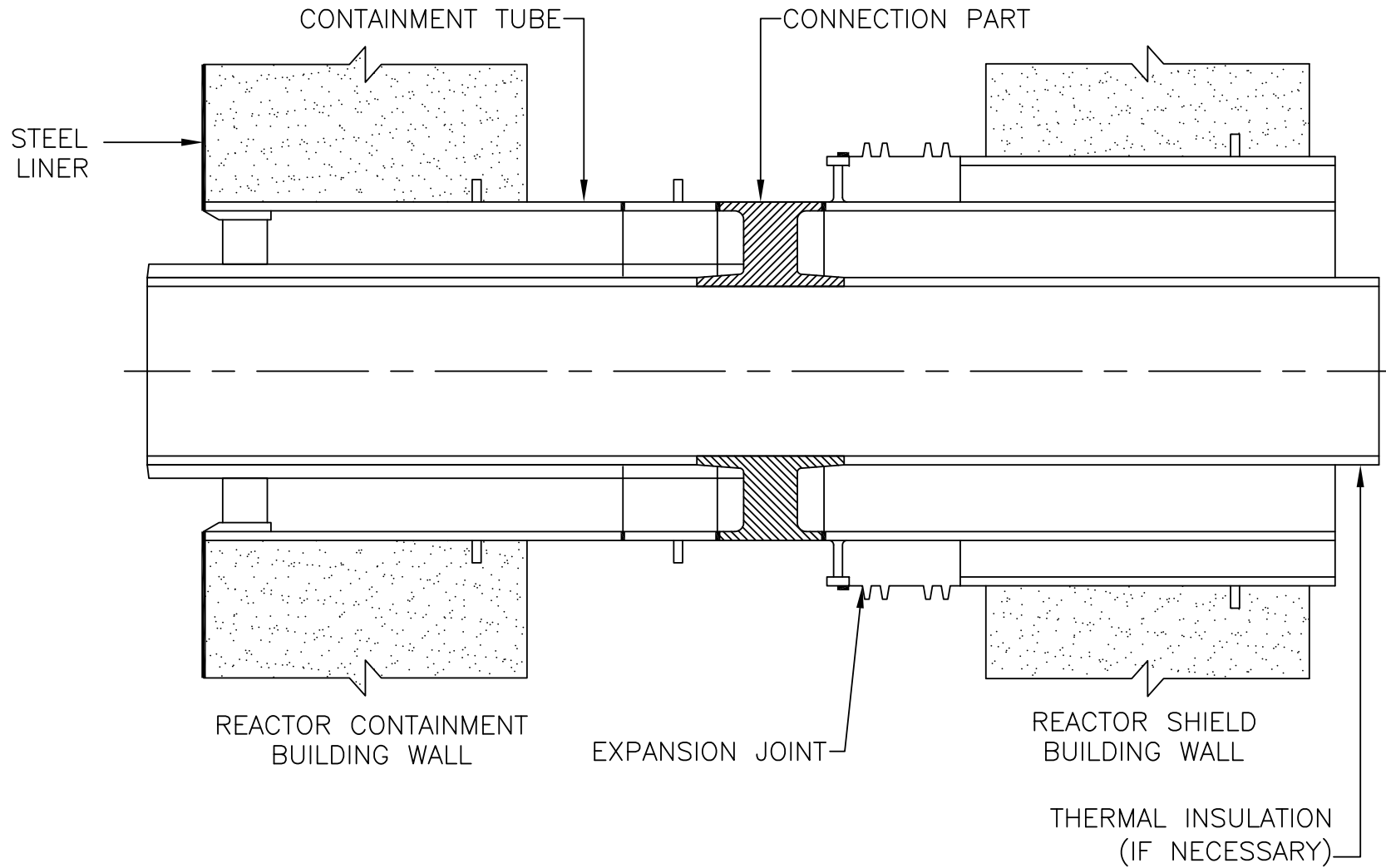


Figure 3.8-27—Containment Penetrations for Main Steam and Feedwater Pipes



UJA006 T2

Figure 3.8-28—Containment Penetrations for High Energy Pipes



UJA003 T2

Figure 3.8-29—Containment Standard Piping Penetrations – Single Pipe

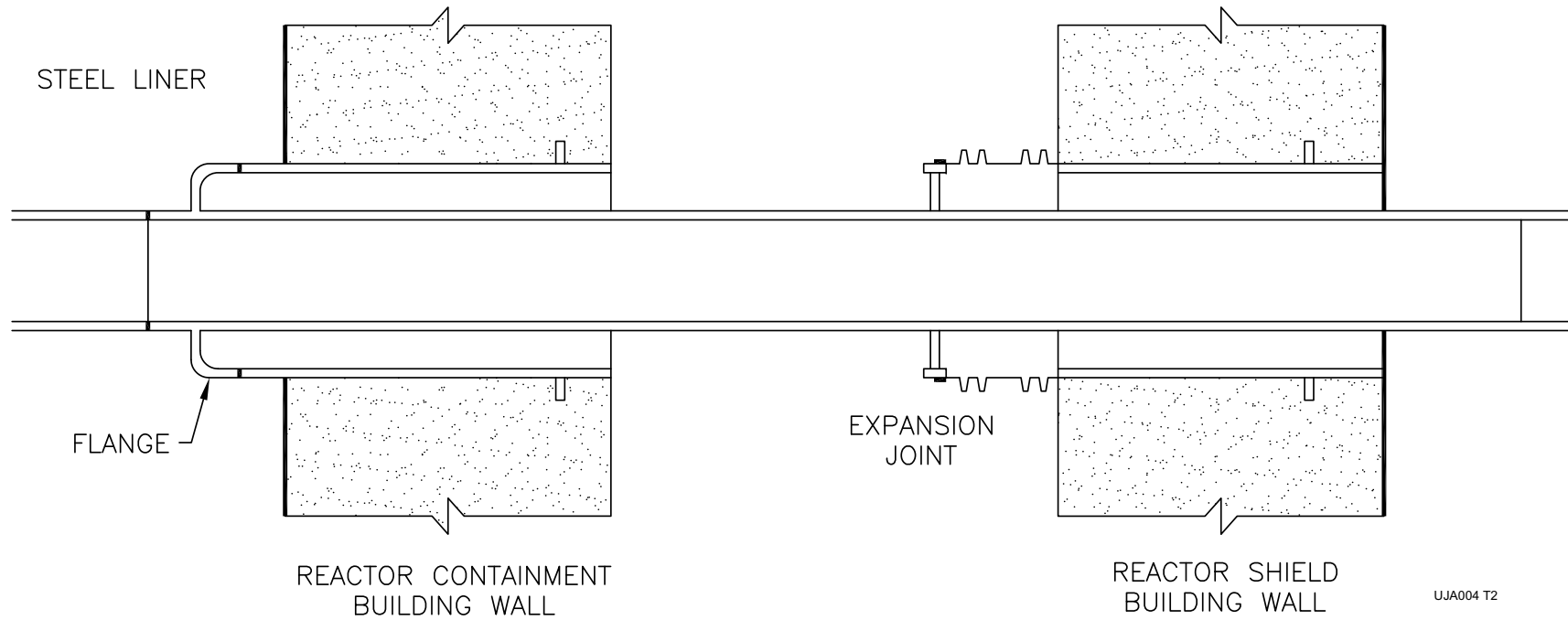


Figure 3.8-30—Containment Standard Piping Penetrations – Multiple Pipes

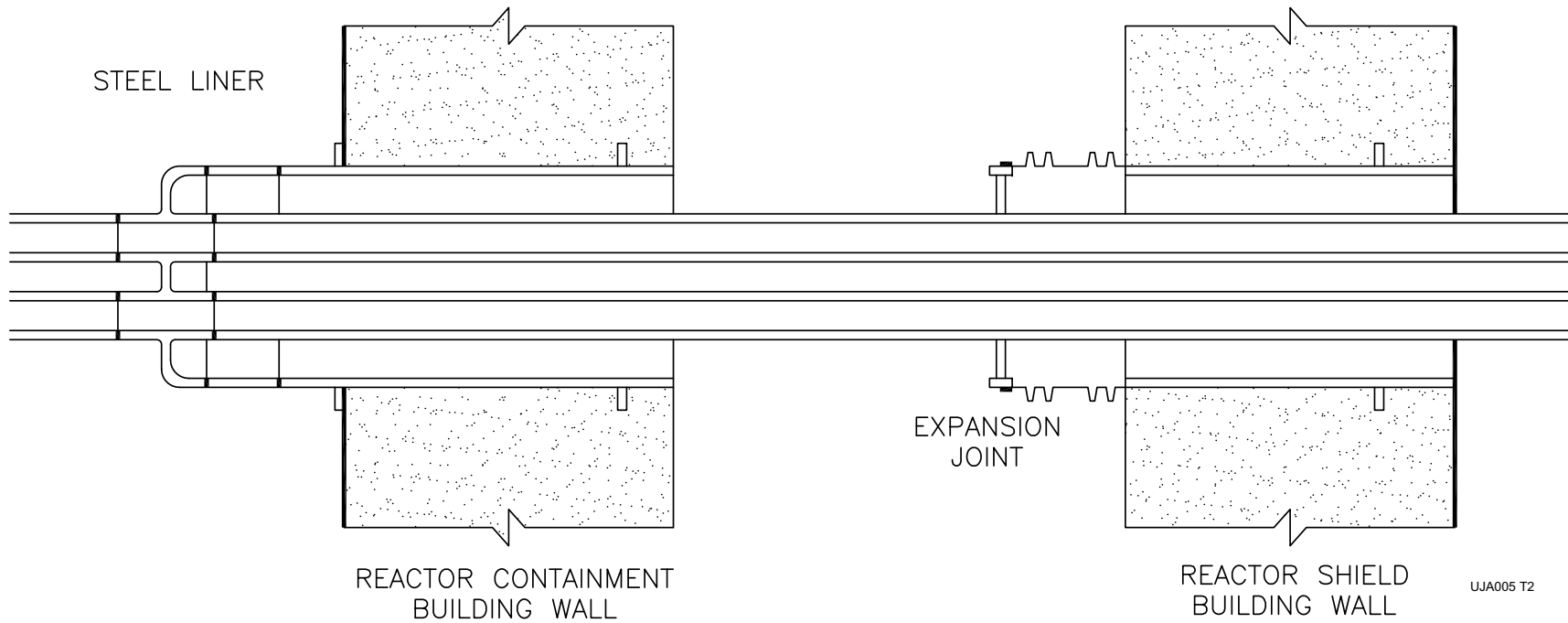


Figure 3.8-31—Fuel Transfer Tube Penetration (Conceptual View)

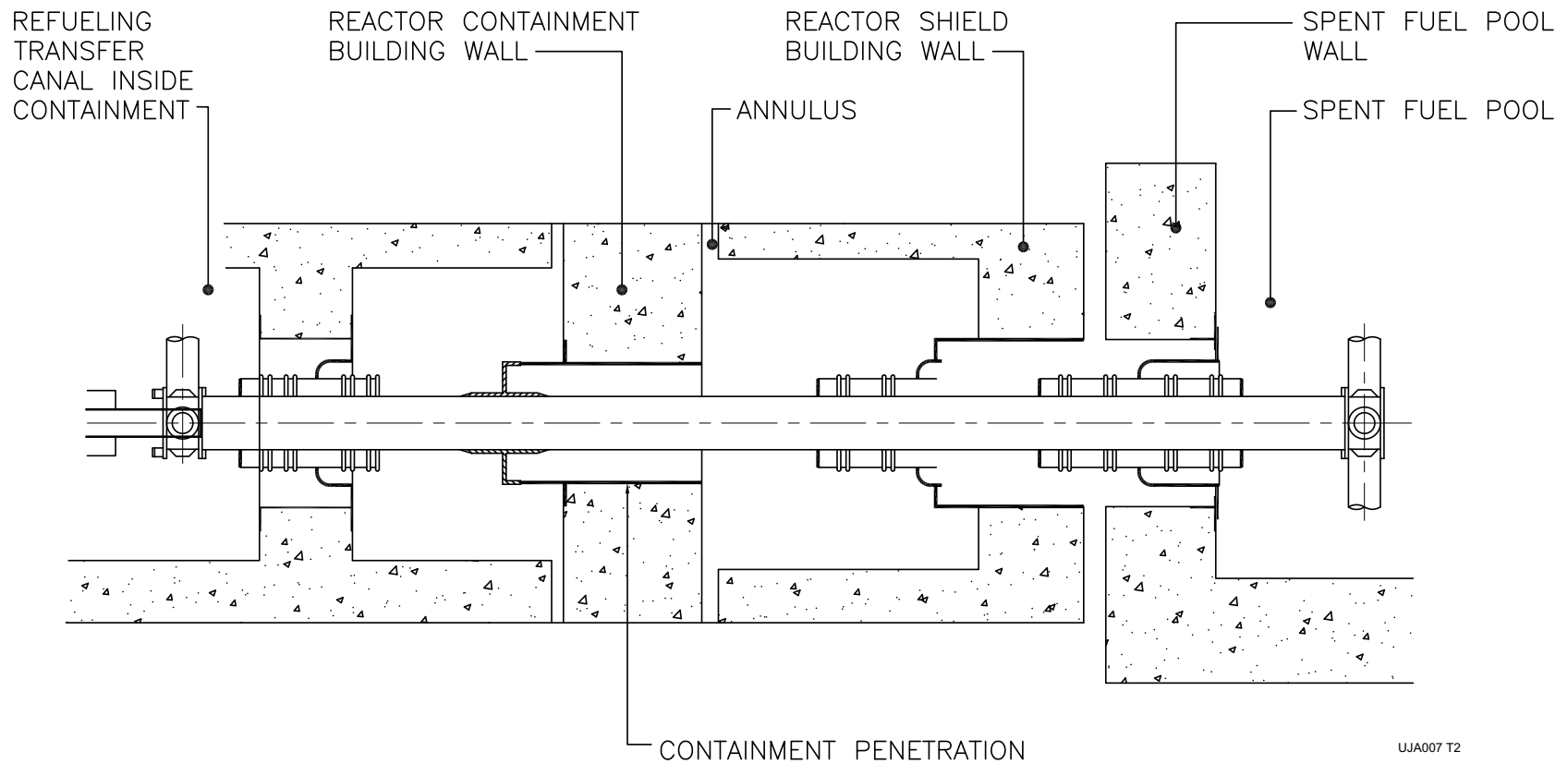


Figure 3.8-32—Reactor Building Internal Structures ANSYS Model

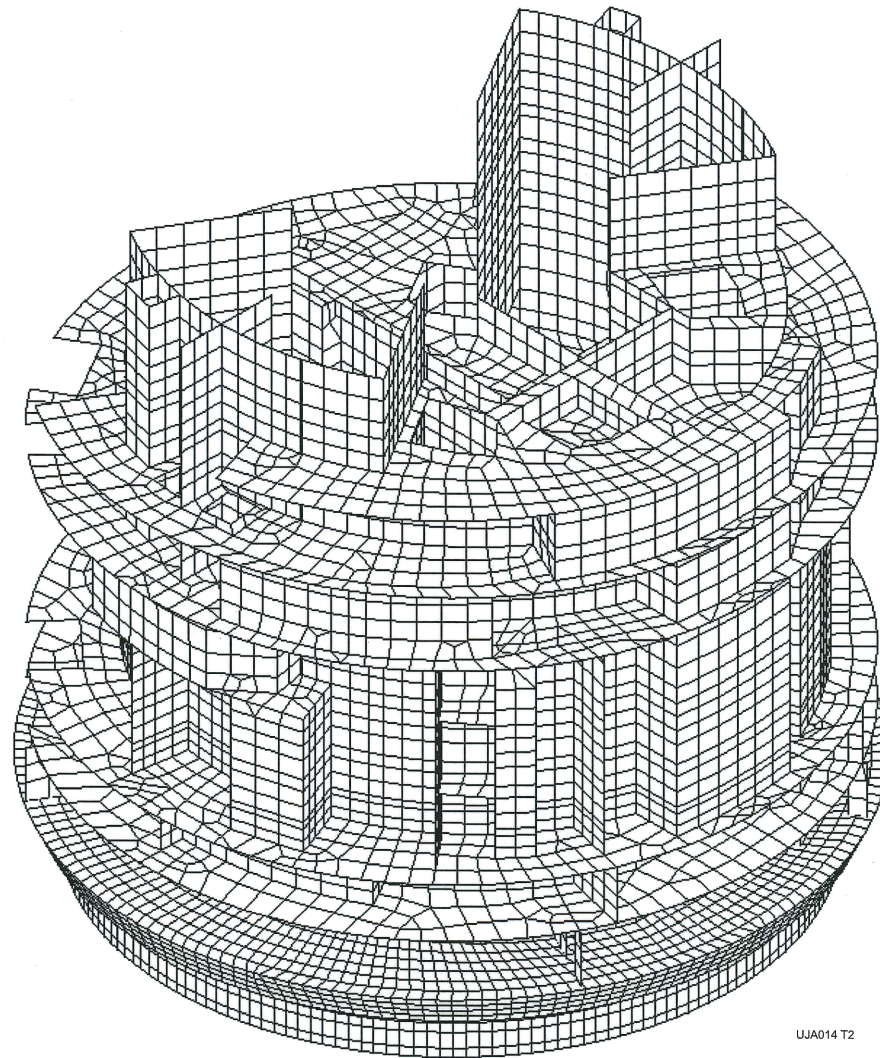


Figure 3.8-33—Reactor Building Internal Structures ANSYS Model – Section through Center of Building Looking West

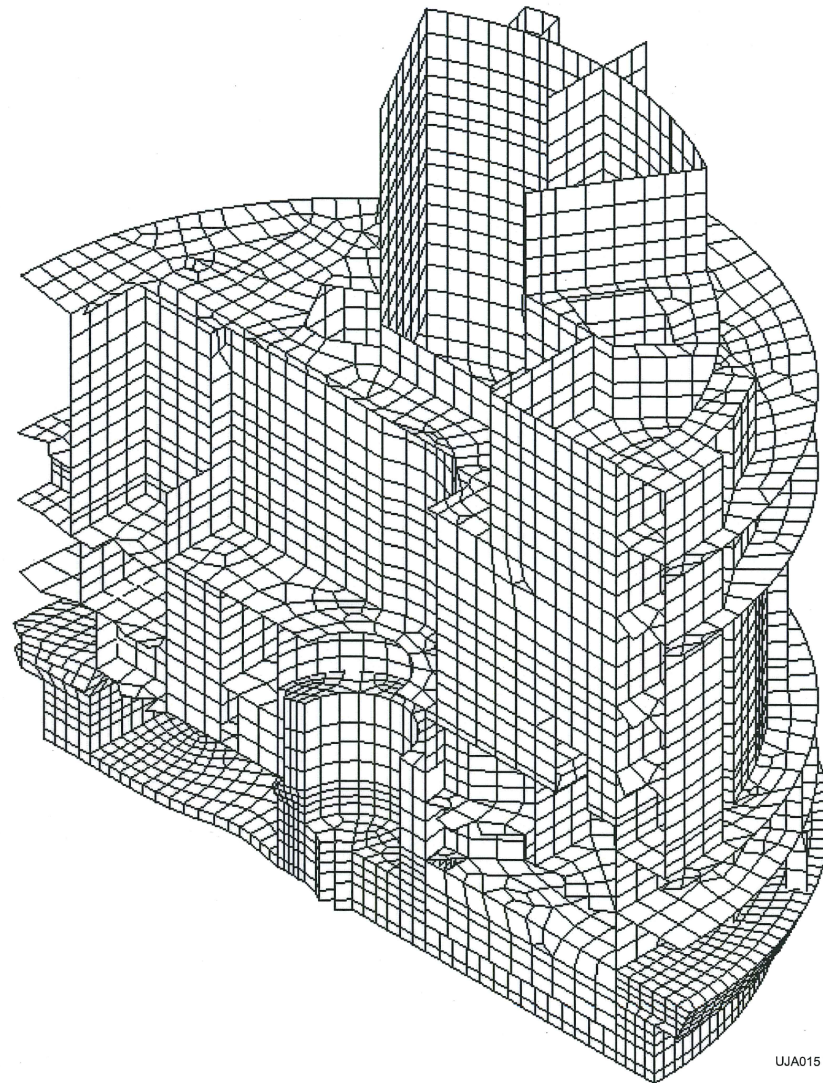


Figure 3.8-34—Reactor Building Internal Structures ANSYS Model – Section through Reactor Cavity and Refueling Canal

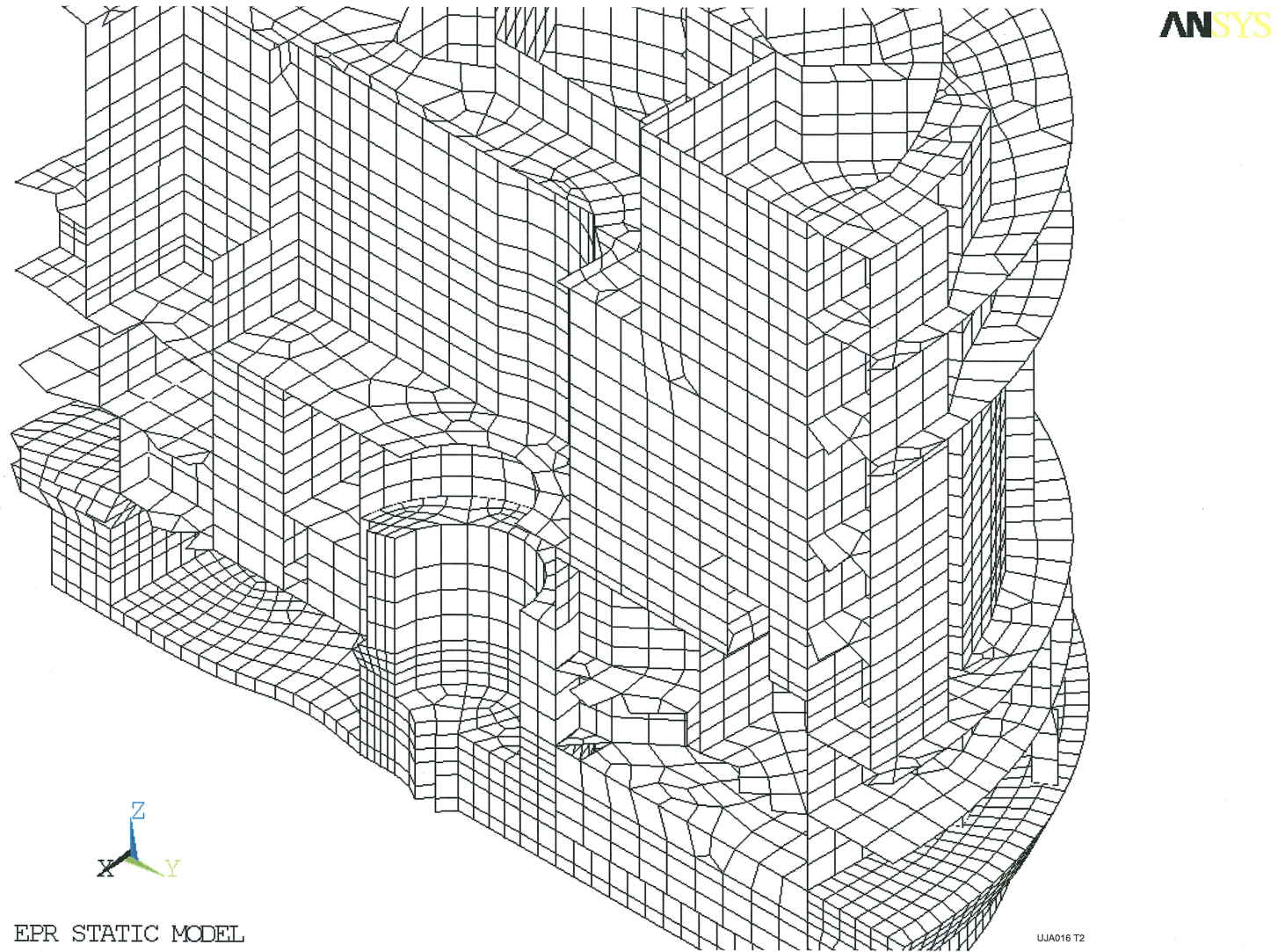


Figure 3.8-35—Reactor Building Internal Structures ANSYS Model – Section through Center of Building Looking North

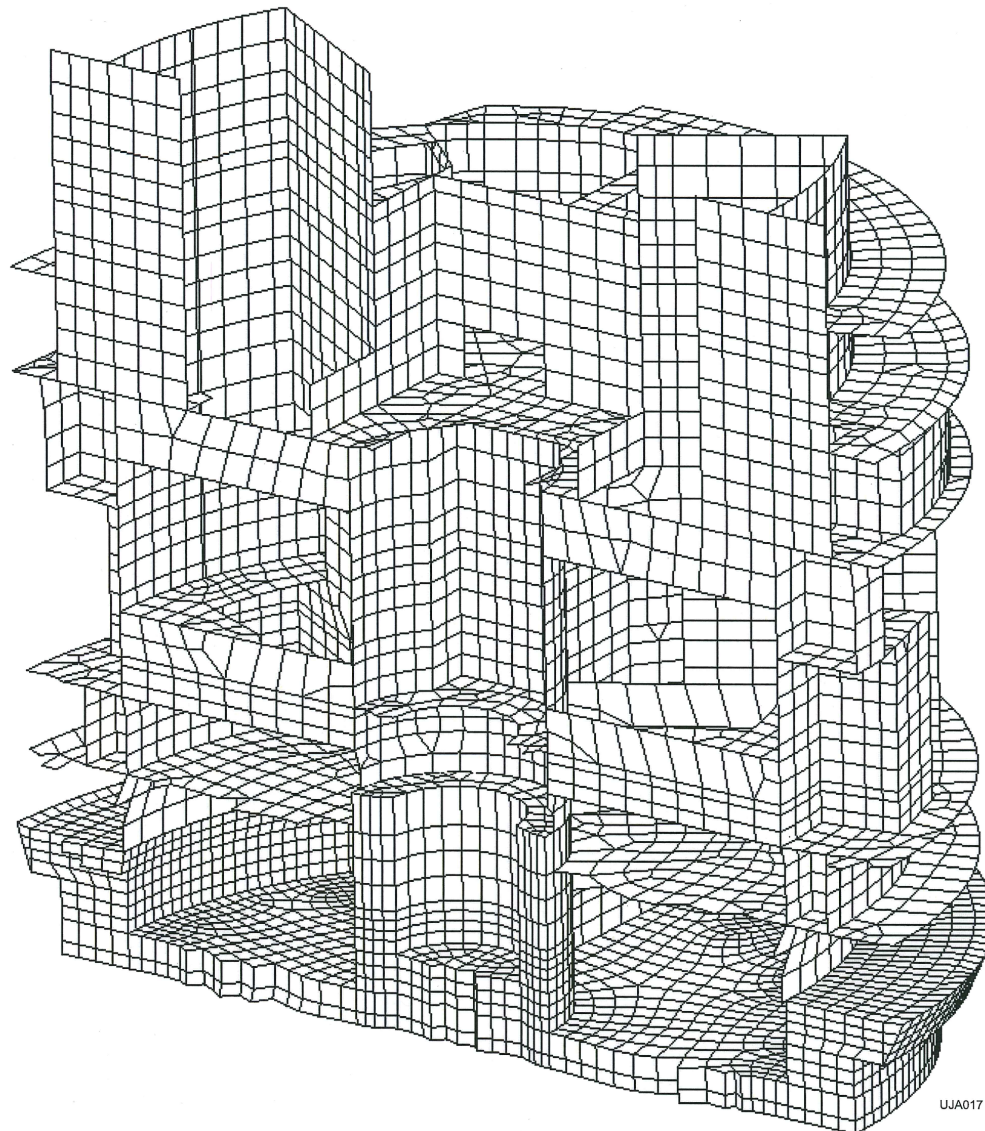


Figure 3.8-36—Reactor Building Internal Structures ANSYS Model – Section through Center of Building Looking Northwest

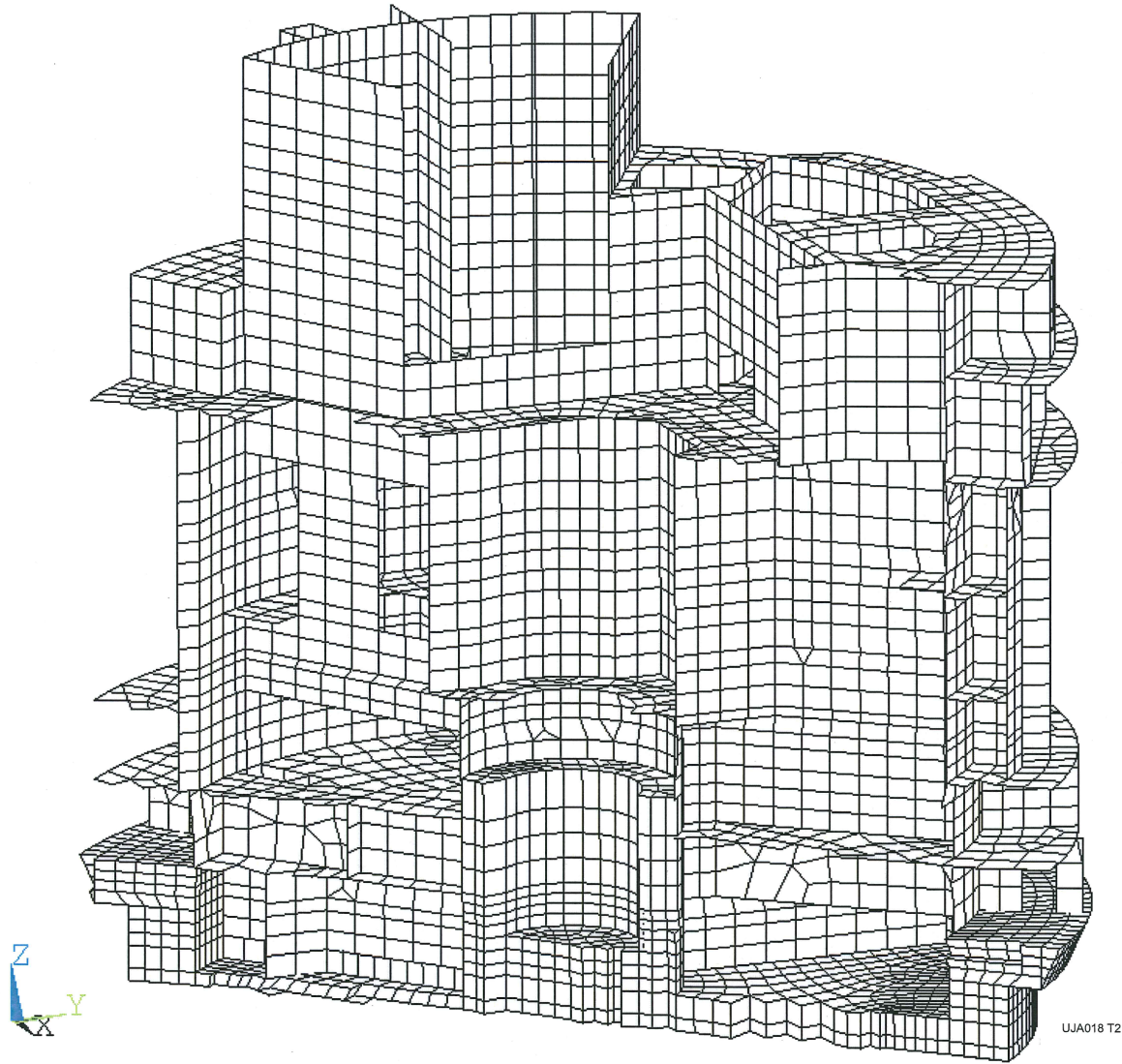
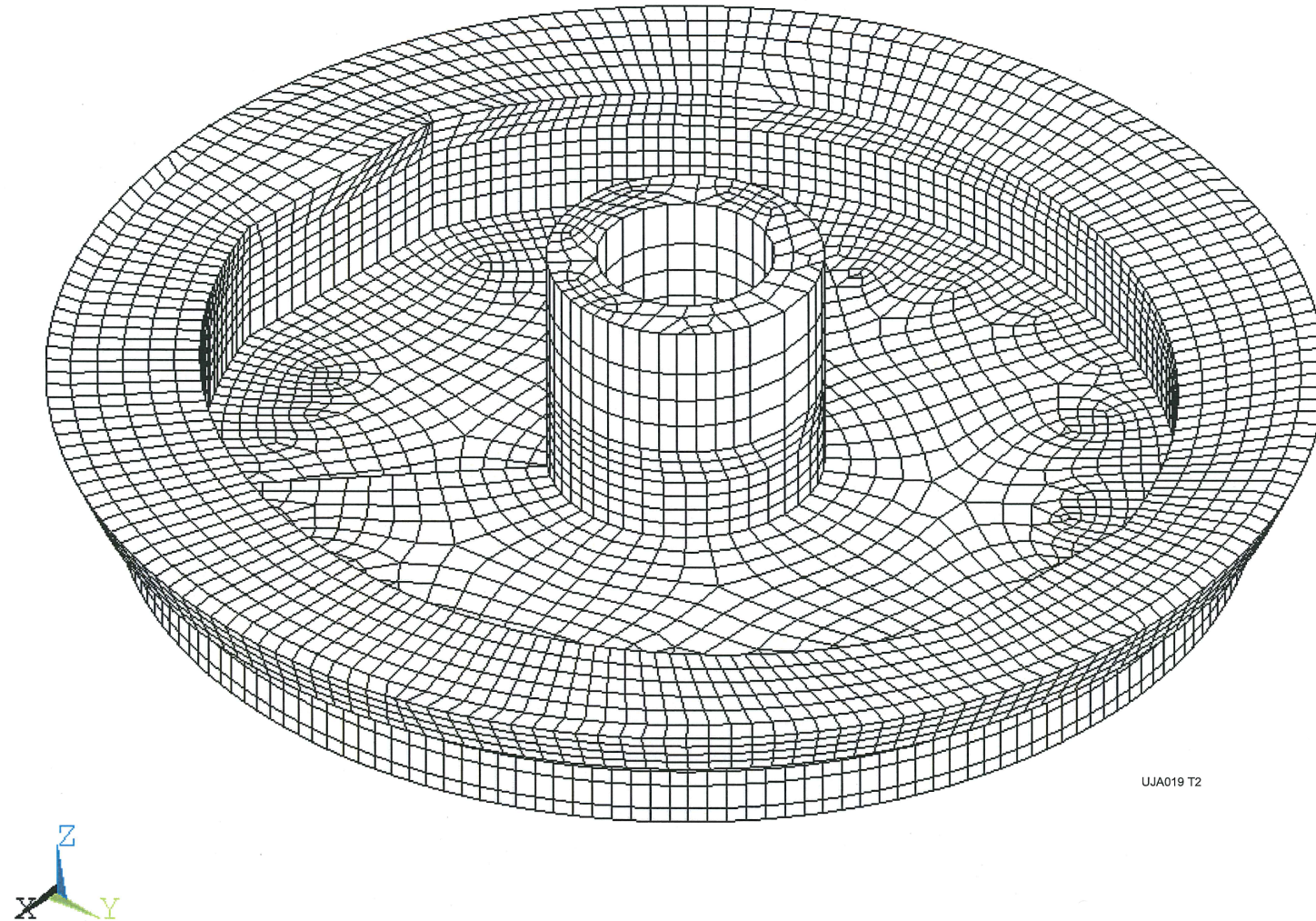


Figure 3.8-37—Reactor Building Internal Structures ANSYS Model – View of IRWST and Internal Structures Basemat



[Next File](#)