

# LOST CREEK ISR, LLC

## Lost Creek Project

---

---

Volume 3b of 5

---

---



WYOMING  
PROJECTS



---

Application for  
WDEQ Permit to Mine  
Original Dec07; Rev3 Apr09

Appendix D (D6)  
Attachments D6-3 and D6-4

## TABLE OF CONTENTS - General

---

### VOLUME 1 of 5: Adjudication Files

Form 1	Application for In Situ Permit to Mine
Form 3	License to Mine Application
Form 8	Surface Owner Consent Form
Appendix A	Surface and Mineral Rights within the Lost Creek Permit Area
Appendix B	Surface and Mineral Rights Adjacent to the Lost Creek Permit Area
Appendix C	Tabulation of Lands
Appendix E	Right of Ways
Table ADJ-1	List of Regulatory Requirements

### VOLUME 2 of 5: Appendix D (D1 to D5)

D1	Land Use
D2	Brief History
D3	Archaeological and Paleontological Resources (separate volume – requesting WDEQ confidentiality)
D4	Meteorology, Climatology, and Air Quality
D5	Geology

### VOLUME 3a of 5: Appendix D (D6)

D6	Hydrology (through Attachment D6-2b)
----	--------------------------------------

### VOLUME 3b of 5: Appendix D (D6)

D6	Hydrology (through Attachments D6-3 and D6-4)
----	---

### VOLUME 4 of 5: Appendix D (D7 to D11)

D7	Soils
D8	Vegetation
D9	Wildlife
D10	Background Radiological Characteristics
D11	Wetlands

### VOLUME 5 of 5: Operations Plan and Reclamation Plan

Operations Plan (OP)
Groundwater Quality Restoration and Surface Reclamation (RP)



TABLE OF CONTENTS - Detailed

---

VOLUME 1 of 5: Adjudication Files

Form 1        Application for In Situ Permit to Mine  
Form 3        License to Mine Application  
Form 8        Surface Owner Consent Form  
Appendix A   Surface and Mineral Rights within the Lost Creek Permit Area  
Appendix B   Surface and Mineral Rights Adjacent to the Lost Creek Permit Area  
Appendix C   Tabulation of Lands  
Appendix E   Right of Ways  
Table ADJ-1   List of Regulatory Requirements

VOLUME 2 of 5: Appendix D (D1 to D5)

D1        Land Use ..... D1-1  
    D1.1    Rangeland and Grazing ..... D1-1  
    D1.2    Wildlife Habitat and Hunting..... D1-2  
    D1.3    Recreation and Special Use Areas ..... D1-2  
    D1.4    Minerals and Energy ..... D1-2  
    D1.5    Transportation and Infrastructure ..... D1-3  
    D1.6    Population Distribution..... D1-3  
D2        Brief History.....D2-1  
D3        Archaeological and Paleontological Resources ..... D3-1  
          (separate volume – requesting WDEQ confidentiality)  
D4        Meteorology, Climatology, and Air Quality ..... D4-1  
    D4.1    Meteorology and Climatology ..... D4-1  
        D4.1.1    Temperature ..... D4-2  
        D4.1.2    Precipitation ..... D4-2  
        D4.1.3    Humidity ..... D4-2  
        D4.1.4    Wind..... D4-3  
        D4.1.5    Evaporation..... D4-3  
        D4.1.6    Severe Weather ..... D4-3  
        D4.1.7    Local Air Flow Patterns and Characteristics ..... D4-4  
    D4.2    Air Quality ..... D4-4  
        D4.2.1    Background Conditions ..... D4-4  
        D4.2.2    Air Quality Construction Permit..... D4-6

TABLE OF CONTENTS – Detailed (continued)

---

*VOLUME 2 of 5: Appendix D (D1 to D5) continued*

D5	Geology.....	D5-1
D5.1	Regional Geology .....	D5-1
D5.1.1	Stratigraphy.....	D5-1
D5.1.2	Structure.....	D5-2
D5.2	Site Geology.....	D5-2
D5.2.1	Stratigraphy.....	D5-3
D5.2.2	Structure.....	D5-4
D5.2.3	Ore Mineralogy and Geochemistry.....	D5-4
D5.2.4	Subsurface Exploration Activities .....	D5-6
D5.2.4.1	Uranium Exploration .....	D5-6
D5.2.4.2	Other Mineral Exploration.....	D5-8
D5.3	Seismology.....	D5-8
D5.3.1	Historic Seismicity .....	D5-8
D5.3.1.1	Town of Bairoil Area.....	D5-8
D5.3.1.2	City of Rawlins Area .....	D5-9
D5.3.1.3	City of Rock Springs Area.....	D5-10
D5.3.1.4	City of Lander Area .....	D5-10
D5.3.1.5	City of Casper Area .....	D5-11
D5.3.2	Uniform Building Code .....	D5-12
D5.3.3	Deterministic Analysis of Active Fault Systems .....	D5-12
D5.3.4	Maximum Tectonic Province Earthquake “Floating Earthquake” Seismogenic Source .....	D5-13
D5.3.5	Short-Term Probabilistic Seismic Hazard Analysis .....	D5-14

*VOLUME 3a of 5: Appendix D (D6)*

D6	Hydrology .....	D6-1
D6.1	Surface Water.....	D6-1
D6.1.1	Drainage Characteristics .....	D6-1
D6.1.2	Surface Water Use .....	D6-3
D6.1.3	Surface Water Quality.....	D6-3
D6.2	Groundwater Occurrence .....	D6-5
D6.2.1	Regional Hydrogeology .....	D6-5
D6.2.1.1	Lewis Shale.....	D6-7
D6.2.1.2	Fox Hills Formation.....	D6-7
D6.2.1.3	Lance Formation .....	D6-7
D6.2.1.4	Fort Union Formation .....	D6-8
D6.2.1.5	Battle Spring Formation- Wasatch Formation.....	D6-8
D6.2.1.6	Undifferentiated Tertiary and Quaternary Sediments...	D6-9
D6.2.2.2	Potentiometric Surface, Groundwater Flow Direction and Hydraulic Gradient.....	D6-13

TABLE OF CONTENTS – Detailed (continued)

---

*VOLUME 3a of 5: Appendix D (D6) continued*

D6.2.2	Site Hydrogeology .....	D6-10
D6.2.2.1	Hydrostratigraphic Units.....	D6-10
D6.2.2.3	Aquifer Properties.....	D6-15
D6.3	Groundwater Use .....	D6-20
D6.4	Groundwater Quality .....	D6-22
D6.4.1	Regional Groundwater Quality .....	D6-22
D6.4.2	Site Groundwater Quality .....	D6-25
D6.4.2.1	Groundwater Monitoring Network and Parameters....	D6-25
D6.4.2.2	Groundwater Quality Sampling Results .....	D6-26
D6.5	Hydrologic Conceptual Model.....	D6-31
D6.5.1	Regional Groundwater Conceptual Model .....	D6-31
D6.5.2	Site Groundwater Conceptual Model.....	D6-32
D6.5.2.1	Hydrostratigraphic Units.....	D6-32
D6.5.2.2	Potentiometric Surface and Hydraulic Gradients .....	D6-33
D6.5.2.3	Aquifer Properties.....	D6-35
D6.5.2.4	Water Quality.....	D6-35
D6.5.2.5	Summary .....	D6-36

*VOLUME 4 of 5: Appendix D (D7 to D11)*

D7	Soils.....	D7-1
D7.1	Introduction.....	D7-1
D7.2	Methods.....	D7-1
D7.2.1	Review of Existing Literature.....	D7-1
D7.2.2	Soil Survey.....	D7-2
D7.2.3	Field Sampling.....	D7-3
D7.2.4	Laboratory Analysis.....	D7-3
D7.3	Results and Discussion .....	D7-3
D7.3.1	General characteristics.....	D7-3
D7.3.2	Soil Mapping Unit Interpretation.....	D7-4
D7.4	Topsoil Suitability.....	D7-5
D7.5	Topsoil Protection.....	D7-5
D7.6	Geotechnical Investigations.....	D7-5
D7.7	Historical Surface Disturbances.....	D7-6
D8	Vegetation.....	D8-1
D8.1	Introduction.....	D8-1
D8.2	Description of the Study Area.....	D8-1
D8.3	Methods.....	D8-2
D8.3.1	Vegetation Type Identification and Mapping.....	D8-2
D8.3.2	Species Composition.....	D8-2
D8.3.3	Sampling Design.....	D8-3

TABLE OF CONTENTS – Detailed (continued)

---

*VOLUME 4 of 5: Appendix D (D7 to D11) continued*

D8.3.4	Sampling Times .....	D8-3
D8.3.5	Collection and Analysis of Vegetation Cover Data .....	D8-3
D8.3.6	Collection and Analysis of Tree and Shrub Density Data .....	D8-4
D8.3.7	Cropland and Prime Farmland Description .....	D8-4
D8.3.8	Plant Species of Special Concern .....	D8-4
D8.4	Results.....	D8-5
D8.4.1	Description of Vegetation Types .....	D8-5
D8.4.1.1	Upland Big Sagebrush Shrubland Type.....	D8-5
D8.4.1.2	Lowland Big Sagebrush Shrubland Type .....	D8-6
D8.4.2	Sample Site Locations.....	D8-8
D8.4.3	Weeds, Selenium Indicators, Endangered or Threatened Species .....	D8-8
D8.4.4	Species Composition.....	D8-8
D8.4.5	Sample Adequacy .....	D8-9
D8.5	Discussion .....	D8-9
D8.6	Conclusions.....	D8-10
D9	Wildlife .....	D9-1
D9.1	Habitat Description and Wildlife Species.....	D9-2
D9.2	Methods.....	D9-3
D9.2.1	File and Data Searches.....	D9-3
D9.2.2	Field Surveys .....	D9-3
D9.3	Results.....	D9-4
D9.3.1	Big Game .....	D9-4
D9.3.2	Upland Game Birds.....	D9-5
D9.3.3	Raptors .....	D9-6
D9.3.4	Waterfowl and Shorebirds .....	D9-7
D9.3.5	Passerine and Breeding Birds .....	D9-7
D9.3.6	Migratory Birds of High Federal Interest .....	D9-8
D9.3.7	Other Mammals .....	D9-9
D9.3.8	T&E and State-Listed Species of Concern .....	D9-9
D9.3.9	Reptiles and Amphibians .....	D9-10
D9.3.10	Fish and Aquatic Life.....	D9-11
D10	Background Radiological Characteristics.....	D10-1
D10.1	Background Gamma Radiation Survey and Soils Sampling .....	D10-1
D10.1.1	Methods.....	D10-2
D10.1.1.1	Gamma Surveys and Mapping.....	D10-2
D10.1.1.2	Cross-Calibration between NaI Detectors and the HPIC.....	D10-4
D10.1.1.3	Soil Sampling and Gamma Correlation Grids .....	D10-5
D10.1.2	Data Quality Assurance and Quality Control .....	D10-6

TABLE OF CONTENTS – Detailed (continued)

---

*VOLUME 4 of 5: Appendix D (D7 to D11) continued*

D10.1.3	Results.....	D10-7
D10.1.3.1	Baseline Gamma Survey.....	D10-7
D10.1.3.2	Baseline Soil Sampling.....	D10-8
D10.1.3.3	HPIC / NaI Cross-Calibration.....	D10-8
D10.1.3.4	Three-Foot HPIC Equivalent Gamma Exposure Rate Mapping.....	D10-9
D10.1.3.5	Soil Ra-226 Concentration Mapping.....	D10-10
D11	Wetlands.....	D11-1
D11.1	Introduction.....	D11-1
D11.2	Methods.....	D11-1
D11.3	Results and Discussion.....	D11-2

*VOLUME 5 of 5: Operations Plan and Reclamation Plan*

Operations Plan (OP).....	OP-1
OP 1.0 Overview of Proposed Operation.....	OP-1
OP 1.1 Site Facilities Layout.....	OP-2
OP 1.2 Ore Deposits.....	OP-3
OP 2.0 Project Development, Maintenance, and Monitoring.....	OP-4
OP 2.1 Project Schedule.....	OP-4
OP 2.2 Additional Regulatory Requirements.....	OP-6
OP 2.3 Land Use.....	OP-7
OP 2.4 Cultural Resources Mitigation Program.....	OP-7
OP 2.5 Topsoil Management.....	OP-8
OP 2.5.1 Short-Term Topsoil Protection.....	OP-9
OP 2.5.2 Long-Term Topsoil Protection.....	OP-9
OP 2.6 Roads.....	OP-10
OP 2.7 Vegetation Protection and Weed Control.....	OP-11
OP 2.8 Wildlife Protection and Monitoring.....	OP-12
OP 2.8.1 Wildlife Protection Measures.....	OP-12
OP 2.8.1.1 Activity Restrictions.....	OP-12
OP 2.8.1.2 Road Use.....	OP-12
OP 2.8.1.3 Fencing and Screening.....	OP-13
OP 2.8.1.4 Transmission Line.....	OP-13
OP 2.8.1.5 Human Disturbance.....	OP-13
OP 2.8.1.6 Wildlife Enhancements.....	OP-13
OP 2.8.2 Wildlife Monitoring.....	OP-14
OP 2.8.2.1 Raptors.....	OP-14
OP 2.8.2.2 Sage Grouse.....	OP-15

TABLE OF CONTENTS – Detailed (continued)

---

*VOLUME 5 of 5: Operations Plan and Reclamation Plan continued*

OP 2.9	Prevention and Remediation of Accidental Releases .....	OP-15
OP 2.9.1	Pipelines, Fittings, Valves, and Tanks .....	OP-16
OP 2.9.2	Wells .....	OP-16
OP 2.9.3	Buildings .....	OP-16
OP 2.9.4	Storage Ponds .....	OP-16
OP 2.9.5	Fuel Storage Areas .....	OP-18
OP 2.10	Air Monitoring .....	OP-18
OP 2.11	Groundwater Monitoring .....	OP-18
OP 2.11.1	On-Site Wells .....	OP-18
OP 2.11.2	Off-Site Wells .....	OP-19
OP 3.0	Mine Unit Processes, Instrumentation, and Control .....	OP-19
OP 3.1	Mine Unit Chemistry .....	OP-19
OP 3.2	Mine Unit Design .....	OP-20
OP 3.2.1	Injection and Production Well Patterns .....	OP-22
OP 3.2.2	Monitor Well Locations .....	OP-22
OP 3.2.2.1	Perimeter Monitor Wells .....	OP-23
OP 3.2.2.2	Observation Wells .....	OP-23
OP 3.2.2.3	Production Zone Monitor Wells .....	OP-24
OP 3.2.2.4	Overlying and Underlying Monitor Wells .....	OP-24
OP 3.3	Well Completion .....	OP-25
OP 3.4	Well Integrity Testing .....	OP-26
OP 3.5	Mine Unit Piping and Instrumentation .....	OP-27
OP 3.6	Mine Unit Control .....	OP-27
OP 3.6.1	Header House Control .....	OP-28
OP 3.6.2	Pattern Control .....	OP-29
OP 3.6.3	Projected Water Balance and Water Level Changes ....	OP-30
OP 3.6.3.1	Water Balance .....	OP-30
OP 3.6.3.2	Mine Unit Interference .....	OP-31
OP 3.6.3.3	Cumulative Drawdown .....	OP-31
OP 3.6.4	Excursion Monitoring and Control .....	OP-33
OP 3.6.4.1	Mine Unit Baseline Water Quality and Upper Control Limits .....	OP-33
OP 3.6.4.2	Excursion Detection .....	OP-34
OP 3.6.4.3	Excursion Verification and Corrective Action .....	OP-34
OP 3.6.4.4	Ability to Control an Excursion .....	OP-35
OP 4.0	Plant Processes, Instrumentation, and Control .....	OP-36
OP 4.1	Ion Exchange (Resin-Loading) Circuit .....	OP-36
OP 4.2	Elution Circuit .....	OP-37
OP 4.3	Precipitation/Filtration Circuit .....	OP-37
OP 4.4	Major Process Equipment and Instrumentation .....	OP-38

TABLE OF CONTENTS – Detailed (continued)

---

*VOLUME 5 of 5: Operations Plan and Reclamation Plan continued*

OP 5.0	Effluent Control Systems.....	OP-38
OP 5.1	Gaseous Emissions and Airborne Particulates.....	OP-39
OP 5.1.1	Non-Radioactive Emissions and Particulates .....	OP-39
OP 5.1.2	Radioactive Emissions.....	OP-40
OP 5.2	Liquid Wastes .....	OP-40
OP 5.2.1	Liquid Non-11(e)(2) Byproduct Materials .....	OP-41
OP 5.2.1.1	“Native” Groundwater Recovered during Well Development, Sample Collection, and Pump Testing.....	OP-41
OP 5.2.1.2	Storm Water Runoff.....	OP-41
OP 5.2.1.3	Waste Petroleum Products and Chemicals .....	OP-41
OP 5.2.1.4	Domestic Liquid Waste .....	OP-42
OP 5.2.2	Sources of Liquid 11(e)(2) Byproduct Material .....	OP-42
OP 5.2.2.1	Liquid Process Waste.....	OP-43
OP 5.2.2.2	“Affected” Groundwater Generated during Well Development and Sample Collection.....	OP-44
OP 5.2.2.3	Groundwater Generated during Aquifer Restoration.....	OP-45
OP 5.2.3	Disposal of Liquid 11(e)(2) Byproduct Materials .....	OP-45
OP 5.2.3.1	Storage Ponds.....	OP-45
OP 5.2.3.2	UIC Class I Wells .....	OP-46
OP 5.3	Solid Wastes.....	OP-46
OP 5.3.1	Solid Non-11(e)(2) Byproduct Materials.....	OP-46
OP 5.3.2	Solid 11(e)(2) Byproduct Materials.....	OP-47
Groundwater Quality Restoration and Surface Reclamation (RP) .....		RP-1
RP 1.0	Completion of Production Operations .....	RP-2
RP 2.0	Plans and Schedule for Groundwater Quality Restoration .....	RP-3
RP 2.1	Conditions in the Mineralized Zone Before and After Operations.....	RP-3
RP 2.2	Restoration Requirements.....	RP-4
RP 2.3	Groundwater Restoration Methods.....	RP-5
RP 2.3.1	Groundwater Sweep.....	RP-6
RP 2.3.2	Groundwater Treatment.....	RP-7
RP 2.3.3	Recirculation.....	RP-8
RP 2.4	Stabilization Phase .....	RP-9
RP 2.5	Reporting.....	RP-9
RP 3.0	Mine Unit Reclamation.....	RP-10
RP 3.1	Well Abandonment.....	RP-10
RP 3.2	Facility and Road Reclamation.....	RP-11

TABLE OF CONTENTS – Detailed (continued)

---

*VOLUME 5 of 5: Operations Plan and Reclamation Plan continued*

RP 4.0 Reclamation and Decommissioning of Processing and Support  
Facilities..... RP-12

RP 4.1 Removal and Disposal of Equipment and Structures ..... RP-13

RP 4.2 Waste Storage, Treatment, and Disposal Facilities ..... RP-14

RP 4.3 Buried Piping and Engineering Control Structures ..... RP-14

RP 4.4 Roads..... RP-14

RP 4.5 Soil Replacement and Revegetation ..... RP-15

    RP 4.5.1 Post-Operational Land Use ..... RP-15

    RP 4.5.2 Surface Preparation..... RP-15

    RP 4.5.3 Soil Replacement ..... RP-16

    RP 4.5.4 Seed Mix, Reseeding Methods, and Fencing..... RP-16

    RP 4.5.5 Revegetation Success Criteria..... RP-17

RP 5.0 Financial Assurance ..... RP-17



## TABLE OF CONTENTS – Detailed (continued)

---

### FIGURES

---

VOLUME 1 of 5: Adjudication Files – No Figures

VOLUME 2 of 5: Appendix D (D1 to D5)

D1 Land Use

Figure D1-1a General Location of the Permit Area

Figure D1-1b Aerial Photo of the Permit Area

Figure D1-2 Land Ownership

Figure D1-3 BLM Grazing Allotments

Figure D1-4 Nuclear Fuel Cycle Facilities and Mines within 50 Miles

Figure D1-5 Regional Transportation Network

Figure D1-6 Significant Population Centers within 50 Miles

D3 Archaeological and Paleontological Resources

(separate volume – requesting WDEQ confidentiality)

D4 Meteorology, Climatology, and Air Quality

Figure D4-1 Meteorological Stations within 50 Miles of the Permit Area

Figure D4-2 Monthly Total Precipitation in the Project Region

Figure D4-3a to m Wind Speed and Wind Direction at the Lost Soldier  
Meteorological Station

Figure D4-4 Tornado Statistics by County

Figure D4-5 Air Particulate Sampling Locations

Figure D4-6 Passive Radiological Sampling Locations

D5 Geology

Figure D5-1 Regional Geologic Map

Figure D5-2a Geologic Cross Section Schematic of the Permit Area

Figure D5-2b General Stratigraphy of the Upper Battle Spring Formation

Figure D5-3 Historical Seismic Activities in Wyoming

Figure D5-4 UBC Seismic Zones

Figure D5-5 Active Fault Systems in the Vicinity of the Permit Area

Figure D5-6 500-Year Probabilistic Acceleration Map of Wyoming

VOLUME 3a of 5: Appendix D (D6)

D6 Hydrology

Figure D6-1 Surface Drainage Map for the Lost Creek Permit Area

Figure D6-2 Longitudinal Profile along Battle Spring Draw from the  
Northern Boundary

Figure D6-3a Photo of Crooked Well Reservoir Taken During Spring  
Snowmelt Runoff Looking West

## TABLE OF CONTENTS – Detailed (continued)

---

### FIGURES (continued)

---

#### *VOLUME 3a of 5: Appendix D (D6) continued*

- Figure D6-3b Surface Water Permits within Three Miles of the Permit Area
- Figure D6-4 Storm Water Sampler Installed to Collect a One-Liter Sample of Snowmelt or Storm Surface Runoff.
- Figure D6-5 Locations of Storm Water and Spring Snowmelt Samplers
- Figure D6-6 Potentiometric Surface, Wasatch/Battle Spring Aquifers, Great Divide Basin
- Figure D6-7 Regional Hydrostratigraphic Units of Interest, Great Divide Basin
- Figure D6-8 Potentiometric Surface, Tertiary Aquifer System, Great Divide Basin
- Figure D6-9 Location Map, Lost Creek Monitor Wells
- Figure D6-10 Site Hydrostratigraphic Units, Lost Creek Project
- Figure D6-11a Potentiometric Surface, HJ Production Zone, November 2007
- Figure D6-11b Potentiometric Surface, Overlying Aquifer (LFG), November 2007
- Figure D6-11c Potentiometric Surface, Underlying Aquifer (UKM), November 2007
- Figure D6-11d Potentiometric Surface, HJ Production Zone, August 1982 and October 2006
- Figure D6-12 Location of Well Groups Used to Evaluate Vertical Hydraulic Gradients
- Figure D6-13 Location of Pump Tests Conducted in 1982 and 2006
- Figure D6-14a Location of LC19M Pump Test and Monitoring Wells, 2007
- Figure D6-14b Location of LC16M Test Wells, 2007
- Figure D6-15 Drawdown in the HJ Aquifer at the End of the LC19M Pumping Test
- Figure D6-16 Drawdown in the HJ Aquifer Near the End of the LC16M Pump Test
- Figure D6-17 Spatial Distribution of Aquifer Transmissivity
- Figure D6-18 BLM Wells near the Lost Creek Permit Area
- Figure D6-19 BLM Battle Spring Draw Well No. 4451
- Figure D6-20 BLM Boundary Well No. 4775
- Figure D6-21 BLM Battle Spring Well No. 4777
- Figure D6-22 BLM East Eagle Nest Draw Well
- Figure D6-23 Location of Historic Site Monitor Wells

TABLE OF CONTENTS – Detailed (continued)

---

FIGURES (continued)

---

*VOLUME 3a of 5: Appendix D (D6) continued*

- Figure D6-24 Location of Site Baseline Monitor Wells
- Figure D6-25a Distribution of TDS, August 1982
- Figure D6-25b Distribution of Radium-226, August 1982
- Figure D6-25c Distribution of Uranium, August 1982
- Figure D6-26a Distribution of Average TDS, September 2006 to May 2007
- Figure D6-26b Distribution of Average Sulfate, September 2006 to May 2007
- Figure D6-27a Piper Diagram – Average Water Quality at Individual Monitor Wells
- Figure D6-27b Piper Diagram – Average Water Quality in Aquifers of Interest
- Figure D6-28a Distribution of Average Uranium, September 2006 to May 2007
- Figure D6-28b Distribution of Average Radium 226+228, September 2006 to May 2007

*VOLUME 4 of 5: Appendix D (D7 to D11)*

D7 Soils

- Figure D7-1 Typical Soil Pit
- Figure D7-2 Soil Sampling Locations
- Figure D7-3 Existing Road Disturbance
- Figure D7-4 Typical Two-Track Road within Lost Creek Permit Area

D8 Vegetation

- Figure D8-1 Vegetation Map
- Figure D8-2 Upland Big Sagebrush Shrubland
- Figure D8-3 Lowland Big Sagebrush Shrubland
- Figure D8-4 Intergraded Upland and Lowland Big Sagebrush Shrubland

D9 Wildlife

- Figure D9-1 Wildlife Habitat Map
- Figure D9-2 Pronghorn Range
- Figure D9-3 Mule Deer Range
- Figure D9-4 Elk Range
- Figure D9-5 Moose Range
- Figure D9-6 Sage Grouse Leks
- Figure D9-7 Raptor Nests
- Figure D9-8 Location of Pygmy Rabbit Burrows and Pellets

TABLE OF CONTENTS – Detailed (continued)

---

FIGURES (continued)

---

*VOLUME 4 of 5: Appendix D (D7 to D11) continued*

D10 Background Radiological Characteristics

Figure D10-1 Scanning System Equipment and Configuration

Figure D10-2 Correlation Grid Sampling Design

Figure D10-3 NaI-Based Gamma Survey Results

Figure D10-4 NaI Gamma Survey Results and HPIC Measurement Locations

Figure D10-5 OHV Re-Scan Results

Figure D10-6 Soil Sampling and Gamma Survey Results Overlay

Figure D10-7 Ra-226 Soil Concentration and Gamma Exposure Rate  
Correlation

Figure D10-8 Ra-226 and Uranium Soil Concentration Correlation

Figure D10-9 Calibration Curves for HPIC versus NaI Detectors

Figure D10-10 Three-Foot NaI Detector Height Data

Figure D10-11 Three-Foot and 4.5-Foot NaI Detector Height Readings  
Correlation

Figure D10-12 Calculated Three-Foot-HPIC-Equivalent Gamma Exposure  
Rates

Figure D10-13 Kriged Estimates of the Three-Foot-HPIC-Equivalent Gamma  
Exposure Rates

Figure D10-14 Regression Used to Predict Soil Ra-226 Concentrations

Figure D10-15 Estimated Soil Ra-226 Concentrations

D11 Wetlands

Figure D11-1 Potential Wetlands Delineated by the National Wetland  
Inventory

Figure D11-2 Photo of Crooked Well Reservoir in the Spring of 2006

*VOLUME 5 of 5: Operations Plan and Reclamation Plan*

OP Operations Plan

Figure OP-1 Regional Map of the Permit Area

Figure OP-2a Site Layout

Figure OP-2b Lost Creek Ore Trend

Figure OP-2c Road Design Features

Figure OP-3 Typical ISR Operation

Figure OP-4a Lost Creek Project Development, Production, and Restoration  
Schedule

Figure OP-4b Proposed Restoration Equipment Schedule

TABLE OF CONTENTS – Detailed (continued)

---

FIGURES (continued)

---

*VOLUME 5 of 5: Operations Plan and Reclamation Plan continued*

OP Operations Plan (continued)

Figure OP-5a Project Water Balance – Production Only

Figure OP-5b Project Water Balance – Production with Ground Water Sweep  
(GWS)

Figure OP-5c Project Water Balance – Production with GWS and Reverse  
Osmosis (RO)

Figure OP-5d Project Water Balance – Production with RO

Figure OP-5e Project Water Balance – GWS and RO, No Production

Figure OP-5f Project Water Balance – RO Only, No Production

Figure OP-6 Alkaline Uranium Leach Chemistry in the Aquifer

Figure OP-7a Solution Flow Patterns

Figure OP-7b Mine Unit Layout

Figure OP-7c Vegetation and Soil Impacts

Figure OP-8a Injection Well Construction

Figure OP-8b Production Well Construction

Figure OP-8c Monitor Well Construction

Figure OP-9a Well Completion Techniques

Figure OP-9b Restoration Well Completions

Figure OP-10a Ion Exchange Process Flow

Figure OP-10b Plant Process Flow

RP Groundwater Quality Restoration and Surface Reclamation

Figure RP-1 Lost Creek Project Development, Production, and Restoration  
Schedule

Figure RP-2 Site Layout with Mining and Restoration Schedules

Figure RP-3 Proposed Bond Schedule

## TABLE OF CONTENTS – Detailed (continued)

---

### TABLES

---

#### VOLUME 1 of 5: Adjudication Files

##### ADJ Adjudication Files

Table ADJ-1 List of Regulatory Requirements

#### VOLUME 2 of 5: Appendix D (D1 to D5)

##### D1 Land Use

Table D1-1 Hunting Statistics for Hunt Areas that Include the Permit Area

Table D1-2 Population Data

##### D3 Archaeological and Paleontological Resources

(separate volume – requesting WDEQ confidentiality)

##### D4 Meteorology, Climatology, and Air Quality

Table D4-1 Comparison of Temperature Data

Table D4-2 Monthly Maximum and Minimum Humidity Measured at the Lost Soldier Meteorological Station

Table D4-3 Monthly Pan Evaporation at the Pathfinder Dam

Table D4-4 Air Stability Data

Table D4-5 Primary and Secondary Limits for National Ambient Air Quality Standards and the State of Wyoming

Table D4-6 Allowable Increments for Prevention of Significant Deterioration of Air Quality

Table D4-7 Reported Sources of Emissions near the Permit Area

Table D4-8 Reported Total Emissions near the Permit Area

Table D4-9 PM<sub>10</sub> Concentrations at Lost Creek

Table D4-10 Analytical Results for Passive Radon and Gamma Sampling

##### D5 Geology

Table D5-1 Permit Area Stratigraphy

Table D5-2 Abandonment Information for Historic Exploration Holes

#### VOLUME 3a of 5: Appendix D (D6)

##### D6 Hydrology

Table D6-1a Peak Flow Regression Equations

Table D6-1b Calculated Peak Flows for Battle Spring Draw

Table D6-2 Surface Water Permits within Three Miles of the Permit Area

Table D6-3 Historic Water Quality Results for Battle Spring from the Sweetwater Mill Permit Application

TABLE OF CONTENTS – Detailed (continued)

---

TABLES (continued)

---

*VOLUME 3 of 5: Appendix D (D6 to D11)*

D6 Hydrology (continued)

Table D6-4 Water Quality Results for Seven Storm Water/Spring Snowmelt  
Samples Collected on 17 April 2007

Table D6-5 Monitor Well Data

Table D6-6 Water Level Data

Table D6-7a Horizontal Hydraulic Gradients

Table D6-7b Vertical Hydraulic Gradients

Table D6-8 1982 and 2006 Pump Test Results

Table D6-9a 2007 LC19M Long Term Pump Test Monitor Wells

Table D6-9b 2007 LC16M Long Term Pump Test Monitor Wells

Table D6-10a 2007 LC19M Long Term Pump Test Results

Table D6-10b 2007 LC16M Long Term Pump Test Results

Table D6-11 Summary of Aquifer Characteristics

Table D6-12a Groundwater Permits within One-Half Mile of the Permit Area

Table D6-12b Groundwater Permits within Three Miles of the Permit Area

Table D6-13 Lost Creek Project Groundwater Permits

Table D6-14 Baseline Water Quality Monitoring Parameters

Table D6-15a Analytical Results of Baseline Monitoring

Table D6-15b State and Federal Ground Water Quality Criteria for Specified  
Parameters

Table D6-16 Distribution of Samples Exceeding EPA MCL for Radium  
226+228

*VOLUME 4 of 5: Appendix D (D7 to D11)*

D7 Soils

Table D7-1 Soil Mapping Units

Table D7-2 Soil Suitability Ranges

D8 Vegetation

Table D8-1 Areal Extent of the Vegetation Types

Table D8-2 Vegetation Sampling Locations and Site Information

Table D8-3 Cover Parameters of the Upland Big Sagebrush Shrubland

Table D8-4 Shrub, Semi-Shrub, and Cactus Densities of the Upland Big  
Sagebrush Shrubland

Table D8-5 List of Vegetation Species Observed

TABLE OF CONTENTS – Detailed (continued)

---

TABLES (continued)

---

*VOLUME 4 of 5: Appendix D (D7 to D11) continued*

- Table D8-6 Cover Parameters of the Lowland Big Sagebrush Shrubland
- Table D8-7 Shrub, Semi-Shrub, and Cactus Densities of the Lowland Big Sagebrush Shrubland
- Table D8-8 Prohibited and Restricted Noxious Weeds
- Table D8-9 Evaluation of Sample Adequacy

D9 Wildlife

- Table D9-1 Wildlife Species Observed or Potentially Occurring in the Permit Area
- Table D9-2 Relative Abundance of Big Game Observations
- Table D9-3 Sage Grouse Lek Counts
- Table D9-4 Raptor Nest Locations
- Table D9-5 T&E Wildlife Species Potentially Occurring in the Permit Area
- Table D9-6 Wildlife Species of Special Concern

D10 Background Radiological Characteristics

- Table D10-1 Soil Sampling and Correlation Grid Results
- Table D10-2 Gamma Exposure Rate Differences from Two NaI Detector Heights

*VOLUME 5 of 5: Operations Plan and Reclamation Plan*

OP Operations Plan

- Table OP-1a Summary of Environmental & Operational Monitoring - During Plant Construction, Mine Unit Development, & Related Site Development Activities
- Table OP-1b Summary of Environmental & Operational Monitoring - During Operations
- Table OP-1c Summary of Environmental & Operational Monitoring - During Restoration/Reclamation/Decommissioning Activities & Evaluation of Activities' Effectiveness
- Table OP-2 Itemized Calculations on the Areas of the Expected Disturbance
- Table OP-3 Culvert Sizing
- Table OP-4 Potentially Disturbed Acreage by Vegetation Type
- Table OP-5 Surface Activity Timing Restrictions for Protection of Wildlife
- Table OP-6 Water Balance Summary
- Table OP-7 Water Balance – Calculation Details
- Table OP-8 Baseline Water Quality Monitoring Parameters



TABLE OF CONTENTS – Detailed (continued)

---

TABLES (continued)

---

*VOLUME 5 of 5: Operations Plan and Reclamation Plan (continued)*

RP Groundwater Quality Restoration and Surface Reclamation  
Table RP-1 Restoration Groundwater Quality Parameters  
Table RP-2 Typical Specification Data for Removal of Ion Constituents  
Table RP-3 Permanent Seed Mixture  
Table RP-4 Reclamation/Restoration Bond Estimate  
Table RP-5 Equipment and Tank List for Bond Estimate

TABLE OF CONTENTS – Detailed (continued)

---

PLATES

---

*VOLUME 1 of 5: Adjudication Files*

Appendix A Surface and Mineral Rights within the Lost Creek Permit Area  
Plate A-1 Surface Owners of Record within Lost Creek Permit Area  
Plate A-2 Uranium Mineral Owners of Record within Lost Creek Permit Area  
Plate A-3 Oil and Gas Mineral Owners of Record within Lost Creek Permit Area

Appendix B Surface and Mineral Rights Adjacent to the Lost Creek Permit Area  
Plate B-1 Surface Owners of Record within Half Mile Outside Permit Boundary  
Plate B-2 Uranium Mineral Owners of Record within Half Mile Outside Permit Boundary  
Plate B-3 Oil and Gas Mineral Owners of Record within Half Mile Outside Permit Boundary

Appendix C Tabulation of Lands  
Plate C-1 Legal Land Description

Appendix E Right of Ways  
Plate E-1 Location and Access

*VOLUME 2 of 5: Appendix D (D1 to D5)*

D5 Geology  
Plate D5-1a Geologic Cross Section A-A'  
Plate D5-1b Geologic Cross Section B-C  
Plate D5-1c Geologic Cross Section C-D  
Plate D5-1d Geologic Cross Section D-E  
Plate D5-1e Geologic Cross Sections F-F'  
Plate D5-1f Geologic Cross Sections G-G'  
Plate D5-1g Geologic Cross Sections H-H'  
Plate D5-2a Lost Creek Shale Isopach Map  
Plate D5-2b HJ Sand Isopach Map  
Plate D5-2c Sagebrush Shale Isopach Map  
Plate D5-2d UKM Sand Isopach Map

TABLE OF CONTENTS – Detailed (continued)

---

PLATES (continued)

---

*VOLUME 3a of 5: Appendix D (D6)*

D6 Hydrology

Plate D6-1a Groundwater Permits within One-Half Mile of the Permit Area

Plate D6-1b Groundwater Permits within Three Miles of the Permit Area

*VOLUME 4 of 5: Appendix D (D7 to D11)*

D7 Soils

Plate D7-1 Soil Survey Mapping Units

*VOLUME 5 of 5: Operations Plan and Reclamation Plan*

OP Operations Plan

Plate OP-1 Plant Site Plan

TABLE OF CONTENTS – Detailed (continued)

---

ATTACHMENTS

---

VOLUME 1 of 5: Adjudication Files – No Attachments

VOLUME 2 of 5: Appendix D (D1 to D5)

- D3 Archaeological and Paleontological Resources  
(separate volume – requesting WDEQ confidentiality)
- D5 Geology
  - Attachment D5-1 Typical Geophysical Logs
  - Attachment D5-2 Locations, Total Depths, and Completion Dates of  
Historical Drill Holes
  - Attachment D5-3 Communication with WDEQ LQD related to Drill Hole  
Abandonment

VOLUME 3a of 5: Appendix D (D6)

- D6 Hydrology
  - Attachment D6-1 Surface Water Quality Laboratory Results
  - Attachment D6-2a Evaluation of the LC19M Pump Test
  - Attachment D6-2b Evaluation of the LC16M Pump Test

VOLUME 3b of 5: Appendix D (D6)

- D6 Hydrology
  - Attachment D6-3 Well Completion Logs
  - Attachment D6-4 Groundwater Quality Laboratory Results

VOLUME 4 of 5: Appendix D (D7 to D11)

- D7 Soils
  - Attachment D7-1 Soil Survey Work Plan and Correspondence
  - Attachment D7-2 Field Notes/Soil Sample Point Photographs
  - Attachment D7-3 Laboratory Analysis
- D8 Vegetation
  - Attachment D8-1 Scope of Work
  - Attachment D8-2 Raw Data
  - Attachment D8-3 Sensitive Plant Probability

TABLE OF CONTENTS – Detailed (continued)

---

ATTACHMENTS (continued)

---

*VOLUME 4 of 5: Appendix D (D7 to D11) continued*

D9 Wildlife

Attachment D9-1 WGFD Wildlife Observations System Data

Attachment D9-2 Work Plan for Wildlife 2007

Attachment D9-3 BLM and WDEQ Correspondence

Attachment D9-4 MBHFI in Wyoming

D10 Background Radiological Characteristics

Attachment D10-1 Data Quality Assurance Documentation

Attachment D10-2 Data Quality Control Documentation

Attachment D10-3 Final Baseline Gamma Survey and Ra-226 Soil Maps

Attachment D10-4 HPIC-Adjusted Gamma Datasets

(Electronic Dataset Only)

*VOLUME 5 of 5: Operations Plan and Reclamation Plan*

OP Operations Plan

Attachment OP-1 UIC Class 1 Well Permit (to be provided)

Attachment OP-2 Specifications for Storage Ponds

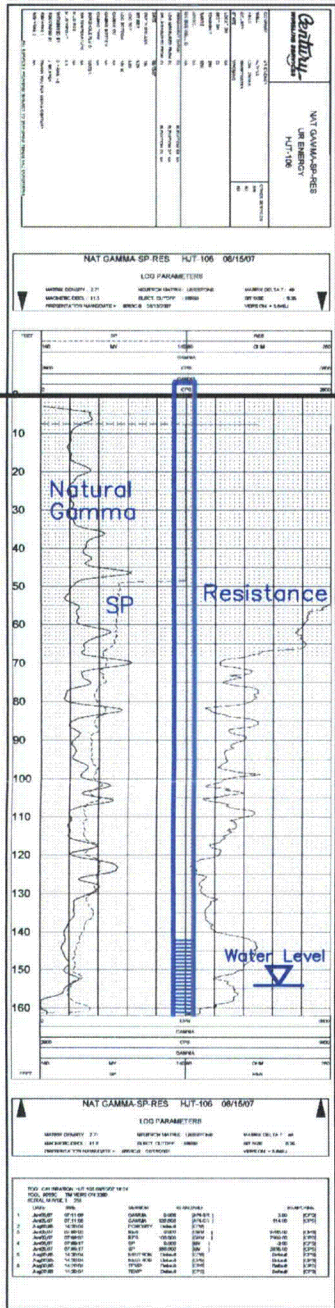
**ATTACHMENT D6-3**

**Well Completion Logs**

**List of Well Completion Logs in Attachment D6-3**

(see Table D6-5 for summary of well information)

<i>DE Horizon</i>		<i>HJ Horizon</i>		<i>KM Horizon</i>	
	HJT-106		HJMP-101		HJMU-101
	HJT-107		HJMP-102		HJMU-102
	LC-29M		HJMP-103		HJMU-103
	LC-30M		HJMP-104		HJMU-104
	LC-31M		HJMP-105		HJMU-105
	MB-1		HJMP-106		HJMU-106
	MB-7		HJMP-107		HJMU-107
	MB-10		HJMP-108		HJMU-108
<i>FG Horizon</i>			HJMP-109		HJMU-109
	HJMO-102		HJMP-110		HJMU-110
	HJMO-101		HJMP-111		HJMU-111
	HJMO-103		HJMP-112		HJMU-112
	HJMO-104		HJMP-113		HJMU-113
	HJMO-105		HJMP-114		HJMU-114
	HJMO-106		HJT-101		LC-17M
	HJMO-107		HJT-102		LC-20M
	HJMO-108		HJT-103		LC-23M
	HJMO-109		HJT-104		LC-24M
	HJMO-110		HJT-105		LC-27M
	HJMO-111		LC-16M		LC-28M
	HJMO-112		LC-19M		UKMP-101
	HJMO-113		LC-22M		UKMP-102
	HJMO-114		LC-26M		UKMP-103
	LC-15M		UKMO-101		MB-4
	LC-18M		UKMO-102		UKMU-101
	LC-21M		UKMO-103		UKMU-102
	LC-25M		MB-3B		UKMU-103
	MB-2		MB-6		
	MB-5		MB-9		
	MB-8				



Vertical Scale: 1"=50'

HJT-106

Ground Level

No lithology data	BC
SANDSTONE, shaley	
SANDSTONE	
MUDSTONE	
MUDSTONE, sandy	DE
SANDSTONE	

Lost Creek ISR, LLC  
WELL COMPLETION REPORT

WELL # HJT-106 SEO # 179861 Date Drilled: 8-15-07

Location: E 744,221 / N 534,573 (NAD 27)

Ground Elev: 6933.14' Measure Point Elev: 6935.14'

TD: 162' Hole Dia.: 7-7/8"

CASED to: 162' Casing: PVC SDR17 ID: 4.5" OD: 5"

GROUT: Portland Cement - Type I/II  
 Pumped thru tremie pipe set at 142'

COMPLETION Aquifer: DE Sand

Static Water Level: Depth 154' Elev: 6781' (avg.)

UNDERREAM: Blade Dia: N/A

Intervals: from \_\_\_\_\_ to \_\_\_\_\_ / length \_\_\_\_\_  
 from \_\_\_\_\_ to \_\_\_\_\_ / length \_\_\_\_\_

SLOTTED CASING

Description	Depth From - To	Elev. / From - To	Length
Slotted Casing	142' - 162'	6793' - 6773'	20'

SCREEN SPECIFICATIONS:

Slot: \_\_\_\_\_ Composition N/A

FILTER PACKING:

Volume: 6 bags Sand Specs. \_\_\_\_\_

Method: tremie 142'-162'

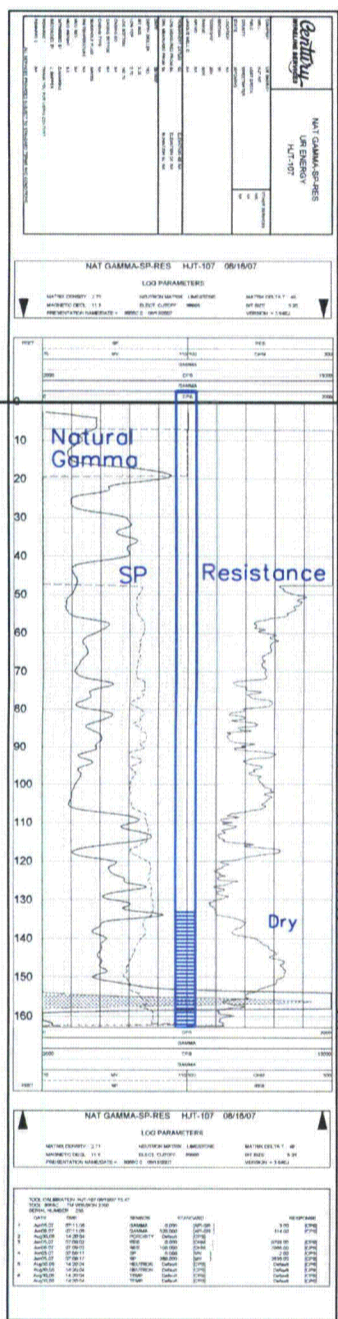
WELL STIMULATION: Method Airlift

Yield: Good / Moderate / Poor / None



HJT-107

Lost Creek ISR, LLC  
WELL COMPLETION REPORT



WELL # HJT-107 SEO # 179862 Date Drilled: 9-6-07  
 Location: E 745,230 / N 534,833 (NAD 27)  
 Ground Elev: 6942.69 Measure Point Elev: 6944.34  
 TD: 163 ft. Hole Dia.: 7-7/8"  
 CASED to: 163' Casing: PVC SDR17 ID: 4.5" OD: 5"  
 GROUT: Portland Cement - Type I/II  
 Pumped thru tremie pipe set at 133'  
 COMPLETION Aquifer: DE Sand  
 Static Water Level: Depth dry Elev: N/A

UNDERREAM: Blade Dia: N/A  
 Intervals: from \_\_\_\_\_ to \_\_\_\_\_ / length \_\_\_\_\_  
 from \_\_\_\_\_ to \_\_\_\_\_ / length \_\_\_\_\_

SLOTTED CASING

Description	Depth From - To	Elev. / From - To	Length
Slotted Casing	133' - 163'	6811' - 6781'	30'

SCREEN SPECIFICATIONS:

Slot: N/A Composition N/A

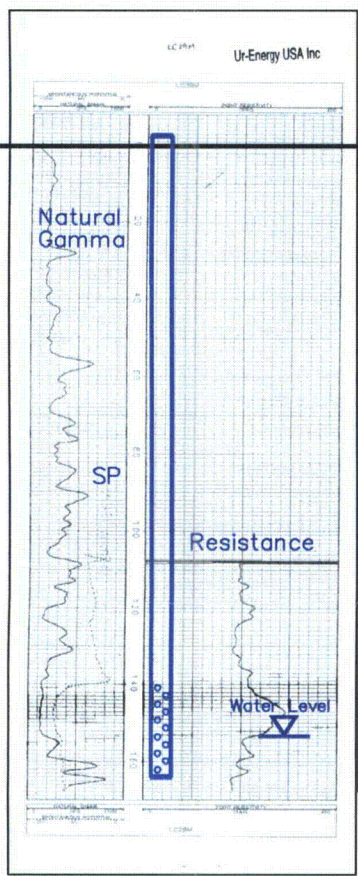
FILTER PACKING:

Volume: 15 bags <sup>3</sup> Sand Specs. \_\_\_\_\_  
 Method: tremie 133'-163'

WELL STIMULATION: Method Airlift

Yield: Good / Moderate / Poor / None

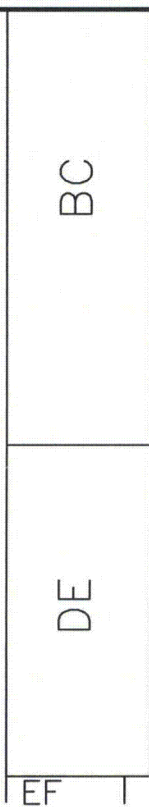
Vertical Scale: 1"=50'



Vertical Scale: 1"=50'

LC29M

Ground Level  
No lithology data



Lost Creek ISR, LLC  
WELL COMPLETION REPORT

WELL # LC29M SEO # 175260 Date Drilled: 8-30-06

Location: E 744,547 / N 534,837 (NAD 27)

Ground Elev: 6935.11 Measure Point Elev: 6936.86

TD: 171 ft. Hole Dia.: 7-7/8"

CASED to: 140' Casing: PVC SDR17 ID: 4.5" OD: 5"

GROUT: Portland Cement - Type I/II  
Pumped thru casing, displaced to surface with water

COMPLETION Aquifer: DE Sand  
Static Water Level: Depth 155' Elev: 6782' (avg.)

UNDERREAM: Blade Dia: N/A

Intervals: from \_\_\_\_\_ to \_\_\_\_\_ / length \_\_\_\_\_  
from \_\_\_\_\_ to \_\_\_\_\_ / length \_\_\_\_\_

PERFORATED CASING COMPLETION

Description	Depth		Elev.		Length
	From	To	From	To	
<u>Perf. Casing</u>	<u>140'</u>	<u>164'</u>	<u>6797'</u>	<u>6773'</u>	<u>24'</u>
_____	_____	_____	_____	_____	_____
_____	_____	_____	_____	_____	_____
_____	_____	_____	_____	_____	_____

SCREEN SPECIFICATIONS:

Slot: \_\_\_\_\_ Composition N/A

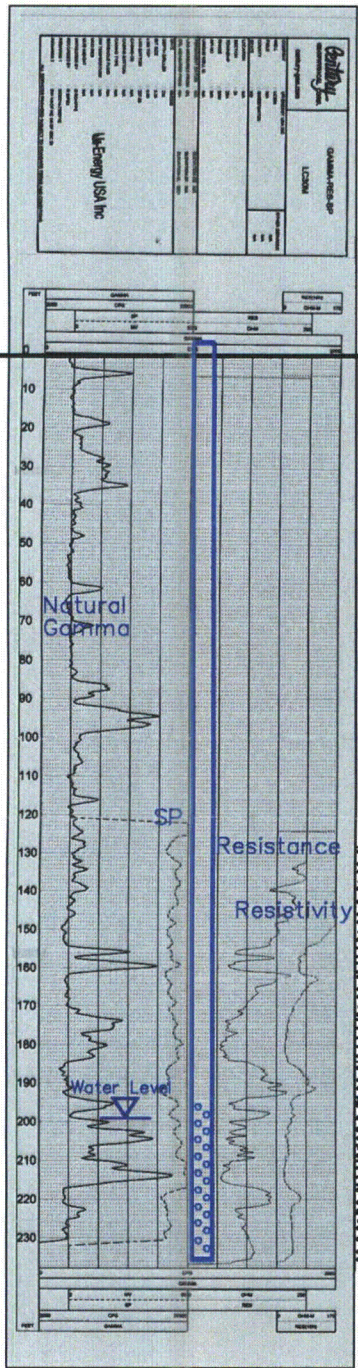
FILTER PACKING:

Volume: \_\_\_\_\_ (bags)(ft<sup>3</sup>) Sand Specs. \_\_\_\_\_  
Method: N/A

WELL STIMULATION: Method N/A

Yield: Good / Moderate / Poor





LC30M

Lost Creek ISR, LLC  
WELL COMPLETION REPORT

WELL # LC30M SEO # 175262 Date Drilled: 8-23-06

Location: E 736,276 / N 532,836 (NAD 27)

Ground Elev: 6925.10' Measure Point Elev: 6927.40'

TD: 236' Hole Dia.: 7-7/8"

CASED to: 196' Casing: PVC SDR17 ID: 4.5" OD: 5"

GROUT: Portland Cement - Type I/II  
 Pumped thru casing, displaced to surface with water

COMPLETION Aquifer: DE Sand

Static Water Level: Depth 199' Elev: 6728'

UNDERREAM: Blade Dia: N/A

Intervals: from \_\_\_\_\_ to \_\_\_\_\_ / length \_\_\_\_\_  
 from \_\_\_\_\_ to \_\_\_\_\_ / length \_\_\_\_\_

PERFORATED CASING

Description	Depth		Elev.		Length
	From	To	From	To	
<u>K-packer</u>		<u>N/A</u>			
<u>Perf. Casing</u>	<u>196'</u>	<u>236'</u>	<u>6731'</u>	<u>6691'</u>	<u>40'</u>

SCREEN SPECIFICATIONS:

Slot: \_\_\_\_\_ Composition N/A

FILTER PACKING:

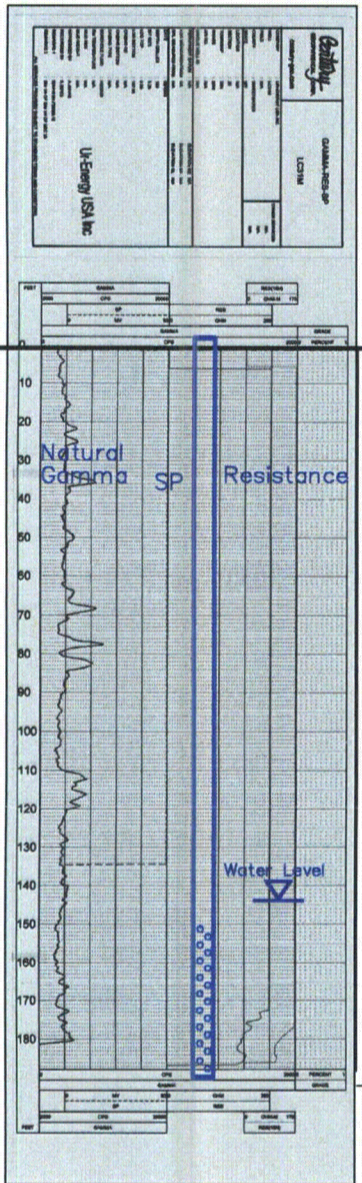
Volume: \_\_\_\_\_ (bags)(ft<sup>3</sup>) Sand Specs. \_\_\_\_\_

Method: N/A

WELL STIMULATION: Method Airlift

Yield: Good / Moderate / Poor





LC31M

Ground Level	No lithology data	BC
		DE
		EF

Lost Creek ISR, LLC  
WELL COMPLETION REPORT

WELL # LC31M    SEO # 175268    Date Drilled: 9-19-06

Location: E 733,380 / N 524,434    (NAD 27)

Ground Elev: 6804.55'    Measure Point Elev: 6805.83

TD: 191 ft.    Hole Dia.: 7-7/8"

CASED to: 150'    Casing: PVC SDR17 ID: 4.5" OD: 5"

GROUT: Portland Cement – Type I/II  
 Pumped thru casing, displaced to surface with water

COMPLETION Aquifer:    DE Sand  
 Static Water Level: Depth 144' Elev: 6662' (avg.)

UNDERREAM:    Blade Dia: N/A

Intervals: from \_\_\_\_\_ to \_\_\_\_\_ / length \_\_\_\_\_  
 from \_\_\_\_\_ to \_\_\_\_\_ / length \_\_\_\_\_

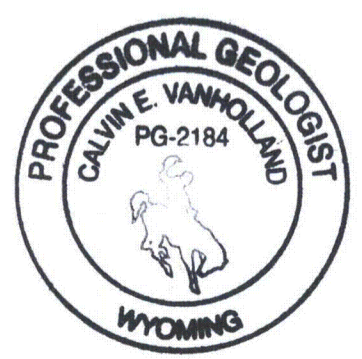
PERFORATED CASING COMPLETION:

Description	Depth		Elev.		Length
	From	To	From	To	
<u>Perf. Casing</u>	<u>150'</u>	<u>190'</u>	<u>6805'</u>	<u>6614'</u>	<u>40'</u>
_____	_____	_____	_____	_____	_____
_____	_____	_____	_____	_____	_____
_____	_____	_____	_____	_____	_____

SCREEN SPECIFICATIONS:  
 Slot: \_\_\_\_\_ Composition N/A

FILTER PACKING:  
 Volume: \_\_\_\_\_ (bags)(ft<sup>3</sup>)    Sand Specs. \_\_\_\_\_  
 Method: N/A

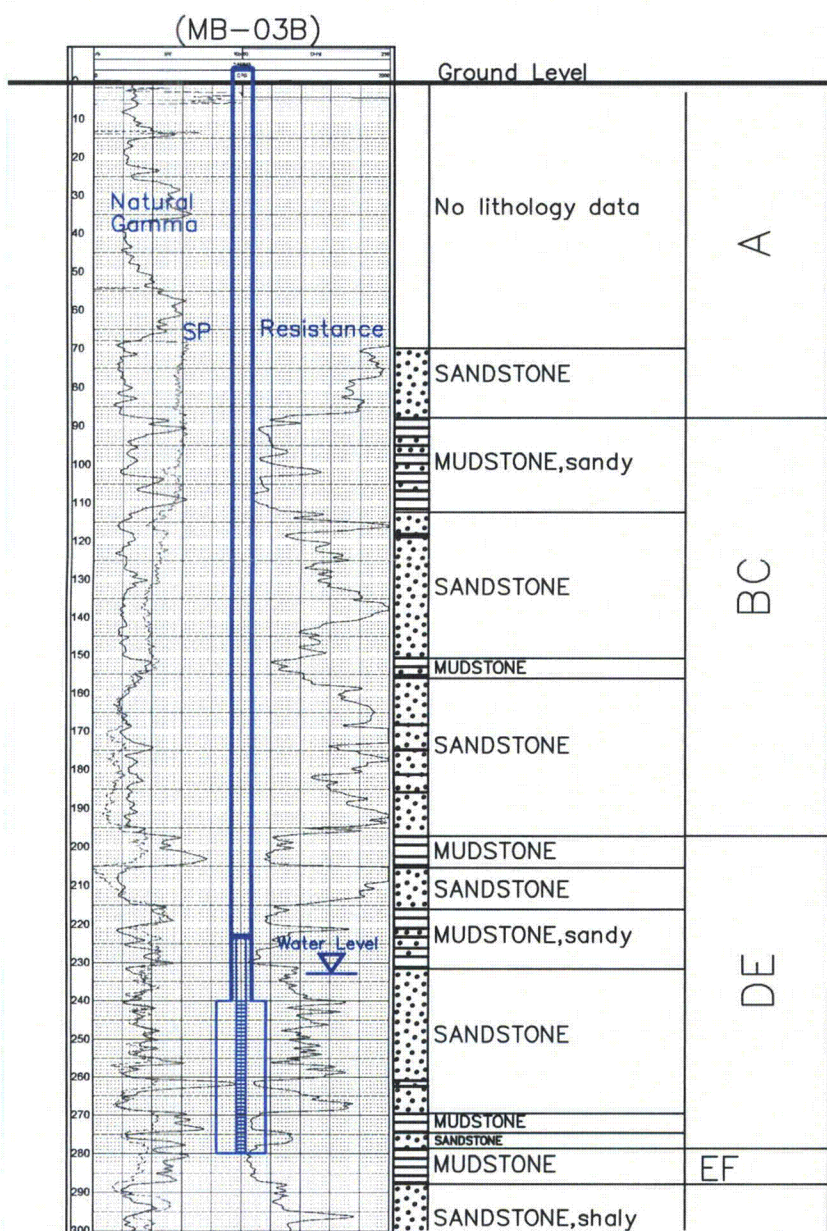
WELL STIMULATION: Method N/A  
 Yield: Good / Moderate / Poor





MB-01

Lost Creek ISR, LLC  
WELL COMPLETION REPORT



Vertical Scale: 1"=50'

NOTE: MB-01 was drilled with air. Hole made no water. Hole not logged. Log for MB-03B used here as representative.

WELL # MB-01 SEO # 188852 Date Drilled: 10-6-08

Location: E 736,248 / N 535,851 (NAD 27)

Ground Elev: 6984.39 Measure Point Elev: 6985.89

TD: 300 ft. Hole Dia.: 7-7/8"

CASED to: 240' Casing: PVC SDR17 ID: 4.5" OD: 5"

GROUT: Portland Cement - Type I/II  
Pumped thru casing, displaced to surface with water

COMPLETION Aquifer: DE Sand

Static Water Level: Depth 233' Elev: 6752' (avg.)

UNDERREAM: Blade Dia: 10-1/2"

Intervals: from 240' to 280' /length 40'

from \_\_\_\_\_ to \_\_\_\_\_ /length \_\_\_\_\_

SCREEN LINER ASSEMBLY

Description	Depth		Elev.		Length
	From	To	From	To	
K-packer		233'		6752'	
Screen	240'	280'	6745'	6705'	40'

SCREEN SPECIFICATIONS:

Slot: 0.020" Composition 3" PVC

FILTER PACKING:

Volume: \_\_\_\_\_ (bags)(ft<sup>3</sup>) Sand Specs. \_\_\_\_\_

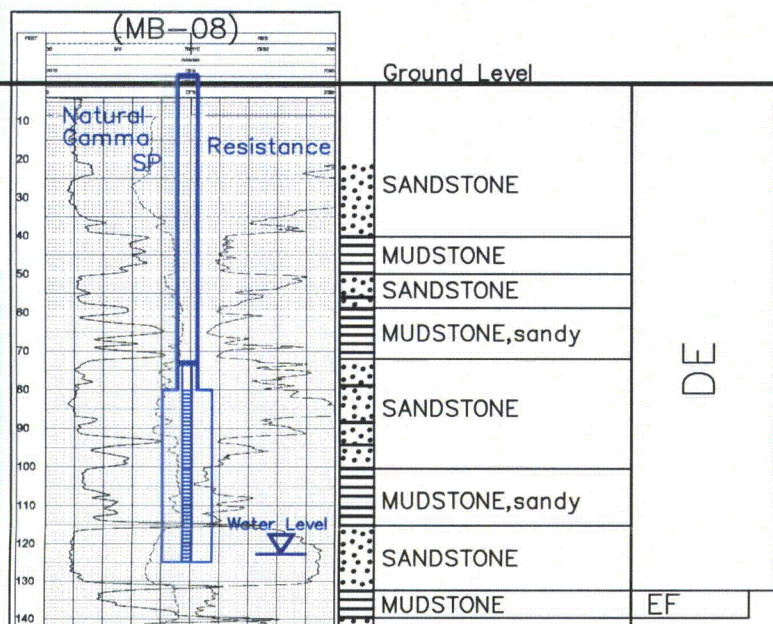
Method: N/A

WELL STIMULATION: Method Airlift

Yield: Good / Moderate / Poor



MB-07



Vertical Scale: 1"=50'

NOTE: MB-07 was drilled with air. Hole made no water. Hole not logged. Log for MB-08 used here as representative.

Lost Creek ISR, LLC  
WELL COMPLETION REPORT

WELL # MB-07 SEO # 188858 Date Drilled: 10-22-08

Location: E 753,266 / N 538,981 (NAD 27)

Ground Elev: 6983.38 Measure Point Elev: 6984.88

TD: 140 ft. Hole Dia.: 7-7/8"

CASED to: 80' Casing: PVC SDR17 ID: 4.5" OD: 5"

GROUT: Portland Cement - Type I/II  
 Pumped thru casing, displaced to surface with water

COMPLETION Aquifer: DE Sand

Static Water Level: Depth 123' Elev: 6861' (typical)

UNDERREAM: Blade Dia: 10-1/2"  
 Intervals: from 80' to 125' / length 45'  
 from \_\_\_\_\_ to \_\_\_\_\_ / length \_\_\_\_\_

SCREEN LINER ASSEMBLY

Description	Depth		Elev.		Length
	From	To	From	To	
K-packer		73'		6911'	
Screen	80'	125'	6904'	6859'	45'

SCREEN SPECIFICATIONS:

Slot: 0.020" Composition 3" PVC

FILTER PACKING:

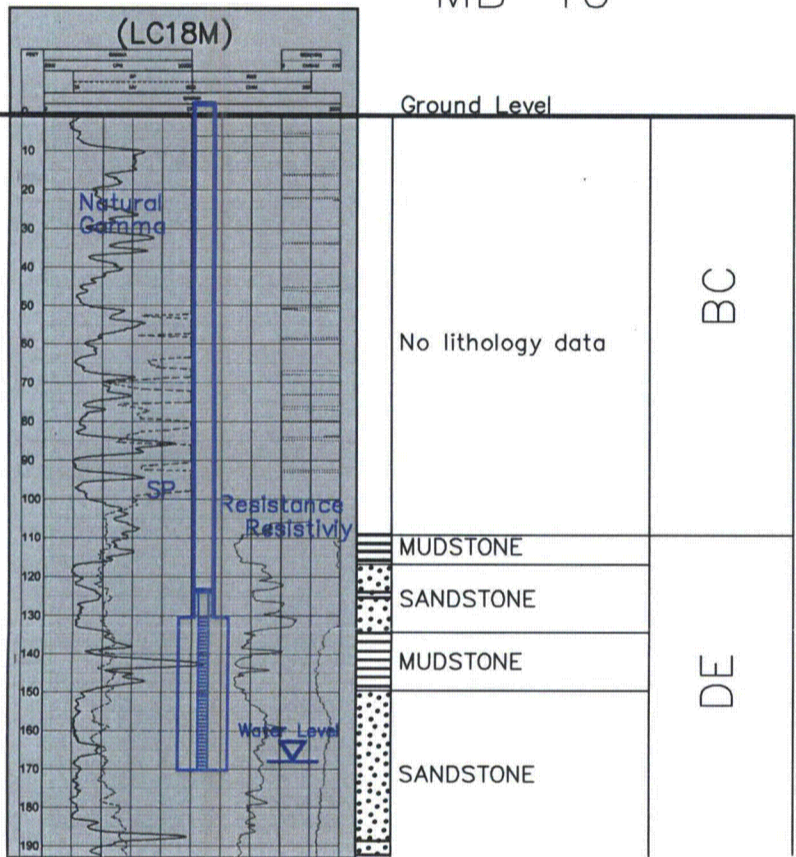
Volume: \_\_\_\_\_ (bags)(ft<sup>3</sup>) Sand Specs. \_\_\_\_\_  
 Method: N/A

WELL STIMULATION: Method Airlift

Yield: Good / Moderate / Poor

MB-10

Lost Creek ISR, LLC  
WELL COMPLETION REPORT



Vertical Scale: 1"=50'

NOTE: MB-10 was drilled with air. Hole made no water. Hole not logged. Log for LC18M used here as representative.

WELL # MB-10 SEO # 188861 Date Drilled: 10-3-08

Location: E 743,348 / N 535,293 (NAD 27)

Ground Elev: 6939.20' Measure Point Elev: 6940.70'

TD: 190' Hole Dia.: 7-7/8"

CASED to: 130' Casing: PVC SDR17 ID: 4.5" OD: 5"

GROUT: Portland Cement - Type I/II  
 Pumped thru casing, displaced to surface with water

COMPLETION Aquifer: DE Sand

Static Water Level: Depth 168' Elev: 6775' (Avg)

UNDERREAM: Blade Dia: 10.5"

Intervals: from 130' to 160' /length 40'  
 from \_\_\_\_\_ to \_\_\_\_\_ /length \_\_\_\_\_

SCREEN LINER ASSEMBLY

Description	Depth		Elev.		Length
	From	To	From	To	
K-packer		123'		6820'	
Screen	130'	170'	6813'	6773'	40'

SCREEN SPECIFICATIONS:

Slot: 0.020" Composition 3" PVC

FILTER PACKING:

Volume: \_\_\_\_\_ (bags)(ft<sup>3</sup>) Sand Specs. \_\_\_\_\_  
 Method: N/A

WELL STIMULATION: Method Airlift

Yield: Good / Moderate / Poor



Lost Creek ISR, LLC  
WELL COMPLETION REPORT

HJMO-101

WELL # HJMO-101 SEO # 179865 Date Drilled: 8-2-07

Location: E 743,281 / N 534,988 (NAD 27)

Ground Elev: 6904.24 Measure Point Elev: 6905.45

TD: 326 ft. Hole Dia.: 7-7/8"

CASED to: 295 Casing: PVC SDR17 ID: 4.5" OD: 5"

GROUT: Portland Cement - Type I/II  
 Pumped thru casing, displaced to surface with water

COMPLETION Aquifer: LFG Sand

Static Water Level: Depth 170' Elev: 6736' (avg.)

UNDERREAM: Blade Dia: 10-1/2"

Intervals: from 295' to 326' / length 31'  
 from \_\_\_\_\_ to \_\_\_\_\_ / length \_\_\_\_\_

SCREEN LINER ASSEMBLY

Description	Depth	Elev.	Length
	From - To	From - To	
<u>K-packer</u>	<u>283'</u>	<u>6622'</u>	
<u>Screen</u>	<u>295' 325'</u>	<u>6610' 6580'</u>	<u>30'</u>
_____	_____	_____	_____
_____	_____	_____	_____

SCREEN SPECIFICATIONS:

Slot: 0.020" Composition 3" PVC

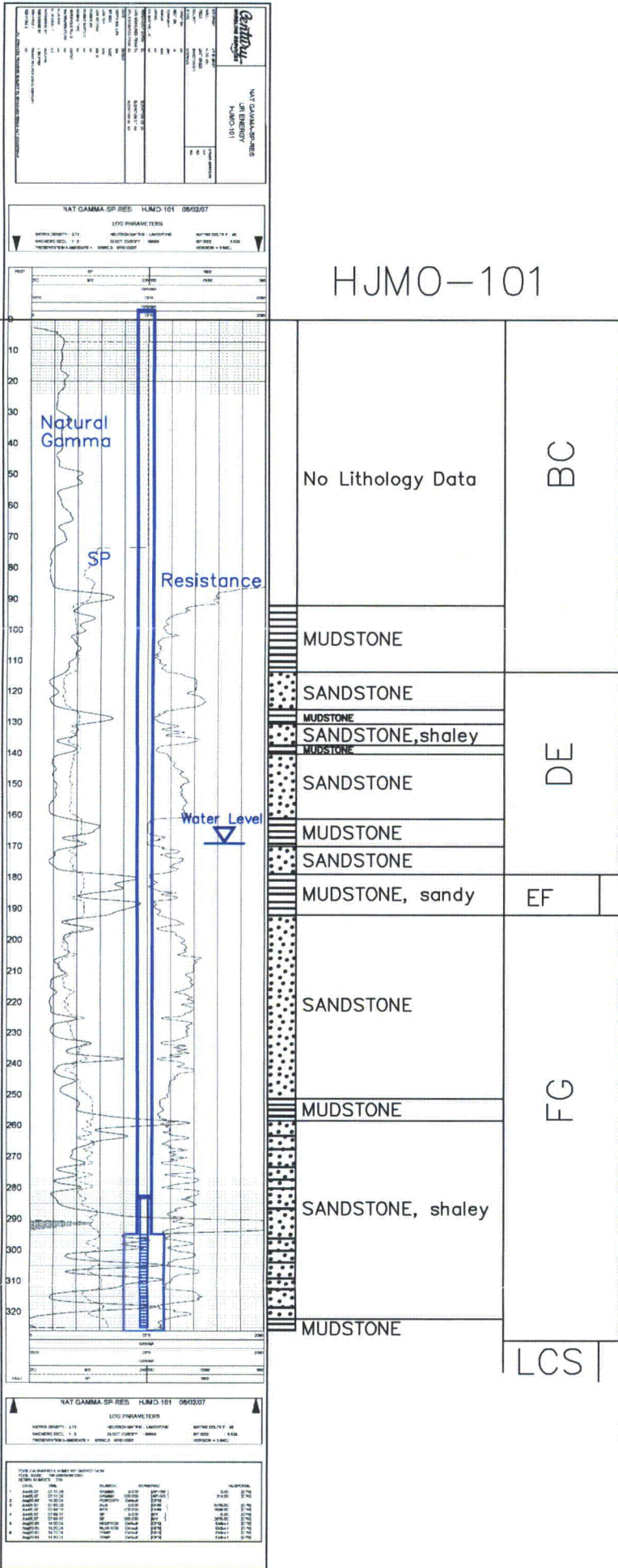
FILTER PACKING:

Volume: \_\_\_\_\_ (bags)(ft<sup>3</sup>) Sand Specs. \_\_\_\_\_

Method: N/A

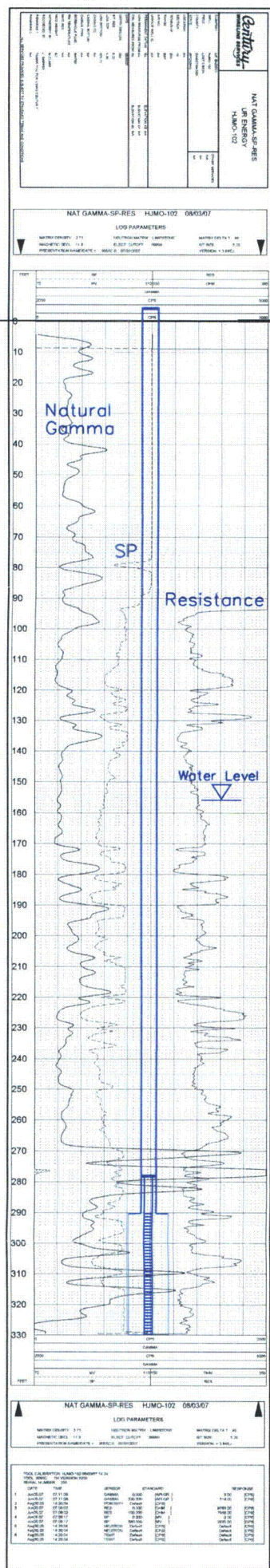
WELL STIMULATION: Method Airlift

Yield: Good / Moderate / Poor



Vertical Scale: 1"=50'





HJMO-102  
(MO-108)

Ground Level

0 - 100'	No Lithology Data	BC
100 - 110'	MUDSTONE	DE
110 - 120'	SANDSTONE shaley	
120 - 130'	MUDSTONE	
130 - 156'	SANDSTONE	
156 - 180'	MUDSTONE	FC
180 - 190'	SANDSTONE	
190 - 200'	MUDSTONE	
200 - 210'	SANDSTONE	
210 - 220'	MUDSTONE	
220 - 230'	SANDSTONE	LCS
230 - 240'	MUDSTONE, sandy	
240 - 250'	SANDSTONE, shaley	
250 - 330'	MUDSTONE	

Vertical Scale: 1"=50'

Lost Creek ISR, LLC  
WELL COMPLETION REPORT

WELL # HJMO-102 SEO # 179868 Date Drilled: 8-3-07

Location: E 742,549 / N 534,762 (NAD 27)

Ground Elev: 6934.56 Measure Point Elev: 6934.56

TD: 330' Hole Dia.: 7-7/8"

CASED to: 290' Casing: PVC SDR17 ID: 4.5" OD: 5"

GROUT: Portland Cement - Type I/II  
Pumped thru casing, displaced to surface with water

COMPLETION Aquifer: FG Sand

Static Water Level: Depth 156' Elev: 6778' (avg)

UNDERREAM: Blade Dia: 10.5"

Intervals: from 290' to 330' / length 40'

from \_\_\_\_\_ to \_\_\_\_\_ / length \_\_\_\_\_

SCREEN LINER ASSEMBLY

Description	Depth		Elev.		Length
	From - To	/ From - To	From - To	/ From - To	
K-packer	278'		6657'		
Screen	290'	330'	6645'	6605'	40'

SCREEN SPECIFICATIONS:

Slot: 0.020" Composition 3" PVC

FILTER PACKING:

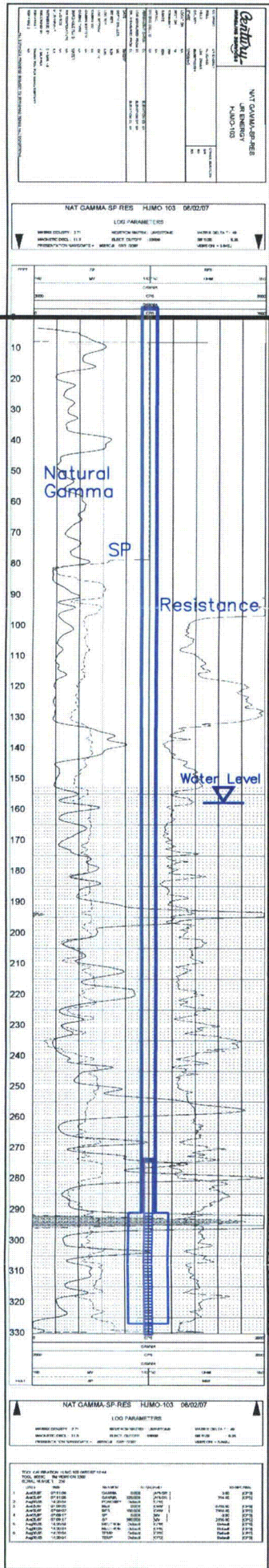
Volume: \_\_\_\_\_ (bags)(ft<sup>3</sup>) Sand Specs. \_\_\_\_\_

Method: N/A

WELL STIMULATION: Method Airlift

Yield: Good / Moderate / Poor





HJMO-103  
(MO-107)

Lost Creek ISR, LLC  
WELL COMPLETION REPORT

WELL # HJMO-103 SEO # 179871 Date Drilled: 08-02-07

Location: E 742,646 / N 535,101 (NAD 27)

Ground Elev: 6936.29 Measure Point Elev: 6936.29

TD: 331 ft. Hole Dia.: 7-7/8"

CASED to: 291' Casing: PVC SDR17 ID: 4.5" OD: 5"

GROUT: Portland Cement - Type I/II  
Pumped thru casing, displaced to surface with water

COMPLETION Aquifer: FG Sand

Static Water Level: Depth 158' Elev: 6778' (avg.)

UNDERREAM: Blade Dia: 10-1/2"

Intervals: from 291' to 327' / length 36'  
from \_\_\_\_\_ to \_\_\_\_\_ / length \_\_\_\_\_

SCREEN LINER ASSEMBLY

Description	Depth		Elev.		Length
	From	To	From	To	
K-packer	279'		6657'		
Screen	291'	331'	6645'	6605'	40'

SCREEN SPECIFICATIONS:

Slot: 0.020" Composition 3" PVC

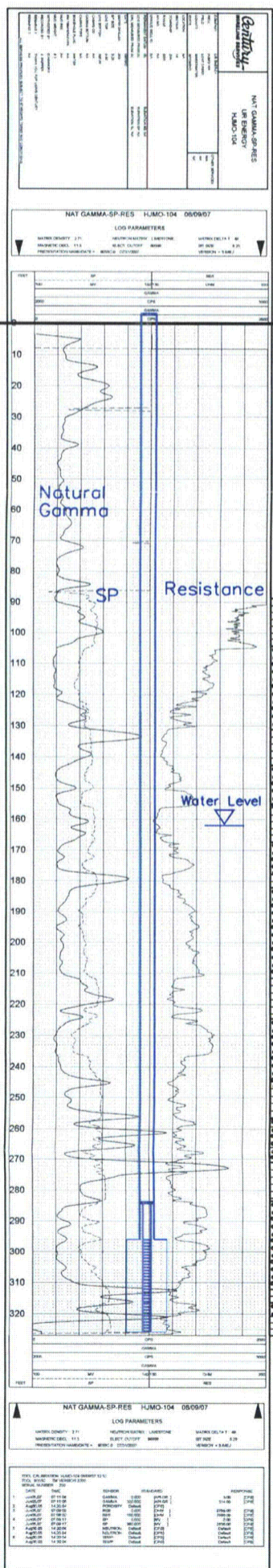
FILTER PACKING:

Volume: \_\_\_\_\_ (bags)(ft<sup>3</sup>) Sand Specs. \_\_\_\_\_  
Method: N/A

WELL STIMULATION: Method Airlift

Yield: Good / Moderate / Poor





HJMO-104

Lost Creek ISR, LLC

WELL COMPLETION REPORT

WELL # HJMU-101 SEO # 179874 Date Drilled: 8-9-07

Location: E 742,897 / N 534,899 (NAD 27)

Ground Elev: 6939.51' Measure Point Elev: 6940.76'

TD: 328 ft. Hole Dia.: 7-7/8"

CASED to: 296' Casing: PVC SDR17 ID: 4.5" OD: 5"

GROUT: Portland Cement - Type I/II  
 Pumped thru casing, displaced to surface with water

COMPLETION Aquifer: LFG Sand

Static Water Level: Depth 162 Elev: 6779' (avg.)

UNDERREAM: Blade Dia: 10.5"  
 Intervals: from 296' to 326' /length 30'  
 from \_\_\_\_\_ to \_\_\_\_\_ /length \_\_\_\_\_

SCREEN LINER ASSEMBLY

Description	Depth		Elev.		Length
	From - To		From - To		
K-packer	284'		6656'		
Screen	296'	326'	6644'	6614'	30'

SCREEN SPECIFICATIONS:

Slot: 0.020" Composition 3" PVC

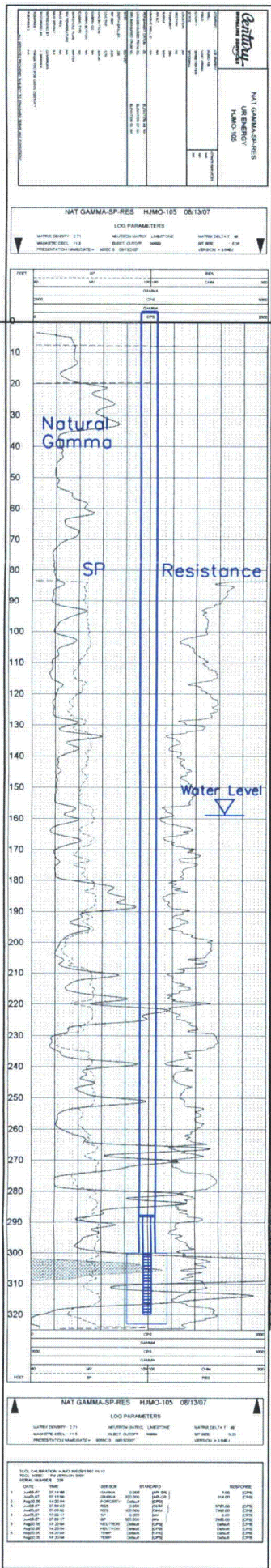
FILTER PACKING:

Volume: \_\_\_\_\_ (bags)(ft<sup>3</sup>) Sand Specs. \_\_\_\_\_  
 Method: N/A

WELL STIMULATION: Method Airlift

Yield: Good / Moderate / Poor





HJMO-105

Lost Creek ISR, LLC  
**WELL COMPLETION REPORT**

WELL # HJMO-105 SEO # 179877 Date Drilled: 08-13-07

Location: E 742,953 / N 535,074 (NAD 27)

Ground Elev: 6936.84 Measure Point Elev: 6938.00

TD: 326 ft. Hole Dia.: 7-7/8"

CASED to: 300' Casing: PVC SDR17 ID: 4.5" OD: 5"

GROUT: Portland Cement - Type I/II  
 Pumped thru casing, displaced to surface with water

COMPLETION Aquifer: LFG Sand

Static Water Level: Depth 159' Elev: 6779' (avg.)

UNDERREAM: Blade Dia: 10-1/2"

Intervals: from 300' to 323' / length 23'

from \_\_\_\_\_ to \_\_\_\_\_ / length \_\_\_\_\_

**SCREEN LINER ASSEMBLY**

Description	Depth		Elev.		Length
	From	To	From	To	
K-packer	288'		6650'		
Screen	300'	320'	6638'	6618'	20'

**SCREEN SPECIFICATIONS:**

Slot: 0.020" Composition 3" PVC

**FILTER PACKING:**

Volume: \_\_\_\_\_ (bags)(ft<sup>3</sup>) Sand Specs. \_\_\_\_\_

Method: N/A

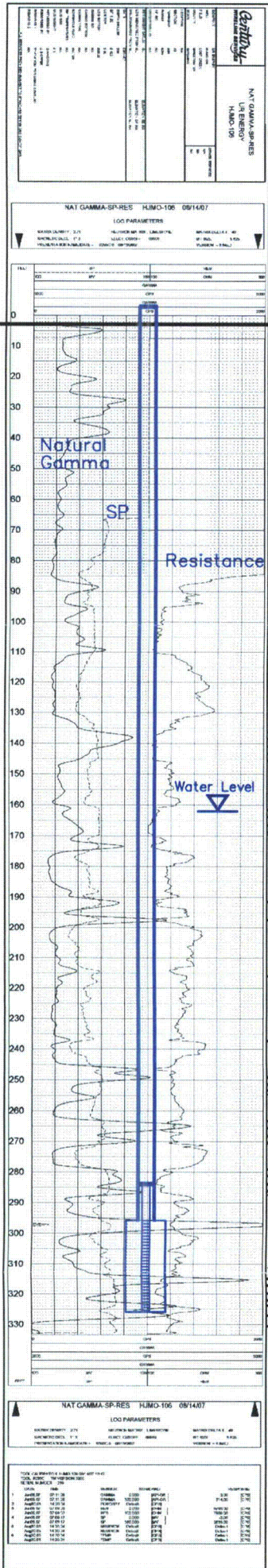
WELL STIMULATION: Method Airlift

Yield: Good / Moderate / Poor



HJMO-106  
(MO-106)

Lost Creek ISR, LLC  
WELL COMPLETION REPORT



Vertical Scale: 1"=50'

0 - 80	No Lithology Data	BC
80 - 170	SANDSTONE MUDSTONE SANDSTONE MUDSTONE SANDSTONE MUDSTONE	DE
170 - 180	MUDSTONE	EF
180 - 320	SANDSTONE MUDSTONE, v. sandy SANDSTONE MUDSTONE, sandy SANDSTONE MUDSTONE SANDSTONE MUDSTONE SANDSTONE, shaley	FG
320 - 330		LCS

WELL # HJMO-106 SEO # 179880 Date Drilled: 8-14-07  
 Location: E 743,168 / N 535,258 (NAD 27)  
 Ground Elev: 6941.00' Measure Point Elev: 6941.75'  
 TD: 336' Hole Dia.: 7-7/8"  
 CASED to: 296' Casing: PVC SDR17 ID: 4.5" OD: 5"  
 GROUT: Portland Cement - Type I/II  
 Pumped thru casing, displaced to surface with water  
 COMPLETION Aquifer: LFG Sand  
 Static Water Level: Depth 162' Elev: 6780' (avg.)

UNDERREAM: Blade Dia: 10.5"  
 Intervals: from 296' to 326' / length 30'  
 from \_\_\_\_\_ to \_\_\_\_\_ / length \_\_\_\_\_

SCREEN LINER ASSEMBLY

Description	Depth	Elev.	Length
	From - To	/ From - To	
K-packer	<u>284'</u>	<u>6657'</u>	
Screen	<u>296' - 326'</u>	<u>6645' - 6615'</u>	<u>30'</u>

SCREEN SPECIFICATIONS:

Slot: 0.020" Composition 3" PVC

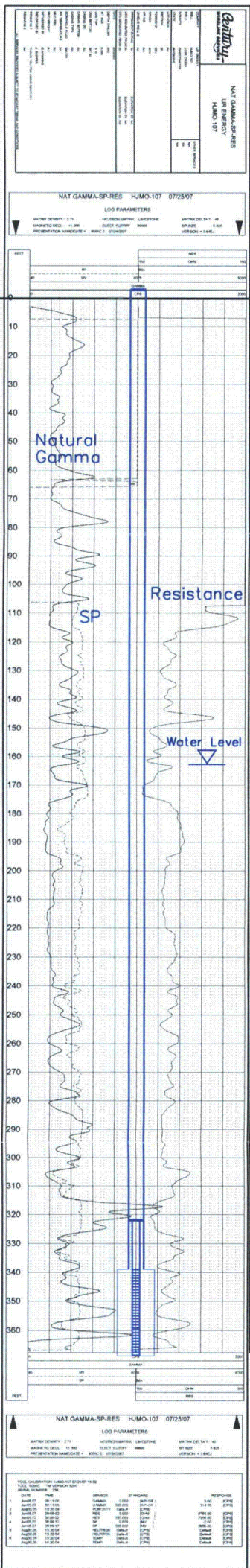
FILTER PACKING:

\_\_\_\_\_ (bags)(ft<sup>3</sup>) Sand Specs. \_\_\_\_\_  
 Method: N/A

WELL STIMULATION: Method Airlift

Yield: Good / Moderate / Poor





HJMO-107  
(MO-104)

Lost Creek ISR, LLC  
WELL COMPLETION REPORT

WELL # HJMO-107 SEO # 179883 Date Drilled: 07-25-07

Location: E 743,697 / N 534,790 (NAD 27)

Ground Elev: 6936.86 Measure Point Elev: 6937.86

TD: 370 ft. Hole Dia.: 7-7/8"

CASED to: 339' Casing: PVC SDR17 ID: 4.5" OD: 5"

GROUT: Portland Cement - Type I/II  
Pumped thru casing, displaced to surface with water

COMPLETION Aquifer: LFG Sand

Static Water Level: Depth 163' Elev: 6775' (avg.)

UNDERREAM: Blade Dia: 10-1/2"

Intervals: from 339' to 369' / length 30'

from \_\_\_\_\_ to \_\_\_\_\_ / length \_\_\_\_\_

SCREEN LINER ASSEMBLY

Description	Depth		Elev.		Length
	From	To	From	To	
K-packer		327'		6611'	
Screen	339'	369'	6599'	6569'	30'

SCREEN SPECIFICATIONS:

Slot: 0.020" Composition 3" PVC

FILTER PACKING:

Volume: \_\_\_\_\_ (bags)(ft<sup>3</sup>) Sand Specs. \_\_\_\_\_

Method: N/A

WELL STIMULATION: Method Airlift

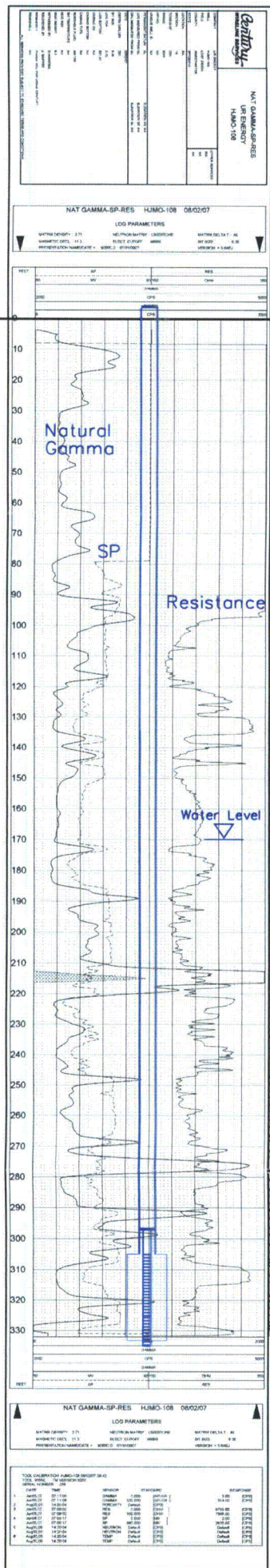
Yield: Good / Moderate / Poor

Vertical Scale: 1"=50'



HJMO-108

Lost Creek ISR, LLC  
WELL COMPLETION REPORT



WELL # HJMO-108 SEO # 179886 Date Drilled: 8-2-07

Location: E 743,461 / N 535,298 (NAD 27)

Ground Elev: 6950.64' Measure Point Elev: 6951.64'

TD: 335' Hole Dia.: 7-7/8"

CASED to: 305' Casing: PVC SDR17 ID: 4.5" OD: 5"

GROUT: Portland Cement - Type I/II  
Pumped thru casing, displaced to surface with water

COMPLETION Aquifer: LFG Sand

Static Water Level: Depth 170' Elev: 6782' (avg.)

UNDERREAM: Blade Dia: 10.5"

Intervals: from 305' to 333' / length 28'  
from \_\_\_\_\_ to \_\_\_\_\_ / length \_\_\_\_\_

SCREEN LINER ASSEMBLY

Description	Depth		Elev.		Length
	From	To	From	To	
K-packer	297'		6655'		
Screen	305'	335'	6647'	6617'	30'

SCREEN SPECIFICATIONS:

Slot: 0.020" Composition 3" PVC

FILTER PACKING:

Volume: \_\_\_\_\_ (bags)(ft<sup>3</sup>) Sand Specs. \_\_\_\_\_

Method: N/A

WELL STIMULATION: Method Airlift

Yield: Good / Moderate / Poor

Vertical Scale: 1"=50'



# HJMO-109

# Lost Creek ISR, LLC WELL COMPLETION REPORT

WELL # HJMO-109 SEO # 179889 Date Drilled: 07-10-07

Location: E 743,904 / N 534,825 (NAD 27)

Ground Elev: 6937.79 Measure Point Elev: 6938.95

TD: 379 ft. Hole Dia.: 7-7/8"

CASED to: 345' Casing: PVC SDR17 ID: 4.5" OD: 5"

GROUT: Portland Cement - Type I/II  
Pumped thru casing, displaced to surface with water

COMPLETION Aquifer: LFG Sand

Static Water Level: Depth 162' Elev: 6777' (avg.)

UNDERREAM: Blade Dia: 10-1/2"

Intervals: from 345' to 370' /length 25'

from \_\_\_\_\_ to \_\_\_\_\_ /length \_\_\_\_\_

### SCREEN LINER ASSEMBLY

Description	Depth	Elev.	Length
	From - To	/ From - To	
K-packer	325'	6614'	
Screen	345' - 375'	6594' - 6564'	30'

### SCREEN SPECIFICATIONS:

Slot: 0.020" Composition 3" PVC

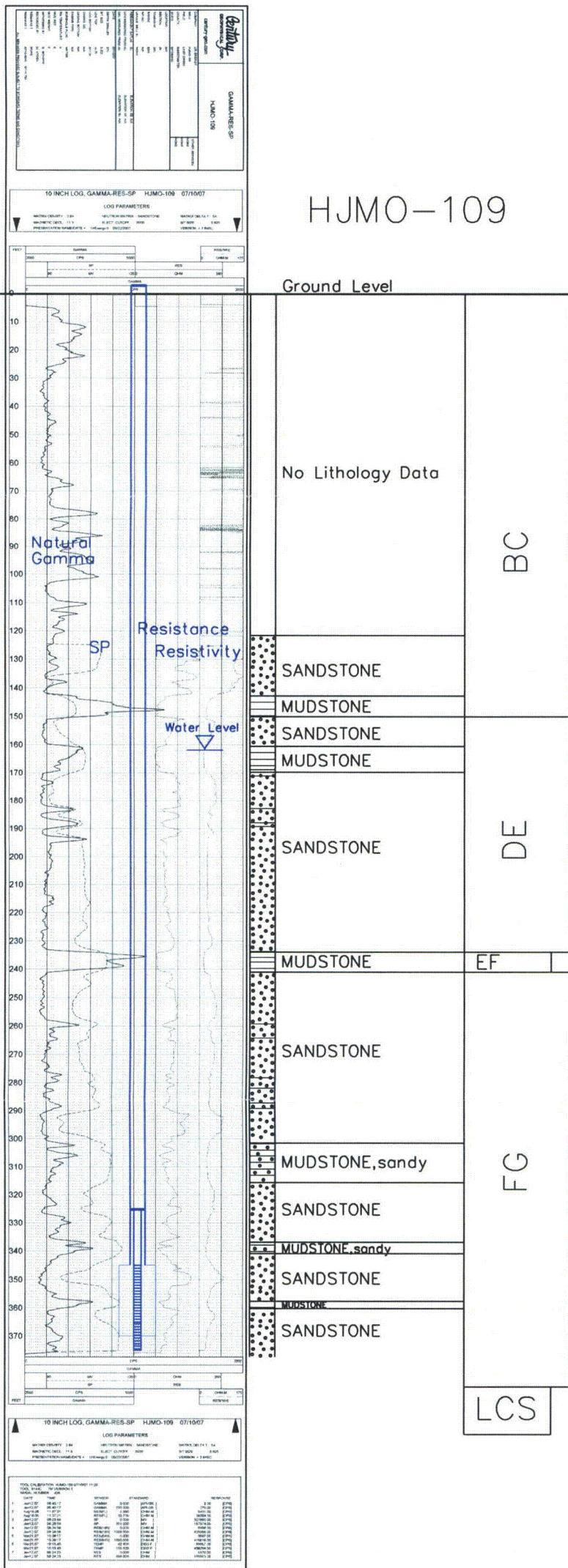
### FILTER PACKING:

Volume: \_\_\_\_\_ (bags)(ft<sup>3</sup>) Sand Specs. \_\_\_\_\_

Method: N/A

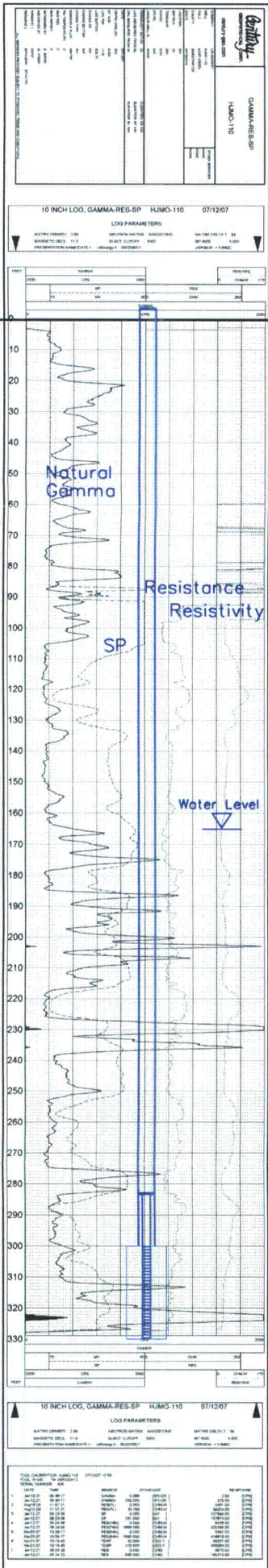
WELL STIMULATION: Method Airlift

Yield: Good / Moderate / Poor



Vertical Scale: 1"=50'





HJMO-110

Ground Level

No Lithology Data	BC
MUDSTONE	DE
SANDSTONE	
MUDSTONE	
SANDSTONE	
MUDSTONE, sandy	EF
SANDSTONE	FC
MUDSTONE, sandy	
SANDSTONE, v. shaley	
MUDSTONE	
SANDSTONE	
SANDSTONE, v. shaley	
MUDSTONE	
SANDSTONE	
MUDSTONE, sandy	LCS
SANDSTONE, shaley	

Lost Creek ISR, LLC  
WELL COMPLETION REPORT

WELL # HJMO-110 SEO # 179892 Date Drilled: 7-12-07

Location: E 743,675 / N 535,194 (NAD 27)

Ground Elev: 6945.92' Measure Point Elev: 6947.13'

TD: 330' Hole Dia.: 7-7/8"

CASED to: 300' Casing: PVC SDR17 ID: 4.5" OD: 5"

GROUT: Portland Cement - Type I/II  
 Pumped thru casing, displaced to surface with water

COMPLETION Aquifer: LFG Sand

Static Water Level: Depth 165' Elev: 6782' (avg.)

UNDERREAM: Blade Dia: 10.5"

Intervals: from 300' to 330' / length 30'  
 from \_\_\_\_\_ to \_\_\_\_\_ / length \_\_\_\_\_

SCREEN LINER ASSEMBLY

Description	Depth	Elev.	Length
	From - To	/ From - To	
K-packer	<u>288'</u>	<u>6659'</u>	
Screen	<u>300' - 330'</u>	<u>6647' - 6617'</u>	<u>30'</u>

SCREEN SPECIFICATIONS:

Slot: 0.020" Composition 3" PVC

FILTER PACKING:

Volume: \_\_\_\_\_ (bags)(ft<sup>3</sup>) Sand Specs. \_\_\_\_\_  
 Method: N/A

WELL STIMULATION: Method Airlift

Yield: Good / Moderate / Poor

Vertical Scale: 1"=50'



GAMMA-RS-SP	
HJMO-111	
10 INCH LOG, GAMMA-RS-SP HJMO-111 07/11/07	
LOG PARAMETER: RES	
WELL DEPTH: 333	WELL TYPE: SANDSTONE
WELL ID: 4.5	WELL OD: 5
WELL DATE: 07/11/07	WELL LOG: 07/11/07

HJMO-111  
(MO-105)

Lost Creek ISR, LLC  
WELL COMPLETION REPORT

WELL # HJMO-111 SEO # 179895 Date Drilled: 7-11-07  
 Location: E 743,825 / N 535,371 (NAD 27)  
 Ground Elev: 6949.38' Measure Point Elev: 6950.46'  
 TD: 333 ft. Hole Dia.: 7-7/8"

CASED to: 303' Casing: PVC SDR17 ID: 4.5" OD: 5"

GROUT: Portland Cement - Type I/II  
 Pumped thru casing, displaced to surface with water

COMPLETION Aquifer: LFG Sand  
 Static Water Level: Depth 166' Elev: 6784' (avg.)

UNDERREAM: Blade Dia: 10-1/2"  
 Intervals: from 303' to 333' /length 30'  
 from \_\_\_\_\_ to \_\_\_\_\_ /length \_\_\_\_\_

SCREEN LINER ASSEMBLY

Description	Depth		Elev.		Length
	From	To	From	To	
K-packer		288'		6661'	
Screen	303'	333'	6646'	6616'	30'

SCREEN SPECIFICATIONS:

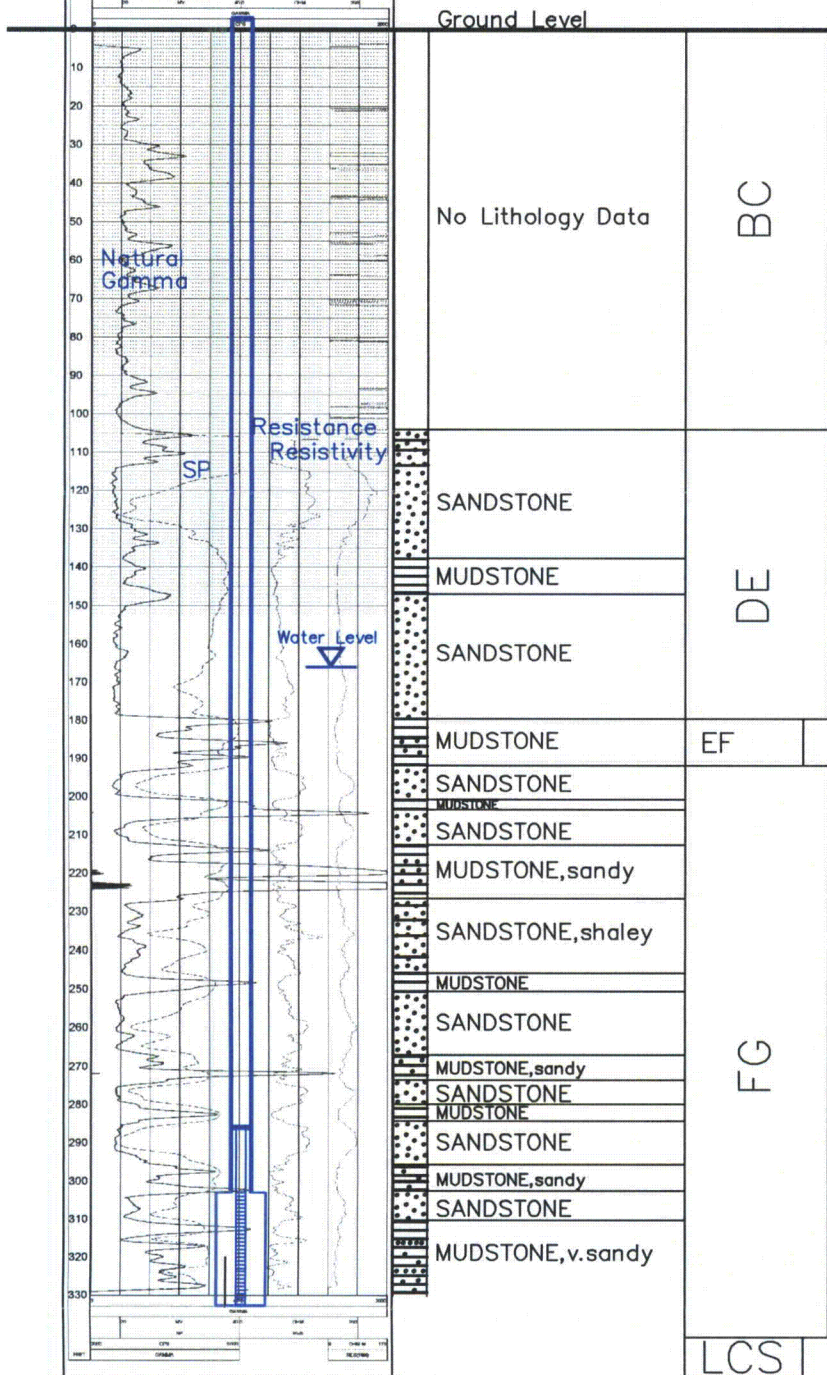
Slot: 0.020" Composition 3" PVC

FILTER PACKING:

Volume: \_\_\_\_\_ (bags)(ft<sup>3</sup>) Sand Specs. \_\_\_\_\_  
 Method: N/A

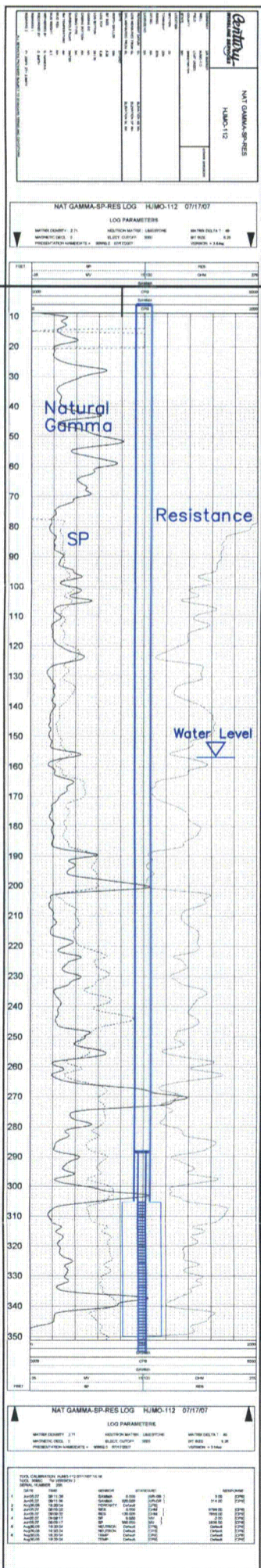
WELL STIMULATION: Method Airlift

Yield: Good / Moderate / Poor



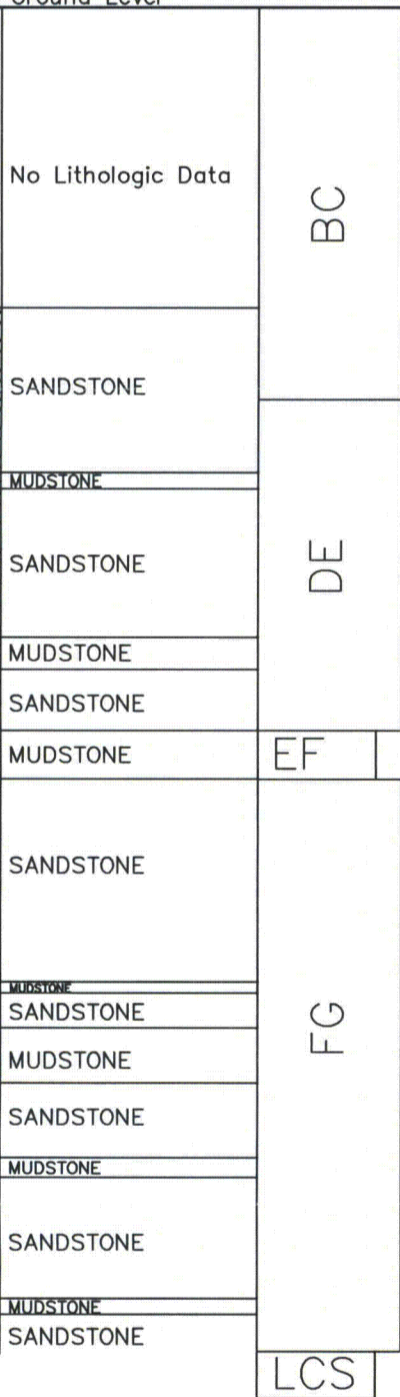
Vertical Scale: 1"=50'





HJMO-112  
(MO-103)

Ground Level



Lost Creek ISR, LLC  
WELL COMPLETION REPORT

WELL # HJMO-112 SEO # 179898 Date Drilled: 7-17-07

Location: E 744,375 / N 534,674 (NAD 27)

Ground Elev: 6934.76' Measure Point Elev: 6935.51'

TD: 355' Hole Dia.: 7-7/8"

CASED to: 305' Casing: PVC SDR17 ID: 4.5" OD: 5"

GROUT: Portland Cement - Type I/II  
Pumped thru casing, displaced to surface with water

COMPLETION Aquifer: LFG Sand  
Static Water Level: Depth 157' Elev: 6679'(avg.)

UNDERREAM: Blade Dia: 10.5"  
Intervals: from 305' to 350' /length 45'  
from \_\_\_\_\_ to \_\_\_\_\_ /length \_\_\_\_\_

SCREEN LINER ASSEMBLY				
Description	Depth	Elev.	Length	
	From - To	From - To		
K-packer	292'	6644'		
Screen	305' 355'	6631' 6581'	50'	

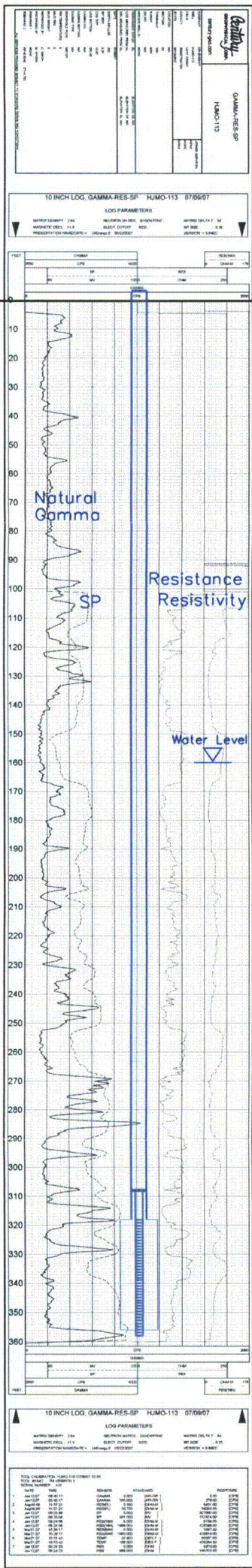
SCREEN SPECIFICATIONS:  
Slot: 0.020" Composition 3" PVC

FILTER PACKING:  
Volume: \_\_\_\_\_ (bags)(ft<sup>3</sup>) Sand Specs. \_\_\_\_\_  
Method: N/A

WELL STIMULATION: Method Airlift  
Yield: Good / Moderate / Poor

Vertical Scale: 1"=50'





Vertical Scale: 1"=50'

HJMO-113

Lost Creek ISR, LLC  
WELL COMPLETION REPORT

WELL # HJMO-113 SEO # 179901 Date Drilled: 7-9-07

Location: E 744,265 / N 534,805 (NAD 27)

Ground Elev: 6936.06 Measure Point Elev: 6936.97

TD: 362 ft. Hole Dia.: 7-7/8"

CASED to: 318' Casing: PVC SDR17 ID: 4.5" OD: 5"

GROUT: Portland Cement - Type I/II  
 Pumped thru casing, displaced to surface with water

COMPLETION Aquifer: LFG Sand

Static Water Level: Depth 160' Elev: 6777' (avg.)

UNDERREAM: Blade Dia: 10-1/2"

Intervals: from 318' to 356' / length 38'  
 from \_\_\_\_\_ to \_\_\_\_\_ / length \_\_\_\_\_

SCREEN LINER ASSEMBLY

Description	Depth	Elev.	Length
	From - To	/ From - To	
K-packer	308'	6628'	
Screen	318' - 358'	6621' - 6581'	40'

SCREEN SPECIFICATIONS:

Slot: 0.020" Composition 3" PVC

FILTER PACKING:

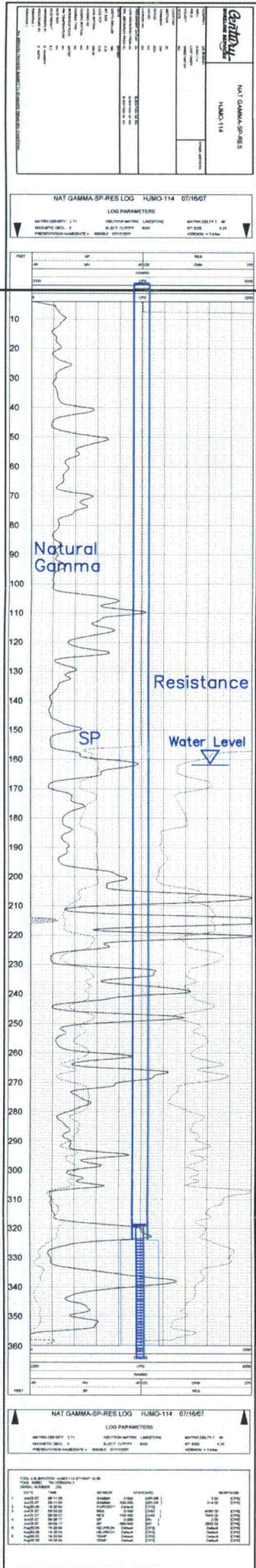
Volume: \_\_\_\_\_ (bags)(ft<sup>3</sup>) Sand Specs. \_\_\_\_\_

Method: N/A

WELL STIMULATION: Method Airlift

Yield: Good / Moderate / Poor





HJMO-114  
(MO-102)

Ground Level

0 - 162'	No lithology data	BC
162 - 170'	MUDSTONE	DE
170 - 178'	SANDSTONE	
178 - 186'	MUDSTONE	EF
186 - 194'	SANDSTONE	
194 - 202'	MUDSTONE	FG
202 - 210'	SANDSTONE	
210 - 218'	MUDSTONE	
218 - 226'	SANDSTONE	
226 - 234'	MUDSTONE	
234 - 290'	SANDSTONE, shaley	LCS
290 - 360'	SANDSTONE	

Vertical Scale: 1"=50'

Lost Creek ISR, LLC  
WELL COMPLETION REPORT

WELL # HJMO-114 SEO # 179904 Date Drilled: 7-16-07

Location: E 744,979 / N 534,676 (NAD27)

Ground Elev: 6939.09' Measure Point Elev: 6940.75'

TD: 364' Hole Dia.: 7-7/8"

CASED to: 324' Casing: PVC SDR17 ID: 4.5" OD: 5"

GROUT: Portland Cement - Type I/II  
Pumped thru casing, displaced to surface with water

COMPLETION Aquifer: LFG Sand

Static Water Level: Depth 162' Elev: 6779' (Avg)

UNDERREAM: Blade Dia: 10.5"

Intervals: from 324' to 360' / length 36'  
from \_\_\_\_\_ to \_\_\_\_\_ / length \_\_\_\_\_

SCREEN LINER ASSEMBLY

Description	Depth	Elev.	Length
	From - To	/ From - To	
K-packer	319'	6622'	
Screen	324' - 364'	6617' - 6577'	30'

SCREEN SPECIFICATIONS:

Slot: 0.020" Composition 3" PVC

FILTER PACKING:

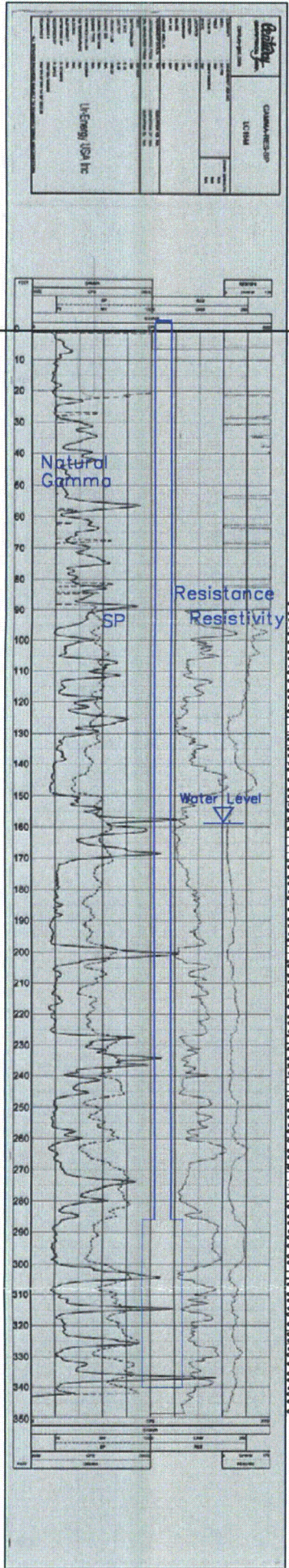
Volume: \_\_\_\_\_ (bags)(ft<sup>3</sup>) Sand Specs. \_\_\_\_\_

Method: N/A

WELL STIMULATION: Method Airlift

Yield: Good / Moderate / Poor





LC15M

Ground Level		
0		
10		
20		
30		
40		
50		
60		
70		
80		
90		
100		
110	SANDSTONE	BC
120	MUDSTONE	
130	SANDSTONE, shaley	
140	SANDSTONE	
150	SANDSTONE, shaley	
160	MUDSTONE	DE
170		
180	SANDSTONE	
190		
200	MUDSTONE	EF
210	SANDSTONE	
220		
230	MUDSTONE	
240	SANDSTONE, v. shaley	
250	MUDSTONE	
260	SANDSTONE	
270		
280	MUDSTONE, sandy	
290	SANDSTONE	
300		
310	MUDSTONE	
320		
330	SANDSTONE, shaley	
340		
350		
		FG
		LCS I

Vertical Scale: 1"=50'

Lost Creek ISR, LLC  
WELL COMPLETION REPORT

WELL # LC15M SEO # 175260 Date Drilled: 8-14-06

Location: E 744,532 / N 534,820 (NAD 27)

Ground Elev: 6935.13 Measure Point Elev: 6936.55

TD: 350 ft. Hole Dia.: 7-7/8"

CASED to: 286' Casing: PVC SDR17 ID: 4.5" OD: 5"

GROUT: Portland Cement - Type I/II  
 Pumped thru casing, displaced to surface with water

COMPLETION Aquifer: LFG Sand

Static Water Level: Depth 158' Elev: 6779' (avg.)

UNDERREAM: Blade Dia: 10-1/2"

Intervals: from 286' to 340' / length 54'  
 from \_\_\_\_\_ to \_\_\_\_\_ / length \_\_\_\_\_

OPEN-HOLE COMPLETION

Description	Depth		Elev.		Length
	From	To	From	To	
K-packer	N/A				
Open-hole	286'	340'	6650'	6596'	54'

SCREEN SPECIFICATIONS:

Slot: \_\_\_\_\_ Composition N/A

FILTER PACKING:

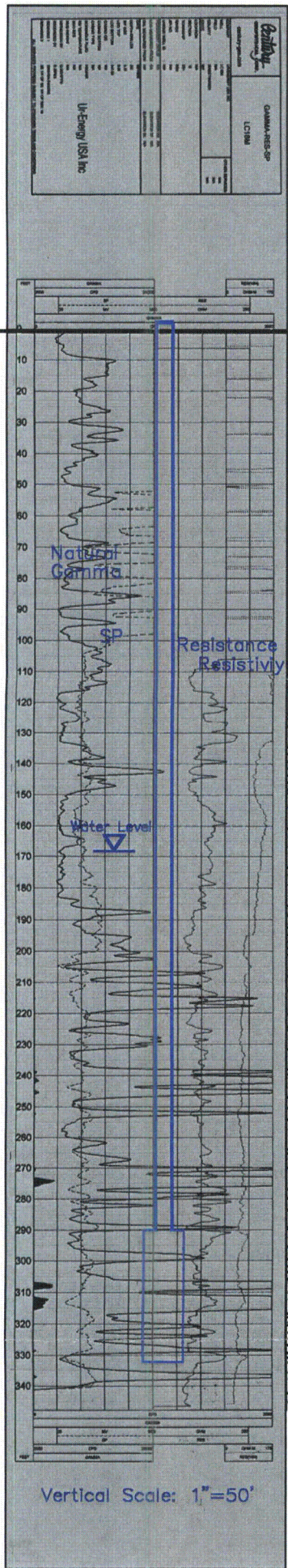
Volume: \_\_\_\_\_ (bags)(ft<sup>3</sup>) Sand Specs. \_\_\_\_\_

Method: N/A

WELL STIMULATION: Method Airlift

Yield: Good / Moderate / Poor





LC18M

Ground Level		
No lithology data		BC
MUDSTONE		DE
SANDSTONE		
MUDSTONE		
SANDSTONE		
MUDSTONE		EF
SANDSTONE, shaley		FG
MUDSTONE, v. sandy		
SANDSTONE		
		LCS

Lost Creek ISR, LLC  
WELL COMPLETION REPORT

WELL # LC18M SEO # 175261 Date Drilled: 8-14-06

Location: E 743,368 / N 535,316 (NAD 27)

Ground Elev: 6948.43' Measure Point Elev: 6949.03'

TD: 350' Hole Dia.: 7-7/8"

CASED to: 290' Casing: PVC SDR17 ID: 4.5" OD: 5"

GROUT: Portland Cement - Type I/II  
 Pumped thru casing, displaced to surface with water

COMPLETION Aquifer: LFG Sand

Static Water Level: Depth 168' Elev: 6781' (avg.)

UNDERREAM: Blade Dia: 10.5"  
 Intervals: from 290' to 332' / length 42'  
 from \_\_\_\_\_ to \_\_\_\_\_ / length \_\_\_\_\_

OPEN-HOLE COMPLETION

Description	Depth		Elev.		Length
	From	To	From	To	
K-packer	N/A				
Open-hole	290'	332'	6659'	6617'	42'

SCREEN SPECIFICATIONS:

Slot: \_\_\_\_\_ Composition N/A

FILTER PACKING:

Volume: \_\_\_\_\_ (bags)(ft<sup>3</sup>) Sand Specs. \_\_\_\_\_

Method: N/A

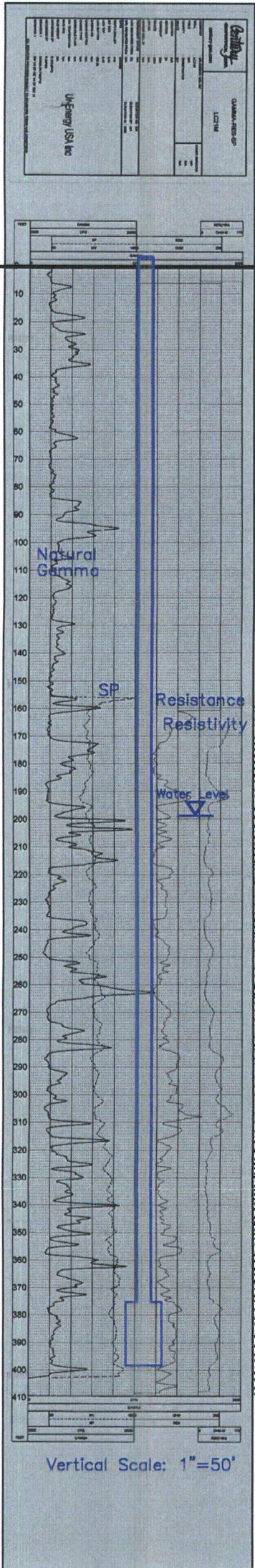
WELL STIMULATION: Method Airlift

Yield: Good / Moderate / Poor



LC21M

Lost Creek ISR, LLC  
WELL COMPLETION REPORT



Ground Level

WELL # LC21M    SEO # 175262    Date Drilled: 8-30-06

Location: E 736,277 / N 532,850 (NAD 27)

Ground Elev: 6925.00'    Measure Point Elev: 6927.13

TD: 410 ft.    Hole Dia.: 7-7/8"

CASED to: 375'    Casing: PVC SDR17 ID: 4.5" OD: 5"

GROUT: Portland Cement - Type I/II  
 Pumped thru casing, displaced to surface with water

COMPLETION Aquifer:    LFG Sand

Static Water Level: Depth 199'    Elev: 6728' (avg.)

UNDERREAM:    Blade Dia: 10-1/2"  
 Intervals: from 375' to 398' / length 23'  
 from \_\_\_\_\_ to \_\_\_\_\_ / length \_\_\_\_\_

OPEN-HOLE COMPLETION

Description	Depth		Elev.		Length
	From	To	From	To	
K-packer	N/A				
Open-hole	375'	398'	6353'	6330'	23'

SCREEN SPECIFICATIONS:

Slot: \_\_\_\_\_    Composition N/A

FILTER PACKING:

Volume: \_\_\_\_\_ (bags)(ft<sup>3</sup>)    Sand Specs. \_\_\_\_\_  
 Method: N/A

WELL STIMULATION: Method N/A

Yield: Good / Moderate / Poor

BC

No lithology data

DE

SANDSTONE  
 MUDSTONE  
 SANDSTONE  
 SANDSTONE, shaley  
 MUDSTONE  
 SANDSTONE  
 MUDSTONE, sandy

EF

SANDSTONE  
 MUDSTONE

FG

SANDSTONE  
 SANDSTONE, v. shaley  
 MUDSTONE  
 SANDSTONE, shaley  
 SANDSTONE

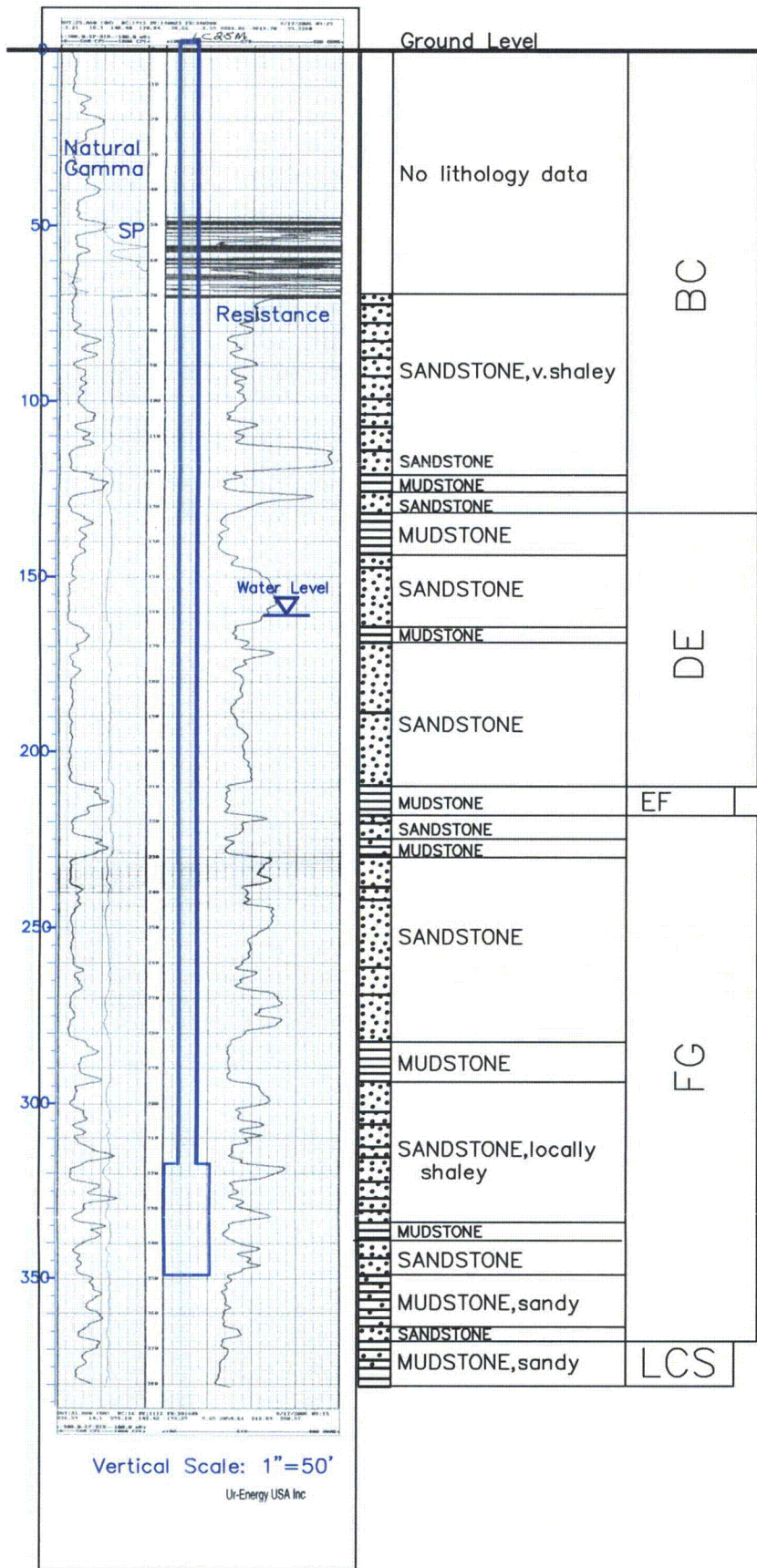
LCS

Vertical Scale: 1"=50'



LC25M

Lost Creek ISR, LLC  
WELL COMPLETION REPORT



WELL # LC25M SEO # 175264 Date Drilled: 9-19-06

Location: E 743,397 / N 534,601 (NAD 27)

Ground Elev: 6935.00 Measure Point Elev: 6936.52

TD: 380 ft. Hole Dia.: 7-7/8"

CASED to: 316' Casing: PVC SDR17 ID: 4.5" OD: 5"

GROUT: Portland Cement - Type I/II  
 Pumped thru casing, displaced to surface with water

COMPLETION Aquifer: LFG Sand

Static Water Level: Depth 161' Elev: 6775' (avg.)

UNDERREAM: Blade Dia: 10-1/2"

Intervals: from 316' to 349' / length 33'

from \_\_\_\_\_ to \_\_\_\_\_ / length \_\_\_\_\_

OPEN-HOLE COMPLETION

Description	Depth		Elev.		Length
	From	To	From	To	
K-packer	N/A				
Open-hole	316'	349'	6620'	6587'	33'

SCREEN SPECIFICATIONS:

Slot: \_\_\_\_\_ Composition N/A

FILTER PACKING:

Volume: \_\_\_\_\_ (bags)(ft<sup>3</sup>) Sand Specs. \_\_\_\_\_

Method: N/A

WELL STIMULATION: Method N/A

Yield: Good / Moderate / Poor



UN ENERGY	
MB-02	10/7/08
NAT GAMMA-RAYS M-1.2-13E-17 10/7/08	
LOG NUMBER: 134	LOG DATE: 10/7/08
WELL NAME: MB-02	WELL TYPE: C
WELL DEPTH: 460'	WELL DIA: 7-7/8"
WELL STATUS: COMPLETED	WELL OWNER: LOST CREEK ISR, LLC

MB-02

Lost Creek ISR, LLC  
WELL COMPLETION REPORT

WELL # MB-02 SEO # 188853 Date Drilled: 10-7-08

Location: E 736,298 / N 535,858 (NAD 27)

Ground Elev: 6985.42' Measure Point Elev: 6986.92'

TD: 460' Hole Dia.: 7-7/8"

CASED to: 410' Casing: PVC SDR17 ID: 4.5" OD: 5"

GROUT: Portland Cement - Type I/II  
 Pumped thru casing, displaced to surface with water

COMPLETION Aquifer: LFG Sand

Static Water Level: Depth 242' Elev: 6745' (avg.)

UNDERREAM: Blade Dia: 10.5"

Intervals: from 410' to 450' / length 40'  
 from \_\_\_\_\_ to \_\_\_\_\_ / length \_\_\_\_\_

SCREEN LINER ASSEMBLY

Description	Depth		Elev.		Length
	From - To	/ From - To	From - To	/ From - To	
K-packer	403'		6584'		
Screen	410'	450'	6577'	6537'	40'

SCREEN SPECIFICATIONS:

Slot: 0.020" Composition 3" PVC

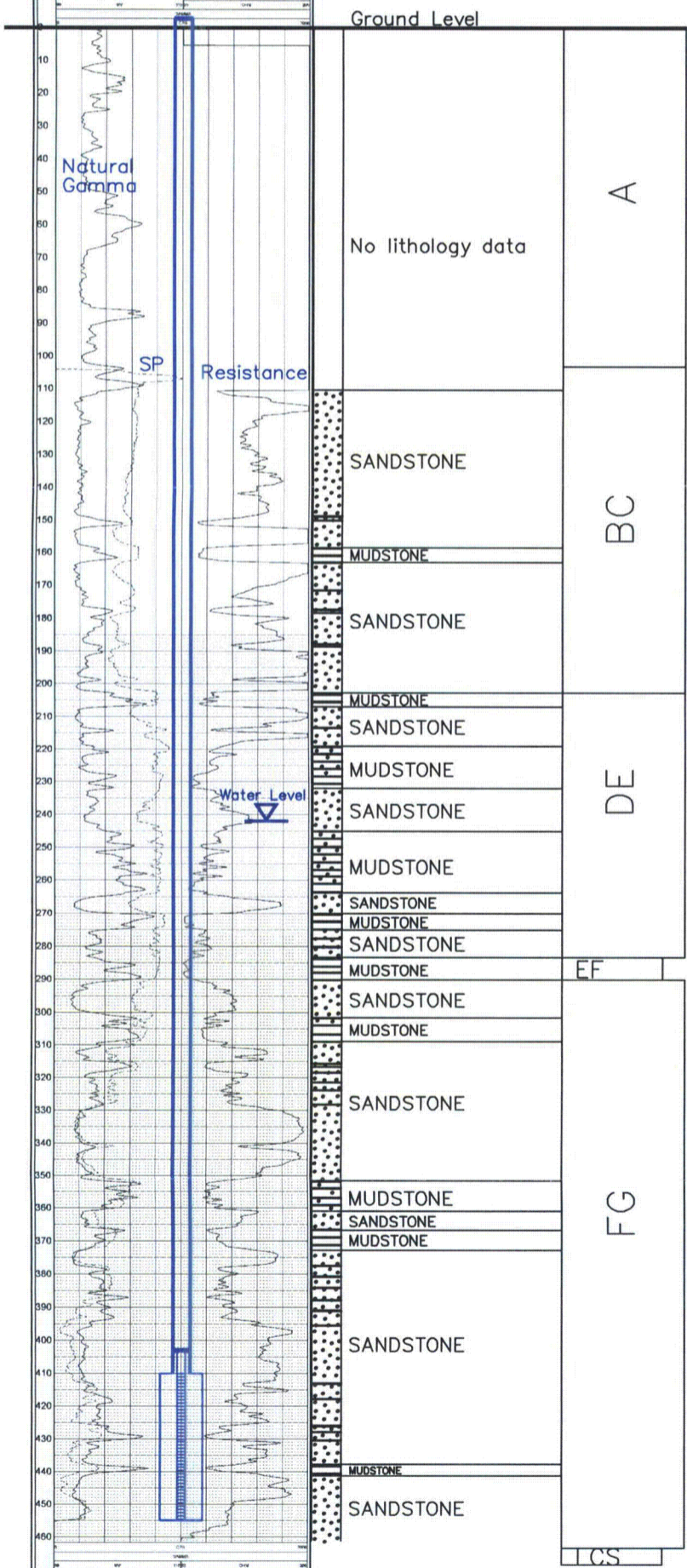
FILTER PACKING:

Volume: \_\_\_\_\_ (bags)(ft<sup>3</sup>) Sand Specs. \_\_\_\_\_

Method: N/A

WELL STIMULATION: Method Airlift

Yield Good / Moderate / Poor



Vertical Scale: 1"=50'



MB-05

Lost Creek ISR, LLC  
WELL COMPLETION REPORT

WELL # MB-05 SEO # 188856 Date Drilled: 10-9-08

Location: E 733,337 / N 524,466 (NAD 27)

Ground Elev: 6803.54 Measure Point Elev: 6805.04

TD: 330 ft. Hole Dia.: 7-7/8"

CASED to: 305' Casing: PVC SDR17 ID: 4.5" OD: 5"

GROUT: Portland Cement - Type I/II  
 Pumped thru casing, displaced to surface with water

COMPLETION Aquifer: LFG Sand

Static Water Level: Depth 142' Elev: 6663' (avg.)

UNDERREAM: Blade Dia: 10-1/2"

Intervals: from 305' to 325' / length 20'  
 from \_\_\_\_\_ to \_\_\_\_\_ / length \_\_\_\_\_

SCREEN LINER ASSEMBLY

Description	Depth		Elev.		Length
	From - To		From - To		
<u>K-packer</u>	<u>298'</u>		<u>6507'</u>		
<u>Screen</u>	<u>305'</u>	<u>325'</u>	<u>6500'</u>	<u>6480'</u>	<u>20'</u>

SCREEN SPECIFICATIONS:

Slot: 0.020" Composition 3" PVC

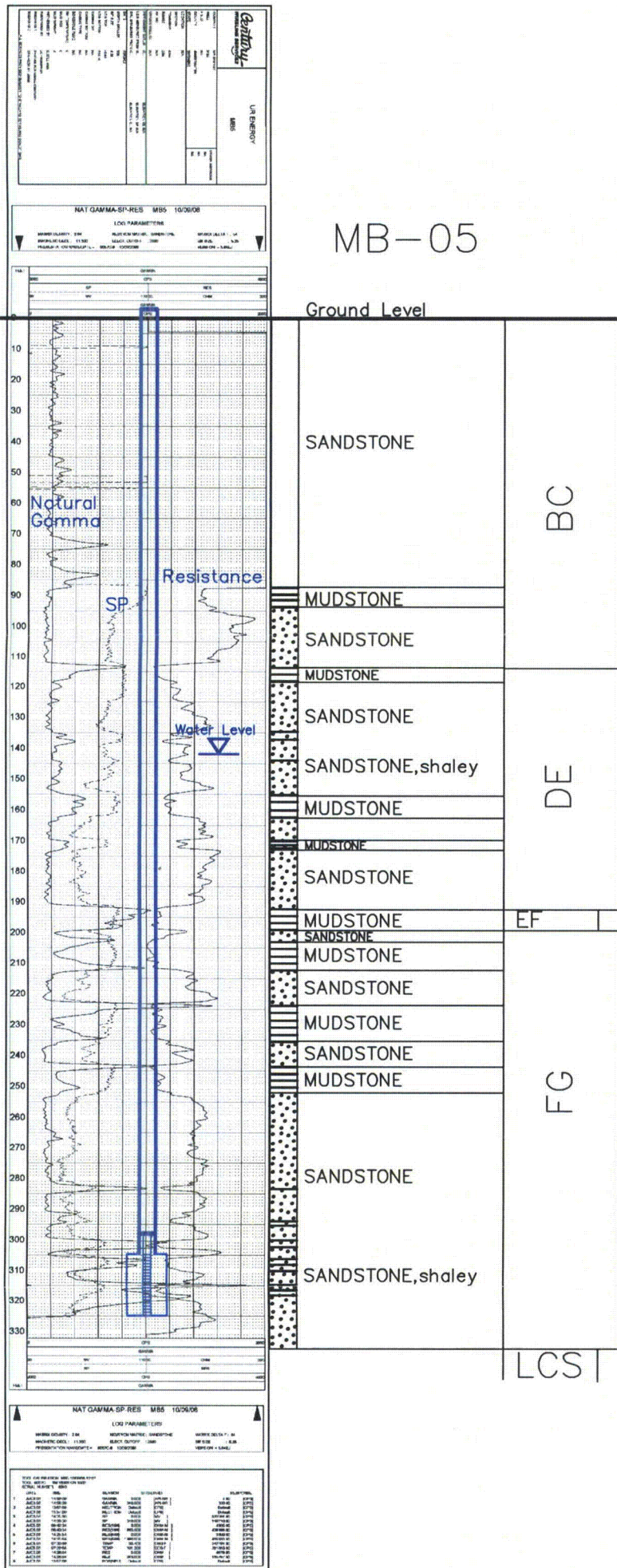
FILTER PACKING:

Volume: \_\_\_\_\_ (bags)(ft<sup>3</sup>) Sand Specs. \_\_\_\_\_

Method: N/A

WELL STIMULATION: Method Airlift

Yield: Good / Moderate / Poor



Vertical Scale: 1"=50'



MB-08

Lost Creek ISR, LLC  
WELL COMPLETION REPORT

WELL # MB-08 SEO # 188859 Date Drilled: 10-17-08

Location: E 753,316 / N 538,987 (NAD 27)

Ground Elev: 6984.00' Measure Point Elev: 6985.50'

TD: 280' Hole Dia.: 7-7/8"

CASED to: 230' Casing: PVC SDR17 ID: 4.5" OD: 5"

GROUT: Portland Cement - Type I/II  
 Pumped thru casing, displaced to surface with water

COMPLETION Aquifer: LFG Sand

Static Water Level: Depth 167' Elev: 6819' (avg.)

UNDERREAM: Blade Dia: 10.5"

Intervals: from 230' to 260' / length 30'

from \_\_\_\_\_ to \_\_\_\_\_ / length \_\_\_\_\_

SCREEN LINER ASSEMBLY

Description	Depth		Elev.		Length
	From	To	From	To	
K-packer		<u>223'</u>		<u>6763'</u>	
Screen	<u>230'</u>	<u>260'</u>	<u>6756'</u>	<u>6726'</u>	<u>30'</u>

SCREEN SPECIFICATIONS:

Slot: 0.020" Composition 3" PVC

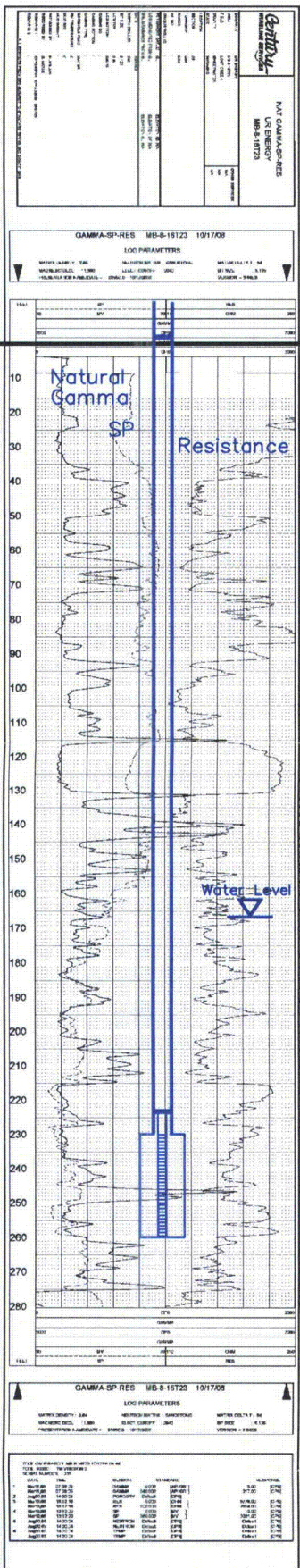
FILTER PACKING:

Volume: \_\_\_\_\_ (bags)(ft<sup>3</sup>) Sand Specs. \_\_\_\_\_

Method: N/A

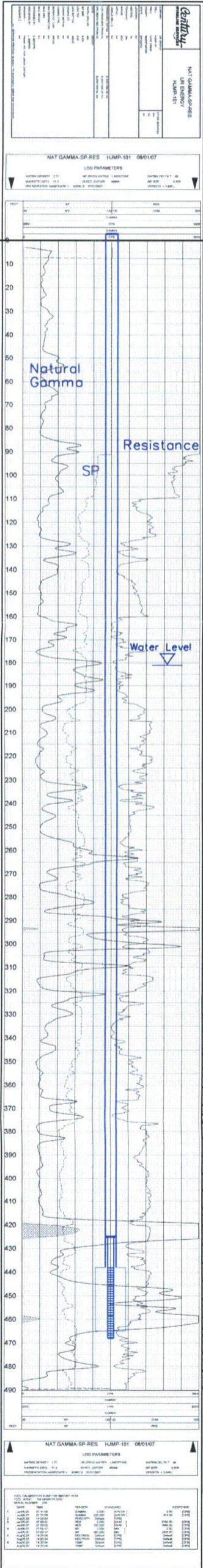
WELL STIMULATION: Method Airlift

Yield: Good / Moderate / Poor



Vertical Scale: 1"=50'





HJMP-101

Lost Creek ISR, LLC  
WELL COMPLETION REPORT

WELL # HJMP-101 SEO # 179864 Date Drilled: 8-01-07

Location: E 743,287 / N 534,998 (NAD 27)

Ground Elev: 6903.70 Measure Point Elev: 6904.58

TD: 490 ft. Hole Dia.: 7-7/8"

CASED to: 438' Casing: PVC SDR17 ID: 4.5" OD: 5"

GROUT: Portland Cement - Type I/II  
 Pumped thru casing, displaced to surface with water

COMPLETION Aquifer: HJ Sand

Static Water Level: Depth 181' Elev: 6723' (Typically)

UNDERREAM: Blade Dia: 10-1/2"

Intervals: from 438' to 465' / length 27'  
 from \_\_\_\_\_ to \_\_\_\_\_ / length \_\_\_\_\_

SCREEN LINER ASSEMBLY

Description	Depth		Elev.		Length
	From - To	/ From - To	From - To	/ From - To	
K-packer	425'		6479'		
Screen	438'	468'	6466'	6436'	30'

SCREEN SPECIFICATIONS:

Slot: 0.020" Composition 3" PVC

FILTER PACKING:

Volume: \_\_\_\_\_ (bags)(ft<sup>3</sup>) Sand Specs. \_\_\_\_\_  
 Method: N/A

WELL STIMULATION: Method Airlift

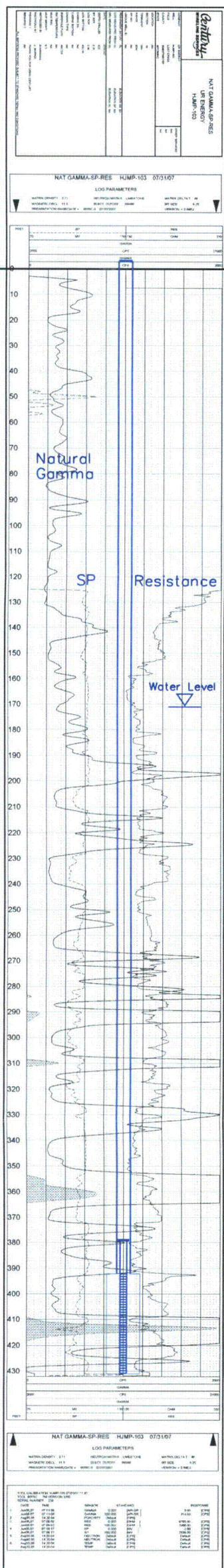
Yield: Good / Moderate / Poor

Vertical Scale: 1"=50'









HJMP-103  
(MP-107)

Ground Level

0 - 130	No Lithology Data	BC
130 - 170	SANDSTONE	DE
170 - 171	MUDSTONE	
171 - 180	SANDSTONE, shaley	EF
180 - 190	SANDSTONE	
190 - 220	MUDSTONE, sandy	
220 - 230	SANDSTONE	
230 - 240	MUDSTONE	FG
240 - 250	SANDSTONE	
250 - 260	MUDSTONE	
260 - 270	SANDSTONE	
270 - 280	MUDSTONE	LCS
280 - 290	SANDSTONE	
290 - 300	MUDSTONE, sandy	
300 - 310	MUDSTONE	
310 - 320	SANDSTONE	HJ
320 - 330	MUDSTONE, sandy	
330 - 340	MUDSTONE	
340 - 350	SANDSTONE	
350 - 360	SANDSTONE, shaley	HJ
360 - 370	MUDSTONE	
370 - 380	SANDSTONE	
380 - 390	MUDSTONE	
390 - 400	SANDSTONE	HJ
400 - 410	MUDSTONE	
410 - 420	SANDSTONE	
420 - 430	MUDSTONE	HJ

Lost Creek ISR, LLC  
WELL COMPLETION REPORT

WELL # HJMP-103 SEO # 179870 Date Drilled: 7-31-07

Location: E 742,652 / N 535,109 (NAD 27)

Ground Elev: 6935.08 Measure Point Elev: 6936.49

TD: 432 ft. Hole Dia.: 7-7/8"

CASED to: 392' Casing: PVC SDR17 ID: 4.5" OD: 5"

GROUT: Portland Cement - Type I/II  
Pumped thru casing, displaced to surface with water

COMPLETION Aquifer: HJ Sand

Static Water Level: Depth 171' Elev: 6766' (avg.)

UNDERREAM: Blade Dia: 10-1/2"

Intervals: from 392' to 432' / length 38'  
from \_\_\_\_\_ to \_\_\_\_\_ / length \_\_\_\_\_

SCREEN LINER ASSEMBLY

Description	Depth	Elev.	Length
	From - To	/ From - To	
K-packer	379'	6557'	
Screen	392' - 432'	6544' - 6504'	40'

SCREEN SPECIFICATIONS:

Slot: 0.020" Composition 3" PVC

FILTER PACKING:

Volume: \_\_\_\_\_ (bags)(ft<sup>3</sup>) Sand Specs. \_\_\_\_\_

Method: N/A

WELL STIMULATION: Method Airlift

Yield: Good / Moderate / Poor



HJMP-104

Lost Creek ISR, LLC  
WELL COMPLETION REPORT

WELL # HJMP-104 SEO # 179873 Date Drilled: 7-6-07

Location: E 742,886 / N 534,897 (NAD 27)

Ground Elev: 6939.04' Measure Point Elev: 6941.04'

TD: 432' Hole Dia.: 7-7/8"

CASED to: 402' Casing: PVC SDR17 ID: 4.5" OD: 5"

GROUT: Portland Cement - Type I/II  
Pumped thru casing, displaced to surface with water

COMPLETION Aquifer: HJ Sand

Static Water Level: Depth 175' Elev: 6766' (avg.)

UNDERREAM: Blade Dia: 10.5"

Intervals: from 402' to 430' / length 25'

from \_\_\_\_\_ to \_\_\_\_\_ / length \_\_\_\_\_

SCREEN LINER ASSEMBLY

Description	Depth		Elev.		Length
	From	To	From	To	
K-packer	396'		6545'		
Screen	402'	432'	6539'	6509'	30'

SCREEN SPECIFICATIONS:

Slot: 0.020" Composition 3" PVC

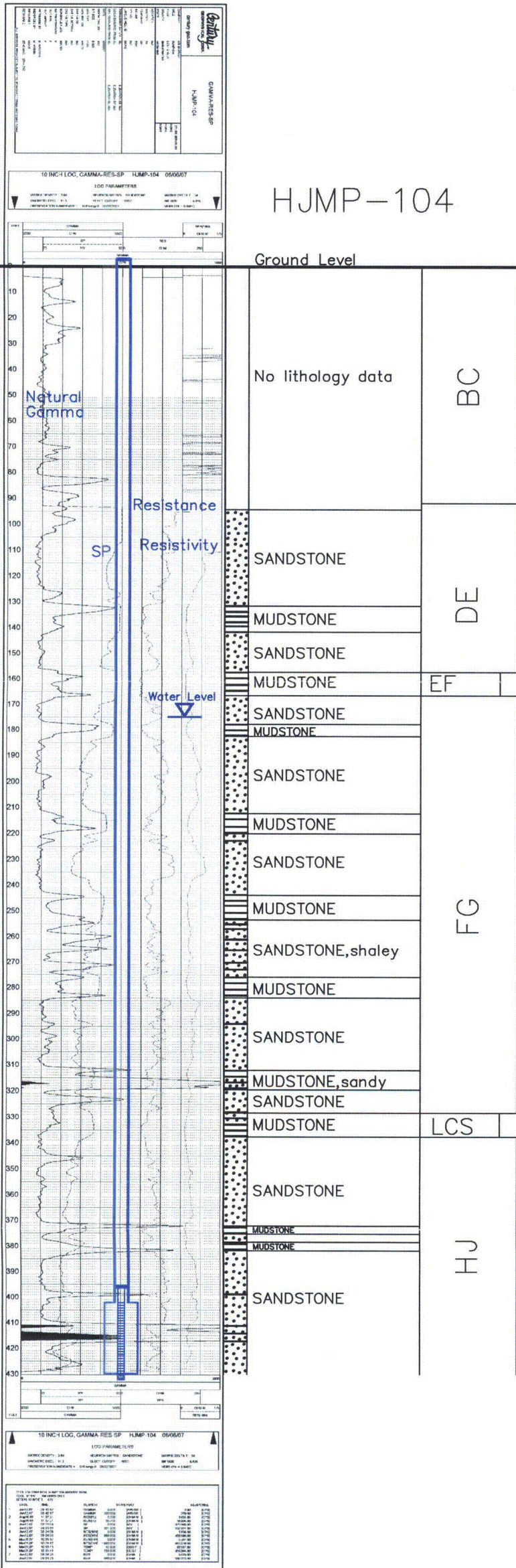
FILTER PACKING:

Volume: \_\_\_\_\_ (bags)(ft<sup>3</sup>) Sand Specs. \_\_\_\_\_

Method: N/A

WELL STIMULATION: Method Airlift

Yield: Good / Moderate / Poor





Lost Creek ISR, LLC  
WELL COMPLETION REPORT

HJMP-105

WELL # HJMP-105 SEO # 179876 Date Drilled: 9-5-07

Location: E 742,933 / N 535,073 (NAD 27)

Ground Elev: 6936.84 Measure Point Elev: 6937.38

TD: 460 ft. Hole Dia.: 7-7/8"

CASED to: 425' Casing: PVC SDR17 ID: 4.5" OD: 5"

GROUT: Portland Cement - Type I/II  
 Pumped thru casing, displaced to surface with water

COMPLETION Aquifer: HJ Sand

Static Water Level: Depth 171' Elev: 6767' (avg.)

UNDERREAM: Blade Dia: 10-1/2"

Intervals: from 435' to 463' / length 28'  
 from \_\_\_\_\_ to \_\_\_\_\_ / length \_\_\_\_\_

SCREEN LINER ASSEMBLY

Description	Depth		Elev.		Length
	From	To	From	To	
K-packer	410'		6521'		
Screen	425'	465'	6512'	6472'	40'

SCREEN SPECIFICATIONS:

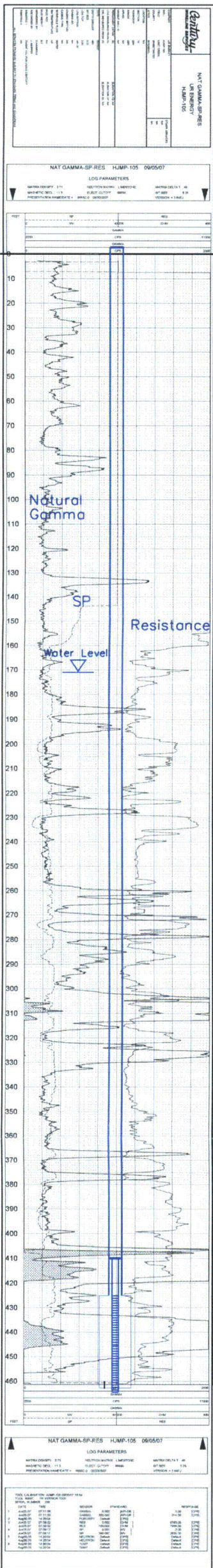
Slot: 0.020" Composition 3" PVC

FILTER PACKING:

Volume: \_\_\_\_\_ (bags)(ft<sup>3</sup>) Sand Specs. \_\_\_\_\_  
 Method: N/A

WELL STIMULATION: Method Airlift

Yield: Good / Moderate / Poor



Depth (ft)	Lithology	Section
0 - 160	No lithology data	BC
160 - 171	SANDSTONE, shaley	EF
171 - 180	SANDSTONE, shaley	
180 - 190	MUDSTONE, v. sandy	FG
190 - 200	SANDSTONE	
200 - 210	MUDSTONE, sandy	
210 - 220	SANDSTONE	
220 - 230	MUDSTONE	
230 - 240	SANDSTONE, v. shaley	
240 - 250	SANDSTONE	
250 - 260	MUDSTONE	
260 - 270	SANDSTONE	
270 - 280	MUDSTONE	
280 - 290	SANDSTONE	LCS
290 - 300	MUDSTONE	
300 - 310	SANDSTONE	HJ
310 - 320	MUDSTONE	
320 - 330	SANDSTONE	
330 - 340	MUDSTONE	
340 - 350	SANDSTONE	
350 - 360	MUDSTONE	
360 - 370	SANDSTONE	
370 - 380	MUDSTONE	
380 - 390	SANDSTONE	
390 - 400	MUDSTONE, sandy	
400 - 410	SANDSTONE	
410 - 420	MUDSTONE, sandy	
420 - 430	SANDSTONE	
430 - 440	MUDSTONE	
440 - 450	SANDSTONE	
450 - 460	SANDSTONE, shaley	

Vertical Scale: 1"=50'



NAT GAMMA-RAYS	
LOG PARAMETERS	LOG PARAMETERS
LOG NUMBER: 100	LOG NUMBER: 100
LOG DATE: 08/09/07	LOG DATE: 08/09/07
LOG TIME: 10:00	LOG TIME: 10:00
LOG USER: J. L. BROWN	LOG USER: J. L. BROWN
LOG TITLE: HJMP-106	LOG TITLE: HJMP-106
LOG WELL: HJMP-106	LOG WELL: HJMP-106
LOG LOCATION: E 743,166 / N 535,267	LOG LOCATION: E 743,166 / N 535,267
LOG DEPTH: 480'	LOG DEPTH: 480'
LOG DIAMETER: 7-7/8"	LOG DIAMETER: 7-7/8"
LOG CASING: PVC SDR17	LOG CASING: PVC SDR17
LOG ID: 4.5"	LOG ID: 4.5"
LOG OD: 5"	LOG OD: 5"
LOG GROUT: Portland Cement - Type I/II	LOG GROUT: Portland Cement - Type I/II
LOG PUMPED THRU CASING: Displaced to surface with water	LOG PUMPED THRU CASING: Displaced to surface with water
LOG COMPLETION: Aquifer: HJ Sand	LOG COMPLETION: Aquifer: HJ Sand
LOG STATIC WATER LEVEL: Depth 173' Elev. 6768' (avg.)	LOG STATIC WATER LEVEL: Depth 173' Elev. 6768' (avg.)
LOG UNDERREAM: Blade Dia: 10.5"	LOG UNDERREAM: Blade Dia: 10.5"
LOG INTERVALS: from 430' to 480' / length 50'	LOG INTERVALS: from 430' to 480' / length 50'
LOG SCREEN LINER ASSEMBLY	LOG SCREEN LINER ASSEMBLY
LOG DESCRIPTION	LOG DESCRIPTION
LOG DEPTH	LOG DEPTH
LOG ELEV.	LOG ELEV.
LOG LENGTH	LOG LENGTH
LOG K-PACKER	LOG K-PACKER
LOG SCREEN	LOG SCREEN
LOG SCREEN SPECIFICATIONS	LOG SCREEN SPECIFICATIONS
LOG SLOT: 0.020"	LOG SLOT: 0.020"
LOG COMPOSITION: 3" PVC	LOG COMPOSITION: 3" PVC
LOG FILTER PACKING	LOG FILTER PACKING
LOG VOLUME: (bags)(ft <sup>3</sup> )	LOG VOLUME: (bags)(ft <sup>3</sup> )
LOG SAND SPECS.	LOG SAND SPECS.
LOG METHOD: N/A	LOG METHOD: N/A
LOG WELL STIMULATION	LOG WELL STIMULATION
LOG METHOD: Airlift	LOG METHOD: Airlift
LOG YIELD: Good / Moderate / Poor	LOG YIELD: Good / Moderate / Poor

HJMP-106  
(MP-106)

Lost Creek ISR, LLC  
WELL COMPLETION REPORT

WELL # HJMP-106 SEO # 179879 Date Drilled: 8-9-07

Location: E 743,166 / N 535,267 (NAD 27)

Ground Elev: 6940.20' Measure Point Elev: 6941.29'

TD: 480' Hole Dia.: 7-7/8"

CASED to: 430' Casing: PVC SDR17 ID: 4.5" OD: 5"

GROUT: Portland Cement - Type I/II  
Pumped thru casing, displaced to surface with water

COMPLETION Aquifer: HJ Sand

Static Water Level: Depth 173' Elev: 6768' (avg.)

UNDERREAM: Blade Dia: 10.5"  
Intervals: from 430' to 480' / length 50'  
from \_\_\_\_\_ to \_\_\_\_\_ / length \_\_\_\_\_

SCREEN LINER ASSEMBLY

Description	Depth		Elev.		Length
	From	To	From	To	
K-packer	417'		6524'		
Screen	430'	480'	6511'	6461'	50'

SCREEN SPECIFICATIONS:

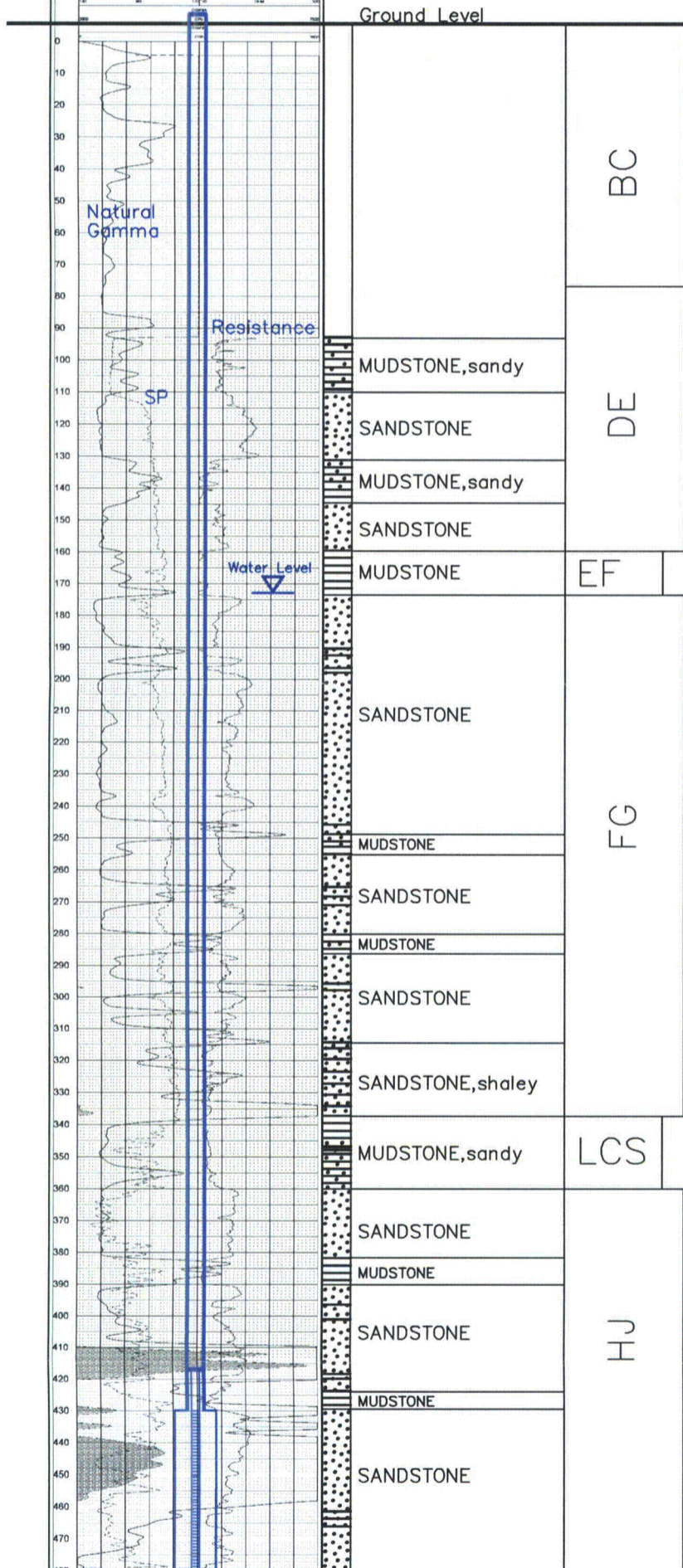
Slot: 0.020" Composition 3" PVC

FILTER PACKING:

Volume: \_\_\_\_\_ (bags)(ft<sup>3</sup>) Sand Specs. \_\_\_\_\_  
Method: N/A

WELL STIMULATION: Method Airlift

Yield: Good / Moderate / Poor



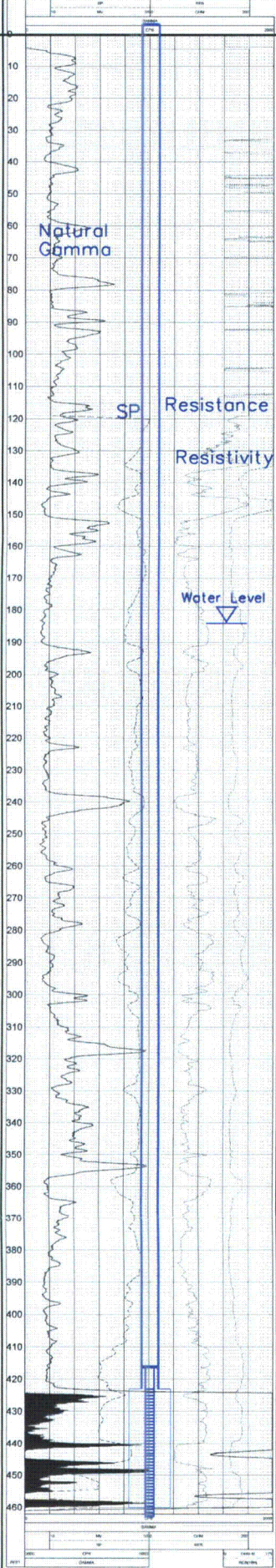
NAT GAMMA-RAYS	
LOG PARAMETERS	LOG PARAMETERS
LOG NUMBER: 100	LOG NUMBER: 100
LOG DATE: 08/09/07	LOG DATE: 08/09/07
LOG TIME: 10:00	LOG TIME: 10:00
LOG USER: J. L. BROWN	LOG USER: J. L. BROWN
LOG TITLE: HJMP-106	LOG TITLE: HJMP-106
LOG WELL: HJMP-106	LOG WELL: HJMP-106
LOG LOCATION: E 743,166 / N 535,267	LOG LOCATION: E 743,166 / N 535,267
LOG DEPTH: 480'	LOG DEPTH: 480'
LOG DIAMETER: 7-7/8"	LOG DIAMETER: 7-7/8"
LOG CASING: PVC SDR17	LOG CASING: PVC SDR17
LOG ID: 4.5"	LOG ID: 4.5"
LOG OD: 5"	LOG OD: 5"
LOG GROUT: Portland Cement - Type I/II	LOG GROUT: Portland Cement - Type I/II
LOG PUMPED THRU CASING: Displaced to surface with water	LOG PUMPED THRU CASING: Displaced to surface with water
LOG COMPLETION: Aquifer: HJ Sand	LOG COMPLETION: Aquifer: HJ Sand
LOG STATIC WATER LEVEL: Depth 173' Elev. 6768' (avg.)	LOG STATIC WATER LEVEL: Depth 173' Elev. 6768' (avg.)
LOG UNDERREAM: Blade Dia: 10.5"	LOG UNDERREAM: Blade Dia: 10.5"
LOG INTERVALS: from 430' to 480' / length 50'	LOG INTERVALS: from 430' to 480' / length 50'
LOG SCREEN LINER ASSEMBLY	LOG SCREEN LINER ASSEMBLY
LOG DESCRIPTION	LOG DESCRIPTION
LOG DEPTH	LOG DEPTH
LOG ELEV.	LOG ELEV.
LOG LENGTH	LOG LENGTH
LOG K-PACKER	LOG K-PACKER
LOG SCREEN	LOG SCREEN
LOG SCREEN SPECIFICATIONS	LOG SCREEN SPECIFICATIONS
LOG SLOT: 0.020"	LOG SLOT: 0.020"
LOG COMPOSITION: 3" PVC	LOG COMPOSITION: 3" PVC
LOG FILTER PACKING	LOG FILTER PACKING
LOG VOLUME: (bags)(ft <sup>3</sup> )	LOG VOLUME: (bags)(ft <sup>3</sup> )
LOG SAND SPECS.	LOG SAND SPECS.
LOG METHOD: N/A	LOG METHOD: N/A
LOG WELL STIMULATION	LOG WELL STIMULATION
LOG METHOD: Airlift	LOG METHOD: Airlift
LOG YIELD: Good / Moderate / Poor	LOG YIELD: Good / Moderate / Poor

Vertical Scale: 1"=50'



GAMMA-RS-SP	
HJMP-107	
LOG PARAMETERS	
DATE	TIME
WELL NO.	WELL NAME
LOG NO.	LOG DATE
LOG TIME	LOG BY
LOG CHECKED	LOG APPROVED

10 INCH LOG, GAMMA-RES-SP HJMP-107 080807



LOG PARAMETERS	
DATE	TIME
WELL NO.	WELL NAME
LOG NO.	LOG DATE
LOG TIME	LOG BY
LOG CHECKED	LOG APPROVED

HJMP-107  
(MP-104)

Ground Level	
No lithology data	BC
SANDSTONE	DE
SANDSTONE, v. shaley	
SANDSTONE	
MUDSTONE, sandy	
MUDSTONE	
SANDSTONE	EF
MUDSTONE	
SANDSTONE	FG
MUDSTONE	
SANDSTONE	
MUDSTONE	
SANDSTONE	
MUDSTONE	LCS
MUDSTONE, v. sandy	
MUDSTONE	
SANDSTONE, shaley	HJ
SANDSTONE	
MUDSTONE	
SANDSTONE	

Lost Creek ISR, LLC  
WELL COMPLETION REPORT

WELL # HJMP-107 SEO # 179882 Date Drilled: 6-8-07

Location: E 743,684 / N 534,802 (NAD 27)

Ground Elev: 69369.81 Measure Point Elev: 6938.45

TD: 464 ft. Hole Dia.: 7-7/8"

CASED to: 423' Casing: PVC SDR17 ID: 4.5" OD: 5"

GROUT: Portland Cement - Type I/II  
Pumped thru casing, displaced to surface with water

COMPLETION Aquifer: HJ Sand

Static Water Level: Depth 184' Elev: 6754' (avg.)

UNDERREAM: Blade Dia: 10-1/2"

Intervals: from 423' to 460' / length 37'  
from \_\_\_\_\_ to \_\_\_\_\_ / length \_\_\_\_\_

SCREEN LINER ASSEMBLY

Description	Depth		Elev.		Length
	From - To	/ From - To	From - To	/ From - To	
K-packer	416'		6522'		
Screen	423'	463'	6515'	6475'	37'

SCREEN SPECIFICATIONS:

Slot: 0.020" Composition 3" PVC

FILTER PACKING:

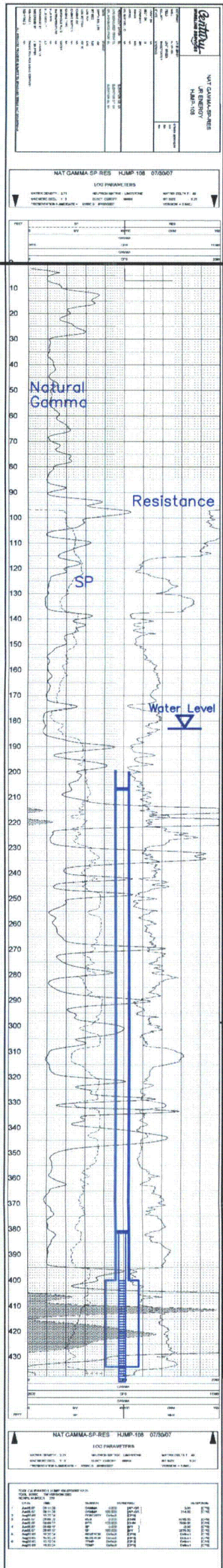
Volume: \_\_\_\_\_ (bags)(ft<sup>3</sup>) Sand Specs. \_\_\_\_\_  
Method: N/A

WELL STIMULATION: Method Airlift

Yield: Good / Moderate / Poor

Vertical Scale: 1"=50'





HJMP-108

Lost Creek ISR, LLC  
WELL COMPLETION REPORT

WELL # HJMP-108 SEO # 179885 Date Drilled: 7-30-07

Location: E 743,466 / N 535,311 (NAD 27)

Ground Elev: 6951.12' Measure Point Elev: 6952.20'

TD: 440' Hole Dia.: 7-7/8"

CASED to: 400' Casing: PVC SDR17 ID: 4.5" OD: 5"

GROUT: Portland Cement - Type I/II  
 Pumped thru casing, displaced to surface with water

COMPLETION Aquifer: HJ Sand

Static Water Level: Depth 183' Elev: 6769' (Avg)

UNDERREAM: Blade Dia: 10.5"

Intervals: from 400' to 434' / length 34'

from \_\_\_\_\_ to \_\_\_\_\_ / length \_\_\_\_\_

SCREEN LINER ASSEMBLY

Description	Depth		Elev.		Length
	From - To	/ From - To	From - To		
K-packer	381'		6571'		
Screen	400'	440'	6552'	6512'	40'

SCREEN SPECIFICATIONS:

Slot: 0.020" Composition 3" PVC

FILTER PACKING:

Volume: \_\_\_\_\_ (bags)(ft<sup>3</sup>) Sand Specs. \_\_\_\_\_

Method: N/A

WELL STIMULATION: Method Airlift

Yield: Good / Moderate / Poor

Vertical Scale: 1"=50'



Company	
HJMP-109	
LOG PARAMETERS	
WATER DEPTH: 2.00	WATER DEPTH: 2.00
WATER DEPTH: 11.3	WATER DEPTH: 11.3
WATER DEPTH: 11.3	WATER DEPTH: 11.3

10 INCH LOG, GAMMA-RES-SP HJMP-109 062107	
LOG PARAMETERS	
WATER DEPTH: 2.00	WATER DEPTH: 2.00
WATER DEPTH: 11.3	WATER DEPTH: 11.3
WATER DEPTH: 11.3	WATER DEPTH: 11.3

HJMP-109

Lost Creek ISR, LLC  
WELL COMPLETION REPORT

WELL # HJMP-109 SEO # 179888 Date Drilled: 6-21-07  
 Location: E 743,895 / N 534,829 (NAD 27)  
 Ground Elev: 6937.89 Measure Point Elev: 6939.10  
 TD: 512 ft. Hole Dia.: 7-7/8"  
 CASED to: 478' Casing: PVC SDR17 ID: 4.5" OD: 5"  
 GROUT: Portland Cement - Type I/II  
 Pumped thru casing, displaced to surface with water  
 COMPLETION Aquifer: HJ Sand  
 Static Water Level: Depth 185' Elev: 6754' (avg.)

UNDERREAM: Blade Dia: 10-1/2"  
 Intervals: from 478' to 512' /length 34'  
 from \_\_\_\_\_ to \_\_\_\_\_ /length \_\_\_\_\_

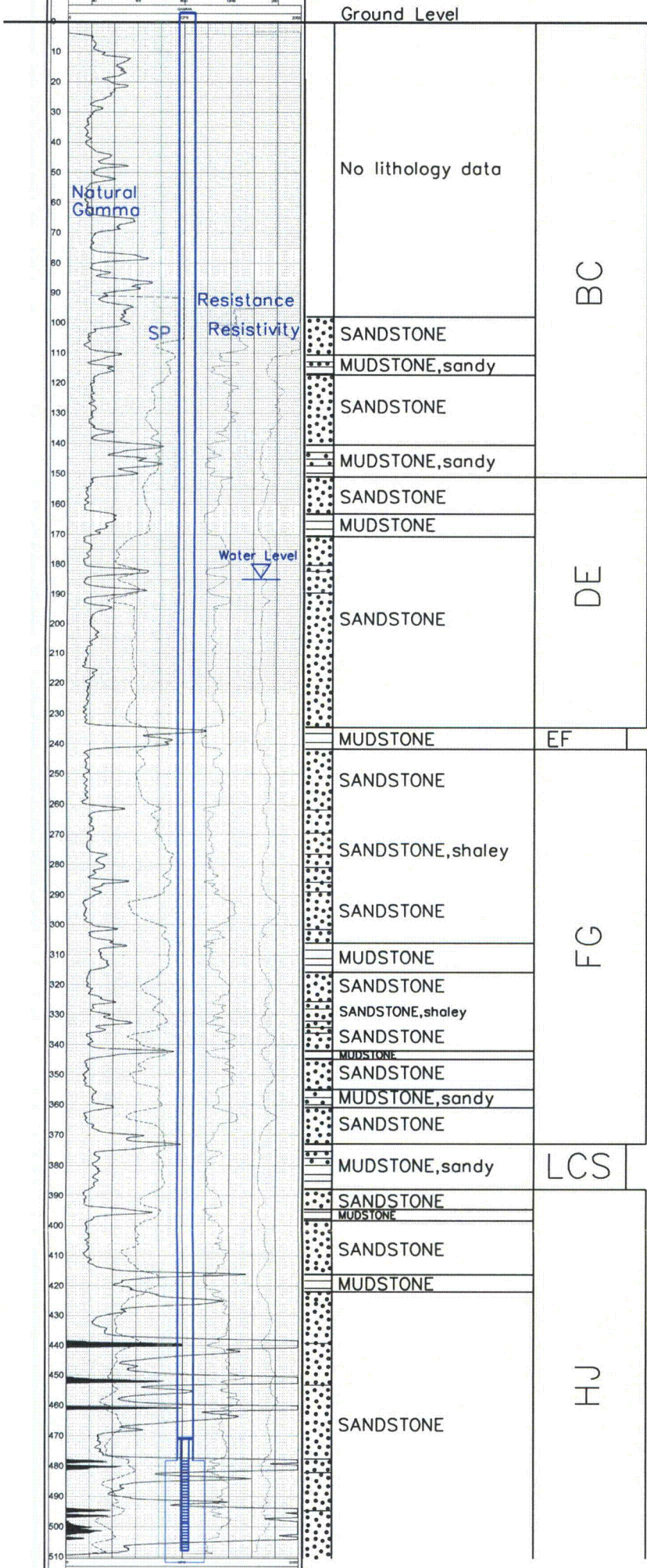
SCREEN LINER ASSEMBLY

Description	Depth	Elev.	Length
	From - To	/ From - To	
K-packer	471'	6468'	
Screen	478' 508'	6461' 6431'	30'

SCREEN SPECIFICATIONS:  
 Slot: 0.020" Composition 3" PVC

FILTER PACKING:  
 Volume: \_\_\_\_\_ (bags)(ft<sup>3</sup>) Sand Specs. \_\_\_\_\_  
 Method: N/A

WELL STIMULATION: Method Airlift  
 Yield: Good / Moderate / Poor



10 INCH LOG, GAMMA-RES-SP HJMP-109 062107	
LOG PARAMETERS	
WATER DEPTH: 2.00	WATER DEPTH: 2.00
WATER DEPTH: 11.3	WATER DEPTH: 11.3
WATER DEPTH: 11.3	WATER DEPTH: 11.3

Vertical Scale: 1"=50'





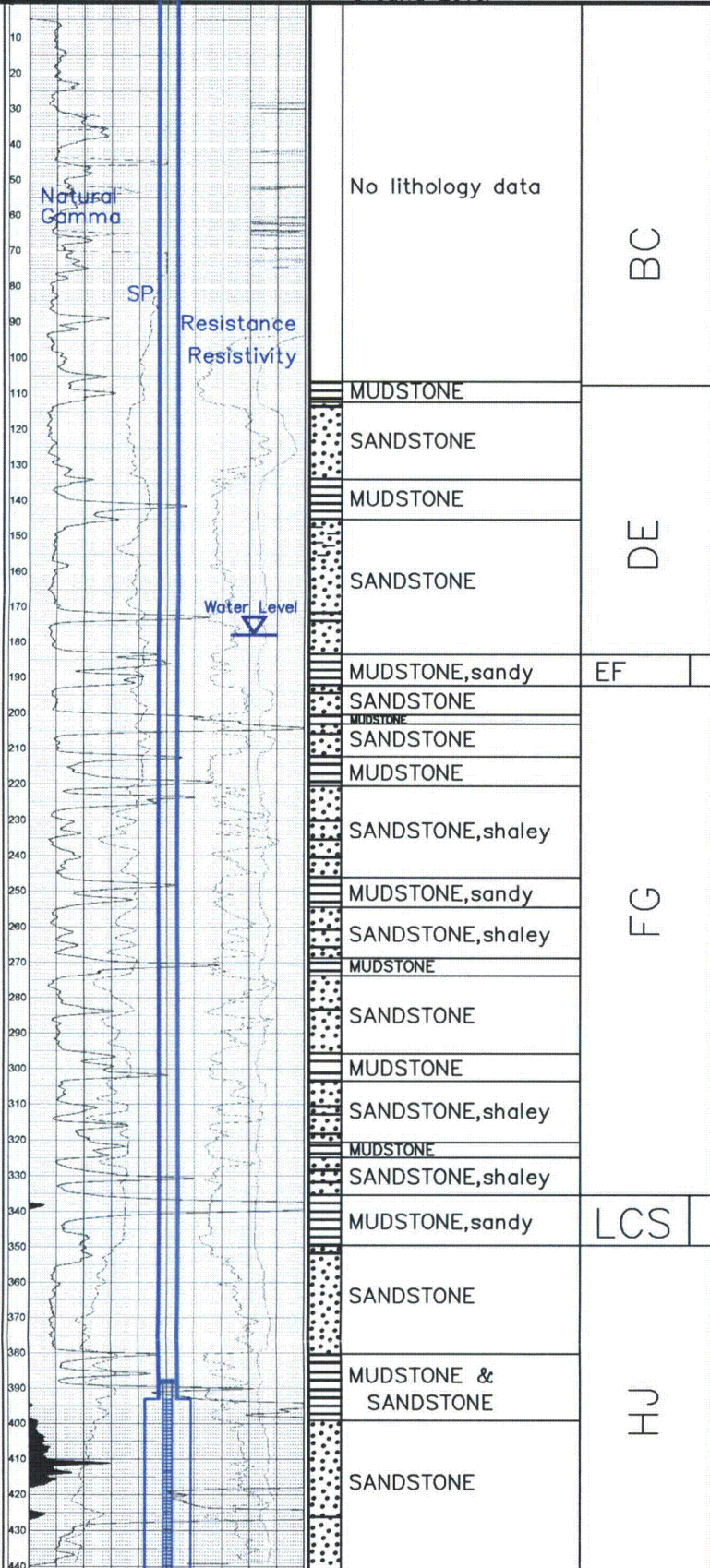


GAMMA-RAY	
WELL NO.	HJMP-111
DATE	5/1/07
LOG NO.	056107
LOG TYPE	LOG
LOG SCALE	1"=50'
LOG INTERVAL	0-440'
LOG START	0'
LOG END	440'
LOG TYPE	LOG
LOG SCALE	1"=50'
LOG INTERVAL	0-440'
LOG START	0'
LOG END	440'

# HJMP-111 (MP-105)

## Lost Creek ISR, LLC WELL COMPLETION REPORT

10 INCH LOG, GAMMA-RES-SP HJMP-111 056107	
WELL NO.	HJMP-111
DATE	5/1/07
LOG NO.	056107
LOG TYPE	LOG
LOG SCALE	1"=50'
LOG INTERVAL	0-440'
LOG START	0'
LOG END	440'



WELL # HJMP-111 SEO # 179894 Date Drilled: 5-1-07

Location: E 743,836 / N 535,365 (NAD 27)

Ground Elev: 6948.99 Measure Point Elev: 6949.49

TD: 440 ft. Hole Dia.: 7-7/8"

CASED to: 393' Casing: PVC SDR17 ID: 4.5" OD: 5"

GROUT: Portland Cement - Type I/II  
Pumped thru casing, displaced to surface with water

COMPLETION Aquifer: HJ Sand

Static Water Level: Depth 178' Elev: 6771' (avg.)

UNDERREAM: Blade Dia: 10-1/2"

Intervals: from 393' to 440' / length 47'  
from \_\_\_\_\_ to \_\_\_\_\_ / length \_\_\_\_\_

### SCREEN LINER ASSEMBLY

Description	Depth		Elev.		Length
	From - To	/ From - To	From - To	/ From - To	
K-packer	388'		6561'		
Screen	393'	440'	6556'	6509'	47'

### SCREEN SPECIFICATIONS:

Slot: 0.020" Composition 3" PVC

### FILTER PACKING:

Volume: \_\_\_\_\_ (bags)(ft<sup>3</sup>) Sand Specs. \_\_\_\_\_  
Method: N/A

WELL STIMULATION: Method Airlift

Yield: Good / Moderate / Poor

10 INCH LOG, GAMMA-RES-SP HJMP-111 056107	
WELL NO.	HJMP-111
DATE	5/1/07
LOG NO.	056107
LOG TYPE	LOG
LOG SCALE	1"=50'
LOG INTERVAL	0-440'
LOG START	0'
LOG END	440'

LOG PARAMETERS	
WELL NO.	HJMP-111
DATE	5/1/07
LOG NO.	056107
LOG TYPE	LOG
LOG SCALE	1"=50'
LOG INTERVAL	0-440'
LOG START	0'
LOG END	440'

Vertical Scale: 1"=50'