

Volume 3a of 5

LOST CREEK ISR, LLC Lost Creek Project

Volume 3a of 5



Application for
WDEQ Permit to Mine

Original Dec07; Rev3 Apr09

Appendix D (D6)
Through Attachment D6-2b

TABLE OF CONTENTS - General

VOLUME 1 of 5: Adjudication Files

Form 1	Application for In Situ Permit to Mine
Form 3	License to Mine Application
Form 8	Surface Owner Consent Form
Appendix A	Surface and Mineral Rights within the Lost Creek Permit Area
Appendix B	Surface and Mineral Rights Adjacent to the Lost Creek Permit Area
Appendix C	Tabulation of Lands
Appendix E	Right of Ways
Table ADJ-1	List of Regulatory Requirements

VOLUME 2 of 5: Appendix D (D1 to D5)

D1	Land Use
D2	Brief History
D3	Archaeological and Paleontological Resources (separate volume – requesting WDEQ confidentiality)
D4	Meteorology, Climatology, and Air Quality
D5	Geology

VOLUME 3a of 5: Appendix D (D6)

D6	Hydrology (through Attachment D6-2b)
----	--------------------------------------

VOLUME 3b of 5: Appendix D (D6)

D6	Hydrology (through Attachments D6-3 and D6-4)
----	---

VOLUME 4 of 5: Appendix D (D7 to D11)

D7	Soils
D8	Vegetation
D9	Wildlife
D10	Background Radiological Characteristics
D11	Wetlands

VOLUME 5 of 5: Operations Plan and Reclamation Plan

Operations Plan (OP)
Groundwater Quality Restoration and Surface Reclamation (RP)

TABLE OF CONTENTS - Detailed

VOLUME 1 of 5: Adjudication Files

Form 1	Application for In Situ Permit to Mine
Form 3	License to Mine Application
Form 8	Surface Owner Consent Form
Appendix A	Surface and Mineral Rights within the Lost Creek Permit Area
Appendix B	Surface and Mineral Rights Adjacent to the Lost Creek Permit Area
Appendix C	Tabulation of Lands
Appendix E	Right of Ways
Table ADJ-1	List of Regulatory Requirements

VOLUME 2 of 5: Appendix D (D1 to D5)

D1	Land Use	D1-1
D1.1	Rangeland and Grazing	D1-1
D1.2	Wildlife Habitat and Hunting.....	D1-2
D1.3	Recreation and Special Use Areas	D1-2
D1.4	Minerals and Energy	D1-2
D1.5	Transportation and Infrastructure	D1-3
D1.6	Population Distribution.....	D1-3
D2	Brief History.....	D2-1
D3	Archaeological and Paleontological Resources	D3-1
	(separate volume – requesting WDEQ confidentiality)	
D4	Meteorology, Climatology, and Air Quality	D4-1
D4.1	Meteorology and Climatology	D4-1
D4.1.1	Temperature	D4-2
D4.1.2	Precipitation	D4-2
D4.1.3	Humidity	D4-2
D4.1.4	Wind.....	D4-3
D4.1.5	Evaporation.....	D4-3
D4.1.6	Severe Weather	D4-3
D4.1.7	Local Air Flow Patterns and Characteristics	D4-4
D4.2	Air Quality	D4-4
D4.2.1	Background Conditions	D4-4
D4.2.2	Air Quality Construction Permit.....	D4-6

TABLE OF CONTENTS – Detailed (continued)

VOLUME 2 of 5: Appendix D (D1 to D5) continued

D5	Geology.....	D5-1
D5.1	Regional Geology	D5-1
D5.1.1	Stratigraphy.....	D5-1
D5.1.2	Structure.....	D5-2
D5.2	Site Geology.....	D5-2
D5.2.1	Stratigraphy.....	D5-3
D5.2.2	Structure.....	D5-4
D5.2.3	Ore Mineralogy and Geochemistry.....	D5-4
D5.2.4	Subsurface Exploration Activities	D5-6
D5.2.4.1	Uranium Exploration	D5-6
D5.2.4.2	Other Mineral Exploration.....	D5-8
D5.3	Seismology.....	D5-8
D5.3.1	Historic Seismicity.....	D5-8
D5.3.1.1	Town of Bairoil Area.....	D5-8
D5.3.1.2	City of Rawlins Area	D5-9
D5.3.1.3	City of Rock Springs Area.....	D5-10
D5.3.1.4	City of Lander Area	D5-10
D5.3.1.5	City of Casper Area	D5-11
D5.3.2	Uniform Building Code	D5-12
D5.3.3	Deterministic Analysis of Active Fault Systems	D5-12
D5.3.4	Maximum Tectonic Province Earthquake “Floating Earthquake” Seismogenic Source	D5-13
D5.3.5	Short-Term Probabilistic Seismic Hazard Analysis	D5-14

VOLUME 3a of 5: Appendix D (D6)

D6	Hydrology	D6-1
D6.1	Surface Water.....	D6-1
D6.1.1	Drainage Characteristics.....	D6-1
D6.1.2	Surface Water Use	D6-3
D6.1.3	Surface Water Quality.....	D6-3
D6.2	Groundwater Occurrence.....	D6-5
D6.2.1	Regional Hydrogeology	D6-5
D6.2.1.1	Lewis Shale.....	D6-7
D6.2.1.2	Fox Hills Formation.....	D6-7
D6.2.1.3	Lance Formation	D6-7
D6.2.1.4	Fort Union Formation	D6-8
D6.2.1.5	Battle Spring Formation- Wasatch Formation.....	D6-8
D6.2.1.6	Undifferentiated Tertiary and Quaternary Sediments...	D6-9
D6.2.2.2	Potentiometric Surface, Groundwater Flow Direction and Hydraulic Gradient.....	D6-13

TABLE OF CONTENTS – Detailed (continued)

VOLUME 3a of 5: Appendix D (D6) continued

D6.2.2	Site Hydrogeology	D6-10
D6.2.2.1	Hydrostratigraphic Units.....	D6-10
D6.2.2.3	Aquifer Properties.....	D6-15
D6.3	Groundwater Use	D6-20
D6.4	Groundwater Quality	D6-22
D6.4.1	Regional Groundwater Quality	D6-22
D6.4.2	Site Groundwater Quality	D6-25
D6.4.2.1	Groundwater Monitoring Network and Parameters....	D6-25
D6.4.2.2	Groundwater Quality Sampling Results	D6-26
D6.5	Hydrologic Conceptual Model.....	D6-31
D6.5.1	Regional Groundwater Conceptual Model	D6-31
D6.5.2	Site Groundwater Conceptual Model.....	D6-32
D6.5.2.1	Hydrostratigraphic Units.....	D6-32
D6.5.2.2	Potentiometric Surface and Hydraulic Gradients	D6-33
D6.5.2.3	Aquifer Properties.....	D6-35
D6.5.2.4	Water Quality.....	D6-35
D6.5.2.5	Summary	D6-36

VOLUME 4 of 5: Appendix D (D7 to D11)

D7	Soils.....	D7-1
D7.1	Introduction.....	D7-1
D7.2	Methods.....	D7-1
D7.2.1	Review of Existing Literature.....	D7-1
D7.2.2	Soil Survey.....	D7-2
D7.2.3	Field Sampling.....	D7-3
D7.2.4	Laboratory Analysis.....	D7-3
D7.3	Results and Discussion	D7-3
D7.3.1	General characteristics	D7-3
D7.3.2	Soil Mapping Unit Interpretation.....	D7-4
D7.4	Topsoil Suitability.....	D7-5
D7.5	Topsoil Protection.....	D7-5
D7.6	Geotechnical Investigations.....	D7-5
D7.7	Historical Surface Disturbances.....	D7-6
D8	Vegetation.....	D8-1
D8.1	Introduction.....	D8-1
D8.2	Description of the Study Area.....	D8-1
D8.3	Methods.....	D8-2
D8.3.1	Vegetation Type Identification and Mapping	D8-2
D8.3.2	Species Composition.....	D8-2
D8.3.3	Sampling Design.....	D8-3

TABLE OF CONTENTS – Detailed (continued)

VOLUME 4 of 5: Appendix D (D7 to D11) continued

D8.3.4	Sampling Times	D8-3
D8.3.5	Collection and Analysis of Vegetation Cover Data.....	D8-3
D8.3.6	Collection and Analysis of Tree and Shrub Density Data	D8-4
D8.3.7	Cropland and Prime Farmland Description	D8-4
D8.3.8	Plant Species of Special Concern	D8-4
D8.4	Results.....	D8-5
D8.4.1	Description of Vegetation Types	D8-5
D8.4.1.1	Upland Big Sagebrush Shrubland Type.....	D8-5
D8.4.1.2	Lowland Big Sagebrush Shrubland Type	D8-6
D8.4.2	Sample Site Locations.....	D8-8
D8.4.3	Weeds, Selenium Indicators, Endangered or Threatened Species	D8-8
D8.4.4	Species Composition.....	D8-8
D8.4.5	Sample Adequacy	D8-9
D8.5	Discussion.....	D8-9
D8.6	Conclusions.....	D8-10
D9	Wildlife	D9-1
D9.1	Habitat Description and Wildlife Species.....	D9-2
D9.2	Methods.....	D9-3
D9.2.1	File and Data Searches.....	D9-3
D9.2.2	Field Surveys	D9-3
D9.3	Results.....	D9-4
D9.3.1	Big Game	D9-4
D9.3.2	Upland Game Birds.....	D9-5
D9.3.3	Raptors	D9-6
D9.3.4	Waterfowl and Shorebirds	D9-7
D9.3.5	Passerine and Breeding Birds	D9-7
D9.3.6	Migratory Birds of High Federal Interest	D9-8
D9.3.7	Other Mammals	D9-9
D9.3.8	T&E and State-Listed Species of Concern	D9-9
D9.3.9	Reptiles and Amphibians	D9-10
D9.3.10	Fish and Aquatic Life.....	D9-11
D10	Background Radiological Characteristics.....	D10-1
D10.1	Background Gamma Radiation Survey and Soils Sampling	D10-1
D10.1.1	Methods.....	D10-2
D10.1.1.1	Gamma Surveys and Mapping.....	D10-2
D10.1.1.2	Cross-Calibration between NaI Detectors and the HPIC.....	D10-4
D10.1.1.3	Soil Sampling and Gamma Correlation Grids	D10-5
D10.1.2	Data Quality Assurance and Quality Control	D10-6

TABLE OF CONTENTS – Detailed (continued)

VOLUME 4 of 5: Appendix D (D7 to D11) continued

D10.1.3	Results.....	D10-7
D10.1.3.1	Baseline Gamma Survey.....	D10-7
D10.1.3.2	Baseline Soil Sampling.....	D10-8
D10.1.3.3	HPIC / NaI Cross-Calibration.....	D10-8
D10.1.3.4	Three-Foot HPIC Equivalent Gamma Exposure Rate Mapping.....	D10-9
D10.1.3.5	Soil Ra-226 Concentration Mapping.....	D10-10
D11	Wetlands.....	D11-1
D11.1	Introduction.....	D11-1
D11.2	Methods.....	D11-1
D11.3	Results and Discussion.....	D11-2

VOLUME 5 of 5: Operations Plan and Reclamation Plan

Operations Plan (OP)	OP-1
OP 1.0	Overview of Proposed Operation.....	OP-1
OP 1.1	Site Facilities Layout.....	OP-2
OP 1.2	Ore Deposits.....	OP-3
OP 2.0	Project Development, Maintenance, and Monitoring.....	OP-4
OP 2.1	Project Schedule.....	OP-4
OP 2.2	Additional Regulatory Requirements.....	OP-6
OP 2.3	Land Use.....	OP-7
OP 2.4	Cultural Resources Mitigation Program.....	OP-7
OP 2.5	Topsoil Management.....	OP-8
OP 2.5.1	Short-Term Topsoil Protection.....	OP-9
OP 2.5.2	Long-Term Topsoil Protection.....	OP-9
OP 2.6	Roads.....	OP-10
OP 2.7	Vegetation Protection and Weed Control.....	OP-11
OP 2.8	Wildlife Protection and Monitoring.....	OP-12
OP 2.8.1	Wildlife Protection Measures.....	OP-12
OP 2.8.1.1	Activity Restrictions.....	OP-12
OP 2.8.1.2	Road Use.....	OP-12
OP 2.8.1.3	Fencing and Screening.....	OP-13
OP 2.8.1.4	Transmission Line.....	OP-13
OP 2.8.1.5	Human Disturbance.....	OP-13
OP 2.8.1.6	Wildlife Enhancements.....	OP-13
OP 2.8.2	Wildlife Monitoring.....	OP-14
OP 2.8.2.1	Raptors.....	OP-14
OP 2.8.2.2	Sage Grouse.....	OP-15

TABLE OF CONTENTS – Detailed (continued)

VOLUME 5 of 5: Operations Plan and Reclamation Plan continued

OP 2.9	Prevention and Remediation of Accidental Releases	OP-15
OP 2.9.1	Pipelines, Fittings, Valves, and Tanks	OP-16
OP 2.9.2	Wells	OP-16
OP 2.9.3	Buildings	OP-16
OP 2.9.4	Storage Ponds	OP-16
OP 2.9.5	Fuel Storage Areas	OP-18
OP 2.10	Air Monitoring	OP-18
OP 2.11	Groundwater Monitoring	OP-18
OP 2.11.1	On-Site Wells	OP-18
OP 2.11.2	Off-Site Wells	OP-19
OP 3.0	Mine Unit Processes, Instrumentation, and Control	OP-19
OP 3.1	Mine Unit Chemistry	OP-19
OP 3.2	Mine Unit Design	OP-20
OP 3.2.1	Injection and Production Well Patterns	OP-22
OP 3.2.2	Monitor Well Locations	OP-22
OP 3.2.2.1	Perimeter Monitor Wells	OP-23
OP 3.2.2.2	Observation Wells	OP-23
OP 3.2.2.3	Production Zone Monitor Wells	OP-24
OP 3.2.2.4	Overlying and Underlying Monitor Wells	OP-24
OP 3.3	Well Completion	OP-25
OP 3.4	Well Integrity Testing	OP-26
OP 3.5	Mine Unit Piping and Instrumentation	OP-27
OP 3.6	Mine Unit Control	OP-27
OP 3.6.1	Header House Control	OP-28
OP 3.6.2	Pattern Control	OP-29
OP 3.6.3	Projected Water Balance and Water Level Changes ...	OP-30
OP 3.6.3.1	Water Balance	OP-30
OP 3.6.3.2	Mine Unit Interference	OP-31
OP 3.6.3.3	Cumulative Drawdown	OP-31
OP 3.6.4	Excursion Monitoring and Control	OP-33
OP 3.6.4.1	Mine Unit Baseline Water Quality and Upper Control Limits	OP-33
OP 3.6.4.2	Excursion Detection	OP-34
OP 3.6.4.3	Excursion Verification and Corrective Action	OP-34
OP 3.6.4.4	Ability to Control an Excursion	OP-35
OP 4.0	Plant Processes, Instrumentation, and Control	OP-36
OP 4.1	Ion Exchange (Resin-Loading) Circuit	OP-36
OP 4.2	Elution Circuit	OP-37
OP 4.3	Precipitation/Filtration Circuit	OP-37
OP 4.4	Major Process Equipment and Instrumentation	OP-38

TABLE OF CONTENTS – Detailed (continued)

VOLUME 5 of 5: Operations Plan and Reclamation Plan continued

OP 5.0	Effluent Control Systems.....	OP-38
OP 5.1	Gaseous Emissions and Airborne Particulates.....	OP-39
OP 5.1.1	Non-Radioactive Emissions and Particulates	OP-39
OP 5.1.2	Radioactive Emissions.....	OP-40
OP 5.2	Liquid Wastes	OP-40
OP 5.2.1	Liquid Non-11(e)(2) Byproduct Materials	OP-41
OP 5.2.1.1	“Native” Groundwater Recovered during Well Development, Sample Collection, and Pump Testing.....	OP-41
OP 5.2.1.2	Storm Water Runoff.....	OP-41
OP 5.2.1.3	Waste Petroleum Products and Chemicals	OP-41
OP 5.2.1.4	Domestic Liquid Waste	OP-42
OP 5.2.2	Sources of Liquid 11(e)(2) Byproduct Material	OP-42
OP 5.2.2.1	Liquid Process Waste.....	OP-43
OP 5.2.2.2	“Affected” Groundwater Generated during Well Development and Sample Collection.....	OP-44
OP 5.2.2.3	Groundwater Generated during Aquifer Restoration.....	OP-45
OP 5.2.3	Disposal of Liquid 11(e)(2) Byproduct Materials	OP-45
OP 5.2.3.1	Storage Ponds.....	OP-45
OP 5.2.3.2	UIC Class I Wells	OP-46
OP 5.3	Solid Wastes.....	OP-46
OP 5.3.1	Solid Non-11(e)(2) Byproduct Materials.....	OP-46
OP 5.3.2	Solid 11(e)(2) Byproduct Materials.....	OP-47
	Groundwater Quality Restoration and Surface Reclamation (RP)	RP-1
RP 1.0	Completion of Production Operations	RP-2
RP 2.0	Plans and Schedule for Groundwater Quality Restoration	RP-3
RP 2.1	Conditions in the Mineralized Zone Before and After Operations.....	RP-3
RP 2.2	Restoration Requirements.....	RP-4
RP 2.3	Groundwater Restoration Methods.....	RP-5
RP 2.3.1	Groundwater Sweep.....	RP-6
RP 2.3.2	Groundwater Treatment	RP-7
RP 2.3.3	Recirculation	RP-8
RP 2.4	Stabilization Phase	RP-9
RP 2.5	Reporting.....	RP-9
RP 3.0	Mine Unit Reclamation.....	RP-10
RP 3.1	Well Abandonment.....	RP-10
RP 3.2	Facility and Road Reclamation.....	RP-11

TABLE OF CONTENTS – Detailed (continued)

VOLUME 5 of 5: Operations Plan and Reclamation Plan continued

RP 4.0 Reclamation and Decommissioning of Processing and Support
Facilities..... RP-12
RP 4.1 Removal and Disposal of Equipment and Structures RP-13
RP 4.2 Waste Storage, Treatment, and Disposal Facilities RP-14
RP 4.3 Buried Piping and Engineering Control Structures RP-14
RP 4.4 Roads..... RP-14
RP 4.5 Soil Replacement and Revegetation RP-15
 RP 4.5.1 Post-Operational Land Use RP-15

 RP 4.5.2 Surface Preparation RP-15
 RP 4.5.3 Soil Replacement RP-16
 RP 4.5.4 Seed Mix, Reseeding Methods, and Fencing RP-16
 RP 4.5.5 Revegetation Success Criteria..... RP-17
RP 5.0 Financial Assurance RP-17

TABLE OF CONTENTS – Detailed (continued)

FIGURES

VOLUME 1 of 5: Adjudication Files – No Figures

VOLUME 2 of 5: Appendix D (D1 to D5)

D1 Land Use

Figure D1-1a General Location of the Permit Area

Figure D1-1b Aerial Photo of the Permit Area

Figure D1-2 Land Ownership

Figure D1-3 BLM Grazing Allotments

Figure D1-4 Nuclear Fuel Cycle Facilities and Mines within 50 Miles

Figure D1-5 Regional Transportation Network

Figure D1-6 Significant Population Centers within 50 Miles

D3 Archaeological and Paleontological Resources

(separate volume – requesting WDEQ confidentiality)

D4 Meteorology, Climatology, and Air Quality

Figure D4-1 Meteorological Stations within 50 Miles of the Permit Area

Figure D4-2 Monthly Total Precipitation in the Project Region

Figure D4-3a to m Wind Speed and Wind Direction at the Lost Soldier
Meteorological Station

Figure D4-4 Tornado Statistics by County

Figure D4-5 Air Particulate Sampling Locations

Figure D4-6 Passive Radiological Sampling Locations

D5 Geology

Figure D5-1 Regional Geologic Map

Figure D5-2a Geologic Cross Section Schematic of the Permit Area

Figure D5-2b General Stratigraphy of the Upper Battle Spring Formation

Figure D5-3 Historical Seismic Activities in Wyoming

Figure D5-4 UBC Seismic Zones

Figure D5-5 Active Fault Systems in the Vicinity of the Permit Area

Figure D5-6 500-Year Probabilistic Acceleration Map of Wyoming

VOLUME 3a of 5: Appendix D (D6)

D6 Hydrology

Figure D6-1 Surface Drainage Map for the Lost Creek Permit Area

Figure D6-2 Longitudinal Profile along Battle Spring Draw from the
Northern Boundary

Figure D6-3a Photo of Crooked Well Reservoir Taken During Spring
Snowmelt Runoff Looking West

TABLE OF CONTENTS – Detailed (continued)

FIGURES (continued)

VOLUME 3a of 5: Appendix D (D6) continued

- Figure D6-3b Surface Water Permits within Three Miles of the Permit Area
- Figure D6-4 Storm Water Sampler Installed to Collect a One-Liter Sample of Snowmelt or Storm Surface Runoff.
- Figure D6-5 Locations of Storm Water and Spring Snowmelt Samplers
- Figure D6-6 Potentiometric Surface, Wasatch/Battle Spring Aquifers, Great Divide Basin
- Figure D6-7 Regional Hydrostratigraphic Units of Interest, Great Divide Basin
- Figure D6-8 Potentiometric Surface, Tertiary Aquifer System, Great Divide Basin
- Figure D6-9 Location Map, Lost Creek Monitor Wells
- Figure D6-10 Site Hydrostratigraphic Units, Lost Creek Project
- Figure D6-11a Potentiometric Surface, HJ Production Zone, November 2007
- Figure D6-11b Potentiometric Surface, Overlying Aquifer (LFG), November 2007
- Figure D6-11c Potentiometric Surface, Underlying Aquifer (UKM), November 2007
- Figure D6-11d Potentiometric Surface, HJ Production Zone, August 1982 and October 2006
- Figure D6-12 Location of Well Groups Used to Evaluate Vertical Hydraulic Gradients
- Figure D6-13 Location of Pump Tests Conducted in 1982 and 2006
- Figure D6-14a Location of LC19M Pump Test and Monitoring Wells, 2007
- Figure D6-14b Location of LC16M Test Wells, 2007
- Figure D6-15 Drawdown in the HJ Aquifer at the End of the LC19M Pumping Test
- Figure D6-16 Drawdown in the HJ Aquifer Near the End of the LC16M Pump Test
- Figure D6-17 Spatial Distribution of Aquifer Transmissivity
- Figure D6-18 BLM Wells near the Lost Creek Permit Area
- Figure D6-19 BLM Battle Spring Draw Well No. 4451
- Figure D6-20 BLM Boundary Well No. 4775
- Figure D6-21 BLM Battle Spring Well No. 4777
- Figure D6-22 BLM East Eagle Nest Draw Well
- Figure D6-23 Location of Historic Site Monitor Wells

TABLE OF CONTENTS – Detailed (continued)

FIGURES (continued)

VOLUME 3a of 5: Appendix D (D6) continued

- Figure D6-24 Location of Site Baseline Monitor Wells
- Figure D6-25a Distribution of TDS, August 1982
- Figure D6-25b Distribution of Radium-226, August 1982
- Figure D6-25c Distribution of Uranium, August 1982
- Figure D6-26a Distribution of Average TDS, September 2006 to May 2007
- Figure D6-26b Distribution of Average Sulfate, September 2006 to May 2007
- Figure D6-27a Piper Diagram – Average Water Quality at Individual Monitor Wells
- Figure D6-27b Piper Diagram – Average Water Quality in Aquifers of Interest
- Figure D6-28a Distribution of Average Uranium, September 2006 to May 2007
- Figure D6-28b Distribution of Average Radium 226+228, September 2006 to May 2007

VOLUME 4 of 5: Appendix D (D7 to D11)

- D7 Soils
 - Figure D7-1 Typical Soil Pit
 - Figure D7-2 Soil Sampling Locations
 - Figure D7-3 Existing Road Disturbance
 - Figure D7-4 Typical Two-Track Road within Lost Creek Permit Area
- D8 Vegetation
 - Figure D8-1 Vegetation Map
 - Figure D8-2 Upland Big Sagebrush Shrubland
 - Figure D8-3 Lowland Big Sagebrush Shrubland
 - Figure D8-4 Intergraded Upland and Lowland Big Sagebrush Shrubland
- D9 Wildlife
 - Figure D9-1 Wildlife Habitat Map
 - Figure D9-2 Pronghorn Range
 - Figure D9-3 Mule Deer Range
 - Figure D9-4 Elk Range
 - Figure D9-5 Moose Range
 - Figure D9-6 Sage Grouse Lek
 - Figure D9-7 Raptor Nests
 - Figure D9-8 Location of Pygmy Rabbit Burrows and Pellets

TABLE OF CONTENTS – Detailed (continued)

FIGURES (continued)

VOLUME 4 of 5: Appendix D (D7 to D11) continued

D10 Background Radiological Characteristics

Figure D10-1 Scanning System Equipment and Configuration

Figure D10-2 Correlation Grid Sampling Design

Figure D10-3 NaI-Based Gamma Survey Results

Figure D10-4 NaI Gamma Survey Results and HPIC Measurement Locations

Figure D10-5 OHV Re-Scan Results

Figure D10-6 Soil Sampling and Gamma Survey Results Overlay

Figure D10-7 Ra-226 Soil Concentration and Gamma Exposure Rate
Correlation

Figure D10-8 Ra-226 and Uranium Soil Concentration Correlation

Figure D10-9 Calibration Curves for HPIC versus NaI Detectors

Figure D10-10 Three-Foot NaI Detector Height Data

Figure D10-11 Three-Foot and 4.5-Foot NaI Detector Height Readings
Correlation

Figure D10-12 Calculated Three-Foot-HPIC-Equivalent Gamma Exposure
Rates

Figure D10-13 Kriged Estimates of the Three-Foot-HPIC-Equivalent Gamma
Exposure Rates

Figure D10-14 Regression Used to Predict Soil Ra-226 Concentrations

Figure D10-15 Estimated Soil Ra-226 Concentrations

D11 Wetlands

Figure D11-1 Potential Wetlands Delineated by the National Wetland
Inventory

Figure D11-2 Photo of Crooked Well Reservoir in the Spring of 2006

VOLUME 5 of 5: Operations Plan and Reclamation Plan

OP Operations Plan

Figure OP-1 Regional Map of the Permit Area

Figure OP-2a Site Layout

Figure OP-2b Lost Creek Ore Trend

Figure OP-2c Road Design Features

Figure OP-3 Typical ISR Operation

Figure OP-4a Lost Creek Project Development, Production, and Restoration
Schedule

Figure OP-4b Proposed Restoration Equipment Schedule

TABLE OF CONTENTS – Detailed (continued)

FIGURES (continued)

VOLUME 5 of 5: Operations Plan and Reclamation Plan continued

OP Operations Plan (continued)

Figure OP-5a Project Water Balance – Production Only

Figure OP-5b Project Water Balance – Production with Ground Water Sweep
(GWS)

Figure OP-5c Project Water Balance – Production with GWS and Reverse
Osmosis (RO)

Figure OP-5d Project Water Balance – Production with RO

Figure OP-5e Project Water Balance – GWS and RO, No Production

Figure OP-5f Project Water Balance – RO Only, No Production

Figure OP-6 Alkaline Uranium Leach Chemistry in the Aquifer

Figure OP-7a Solution Flow Patterns

Figure OP-7b Mine Unit Layout

Figure OP-7c Vegetation and Soil Impacts

Figure OP-8a Injection Well Construction

Figure OP-8b Production Well Construction

Figure OP-8c Monitor Well Construction

Figure OP-9a Well Completion Techniques

Figure OP-9b Restoration Well Completions

Figure OP-10a Ion Exchange Process Flow

Figure OP-10b Plant Process Flow

RP Groundwater Quality Restoration and Surface Reclamation

Figure RP-1 Lost Creek Project Development, Production, and Restoration
Schedule

Figure RP-2 Site Layout with Mining and Restoration Schedules

Figure RP-3 Proposed Bond Schedule

TABLE OF CONTENTS – Detailed (continued)

TABLES

VOLUME 1 of 5: Adjudication Files

ADJ Adjudication Files

Table ADJ-1 List of Regulatory Requirements

VOLUME 2 of 5: Appendix D (D1 to D5)

D1 Land Use

Table D1-1 Hunting Statistics for Hunt Areas that Include the Permit Area

Table D1-2 Population Data

D3 Archaeological and Paleontological Resources

(separate volume – requesting WDEQ confidentiality)

D4 Meteorology, Climatology, and Air Quality

Table D4-1 Comparison of Temperature Data

Table D4-2 Monthly Maximum and Minimum Humidity Measured at the Lost Soldier Meteorological Station

Table D4-3 Monthly Pan Evaporation at the Pathfinder Dam

Table D4-4 Air Stability Data

Table D4-5 Primary and Secondary Limits for National Ambient Air Quality Standards and the State of Wyoming

Table D4-6 Allowable Increments for Prevention of Significant Deterioration of Air Quality

Table D4-7 Reported Sources of Emissions near the Permit Area

Table D4-8 Reported Total Emissions near the Permit Area

Table D4-9 PM₁₀ Concentrations at Lost Creek

Table D4-10 Analytical Results for Passive Radon and Gamma Sampling

D5 Geology

Table D5-1 Permit Area Stratigraphy

Table D5-2 Abandonment Information for Historic Exploration Holes

VOLUME 3a of 5: Appendix D (D6)

D6 Hydrology

Table D6-1a Peak Flow Regression Equations

Table D6-1b Calculated Peak Flows for Battle Spring Draw

Table D6-2 Surface Water Permits within Three Miles of the Permit Area

Table D6-3 Historic Water Quality Results for Battle Spring from the Sweetwater Mill Permit Application

TABLE OF CONTENTS – Detailed (continued)

TABLES (continued)

VOLUME 3 of 5: Appendix D (D6 to D11)

D6 Hydrology (continued)

Table D6-4 Water Quality Results for Seven Storm Water/Spring Snowmelt
Samples Collected on 17 April 2007

Table D6-5 Monitor Well Data

Table D6-6 Water Level Data

Table D6-7a Horizontal Hydraulic Gradients

Table D6-7b Vertical Hydraulic Gradients

Table D6-8 1982 and 2006 Pump Test Results

Table D6-9a 2007 LC19M Long Term Pump Test Monitor Wells

Table D6-9b 2007 LC16M Long Term Pump Test Monitor Wells

Table D6-10a 2007 LC19M Long Term Pump Test Results

Table D6-10b 2007 LC16M Long Term Pump Test Results

Table D6-11 Summary of Aquifer Characteristics

Table D6-12a Groundwater Permits within One-Half Mile of the Permit Area

Table D6-12b Groundwater Permits within Three Miles of the Permit Area

Table D6-13 Lost Creek Project Groundwater Permits

Table D6-14 Baseline Water Quality Monitoring Parameters

Table D6-15a Analytical Results of Baseline Monitoring

Table D6-15b State and Federal Ground Water Quality Criteria for Specified
Parameters

Table D6-16 Distribution of Samples Exceeding EPA MCL for Radium
226+228

VOLUME 4 of 5: Appendix D (D7 to D11)

D7 Soils

Table D7-1 Soil Mapping Units

Table D7-2 Soil Suitability Ranges

D8 Vegetation

Table D8-1 Areal Extent of the Vegetation Types

Table D8-2 Vegetation Sampling Locations and Site Information

Table D8-3 Cover Parameters of the Upland Big Sagebrush Shrubland

Table D8-4 Shrub, Semi-Shrub, and Cactus Densities of the Upland Big
Sagebrush Shrubland

Table D8-5 List of Vegetation Species Observed

TABLE OF CONTENTS – Detailed (continued)

TABLES (continued)

VOLUME 4 of 5: Appendix D (D7 to D11) continued

- Table D8-6 Cover Parameters of the Lowland Big Sagebrush Shrubland
- Table D8-7 Shrub, Semi-Shrub, and Cactus Densities of the Lowland Big Sagebrush Shrubland
- Table D8-8 Prohibited and Restricted Noxious Weeds
- Table D8-9 Evaluation of Sample Adequacy

D9 Wildlife

- Table D9-1 Wildlife Species Observed or Potentially Occurring in the Permit Area
- Table D9-2 Relative Abundance of Big Game Observations
- Table D9-3 Sage Grouse Lek Counts
- Table D9-4 Raptor Nest Locations
- Table D9-5 T&E Wildlife Species Potentially Occurring in the Permit Area
- Table D9-6 Wildlife Species of Special Concern

D10 Background Radiological Characteristics

- Table D10-1 Soil Sampling and Correlation Grid Results
- Table D10-2 Gamma Exposure Rate Differences from Two NaI Detector Heights

VOLUME 5 of 5: Operations Plan and Reclamation Plan

OP Operations Plan

- Table OP-1a Summary of Environmental & Operational Monitoring - During Plant Construction, Mine Unit Development, & Related Site Development Activities
- Table OP-1b Summary of Environmental & Operational Monitoring - During Operations
- Table OP-1c Summary of Environmental & Operational Monitoring - During Restoration/Reclamation/Decommissioning Activities & Evaluation of Activities' Effectiveness
- Table OP-2 Itemized Calculations on the Areas of the Expected Disturbance
- Table OP-3 Culvert Sizing
- Table OP-4 Potentially Disturbed Acreage by Vegetation Type
- Table OP-5 Surface Activity Timing Restrictions for Protection of Wildlife
- Table OP-6 Water Balance Summary
- Table OP-7 Water Balance – Calculation Details
- Table OP-8 Baseline Water Quality Monitoring Parameters

TABLE OF CONTENTS – Detailed (continued)

TABLES (continued)

VOLUME 5 of 5: Operations Plan and Reclamation Plan (continued)

RP Groundwater Quality Restoration and Surface Reclamation
Table RP-1 Restoration Groundwater Quality Parameters
Table RP-2 Typical Specification Data for Removal of Ion Constituents
Table RP-3 Permanent Seed Mixture
Table RP-4 Reclamation/Restoration Bond Estimate
Table RP-5 Equipment and Tank List for Bond Estimate

TABLE OF CONTENTS – Detailed (continued)

PLATES

VOLUME 1 of 5: Adjudication Files

Appendix A Surface and Mineral Rights within the Lost Creek Permit Area
Plate A-1 Surface Owners of Record within Lost Creek Permit Area
Plate A-2 Uranium Mineral Owners of Record within Lost Creek Permit Area
Plate A-3 Oil and Gas Mineral Owners of Record within Lost Creek Permit Area

Appendix B Surface and Mineral Rights Adjacent to the Lost Creek Permit Area
Plate B-1 Surface Owners of Record within Half Mile Outside Permit Boundary
Plate B-2 Uranium Mineral Owners of Record within Half Mile Outside Permit Boundary
Plate B-3 Oil and Gas Mineral Owners of Record within Half Mile Outside Permit Boundary

Appendix C Tabulation of Lands
Plate C-1 Legal Land Description

Appendix E Right of Ways
Plate E-1 Location and Access

VOLUME 2 of 5: Appendix D (D1 to D5)

D5 Geology
Plate D5-1a Geologic Cross Section A-A'
Plate D5-1b Geologic Cross Section B-C
Plate D5-1c Geologic Cross Section C-D
Plate D5-1d Geologic Cross Section D-E
Plate D5-1e Geologic Cross Sections F-F'
Plate D5-1f Geologic Cross Sections G-G'
Plate D5-1g Geologic Cross Sections H-H'
Plate D5-2a Lost Creek Shale Isopach Map
Plate D5-2b HJ Sand Isopach Map
Plate D5-2c Sagebrush Shale Isopach Map
Plate D5-2d UKM Sand Isopach Map

TABLE OF CONTENTS – Detailed (continued)

PLATES (continued)

VOLUME 3a of 5: Appendix D (D6)

D6 Hydrology

Plate D6-1a Groundwater Permits within One-Half Mile of the Permit Area

Plate D6-1b Groundwater Permits within Three Miles of the Permit Area

VOLUME 4 of 5: Appendix D (D7 to D11)

D7 Soils

Plate D7-1 Soil Survey Mapping Units

VOLUME 5 of 5: Operations Plan and Reclamation Plan

OP Operations Plan

Plate OP-1 Plant Site Plan

TABLE OF CONTENTS – Detailed (continued)

ATTACHMENTS

VOLUME 1 of 5: Adjudication Files – No Attachments

VOLUME 2 of 5: Appendix D (D1 to D5)

- D3 Archaeological and Paleontological Resources
(separate volume – requesting WDEQ confidentiality)
- D5 Geology
 - Attachment D5-1 Typical Geophysical Logs
 - Attachment D5-2 Locations, Total Depths, and Completion Dates of
Historical Drill Holes
 - Attachment D5-3 Communication with WDEQ LQD related to Drill Hole
Abandonment

VOLUME 3a of 5: Appendix D (D6)

- D6 Hydrology
 - Attachment D6-1 Surface Water Quality Laboratory Results
 - Attachment D6-2a Evaluation of the LC19M Pump Test
 - Attachment D6-2b Evaluation of the LC16M Pump Test

VOLUME 3b of 5: Appendix D (D6)

- D6 Hydrology
 - Attachment D6-3 Well Completion Logs
 - Attachment D6-4 Groundwater Quality Laboratory Results

VOLUME 4 of 5: Appendix D (D7 to D11)

- D7 Soils
 - Attachment D7-1 Soil Survey Work Plan and Correspondence
 - Attachment D7-2 Field Notes/Soil Sample Point Photographs
 - Attachment D7-3 Laboratory Analysis
- D8 Vegetation
 - Attachment D8-1 Scope of Work
 - Attachment D8-2 Raw Data
 - Attachment D8-3 Sensitive Plant Probability

TABLE OF CONTENTS – Detailed (continued)

ATTACHMENTS (continued)

VOLUME 4 of 5: Appendix D (D7 to D11) continued

D9 Wildlife

Attachment D9-1 WGFD Wildlife Observations System Data

Attachment D9-2 Work Plan for Wildlife 2007

Attachment D9-3 BLM and WDEQ Correspondence

Attachment D9-4 MBHFI in Wyoming

D10 Background Radiological Characteristics

Attachment D10-1 Data Quality Assurance Documentation

Attachment D10-2 Data Quality Control Documentation

Attachment D10-3 Final Baseline Gamma Survey and Ra-226 Soil Maps

Attachment D10-4 HPIC-Adjusted Gamma Datasets

(Electronic Dataset Only)

VOLUME 5 of 5: Operations Plan and Reclamation Plan

OP Operations Plan

Attachment OP-1 UIC Class 1 Well Permit (to be provided)

Attachment OP-2 Specifications for Storage Ponds

TABLE OF CONTENTS

D6	Hydrology	D6-1
D6.1	Surface Water.....	D6-1
D6.1.1	Drainage Characteristics	D6-1
D6.1.2	Surface Water Use	D6-3
D6.1.3	Surface Water Quality.....	D6-3
D6.2	Groundwater Occurrence	D6-5
D6.2.1	Regional Hydrogeology	D6-5
D6.2.1.1	Lewis Shale	D6-7
D6.2.1.2	Fox Hills Formation	D6-7
D6.2.1.3	Lance Formation	D6-7
D6.2.1.4	Fort Union Formation	D6-8
D6.2.1.5	Battle Spring Formation- Wasatch Formation	D6-8
D6.2.1.6	Undifferentiated Tertiary and Quaternary Sediments	D6-9
D6.2.2	Site Hydrogeology	D6-10
D6.2.2.1	Hydrostratigraphic Units.....	D6-10
D6.2.2.2	Potentiometric Surface, Groundwater Flow Direction and Hydraulic Gradient.....	D6-13
D6.2.2.3	Aquifer Properties	D6-15
D6.3	Groundwater Use	D6-20
D6.4	Groundwater Quality.....	D6-22
D6.4.1	Regional Groundwater Quality	D6-22
D6.4.2	Site Groundwater Quality	D6-25
D6.4.2.1	Groundwater Monitoring Network and Parameters.....	D6-25
D6.4.2.2	Groundwater Quality Sampling Results	D6-26
D6.5	Hydrologic Conceptual Model.....	D6-31
D6.5.1	Regional Groundwater Conceptual Model	D6-31
D6.5.2	Site Groundwater Conceptual Model.....	D6-32
D6.5.2.1	Hydrostratigraphic Units.....	D6-32
D6.5.2.2	Potentiometric Surface and Hydraulic Gradients.....	D6-33
D6.5.2.3	Aquifer Properties	D6-35
D6.5.2.4	Water Quality	D6-35
D6.5.2.5	Summary	D6-36

FIGURES

- Figure D6-1 Surface Drainage Map for the Lost Creek Permit Area
- Figure D6-2 Longitudinal Profile along Battle Spring Draw from the Northern Boundary
- Figure D6-3a Photo of Crooked Well Reservoir During Spring Snowmelt Runoff
Looking West
- Figure D6-3b Surface Water Permits within Three Miles of the Permit Area
- Figure D6-4 Storm Water Sampler Installed to Collect a One-Liter Sample of
Snowmelt or Storm Surface Runoff.
- Figure D6-5 Locations of Storm Water and Spring Snowmelt Samplers
- Figure D6-6 Potentiometric Surface, Wasatch/Battle Spring Aquifers, Great Divide Basin
- Figure D6-7 Regional Hydrostratigraphic Units of Interest, Great Divide Basin
- Figure D6-8 Potentiometric Surface, Tertiary Aquifer System, Great Divide Basin
- Figure D6-9 Location Map, Lost Creek Monitor Wells
- Figure D6-10 Site Hydrostratigraphic Units, Lost Creek Project
- Figure D6-11a Potentiometric Surface, HJ Production Zone, November 2007
- Figure D6-11b Potentiometric Surface, Overlying Aquifer (LFG), November 2007
- Figure D6-11c Potentiometric Surface, Underlying Aquifer (UKM), November 2007
- Figure D6-11d Potentiometric Surface, HJ Production Zone, August 1982 and
October 2006
- Figure D6-12 Location of Well Groups Used to Evaluate Vertical Hydraulic Gradients
- Figure D6-13 Location of Pump Tests Conducted in 1982 and 2006
- Figure D6-14a Location of LC19M Pump Test and Monitoring Wells, 2007
- Figure D6-14b Location of LC16M Test Wells, 2007
- Figure D6-15 Drawdown in the HJ Aquifer at the End of the LC19M Pumping Test
- Figure D6-16 Drawdown in the HJ Aquifer Near the End of the LC16M Pump Test
- Figure D6-17 Spatial Distribution of Aquifer Transmissivity
- Figure D6-18 BLM Wells near the Lost Creek Permit Area
- Figure D6-19 BLM Battle Spring Draw Well No. 4451
- Figure D6-20 BLM Boundary Well No. 4775
- Figure D6-21 BLM Battle Spring Well No. 4777
- Figure D6-22 BLM East Eagle Nest Draw Well
- Figure D6-23 Location of Historic Site Monitor Wells
- Figure D6-24 Location of Site Baseline Monitor Wells
- Figure D6-25a Distribution of TDS, August 1982
- Figure D6-25b Distribution of Radium-226, August 1982
- Figure D6-25c Distribution of Uranium, August 1982
- Figure D6-26a Distribution of Average TDS, September 2006 to May 2007
- Figure D6-26b Distribution of Average Sulfate, September 2006 to May 2007
- Figure D6-27a Piper Diagram – Average Water Quality at Individual Monitor Wells
- Figure D6-27b Piper Diagram – Average Water Quality in Aquifers of Interest

Figure D6-28a Distribution of Average Uranium, September 2006 to May 2007
Figure D6-28b Distribution of Average Radium 226+228, September 2006 to May 2007

TABLES

Table D6-1a Peak Flow Regression Equations
Table D6-1b Calculated Peak Flows for Battle Spring Draw
Table D6-2 Surface Water Permits within Three Miles of the Permit Area
Table D6-3 Historic Water Quality Results for Battle Spring from the Sweetwater Mill Permit Application
Table D6-4 Water Quality Results for Seven Storm Water/Spring Snowmelt Samples Collected on 17 April 2007
Table D6-5 Monitor Well Data
Table D6-6 Water Level Data
Table D6-7a Horizontal Hydraulic Gradients
Table D6-7b Vertical Hydraulic Gradients
Table D6-8 1982 and 2006 Pump Test Results
Table D6-9a 2007 LC19M Long Term Pump Test Monitor Wells
Table D6-9b 2007 LC16M Long Term Pump Test Monitor Wells
Table D6-10a 2007 LC19M Long Term Pump Test Results
Table D6-10b 2007 LC16M Long Term Pump Test Results
Table D6-11 Summary of Aquifer Characteristics
Table D6-12a Groundwater Permits within One-Half Mile of the Permit Area
Table D6-12b Groundwater Permits within Three Miles of the Permit Area
Table D6-13 Lost Creek Project Groundwater Permits
Table D6-14 Baseline Water Quality Monitoring Parameters
Table D6-15a Analytical Results of Baseline Monitoring
Table D6-15b State and Federal Ground Water Quality Criteria for Specified Parameters
Table D6-16 Distribution of Samples Exceeding EPA MCL for Radium 226+228

PLATES

Plate D6-1a Groundwater Permits within One-Half Mile of the Permit Area
Plate D6-1b Groundwater Permits within Three Miles of the Permit Area

ATTACHMENTS

Attachment D6-1 Surface Water Quality Laboratory Results
Attachment D6-2a Evaluation of the LC19M Pump Test
Attachment D6-2b Evaluation of the LC16M Pump Test
Attachment D6-3 Well Completion Logs
Attachment D6-4 Groundwater Quality Laboratory Results

D6 HYDROLOGY

This appendix addresses surface water drainage characteristics and use (Sections D6.1.1 and D6.1.2), surface water quality (Section D6.1.3), regional and site hydrogeology (Sections D6.2.1 and D6.2.2), groundwater use (Section D6.3), regional and site groundwater quality (Sections D6.4.1 and D6.4.2), and the regional and site hydrologic conceptual models (Sections D6.5.1 and D6.5.2). Potential hydrologic impacts, mitigation, and monitoring are presented in the **Operations Plan** and **Reclamation Plan**.

D6.1 Surface Water

D6.1.1 Drainage Characteristics

The Permit Area is located in the Great Divide Basin, a topographically closed system which drains internally, due to a divergence in the Continental Divide. Most of the surface water is runoff from precipitation or snowmelt, and it quickly infiltrates, recharging shallow groundwater, evaporates, or is consumed by plants through evapotranspiration. Alluvial deposits, if any, along drainages are not extensive, and the shallow aquifer, Battle Spring, underlying the Permit Area is unconfined, unconsolidated, and poorly stratified. The shallow water table is typically 150 to 200 feet below ground surface (ft bgs).

There are no perennial or intermittent streams within the Permit Area or on adjacent lands. The principal drainage within the Permit Area is Battle Spring Draw, which is dry for the majority of the year (**Figure D6-1**). Battle Spring Draw drains the northeastern 14 percent of the Permit Area; a sub-basin drains the central 47 percent; and an unnamed wash drains the southwestern 39 percent. The central sub-basin is not considered a separate basin because its headwaters begin approximately one mile north of the Permit boundary and end five miles southwest of the Permit boundary near the Kennecott Sweetwater Mill (NRC Source Material License No. SUA-1350, WDEQ Permit 481). The watersheds in the Project Area drain into the Battle Spring Flat, approximately nine miles southwest of the Permit Area. Much of the water conveyed through the ephemeral channels does not reach Battle Spring Flat. Instead, it infiltrates into the alluvium and recharges the Battle Spring aquifer.

The average slope of the Battle Spring Draw (northeastern) drainage in the Permit Area is 1.2 percent, the central drainage has an average slope of 1.5 percent, and the southwestern drainage has an average slope of 1.7 percent. The sinuosity (length of the channel divided by the length of valley) was calculated for the major channel in each

basin. The sinuosity values for the northeastern Battle Spring Draw, central, and southwestern basins are 1.02, 1.15, and 1.16, respectively. The drainage densities range from 3.3 miles per square mile in the southwestern basin to 4.6 miles per square mile and 4.5 miles per square mile in the central and northeastern basins, respectively. A longitudinal profile of the northeastern Battle Spring Draw within the Permit Area is shown in **Figure D6-2**.

The existing drainages are incised, wide u-shaped and have trapezoidal cross-sectional morphologies. Vertical and slumping banks exist where active erosion is occurring. The channels near the downstream boundary of the Permit Area are incised three to six feet and are ten to 15 feet wide. The channel side-slopes range in slope from 1:1 to approximately 2.5:1. The bed material in the larger draws is sandy textured and non-cohesive. Draws around the Permit Area are typically vegetated with sagebrush.

Annual runoff in the Permit Area is very low due to the high infiltration capacity and low annual precipitation. The channels are dry for the majority of the year. Drainages in the Permit Area are naturally ephemeral and primarily flow during spring snowmelt as saturated overland flow when soil moisture is at a maximum. The quantity of spring runoff is variable, depending on the amount of winter snowfall accumulation. Peak runoff from high intensity rain events can be significant; but surface flow is generally short-lived. Storm-water runoff after high intensity rain events is very rare because surface water infiltrates very rapidly or evaporates. Some intermittent and localized flow can occur near a small number of springs; but no surface runoff has been observed from springs within the Permit Area.

Runoff data are limited for the ephemeral and intermittent streams in the Great Divide Basin. There are two USGS streamflow gaging stations within 40 miles of the Permit Area; but they are on perennial streams and are not representative of drainages in the Permit Area. On April 6, 1976, the USGS measured the instantaneous discharge of Lost Soldier Creek, approximately 14.5 miles northeast of the Permit Area. The measurement of 0.2 cubic feet per second was taken during spring runoff so the source of water was predominantly snowmelt (USGS, 2006).

A method for estimating peak stream discharge in ungaged watersheds in response to storms with recurrence intervals from two to 100 years has been developed by Miller (2003). Miller analyzed streamflow data for hundreds of gaged watersheds in Wyoming ranging from one to 1,200 square miles, and developed regional regression relationships based upon basin characteristics (drainage area, geographic factors, elevation, etc.). The most significant independent variables in Sweetwater County were drainage area and latitude. The equations used for each calculation as well as the associated percent errors are summarized in **Table D6-1a**. **Table D6-1b** shows the calculated peak discharges for Battle Spring Draw (the major drainage in the project area) at the exit boundary of the

Project area. Due to the incised nature and the width of the channels, flows from the 100-year flood would likely remain mostly within the channels.

One small (less than one-quarter acre) detention pond exists in the Permit Area, which acts as an off-channel storage area for stock watering. This is Crooked Well Reservoir which is shown in **Figure D6-3a**. This pond is dry for the majority of the year and typically fills from spring snowmelt during the months of March and April. Wetland vegetation has not been observed around this impoundment. This detention pond is not included in the active surface water rights in the area.

D6.1.2 Surface Water Use

Surface-water permits with legal descriptions inside and within three miles of the Permit Area were queried using the Wyoming State Engineers Office (WSEO) Water Rights Database (WSEO, 2006). **Table D6-2** lists the thirteen surface water permits that exist within the three-mile study area, and **Figure D6-3b** displays the locations of these surface water permits. None of these locations are within one-half mile of the Permit Area. All of the surface water permits, with one exception, are related to mining operations. The exception is Robinson Reservoir, which is more than two miles from the Permit Area. This Reservoir was permitted for stock and irrigation purposes, but the permit is expired.

As noted in **Section D6.3**, there are four BLM wells within one mile of the Permit Area. These wells have stock ponds associated with them, although with the exception of one pond that is currently in use, it is not clear how recently the ponds have been used. The water-use permits for these ponds are associated with the wells that supply the ponds, i.e., they are not associated with any surface-water-use permits. Also, as noted in the previous section, the Crooked Well Reservoir (**Figure D6-3a**) is located in the Permit Area. However, it is a small off-channel detention pond, less than one-quarter acre in size, and there is no water-use permit associated with it.

D6.1.3 Surface Water Quality

Under the WDEQ Water Quality Division (WQD) Classification, Battle Spring Draw is listed as a Class 3B water body. Beneficial uses for Class 3B waters can include recreation, wildlife, "other aquatic life," agriculture, industry, and scenic value, but do not include drinking water, game fish, non-game fish, and fish consumption.

Background historic surface water quality within the study area was characterized using water quality data from 1974 and 1975 that were collected as part of the environmental report for the Sweetwater Uranium permit application (Shepard Miller Inc., 1994).

Samples were collected at Battle Spring, which is seven miles southwest of the Permit Area. The historic dataset is small, and more representative of groundwater quality than surface water quality so are not directly comparable to expected surface water conditions within the Permit Area. The water-quality data for the historic sampling at Battle Spring are summarized in **Table D6-3**. Historic sampling of Battle Spring in July 1974 showed that pH was highly alkaline at 9.5. Uranium concentrations ranged from 0.006 to 0.95 milligrams per liter (mg/L).

In April 2006, storm-water samplers were installed at 12 locations in the Permit Area (**Figures D6-4** and **D6-5**). In April 2007, an additional sampler was added to represent an area in the southeastern corner that was added to the Permit Area in the summer of 2006. Three samplers were installed to capture runoff as it enters the Permit Area from the upstream side, and the others capture runoff within the Permit Area or at the downstream boundary. The water samples were collected to characterize the quality of ephemeral surface runoff. The sampling locations were selected based on their topographic potential to concentrate ephemeral surface flow.

Seven samplers collected full, one-liter samples from snowmelt runoff in March and April 2007. These samples were collected on April 17, 2007. The water quality data for these seven samples are summarized in **Table D6-4**. **Attachment D6-1** presents the raw water quality data from the laboratory.

Ionic strength was low in all samples, which is probably due to the majority of the sample being snowmelt water that did not come into contact with the underlying soil. For all samples, the dissolved and total concentrations of trace metals were near or below the detection limit. Radiometric parameters, including uranium, lead-210, polonium-210, and thorium-230, were generally below detection with the exception of dissolved uranium, which was detected at very low concentrations (0.0003 to 0.0004 mg/L) in two samples, suspended uranium (0.0003 to 0.0009 mg/L) in two samples, and total uranium (0.0003 to 0.0009 mg/L) in four samples. Total radium-226 was detected at a low concentration (0.5 picoCuries per liter [pCi/L]) in one sample. This was the LC2 location in the center of the Permit Area in one of the larger channels. Gross alpha was also detected in small amounts (1.1 to 3.6 pCi/L) in six samples. The highest concentration of 3.6 pCi/L was again from the LC2 location. The pH of the sites was slightly acidic to neutral ranging from 6.39 to 7.12. Conductivity was low with less than 100 microSiemens per centimeter for all samples.

In general, the quality of water was very good for all samples. The radiometric parameters detected in the LC2 correlate well with the radiological scans of the Permit Area. This central area has the highest radioactive activity, as indicated by the results from the radiological surveys. Still, the levels are well below all Wyoming agricultural and drinking water standards.

D6.2 Groundwater Occurrence

This section describes the regional and local groundwater hydrology including hydrostratigraphy, groundwater flow patterns, hydraulic gradient and aquifer parameters. The discussion is based on information from investigations performed within the Great Divide Basin, data presented in previous applications/reports for the Permit Area, and the geologic information presented in **Appendix D5** of this report. Regional and site hydrogeology are discussed in **Sections D6.2.1 and D6.2.2**; groundwater use in **Section D6.3**; regional and site groundwater quality in **Sections D6.4.1 and D6.4.2**; and the regional and site hydrologic conceptual models in **Sections D6.5.1 and D6.5.2**.

D6.2.1 Regional Hydrogeology

The Project is located within the northeastern portion of the Great Divide Basin. The basin is topographically closed with all surface water draining to the interior of the basin (**Figure D6-1**). Available data suggest that groundwater flow within the basin is predominately toward the interior of the basin (Collentine, 1981; Welder, 1966; and Mason, 2005). A generalized potentiometric surface map of the Battle Spring/Wasatch Formations, prepared by Welder and McGreevey (1966), indicates groundwater movement toward the center of the basin (**Figure D6-6**). Fisk (1967) suggests that aquifers within the Great Divide Basin may be in communication with aquifers in the Washakie Basin to the south and that groundwater may potentially move across the Wamsutter Arch between the basins.

The topographically elevated area known as the Green Mountains (Townships 26 and 27 North, between Ranges 90 to 94 West) was identified by Fisk as a major recharge area to aquifers within the northeastern portion of the Great Divide Basin (1967). The Rawlins Uplift, Rock Springs Uplift, and Creston Junction, located east, southwest and southeast, respectively, from the Permit Area, were also identified as major recharge areas for aquifers within the Great Divide Basin (Fisk, 1967). The main discharge area for the Battle Spring/Wasatch aquifer system is to a series of lakes, springs and playa lakes beds near the center of the basin. Groundwater potentiometric elevations within the Tertiary aquifer system in the central portion of the basin are generally close to the land surface.

The Battle Spring Formation crops out over most of the northeastern portion of the Great Divide Basin, including much of the Permit Area. The Battle Spring Formation is considered part of the Tertiary aquifer system by Collentine et al. (1981). The Tertiary aquifer system is identified as “the most important and most extensively distributed and accessible groundwater source in the study area” (Collentine et al., 1981). This aquifer system includes the laterally equivalent Wasatch Formation (to the west and south) and

the underlying Fort Union and Lance Formations. The base of the Tertiary aquifer system is marked by the occurrence of the Lewis Shale. The Lewis Shale is generally considered a regional aquitard, although this unit does produce limited amounts of water from sandstone lenses at various locations within the Great Divide Basin and to the south in the Washakie Basin.

Shallower aquifer systems that can be significant water supply aquifers within the Great Divide Basin include the Quaternary and Upper Tertiary aquifer systems. However, as previously stated, the Battle Spring Formation of the Tertiary aquifer system crops out over most of the northeast part of the basin; and the Quaternary and Upper Tertiary aquifer systems are absent or minimal in extent. The shallower aquifer systems are only important sources of groundwater in localized areas, typically along the margin of the basin where the Battle Spring Formation is absent. Aquifer systems beneath the Tertiary include the Mesaverde, Frontier, Cloverly, Sundance-Nugget, and Paleozoic aquifer systems (Collentine et al., 1981). In the northeast Great Divide Basin, these aquifer systems are only important sources of water in the vicinity of outcrops near structural highs, such as the Rawlins Uplift.

For purposes of this application, only hydrogeologic units younger than and including the Lewis Shale (Upper Cretaceous age) are described, with respect to general hydrologic properties and potential for groundwater supply. The Lewis Shale is an aquitard and is considered the base of the hydrogeologic sequence of interest within the Great Divide Basin. Units deeper than the Lewis Shale, the top of which is about 14,000 ft bgs in the Permit Area, are generally too deep to economically develop for water supply or have elevated total dissolved solid (TDS) concentration that renders them unusable for human consumption. Exceptions to this can be found along the very eastern edge of the basin, tens of miles from the Permit Area, where some Lower Cretaceous and older units provide relatively good quality water from shallow depths. Hydrologic units of interest within the northeast Great Divide Basin are shown on the stratigraphic column in **Figure D6-7** and further described below, from deepest to shallowest:

- Lewis Shale (aquitard between Tertiary and Mesaverde aquifer systems);
- Fox Hills Formation (Cretaceous);
- Lance Formation (Tertiary aquifer system);
- Fort Union Formation (Tertiary aquifer system);
- Battle Spring Formation-Wasatch Formation (Tertiary aquifer system);
- Undifferentiated Tertiary Formations (Upper Tertiary aquifer system, including Bridger, Uinta, Bishop Conglomerate, Browns Park, and South Pass); and
- Undifferentiated Quaternary Deposits (Quaternary aquifer system).

Discussion of the regional characteristics for each of these hydrostratigraphic units is provided below.

D6.2.1.1 *Lewis Shale*

The Lewis Shale underlies the Fox Hills Formation and is generally considered an aquitard in the Great Divide Basin. This unit is described by Welder and McGreevey (1966) as light to dark gray, carbonaceous shale with beds of siltstone and very fine-grained sandstone. The Lewis Shale is up to 2,700 feet thick, generally increasing in thickness toward the east side of the basin. In the Permit Area, the Lewis Shale is 1,200 feet thick. Small quantities of water may be available from the thin sandstone beds within this unit near the margins of the basin. The Lewis Shale acts as the confining unit between the Tertiary and Mesaverde aquifer systems.

D6.2.1.2 *Fox Hills Formation*

Fox Hills Formation overlies the Lewis Shale and consists of very fine-grained sandstone, siltstone and coal beds. It is not considered to be an important aquifer in the Permit Area.

D6.2.1.3 *Lance Formation*

Overlying the Fox Hills Formation is the Lance Formation, consisting predominately of very fine-to fine-grained lenticular, clayey, calcareous sandstone. Shale, coal and lignite beds are present within the formation, which reaches a maximum thickness of approximately 4,500 feet (Welder, 1966). In the Permit Area, the Lance Formation is approximately 3,000 feet thick.

Collentine et al. (1981) include the Lance Formation (Aquifer) as the lower-most aquifer within the Tertiary aquifer system. However, the Lance Aquifer is included as part of the Mesaverde aquifer system by Freethey and Cordy (1991). Several stock wells, located along the eastern outcrop area of the basin, are completed in the Lance Aquifer. The stock wells have estimated yields of five to 30 gallons per minute (gpm). Hydraulic conductivity for the Mesaverde aquifer system reported by Freethey and Cordy (1991) (which, by the authors' designation, includes the Fox Hills Sandstone, Lewis Shale, and Mesaverde Group, in addition to the Lance Aquifer) is reported to range from 0.0003 to 2.2 feet per day (ft/d). Because of the limited number of wells completed within the Lance Aquifer in the Great Divide Basin, there are insufficient data to develop representative potentiometric surface maps for this hydrologic unit. However the potentiometric surface is most likely similar in orientation to that seen in the overlying Fort Union and Battle Spring/Wasatch aquifers, with inferred groundwater movement generally toward the center of the basin. No regionally extensive aquitards between the

Fort Union and Lance Formation were identified or reported in the hydrologic studies, investigations, and reports reviewed for this permit application.

D6.2.1.4 Fort Union Formation

The Paleocene-age Fort Union Formation is between the Lance Formation and the overlying Wasatch and Battle Spring Formations, reaching a maximum thickness of approximately 6,000 feet within the Great Divide/Washakie Basin area. In the Permit Area, it is approximately 4,650 feet thick. The Fort Union Formation is present at or near land surface in a band around the Rock Springs Uplift and in the northeastern corner of the Great Divide Basin (Mason, 2005). The Fort Union Formation is described as a fine- to coarse-grained sandstone with coal and carbonaceous shale. Siltstone and claystone are present in the upper part of the formation (Welder, 1966).

A potentiometric surface map, prepared by Natftz (1996) that groups the Fort Union aquifer with the Battle Spring/Wasatch aquifers, shows inferred movement of groundwater toward the basin center (**Figure D6-8**).

The Fort Union aquifer is largely undeveloped and unknown as a source of groundwater supply except in areas where it occurs at shallow depths along the margins of the basin. Well yields from the Fort Union aquifer within the Great Divide and Washakie Basins range from three to 300 gpm. Estimates of transmissivity for the Fort Union aquifer are highly variable. Ahern (1981) estimated transmissivity of less than three square feet per day (ft^2/d) for ten Fort Union Formation oil fields in the Green River Basin. Collentine et al. (1981) reported transmissivity of the Fort Union aquifer as characteristically less than $325 \text{ ft}^2/\text{d}$ from oil well data.

Water quality for the Fort Union aquifer is described in **Section D6.4**.

D6.2.1.5 Battle Spring Formation- Wasatch Formation

The most important water-bearing aquifers within the Great Divide Basin are in the Wasatch Formation and the Battle Spring Formation. The Wasatch and Green River Formations grade into the Battle Spring Formation in the northeastern portion of the basin. The Battle Spring Formation is absent along the eastern margin of the Great Divide Basin near the county line between Sweetwater and Carbon Counties. The termination of the Battle Spring Formation to the east and north is abrupt, controlled largely by structural features, including the Rawlins Uplift to the east and the Green Mountains to the north. A dry oil test in Section 14, Township 24 North, Range 90 West, located within a few miles of the eastern limit of the Battle Spring Formation, had a reported thickness of over 6,000 feet of fine- to coarse-grained sandstone that was

interpreted by the American Stratigraphic Company as the Battle Spring Formation. Within the Permit Area, the Battle Spring Formation is over 6,200 feet thick

The Battle Spring Formation is described as an arkosic fine- to coarse-grained sandstone with claystone and minor conglomerates. There are typically several water-bearing sands within the Battle Spring Formation. The Battle Spring aquifers are included in the Tertiary aquifer system, as defined by Collentine et al. (1981).

Groundwater within the Battle Spring aquifers is typically under confined conditions, although locally unconfined conditions exist. The potentiometric surface within the Battle Spring aquifers is usually within 200 feet of the ground surface (Welder, 1966). Most wells drilled for water supply in this unit are less than 1,000 feet deep. The potentiometric surface map of Wasatch and Battle Spring aquifers (**Figure D6-6**) indicates groundwater movement toward the center of the basin (Welder, 1966). From the Permit Area, the potentiometric surface dips to the southwest at approximately 50 feet per mile (ft/mi) (a hydraulic gradient of 0.01 foot per foot [ft/ft]). The hydraulic gradient becomes steeper near the margins of the basin, where recharge to the aquifer is occurring.

Collentine et al. (1981) report that wells completed in the Battle Spring aquifers typically yield 30 to 40 gpm; but yields as high as 150 gpm are possible. Collentine et al. (1981) also reported that pump tests conducted on 26 wells completed within the Battle Spring aquifers resulted in transmissivity values ranging from 3.9 to 423 ft²/d, although most wells were less than 67 ft²/d. Specific capacity was less than one gallon per minute per foot for 23 of 26 wells tested.

Water quality for the Wasatch/Battle Spring aquifers is described in **Section D6.4**.

D6.2.1.6 Undifferentiated Tertiary and Quaternary Sediments

Undifferentiated Tertiary and Quaternary units above the Battle Spring/Wasatch Formations can be sources of water supply; but wells in the northeastern part of the Great Divide Basin are rare and generally limited to the margins of the basin where the Battle Spring Formation is not present. Commonly, along the margins of the basin, hydrostratigraphic units younger than the Battle Spring/Wasatch have been deposited on rocks of Cretaceous age or older. Water supply wells along the margins of the basin are often completed in both the older hydrostratigraphic units and Tertiary and Quaternary sediments. Water quality within these units tends to be variable and available resources of good quality water are limited.

The undifferentiated Tertiary units consist of interbedded claystone, sandstone and conglomerate with the coarser grained facies providing suitable groundwater resources where present. The undifferentiated Tertiary units are absent within the Permit Area and are not discussed further.

The undifferentiated Quaternary units consist of clay, silt, sand, gravel and conglomerates that are poorly consolidated to unconsolidated (Welder, 1966). These units represent windblown, alluvial and lake deposits. Where present, these deposits can provide acceptable yields of groundwater of relatively good quality. Thin deposits of Quaternary sediments are present within surface drainages in the Permit Area but are usually above the water table and unsaturated. Therefore, Quaternary sediments are not an important groundwater source in the vicinity of the Project and are not described further.

D6.2.2 Site Hydrogeology

LC ISR, LLC has been collecting lithologic, water level, water quality, and pump test data as part of its ongoing evaluation of hydrologic conditions at the Project. In addition to recent data acquisition, historic data collected for Conoco (Hydro-Search, Inc., 1982) were used to support this evaluation. Drilling and installation of borings and monitor wells is ongoing to provide additional data to further refine the site hydrologic conceptual model. Water level measurements, both historic and recent, provide data to assess potentiometric surface, hydraulic gradients and inferred groundwater flow directions for the aquifers of interest at the Project. Two recently completed long-term pump tests (**Attachments D6-2a** and **D6-2b**) and several shorter-term pump tests (Hydro-Engineering, 2007), as well as the pump tests conducted for Conoco (Hydro-Search, Inc., 1982), were used to evaluate hydrologic properties of the aquifers of interest, to assess hydraulic characteristics of the confining units, and to evaluate impacts to the hydrologic system of the Lost Creek Fault (Fault) through the Permit Area (**Section D5.2.2**). Results of Permit Area water quality sampling and analysis are presented in **Section D6.4.2**.

Figure D6-9 shows the monitor wells, current and historic, that were used in the site hydrologic evaluation. **Table D6-5** provides completion data for the monitor wells currently in use, and **Attachment D6-3** includes well completion logs for those wells.

D6.2.2.1 Hydrostratigraphic Units

LC ISR, LLC has employed the following nomenclature for the hydrostratigraphic units of interest within the Project. The primary uranium production zone is identified as the HJ Horizon. The HJ Horizon is subdivided into the Upper (UHJ), Middle (MHJ) and Lower (LHJ) Sands. The HJ Horizon is bounded above and below by arially extensive confining units identified as the Lost Creek Shale and the Sage Brush Shale, respectively.

Overlying the Lost Creek Shale is the FG Horizon. The deepest sand in the FG Horizon, the Lower FG (LFG) Sand, is the overlying aquifer to the HJ Horizon. Beneath the Sage Brush Shale is the KM Horizon. The uppermost sand within the KM Horizon, designated the Upper KM (UKM) sand, is a secondary production zone and also the underlying aquifer to the HJ Horizon. The No Name Shale unit separates the UKM and Middle KM (MKM) Sand. The MKM Sand is the underlying aquifer to the UKM Sand. The shallowest occurrence of groundwater within the Permit Area occurs within the DE Horizon, which is above the FG Horizon. **Figure D6-10** depicts the hydrostratigraphic relationship of these units.

A brief description of each hydrostratigraphic unit follows, from shallowest to deepest.

DE Horizon

The DE Horizon is the shallowest occurrence of groundwater within the Permit Area, although the horizon is not saturated in all portions of the Permit Area. The DE Horizon consists of a sequence of sands and discontinuous clay/shale units. In the southern part of the Permit Area, sands of the DE Horizon coalesce with sands of the FG Horizon. The top of the unit ranges from 100 to 200 ft bgs.

FG Horizon

The top of the FG Horizon occurs at depths of approximately 250 to 300 ft bgs on the north side of the Fault and 275 to 350 ft bgs on the south side of the Fault within the Permit Area (**Section D5.2.2**). The FG Horizon is subdivided into the Upper (UFG), Middle (MFG) and Lower (LFG) Sands. The total thickness of the FG Horizon is approximately 100 feet. The basal unit in the FG Horizon, the LFG Sand, ranges from 20 to 50 feet thick within the Permit Area. The LFG Sand is designated as the overlying aquifer for the HJ Horizon.

Lost Creek Shale

Underlying the FG Sands is the Lost Creek Shale. The Lost Creek Shale appears continuous across the Permit Area, ranging from five to 45 feet in thickness. Typically, this unit has a thickness of ten to 25 feet (**Figure D6-10**). The Lost Creek Shale is the confining unit between the overlying aquifer (LFG Sand) and the HJ Horizon. The confining characteristics of the Lost Creek Shale have been demonstrated with a pump test, as described later in this application.

HJ Horizon

The HJ Horizon is the primary target for uranium production at the Lost Creek Project. For purposes of uranium ISR operations, the HJ Horizon has been subdivided into three Sands: the Upper HJ (UHJ), Middle HJ (MHJ) and the Lower (LHJ) Sand. These sands are generally composed of coarse-grained arkosic sands with thin lenticular intervals of fine sand, mudstone and siltstone. The bulk of the uranium mineralization is present in the MHJ Sand. The total thickness of the HJ Horizon ranges from 100 to 160 feet, averaging approximately 120 feet (**Figure D6-10**). The top of the HJ Horizon ranges from approximately 300 to 450 ft bgs within the Permit Area. The three sands are generally separated by thin clayey units that are not laterally extensive and, based on pump test results, do not act as confining units to prevent groundwater movement vertically between the HJ Sands. The underlying aquifer to the HJ Horizon is the UKM Sand, which is also a potential uranium production zone. Therefore, the deepest sand within the HJ Horizon, the LHJ Sand, is also designated as the overlying aquifer to the UKM Sand.

Sage Brush Shale

Beneath the HJ Horizon is the Sage Brush Shale, at depths ranging from 450 to 550 ft bgs. The Sage Brush Shale is laterally extensive and ranges from five to 75 feet in thickness (**Figure D6-10**). The Sage Brush Shale is the lower confining unit to the HJ Production Zone. The confining characteristics of this unit have been demonstrated through pumping tests, as described in later sections of this application.

UKM Sand

The UKM Sand is present beneath the Sage Brush Shale. The UKM Sand is the upper member of the KM Horizon and is generally a massive coarse sandstone with lenticular fine sandstone intervals. The UKM Sand is the underlying aquifer to the HJ Horizon but is also a potential production zone within the Permit Area. The UKM Sand is typically 30 to 60 feet thick but can reach over 75 feet in thickness (**Figure D6-10**). The top of the UKM Sand is usually between 450 and 600 ft bgs within the Permit Area. The decision to proceed with a permit revision for production of the UKM Sand will depend on the results of additional delineation drilling and characterization of the lower confining unit and underlying aquifer that are described below.

No Name Shale

The No Name Shale at the base of the UKM Sand has not yet been fully characterized. The top of the unit is approximately 480 to 650 ft bgs. This unit is generally ten to 30 feet thick. This shale would be the lower confining unit to the UKM Sand, if LC ISR,

LLC decides to request a permit revision to include the UKM Sand in the Lost Creek Project. Additional drilling is being conducted. The pump test in the fall of 2007 provided additional information on the confining characteristics of this unit, and if LC ISR, LLC proceeds with a revision for production of the UKM Sand, this data will be included in the revision.

MKM Sand

The MKM Sand is the underlying aquifer to the UKM Sand. Information on the MKM Sand is limited at this time. Additional borings are being drilled to evaluate the geologic and hydrologic characteristics of this sand. The pump test in the fall of 2007 provided additional information on the hydrologic relationship between the UKM and MKM Sands in the fall of 2007.

D6.2.2.2 Potentiometric Surface, Groundwater Flow Direction and Hydraulic Gradient

The LC ISR, LLC hydrologic evaluation of the Project included measurement of water levels in monitor wells completed in the HJ aquifer, the overlying aquifers (DE and LFG) and the underlying aquifer (UKM) to assess the potentiometric surface, groundwater flow direction and hydraulic gradient of those units. Additional historic water level data were available from the Conoco hydrologic evaluation of the site (Hydro-Search Inc., 1982). **Table D6-6** lists static water level data recorded in 1982, 2006 and 2007.

The potentiometric surface for the HJ Horizon is shown on **Figure D6-11a**. The water level data were collected in November 2007 well after the completion of all drilling and pump test activity. Water levels from this period represent the most comprehensive data set available under static conditions for the permit area. From the figure, it is evident that the Fault provides a significant hydraulic barrier to groundwater flow. The potentiometric surface on the north side of the Fault is five to 15 feet higher than on the south side. Wells located approximately 100 feet apart on either side of the Fault (Wells HJT104 and HJMP107) show a difference of 13.6 feet with the higher elevation on the north side of the Fault. The difference in hydraulic head across the Fault becomes less to the northeast. The steep gradient observed in the potentiometric surface from the north to the south side of the Fault is most likely a manifestation of a lower permeability transition area associated with a fault smear zone and/or secondary faulting and fracturing near the Fault. This is consistent with regional groundwater flow impacted by lower permeability zones studied and modeled by Freeze (1969). Although limited groundwater leakage occurs across the Fault (as demonstrated during the long term pump tests that are described later in this report), the majority of groundwater flow on both sides of the Fault appears to be generally parallel to the Fault, to the west-southwest.

Based on the potentiometric surface map, groundwater is inferred to flow to the west-southwest, generally consistent with the regional flow system.

Potentiometric surface data for the overlying (LFG) aquifer for November 2007 is shown on **Figure D6-11b**. The data indicate a similar groundwater flow direction as in the HJ aquifer (toward the west-southwest). The barrier effect of the Fault is also evident within this shallower hydrostratigraphic unit with an observed difference of six to eight feet of hydraulic head across the Fault.

Potentiometric surface data for the underlying (UKM) aquifer for November 2007 is shown on **Figure D6-11c**. The data for this deeper horizon also indicate a generally west-southwest direction of groundwater flow. However, the impacts of the Fault are not as evident in this hydrostratigraphic unit, with little if any difference in hydraulic head across the fault.

HJ Horizon water level data from 1982 and 2006 are shown on **Figure D6-11d**. There are an insufficient number of data points to accurately represent the potentiometric surface for those measurement periods. However, the data illustrate the difference in water levels within the HJ Horizon across the Fault.

The horizontal hydraulic gradient for the HJ aquifer, determined from water level data from 1982, 2006 and 2007, ranged from 0.0034 to 0.0056 ft/ft (18.0 to 29.6 ft/mi). **Table D6-7a** summarizes the hydraulic gradients determined from the water level data.

Horizontal hydraulic gradients for the LFG aquifer range from 0.0046 to 0.0058 ft/ft (24.3 to 30.6 ft/mi) (**Table D6-7a**). Horizontal hydraulic gradients calculated for the UKM aquifer from available water level data ranged from 0.0038 to 0.0063 ft/ft (20.1 to 33.3 ft/mi) (**Table D6-7a**). The average hydraulic gradient within the HJ, LFG and UKM aquifers is approximately 0.005 ft/ft (26.4 ft/mi).

The horizontal hydraulic gradient calculated from the two wells completed in the DE aquifer on the south side of the Fault was 0.0064 ft/ft (33.0 ft/mi) (**Table D6-7a**).

Vertical hydraulic gradients were determined by measuring water levels in closely grouped wells completed in different hydrostratigraphic units. **Figure D6-12** shows the location of the well groups used for the assessment of vertical hydraulic gradients. **Table D6-7b** summarizes the calculated vertical gradients between the DE, LFG, HJ and UKM aquifers. Vertical hydraulic gradients range from 0.05 to 0.37 ft/ft between the LFG, HJ and UKM aquifers and consistently indicate decreasing hydraulic head with depth. The vertical gradient between the DE and LFG aquifers is minimal in the two places measured. This is consistent with earlier observations that the DE and LFG sands coalesce in places within the Permit Area. Of the six well groups evaluated, the only

place where a downward potential is not evident is between the DE and LFG aquifers in the southwest portion of the Permit Area. The vertical gradients indicate the potential for groundwater flow is downward. A downward potential is indicative of an area of recharge, as opposed to an upward potential that is normally indicative of an area of groundwater discharge. A downward gradient is consistent with the structural and stratigraphic location of the Project with regard to Great Divide Basin.

D6.2.2.3 Aquifer Properties

Aquifer properties for the Battle Spring aquifers within the Permit Area have been estimated from historic and recent pump tests. Transmissivity, storativity, and hydraulic conductivity were evaluated from short term and long term pump tests. Description of the results and analyses of the pump tests are provided below.

1982 Pump Tests

Hydro-Search Inc. performed a hydrologic evaluation in 1982 to determine the feasibility of in situ production of the Conoco uranium orebody at Lost Creek. Hydro-Search Inc conducted two 25-hour tests within the HJ Horizon. Both pump tests were conducted at a rate of 30 gpm and on the south side of the Fault. The locations of the pumping wells and monitor wells are shown in **Figure D6-13**. The results of the tests were variable, with one test indicating a transmissivity of approximately 95 ft²/d (700 gallons per day per foot [gpd/ft]) and the other indicating a value of 270 ft²/d (2,000 gpd/ft). The storativity calculated from the first test averaged 5×10^{-4} . There was no reported response in the HJ aquifer north of the Fault. Monitor wells in the overlying (LFG) and underlying (UKM) aquifers did not show any effects from the pump test as reported by Hydro-Search Inc. (1982). Results of the pump tests are summarized in **Table D6-8**.

2006 Pump Tests

Hydro-Engineering, Inc. (2007) conducted several short-term single well pump tests and three longer multi-well pump tests in October 2006. The single well tests ranged from 30 minutes to five hours in duration at rates from 0.67 to 14 gpm. The long-term tests were from 20 to 45 hours long at rates of 15 to 19 gpm. Each of the long-term tests was conducted in HJ well completions. The locations of the wells included in the pump test program are shown on **Figure D6-13**. Results of the pump test are summarized in **Table D6-8**.

The range of transmissivity calculated by Hydro-Engineering for the HJ aquifer was from 44 to 400 ft²/d (330 to 3,000 gpd/ft). None of the HJ tests indicated significant communication with the overlying or underlying aquifers. There was also no indication

of hydraulic communication across the Fault in any of the pump tests. Hydro-Engineering concluded that the Fault acts as a hydraulic barrier (2007).

The Hydro-Engineering data suggest that the transmissivity of the LFG aquifer, calculated from four tested wells, was generally much lower than the values estimated for the HJ aquifer. The range of transmissivity for the LFG aquifer was 4.4 to 40 ft²/d (33 to 303 gpd/ft). Transmissivity for the UKM aquifer, estimated from single well tests at four wells, was similar to but lower than the HJ aquifer, ranging from 26 to 115 ft²/d (195 to 858 gpd/ft). Three DE well completions were tested, with resulting transmissivity of 1.3 to 130 ft²/d (10 to 1,000 gpd/ft).

2007 Pump Tests

Between June to November 2007, two long-term pump tests were conducted by Petrotek Engineering Corp. in the HJ aquifer at Wells LC19M and LC16M (**Attachments D6-2a** and **D6-2b**). Both wells had been previously tested by Hydro-Engineering (2007). LC19M is located on the north side of the Fault and LC16M is located south of the Fault. The objectives of the tests were to further develop aquifer characteristics of the HJ Horizon, to evaluate the hydraulic impacts of the Fault, and to demonstrate confinement of the production zone (HJ Horizon) aquifer. HJ monitor wells on both sides of the Fault and within distances likely to be impacted by the pump tests were included as observation wells. Observation wells in the overlying (LFG) and underlying (UKM) aquifers near the pumping wells and across the Fault were also monitored during the tests. **Tables D6-9a** and **D6-9b** list the data for monitor wells included in the LC19M and LC16M pump tests, respectively. **Figures D6-14a** and **D6-14b** include the locations of the pumping wells and all observation wells included in the LC19M and LC16M tests, respectively. Pre-pumping monitoring was performed several days in advance of the tests to establish baseline conditions and to evaluate barometric effects.

The first pump test was conducted using Well LC19M to evaluate aquifer properties on the north side of the Fault. A step-rate test was performed on pumping Well LC19M June 23, 2007 to determine a suitable pumping rate for the long-term test. The long-term test for LC19M was started at 17:20 hours on June 27, 2007 and was terminated on July 3, 2007 at 10:51 hours. The total duration of the test was 5.7 days (8,251 minutes). The average pumping rate during the test was 42.9 gpm. Maximum drawdown in the pumping well was 93.3 feet. Monitoring was continued after pump shut-in to record recovery from the LC19M test.

The transmissivity calculated from five wells completed in the HJ aquifer on the north side of the Fault (including the pumping well LC19M) were similar, ranging from 30.0 to 75.5 ft²/d and averaging 68.3 ft²/d. The average hydraulic conductivity calculated for the five wells, assuming an aquifer thickness of 120 feet, was 0.57 ft/d. Storativity calculated

from those wells (with the exception of the pumping well) ranged from 6.6×10^{-5} to 1.5×10^{-4} and averaged 1.1×10^{-4} . **Table D6-10a** summarizes the analyses of the LC19M pump test. Drawdown at the end of the test in the HJ aquifer is shown on **Figure D6-15**.

Minor responses were observed across the Fault during the LC19M pump test (e.g., approximately 0.3 to 0.7 feet of drawdown in Well HJMP107 and other wells south of the Fault). Responses in observation wells across the Fault were negligible relative to the magnitude of drawdown observed in monitor wells located on the same side of the Fault as the pumping well. The impact of the Fault on groundwater flow can be clearly seen from the responses recorded in a pair of observation wells that were placed on either side of the Fault, within 100 feet of each other. Well HJT104, located on the north side of the Fault and completed in the HJ Horizon, had a maximum drawdown of 40.5 feet at the end of the LC19M test. Well HJMP107 (south of the Fault) in the HJ Horizon had a net decrease of 1.4 feet from the beginning of the test to the end of pumping at LC19M. At least a portion of that change is attributable to a declining trend in water levels that was observed in all monitor wells prior to the start of the test. The reason for the background trend observed has not been identified; however, it might be a result of offset pumping (e.g., LC ISR, LLC's first two water supply wells that are screened over multiple sands).

At the beginning of the LC19M test, the water level at HJT104 was at 6,770.68 feet above mean sea level (ft amsl) and the water level at HJMP107 was at 6,754.85 ft amsl, a head difference of almost 15 feet with the higher head north of the Fault. At the end of the pump test the water levels for HJT104 and HJMP107 were 6,730.14 ft amsl and 6753.47 ft amsl, respectively. At the termination of pumping at LC19M, the water level difference between HJT104 and HJMP107 was 23 feet with the higher head south of the Fault. Minor responses to pumping were observed across the Fault during the LC19M test. Based on the pump test results, the Fault, while not entirely sealing, significantly impedes groundwater flow, even under considerable hydraulic stress.

The response of the overlying and underlying aquifers during the LC19M pump test was small (e.g., on the order of 0.2 to 0.5 feet); but the water level responses did correspond to the start and stop of pumping from LC19M in the HJ Horizon. The underlying/overlying responses appear to be relatively consistent, regardless of distance from the pumping well, the hydrostratigraphic interval monitored, or the location relative to the Fault. These water level changes suggest potential impacts from off-site pumping or background trends that, because of distance from the monitor wells, are manifested at multiple locations at the same or similar times. As previously stated, a declining trend in water level elevations was observed prior to the start of the test. Most of the wells showed an initial inverted response (increase in water level) at the start of the test and then resumed a gradual downward trend during the test. This phenomenon was also observed and noted by Hydro-Engineering during the 2006 pump tests. It is possible that some of the drawdown response could be caused by: (1) pumping in the drilling water

well (LC1) which is completed in both the DE and FG Horizons; (2) communication across multiple sands due to the scissors nature of the Fault distant from the pumping well location; (3) communication due to juxtapositioning of hydrostratigraphic units across the fault; or (4) leakage through the confining shale, or any combination of these. While LC ISR, LLC has aggressively pursued re-plugging of historic wells, it is also possible that some of the communication could be related to abandoned wells. Additional discussion regarding the results of the testing are included in **Attachment D6-2a**.

A second long term pump test was conducted to evaluate aquifer properties on the south side of the Fault using LC16M as the pumping well. A step-rate test was performed on pumping well LC16M October 7, 2007 to determine a suitable pumping rate for the long-term test. The long-term test for LC16M was started at 14:10 hours on October 22, 2007 and was terminated on October 28, 2007 at 01:00 hours when the generator used in the test failed. However, the HJ aquifer had been sufficiently stressed at that point and the pumping portion of the test was terminated. The total duration of the test was 5.5 days (7,850 minutes). The average pumping rate during the test was 37.4 gpm. Maximum drawdown in the pumping well was 69.3 feet. Monitoring was continued after pump shut-in to record recovery from the LC16M test.

The transmissivity calculated from six wells completed in the HJ aquifer on the south side of the Fault (including the pumping well LC16M) were similar, ranging from 56.7 to 110.0 ft²/d and averaging 77.7 ft²/d. The average hydraulic conductivity calculated for the six wells, assuming an aquifer thickness of 120 feet, was 0.65 ft/d. Storativity calculated from four of the monitoring wells ranged from 3.5×10^{-5} to 1.4×10^{-4} and averaged 7.3×10^{-5} . Well HJT105 had a calculated storativity of 9.1×10^{-5} which appears anomalously high and was not included in the average. Storativity was not, nor could be, calculated from the pumping well. **Table D6-10b** summarizes the analyses of the LC16M pump test. Drawdown near the end of the test in the HJ aquifer is shown on **Figure D6-16**.

The drawdown resulting from pumping LC16M shows a cone of depression developed around the pumping well that is elongated roughly parallel to the Fault (**Figure D6-16**). There is also drawdown within the HJ aquifer north of the fault, although it is relatively minor. The same wells located about 100 feet apart and across the fault from one another, Wells HJMP107 and HJT104, that were evaluated during the LC19M test were evaluated during the LQ16M test. Well HJMP107, located on the same side of the Fault as the pumping well, had nearly 25 feet of drawdown near the end of the test. Well HJT104, located approximately 100 feet north of Well HJMP107 and north of the Fault, had approximately 2.2 feet of drawdown at the end of pumping. The data from the LC16M pump test appear consistent with the LC19M pump test, showing that the Fault, while not impermeable, is a significant barrier to groundwater flow.

As in the LC19M pump test, the response of the overlying and underlying aquifers during the LC16M pump test was small (e.g., less than one foot in the LFG and less than two feet in the UKM); but the water level responses were coincident with the start and stop of pumping from LC16M (**Figure D6-16**). The response was slightly more pronounced in the UKM and occurred on both sides of the fault. There were no observation points in the LFG aquifer across the Fault in the LC16M test. Similar to the LC19M pump test, results from the LC16M test indicate limited hydraulic communication between the HJ aquifer and the overlying LFG and underlying UKM aquifers. Additional discussion regarding the results of the testing are included in **Attachment D6-2b**.

As previously described, hydraulic communication between the HJ aquifer and overlying and underlying aquifers may be through historic boreholes that were improperly abandoned and have not yet been located, leakage through the confining shale units, or contact of sands juxtaposed across the Fault. Additional investigation will be completed prior to production of any mine units to isolate the cause of hydraulic communication between the production zone aquifer and the overlying and underlying aquifers.

It should be noted that although some minor hydraulic communication exists between the hydrostratigraphic units of interest, the hydraulic response only becomes apparent when large stresses (head differences) are applied to the aquifers. Under normal ISR production operations and those proposed for this project, flows are generally balanced so that a net bleed of approximately one percent is maintained within a mine unit/well pattern. Those typical operating conditions will not stress the aquifers to the extent of the recently completed pump tests. Therefore, it is anticipated that any hydraulic response in the overlying and underlying aquifers will be even less than the already negligible responses observed during the LC19M and LC16M pump test.

Detailed mine unit pump tests will be conducted during development of each future mine unit. As such, additional investigations will be performed to assess the background trends observed, characteristics of the Fault and potential communication between the sands monitored for the 2007 test. Based on testing results to date, it is anticipated that any minor communication between the HJ Horizon and the overlying and underlying sands can be managed through operational practices, detailed monitoring, and engineering operations. In this regard, the potential communication observed at Lost Creek is much lower (e.g., five to ten times less) than has been observed in other ISR operations where engineering practices were successfully implemented to isolate lixiviant from overlying and underlying aquifers. **Figure D6-17** summarizes the results of the Hydro-Search, Inc. (1982), Hydro-Engineering (2007), and Petrotek Engineering Corporation pump test results (**Attachments D6-2a** and **D6-2b**). **Table D6-11** summarizes the aquifer characteristics calculated from the pump test data and related field observations.

The 2007 pump test data support the following conclusions:

- the pump test results provide sufficient aquifer characterization of the HJ Horizon;
- the HJ Horizon has sufficient transmissivity such that mining operations can be conducted consistent with the Operations Plan (see Operations Plan contained with this application);
- the HJ Horizon is sufficiently isolated from the overlying and underlying sands by the Lost Creek and Sage Brush Shales;
- hydraulic continuity of the HJ Horizon has been demonstrated over a large scale (e.g., more than 1,000 feet) such that mine planning (e.g., mine unit and monitor well layout) can proceed;
- the hydraulic properties of the Fault have been defined over the test area to an extent such that mine planning can be achieved; and
- test data indicate that the Fault significantly restricts flow in the HJ Horizon.

D6.3 Groundwater Use

Groundwater permits with legal descriptions inside and within three miles of the Permit Area were queried using the WSEO Water Rights Database (WSEO, 2006). **Tables D6-12a** and **D6-12b** list the permits, including potentially active permits as well as abandoned and cancelled permits, which were issued by WSEO to parties other than LC ISR, LLC or its affiliates. The permit information includes, but is not limited to, location, uses, priority dates, status, yield, total depth, and static water depth. **Table D6-12a** lists permits within one-half mile of the Permit Area; this table correlates with **Plate D6-1a**. **Table D6-12b** lists permits within three miles of the Permit Area; these locations are shown on **Plate D6-1b**.

The majority of the groundwater-use permits filed in the vicinity of the Permit Area is for monitoring or miscellaneous mining-related purposes. Many of those permits are associated with the Kennecott Sweetwater Mine (formerly owned by Minerals Exploration Co.), which is in reclamation. This mine was an open-pit operation, and a number of the permits were for the dewatering and monitoring wells associated with the open pit. These wells were at shallower depths than those proposed for ISR at Lost Creek. Construction of the mine began in 1979, and dewatering in advance of mining was completed in 1983. A number of the permits are for monitoring and remediation of the tailings impoundment at the Sweetwater Mill, adjacent to the mine; and the more recent permits are for monitoring associated with surface facilities at the mine.

Table D6-13 is a list of the permits issued by the WSEO to LC ISR, LLC or its affiliates (Ur-E and NFU Wyoming, LLC). At this time, there are three water supply wells and 75 monitor wells permitted and bonded by WDEQ to LC ISR, LLC and its affiliates. Installation of these wells is on-going, and locations of wells currently used for water quality sampling, pump tests, and water supply are shown on figures which are discussed in other sections of **Appendix D6**. Currently, the Project consumes a negligible amount of groundwater for well development, monitoring, testing, and miscellaneous purposes related to uranium exploration. Projected water use once ISR begins and the impacts of that use are discussed in the Operations Plan included with this application.

The groundwater permits within one mile unrelated to mining are those of the BLM. In 1968 and 1980, the BLM Rawlins District was granted three permits by the WSEO (13834, 55112, and 55113). Each of these permits is associated with a well that supplies a stock pond (or tank). These wells and associated stock ponds are located outside of the Permit Area (**Figure D6-18**). In addition, there is a fourth BLM well, supplying a stock pond, for which no water-use permit was found. The permit numbers and names of these four BLM wells are:

SEO Permit 13834 - Battle Spring Draw Well No. 4451;
SEO Permit 55112 - Boundary Well No. 4775;
SEO Permit 55113 - Battle Spring Well No. 4777; and
No SEO Permit - East Eagle Nest Draw Well.

Battle Spring Draw Well No. 4451, which pumps water into a stock tank east of the Permit Area (Township 25 North, Range 92 West, Section 21, NW $\frac{1}{4}$, NE $\frac{1}{4}$, NE $\frac{1}{4}$). In 1968, a uranium exploration hole was drilled at this location; when water was encountered, plastic casing was installed and the well was developed. The well depth is 900 feet, with a static water level of 104 feet. A yield of 19 gallons per minute is permitted. The screened interval is unknown, but given the well depth, it may be significantly deeper than the sands targeted by LC ISR, LLC under this permit. This well does not appear to have been used in some time (**Figure D6-19**).

Boundary Well No. 4775 and Battle Spring Well No. 4777 were drilled as stock wells in 1981 to a depth of approximately 280 feet and 220 feet, respectively. These wells are shallower than the sands targeted by LC ISR, LLC under this permit. A water use of 25 gpm is permitted at each of these wells. According to aerial photographs, Boundary Well No. 4775 is located northeast of the Permit Area, in Township 25 North, Range 92 West, Section 10, SE $\frac{1}{4}$, NE $\frac{1}{4}$, SW $\frac{1}{4}$. Battle Spring Well No. 4777 is situated southeast of the Permit Area, in Township 25 North, Range 92 West, Section 30, SE $\frac{1}{4}$, NW $\frac{1}{4}$. Boundary Well No. 4775 has apparently not been used in some time (**Figure D6-20**), and the windmill on the Battle Spring Well No. 4777 was not in working order in June 2007 (**Figure D6-21**).

In June and July of 2007, LC ISR, LLC contacted BLM to identify the status of these groundwater-use permits. These groundwater-use permits are still considered active (BLM, 2007a). In addition to these wells, BLM identified another active stock well, the East Eagle Nest Draw Well.

The East Eagle Nest Draw Well is located north of the Permit Area, in the NW¼, NW¼, NW¼ of Section 13, Township 25 North and Range 93 West. From mid-May through mid-September, an electric submersible pump in the well is used to pump water into a livestock watering pond at an average rate of five gallons per minute for six to eight hours each day (**Figure D6-22**). The total depth of this well is 370 feet, with a static water level of 269 feet.

Throughout the phases of the Project, LC ISR, LLC will correspond with BLM to ensure that the stock reservoirs and wells are not impacted in a manner that restricts the intended use.

D6.4 Groundwater Quality

This section describes the regional and local groundwater quality based on information from investigations performed within the Great Divide Basin, data presented in previous applications/reports for the Permit Area, and recent data collected in the Permit Area.

D6.4.1 Regional Groundwater Quality

Water quality within the Great Divide Basin ranges from very poor to excellent. Groundwater in the near surface, more permeable aquifers is generally of better quality than groundwater in deeper and less permeable aquifers. Groundwater with TDS less than 3,000 mg/L can generally be found at depths less than 1,500 feet within the Tertiary aquifer system, which includes the Battle Spring/Wasatch, Fort Union and Lance aquifers (Collentine et al., 1981).

Water quality for the Great Divide Basin is available from a large number of sources including the USGS National Water Information System (NWIS) database, the University of Wyoming Water Resources Data System (WRDS) and the USGS Produced Waters Database. Much of these data are tabulated in "Water Resources of Sweetwater County, Wyoming", a USGS Scientific Investigation Report by Mason and Miller (2005). However the quality and accuracy of much of the data are difficult to assess. This section of the permit application describes general water quality of the Great Divide Basin, primarily by reference to these sources.

Mason and Miller (2005) noted that water quality in Sweetwater County is highly variable within even a single hydrogeologic unit; and that water quality tends to be better near outcrop areas, where recharge occurs. They also noted that groundwater quality samples from the Quaternary and Tertiary aquifers are most likely biased toward better water quality and do not necessarily represent a random sampling, for the following reasons. Wells and springs that do not produce useable water usually are abandoned or not developed. Deeper portions of the aquifers typically are not exploited as a groundwater resource because a shallower water supply may be available. As a result, these water sources do not become part of the sampled network of wells and springs that ultimately make up the available groundwater database. Groundwater quality samples from deeper Mesozoic and Paleozoic hydrostratigraphic units are often available where oil and gas production or exploration has occurred. Therefore, groundwater samples from older geologic units may have less bias in representing ambient groundwater quality than samples collected from Quaternary and Tertiary aquifers.

Water quality within the shallow Tertiary aquifers generally represents sodium-bicarbonate to sodium-sulfate water types. TDS levels within the Wasatch aquifer in the west and south parts of the Great Divide Basin tend to be high relative to the U.S. EPA's Secondary Drinking Water Standard (SDWS) of 500 mg/L, even within the shallow aquifers. TDS levels within the Battle Spring/Wasatch aquifers are generally below 500 mg/L along the northern flank of the Great Divide Basin (which includes the Permit Area). Elevated TDS levels (greater than 3,000 mg/L) are present within the Wasatch aquifer along the eastern edge of the Washakie Basin and within the Fort Union and Lance aquifers along the east side of the Rock Springs uplift. Elsewhere within the Great Divide and Washakie Basins, TDS levels in the Tertiary aquifer system are typically between 1,000 and 3,000 mg/L (Collentine et al., 1981).

Low-TDS waters within the Battle Spring aquifer are predominately sodium-bicarbonate type waters. With increasing salinity, the water type tends to become more calcium-sulfate dominated. However, this trend is not exhibited in the Wasatch, Fort Union and Lance aquifers within the Great Divide and Washakie Basins. The Wasatch and Lance aquifers are characterized by predominately sodium-sulfate type waters, particularly near outcrop areas. The Fort Union is more variable in composition.

Water quality data for Tertiary aquifers away from the outcrop areas are sparse, but available data indicate that TDS levels increase rapidly away from the basin margins. Water samples collected from a Lance pump test in Section 14, Township 23 North, Range 99 West had reported TDS levels in excess of 35,000 mg/L. A Fort Union test in Section 25, Township 13 North, Range 95 West had TDS levels in excess of 60,000 mg/L, based on resistivity logs (Collentine et al., 1981). Water quality samples from produced water in the Wasatch and Fort Union Formations from an average depth of

3,500 feet had TDS values ranging from 1,050 to 153,000 mg/L with a median value of 13,900 mg/L (Mason and Miller, 2005). TDS from four wells completed in the Fort Union Formation located along the margins of the basin ranged from 800 to 3,400 mg/L (Welder and McGreevy, 1966).

A graph of TDS versus sampling depth for produced water samples from the Wasatch Formation in Sweetwater County prepared by Mason and Miller (2005) shows that at depths greater than 3,000 feet, TDS values are typically above 10,000 mg/L. It is noted that the Mason and Miller data set is small for a large area and may be biased by data from the southern part of the Great Divide Basin; few site-specific data directly applicable to the Project are available.

Water quality within the Battle Spring aquifer is generally good in the northeast portion of the basin with TDS levels usually less than 1,000 mg/L and frequently less than 200 mg/L. Water type within the Battle Spring aquifer is typically sodium bicarbonate to sodium sulfate. Mason and Miller (2005) reviewed eighteen groundwater samples collected from the Battle Spring aquifer and observed that those samples represented some of the best overall quality of those studied in Sweetwater County. Sulfate levels can be elevated in Tertiary aquifers, but are generally low in the shallow aquifers of the Battle Spring Formation. Out of 18 samples included in the Mason and Miller (2005) study, only one sample exceeded the WDEQ Class I Drinking Water Standard for sulfate of 250 mg/L. Most of the samples were also below the WDEQ TDS Class I Drinking Water Standard of 500 mg/L. Nitrate, fluoride and arsenic levels were below WDEQ and EPA standards for all of the samples.

Notable exceptions to the relatively good water quality included waters with elevated radionuclides. Uranium and radium-226 (Ra-226) concentrations exceeded their respective EPA Maximum Contaminant Levels (MCLs) of 0.03 mg/L and 5 pCi/L in some of the samples; radon-222 (Rn-222) concentrations were also relatively high in some samples (Mason and Miller, 2005). The presence of high levels of uranium in Tertiary sediments and groundwater of the Great Divide Basin has been well documented. The Lost Creek Shroeckingerite deposit located northwest of the Permit Area is noted for high uranium levels in groundwater. Uranium-bearing coals are also present in Great Divide Basin. Sediments of the Battle Spring Formation were derived from the Granite Mountains and contain from 0.0005 to 0.001 percent uranium (Masursky, 1962). Based on historical exploration results, certain areas of the Battle Spring Formation (e.g., Lost Creek) contain much higher uranium concentrations.

Water quality for aquifer systems deeper than the Tertiary (such as the Mesaverde aquifer system) are not described in this report; because they are several thousands of feet deep in the vicinity of the Project and are separated from the Tertiary aquifer system by the

Lewis Shale, a regional aquitard. The deeper aquifer systems of the Great Divide Basin will not impact nor be impacted by ISR activities at the Project.

D6.4.2 Site Groundwater Quality

Information regarding site water quality is primarily derived from reconnaissance studies conducted by Conoco (Hydro-Search, Inc., 1982) and ongoing exploration and delineation of the Project by LC ISR, LLC.

D6.4.2.1 Groundwater Monitoring Network and Parameters

Conoco installed 12 wells, separated into four groups, to evaluate aquifer properties and water quality of the uranium ore-bearing sands and overlying and underlying aquifers within the Permit Area. Three of the groups included wells completed within the HJ Horizon aquifer and the overlying (LFG) and underlying (UKM) aquifers. The fourth group included three wells completed within the HJ Horizon aquifer. The location of the wells is shown on **Figure D6-23**. The Conoco wells were sampled for the parameters listed in **Table D6-14**. These 12 wells were installed as part of a joint venture between Conoco and Texasgulf Inc. The wells, permit numbers P61528W thru P61539W, are shown in **Table D6-12a** as being drilled by Texasgulf Inc. Each of the twelve wells was abandoned as documented in a September 16, 1987 letter from Texasgulf Inc. to the State Engineer's office (**Attachment D5-3**).

LC ISR, LLC installed wells in 2006 completed in the DE, LFG, HJ and UKM aquifers and initiated baseline sampling for the same constituents as Conoco, with the addition of alkalinity (as calcium carbonate [CaCO₃]), gross alpha, gross beta and radium-228. Four quarters of sampling have been completed for several of the wells that were installed in 2006. Additional wells have been installed in 2007 and are being incorporated into the groundwater monitoring network. The locations of the LC ISR, LLC monitor wells that have been sampled for water quality are indicated on **Figure D6-24**.

In addition to the wells discussed above, per WDEQ-LQD's request, LC ISR, LLC installed ten additional monitor wells to further characterize the regional geochemistry of the potentially effected aquifers. The locations of these wells, designated with an MB prefix, are also shown on **Figure D6-24**.

D6.4.2.2 Groundwater Quality Sampling Results

Historic Results

Ten of the 12 monitor wells installed by Conoco were sampled in August 1982. Hydro-Search, Inc. reported that there were no major differences in water quality between the HJ Horizon aquifer and the overlying and underlying aquifers (1982). The predominant ions were calcium and sulfate. TDS values were all below the WDEQ Class I Standard of 500, ranging from 200 to 490 mg/L (**Figure D6-25a**). The pH of the waters ranged from 7.1 to 8.5, indicating slightly alkaline conditions. Chloride levels were very low, ranging from seven to 18 mg/L.

One of the sampled wells had an obstruction in the well and elevated pH (11.1) and potassium (54 mg/L) values. It was determined that the sampling results from that well were not representative of the site aquifers and that the well was possibly contaminated with cement.

Most trace constituents were below the detection limits. Selenium was present in two samples at 0.023 mg/L, which was above the WDEQ and EPA drinking water standards at that time (0.01 mg/l). The WDEQ Class I Standard and the EPA MCL are currently 0.05 mg/L. Radium-226 was detected in all of the samples, with a range of 2.5 to 300 pCi/L. Only two samples, one collected from the overlying aquifer and one from the underlying aquifer, were below the WDEQ Class I Standard and EPA MCL for radium-226 (5.0 pCi/L). **Figure D6-25b** depicts the distribution of Ra-226 from the 1982 sampling round. Elevated Ra-226 groundwater concentrations are common within and around uranium orebodies. Uranium levels ranged from below detection (less than 0.005 mg/L) to 0.48 mg/L. Six of the ten samples exceeded the current EPA MCL for uranium (0.03 mg/L) (**Figure D6-25c**).

Baseline Sampling

LC ISR, LLC began baseline sampling in September 2006. The baseline sampling round included the following seventeen locations:

- DE Monitor Wells: LC29M, LC30M and LC31M
- LFG Monitor Wells: LC15M, LC18M, LC21M, and LC25M
- HJ Monitor Wells: LC16M, LC19M, LC22M, LC26M; and
- UKM Monitor Wells: LC17M, LC20M, LC23M, LC27M, LC28M, and LC24M.

The second sampling round was conducted in November 2006. The third sampling round was conducted in February and March 2007. The fourth sampling round was conducted in May 2007. All 17 of the wells listed above were included in each sampling event (**Figure D6-26a**). In addition to the baseline sampling program, LC ISR, LLC has also

sampled two of the water supply wells, LC1 and LC2. Ten additional baseline monitoring wells were drilled and installed in the fall of 2008 to provide more extensive coverage of the entire permit area. Those wells will be sampled four times each for the same constituents as the initial baseline wells (listed in **Table D6-14**).

Results of the LC ISR, LLC baseline monitoring program are summarized in **Table D6-15a**. The raw laboratory data are presented in **Attachment D6-4**. In **Table D6-15a**, those analytical results which exceed specific WDEQ WQD or EPA criteria are highlighted, and the WQD and EPA criteria used for the comparison are included in **Table D6-15b**. The table shows that the WDEQ TDS Class I standard is exceeded at one well in each of the DE, HJ and UKM aquifers, Wells LC31M, LC26M, and LC23M, respectively. Fourteen out of the 17 wells have TDS levels below the Class I Standard. The distribution of TDS (averaged from the four sampling events) is shown in **Figure D6-26a**. Sulfate exceeds the WDEQ Class I Standard (250 mg/L) in one DE monitor well (LC31M) and one HJ monitor well (LC26M). The distribution of sulfate, averaged from September 2006 to May 2007, is shown in **Figure D6-26b**. As with the Conoco monitoring results, chloride values are low with all but one sample at ten mg/L or lower (**Table D6-15a**).

Piper diagrams have been developed to compare groundwater quality between individual wells (**Figure D6-27a**) and between different aquifers (**Figure D6-27b**). The individual well comparison plots the average value for each of the wells for all of the samples analyzed. The piper diagram comparing different aquifers represents the average water quality for all wells sampled within individual aquifers (DE, LFG, HJ and UKM). Groundwater within the shallow Battle Springs aquifers beneath the Permit Area is a calcium sulfate to calcium bicarbonate type water. There is some variability in water chemistry when the wells are compared individually.

The trace constituents, boron, cadmium, chromium, copper, mercury, molybdenum, nickel, vanadium, and zinc were at or below detection limits for all samples. Ammonia exceeded the WDEQ Class I Standard (0.5 mg/l) in one DE monitor well (LC29M) and one UKM monitor well (LC23M). Selenium exceeded the WDEQ Class I Standard and EPA MCL (0.05 mg/L) in one DE monitor well (LC31M). Iron exceeded the WDEQ Class I Standard and EPA MCL (0.3 mg/L) in one DE monitor well (LC29M), two LFG monitor wells (LC18M and LC21M) and one UKM monitor well (LC24M). Manganese was above the WDEQ Class I Standard and EPA MCL (0.05 mg/L) in seven of the 12 samples collected from DE monitor wells but did not exceed those standards in any other sampled aquifer.

With the exception of UKM monitor wells LC27M and LC28M, every uranium analysis exceeded the EPA MCL of (0.03 mg/L). The average uranium concentration of all samples collected in the baseline monitoring program (0.296 mg/L) is over an order of

magnitude greater than the MCL. The average distribution of uranium at individual wells from September 2006 to May 2007 is shown on Figure D6-28a.

The average distribution of radium-226+228 is shown on Figure D6-28b. The WDEQ Class I Standard and EPA MCL for radium-226+228 is 5.0 pCi/L. Table D6-16 summarizes the number of wells in each aquifer that exceed the EPA MCL.

A summary of the water quality for each of the four hydrostratigraphic units of interest (DE, LFG, HJ and UKM) is presented below. All metal concentrations are reported as dissolved.

DE Sand Water Quality

Three wells completed in the DE Sand were included in the baseline sampling program (LC29M, LC30M and LC31M). An additional three DE monitor wells (MB-1, MB-7 and MB-10) have been installed and will be sampled in 2009. The results of the newer sampling will be reported in an updated groundwater baseline sampling summary report. Sample results from the existing baseline monitor wells are included in Table D6-15a.

Results of the baseline sampling indicate that two of the DE monitor wells (LC29M and LC30M) are calcium bicarbonate water, whereas the third is a calcium sulfate type (LC31M). Both sulfate and TDS levels in LC31M exceed the WDEQ Class I Standards (250 mg/l and 500 mg/l, respectively). Chloride levels in all three wells are low (10 mg/l or less).

Manganese exceeded the WDEQ Class I Standard (0.05 mg/L) in seven of the 12 samples collected from DE monitor wells. The average manganese value was 0.10 mg/l for the DE monitor wells. The average selenium concentration at well LC31M was 0.172 mg/l, exceeding the WDEQ Class I Standard of 0.05 mg/l.

Iron exceeded the WDEQ Class I Standard (0.3 mg/L) in two of the four samples from one DE monitor well (LC29M). The average value for the four samples from LC29M was below the standard. Similarly the average ammonia concentration was below the WDEQ Class I Standard (0.5 mg/l) at well LC29M, although two of the four samples exceeded the standard.

Uranium levels exceeded the EPA MCL in every sample collected from the DE monitor wells. The average U concentration for the twelve samples collected was 0.742 mg/l. Radium 226 exceeded the EPA MCL of 5.0 pCi/l in two samples. Combined radium 226+228 exceeded the standard in four of the samples. However the average radium 226+228 activity for each of the DE monitor wells was below the WDEQ Class I Standard.

LFG Sand Water Quality

Four wells completed in the LFG Sand were included in the baseline sampling program (LC15M, LC18M, LC21M, and LC25M). An additional three LFG monitor wells (MB-2, MB-5 and MB-8) have been installed and will be sampled in 2009. The results of the newer sampling will be reported in an updated groundwater baseline sampling summary report. Sample results from the existing baseline monitor wells are included in **Table D6-15a**.

Results of the baseline sampling indicate that the LFG monitor wells are calcium-bicarbonate to calcium-sulfate water. TDS and sulfate levels are below the WDEQ Class I Standards (500 mg/l and 250 mg/l, respectively) and chloride levels in all four wells are low (10 mg/l or less).

Manganese and selenium were below the respective WDEQ Class I Standards in all the LFG samples. Iron exceeded the WDEQ Class I Standard in three out of four samples at LC18M and one out of four samples at LC25M.

Uranium levels exceeded the EPA MCL in every sample collected from the LFG monitor wells. The average U concentration for the LFG samples was 0.411 mg/l. Radium levels were widely distributed. Samples from LFG wells LC15M, LC18M and LC21M exceeded the WDEQ Class I Standard for radium 226+228.

HJ Horizon Water Quality

Four wells completed in the HJ Horizon were included in the baseline sampling program (LC16M, LC19M, LC22M, and LC26M). An additional three HJ monitor wells (MB-3, MB-6 and MB-9) have been installed and will be sampled in 2009. The results of the newer sampling will be reported in an updated groundwater baseline sampling summary report. Sample results from the existing baseline monitor wells are included in **Table D6-15a**.

Results of the baseline sampling indicate that the HJ monitor wells are calcium-bicarbonate to calcium-sulfate water. Both sulfate and TDS levels in LC26M exceed the WDEQ Class I Standards (250 mg/l and 500 mg/l, respectively). Chloride levels in all four wells are low (10 mg/l or less).

Manganese and selenium were below the respective WDEQ Class I Standards in all the HJ samples.

Uranium levels exceeded the EPA MCL in every sample collected from the HJ monitor wells. The average U concentration for the HJ samples was 0.245 mg/l.

UKM Sand Water Quality

Six wells completed in the UKM Sand were included in the baseline sampling program (LC17M, LC20M, LC23M, LC24M, LC27M, and LC28M). Two of the wells were originally thought to be completed in the HJ Horizon (LC27M and LC28M) but were later reinterpreted as UKM completions. One UKM monitor well (MB-4) has been installed and will be sampled in 2009. The results of the newer sampling will be reported in an updated groundwater baseline sampling summary report. Sample results from the existing baseline monitor wells are included in **Table D6-15a**.

Results of the baseline sampling indicate that the UKM monitor wells are calcium-bicarbonate to calcium-sulfate water. TDS and sulfate levels are below the WDEQ Class I Standards (500 mg/l and 250 mg/l, respectively) and chloride levels in all six wells are low (10 mg/l or less).

Manganese and selenium were below the respective WDEQ Class I Standards in all the UKM samples.

Uranium levels exceeded the EPA MCL in most of the samples collected from the UKM monitor wells. The exceptions were at wells LC27M and LC28M. The average U concentration for the UKM samples was 0.030 mg/l.

Average radium 226+228 levels exceeded the WDEQ Class I Standard in each of the UKM monitor wells.

Summary of Site Groundwater Quality

General water quality in the shallow Battle Spring aquifers within the Permit Area tends to be relatively good, with the exception of the presence of radionuclides. TDS and sulfate values are relatively low, with occasional exceedances of WDEQ Class I standards. Manganese is elevated above state and federal standards in the water table aquifer (DE) but is below standards in deeper confined aquifers in the vicinity of the uranium orebodies. Radium-226+228 exceeds the EPA MCL in over two thirds of the samples collected and the average uranium concentration is an order of magnitude greater than the EPA MCL for that constituent. Elevated concentration of these constituents is consistent with the presence of uranium orebodies.

D6.5 Hydrologic Conceptual Model

A hydrologic conceptual model of the Project and surrounding area has been developed to provide a framework that allows LC ISR, LLC to make decisions regarding optimal methods for extracting uranium from mineralized zones, and to minimize environmental and safety concerns caused by ISR operations.

LC ISR, LLC will use ISR technology at the Project to extract uranium from permeable uranium-bearing sandstones within the upper portion of the Battle Spring Formation, at depths ranging from 350 to 900 feet. A conceptual hydrologic model of the Project is summarized below.

D6.5.1 Regional Groundwater Conceptual Model

The Project is located within the northeastern portion of the Great Divide Basin. The Eocene Battle Spring Formation crops out over most of the northeastern portion of the Great Divide Basin, including the Permit Area. The total thickness of the Battle Spring Formation in the vicinity of the Permit Area is approximately 6,200 feet. The Battle Spring Formation contains multiple aquifers that are a part of the Tertiary aquifer system. Groundwater flow within the Battle Spring aquifers is primarily toward the interior of the basin, southwest of the Project. Recharge to the Battle Springs aquifers within the Project area is mostly the result of infiltration of precipitation to the north and northeast in the Green Mountains and Ferris Mountains. Based on available information, discharge from the Battle Spring aquifers is predominately to a series of lakes, springs and playa lake beds near the center of the basin. Some groundwater from the Battle Spring aquifers is discharged through pumping for stock watering, irrigation, industrial and domestic use.

The Battle Spring Formation is described as an arkosic fine- to coarse-grained sandstone with claystone and conglomerates. Groundwater within the Battle Spring aquifers is typically under confined (artesian) conditions, although locally unconfined conditions exist. The potentiometric surface within the Battle Spring aquifers is usually within 200 feet of the ground surface. Most wells drilled for water supply in this unit are less than 1,000 feet deep. Wells completed in the Battle Spring aquifers typically yield 30 to 40 gpm but yields as high as 150 gpm are possible.

Water quality within the shallow Tertiary aquifers generally represents sodium-bicarbonate to sodium-sulfate water types. TDS levels within the Battle Spring aquifers are generally below 500 mg/L along the northern flank of the Great Divide Basin near areas of outcrop. Low TDS waters within the Battle Springs aquifer are predominately

sodium-bicarbonate type waters. With increasing salinity, the water type tends to become more calcium-sulfate dominated. Notable exceptions to the relatively good water quality include waters with elevated radionuclides (uranium, Ra-226 and Ra-228). High levels of uranium are common in Tertiary sediments and groundwater of the Great Divide Basin. The Lost Creek Shroekingite deposit located northwest of the Project is noted for high uranium levels in groundwater. Uranium-bearing coals are present in the Wasatch Formation in the central part of the Great Divide Basin.

As described previously, the Battle Spring Formation crops out over most of the Permit Area. The Battle Spring is the shallowest occurrence of groundwater within the Permit Area. Water-bearing Quaternary and Tertiary units younger than the Battle Spring Formation are present several miles to the north and east and are hydraulically up-gradient of the Permit Area. Therefore, ISR operations conducted at the Project will have no impact on those shallower hydrostratigraphic units.

D6.5.2 Site Groundwater Conceptual Model

D6.5.2.1 Hydrostratigraphic Units

The hydrostratigraphic units of interest within the Battle Spring Formation, with respect to the Project include, from shallowest to deepest:

- DE Horizon (shallowest occurrence of groundwater):
 - sands and discontinuous clay/shale units, top of unit 100 to 200 ft bgs;
 - coalesces with underlying FG Horizon to the south; and
 - water levels in the DE Sand are typically 140 to 200 ft bgs;
- Upper No Name Shale (upper confining unit to the FG Horizon):
 - zero to 50 feet thick;
- FG Horizon (includes overlying aquifer to HJ Horizon):
 - subdivided into UFG, MFG and LFG Sands;
 - total thickness of horizon is 100 feet;
 - top of unit is 200 to 350 ft bgs;
 - LFG Sand the overlying aquifer to HJ Horizon;
 - LFG Sand is 20 to 50 feet thick; and
 - water levels in the LFG Sand are typically 160 to 200 ft bgs;
- Lost Creek Shale (upper confining unit to the HJ Horizon):
 - laterally continuous across Permit Area;
 - five to 45 feet thick; and
 - confining properties demonstrated from water levels and pump test;

- HJ Horizon (contains the primary production zone):
 - subdivided into UHJ, MHJ and LHJ Sands, although sands are hydraulically connected;
 - coarse-grained arkosic sands with thin lenticular intervals of fine sand, mudstone and siltstone;
 - averages 120 feet thick;
 - top of unit is 300 to 450 ft bgs; and
 - water levels in the HJ Horizon range from 150 to 200 ft bgs;
- Sage Brush Shale (lower confining unit to the HJ Horizon and upper confining unit to the UKM Horizon):
 - laterally continuous across Permit Area;
 - five to 75 feet thick;
 - top of unit 450 to 550 ft bgs; and
 - confining properties demonstrated from water levels and pump test;
- KM Horizon (includes possible secondary production zone, lower confining units and underlying aquifers):
 - subdivided into UKM, MKM and LKM Sands;
 - massive coarse sandstones with thin lenticular fine sandstone intervals;
 - top of unit is 450 to 600 ft bgs;
 - UKM Sand is a possible secondary production zone and first underlying aquifer;
 - UKM Sand is 30 to 60 ft thick;
 - water levels in the UKM Sand are generally 185 to 220 ft bgs;
 - No Name Shale is the lower confining unit to the UKM Sand;
 - No Name Shale is ten to 30 feet thick and laterally extensive but will require additional characterization; and
 - MKM is the underlying aquifer to the UKM Sand but will require additional characterization.

D6.5.2.2 Potentiometric Surface and Hydraulic Gradients

Potentiometric surface of the HJ Horizon indicates that groundwater flow across the permit area is to the west-southwest under a hydraulic gradient of 0.005 to 0.006 ft/ft (15.8 to 31.6 ft/mi), generally consistent with the regional flow system. The Fault acts as a hydraulic barrier to groundwater flow as demonstrated from water level differences of 15 feet across the Fault within the HJ Horizon and the pump test results. However, the Fault does not appear to strongly affect either the direction of flow or the hydraulic gradient within the HJ Horizon. **Figure D6-11g** shows that the groundwater flow direction across the permit area, based on the potentiometric surface, is toward the west southwest on both sides of the Fault. The reason for the minimal impact of the Fault on

groundwater flow direction within the permit area is because the Fault is only present across a small portion of the permit area, dying out to the east-northeast and west-southwest. The hydraulic gradient north of the Fault is approximately 0.005 ft/ft whereas on the south side of the Fault the hydraulic gradient is approximately 0.006 ft/ft. The pump tests indicate minor leakage of groundwater across the Fault when large head differences exist within the HJ aquifer across the Fault.

Groundwater flow direction and hydraulic gradients for the overlying (DE and FG) and underlying aquifers (UKM) are generally similar to that of the HJ Horizon. Groundwater flow on both sides of the Fault is toward the west-southwest at hydraulic gradients between 0.005 ft/ft to 0.007 ft/ft as shown in the potentiometric maps for the DE, LFG and UKM Sands (**Figures D6-11e, D6-11f and D6-11h**, respectively). The potentiometric heads decrease with depth. Differences in water level elevations between the LFG, HJ and UKM aquifers indicate that confining units are present between these hydrostratigraphic units.

Pump tests indicate the presence of confining units between the LFG and HJ aquifers and between the HJ and UKM aquifers, although some minor hydraulic communication exists between those units. The hydraulic communication only becomes apparent when large stresses (head differences) are applied to the aquifers through pumping. Hydraulic communication between the HJ aquifer and overlying and underlying aquifers may be through historic boreholes that were improperly abandoned, leakage through the confining shale units, or contact of sands juxtaposed across the Fault. Additional investigation will be completed prior to production of any mine units. More detail about abandonment work is provided in **Section D5.4.2.1**. In particular, **Table D5-2** is a summary of efforts to relocate and re-abandon historic holes, and **Attachment D5-3** includes historic memos regarding previous operator's attempts to relocate and re-abandon holes.

Vertical hydraulic gradients range from -0.020 to 0.37 ft/ft between the LFG, HJ and UKM aquifers and consistently indicate decreasing hydraulic head with depth. The vertical gradients indicate the potential for groundwater flow is predominately downward. The vertical gradients also support the confining nature of the Lost Creek and Sage Brush Shale. The vertical gradient between the DE and LFG aquifers is minimal, consistent with observations that those hydrostratigraphic units coalesce in places within the Permit Area. An exception to this occurs in the eastern portion of the site where the vertical gradient between the DE and LFG aquifers is 0.28, indicating a strong downward potential.

D6.5.2.3 Aquifer Properties

Transmissivity for the HJ Horizon ranges from 35 to 400 ft²/d (260 to 3,000 gpd/ft). Based on long-term pump tests, the estimated “effective” transmissivity (because of the impacts of the Fault) is 60 to 80 ft²/d (450 to 600 gpd/ft) on both sides of the Fault. Because of the boundary effect of the Fault (e.g., the system is not an infinite-acting aquifer), the actual transmissivity of the aquifer, without impacts from the Fault, would be higher. Using the effective transmissivity and an average thickness of 120 feet, the “effective” hydraulic conductivity of the HJ Horizon is in the range of 0.5 to 0.67 ft/d. The actual hydraulic conductivity of the aquifer is probably between one and 1.5 ft/d. Storativity of the HJ Horizon ranges from 5.0×10^{-5} to 5.0×10^{-4} .

Based on more limited testing, the transmissivity of the LFG aquifer is lower than for the HJ Horizon ranging from 4.4 to 40 ft²/d (30 to 300 gpd/ft). The range of transmissivity of the UKM aquifer is similar to but slightly lower than the HJ aquifer, from 26 to 115 ft²/d (195 to 860 gpd/ft). Transmissivity of the DE Horizon is variable, ranging from 1.3 to 130 ft²/d (10 to 1,000 gpd/ft). Storativity values have not been determined for the overlying and underlying aquifers at this time because no multi-well pump tests have been conducted within those aquifers. However, it is expected that storativity values in the FG and KM Horizons will be similar to the range observed in the HJ Horizon. The DE Horizon is at least partially under unconfined conditions and therefore will have a specific yield instead of a storage coefficient. Long-term multi-well pump tests will be performed in the fall of 2007 to collect additional data regarding aquifer properties of the overlying and underlying aquifers.

D6.5.2.4 Water Quality

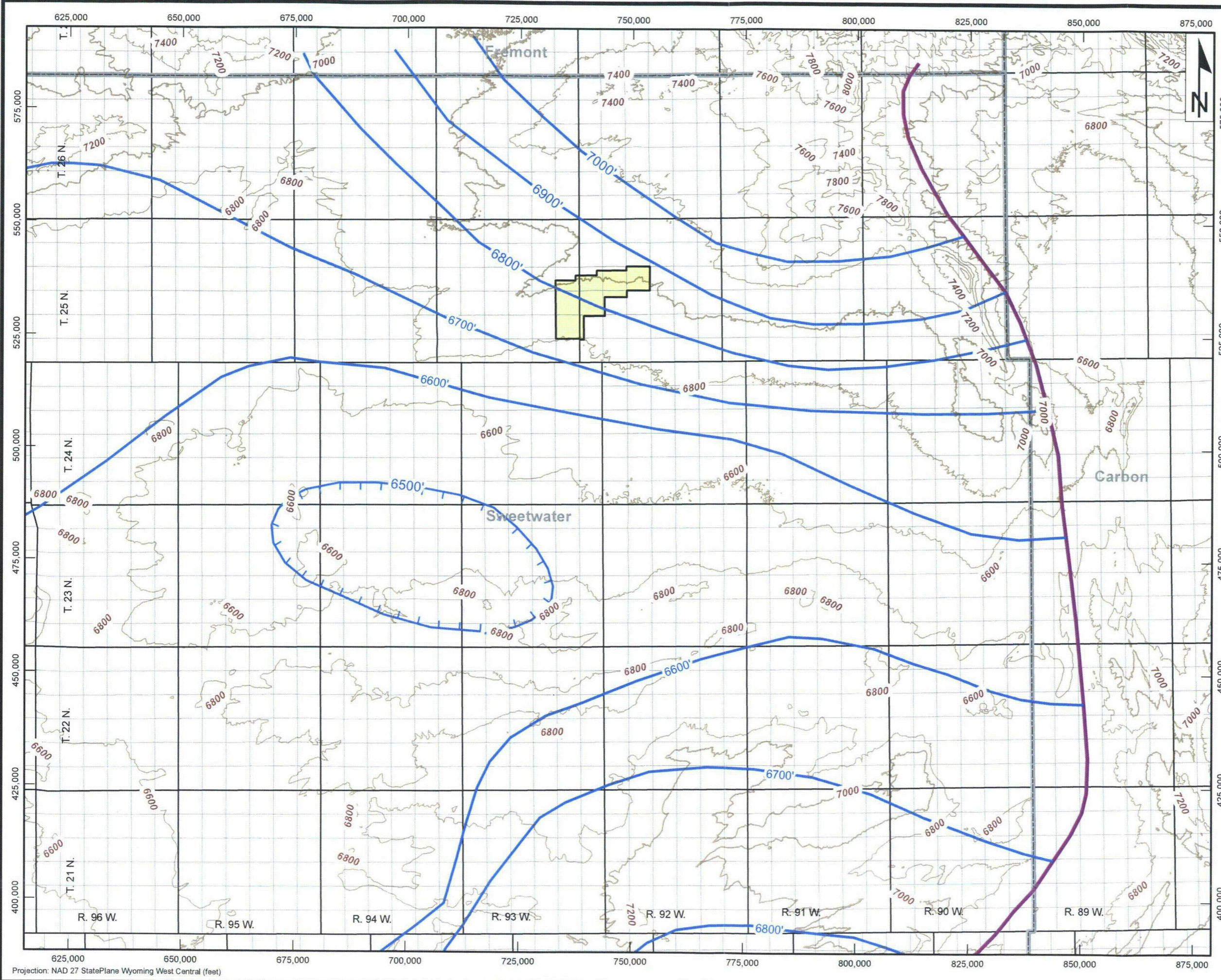
Water quality within the hydrostratigraphic units of interest (the production zones and overlying and underlying aquifers) is generally good with respect to major chemistry. TDS and sulfate levels are typically below respective WDEQ Class I Standards and EPA SDWS, although occasionally, regulatory standards are exceeded. Chloride levels are low, (typically less than ten mg/L) making this parameter a good indicator for excursion monitoring.

Trace metals generally are below WDEQ Class I Standards and EPA MCLs in the production zone, overlying and underlying aquifers. Ammonia, arsenic, iron and selenium occasionally exceed the respective standards. Manganese is present above the regulatory standards in over half of the samples collected from the DE Horizon. Manganese was below the WDEQ Class I Standards and EPA MCL in all samples from other hydrostratigraphic units.

Uranium is present in nearly all of the wells at levels exceeding the EPA MCL of 0.03 mg/L. The average uranium concentration for all of the hydrostratigraphic units of interest is 0.30 mg/L, an order of magnitude greater than the EPA MCL. Radium-226+228 levels exceed the EPA MCL and WDEQ Class I Standard (five pCi/L) in two-thirds of the samples collected. The percentage of wells that exceed radium-226+228 standards is greater for the HJ and UKM Production Zone aquifers than for the FG and DE Horizons. Dissolved radionuclide levels are commonly elevated in groundwater associated with uranium-bearing sandstones.

D6.5.2.5 Summary

The uranium bearing sandstones within the upper Battle Spring Formation appear to be suitable targets for ISR operations. The primary production zone aquifer (HJ Horizon) is bounded by laterally extensive upper and lower confining units, as demonstrated by static water level differences and responses to pump tests. Aquifer properties (transmissivity, hydraulic conductivity and storativity) are within the ranges observed at other ISR operations that have successfully extracted uranium reserves. Water quality is generally consistent throughout the hydrostratigraphic units of interest. Elevated radionuclides are present in the groundwater, but this is consistent with the presence of uranium ore deposits within the sandstones. The Fault acts as a hydraulic barrier to flow and will need to be accounted for in mine unit design and operation.



Legend

- Potentiometric Surface Depression
- Potentiometric Surface (ft above mean sea level)
- Battle Springs / Wasatch Limit
- Lost Creek Permit Area

Scale: 1:250,000

Lost Creek ISR, LLC
Littleton, Colorado, USA

Petrotek www.petrotek.com
Littleton, CO USA

FIGURE D6-8
Potentiometric Surface, Tertiary Aquifer System, Great Divide Basin (After Naftz, 1996)
Lost Creek Permit Area

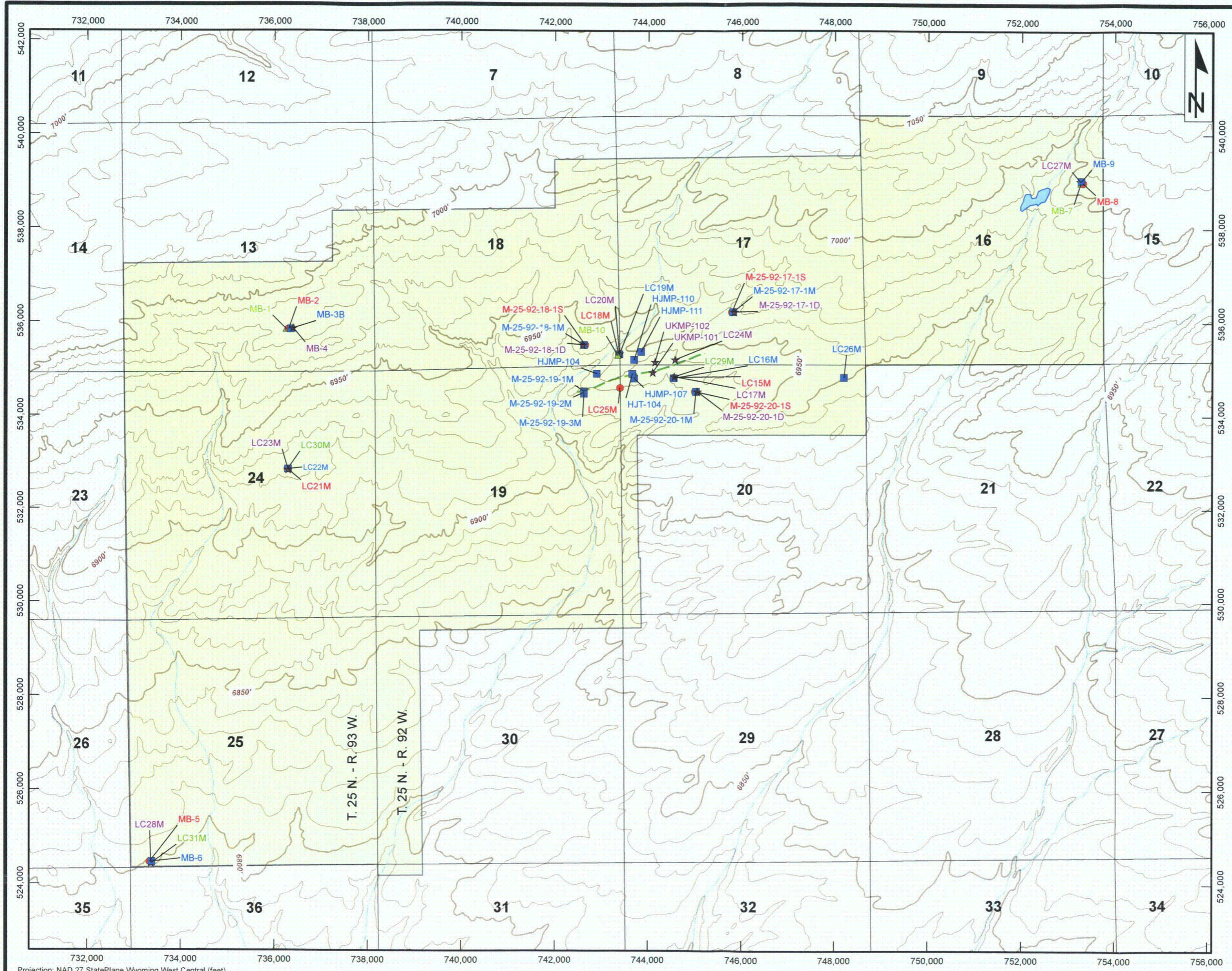
Issued For: WDEQ-LQD 1.0 Drawn By: JM

Issued/ Revised: 12.04.08

Drawing No.: WDEQ_LQD_FIG_D6-8.mxd



Projection: NAD 27 StatePlane Wyoming West Central (feet)



Legend

Monitor Wells

- ▲ DE Horizon
- LFG Horizon
- HJ Horizon
- ★ UKM Horizon

--- Lost Creek Fault

▭ Lost Creek Permit Boundary

Scale: 1:24,000

Lost Creek ISR, LLC
Littleton, Colorado, USA

Petrotek
www.petrotek.com
Littleton, CO USA

FIGURE D6-9
Location Map,
Lost Creek Monitor Wells

Lost Creek Permit Area

Issued For: WDEQ-LQD 1.0	Drawn By: JM
Issued/ Revised: 04.06.09	
Drawing No.: WDEQ_LQD_FIG_D6-9.mxd	

0 2,000 4,000 Feet

Projection: NAD 27 StatePlane Wyoming West Central (feet)

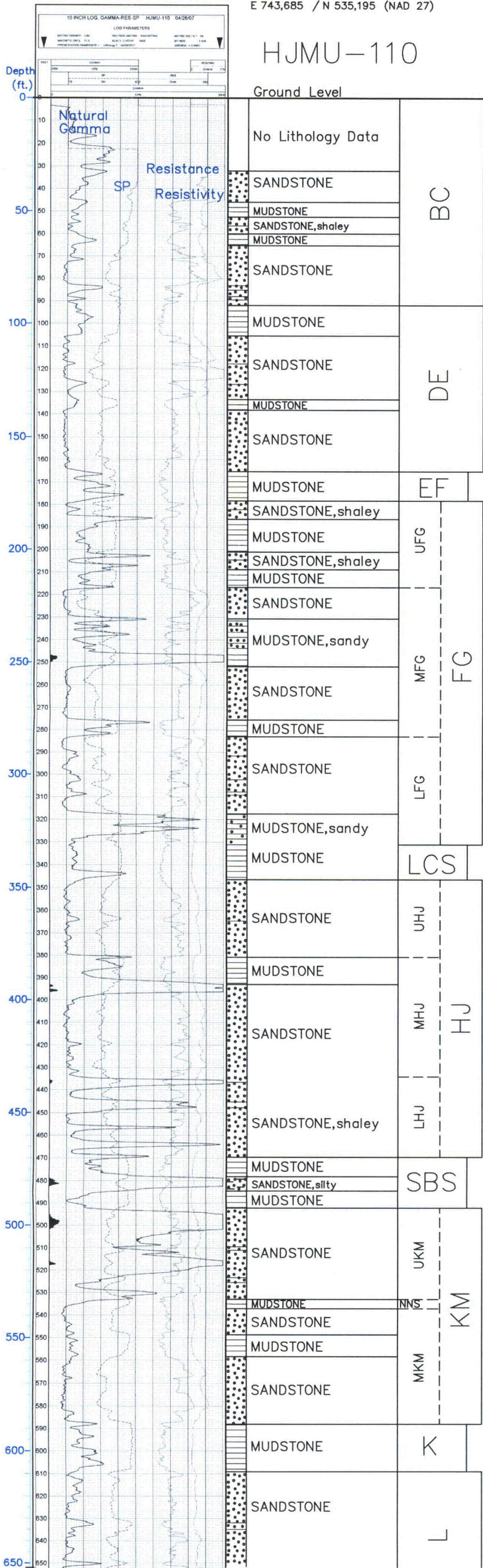
Lost Creek ISR, LLC TYPE LOG – LOST CREEK PROJECT

WELL # HJMU-110

E 2,212,004 / N 595,897 (NAD 83)
E 743,685 / N 535,195 (NAD 27)

Battle Springs Formation – Typical Lithology

HJMU-110



SANDSTONE: arkosic; medium to very coarse-grained, locally fine-grain; poorly-sorted; subangular to angular; weakly to moderately consolidated, moderately firm.
Represents bed-load to mixed-load, channel-fill fluvial environments within a distal alluvial fan system.

MUDSTONE, commonly very silty and/or sandy; soft to very firm; and
CLAYSTONE, moderately firm to very firm, dense, blocky.
Secondary amounts of SILTSTONE, commonly very sandy, firm to very firm.

Represents inter-channel and overbank fluvial environments.

Considerable lateral facies changes, inter-tonguing, and overlapping occurs between the two dominant lithologies. This can be very dramatic within short distances.

DE Horizon: Multiple sandstone units interbedded with mudstones
Host to secondary amounts of uranium mineralization.

EF:(upper No-Name Shale): Mudstone and claystone, commonly silty and/or sandy; locally with interbedded very fine-grained sands. Does not exhibit lateral continuity throughout project area. Represents a series of overlapping shaley units.

Overlying
Aquifer

FG Horizon: Multiple sandstone units interbedded with mudstones
Host to secondary amounts of uranium mineralization.

Upper
Confining Unit

LCS (Lost Creek Shale): Mudstone and claystone, commonly silty and/or sandy; locally with interbedded very fine-grained sands. Exhibits lateral continuity throughout project area. Commonly intertongues with upper portions of the HJ and lower portions of the FG.

Production
Zone
Aquifer

HJ Horizon: Multiple sandstone units interbedded with mudstones
Primary host to uranium mineralization.

Lower
Confining Unit

SBS (Sagebrush Shale): Mudstone and claystone, commonly silty and/or sandy; locally with interbedded very fine-grained sands. Exhibits lateral continuity throughout project area. Commonly intertongues with upper portions of the KM and lower portions of the HJ.

Underlying
Aquifer

KM Horizon: Multiple sandstone units interbedded with mudstones
Host to significant uranium mineralization.

Includes NNS (No Name Shale) separating UKM from MKM.
Does not exhibit regional continuity.

(Note: MKM has recently been renamed LKM).

K (K Shale): Mudstone and claystone, commonly silty and/or sandy.

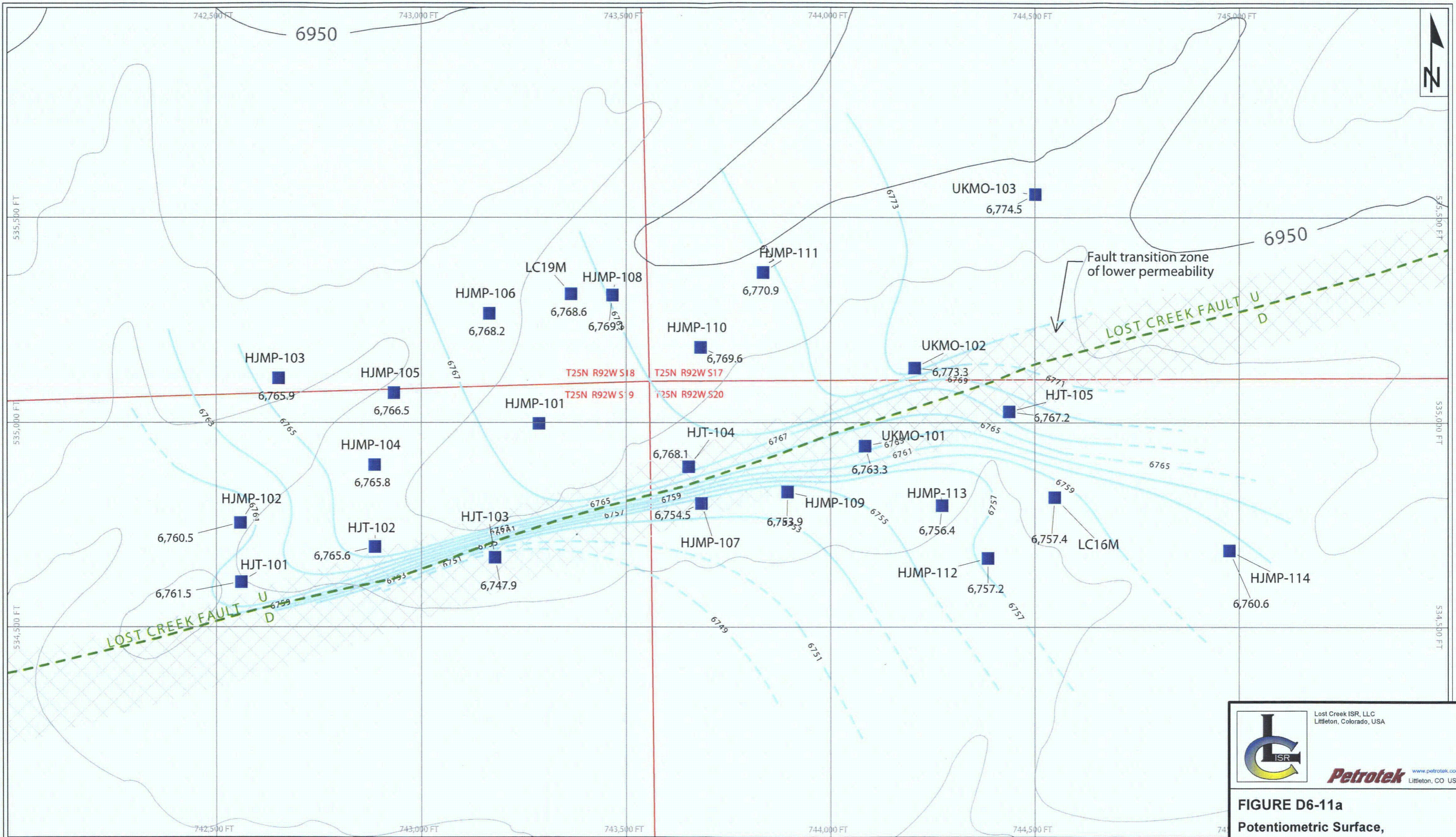
Lost Creek ISR, LLC
Littleton, Colorado, USA

FIGURE D6-10
Site Hydrostratigraphic Units

Lost Creek Permit Area

Issued For: WDEQ-LQD 3.0
Issued/Revised: 4.28.09 Drawn By: CVH

Vertical Scale: 1"=50' (TD 850)



Legend

- HJ Monitor Wells
- Potentiometric Surface (elev. in feet amsl)
- - - Inferred Potentiometric Surface (elev. in feet amsl)
- - - Lost Creek Fault
- Surface Contour Interval - 10ft.



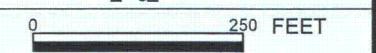

 Lost Creek ISR, LLC
 Littleton, Colorado, USA

 www.petrotek.com
 Littleton, CO USA

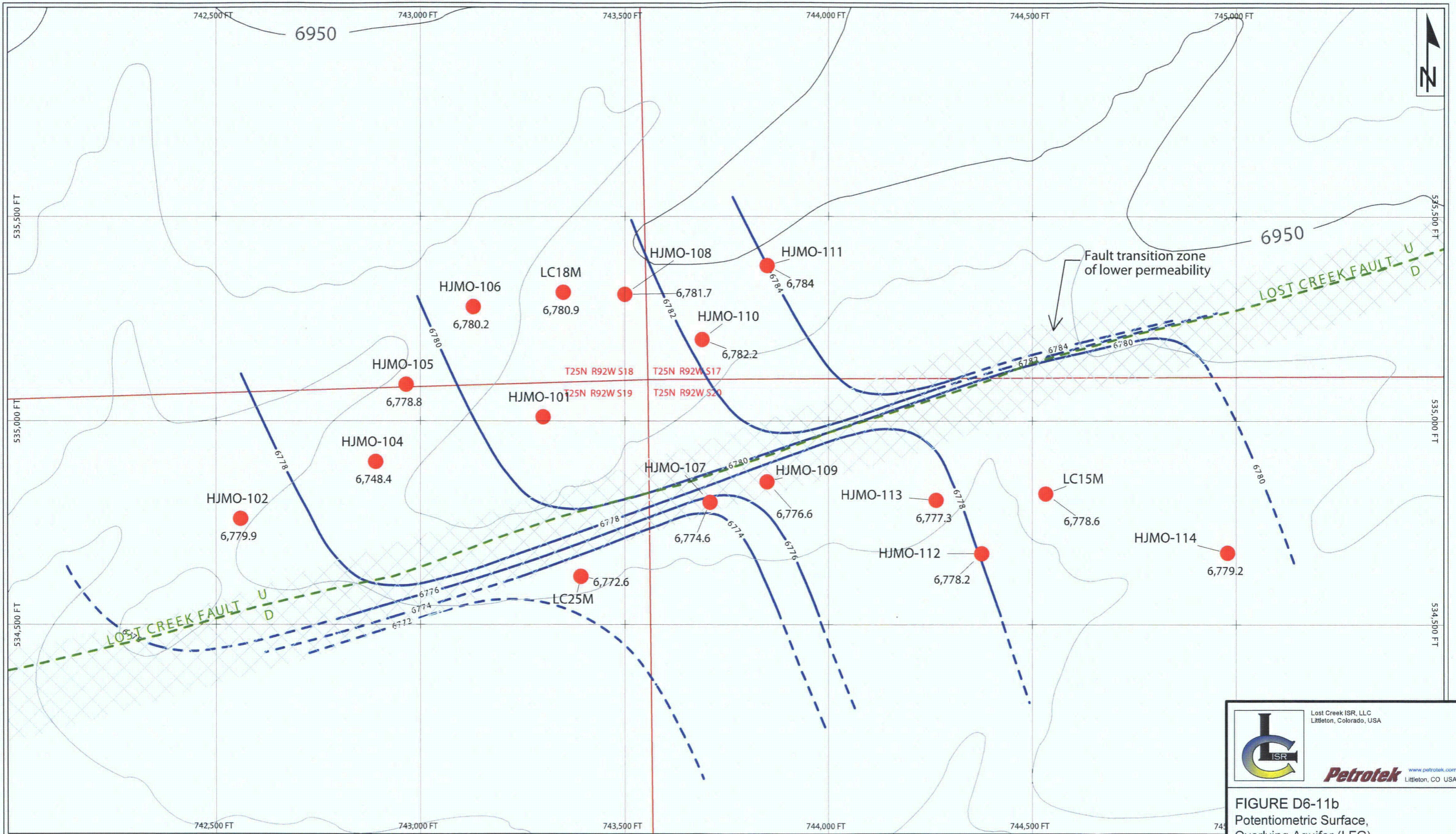
FIGURE D6-11a
Potentiometric Surface,
HJ Production Zone, November 2007
Lost Creek Permit Area

Issued For: WDEQ-LQD 1.0 Drawn By: JM

Issued/ Revised: 04.30.09

Drawing No.: WDEQ-LQD_Fig_D6-11a.ai





Legend

- LFG Monitor Wells
- Potentiometric Surface (elev. in feet amsl)
- - - Inferred Potentiometric Surface (elev. in feet amsl)
- - - Lost Creek Fault
- Surface Contour Interval - 10ft.



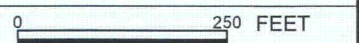

 Lost Creek ISR, LLC
 Littleton, Colorado, USA

 www.petrotek.com
 Littleton, CO USA

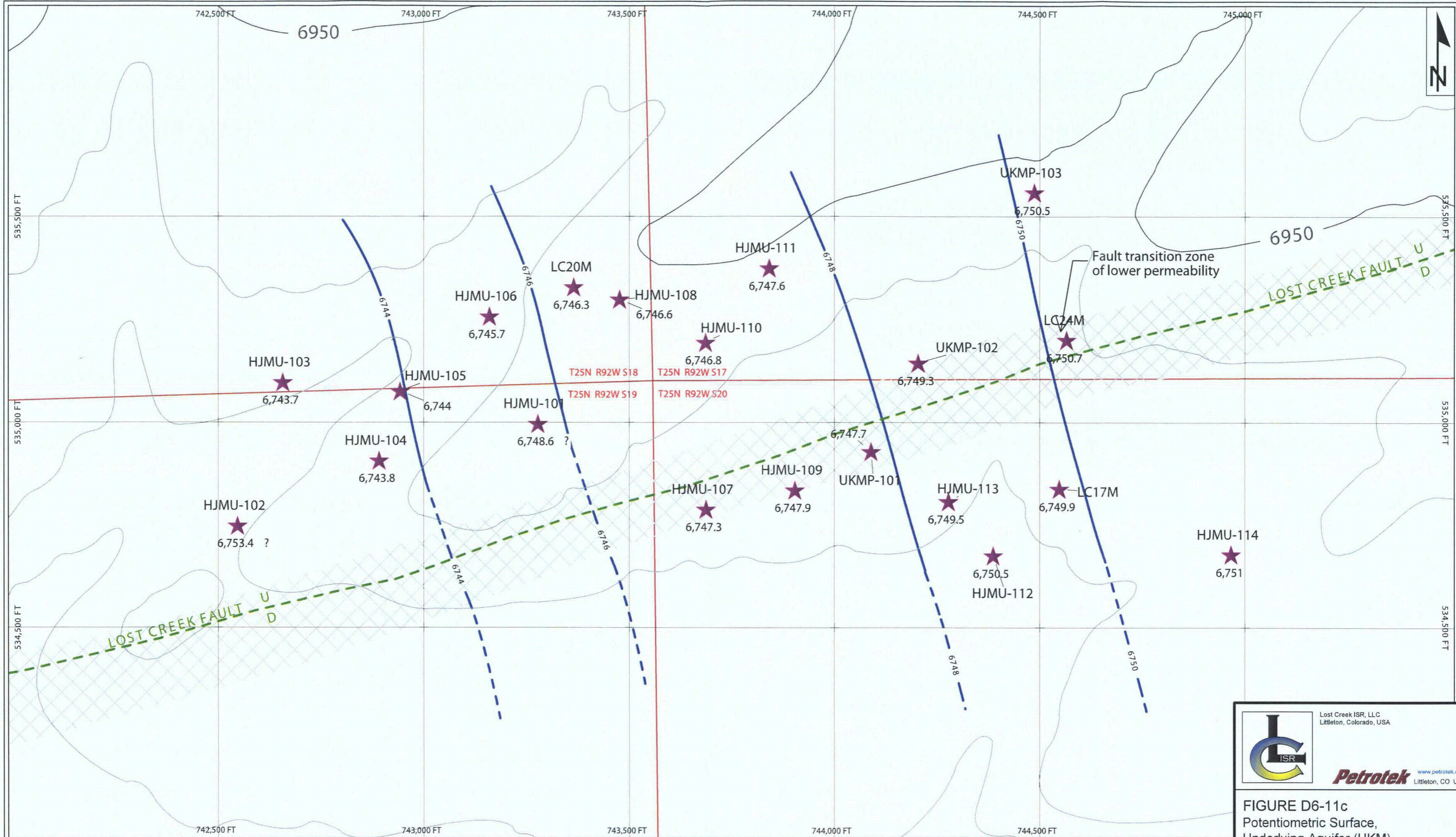
FIGURE D6-11b
 Potentiometric Surface,
 Overlying Aquifer (LFG),
 November 2007
 Lost Creek Permit Area

Issued For: WDEQ-LQD 1.0 Drawn By: JM

Issued/ Revised: 04.30.09

Drawing No.: WDEQ-LQD_Fig_D6-11b.ai





Legend

- ★ UKM Monitor Wells
- Potentiometric Surface (elev. in feet amsl)
- - - Inferred Potentiometric Surface (elev. in feet amsl)
- - - Lost Creek Fault
- Surface Contour Interval - 10ft.



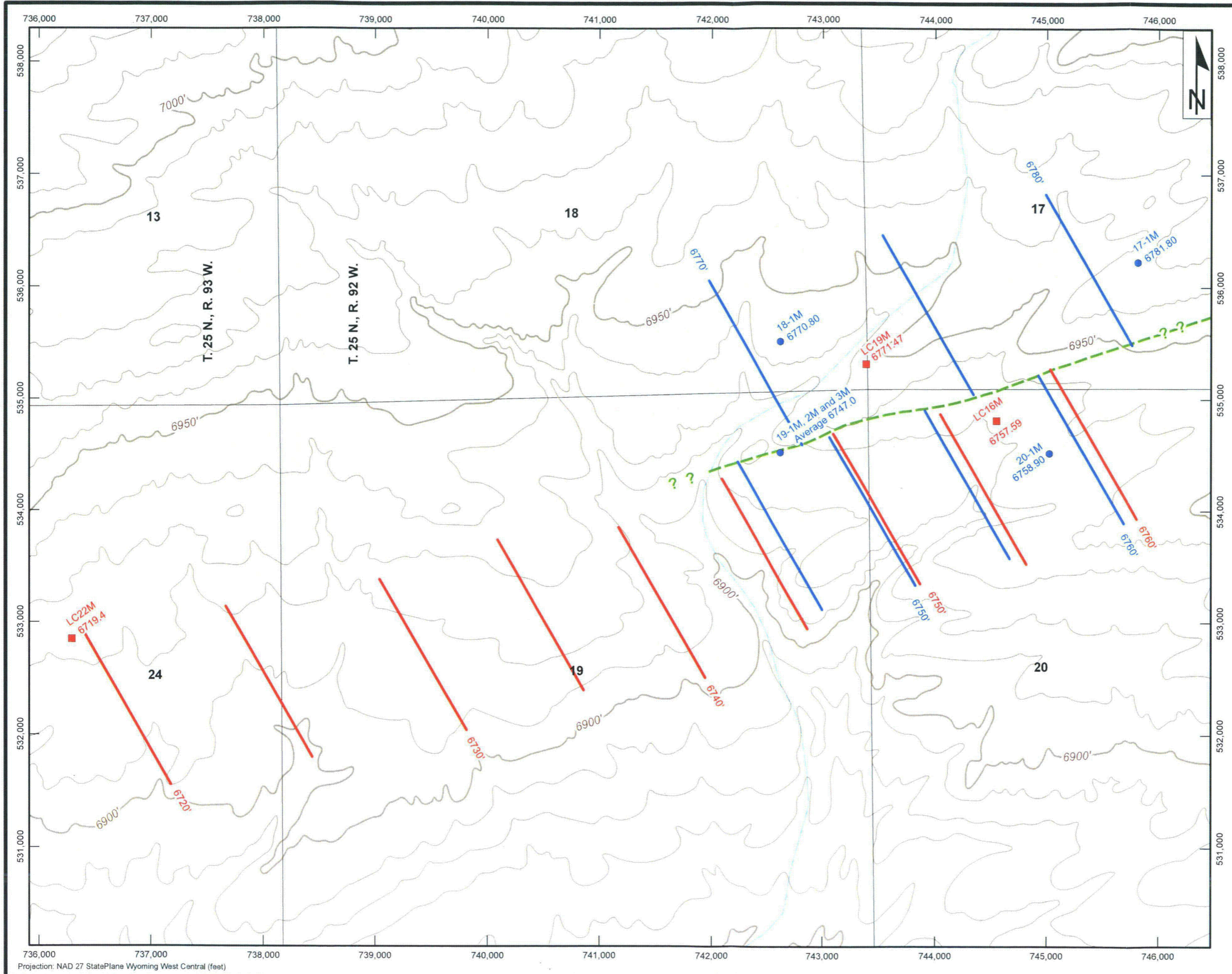

 Lost Creek ISR, LLC
 Littleton, Colorado, USA

 www.petrotek.com
 Littleton, CO USA

FIGURE D6-11c
 Potentiometric Surface,
 Underlying Aquifer (UKM),
 November 2007
 Lost Creek Permit Area

Issued For: WDEQ-LQD 1.0 Drawn By: JM
 Issued/ Revised: 04.30.09
 Drawing No.: WDEQ-LQD_Fig_D6-11c.ai

0 250 FEET



- Legend**
- October 2006 Water Level Elevation
 - October 2006 Potentiometric Surface
 - August 1982 Water Level Elevation
 - August 1982 Potentiometric Surface
 - - - Lost Creek Fault
 - Intermediate Contour Interval - 10ft
 - Index Contour Interval - 50ft.

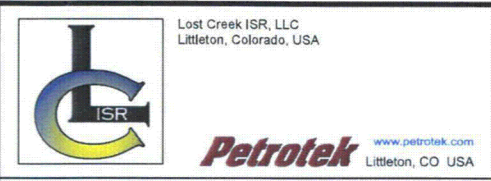
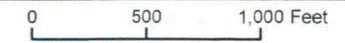


FIGURE D6-11d
Potentiometric Surface,
HJ Production Zone, August 1982
and October 2006
Lost Creek Permit Area

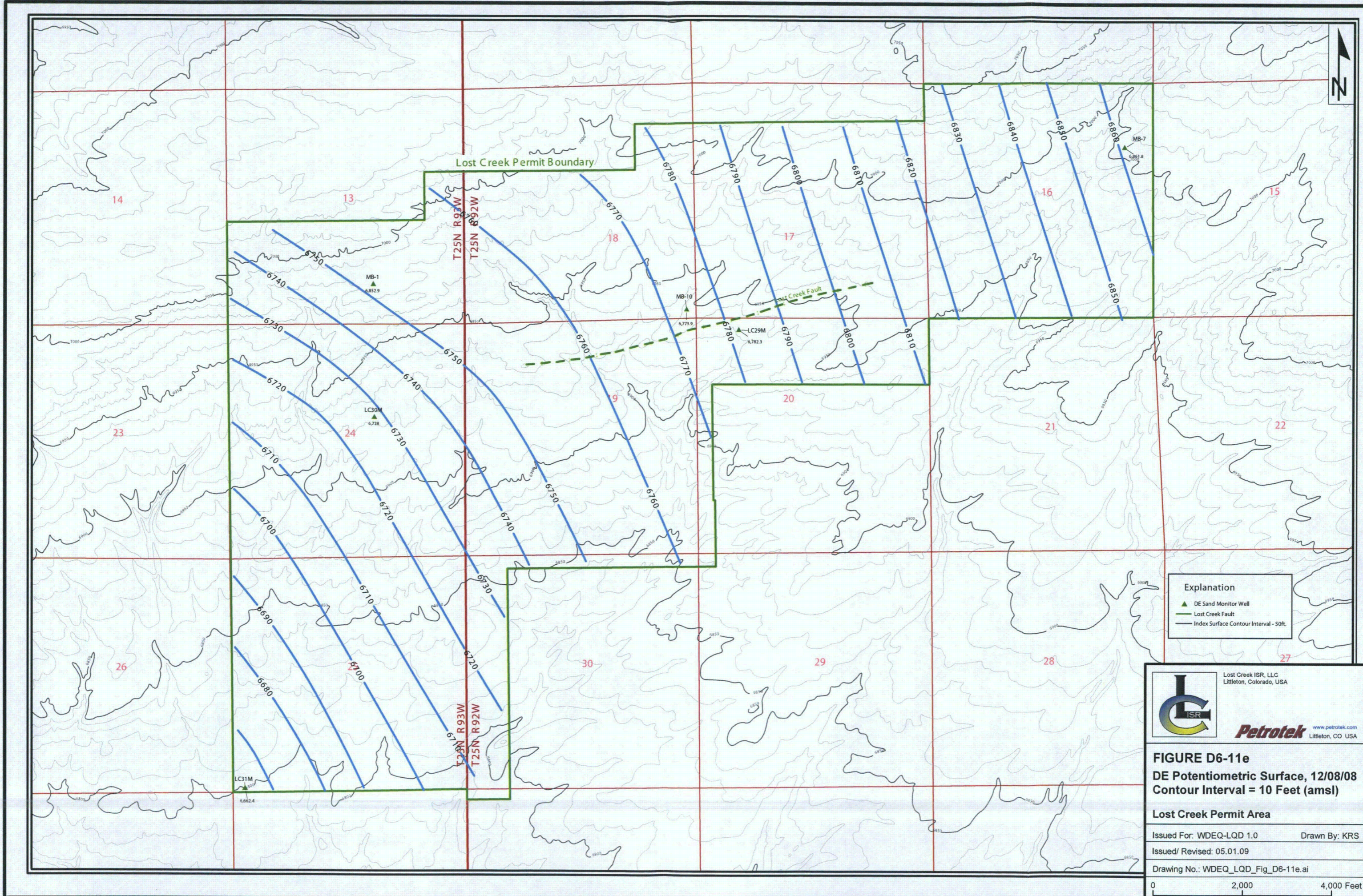
Issued For: WDEQ-LQD 1.0 Drawn By: JM

Issued/ Revised: 04.30.09

Drawing No.: WDEQ_LQD_FIG_D6-11d.mxd



Projection: NAD 27 StatePlane Wyoming West Central (feet)



Explanation

- ▲ DE Sand Monitor Well
- Lost Creek Fault
- Index Surface Contour Interval - 50ft.




 Lost Creek ISR, LLC
 Littleton, Colorado, USA

 www.petrotek.com
 Littleton, CO USA

FIGURE D6-11e
DE Potentiometric Surface, 12/08/08
Contour Interval = 10 Feet (amsl)

Lost Creek Permit Area

Issued For: WDEQ-LQD 1.0	Drawn By: KRS
Issued/ Revised: 05.01.09	
Drawing No.: WDEQ_LQD_Fig_D6-11e.ai	

