

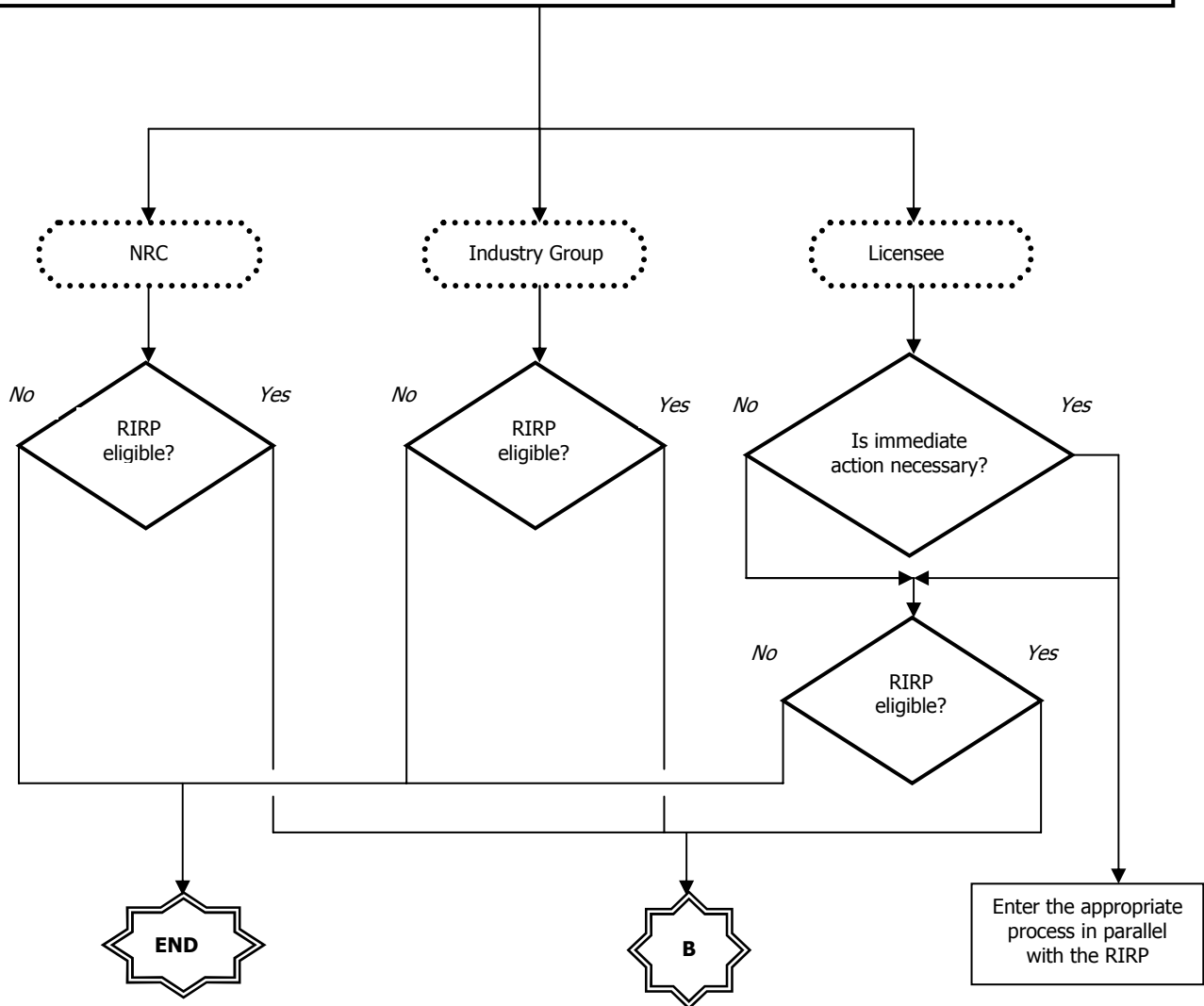
Regulatory Issue Resolution Protocol NEI Flow Chart

IDENTIFICATION PHASE (A)

Any NRC/Industry person or group may identify a multi-plant issue that warrants screening to determine the value-impact of resolution via the Regulatory Issue Resolution Protocol (RIRP). The following is a *[partial]* list of sources for potential RIRP issues:

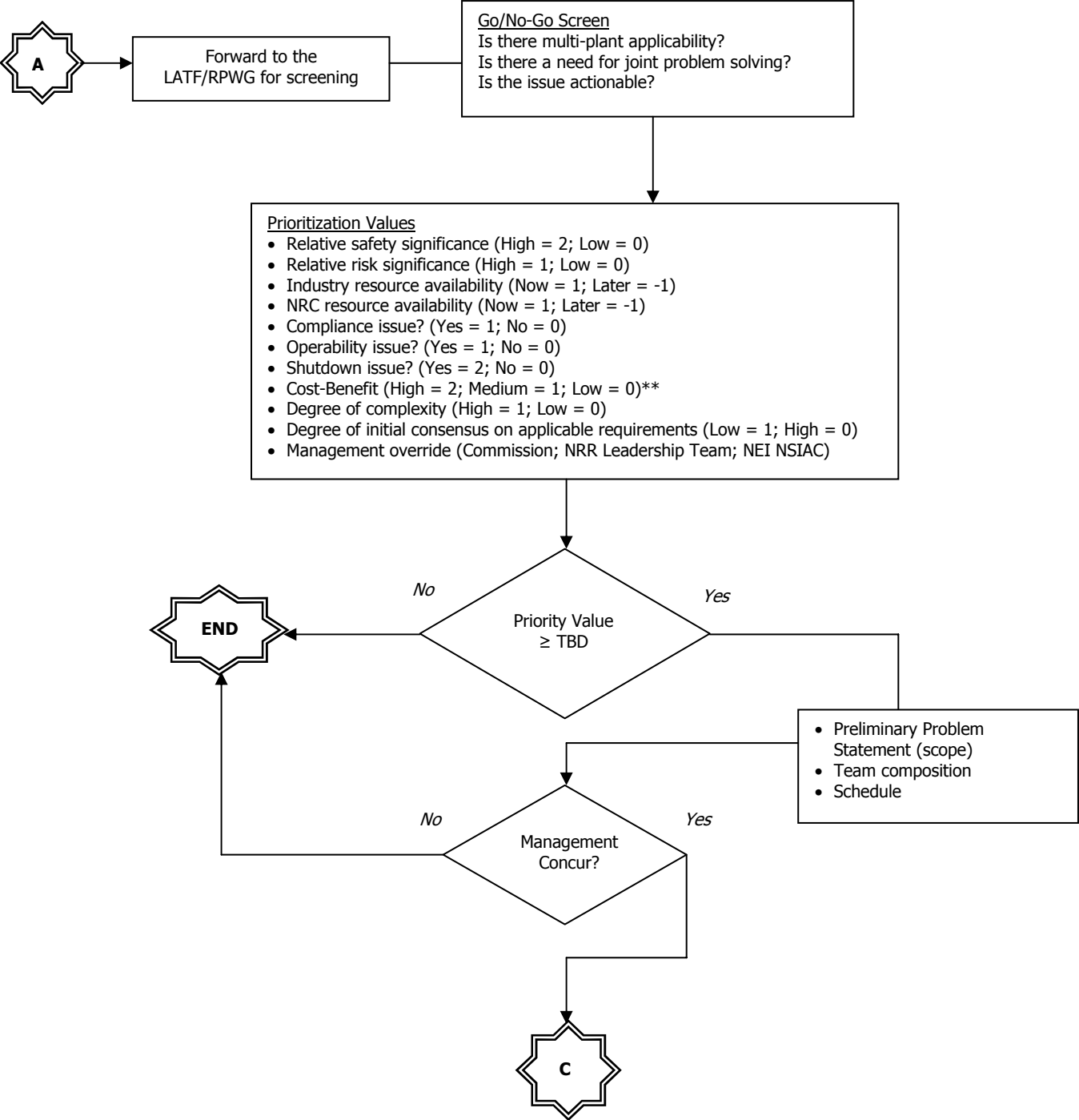
- requests for additional information (licensing actions and Topical Reports)
- inspection reports (URIs; NOVs; etc.)
- task interface agreements
- NOEDs
- operating experience reports (INPO)
- licensee event reports (10 CFR 50.72/50.73)
- generic communications
- license amendments (10 CFR 50.90)
- exemptions (10 CFR 50.12)
- requests for relief/alternative (10 CFR 50.55a)
- telecons, meetings, and workshops

Note: The RIRP does not alleviate the responsibility of each licensee to follow all applicable regulatory requirements.



Regulatory Issue Resolution Protocol NEI Flow Chart

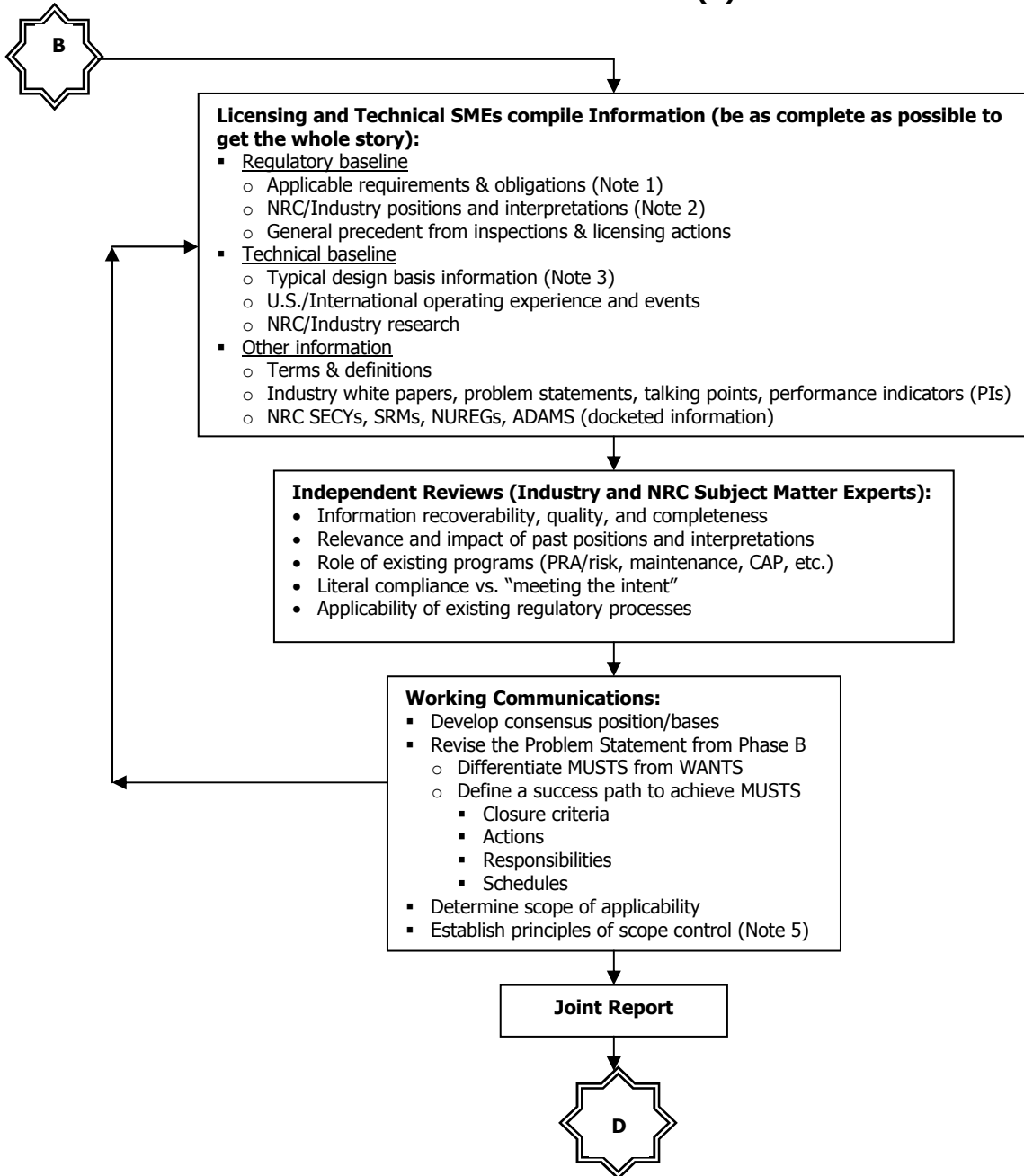
SCREENING PHASE (B)



** Cost-Benefit = Value (non-monetary) ÷ Cost (monetary)

Regulatory Issue Resolution Protocol NEI Flow Chart

EVALUATION PHASE (C)



Note 1: Rules and regulations (including Federal Register statements-of-consideration (SOCs); Licenses (including Tech Specs); Orders; Commitments

Note 2: NRC Review Standards; SRP/BTPs; Reg. Guides; ISGs; Generic Communications; NRC safety evaluations (SEs); Inspection Reports; Inspection Manual; Enforcement Manual; Industry Initiatives; Topical Reports; NEI Guidelines; Industry Codes/Standards; Correspondence; Internal Memos in the public record (e.g., TIAs)

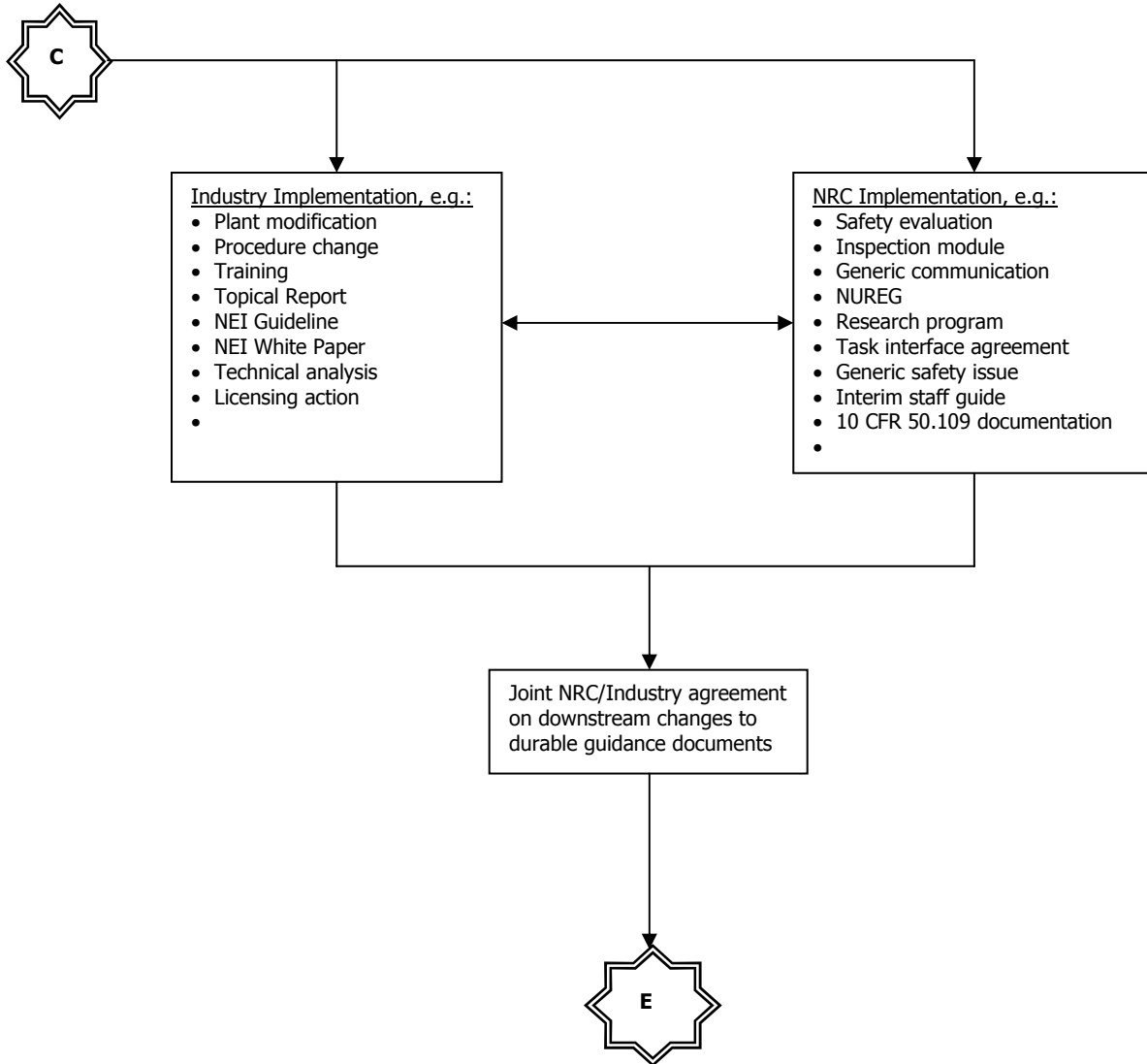
Note 3: Standard UFSAR language; typical design specs

Note 4: SECY/SRM; NUREGs

Note 5: Scope Control = deciding whether new information/positions developed in conjunction with the RIRP are part of the current issue or whether they constitute a separate issue.

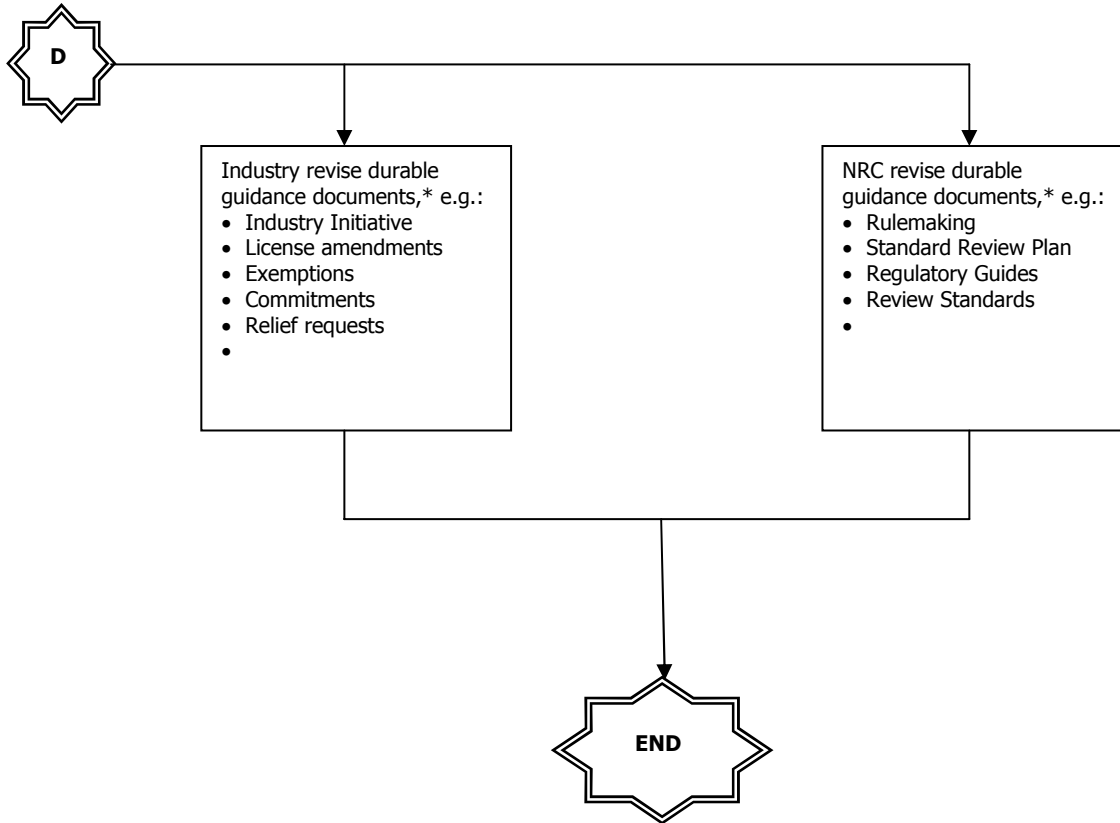
Regulatory Issue Resolution Protocol
NEI Flow Chart

IMPLEMENTATION PHASE (D)



Regulatory Issue Resolution Protocol
NEI Flow Chart

DOCUMENTATION PHASE (E)



*Durable Guidance Document = a document that is managed with a change process.