

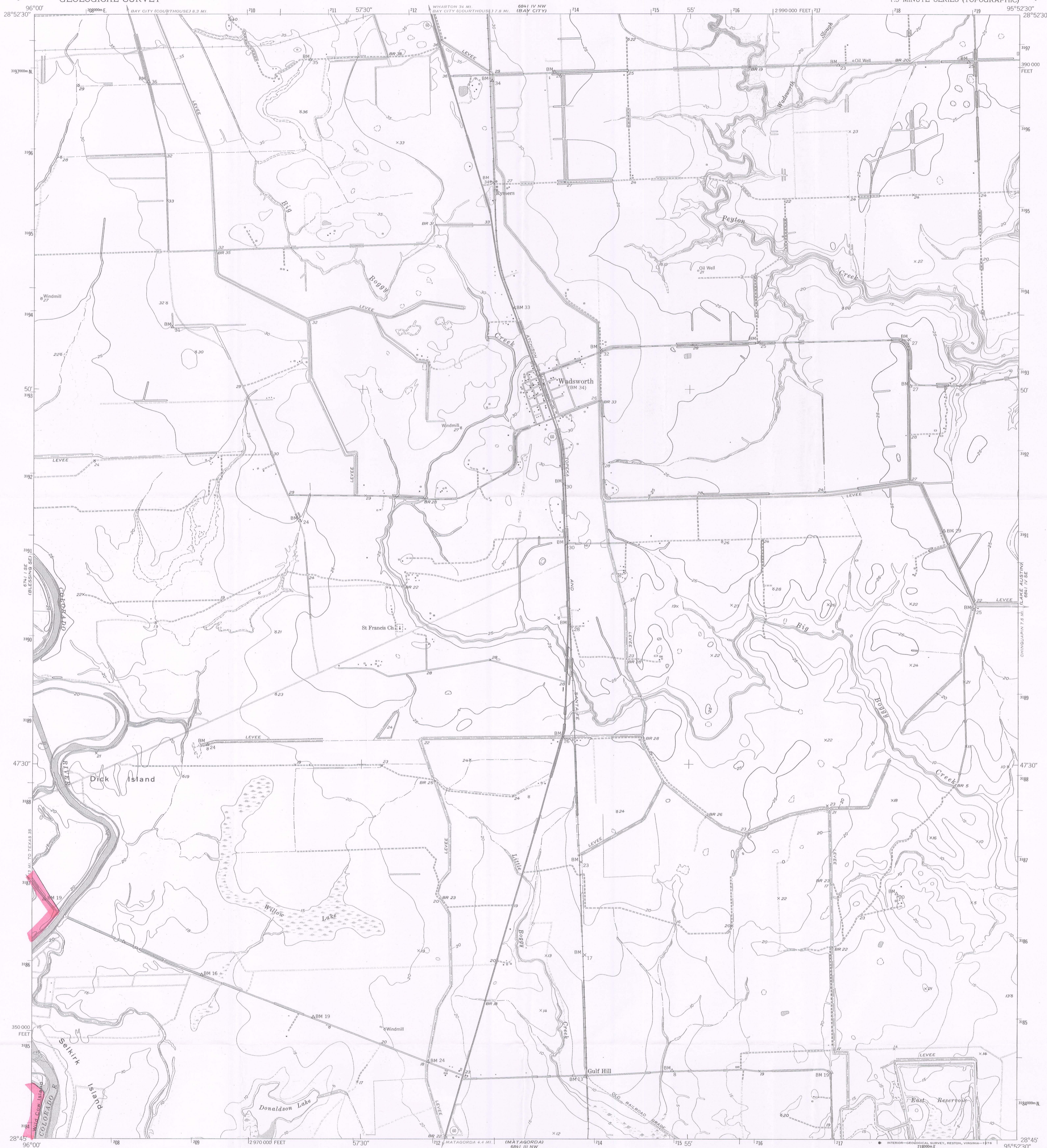
6841 IV SW  
WADSWORTH

UNITED STATES  
DEPARTMENT OF THE INTERIOR  
GEOLOGICAL SURVEY

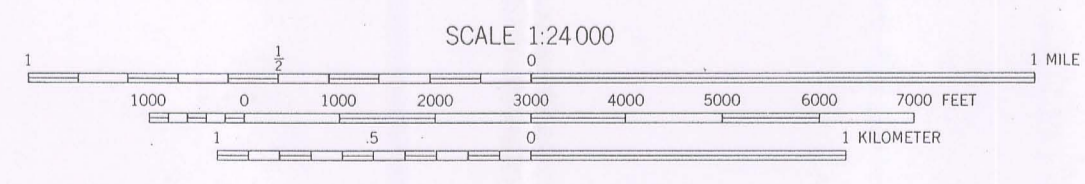
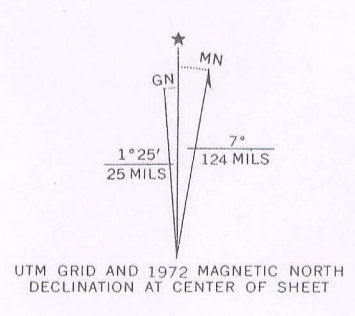
STP Nuclear Operating Company  
TPDES 01908

WADSWORTH QUADRANGLE  
TEXAS-MATAGORDA CO.  
7.5 MINUTE SERIES (TOPOGRAPHIC)

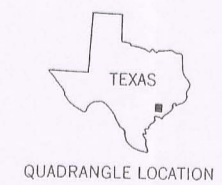
6841 IV NE  
WADSWORTH



Mapped, edited, and published by the Geological Survey  
Control by USGS, USCGS, and USCE  
Culture and drainage in part compiled from aerial photographs  
taken 1946-1947. Topography by plane-table surveys 1951-1952,  
and in part by U. S. Corps of Engineers  
Polyconic projection. 1927 North American datum  
10,000-foot grid based on Texas coordinate system,  
south central zone  
1000-meter Universal Transverse Mercator grid ticks,  
zone 15, shown in blue  
Revisions shown in purple compiled from aerial photographs  
taken 1972. This information not field checked



CONTOUR INTERVAL 5 FEET  
NATIONAL GEODETIC VERTICAL DATUM OF 1929



ROAD CLASSIFICATION  
Heavy-duty 4 LANE 16 LANE Light-duty  
Medium-duty 4 LANE 16 LANE Unimproved dirt  
U. S. Route Slate Route

D-07

WADSWORTH, TEX.  
N2845-W9552.5/7.5

THIS MAP COMPLIES WITH NATIONAL MAP ACCURACY STANDARDS  
FOR SALE BY U. S. GEOLOGICAL SURVEY, DENVER, COLORADO 80225, OR RESTON, VIRGINIA 22092  
A FOLDER DESCRIBING TOPOGRAPHIC MAPS AND SYMBOLS IS AVAILABLE ON REQUEST

1952  
PHOTOREVISED 1972  
AMS 6841 IV SW-SERIES V882