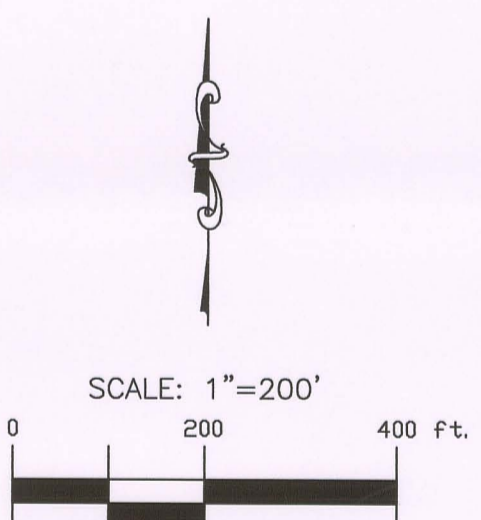
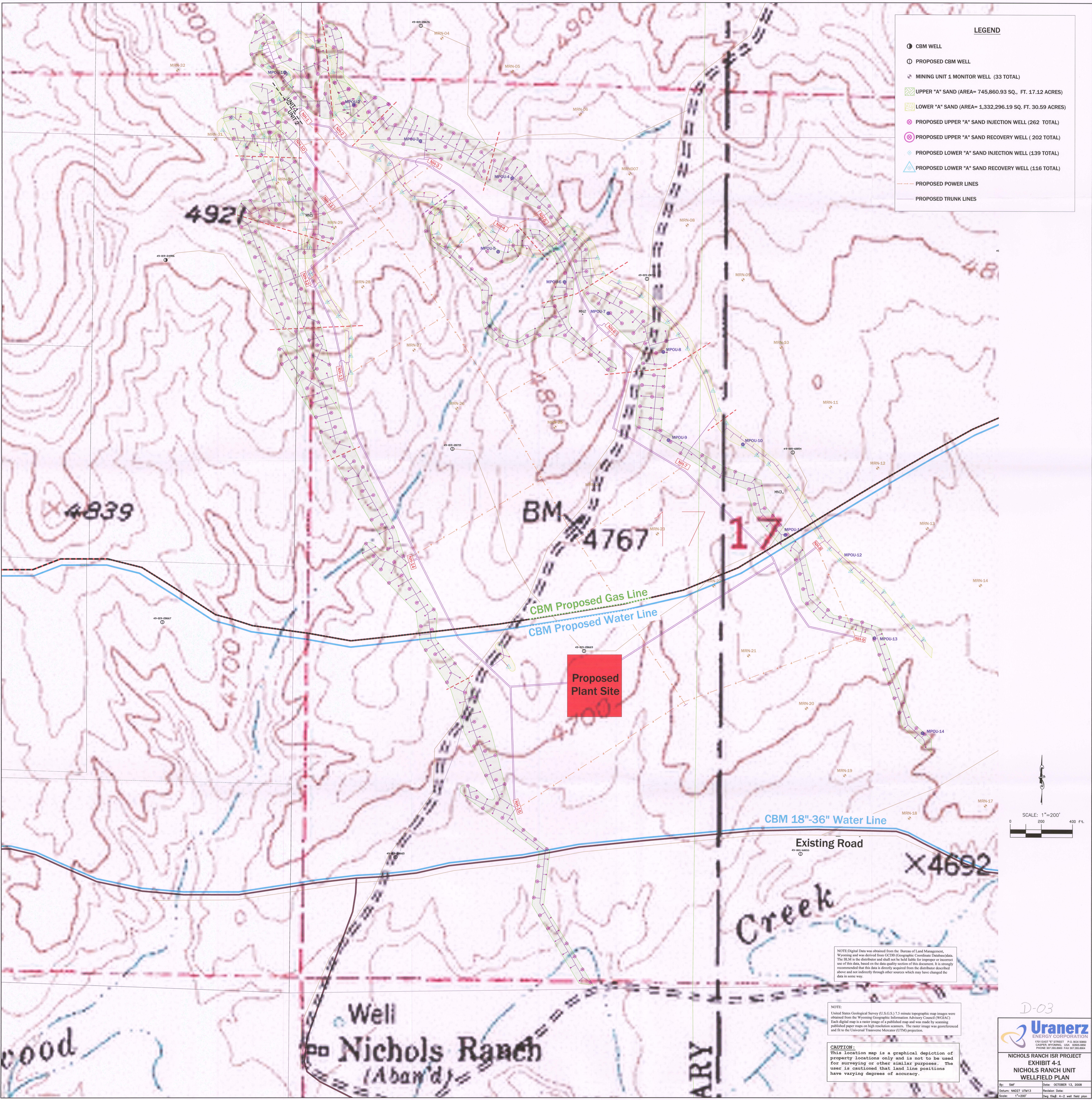


LEGEND

- CBM WELL
- PROPOSED CBM WELL
- ◆ MINING UNIT 1 MONITOR WELL (33 TOTAL)
- ▨ UPPER "A" SAND (AREA= 745,860.93 SQ. FT. 17.12 ACRES)
- ▩ LOWER "A" SAND (AREA= 1,332,296.19 SQ. FT. 30.59 ACRES)
- ⊕ PROPOSED UPPER "A" SAND INJECTION WELL (262 TOTAL)
- ⊖ PROPOSED UPPER "A" SAND RECOVERY WELL (202 TOTAL)
- ◆ PROPOSED LOWER "A" SAND INJECTION WELL (139 TOTAL)
- ▲ PROPOSED LOWER "A" SAND RECOVERY WELL (116 TOTAL)
- - - PROPOSED POWER LINES
- - - PROPOSED TRUNK LINES



NOTE: Digital Data was obtained from the Bureau of Land Management, Wyoming and was derived from CCBM (Geographic Coordinate Database) data. The BLM is the distributor and shall not be held liable for improper or incorrect use of this data, based on the data quality section of this document. It is strongly recommended that this data is directly acquired from the distributor described above and not indirectly through other sources which may have changed the data in some way.

NOTE: United States Geological Survey (U.S.G.S.) 7.5 minute topographic map images were obtained from the Wyoming Geographic Information Advisory Council (WGIAC). Each digital map is a raster image of a published map and was made by scanning published paper maps on high resolution scanners. The raster image was georeferenced and fit to the Universal Transverse Mercator (UTM) projection.

CAUTION: This location map is a graphical depiction of property locations only and is not to be used for surveying or other similar purposes. The user is cautioned that land line positions have varying degrees of accuracy.

D-03

Uranerz
ENERGY CORPORATION
1701 EAST 9TH STREET P.O. BOX 2000
CASP, WYOMING 82401
PHONE: 307.258.9900 FAX: 307.258.8504

NICHOLS RANCH ISR PROJECT
EXHIBIT 4-1
NICHOLS RANCH UNIT
WELLFIELD PLAN

By: SWF Date: OCTOBER 13, 2008
Datum: NAD83 UTM13 Revision: 001
Scale: 1"=200' Day: 04-2 well field plan