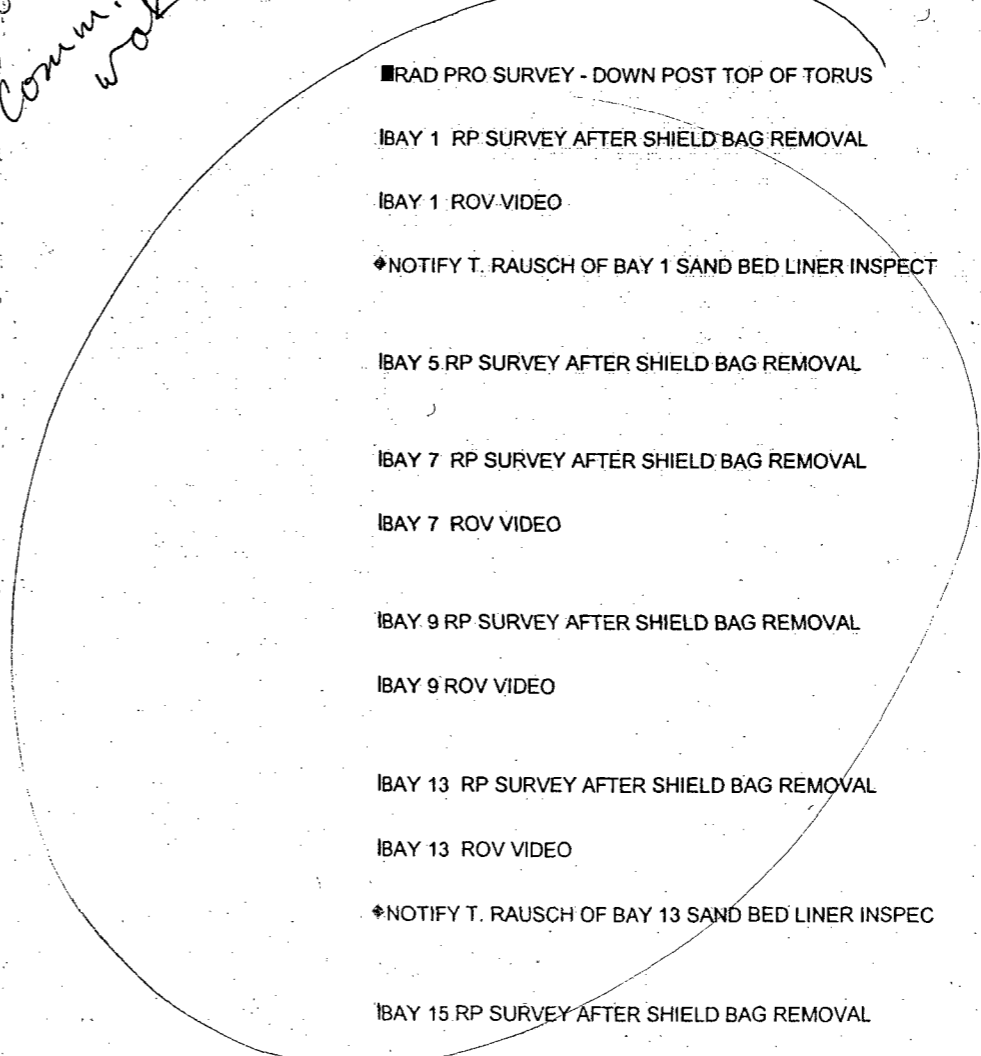


Activity ID	DISP	SPL	MILE	SUPV	P4	SWIN	Activity Description	Orig Dur	Early Start	Early Finish	Total Float	2008																													
												OCT							NOV																						
												17	18	19	20	21	22	23	24	25	26	27	28	29	30	31	1	2	3	4	5	6	7	8	9	10	11	12	13	14	15
2088495																																									
J208849501	T	4	12	OEPB		PC	LEAKAGE MONITOR TORUS, SANDBEDS & RX DRAIN	3	29OCT08 02:00	29OCT08 04:59	210	■LEAKAGE MONITOR TORUS, SANDBEDS & RX DRAIN																													
J208849502	T	4	12	OEPB		PC	LEAKAGE MONITOR TORUS, SANDBEDS & RX DRAIN	3	29OCT08 05:00	29OCT08 07:59	210	■LEAKAGE MONITOR TORUS, SANDBEDS & RX DRAIN																													
J208849503	T	4	12	OEPB		PC	LEAKAGE MONITOR TORUS, SANDBEDS & RX DRAIN	3	29OCT08 08:00	29OCT08 10:59	210	■LEAKAGE MONITOR TORUS, SANDBEDS & RX DRAIN																													
J208849504	T	4	12	OEPB		PC	LEAKAGE MONITOR TORUS, SANDBEDS & RX DRAIN	3	29OCT08 11:00	29OCT08 13:59	210	■LEAKAGE MONITOR TORUS, SANDBEDS & RX DRAIN																													
J208849505	T	4	12	OEPB		PC	LEAKAGE MONITOR TORUS, SANDBEDS & RX DRAIN	3	29OCT08 14:00	29OCT08 16:59	210	■LEAKAGE MONITOR TORUS, SANDBEDS & RX DRAIN																													
J208849506	T	4	12	OEPB		PC	LEAKAGE MONITOR TORUS, SANDBEDS & RX DRAIN	3	29OCT08 17:00	29OCT08 19:59	210	■LEAKAGE MONITOR TORUS, SANDBEDS & RX DRAIN																													
J208849507	T	4	12	OEPB		PC	LEAKAGE MONITOR TORUS, SANDBEDS & RX DRAIN	3	29OCT08 20:00	29OCT08 22:59	210	■LEAKAGE MONITOR TORUS, SANDBEDS & RX DRAIN																													
J208849508	T	4	12	OEPB		PC	LEAKAGE MONITOR TORUS, SANDBEDS & RX DRAIN	3	29OCT08 23:00	30OCT08 01:59	210	■LEAKAGE MONITOR TORUS, SANDBEDS & RX DRAIN																													
J208849509	T	4	12	OEPB		PC	LEAKAGE MONITOR TORUS, SANDBEDS & RX DRAIN	3	30OCT08 02:00	30OCT08 04:59	210	■LEAKAGE MONITOR TORUS, SANDBEDS & RX DRAIN																													
J208849510	T	4	12	OEPB		PC	LEAKAGE MONITOR TORUS, SANDBEDS & RX DRAIN	3	30OCT08 05:00	30OCT08 07:59	210	■LEAKAGE MONITOR TORUS, SANDBEDS & RX DRAIN																													
J208849511	T	4	12	OEPB		PC	LEAKAGE MONITOR TORUS, SANDBEDS & RX DRAIN	3	30OCT08 08:00	30OCT08 10:59	210	■LEAKAGE MONITOR TORUS, SANDBEDS & RX DRAIN																													
J208849512	T	4	12	OEPB		PC	LEAKAGE MONITOR TORUS, SANDBEDS & RX DRAIN	3	30OCT08 11:00	30OCT08 13:59	210	■LEAKAGE MONITOR TORUS, SANDBEDS & RX DRAIN																													
2088903																																									
J2088903A3	T	4	13	OPRF	H25	PC	RAD PRO SURVEY - DOWN POST TOP OF TORUS	6	27OCT08 17:00	27OCT08 22:59	310	■RAD PRO SURVEY - DOWN POST TOP OF TORUS																													
J2088903R5	T	4	13	OPRF	H25	PC	BAY 1 RP SURVEY AFTER SHIELD BAG REMOVAL	1	27OCT08 17:00	27OCT08 17:59	315	IBAY 1 RP SURVEY AFTER SHIELD BAG REMOVAL																													
J2088903R6	T	4	13	OPRF	H25	PC	BAY 1 ROV VIDEO	1	27OCT08 17:00	27OCT08 17:59	315	IBAY 1 ROV VIDEO																													
J2088903TR	T	4	XX	OCC	H25	PC	NOTIFY T. RAUSCH OF BAY 1 SAND BED LINER INSPECT	0	27OCT08 17:00		1,566	◆NOTIFY T. RAUSCH OF BAY 1 SAND BED LINER INSPECT																													
2088905																																									
J2088905R5	T	4	13	OPRF	H25	PC	BAY 5 RP SURVEY AFTER SHIELD BAG REMOVAL	1	27OCT08 17:00	27OCT08 17:59	315	IBAY 5 RP SURVEY AFTER SHIELD BAG REMOVAL																													
2088906																																									
J2088906R5	T	4	13	OPRF	H25	PC	BAY 7 RP SURVEY AFTER SHIELD BAG REMOVAL	1	27OCT08 17:00	27OCT08 17:59	315	IBAY 7 RP SURVEY AFTER SHIELD BAG REMOVAL																													
J2088906R6	T	4	13	OPRF	H25	PC	BAY 7 ROV VIDEO	1	27OCT08 17:00	27OCT08 17:59	315	IBAY 7 ROV VIDEO																													
2088918																																									
J2088918R5	T	4	13	OPRF	H25	PC	BAY 9 RP SURVEY AFTER SHIELD BAG REMOVAL	1	27OCT08 17:00	27OCT08 17:59	315	IBAY 9 RP SURVEY AFTER SHIELD BAG REMOVAL																													
J2088918R6	T	4	13	OPRF	H25	PC	BAY 9 ROV VIDEO	1	27OCT08 17:00	27OCT08 17:59	315	IBAY 9 ROV VIDEO																													
2088920																																									
J2088920R5	T	4	13	OPRF	H25	PC	BAY 13 RP SURVEY AFTER SHIELD BAG REMOVAL	1	27OCT08 17:00	27OCT08 17:59	315	IBAY 13 RP SURVEY AFTER SHIELD BAG REMOVAL																													
J2088920R6	T	4	13	OPRF	H25	PC	BAY 13 ROV VIDEO	1	27OCT08 17:00	27OCT08 17:59	315	IBAY 13 ROV VIDEO																													
J2088920TR	T	4	XX	OCC	H25	PC	NOTIFY T. RAUSCH OF BAY 13 SAND BED LINER INSPEC	0	27OCT08 17:00		1,566	◆NOTIFY T. RAUSCH OF BAY 13 SAND BED LINER INSPEC																													
2088924																																									
J2088924R5	T	4	13	OPRF	H25	PC	BAY 15 RP SURVEY AFTER SHIELD BAG REMOVAL	1	27OCT08 17:00	27OCT08 17:59	315	IBAY 15 RP SURVEY AFTER SHIELD BAG REMOVAL																													

Not on committed work list



c/19

Activity ID	DISP	SPL	MILE	SUPV	P4	SWIN	Activity Description	Orig Dur	Early Start	Early Finish	Total Float
J2088924R6	T	4	13	OPRF	H25	PC	BAY 15 ROV VIDEO	1	27OCT08 17:00	27OCT08 17:59	315
2088926											
J2088926R5	T	4	13	OPRF	H25	PC	BAY 19 RP SURVEY AFTER SHIELD BAG REMOVAL	1	27OCT08 17:00	27OCT08 17:59	315
J2088926R6	T	4	13	OPRF	H25	PC	BAY 19 ROV VIDEO	1	27OCT08 17:00	27OCT08 17:59	315
2092866											
J2092866R5	T	4	13	OPRF	H25	PC	BAY 11 RP SURVEY AFTER SHIELD BAG REMOVAL	1	27OCT08 17:00	27OCT08 17:59	315
J2092866R6	T	4	13	OPRF	H25	PC	BAY 11 ROV VIDEO	1	27OCT08 17:00	27OCT08 17:59	315
2092867											
J2092867R5	T	4	13	OPRF	H25	PC	BAY 3 RP SURVEY AFTER SHIELD BAG REMOVAL	1	27OCT08 17:00	27OCT08 17:59	315
J2092867R6	T	4	13	OPRF	H25	PC	BAY 3 ROV VIDEO	1	27OCT08 17:00	27OCT08 17:59	315
2092868											
J2092868R5	T	4	13	OPRF	H25	PC	BAY 17 RP SURVEY AFTER SHIELD BAG REMOVAL	1	27OCT08 17:00	27OCT08 17:59	315
J2092868R6	T	4	13	OPRF	H25	PC	BAY 17 ROV VIDEO	1	27OCT08 17:00	27OCT08 17:59	315
288905R											
J288905R6	T	4	13	OPRF	H25	PC	BAY 5 ROV VIDEO	1	27OCT08 17:00	27OCT08 17:59	315
0805191											
R080519101	K	5	06	OMMT		C2	OPEN & INSPECT C ECK VALVE. PERFORM IN3 TEST P	24	29OCT08 04:00	30OCT08 03:59	21
R080519102	K	5	06	OMMT		C2	POST-MAINTENANCE TEST	1	30OCT08 17:00	30OCT08 17:59	28
2015085											
C201509501	K	5	14	OVC1		CS	ISI-241 TORS PRP NQ-1-0049 12"PIPE	6	27OCT08 20:00*	28OCT08 01:59	291
C201509503	K	5	14	OVC1		CS	ISI-241 TORS PRP NQ-1-0049 12"PIPE	10	29OCT08 09:00*	29OCT08 18:59	260
C201509502	K	5	14	NDE4		CS	ISI-241 TORS NDE NQ-1-0049 12"PIPE	6	29OCT08 19:00	30OCT08 00:59	260
C201509505	K	5	14	NDE4		CS	ISI-241 TORS NDE VT	6	30OCT08 01:00	30OCT08 06:59	260
C201509506	K	5	14	NDE4		CS	ISI-241 TORS NDE VT	3	30OCT08 07:00	30OCT08 09:59	260
C201509504	K	5	14	OMW3		CS	ISI-241 TORUS PAINT NQ-1-0049 12"PIPE	8	30OCT08 10:00	30OCT08 17:59	260
2015735											
C201573501	K	6	10	OVM1		CD	421 REPLACE EXPANSION JOINTS	120	29OCT08 10:00	03NOV08 09:59	118
2017426											
C201742604	K	5	10	OMM2		SW	535 HEAT TRACE REMOVAL ACTIVITY	2	03NOV08 19:00	03NOV08 20:59	30
C201742601	K	5	10	OMM3		SW	535 REMOVE/ REPLACE V-3-41 FOR INSPECTION	16	03NOV08 21:00	04NOV08 12:59	30
C201742602	K	5	10	NDE4		SW	535 LRA (VISUAL) INSPECTION OF V-3-41	16	04NOV08 13:00	05NOV08 04:59	30
C201742603	K	5	10	NDE4		SW	535 (HARDNESS TESTING) INSPECTION OF V-3-41	16	05NOV08 05:00	05NOV08 20:59	30
J2017426A1	K	5	10	OMM3		SW	535 REPLACE V-3-41 FOR INSPECTION	16	05NOV08 21:00	06NOV08 12:59	30

IBAY 15 ROV VIDEO

IBAY 19 RP SURVEY AFTER SHIELD BAG REMOVAL

IBAY 19 ROV VIDEO

IBAY 11 RP SURVEY AFTER SHIELD BAG REMOVAL

IBAY 11 ROV VIDEO

IBAY 3 RP SURVEY AFTER SHIELD BAG REMOVAL

IBAY 3 ROV VIDEO

IBAY 17 RP SURVEY AFTER SHIELD BAG REMOVAL

IBAY 17 ROV VIDEO

IBAY 5 ROV VIDEO

OPEN & INSPECT C ECK VALVE. PERFORM IN3 TEST P

IPOST-MAINTENANCE TEST

ISI-241 TORS PRP NQ-1-0049 12"PIPE

ISI-241 TORS PRP NQ-1-0049 12"PIPE

ISI-241 TORS NDE NQ-1-0049 12"PIPE

ISI-241 TORS NDE VT

ISI-241 TORS NDE VT

ISI-241 TORUS PAINT NQ-1-0049 12"PIPE

421 REPLACE EXPANSION JOINTS

535 HEAT TRACE REMOVAL ACTIVITY

535 REMOVE/ REPLACE V-3-41 FOR INSPECTION

535 LRA (VISUAL) INSPECTION OF V-3-41

535 (HARDNESS TESTING) INSPECTION OF V-3-41

535 REPLACE V-3-41 FOR INSPECTION

Activity ID	DISP	SPL	MILE	SUPV	P4	SWIN	Activity Description	Orig Dur	Early Start	Early Finish	Total Float	2008																													
												OCT										NOV																			
C201742605	K	5	10	OMM2		SW	535 HEAT TRACE INSTALLATION ACT.	2	06NOV08 13:00	06NOV08 14:59	30	17	18	19	20	21	22	23	24	25	26	27	28	29	30	31	1	2	3	4	5	6	7	8	9	10	11	12	13	14	15
2017682																																									
C201768201	K	2	10	OMM3		RW	V-16-230 REPLACE VALVE (LRA)	1	02NOV08 08:00	02NOV08 08:59	134																														
C201768202	K	2	10	OEPP		RW	V-16-230 INSPECT VALVE INTERNALS	1	02NOV08 09:00	02NOV08 09:59	137																														
C201768204	K	2	10	NDE4		RW	V-16-230 VT-3 INSPECTION	4	02NOV08 09:00	02NOV08 12:59	134																														
C201768203	K	2	10	OMM3		RW	V-16-230 PMT	1	07NOV08 19:00	07NOV08 19:59	12																														
2017689																																									
C201768901	K	6	10	OMM3		CW	V-33-1 REPLACE VALVE (LRA)	1	26OCT08 09:00	26OCT08 09:59	183																														
C201768902	K	6	14	OEPP		CW	V-33-1 INSPECT VALVE INTERNALS	1	02NOV08 20:00	02NOV08 20:59	185																														
C201768903	K	6	14	OMM3		CW	V-33-1 PMT	1	02NOV08 20:00	02NOV08 20:59	184																														
C201768904	K	6	14	NDE4		CW	V-33-1 VT-3 INSPECTION	4	02NOV08 20:00	02NOV08 23:59	182																														
2026131																																									
R202613101	K	3	05	OMM2		XF	AUX TRANS(BANK4) ELECTRICAL TESTS	32	25OCT08 00:00	26OCT08 07:59	165																														
R202613102	K	3	05	OMVS		XF	AUX XFORMER C8-1332 ERECT SCAFFOLD	8	25OCT08 00:00	25OCT08 07:59	144																														
R202613104	K	3	05	OMM2		XF	AUX XFMR REMOVE BUSS LINKS (ISOPHASE)	16	25OCT08 08:00	25OCT08 23:59	144																														
R202613105	K	3	05	OMM2		XF	AUX XFMR SUPPORT GROUNDING APPLICATION	3	26OCT08 00:00	26OCT08 02:59	144																														
R202613108	K	3	05	OMM2		XF	AUX XFMR REMOVE GRD RESISTOR CAGE	16	26OCT08 03:00	26OCT08 18:59	144																														
R202613109	K	3	05	OMM2		XF	AUX XFMR REPLACE COOLING FANS & MOTORS	8	26OCT08 04:00	26OCT08 11:59	151																														
R202613106	K	3	05	OMM2		XF	AUX XFMR SUPPORT GROUNDING REMOVAL	2	26OCT08 19:00	26OCT08 20:59	144																														
R202613107	K	3	05	OMM2		XF	AUX XFMR REINSTALL BUSS LINKS	8	26OCT08 21:00	27OCT08 04:59	144																														
R202613103	K	3	16	OMVS		XF	AUX XFORMER C8-1332 REMOVE SCAFFOLD	4	29OCT08 10:00*	29OCT08 13:59	409																														
R202613110	K	3	16	SSV5		XF	AUX XFMR OPS POST MAINTENANCE TESTS	1	29OCT08 14:00	29OCT08 14:59	409																														
2033700																																									
R203370001	K	3	07	OMM2		XF	SU TRANS. BANK 6 ELECTRICAL TESTS	32	01NOV08 11:00	02NOV08 18:59	119																														
R203370002	K	3	07	OMM2		XF	SU TRANS BAKN 6 REMOVE GRD RESISTOR CAGE	16	01NOV08 11:00	02NOV08 02:59	135																														
R203370003	K	3	07	OMM2		XF	S/U TRANS SB REPLACE COOLING FANS	8	01NOV08 11:00	01NOV08 18:59	143																														
R203370004	K	3	16	SSV5		XF	S/U TRANS SB OPS POST MAINTENANCE TESTS	1	05NOV08 19:00	05NOV08 19:59	236																														
2054006																																									
R205400601	P	4	P	OMM2		A1	VERIFY NEW CABLE AVAILABLE FOR P-37-1	2	26JUN08 08:00	26JUN08 09:59	3,061																														
R205400602	K	4	05	OMM2		A1	PERFORM A HIGH VOLTAGE TEST ON CABLE 13-1	12	27OCT08 20:00	28OCT08 07:59	99																														

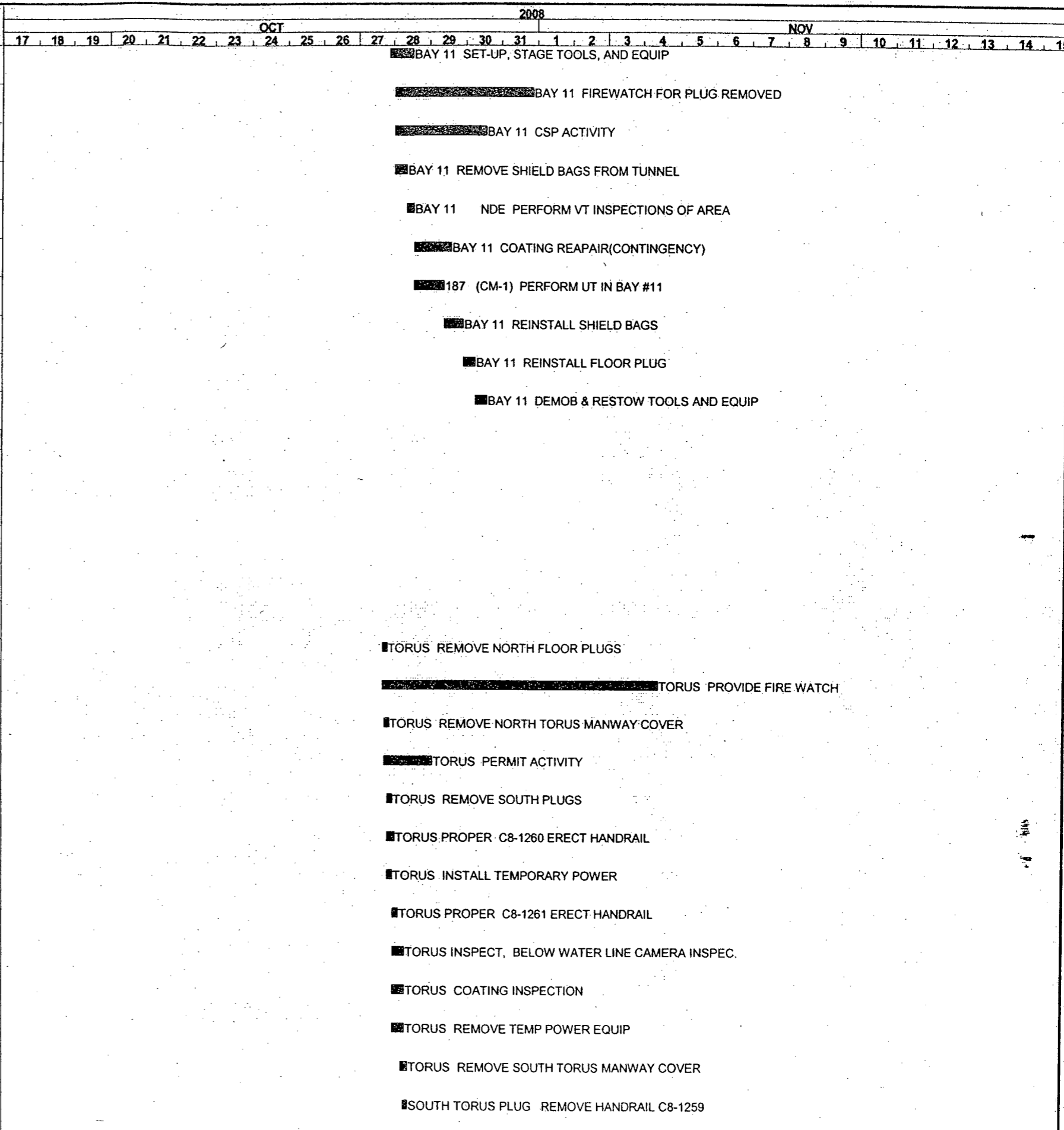
2008											
OCT										NOV	
535 HEAT TRACE INSTALLATION ACT.											
IV-16-230 REPLACE VALVE (LRA)											
IV-16-230 INSPECT VALVE INTERNALS											
IV-16-230 VT-3 INSPECTION											
IV-16-230 PMT											
IV-33-1 REPLACE VALVE (LRA)											
IV-33-1 INSPECT VALVE INTERNALS											
IV-33-1 PMT											
IV-33-1 VT-3 INSPECTION											
AUX TRANS(BANK4) ELECTRICAL TESTS											
AUX XFORMER C8-1332 ERECT SCAFFOLD											
AUX XFMR REMOVE BUSS LINKS (ISOPHASE)											
AUX XFMR SUPPORT GROUNDING APPLICATION											
AUX XFMR REMOVE GRD RESISTOR CAGE											
AUX XFMR REPLACE COOLING FANS & MOTORS											
AUX XFMR SUPPORT GROUNDING REMOVAL											
AUX XFMR REINSTALL BUSS LINKS											
AUX XFORMER C8-1332 REMOVE SCAFFOLD											
AUX XFMR OPS POST MAINTENANCE TESTS											
SU TRANS. BANK 6 ELECTRICAL TESTS											
SU TRANS BAKN 6 REMOVE GRD RESISTOR CAGE											
S/U TRANS SB REPLACE COOLING FANS											
S/U TRANS SB OPS POST MAINTENANCE TESTS											
PERFORM A HIGH VOLTAGE TEST ON CABLE 13-1											

Activity ID	DISP	SPL	MILE	SUPV	P4	SWIN	Activity Description	Orig Dur	Early Start	Early Finish	Total Float	2008																														
												OCT														NOV																
												17	18	19	20	21	22	23	24	25	26	27	28	29	30	31	1	2	3	4	5	6	7	8	9	10	11	12	13	14	15	
2081511																																										
R208151103	K	6	10	OMVM		CW	Y-3-14 INSPECT 72" N-INLET EX-JOINT	6	25OCT08 22:00	26OCT08 03:59	158	■Y-3-14 INSPECT 72" N-INLET EX-JOINT																														
R208151104	K	6	10	OMVM		CW	Y-3-15 INSPECT 72" S-INLET EX-JOINT	6	26OCT08 04:00	26OCT08 09:59	158	■Y-3-15 INSPECT 72" S-INLET EX-JOINT																														
R208151109	K	6	10	OMVM		CW	Y-3-20 INSPECT 60" N-OUTLET EX-JOINT	6	26OCT08 10:00	26OCT08 15:59	158	■Y-3-20 INSPECT 60" N-OUTLET EX-JOINT																														
R208151110	K	6	10	OMVM		CW	Y-3-21 INSPECT 60" S-OUTLET EX-JOINT	6	26OCT08 16:00	26OCT08 21:59	158	■Y-3-21 INSPECT 60" S-OUTLET EX-JOINT																														
R208151115	K	6	10	OMVM		CW	Y-3-29 INSPECT 72" N-OUTLET EX-JOINT	6	26OCT08 22:00	27OCT08 03:59	158	■Y-3-29 INSPECT 72" N-OUTLET EX-JOINT																														
R208151116	K	6	10	OMVM		CW	Y-3-30 INSPECT 72" S-OUTLET EX-JOINT	6	27OCT08 04:00	27OCT08 09:59	158	■Y-3-30 INSPECT 72" S-OUTLET EX-JOINT																														
R208151101	K	6	14	OMVM		CW	Y-3-12 INSPECT 72" N-INLET EX-JOINT	6	27OCT08 17:00	27OCT08 22:59	287	■Y-3-12 INSPECT 72" N-INLET EX-JOINT																														
R208151102	K	6	14	OMVM		CW	Y-3-13 INSPECT 72" S-INLET EX-JOINT	6	27OCT08 21:00*	28OCT08 02:59	283	■Y-3-13 INSPECT 72" S-INLET EX-JOINT																														
R208151107	K	6	14	OMVM		CW	Y-3-18 INSPECT 60" N-OUTLET EX-JOINT	6	27OCT08 23:00	28OCT08 04:59	287	■Y-3-18 INSPECT 60" N-OUTLET EX-JOINT																														
R208151108	K	6	14	OMVM		CW	Y-3-19 INSPECT 60" S-OUTLET EX-JOINT	6	28OCT08 03:00	28OCT08 08:59	283	■Y-3-19 INSPECT 60" S-OUTLET EX-JOINT																														
R208151113	K	6	14	OMVM		CW	Y-3-27 INSPECT 72" N-OUTLET EX-JOINT	6	28OCT08 05:00	28OCT08 10:59	287	■Y-3-27 INSPECT 72" N-OUTLET EX-JOINT																														
R208151114	K	6	14	OMVM		CW	Y-3-28 INSPECT 72" S-OUTLET EX-JOINT	6	28OCT08 09:00	28OCT08 14:59	283	■Y-3-28 INSPECT 72" S-OUTLET EX-JOINT																														
R208151105	K	6	14	OMVM		CW	Y-3-16 INSPECT 72" N-INLET EX-JOINT	6	29OCT08 08:00	29OCT08 13:59	265	■Y-3-16 INSPECT 72" N-INLET EX-JOINT																														
R208151106	K	6	14	OMVM		CW	Y-3-17 INSPECT 72" S-INLET EX-JOINT	6	29OCT08 08:00	29OCT08 13:59	265	■Y-3-17 INSPECT 72" S-INLET EX-JOINT																														
R208151111	K	6	14	OMVM		CW	Y-3-22 INSPECT 60" N-OUTLET EX-JOINT	6	29OCT08 14:00	29OCT08 19:59	265	■Y-3-22 INSPECT 60" N-OUTLET EX-JOINT																														
R208151112	K	6	14	OMVM		CW	Y-3-23 INSPECT 60" S-OUTLET EX-JOINT	6	29OCT08 14:00	29OCT08 19:59	265	■Y-3-23 INSPECT 60" S-OUTLET EX-JOINT																														
R208151117	K	6	14	OMVM		CW	Y-3-31 INSPECT 72" N-OUTLET EX-JOINT	6	29OCT08 20:00	30OCT08 01:59	265	■Y-3-31 INSPECT 72" N-OUTLET EX-JOINT																														
R208151118	K	6	14	OMVM		CW	Y-3-32 INSPECT 72" S-OUTLET EX-JOINT	6	30OCT08 02:00*	30OCT08 07:59	259	■Y-3-32 INSPECT 72" S-OUTLET EX-JOINT																														
2083515																																										
R208351505	K	6	10	OMVM		CD	Y-2-8 INSPECT EXPANSION JOINT	1	29OCT08 13:00	29OCT08 13:59	226	■Y-2-8 INSPECT EXPANSION JOINT																														
R208351506	K	6	10	OMVM		CD	Y-2-9 INSPECT EXPANSION JOINT	1	29OCT08 13:00	29OCT08 13:59	226	■Y-2-9 INSPECT EXPANSION JOINT																														
R208351501	K	6	10	OMVM		CD	Y-2-10 INSPECT EXPANSION JOINT	1	29OCT08 16:00	29OCT08 16:59	222	■Y-2-10 INSPECT EXPANSION JOINT																														
R208351502	K	6	10	OMVM		CD	Y-2-11 INSPECT EXPANSION JOINT	1	29OCT08 17:00	29OCT08 17:59	222	■Y-2-11 INSPECT EXPANSION JOINT																														
R208351503	K	6	10	OMVM		CD	Y-2-12 INSPECT EXPANSION JOINT	1	29OCT08 17:00*	29OCT08 17:59	221	■Y-2-12 INSPECT EXPANSION JOINT																														
R208351504	K	6	10	OMVM		CD	Y-2-13 INSPECT EXPANSION JOINT	1	29OCT08 18:00*	29OCT08 18:59	221	■Y-2-13 INSPECT EXPANSION JOINT																														
2089742																																										
R208974201	K	6	14	NDE4		CW	V-3-31 VISUAL INSPECTION OF V-3-31 (C-NORTH)	2	29OCT08 08:00	29OCT08 09:59	280	■IV-3-31 VISUAL INSPECTION OF V-3-31 (C-NORTH)																														
R208974202	K	6	14	NDE4		CW	V-3-31 NDE VT-3 INSPECTION	1	02NOV08 22:00	02NOV08 22:59	172	■IV-3-31 NDE VT-3 INSPECTION																														

Activity ID	DISP	SPL	MILE	SUPV	P4	SWIN	Activity Description	Orig Dur	Early Start	Early Finish	Total Float	2008																													
												OCT							NOV																						
												17	18	19	20	21	22	23	24	25	26	27	28	29	30	31	1	2	3	4	5	6	7	8	9	10	11	12	13	14	15
2089997																																									
R208999701	K	6	10	OMM3		CW	V-3-793 INSPECT VALVE 1R22 LRA	4	25OCT08 16:00	25OCT08 19:59	196	■V-3-793 INSPECT VALVE 1R22 LRA																													
R208999702	K	6	14	NDE4		CW	V-3-793 PERFORM INTERNAL INSPECTION	1	25OCT08 20:00	25OCT08 20:59	349	IV-3-793 PERFORM INTERNAL INSPECTION																													
R208999704	K	6	14	NDE4		CW	V-3-793 NDE VT-3 INSPECTION LICENSE RENEWA	4	25OCT08 21:00	26OCT08 00:59	349	■V-3-793 NDE VT-3 INSPECTION LICENSE RENEWA																													
R208999703	K	6	10	OMM3		CW	V-3-793 PMT	1	31OCT08 12:00	31OCT08 12:59	64	IV-3-793 PMT																													
2090021																																									
R209002102	K	6	14	OEPP		CW	V-3-799 PERFORM VISUAL INSPECTION	1	29OCT08 05:00	29OCT08 05:59	292	IV-3-799 PERFORM VISUAL INSPECTION																													
R209002104	K	6	14	NDE4		CW	V-3-799 NDE VT-3 INSPECTION	4	29OCT08 06:00	29OCT08 09:59	292	■V-3-799 NDE VT-3 INSPECTION																													
R209002101	R	6		OMM3		MI	V-3-799 INSPECT VALVE 1R22 LRA	4	31OCT08 14:00	31OCT08 17:59	228	■V-3-799 INSPECT VALVE 1R22 LRA																													
R209002103	K	6	14	OMM3		CW	V-3-799 PMT	1	02NOV08 22:00	02NOV08 22:59	177	IV-3-799 PMT																													
2090043																																									
R209004302	K	5	14	OEPP		SW	V-3-986 INTERNAL INSPECTION LRA	2	03NOV08 19:00	03NOV08 20:59	85	■V-3-986 INTERNAL INSPECTION LRA																													
R209004304	K	5	14	NDE4		SW	V-3-986 VT-3 INSPECTION	1	03NOV08 21:00	03NOV08 21:59	85	IV-3-986 VT-3 INSPECTION																													
R209004301	K	5	14	OMM3		SW	V-3-986 INSPECT VALVE 1R22 LRA	8	03NOV08 22:00	04NOV08 05:59	85	■V-3-986 INSPECT VALVE 1R22 LRA																													
R209004303	K	5	14	OMM3		SW	V-3-986 PMT	1	07NOV08 19:00	07NOV08 19:59	66	IV-3-986 PMT																													
2090057																																									
R209005701	K	6	10	OMM3		CW	V-3-112 INSPECT VALVE 1R22 LRA	8	25OCT08 21:00	26OCT08 04:59	183	■V-3-112 INSPECT VALVE 1R22 LRA																													
R209005702	K	6	10	OEPP		CW	V-3-112 INTERNAL INSPECTION	2	26OCT08 05:00	26OCT08 06:59	186	■V-3-112 INTERNAL INSPECTION																													
R209005704	K	6	14	NDE4		CW	V-3-112 VT-3 INSPECTION	1	26OCT08 07:00	26OCT08 07:59	366	IV-3-112 VT-3 INSPECTION																													
R209005703	K	6	14	OMM3		CW	V-3-112 PMT	1	02NOV08 20:00	02NOV08 20:59	184	IV-3-112 PMT																													
2090060																																									
R209006001	K	6	14	NDE4		CW	V-3-32 NDE VTSPECTION OF V-3-32 (1C SOUTH	4	29OCT08 08:00	29OCT08 11:59	274	■V-3-32 NDE VTSPECTION OF V-3-32 (1C SOUTH																													
R209006002	K	6	14	NDE4		CW	V-3-32 NDE VT-3 INSPECTION	4	29OCT08 12:00	29OCT08 15:59	274	■V-3-32 NDE VT-3 INSPECTION																													
2091382																																									
R209138201	K	4	10	NDE4	MSV	MSD	WELD NECK FLANGE VT-1 INSPECTION V-1-177	6	29OCT08 23:00	30OCT08 04:59	192	■WELD NECK FLANGE VT-1 INSPECTION V-1-177																													
R209138202	K	4	10	OMW3	MSV	MSD	V-1-177 PREP PIPE FOR UT	4	30OCT08 05:00	30OCT08 08:59	192	■V-1-177 PREP PIPE FOR UT																													
R209138203	K	4	10	NDE4	MSV	MSD	V-1-177 NDE PERFORM UT	6	30OCT08 09:00	30OCT08 14:59	192	■V-1-177 NDE PERFORM UT																													
R209138204	K	4	13	NDE4	MSV	MSD	V-1-177 CLOSE CHILDED AR A2163525	1	30OCT08 15:00	30OCT08 15:59	262	IV-1-177 CLOSE CHILDED AR A2163525																													
2093471																																									
R209347101	T	3	05	OMI3	ST2	A3	ST645.6.017 1C SWITCHGEAR INSPECTION POINTS	4	27OCT08 20:00	27OCT08 23:59	123	■ST645.6.017 1C SWITCHGEAR INSPECTION POINTS																													
2093513																																									
R209351301	T	4	13	OMM3	320	PC	M-888-17 TORUS MONORAIL INSPECTION	4	28OCT08 03:00	28OCT08 06:59	302	■M-888-17 TORUS MONORAIL INSPECTION																													

Activity ID	DISP	SPL	MILE	SUPV	P4	SWIN	Activity Description	Orig Dur	Early Start	Early Finish	Total Float	2008																													
												OCT							NOV																						
												17	18	19	20	21	22	23	24	25	26	27	28	29	30	31	1	2	3	4	5	6	7	8	9	10	11	12	13	14	15
2094317																																									
R209431701	T	4	13	OMI1		MS	V-1-7 (NS03-A); GL 88-14 INST. AIR LEAK TEST.	8	29OCT08 18:00	30OCT08 01:59	267	■V-1-7 (NS03-A); GL 88-14 INST. AIR LEAK TEST.																													
R209431702	K	4	13	SSV5		MS	V-1-7 SUPPORT VALVE STROKE	1	29OCT08 18:00	29OCT08 18:59	283	■IV-1-7 SUPPORT VALVE STROKE																													
2094450																																									
R209445001	T	3	07	OMI3	ST2	A4	ST645.6.017 1D SWITCHGEAR INSPECTION POINTS	2	01NOV08 11:00	01NOV08 12:59	141	■ST645.6.017 1D SWITCHGEAR INSPECTION POINTS																													
2094520																																									
R209452001	T	2	14	OMI1		NI	SRM/IRM JUMPERIN , AND MEGGER (IR) TESTS	12	02NOV08 10:00	02NOV08 21:59	171	■SRM/IRM JUMPERIN , AND MEGGER (IR) TESTS																													
R209452002	K	2	14	OMI1		NI	CABLE RESTORATIO N AND PMT	4	08NOV08 18:00	08NOV08 21:59	31	■CABLE RESTORATIO N AND PMT																													
2094525																																									
R209452504	T	2	14	OMI1		NI	SRM CHAR TEST 2400-SMI-3623.03 (OUTAGE)	5	04NOV08 06:00	04NOV08 10:59	161	■SRM CHAR TEST 2400-SMI-3623.03 (OUTAGE)																													
2094623																																									
R209462303	P	4	P	OMW1		187	BAY 9 SET-UP, STAGE TOOLS, AND EQUIP	16	26JUN08 08:00*	27JUN08 15:59	760																														
R209462301	K	4	13	OMW1		PC	BAY 9 REMOVE FLOOR PLUGS	8	27OCT08 17:00	28OCT08 00:59	224	■BAY 9 REMOVE FLOOR PLUGS																													
R209462302	K	4	13	OMW1		PC	BAY 9 FIREWATCH FOR PLUG REMOVED	92	27OCT08 17:00	31OCT08 12:59	224	■BAY 9 FIREWATCH FOR PLUG REMOVED																													
R209462305	K	4	13	OMW1		PC	BAY 9 REMOVE SHIELD BAGS FROM TUNNEL	8	28OCT08 01:00	28OCT08 08:59	240	■BAY 9 REMOVE SHIELD BAGS FROM TUNNEL																													
R209462304	K	4	13	OMW1		PC	BAY 9 CSP ACTIVITY	60	28OCT08 09:00	30OCT08 20:59	240	■BAY 9 CSP ACTIVITY																													
R209462306	K	4	13	NDE4		PC	BAY 9 NDE PERFORM VT INSPECTIONS OF AREA	8	28OCT08 09:00	28OCT08 16:59	240	■BAY 9 NDE PERFORM VT INSPECTIONS OF AREA																													
R209462311	K	4	13	OMVS		PC	187 MODIFY GRATING PLATFORM (CONT)	8	28OCT08 09:00	28OCT08 16:59	292	■187 MODIFY GRATING PLATFORM (CONT)																													
R209462307	K	4	13	OMW1		PC	BAY 9 COATING REPAIR(CONTINGENCY)	24	28OCT08 17:00	29OCT08 16:59	268	■BAY 9 COATING REPAIR(CONTINGENCY)																													
R209462312	K	4	13	NDE4		PC	187 (CM-1) PERFORM UT INSPECTIONS	12	28OCT08 17:00	29OCT08 04:59	268	■187 (CM-1) PERFORM UT INSPECTIONS																													
R209462309	K	4	14	OMW1		PC	BAY 9 DEMOB & RESTOW TOOLS AND EQUIP	8	29OCT08 05:00	29OCT08 12:59	269	■BAY 9 DEMOB & RESTOW TOOLS AND EQUIP																													
R209462308	K	4	14	OMW1		PC	BAY 9 REINSTALL SHIELD BAGS	12	29OCT08 13:00	30OCT08 00:59	269	■BAY 9 REINSTALL SHIELD BAGS																													
R209462310	K	4	14	OMW1		PC	BAY 9 REINSTALL FLOOR PLUG	8	30OCT08 01:00	30OCT08 08:59	269	■BAY 9 REINSTALL FLOOR PLUG																													
2095467																																									
R209546703	P	4	P	OMW1		187	BAY 17 SET-UP, STAGE TOOLS, AND EQUIP	16	26JUN08 08:00*	27JUN08 15:59	760																														
R209546701	K	4	13	OMW1		PC	BAY 17 REMOVE FLOOR PLUG	8	27OCT08 17:00	28OCT08 00:59	224	■BAY 17 REMOVE FLOOR PLUG																													
R209546702	K	4	13	OMW1		PC	BAY 17 FIREWATCH FOR PLUG REMOVED	92	27OCT08 17:00	31OCT08 12:59	224	■BAY 17 FIREWATCH FOR PLUG REMOVED																													
R209546704	K	4	13	OMW1		PC	BAY 17 CSP ACTIVITY	60	28OCT08 11:00	30OCT08 22:59	238	■BAY 17 CSP ACTIVITY																													
R209546705	K	4	13	OMW1		PC	BAY 17 REMOVE SHIELD BAGS FROM TUNNEL	8	28OCT08 11:00	28OCT08 18:59	238	■BAY 17 REMOVE SHIELD BAGS FROM TUNNEL																													
R209546706	K	4	13	NDE4		PC	BAY 17 NDE PERFORM VT INSPECTIONS OF AREA	5	28OCT08 19:00	28OCT08 23:59	259	■BAY 17 NDE PERFORM VT INSPECTIONS OF AREA																													
R209546707	K	4	13	OMW1		PC	BAY 17 COATING REPAIR(CONTINGENCY)	24	29OCT08 00:00	29OCT08 23:59	261	■BAY 17 COATING REPAIR(CONTINGENCY)																													

Activity ID	DISP	SPL	MILE	SUPV	P4	SWIN	Activity Description	Orig Dur	Early Start	Early Finish	Total Float	2008																															
												OCT							NOV																								
R209547103	P	4	P	OMW1		187	BAY 11 SET-UP, STAGE TOOLS, AND EQUIP	16	27OCT08 21:00*	28OCT08 12:59	296	17	18	19	20	21	22	23	24	25	26	27	28	29	30	31	1	2	3	4	5	6	7	8	9	10	11	12	13	14	15		
R209547102	K	4	13	OMW1		PC	BAY 11 FIREWATCH FOR PLUG REMOVED	92	28OCT08 01:00	31OCT08 20:59	216																																
R209547104	K	4	13	OMW1		PC	BAY 11 CSP ACTIVITY	60	28OCT08 01:00	30OCT08 12:59	248																																
R209547105	K	4	13	OMW1		PC	BAY 11 REMOVE SHIELD BAGS FROM TUNNEL	8	28OCT08 01:00	28OCT08 08:59	248																																
R209547106	K	4	13	NDE4		PC	BAY 11 NDE PERFORM VT INSPECTIONS OF AREA	5	28OCT08 09:00	28OCT08 13:59	255																																
R209547107	K	4	13	OMW1		PC	BAY 11 COATING REPAIR(CONTINGENCY)	24	28OCT08 14:00	29OCT08 13:59	271																																
R209547111	K	4	13	NDE4		PC	187 (CM-1) PERFORM UT IN BAY #11	20	28OCT08 14:00	29OCT08 09:59	255																																
R209547108	K	4	13	OMW1		PC	BAY 11 REINSTALL SHIELD BAGS	12	29OCT08 10:00	29OCT08 21:59	255																																
R209547110	K	4	13	OMW1		PC	BAY 11 REINSTALL FLOOR PLUG	8	29OCT08 22:00	30OCT08 05:59	255																																
R209547109	K	4	14	OMW1		PC	BAY 11 DEMOB & RESTOW TOOLS AND EQUIP	8	30OCT08 06:00	30OCT08 13:59	264																																
2095647																																											
R209564731	P	4	P	OMM3		187	TORUS DOP TEST HEPA UNIT	8	26JUN08 08:00	26JUN08 15:59	768																																
R209564729	P	6	P	OMVS		187	TORUS MOBE & SET UP GANTRY	8	04SEP08 08:00*	04SEP08 15:59	368																																
R209564723	P	6	P	OMVS		187	RAMP UP FABRICATE FLANGE PROTEC. COVERS	12	06OCT08 08:00*	07OCT08 11:59	188																																
R209564703	P	6	P	OMVS		187	NORTH TORUS PLUG C8-1258 ERECT HANDRAIL	4	13OCT08 08:00*	13OCT08 11:59	460																																
R209564704	P	6	P	OMVS		187	SOUTH TORUS PLUG C8-1259 ERECT HANDRAIL	6	13OCT08 08:00*	13OCT08 13:59	458																																
R209564701	T	4	13	OMVC	310	PC	TORUS REMOVE NORTH FLOOR PLUGS	4	27OCT08 17:00	27OCT08 20:59	274																																
R209564717	T	4	14	OMVC	330	PC	TORUS PROVIDE FIRE WATCH	186*	27OCT08 17:00	04NOV08 10:59	147																																
R209564705	T	4	13	OMVM	31N	PC	TORUS REMOVE NORTH TORUS MANWAY COVER	4	27OCT08 19:00	27OCT08 22:59	304																																
R209564720	T	4	13	OMVM	330	PC	TORUS PERMIT ACTIVITY	32*	27OCT08 19:00	29OCT08 02:59	274																																
R209564702	T	4	13	OMVC	310	PC	TORUS REMOVE SOUTH PLUGS	4	27OCT08 21:00	28OCT08 00:59	296																																
R209564707	T	4	13	OMVS	310	PC	TORUS PROPER C8-1260 ERECT HANDRAIL	6	27OCT08 21:00	28OCT08 02:59	306																																
R209564725	T	4	13	OMW1	310	PC	TORUS INSTALL TEMPORARY POWER	4	27OCT08 21:00	28OCT08 00:59	274																																
R209564708	T	4	13	OMVS	310	PC	TORUS PROPER C8-1261 ERECT HANDRAIL	4	28OCT08 01:00	28OCT08 04:59	296																																
R209564709	T	4	13	ROV1	330	PC	TORUS INSPECT, BELOW WATER LINE CAMERA INSPEC.	8	28OCT08 01:00	28OCT08 08:59	282																																
R209564722	T	4	13	NDE4	320	PC	TORUS COATING INSPECTION	8	28OCT08 01:00	28OCT08 08:59	274																																
R209564727	T	4	13	OMW1	3X1	PC	TORUS REMOVE TEMP POWER EQUIP	8	28OCT08 01:00	28OCT08 08:59	282																																
R209564706	T	4	13	OMVM	31S	PC	TORUS REMOVE SOUTH TORUS MANWAY COVER	4	28OCT08 07:00	28OCT08 10:59	296																																
R209564714	P	6	P	OMVS		187	SOUTH TORUS PLUG REMOVE HANDRAIL C8-1259	3	28OCT08 08:00	28OCT08 10:59	373																																

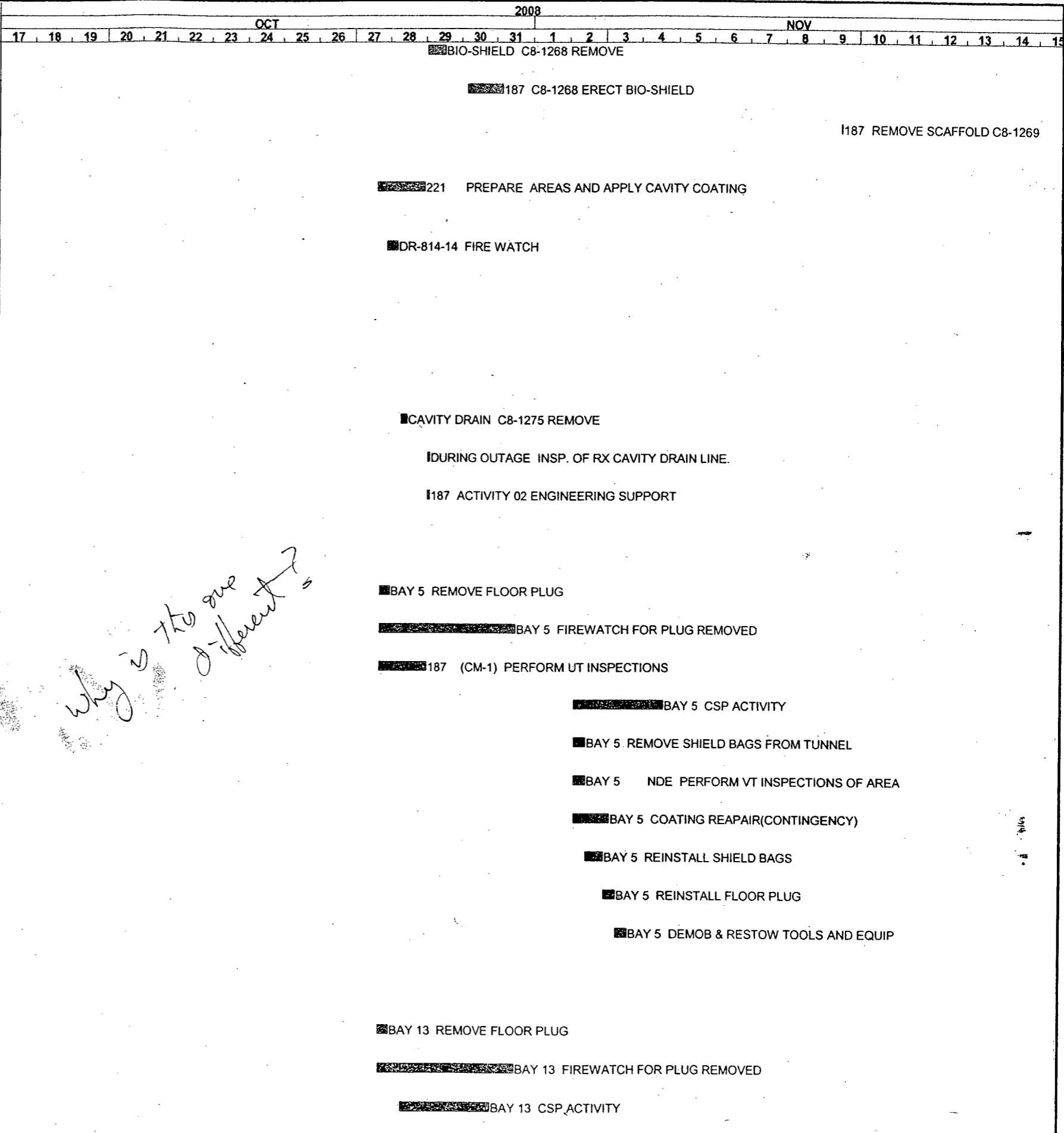


Activity ID	DISP	SPL	MILE	SUPV	P4	SWIN	Activity Description	Orig Dur	Early Start	Early Finish	Total Float	2008																													
												OCT							NOV																						
												17	18	19	20	21	22	23	24	25	26	27	28	29	30	31	1	2	3	4	5	6	7	8	9	10	11	12	13	14	15
R209564726	T	4	13	OMW3	320	PC	TORUS COATING REPAIR	8	28OCT08 09:00	28OCT08 16:59	274	■ TORUS COATING REPAIR																													
R209564728	T	4	13	OMM3		PC	TORUS VENT HEADER INTERNAL INSPECTION	35	28OCT08 09:00	29OCT08 19:59	263	■ TORUS VENT HEADER INTERNAL INSPECTION																													
R209564710	T	4	13	OMVM	3X1	PC	TORUS CLOSE OUT INSPECTION	4	28OCT08 17:00	28OCT08 20:59	274	■ TORUS CLOSE OUT INSPECTION																													
R209564721	T	4	13	SSV5	3X1	PC	TORUS TORUS CLOSE-OUT INSPECTION	2	28OCT08 19:00	28OCT08 20:59	274	■ TORUS TORUS CLOSE-OUT INSPECTION																													
R209564712	T	4	13	OMVM	3X1	PC	TORUS INSTALL S. MANWAY COVER	6	28OCT08 21:00	29OCT08 02:59	274	■ TORUS INSTALL S. MANWAY COVER																													
R209564711	T	4	13	OMVM	3X1	PC	TORUS INSTALL N. MANWAY COVER	6	29OCT08 03:00	29OCT08 08:59	274	■ TORUS INSTALL N. MANWAY COVER																													
R209564713	P	6	P	OMVS		187	NORTH TORUS PLUG C8-1258 REMOVE HANDRAIL	4	29OCT08 09:00	29OCT08 12:59	363	■ NORTH TORUS PLUG C8-1258 REMOVE HANDRAIL																													
R209564718	T	4	14	OMVS	3X1	PC	TORUS HATCH C8-1260 REMOVE HANDRAIL	3	29OCT08 09:00	29OCT08 11:59	282	■ TORUS HATCH C8-1260 REMOVE HANDRAIL																													
R209564724	T	4	14	OMI1	3X1	PC	TORUS MANWAYS LLRT DOUBLE SEAL 665.5.006	1	29OCT08 09:00	29OCT08 09:59	284	■ TORUS MANWAYS LLRT DOUBLE SEAL 665.5.006																													
R209564715	T	4	14	OMVC	3X1	PC	TORUS INSTALL NORTH FLOOR PLUG	4	29OCT08 12:00	29OCT08 15:59	282	■ TORUS INSTALL NORTH FLOOR PLUG																													
R209564719	T	4	14	OMVS	3X1	PC	TORUS HATCH C8-1261 REMOVE HANDRAIL	4	04NOV08 03:00*	04NOV08 06:59	147	■ TORUS HATCH C8-1261 REMOVE HANDRAIL																													
R209564716	T	4	14	OMVS	3X1	PC	TORUS INSTALL SOUTH FLOOR PLUG	4	04NOV08 07:00*	04NOV08 10:59	147	■ TORUS INSTALL SOUTH FLOOR PLUG																													
R209564735	K	4	16	OMVC		PC	TORUS DEMOBE & STORE GANTRY	8	04NOV08 11:00	04NOV08 18:59	261	■ TORUS DEMOBE & STORE GANTRY																													
2095750																																									
R209575001	T	4	12	OMM3		RR	RECIRC PUMP MONO RAIL HOIST - REFUEL OUTAGE	8	28OCT08 07:00	28OCT08 14:59	279	■ RECIRC PUMP MONO RAIL HOIST - REFUEL OUTAGE																													
R209575002	T	4	12	NDE4		RR	M-262-1 NDE MT HOIST HOOK	2	28OCT08 15:00	28OCT08 16:59	279	■ M-262-1 NDE MT HOIST HOOK																													
2096031																																									
R209603101	K	4	13	NDE4	EL	IS	ISI-187 S/BD NDE UT DW SHELL IN SANDBED REGION	24	28OCT08 09:00	29OCT08 08:59	293	■ ISI-187 S/BD NDE UT DW SHELL IN SANDBED REGION																													
2096037																																									
R209603702	K	4	13	OMVS	DS	PC	187 C8-1262 ERECT UT EXAM	10	28OCT08 12:00	28OCT08 21:59	263	■ 187 C8-1262 ERECT UT EXAM																													
R209603701	K	4	13	NDE4		PC	187 NDE UT OF UPPER DRYWELL	24	28OCT08 22:00	29OCT08 21:59	263	■ 187 NDE UT OF UPPER DRYWELL																													
R209603703	K	4	16	OMVS	EL	PC	UT INSPECT C8-1262 REMOVE SCAFFOLD	5	06NOV08 22:00*	07NOV08 02:59	205	■ UT INSPECT. C8-1262 REMOVE SCAFFOLD																													
2096676																																									
R209667601	T	5	14	OEDM		TB	INSPECT TURBINE PEDESTAL	48	25OCT08 22:00	27OCT08 21:59	330	■ INSPECT TURBINE PEDESTAL																													
2096677																																									
R209667701	T	4	12	OEDM		MI	DW SHIELD WALLS STRUCTURAL INSPECTION	4	31OCT08 11:00	31OCT08 14:59	221	■ DW SHIELD WALLS STRUCTURAL INSPECTION																													
2096678																																									
R209667801	T	5	14	OEDM		MI	HEATER BAY STRUCTURAL INSPECTION	24	25OCT08 03:00	26OCT08 02:59	371	■ HEATER BAY STRUCTURAL INSPECTION																													
2097321																																									
R209732101	T	4	13	OEDM		PC	DRY WELL STRUCTURAL INSPECTION	32	27OCT08 17:00	29OCT08 00:59	155	■ DRY WELL STRUCTURAL INSPECTION																													
R209732102	T	4	13	OEDM		PC	TORUS STRUCTURAL INSPECTION	12	27OCT08 17:00	28OCT08 04:59	175	■ TORUS STRUCTURAL INSPECTION																													
R209732106	K	4	13	OMVS		PC	BIO-SHIELD C8-1269 ERECT SCAFFOLD	8	28OCT08 20:00*	29OCT08 03:59	160	■ BIO-SHIELD C8-1269 ERECT SCAFFOLD																													

												2008																													
												OCT							NOV																						
												17	18	19	20	21	22	23	24	25	26	27	28	29	30	31	1	2	3	4	5	6	7	8	9	10	11	12	13	14	15
												■ TORUS COATING REPAIR																													
												■ TORUS VENT HEADER INTERNAL INSPECTION																													
												■ TORUS CLOSE OUT INSPECTION																													
												■ TORUS TORUS CLOSE-OUT INSPECTION																													
												■ TORUS INSTALL S. MANWAY COVER																													
												■ TORUS INSTALL N. MANWAY COVER																													
												■ NORTH TORUS PLUG C8-1258 REMOVE HANDRAIL																													
												■ TORUS HATCH C8-1260 REMOVE HANDRAIL																													
												■ TORUS MANWAYS LLRT DOUBLE SEAL 665.5.006																													
												■ TORUS INSTALL NORTH FLOOR PLUG																													
												■ TORUS HATCH C8-1261 REMOVE HANDRAIL																													
												■ TORUS INSTALL SOUTH FLOOR PLUG																													
												■ TORUS DEMOBE & STORE GANTRY																													
												■ RECIRC PUMP MONO RAIL HOIST - REFUEL OUTAGE																													
												■ M-262-1 NDE MT HOIST HOOK																													
												■ ISI-187 S/BD NDE UT DW SHELL IN SANDBED REGION																													
												■ 187 C8-1262 ERECT UT EXAM																													
												■ 187 NDE UT OF UPPER DRYWELL																													
												■ UT INSPECT. C8-1262 REMOVE SCAFFOLD																													
												■ INSPECT TURBINE PEDESTAL																													
												■ DW SHIELD WALLS STRUCTURAL INSPECTION																													
												■ HEATER BAY STRUCTURAL INSPECTION																													
												■ DRY WELL STRUCTURAL INSPECTION																													
												■ TORUS STRUCTURAL INSPECTION																													
												■ BIO-SHIELD C8-1269 ERECT SCAFFOLD																													

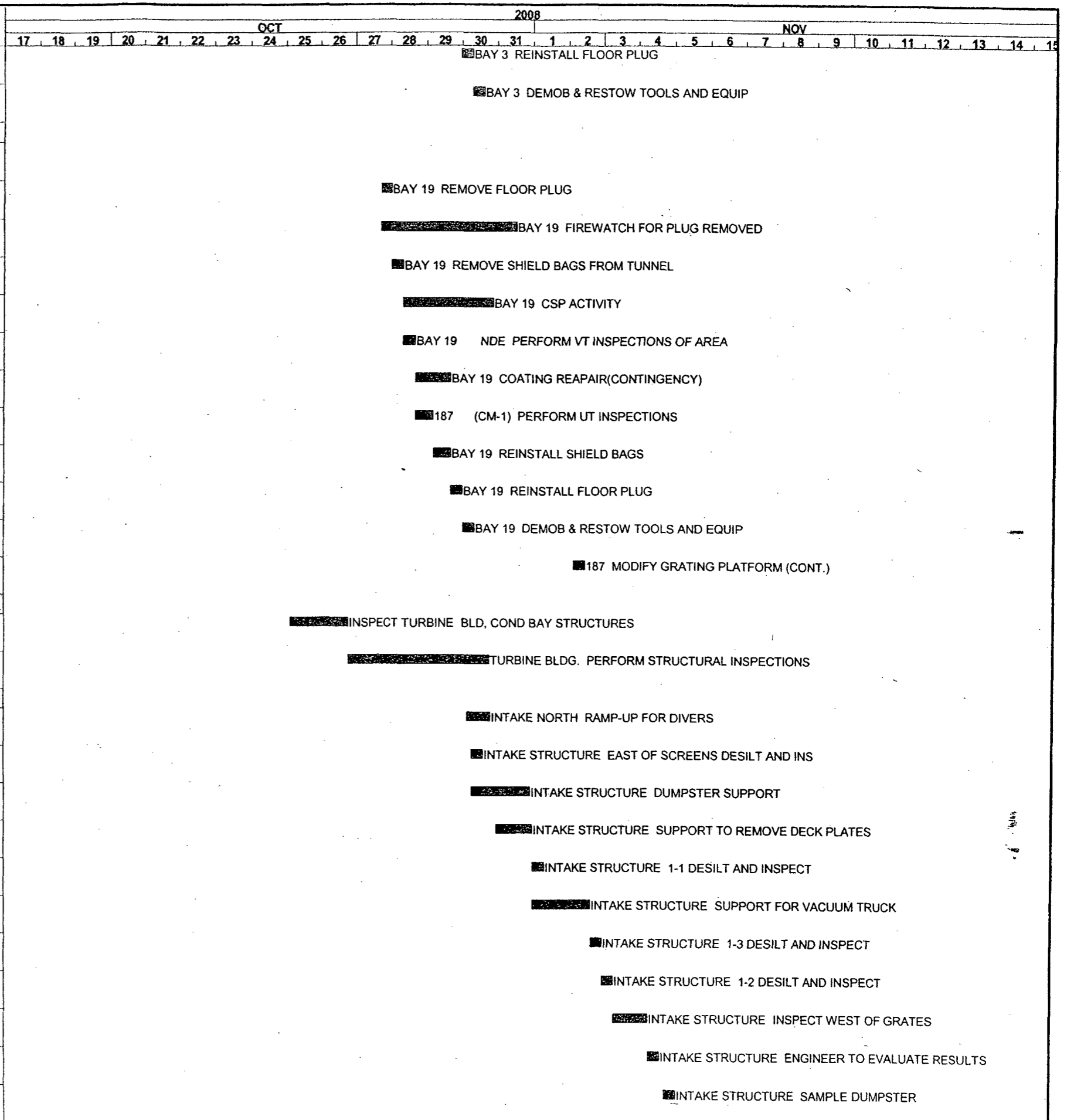
Activity ID	DISP	SPL	MILE	SUPV	P4	SWIN	Activity Description	Orig Dur	Early Start	Early Finish	Total Float	2008																													
												OCT							NOV																						
												17	18	19	20	21	22	23	24	25	26	27	28	29	30	31	1	2	3	4	5	6	7	8	9	10	11	12	13	14	15
R209732105	K	4	13	OMVS		PC	BIO-SHIELD C8-1268 REMOVE	12	29OCT08 01:00	29OCT08 12:59	155	■ BIO-SHIELD C8-1268 REMOVE																													
R209732104	K	4	13	OMVS		PC	187 C8-1268 ERECT BIO-SHIELD	24	30OCT08 04:00	31OCT08 03:59	136	■ 187 C8-1268 ERECT BIO-SHIELD																													
R209732107	K	4	16	OMVS		PC	187 REMOVE SCAFFOLD C8-1269	1	09NOV08 12:00	09NOV08 12:59	147	187 REMOVE SCAFFOLD C8-1269																													
2098883																																									
R209868306	K	2	16	OMW3		DV	221 PREPARE AREAS AND APPLY CAVITY COATING	32	27OCT08 15:00	28OCT08 22:59	424	■ 221 PREPARE AREAS AND APPLY CAVITY COATING																													
2100729																																									
R210072902	T	1	14	SSV5		MI	DR-814-14 FIRE WATCH	8	27OCT08 22:00	28OCT08 05:59	320	■ DR-814-14 FIRE WATCH																													
2102695																																									
R210269505	K	2	XX	OEPP		RV	187 ENGINEERING SUPPORT ACTIVITY	8	26JUN08 10:00	26JUN08 17:59	4,516																														
R210269503	P	6	P	OMVS		187	CAVITY DRAIN C8-1275 ERECT SCAFFOLD	1	22SEP08 08:00*	22SEP08 08:59	279																														
R210269501	P	6	P	OMM3		187	PRE-OUTAGE INSP. OF RX CAVITY DRAIN LINE.	4	06OCT08 09:00*	06OCT08 12:59	195																														
R210269504	P	6	P	OMVS		187	CAVITY DRAIN C8-1275 REMOVE	4	28OCT08 08:00	28OCT08 11:59	372	■ CAVITY DRAIN C8-1275 REMOVE																													
R210269502	T	2	12	OMM3		RV	DURING OUTAGE INSP. OF RX CAVITY DRAIN LINE.	1	29OCT08 02:00	29OCT08 02:59	245	■ DURING OUTAGE INSP. OF RX CAVITY DRAIN LINE.																													
R210269506	T	2	12	OEPP		RV	187 ACTIVITY 02 ENGINEERING SUPPORT	1	29OCT08 02:00	29OCT08 02:59	282	■ 187 ACTIVITY 02 ENGINEERING SUPPORT																													
2105179																																									
R210517903	P	4	P	OMW1		PC	BAY 5 SET-UP, STAGE TOOLS, AND EQUIP	16	26JUN08 08:00	27JUN08 15:59	760																														
R210517901	K	4	13	OMW1		PC	BAY 5 REMOVE FLOOR PLUG	8	27OCT08 17:00	28OCT08 00:59	224	■ BAY 5 REMOVE FLOOR PLUG																													
R210517902	K	4	13	OMW1		PC	BAY 5 FIREWATCH FOR PLUG REMOVED	92	27OCT08 17:00	31OCT08 12:59	224	■ BAY 5 FIREWATCH FOR PLUG REMOVED																													
R210517912	K	4	13	NDE4		PC	187 (CM-1) PERFORM UT INSPECTIONS	33	27OCT08 17:00	29OCT08 01:59	283	■ 187 (CM-1) PERFORM UT INSPECTIONS																													
R210517904	K	4	13	OMW1		PC	BAY 5 CSP ACTIVITY	60	02NOV08 04:00	04NOV08 15:59	125	■ BAY 5 CSP ACTIVITY																													
R210517905	K	4	13	OMW1		PC	BAY 5 REMOVE SHIELD BAGS FROM TUNNEL	8	02NOV08 04:00	02NOV08 11:59	125	■ BAY 5 REMOVE SHIELD BAGS FROM TUNNEL																													
R210517906	K	4	13	NDE4		PC	BAY 5 NDE PERFORM VT INSPECTIONS OF AREA	8	02NOV08 04:00	02NOV08 11:59	157	■ BAY 5 NDE PERFORM VT INSPECTIONS OF AREA																													
R210517907	K	4	16	OMW1		PC	BAY 5 COATING REPAIR(CONTINGENCY)	24	02NOV08 04:00	03NOV08 03:59	300	■ BAY 5 COATING REPAIR(CONTINGENCY)																													
R210517908	K	4	13	OMW1		PC	BAY 5 REINSTALL SHIELD BAGS	12	02NOV08 12:00	02NOV08 23:59	157	■ BAY 5 REINSTALL SHIELD BAGS																													
R210517910	K	4	13	OMW1		PC	BAY 5 REINSTALL FLOOR PLUG	8	03NOV08 00:00	03NOV08 07:59	157	■ BAY 5 REINSTALL FLOOR PLUG																													
R210517909	K	4	16	OMW1		PC	BAY 5 DEMOB & RESTOW TOOLS AND EQUIP	8	03NOV08 08:00	03NOV08 15:59	288	■ BAY 5 DEMOB & RESTOW TOOLS AND EQUIP																													
2105477																																									
R210547703	P	4	P	OMW1		PC	BAY 13 SET-UP, STAGE TOOLS, AND EQUIP	16	26JUN08 08:00	27JUN08 15:59	760																														
R210547701	K	4	13	OMW1		PC	BAY 13 REMOVE FLOOR PLUG	8	27OCT08 17:00	28OCT08 00:59	224	■ BAY 13 REMOVE FLOOR PLUG																													
R210547702	K	4	13	OMW1		PC	BAY 13 FIREWATCH FOR PLUG REMOVED	92	27OCT08 17:00	31OCT08 12:59	224	■ BAY 13 FIREWATCH FOR PLUG REMOVED																													
R210547704	K	4	13	OMW1		PC	BAY 13 CSP ACTIVITY	60	28OCT08 09:00	30OCT08 20:59	240	■ BAY 13 CSP ACTIVITY																													

Why is this one different?



Activity ID	DISP	SPL	MILE	SUPV	P4	SWIN	Activity Description	Orig Dur	Early Start	Early Finish	Total Float	2008																													
												OCT							NOV																						
												17	18	19	20	21	22	23	24	25	26	27	28	29	30	31	1	2	3	4	5	6	7	8	9	10	11	12	13	14	15
R210547705	K	4	13	OMW1		PC	BAY 13 REMOVE SHIELD BAGS FROM TUNNEL	8	28OCT08 09:00	28OCT08 16:59	240	■ BAY 13 REMOVE SHIELD BAGS FROM TUNNEL																													
R210547706	K	4	13	NDE4		PC	BAY 13 NDE PERFORM VT INSPECTIONS OF AREA	8	28OCT08 17:00	29OCT08 00:59	248	■ BAY 13 NDE PERFORM VT INSPECTIONS OF AREA																													
R210547712	K	4	13	NDE4		PC	187 (CM-1) PERFORM UT ON THE SHELL	12	29OCT08 01:00	29OCT08 12:59	248	■ 187 (CM-1) PERFORM UT ON THE SHELL																													
R210547707	K	4	13	OMW1		PC	BAY 13 COATING REPAIR(CONTINGENCY)	24	29OCT08 13:00	30OCT08 12:59	248	■ BAY 13 COATING REPAIR(CONTINGENCY)																													
R210547708	K	4	13	OMW1		PC	BAY 13 REINSTALL SHIELD BAGS	12	29OCT08 13:00	30OCT08 00:59	252	■ BAY 13 REINSTALL SHIELD BAGS																													
R210547710	K	4	13	OMW1		PC	BAY 13 REINSTALL FLOOR PLUG	8	30OCT08 01:00	30OCT08 08:59	252	■ BAY 13 REINSTALL FLOOR PLUG																													
R210547709	K	4	14	OMW1		PC	BAY 13 DEMOB & RESTOW TOOLS AND EQUIP	8	30OCT08 09:00	30OCT08 16:59	261	■ BAY 13 DEMOB & RESTOW TOOLS AND EQUIP																													
2105479																																									
R210547903	P	4	P	OMW1		PC	BAY 15 SET-UP, STAGE TOOLS, AND EQUIP	16	26JUN08 08:00	27JUN08 15:59	760																														
R210547901	K	4	13	OMW1		PC	BAY 15 REMOVE FLOOR PLUG	8	27OCT08 17:00	28OCT08 00:59	224	■ BAY 15 REMOVE FLOOR PLUG																													
R210547902	K	4	13	OMW1		PC	BAY 15 FIREWATCH FOR PLUG REMOVED	92	27OCT08 17:00	31OCT08 12:59	224	■ BAY 15 FIREWATCH FOR PLUG REMOVED																													
R210547904	K	4	13	OMW1		PC	BAY 15 CSP ACTIVITY	60	28OCT08 17:00	31OCT08 04:59	232	■ BAY 15 CSP ACTIVITY																													
R210547905	K	4	13	OMW1		PC	BAY 15 REMOVE SHIELD BAGS FROM TUNNEL	8	28OCT08 17:00	29OCT08 00:59	232	■ BAY 15 REMOVE SHIELD BAGS FROM TUNNEL																													
R210547906	K	4	13	NDE4		PC	BAY 15 NDE PERFORM VT INSPECTIONS OF AREA	8	29OCT08 01:00	29OCT08 08:59	237	■ BAY 15 NDE PERFORM VT INSPECTIONS OF AREA																													
R210547907	K	4	13	OMW1		PC	BAY 15 COATING REPAIR(CONTINGENCY)	24	29OCT08 09:00	30OCT08 08:59	252	■ BAY 15 COATING REPAIR(CONTINGENCY)																													
R210547912	K	4	13	NDE4		PC	187 (CM-1) PERFORM UT INSPECTIONS	19	29OCT08 09:00	30OCT08 03:59	237	■ 187 (CM-1) PERFORM UT INSPECTIONS																													
R210547908	K	4	13	OMW1		PC	BAY 15 REINSTALL SHIELD BAGS	12	30OCT08 04:00	30OCT08 15:59	237	■ BAY 15 REINSTALL SHIELD BAGS																													
R210547910	K	4	13	OMW1		PC	BAY 15 REINSTALL FLOOR PLUG	8	30OCT08 16:00	30OCT08 23:59	237	■ BAY 15 REINSTALL FLOOR PLUG																													
R210547909	K	4	16	OMW1		PC	BAY 15 DEMOB & RESTOW TOOLS AND EQUIP	8	31OCT08 00:00	31OCT08 07:59	368	■ BAY 15 DEMOB & RESTOW TOOLS AND EQUIP																													
2105515																																									
R210551503	P	4	P	OMW1		PC	BAY 3 SET-UP, STAGE TOOLS, AND EQUIP	16	26JUN08 08:00	27JUN08 15:59	760																														
R210551501	K	4	13	OMW1		PC	BAY 3 REMOVE FLOOR PLUG	8	27OCT08 17:00	28OCT08 00:59	224	■ BAY 3 REMOVE FLOOR PLUG																													
R210551502	K	4	13	OMW1		PC	BAY 3 FIREWATCH FOR PLUG REMOVED	92	27OCT08 17:00	31OCT08 12:59	224	■ BAY 3 FIREWATCH FOR PLUG REMOVED																													
R210551504	K	4	13	OMW1		PC	BAY 3 CSP ACTIVITY	60	28OCT08 01:00	30OCT08 12:59	248	■ BAY 3 CSP ACTIVITY																													
R210551505	K	4	13	OMW1		PC	BAY 3 REMOVE SHIELD BAGS FROM TUNNEL	8	28OCT08 01:00	28OCT08 08:59	248	■ BAY 3 REMOVE SHIELD BAGS FROM TUNNEL																													
R210551506	K	4	13	NDE4		PC	BAY 3 NDE PERFORM VT INSPECTIONS OF AREA	5	28OCT08 09:00	28OCT08 13:59	250	■ BAY 3 NDE PERFORM VT INSPECTIONS OF AREA																													
R210551511	K	4	13	NDE4		PC	187 (CM-1) PERFORM UT IN BAY #3	21	28OCT08 14:00	29OCT08 10:59	250	■ 187 (CM-1) PERFORM UT IN BAY #3																													
R210551507	K	4	13	OMW1		PC	BAY 3 COATING REPAIR(CONTINGENCY)	24	29OCT08 11:00	30OCT08 10:59	250	■ BAY 3 COATING REPAIR(CONTINGENCY)																													
R210551508	K	4	13	OMW1		PC	BAY 3 REINSTALL SHIELD BAGS	12	29OCT08 11:00	29OCT08 22:59	254	■ BAY 3 REINSTALL SHIELD BAGS																													

Activity ID	DISP	SPL	MILE	SUPV	P4	SWIN	Activity Description	Orig Dur	Early Start	Early Finish	Total Float
R210551510	K	4	13	OMW1		PC	BAY 3 REINSTALL FLOOR PLUG	8	29OCT08 23:00	30OCT08 06:59	254
R210551509	K	4	16	OMW1		PC	BAY 3 DEMOB & RESTOW TOOLS AND EQUIP	8	30OCT08 07:00	30OCT08 14:59	385
2105516											
R210551603	P	4	P	OMW1		PC	BAY 19 SET-UP, STAGE TOOLS, AND EQUIP	16	26JUN08 08:00	27JUN08 15:59	760
R210551601	K	4	13	OMW1		PC	BAY 19 REMOVE FLOOR PLUG	8	27OCT08 17:00	28OCT08 00:59	224
R210551602	K	4	13	OMW1		PC	BAY 19 FIREWATCH FOR PLUG REMOVED	92	27OCT08 17:00	31OCT08 12:59	224
R210551605	K	4	13	OMW1		PC	BAY 19 REMOVE SHIELD BAGS FROM TUNNEL	8	28OCT08 01:00	28OCT08 08:59	240
R210551604	K	4	13	OMW1		PC	BAY 19 CSP ACTIVITY	60	28OCT08 09:00	30OCT08 20:59	240
R210551606	K	4	13	NDE4		PC	BAY 19 NDE PERFORM VT INSPECTIONS OF AREA	8	28OCT08 09:00	28OCT08 16:59	260
R210551607	K	4	13	OMW1		PC	BAY 19 COATING REPAIR(CONTINGENCY)	24	28OCT08 17:00	29OCT08 16:59	268
R210551612	K	4	13	NDE4		PC	187 (CM-1) PERFORM UT INSPECTIONS	12	28OCT08 17:00	29OCT08 04:59	260
R210551608	K	4	13	OMW1		PC	BAY 19 REINSTALL SHIELD BAGS	12	29OCT08 05:00	29OCT08 16:59	260
R210551610	K	4	13	OMW1		PC	BAY 19 REINSTALL FLOOR PLUG	8	29OCT08 17:00	30OCT08 00:59	260
R210551609	K	4	16	OMW1		PC	BAY 19 DEMOB & RESTOW TOOLS AND EQUIP	8	30OCT08 01:00	30OCT08 08:59	391
R210551611	K	4	13	OMVS		PC	187 MODIFY GRATING PLATFORM (CONT.)	8	02NOV08 04:00*	02NOV08 11:59	177
2105583											
R210556301	T	5	14	OEDM		MI	INSPECT TURBINE BLD, COND BAY STRUCTURES	40	25OCT08 03:00	26OCT08 18:59	259
R210556302	T	5	14	OEDM		MI	TURBINE BLDG. PERFORM STRUCTURAL INSPECTIONS	96	26OCT08 19:00	30OCT08 18:59	259
2113811											
R211381101	K	6	10	OMVM		CW	INTAKE NORTH RAMP-UP FOR DIVERS	16	30OCT08 04:00	30OCT08 19:59	90
R211381107	K	6	10	OMVM		CW	INTAKE STRUCTURE EAST OF SCREENS DESILT AND INS	8	30OCT08 07:00	30OCT08 14:59	50
R211381108	K	6	10	OMVM		CW	INTAKE STRUCTURE DUMPSTER SUPPORT	40	30OCT08 07:00	31OCT08 22:59	50
R211381102	K	6	10	OMVM		CW	INTAKE STRUCTURE SUPPORT TO REMOVE DECK PLATES	24	31OCT08 00:00	31OCT08 23:59	90
R211381106	K	6	10	OMVM		CW	INTAKE STRUCTURE 1-1 DESILT AND INSPECT	8	01NOV08 00:00	01NOV08 07:59	90
R211381109	K	6	10	OMVM		CW	INTAKE STRUCTURE SUPPORT FOR VACUUM TRUCK	40	01NOV08 00:00	02NOV08 15:59	90
R211381104	K	6	10	OMVM		CW	INTAKE STRUCTURE 1-3 DESILT AND INSPECT	8	02NOV08 16:00	02NOV08 23:59	90
R211381105	K	6	10	OMVM		CW	INTAKE STRUCTURE 1-2 DESILT AND INSPECT	8	03NOV08 00:00	03NOV08 07:59	90
R211381103	K	6	10	OMVM		CW	INTAKE STRUCTURE INSPECT WEST OF GRATES	24	03NOV08 08:00	04NOV08 07:59	90
R211381110	K	6	14	OEPB		CW	INTAKE STRUCTURE ENGINEER TO EVALUATE RESULTS	8	04NOV08 08:00	04NOV08 15:59	127
R211381112	K	6	14	OPCE		CW	INTAKE STRUCTURE SAMPLE DUMPSTER	8	04NOV08 19:00	05NOV08 02:59	127



Activity ID	DISP	SPL	MILE	SUPV	P4	SWIN	Activity Description	Orig Dur	Early Start	Early Finish	Total Float	2008																													
												OCT							NOV																						
												17	18	19	20	21	22	23	24	25	26	27	28	29	30	31	1	2	3	4	5	6	7	8	9	10	11	12	13	14	15
2114300																																									
R211430002	K	4	13	OINS		FW	V-2-73,-74 #354 REMV INSL - V-2-73,-74	5	28OCT08 09:00	28OCT08 13:59	222	■V-2-73,-74 #354 REMV INSL - V-2-73,-74																													
R211430001	K	4	13	OMM3		PC	INSPECT WATER LINE IN DRYWELL	24	28OCT08 14:00	29OCT08 13:59	266	■INSPECT WATER LINE IN DRYWELL																													
R211430003	K	4	13	OINS		FW	V-2-73,-74 #354 INST INSL - V-2-73,-74	5	29OCT08 14:00	29OCT08 18:59	222	■V-2-73,-74 #354 INST INSL - V-2-73,-74																													
2117387																																									
R211738702	K	4	13	OMM3		PC	187 BAY #5 REMOVE SEALANT IN TRENCH	8	28OCT08 09:00	28OCT08 16:59	272	■187 BAY #5 REMOVE SEALANT IN TRENCH																													
R211738703	K	4	13	OMM3		PC	187 BAY #17 REMOVE SEALANT IN TRENCH	8	28OCT08 09:00	28OCT08 16:59	272	■187 BAY #17 REMOVE SEALANT IN TRENCH																													
R211738706	K	4	13	OMM3		PC	187 PREP TRENCHES FOR UT INSP.(CONTINGENCY)	8	28OCT08 17:00	29OCT08 00:59	272	■187 PREP TRENCHES FOR UT INSP (CONTINGENCY)																													
R211738701	K	4	13	NDE4		PC	187 BAY #5, #17 PERFORM VISUAL INSPECTION	8	29OCT08 01:00	29OCT08 08:59	272	■187 BAY #5, #17 PERFORM VISUAL INSPECTION																													
R211738704	K	4	13	OMWP		PC	187 BAY #5 INSTALL SEALANT IN TRENCH	4	29OCT08 09:00	29OCT08 12:59	272	■187 BAY #5 INSTALL SEALANT IN TRENCH																													
R211738705	K	4	13	OMWP		PC	187 BAY #17 INSTALL SEALANT IN TRENCH	4	29OCT08 09:00	29OCT08 12:59	272	■187 BAY #17 INSTALL SEALANT IN TRENCH																													
2121220																																									
R212122002	K	6	14	OVC1		CW	V-3-13 PERFORM FAC PREP OF PIPING	1	28OCT08 20:00*	28OCT08 20:59	279	IV-3-13 PERFORM FAC PREP OF PIPING																													
R212122001	K	6	14	NDE4		CW	V-3-13 NDE INSPECT UNCOATED CS PIPE IN CW	6	29OCT08 06:00	29OCT08 11:59	138	■V-3-13 NDE INSPECT UNCOATED CS PIPE IN CW																													
2121228																																									
R212122801	K	6	14	NDE4		CW	V-3-12 PERFORM UT INSPECTION OF PIPING	1	27OCT08 14:00	27OCT08 14:59	327	IV-3-12 PERFORM UT INSPECTION OF PIPING																													
R212122802	K	6	14	OVC1		CW	V-3-12 PERFORM FAC PREP OF PIPING	1	30OCT08 14:00*	30OCT08 14:59	255	IV-3-12 PERFORM FAC PREP OF PIPING																													
2121230																																									
R212123003	K	5	10	OINS		CC	V-3-58 #359 REMV INSL - V-3-58	5	25OCT08 13:00	25OCT08 17:59	152	■V-3-58 #359 REMV INSL - V-3-58																													
R212123002	K	5	10	OVC1		CC	V-3-58 PERFORM FAC PREP OF PIPING	4	25OCT08 18:00	25OCT08 21:59	184	■V-3-58 PERFORM FAC PREP OF PIPING																													
R212123001	K	5	10	NDE4		CC	V-3-58 INSPECT COATED CS PIP IN SW SYS	4	26OCT08 06:00	26OCT08 09:59	92	■V-3-58 INSPECT COATED CS PIP IN SW SYS																													
R212123004	K	5	14	OINS		CC	V-3-58 #359 INST INSL - V-3-58	6	26OCT08 10:00	26OCT08 15:59	297	■V-3-58 #359 INST INSL - V-3-58																													
2121407																																									
R212140701	K	6	14	OMM3		CW	FG-3-380 FLOW GLASS FG-3-380	1	31OCT08 12:00	31OCT08 12:59	229	IFG-3-380 FLOW GLASS FG-3-380																													
R212140703	K	6	14	OMM3		CW	FG-3-380 PMT	1	02NOV08 22:00	02NOV08 22:59	177	IFG-3-380 PMT																													
R212140702	K	6	14	OMM3		CW	FG-3-380 PERFORM VISUAL INTERNAL INSP	1	03NOV08 04:00	03NOV08 04:59	176	IFG-3-380 PERFORM VISUAL INTERNAL INSP																													
R212140704	K	6	14	NDE4		CW	FG-3-380 PERFORM VT-3 INSP	1	03NOV08 05:00	03NOV08 05:59	176	IFG-3-380 PERFORM VT-3 INSP																													
2121461																																									
R212146101	K	6	14	OMM3		CW	FI-333-5 REPLACE FI-333-5	1	29OCT08 05:00	29OCT08 05:59	114	IFI-333-5 REPLACE FI-333-5																													
R212146102	K	6	14	OMM3		CW	FI-333-5 PERFORM VISUAL INTERNAL INSP	1	02NOV08 22:00	02NOV08 22:59	182	IFI-333-5 PERFORM VISUAL INTERNAL INSP																													
R212146103	K	6	14	OMM3		CW	FI-333-5 PMT D	1	02NOV08 22:00	02NOV08 22:59	177	IFI-333-5 PMT D																													
R212146104	K	6	14	OMM3		CW	FI-333-5 PERFORM VT-3 INSP	1	02NOV08 23:00	02NOV08 23:59	182	IFI-333-5 PERFORM VT-3 INSP																													

												2008																													
												OCT							NOV																						
												17	18	19	20	21	22	23	24	25	26	27	28	29	30	31	1	2	3	4	5	6	7	8	9	10	11	12	13	14	15
												■V-2-73,-74 #354 REMV INSL - V-2-73,-74																													
												■INSPECT WATER LINE IN DRYWELL																													
												■V-2-73,-74 #354 INST INSL - V-2-73,-74																													
												■187 BAY #5 REMOVE SEALANT IN TRENCH																													
												■187 BAY #17 REMOVE SEALANT IN TRENCH																													
												■187 PREP TRENCHES FOR UT INSP (CONTINGENCY)																													
												■187 BAY #5, #17 PERFORM VISUAL INSPECTION																													
												■187 BAY #5 INSTALL SEALANT IN TRENCH																													
												■187 BAY #17 INSTALL SEALANT IN TRENCH																													
												IV-3-13 PERFORM FAC PREP OF PIPING																													
												■V-3-13 NDE INSPECT UNCOATED CS PIPE IN CW																													
												IV-3-12 PERFORM UT INSPECTION OF PIPING																													
												IV-3-12 PERFORM FAC PREP OF PIPING																													
												■V-3-58 #359 REMV INSL - V-3-58																													
												■V-3-58 PERFORM FAC PREP OF PIPING																													
												■V-3-58 INSPECT COATED CS PIP IN SW SYS																													
												■V-3-58 #359 INST INSL - V-3-58																													
												IFG-3-380 FLOW GLASS FG-3-380																													
												IFG-3-380 PMT																													
												IFG-3-380 PERFORM VISUAL INTERNAL INSP																													
												IFG-3-380 PERFORM VT-3 INSP																													
												IFI-333-5 REPLACE FI-333-5																													
												IFI-333-5 PERFORM VISUAL INTERNAL INSP																													
												IFI-333-5 PMT D																													
												IFI-333-5 PERFORM VT-3 INSP																													

Activity ID	DISP	SPL	MILE	SUPV	P4	SWIN	Activity Description	Orig Dur	Early Start	Early Finish	Total Float	2008																														
												OCT														NOV																
												17	18	19	20	21	22	23	24	25	26	27	28	29	30	31	1	2	3	4	5	6	7	8	9	10	11	12	13	14	15	
2121592																																										
R212159201	K	6	10	OMM3		CW	V-3-110 REPLACE VALVE	1	25OCT08 21:00	25OCT08 21:59	190	IV-3-110 REPLACE VALVE																														
R212159202	K	6	14	OEPP		CW	V-3-110 INSPECT VALVE INTERNALS	1	02NOV08 20:00	02NOV08 20:59	184	IV-3-110 INSPECT VALVE INTERNALS																														
R212159204	K	6	14	NDE4		CW	V-3-110 VT-3 INSPECTION	1	02NOV08 21:00	02NOV08 21:59	184	IV-3-110 VT-3 INSPECTION																														
2121963																																										
R212196301	K	6	14	OMM3		CW	V-3-13 INSPECT INTERALS	1	27OCT08 15:00	27OCT08 15:59	325	IV-3-13 INSPECT INTERALS																														
R212196302	K	6	14	NDE4		CW	V-3-13 VT-3 INSPECTION	1	27OCT08 16:00	27OCT08 16:59	325	IV-3-13 VT-3 INSPECTION																														
2122300																																										
R212230001	K	4	13	OEDM		PC	TORUS INSPECT TORUS	1	27OCT08 17:00	27OCT08 17:59	315	ITORUS INSPECT TORUS																														
2122551																																										
R212255101	K	6	14	OMM3		CW	S-3-24 REMOVE STRAINER FOR INSPECTION	1	31OCT08 14:00	31OCT08 14:59	231	IS-3-24 REMOVE STRAINER FOR INSPECTION																														
R212255102	K	6	14	OMM3		CW	S-3-24 INSPECT ONE COPPER ALLOY STRNR	1	02NOV08 22:00	02NOV08 22:59	183	IS-3-24 INSPECT ONE COPPER ALLOY STRNR																														
R212255103	K	6	14	OMM3		CW	S-3-24 PMT	1	02NOV08 22:00	02NOV08 22:59	177	IS-3-24 PMT																														
2122565																																										
R212256501	K	6	10	OMM3		CW	TE-26 INSP WATER SIDE OF 4 CIRC WTR THERMOWELLS	1	25OCT08 22:00	25OCT08 22:59	193	ITE-26 INSP WATER SIDE OF 4 CIRC WTR THERMOWELLS																														
R212256502	K	6	10	OMM3		CW	TE-26 SPECIAL PERMIT ACTIVITY	1	25OCT08 22:00	25OCT08 22:59	195	ITE-26 SPECIAL PERMIT ACTIVITY																														
2122575																																										
R212257501	K	6	10	OMM3		CW	V-3-1041 PERFORM INTERNAL INSPECTION (LRA)	1	29OCT08 07:00	29OCT08 07:59	108	IV-3-1041 PERFORM INTERNAL INSPECTION (LRA)																														
2122597																																										
R212259701	R	3		OMM2		MI	775 PERFORM CABLE INSP IN THE COND BAY LRA	4	26JUN08 09:00	26JUN08 12:59	4,521																															
R212259702	R	3		OMM2		MI	775 CABLE INSP IN TRUNION ROOM LRA	2	26JUN08 09:00	26JUN08 10:59	4,523																															
R212259703	R	3		OMM2		MI	775 CABLE INSP IN DRYWELL LRA	8	26JUN08 09:00	26JUN08 16:59	4,517																															