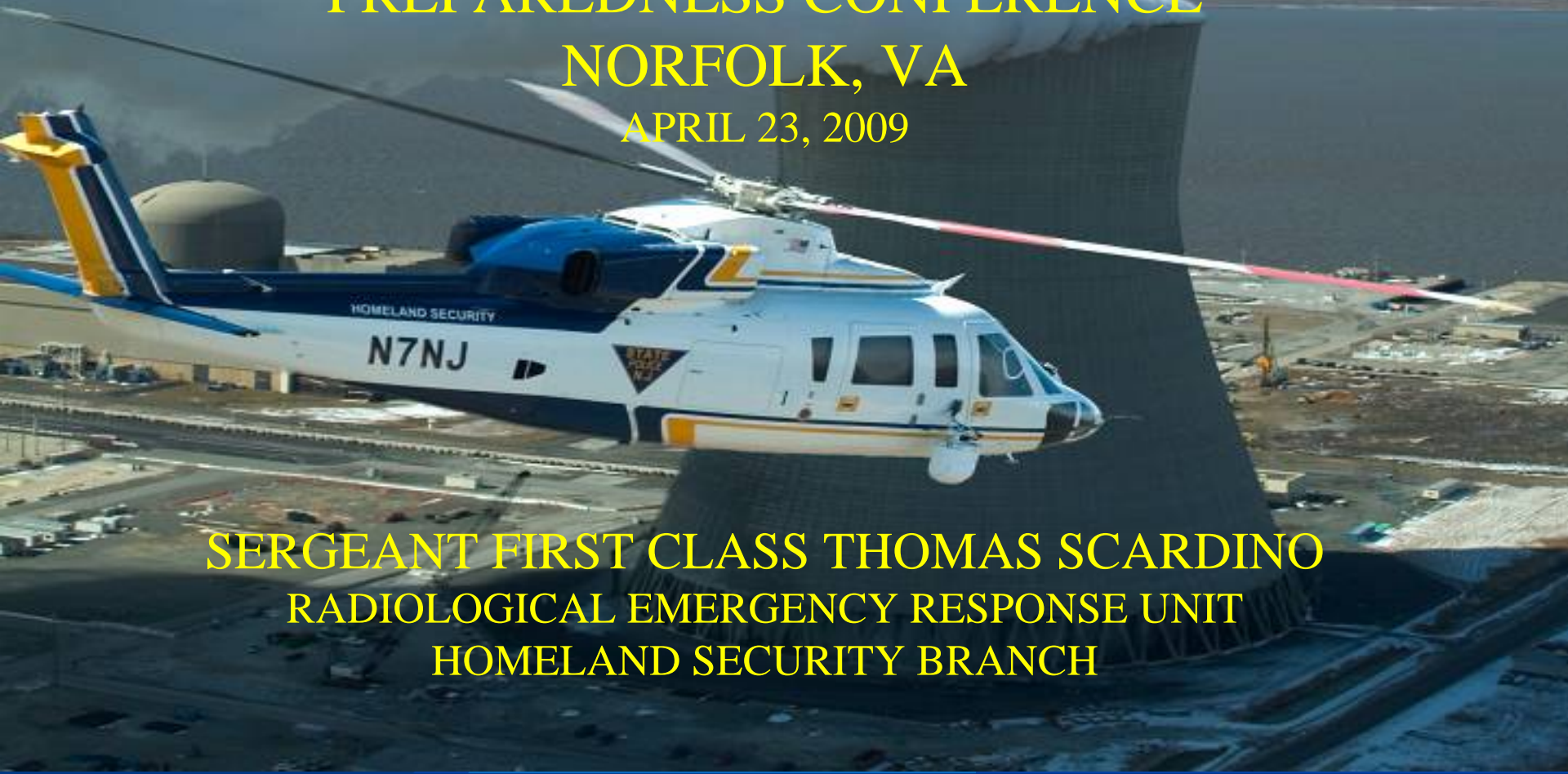


NEW JERSEY STATE POLICE RESPONSE TO HOSTILE ACTION AT NUCLEAR POWER PLANTS

**NATIONAL RADIOLOGICAL EMERGENCY
PREPAREDNESS CONFERENCE**

NORFOLK, VA

APRIL 23, 2009



**SERGEANT FIRST CLASS THOMAS SCARDINO
RADIOLOGICAL EMERGENCY RESPONSE UNIT
HOMELAND SECURITY BRANCH**

NUCLEAR POWER PLANTS IN NEW JERSEY



SALEM/HOPE CREEK
HABD MAY 19, 2009



OYSTER CREEK
HABD SEPTEMBER 9, 2008

HABD LESSONS LEARNED

SUCCESSSES IN THE GARDEN STATE

- NEW JERSEY STATE POLICE and NJOEM
ORGANIZATIONAL MAKE-UP

Superintendent of State Police/State Director
OEM

Connectivity to response resources

Radiation Accident Response Act 2D:48-2

EMERGENCY MANAGEMENT SECTION



FIELD TRAINING



OPERATIONS CENTER



REGIONAL OFFICES



SUPPORT SERVICES



COMMUNICATIONS



URBAN SEARCH
AND RESCUE



RADIOLOGICAL



PUBLIC ASSISTANCE/
HAZARD MITIGATION

SPECIAL OPERATIONS SECTION



HAZMAT



CANINE



AVIATION



TEAMS



MARINE SERVICES



GOVERNMENTAL
SECURITY



ARSON/BOMB



TRANSPORTATION
SAFETY

ADVANTAGES OF OEM / NJSP INCORPORATION

DYNAMIC

- **STATEWIDE RESOURCES**
- **24/7 READINESS**
- **INTEROPERABLE COMMUNICATIONS**
- **IMMEDIATE RESPONSE CAPABILITY**
- **RECOVERY RESOURCES**

DIVERSE

- **EMERGENCY SERVICES**
- **INTELLIGENCE SERVICES**
- **INVESTIGATIVE SERVICES**
- **AVIATION SERVICES**
- **MARINE SERVICES**
- **TACTICAL SERVICES**



PARA-MILITARY

- **COMMAND & CONTROL**
- **DISCIPLINED PERSONNEL**
- **TRAINING & EXPERIENCE**
- **LOGISTICS & SUPPORT**
- **STATE OF THE ART EQUIPMENT**

COORDINATION

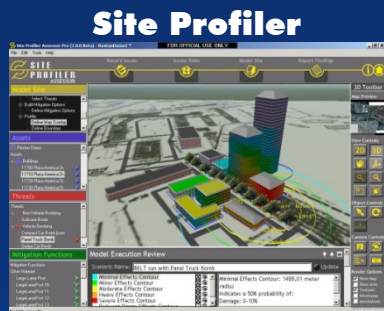
- **LONG STANDING RELATIONSHIPS:**
 - Federal Agencies**
 - State Agencies**
 - County Agencies**
 - Municipal Agencies**
 - Private Organizations**

NEW JERSEY REGIONAL OPERATIONS INTELLIGENCE CENTER



THE JOINT ROIC / 9-1-1 CENTER / EMERGENCY OPERATIONS CENTER FACILITY

EMERGENCY PREPAREDNESS INFORMATION NETWORK



Communicator



Resource Directory



Database (RDD)



Critical Assets



Tracking System (CATS)

REGIONAL OPERATIONS INTELLIGENCE CENTER

PRIVATE PARTNERSHIPS



PUBLIC SAFETY



HOMELAND SECURITY



Roles, responsibilities, and resource contributions defined in MOU

Staffing Equipment Facility Databases



INVESTIGATIVE SERVICES



INFRASTRUCTURE SECURITY



INTELLIGENCE



SCHOOL SECURITY INITIATIVE

HABD LESSONS LEARNED

SUCSESSES IN THE GARDEN STATE



- Nuclear Power Plant Security Working Group
- Established Post-9/11
- Consists of Site Security, Site EP, LLEA, OEM, State Police, Tactical Teams
- Meet on Bi-Weekly basis to share intelligence, training opportunities and industry trends
- Written Annex to NJ RERP Plan

INCIDENT COMMAND POST CONSIDERATIONS

- Unified Command???
- Who has ultimate authority???
- Identify who will be there prior to drill
- Identify an alternate ICP location
- Establish your logistical concerns
- For HABD – Control of observers/evaluators
- You need adequate space for expansion

Incident Command Structure

- Oyster Creek HABD had an active ICP since 9/12/01
- Salem/Hope Creek utilized local police department (5 miles away)
- How large do you want to go?
- For HABD - Operations and Planning Sections
- ICP/EOC Interface
- Transfer of Command



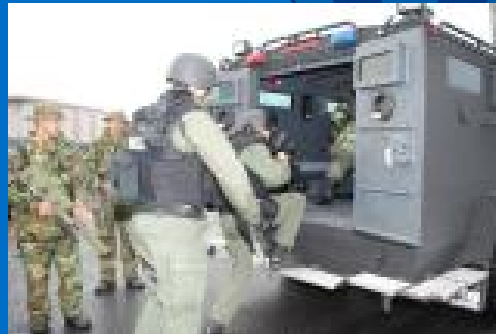
Hostile Action Pre-Planning Considerations

- Review gaps identified in CROWN Report
- Ensure communication link between Licensee, State Fusion Center, State EOC, LLEA is seamless
- NJ Regional Operations Intelligence Center (ROIC) handles all calls for NJ
- Notification of security event vs ECL?
MOU Established with Licensee's after Security Detail De-mobilized 12/24/08

HABD Off-Site Involvement



- Scenario should accommodate ORO's needs
- HABD should provide drill "value" for ORO's



SUMMARY

- IN LIGHT OF THE TERRORIST THREAT TO OUR CRITICAL INFRASTRUCTURE POST 9/11
- THE MERITS OF THE HADB WARRANT ITS INCLUSION INTO THE REP PROGRAM



A photograph of a white and blue helicopter with yellow and black stripes, flying over a nuclear power plant. The helicopter has "HOMELAND SECURITY" and "N7NJ" written on its side. In the background, a large cooling tower is emitting a thick plume of white steam into a blue sky with scattered clouds. The power plant's containment domes and various structures are visible on the ground.

QUESTIONS

THANK YOU

SFC Thomas Scardino, NJSP

609-963-6900 ext. 6721

lppscart@gw.njsp.org