

# Monitoring a Supervolcano in Repose: Heat and Volatile Flux at the Yellowstone Caldera

Jacob B. Lowenstern\* and Shaul Hurwitz\*

DOI: 10.2113/GSELEMENTS.4.1.35



**A**lthough giant calderas (“supervolcanoes”) may slumber for tens of thousands of years between eruptions, their abundant earthquakes and crustal deformation reveal the potential for future upheaval. Any eventual supereruption could devastate global human populations, so these systems must be carefully scrutinized. Insight into dormant but restless calderas can be gained by monitoring their output of heat and gas. At Yellowstone, the large thermal and CO<sub>2</sub> fluxes require massive input of basaltic magma, which continues to invade the lower to mid-crust, sustains the overlying high-silica magma reservoir, and may result in volcanic hazard for millennia to come. The high flux of CO<sub>2</sub> may contribute to the measured deformation of the caldera floor and can also modify the pressure, thermal, and chemical signals emitted from the magma. In order to recognize precursors to eruption, we must scrutinize the varied signals emerging from restless calderas with the goal of discriminating magmatic, hydrothermal, and hybrid phenomena.

KEYWORDS: Yellowstone, caldera, volatiles, heat, supervolcano

## EVALUATING FUTURE ERUPTIVE POTENTIAL AT LARGE CALDERAS

Over the past 2.1 million years, the Yellowstone Plateau volcanic field has produced two of the largest and most devastating eruptions documented on Earth. When will it erupt again, or might it have reached the end of its volcanic lifetime? With extended breaks between eruptive episodes, the most recent now reaching 70,000 years, large calderas like Yellowstone present special challenges to hazard assessment (Christiansen et al. 2007). In 2006 alone, Yellowstone experienced over 1200 earthquakes, and parts of its caldera rose more than 7 cm (volcanoes.usgs.gov/yvo/monitoring.html). Yet how can we determine the relevance of this dynamism to eruptive potential? How can we know whether the volcano is recharging for future activity or simply cooling and stagnating? Herein we explore the insight afforded by heat and volatile flux. By *volatile*, we refer to chemicals within gases or brines (salty liquids) released during depressurization and crystallization of magma. At the ground surface, some volatiles emerge as gases (CO<sub>2</sub> and H<sub>2</sub>S) whereas others are dissolved in groundwater (Cl<sup>-</sup>, F<sup>-</sup>, SO<sub>4</sub><sup>2-</sup>, HCO<sub>3</sub><sup>-</sup>). We use the Yellowstone Caldera as our primary example and show how a simple analysis of gas and heat flux informs our understanding of one of Earth’s most powerful volcanoes.

## HEAT AND MASS DISCHARGE AT THE YELLOWSTONE CALDERA

The Yellowstone Caldera formed 640,000 years ago when >1000 km<sup>3</sup> of rhyolitic magma erupted catastrophically, creating deposits of the Lava Creek Tuff (Christiansen 2001). The elliptical caldera measures about 80 × 50 km (FIG. 1) and is the site of thousands of annual earthquakes and abundant ground-surface displacements (Smith and Braile 1994; Christiansen et al. 2007). Uplift/subsidence (bradyseismic) cycles focused on the resurgent domes (FIG. 1) can last decades, with tens of centimeters of net change (Dzurisin et al. 1990; Smith and Braile 1994; Wicks et al. 2006). Since the caldera formed, it has partly filled with over 500 km<sup>3</sup> of erupted rhyolitic lava. A much smaller volume of basaltic magma has erupted, but solely outside the margins of the caldera (Christiansen 2001; Christiansen et al. 2007). The lack of intracaldera basaltic volcanism is interpreted to reflect the existence of a significant volume of silicic magma beneath the caldera that prevents the denser, mantle-derived basaltic magma from rising to the surface (Hildreth 1981; Hildreth et al. 1991; Christiansen 2001). The existence of a silicic upper-crustal magma reservoir is consistent with seismic velocity and gravity anomalies as well as with the shallow depth of the seismogenic zone beneath the caldera (Smith and Braile 1994; Husen et al. 2004). The magmas provide the heat that sustains the unparalleled number of hot springs, geysers, and mud pots on the Yellowstone Plateau (FIG. 2).

## Yellowstone’s Hydrothermal System

As described below, scientists can quantify heat and volatile fluxes by monitoring the volume and composition of emitted hydrothermal fluids (i.e. hot waters and gases). At Yellowstone, soluble magmatic volatiles emerge at the ground surface dissolved in hot spring waters. Neutral to alkaline, Cl<sup>-</sup>-rich waters generally issue at lower elevations, where they create terraces of amorphous silica (sinter) along the outflow of geysers and springs (Fournier 1989). These waters originate from subsurface, high-temperature (>200°C) hydrothermal reservoirs, and cool and boil as they rise. Isotopic data show the water to be dominantly meteoric in origin, having traveled decades (or more) prior to discharge (Rye and Truesdell 1993). Far different are the low-Cl<sup>-</sup>, acid waters of Yellowstone, emitted principally at higher elevations (FIG. 1), often in the eastern part of the caldera. These waters form when gases (mainly steam, CO<sub>2</sub>,

\* U.S. Geological Survey  
345 Middlefield Road  
Menlo Park, CA 94025, USA  
E-mail: jlwstn@usgs.gov; shaulh@usgs.gov

and H<sub>2</sub>S) are released by the boiling Cl-rich waters of the deep hydrothermal system and condense just below the ground surface (Fournier 1989). Subsequent oxidation of H<sub>2</sub>S creates sulfuric acid, which reacts with the rhyolitic surface rocks to form clays and muds, and these materials dominate the resulting steam-heated (also called acid-sulfate) thermal areas. Very little thermal water flows away from these steam-heated terrains (Fournier 1989).

### Estimated Heat Flow

The water expelled from Yellowstone's hydrothermal system carries considerable heat, which in turn reflects the presence of magma below. Fournier et al. (1976) first estimated heat flow at Yellowstone by tallying the total Cl<sup>-</sup> flux through its rivers using stream gages combined with periodic chemical analyses. They assumed that the Cl<sup>-</sup> was almost entirely derived from a deep parent water of known composition and heat content. Geochemical characteristics of Yellowstone hot springs provided corroborating evidence for the single parent fluid and its initial temperature of 340°C (Fournier 1989 and references therein). The total Cl<sup>-</sup> flux could then be tied to a mass of parent water. The calculations account for the heat content of the released Cl-rich waters as well as the boiling they undergo during ascent and lateral transport. The method can thereby account for heat flow at distal steam-heated areas as well as

at the geyser basins where the boiling waters actually emerge. By quantifying the total Cl<sup>-</sup> flux through the rivers of Yellowstone, a heat flow or power output was calculated to range from 4.5 to 6.0 GW (Fournier 1989; Friedman and Norton 2007), corresponding to a heat flux density of 1550 to 2100 mW m<sup>-2</sup> over the entire 2900 km<sup>2</sup> caldera, about 30–40 times that of the neighboring Rocky Mountains. If this high surface heat flux were transferred by conduction alone, it would imply a temperature gradient of 700 to 1000°C per kilometer (Fournier 1989), suggesting the presence of very shallow magma; however, research drilling in the 1960s (White et al. 1971) revealed temperature–depth relations inconsistent with temperatures exceeding ~310°C at 1000 m. Clearly, the enormous hydrothermal system is able to act as a wick, transferring heat advectively from a deep but very large magma source.

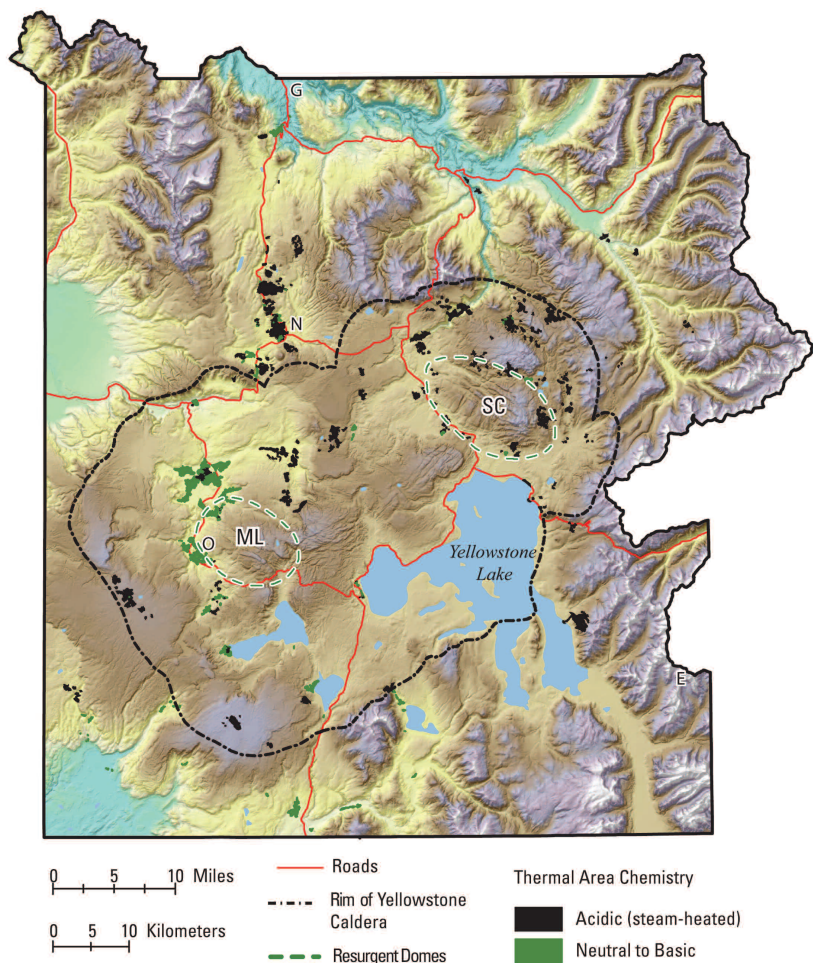
### Dissolved Volatile Flux

Since 1983, scientists have continued to track Cl<sup>-</sup> flux from the Yellowstone hydrothermal system by monitoring the discharge and composition of the park's rivers (Friedman and Norton 2007). Recently, the protocol was expanded to include SO<sub>4</sub><sup>2-</sup>, HCO<sub>3</sub><sup>-</sup>, F<sup>-</sup>, and Br<sup>-</sup> (Hurwitz et al. 2007a). TABLE 1 lists the average annual dissolved fluxes for Cl, F, S, and CO<sub>2</sub> between 2002 and 2004. Significant proportions of these volatiles are transported to the hydrothermal system by the degassing of deeper magmas. However, Cl<sup>-</sup> and F<sup>-</sup> may also be leached from previously erupted rhyolitic rocks that now host the shallow hydrothermal system. Some of the HCO<sub>3</sub><sup>-</sup> and SO<sub>4</sub><sup>2-</sup> can be derived from pre-Tertiary metasedimentary basement rocks. Also, S will be fixed within the hydrothermal system during water–rock interaction. One important goal for scientists is to estimate the proportion of these volatile constituents that is directly derived from active magma degassing beneath Yellowstone.

### Gas Flux

Additional volatiles emerge at the ground surface in gaseous form, both by diffuse degassing through soils and directly from bubbling pools and fumaroles. Werner and Brantley (2003) mapped the distribution of diffuse soil emissions of CO<sub>2</sub> at a variety of thermal areas at Yellowstone. They found low CO<sub>2</sub> fluxes through soils near terrains in which silica sinter and travertine (CaCO<sub>3</sub>) were forming compared to those in the acid, steam-heated regions of the park. We infer that the neutral, high-Cl waters discharged from sinter-forming terrains are comparatively degassed after migrating laterally through and beneath the lava flows that surround the low-elevation geyser basins. When such waters boil, they also provide abundant gas (mainly CO<sub>2</sub>, H<sub>2</sub>, and H<sub>2</sub>S) to the overlying steam-heated areas. The mean diffuse CO<sub>2</sub> flux through soils in steam-heated thermal areas is 1250 g m<sup>-2</sup> d<sup>-1</sup>, about 40 to 60 times greater than typical biogenic yields in non-thermal regions (Werner and Brantley 2003).

Werner and Brantley (2003) extrapolated the CO<sub>2</sub> flux rates measured in a few selected areas to all active thermal areas in the park, and thereby estimated emissions of 45,000 ± 16000 t d<sup>-1</sup> (likely a minimum value because gases from fumaroles and bubbling pools were not included). The apparent CO<sub>2</sub> flux from Yellowstone is among the highest known for individual volcanic centers and is approximately 5% of the estimated global volcanogenic CO<sub>2</sub> flux (Werner and Brantley



**FIGURE 1** Shaded-relief image showing topography and pertinent features of Yellowstone National Park. Thermal area database courtesy of A. Rodman, Yellowstone National Park. The maximum elevation is 3640 m at Eagle Peak (E) along the east boundary, and the lowest elevation (1608 m) is at the North Entrance near Gardiner, Montana (G). Other features include Old Faithful (O), the Norris Geyser Basin (N), and the Mallard Lake (ML) and Sour Creek (SC) resurgent domes.



2003). Based mainly on carbon and helium isotopes, Werner and Brantley (2003) estimated that 30–50% of the CO<sub>2</sub> output at Yellowstone was derived from pre-Tertiary basement rocks, with the remainder degassed from magma.



**FIGURE 2** Pools at Porcelain Basin within Norris Geyser Basin can contain “mixed” waters with characteristics of both high-Cl, neutral waters and low-pH acid waters typical of steam-heated areas. The water appears milky due to the presence of suspended colloidal opal, a hydrated, poorly crystalline form of silica. Photo by B. Graham Wall, USGS, taken from a 2 m diameter, helium-filled balloon deployed in September 2005. Field of view is ~20 meters wide.

## BASALT, CO<sub>2</sub>, AND THE YELLOWSTONE CALDERA

The preceding discussion summarized current estimates for the flux of volatile constituents and heat from the Yellowstone Caldera. Because there are few sinks for significant volumes of CO<sub>2</sub> and Cl within the magma–hydrothermal system, these fluxes provide powerful constraints on the deep magmatic system. One seemingly clear implication is that CO<sub>2</sub> (and heat) are derived from degassing basaltic magma that underlies the upper- to mid-crustal rhyolitic magma reservoir (White et al. 1988; Christiansen 2001). Aside from the isotopic evidence for magmatic CO<sub>2</sub> and He, the existing CO<sub>2</sub> flux is high enough to rapidly exhaust any plausible non-magmatic source such as limestone (Werner and Brantley 2003). Even some kinds of magma sources are difficult to reconcile with this phenomenal gas flux. The volume of the silicic magma reservoir beneath Yellowstone is estimated at  $\sim 1.5 \times 10^4 \text{ km}^3$  (Lowenstern et al. 2006), and based on the compositions of silicate melt inclusions (now glasses) enclosed within crystals in erupted rhyolites (TABLE 1), Yellowstone silicic magmas contain less than 500 ppm dissolved CO<sub>2</sub>. At the current diffuse degassing rate, such a magma body would be entirely purged of dissolved CO<sub>2</sub> in about 1000 years. Similarly, sulfur would be completely degassed in less than 40,000 years. Assigning the annual CO<sub>2</sub> flux to a plausible amount of annually degassed and crystallized rhyolitic magma (0.1 km<sup>3</sup>; Fournier 1989) requires 5.5 wt% CO<sub>2</sub>, about 20 times that which can be dissolved at 400 MPa (~16 km depth) in rhyolitic liquid (Lowenstern 2001).

The relative proportions of emitted volatiles are also inconsistent with the degassing of silicic magma (FIG. 3). Like silicate melt inclusions from other rhyolitic lavas and tuffs (Wallace 2005), those from Yellowstone contain abundant dissolved Cl and F, but scarce CO<sub>2</sub> and S (A. Abedini, S. Hurwitz, and J. Lowenstern, unpublished data shown in TABLE 1). Yet orders of magnitude more CO<sub>2</sub> is emitted

through the Yellowstone hydrothermal system than Cl, F, or S (TABLE 1). In contrast, basaltic magmas generally contain lower concentrations of dissolved Cl and F, and their composition and origin at mantle pressures permit them to contain 10 to 30 times more dissolved CO<sub>2</sub> (and S) than a mid-crustal rhyolite (Lowenstern 2001 and references therein). Also, thermal considerations dictate that the volume of basaltic magma parental to the rhyolite (or those basaltic intrusions inducing crustal melting) will be at least three to five times greater than that of any derivative silicic magma (White et al. 2006). Thus, basaltic intrusions could contain 50 to 100 times more available CO<sub>2</sub> than the silicic magmas themselves. The basaltic input means that magma continues to accumulate and sustains the overlying silicic magma reservoir (FIG. 3).

If basaltic magmas provide half the CO<sub>2</sub> degassed at Yellowstone (the rest coming from carbonate rocks), associated intrusion, cooling, crystallization, and/or large-scale convection could provide much of the observed heat flow. Parental basalts from Kilauea (Hawai’i) are estimated to have 0.7 wt% CO<sub>2</sub> (Gerlach et al. 2002); more-fertile mantle, as would be expected beneath Yellowstone, would be more CO<sub>2</sub> rich (Thordarson and Self 1996; Dixon et al. 1997; Lowenstern 2001). Assuming 1 wt% CO<sub>2</sub> in mantle-derived basalt, an intrusion rate of 0.3 km<sup>3</sup> y<sup>-1</sup> would be required to produce the observed gas flux. An intrusion rate of 0.3 km<sup>3</sup> y<sup>-1</sup> is comparable to, though slightly higher than, those estimated for Kilauea and the Columbia River Basalt (Gerlach et al. 2002; Lange 2002). This intrusion rate would create a power output of 22 GW (assuming full crystallization and further cooling of 300°C), about 3 times the minimum observed heat flow (Fournier 1989). Less heat might be expected if the intruding basalt loses heat laterally, or if it degasses during ascent with minimal cooling and crystallization.

Notwithstanding the uncertainties in absolute gas and heat fluxes, both variables clearly point towards high intrusion rates of basaltic magma, comparable to those of the Hawaiian hotspot and up to 100 times the long-term eruption rate of rhyolite in Yellowstone (0.003 km<sup>3</sup> y<sup>-1</sup>; Christiansen 2001). Evidence points to a dense, high-velocity mid-crust beneath the Snake River plain, consistent with emplacement and crystallization of basaltic magma throughout the 16-million-year history of the Yellowstone hotspot (Smith and Braile 1994; Shervais et al. 2006). Models for the generation of Yellowstone rhyolites involve

**TABLE 1** VOLATILE ABUNDANCES IN YELLOWSTONE RIVERS, SOIL GASES, AND LAVAS

	River solute flux 2002–2004 (t d <sup>-1</sup> )*	Diffuse soil flux (t d <sup>-1</sup> )**	Average MI post-caldera rhyolite (ppm)***	Average MI Columbia River Basalt (ppm)****
Cl	137	-	1100	295
F	17	-	2000	1310
S	56	164	<100	1965
CO <sub>2</sub>	553	45,000	0 to 400	1 wt%

\* From Hurwitz et al. (2007a). River flux for S and CO<sub>2</sub> recalculated from SO<sub>4</sub><sup>2-</sup> and HCO<sub>3</sub><sup>-</sup>.

\*\* CO<sub>2</sub> value from Werner and Brantley (2003). Soil flux of S assumes a molar ratio for CO<sub>2</sub>/H<sub>2</sub>S of 200.

\*\*\* Quartz-hosted silicate melt inclusions (MI) from postcaldera rhyolites at Yellowstone analyzed by electron microprobe and Fourier transform infrared spectroscopy (n = 50). Unpublished data from A. Abedini, J. Lowenstern, and S. Hurwitz

\*\*\*\* Melt inclusions in olivine reported by Thordarson and Self (1996) for Cl, F, and S. The CO<sub>2</sub> estimate is based on values for initial mantle melts inferred for similar trace-element-enriched tholeiite sources (Lowenstern 2001).

crystallization and/or melting of abundant mafic (basaltic composition) sources in the lower crust combined with 10 to 30% melting of radiogenic crust (Hildreth et al. 1991). Gas released during ascent and crystallization of the basaltic magma would be too abundant to dissolve within the overlying silicic magma and hydrothermal system, effectively saturating the crust with CO<sub>2</sub>-rich gas.

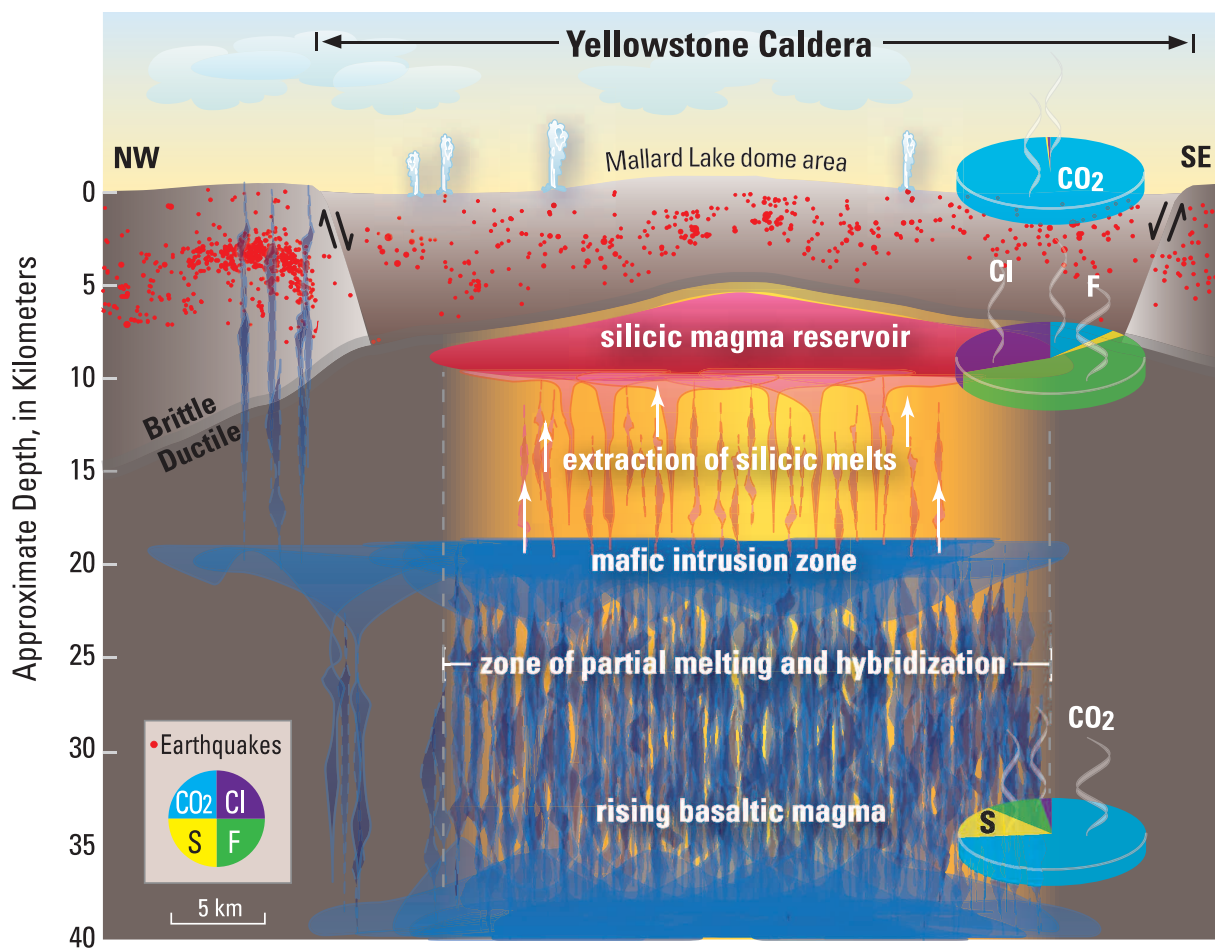
### GAS SATURATION IN THE YELLOWSTONE SUBSURFACE

The impressive gas discharge hints that the shallow subsurface beneath Yellowstone should be gas saturated over a wide depth-temperature range. An initial understanding is gained by comparing the CO<sub>2</sub> flux to that of the Cl<sup>-</sup> released through rivers. If the two volatiles are currently emerging from the hydrothermal system at their long-term rates, then the CO<sub>2</sub>/Cl<sup>-</sup> mass ratio in the subsurface can be estimated at ~300 (TABLE 1). Fournier (1989 and references therein) inferred the existence of a parent thermal water with 400 ppm Cl<sup>-</sup>. If the gas could be dissolved back into that water, the CO<sub>2</sub> concentration would be 400 ppm multiplied by 300, equaling 12 wt% (or 5 mol%). However, under most pressure and temperature conditions, the CO<sub>2</sub> is too abundant to dissolve completely, as demonstrated in FIGURE 4, which displays the phase boundaries in the system 95% H<sub>2</sub>O–5% CO<sub>2</sub>, assuming a hydrostatic pressure gradient. Model calculations suggest that the upper 4 km of the

Yellowstone subsurface should host a two-phase hydrothermal system containing liquid water and bubbles of a mixed steam–CO<sub>2</sub> vapor phase. The relative abundance of the two phases can be estimated for a common pressure–temperature regime at Yellowstone: 1 km depth and 250°C (red square in FIGURE 4). Under those conditions, a 95% H<sub>2</sub>O–5% CO<sub>2</sub> fluid cannot exist as a single phase, but would mix into a vapor phase (50% CO<sub>2</sub>) and liquid water with minor dissolved gas. The vapor phase would have a volume approximately equal to that of the liquid. In reality, the two phases are unlikely to remain together and would separate, so that vapor-dominated hydrothermal reservoirs could form above areas of deep boiling and degassing (White et al. 1971; Fournier 1989). The key point is that the considerable flux of CO<sub>2</sub> almost certainly requires that large portions of the hydrothermal system beneath Yellowstone are gas saturated, plausibly down to depths of 4 km or more.

### IMPLICATIONS OF A GAS-RICH SUBSURFACE

Gas-rich conditions in the shallow subsurface may relate to the origin and style of long-timescale deformation (bradyseisms), the dominant form of unrest at calderas around the world. At the Phlegrean Fields in Italy, the correlation of caldera uplift with the CO<sub>2</sub>/H<sub>2</sub>O ratios of fumarolic gases was ascribed to magmatic gas input and pressurization of the shallow hydrothermal system (Chiodini et al. 2003). Recent numerical models (Todesco et al. 2004; Hurwitz et



**FIGURE 3** Schematic cross-section of the crust beneath the Yellowstone Caldera based on Hildreth (1981) and Husen et al. (2004). Red dots represent earthquake epicenters. The silicic magma reservoir is responsible for most of the volcanism over the past 2.1 million years and overlies a middle and lower crust invaded by mantle-derived basalt. The silicic magma is a hybrid of crustal melts and residual liquid formed as mafic magma cools and crystallizes. Magma rises

closest to the surface (5–7 km depth) beneath the resurgent domes. Pie diagrams compare the relative abundances of volatiles emitted from the Yellowstone hydrothermal system (top) with the abundances of volatiles dissolved in Yellowstone rhyolites (middle) and hotspot basalts (bottom). The CO<sub>2</sub>-rich hydrothermal system appears to reflect the basalt-dominated crust below. The diagrams are constructed with data from TABLE 1.



al. 2007b) and geophysical studies (Gottsmann et al. 2007) highlight the role of gas and aqueous fluid dynamics in caldera deformation. At Yellowstone, bradyseismic events typically are linked to magma intrusion (Wicks et al. 2006) or to upward migration of brines from hot, low-permeability regions (Dzurisin et al. 1990). Without continuous monitoring of volatile flux and comparison with geophysical time series, it remains difficult to verify any particular mechanism of deformation.

Even if the gas is immobile, just the existence of vapor-saturated conditions in the shallow crust should affect the manner in which any hydrothermal region transmits pressure pulses between magma and the ground surface (Norton 1984). Surface displacements are commonly interpreted by assuming a volume change in a discrete magmatic source embedded in a deforming, elastic, isotropic crust; such assumptions would likely lead to underestimating the size and depth of any magma source beneath a gas-rich, compressible hydrothermal system (Dzurisin 2007; Hurwitz et al. 2007b). Clearly, any added insight on the abundance of volatiles and their dynamics in the shallow crust will help us to assess which signals of caldera unrest are most likely to foretell an impending eruption (Newhall and Dzurisin 1988).

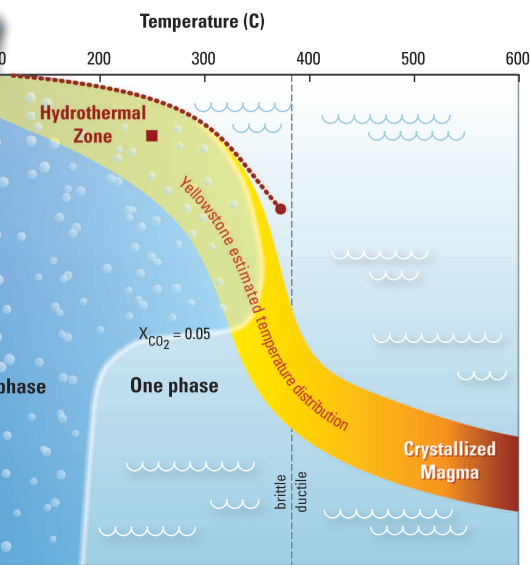
## LINGERING QUESTIONS ON VOLATILES, VOLCANOES, AND THE FUTURE OF YELLOWSTONE

It now seems quite certain that abundant basaltic magma intrudes the crust beneath the Yellowstone Caldera, stoking the fires beneath the silicic magma and flooding the overlying hydrothermal system with gas. Yet important and fascinating questions remain. How variable is the surface gas flux at timescales ranging from daily to millennial? Is it possible that current emissions result from a temporary (postglacial?), increased rate of hydrothermal discharge that reflects shallow hydrothermal processes more than the deep intrusions discussed above? If so, increased hydrothermal flow might be cooling the underlying magma and decreasing the long-term volcanic hazard. It is also possible that Yellowstone has remained dormant for so long because its magmas and hydrothermal system are very efficient at releasing their heat and volatiles, thus preventing buildup of magmatic pressure. Ultimately, we cannot assess these issues without greater understanding of the origin, variability, and significance of measured geochemical fluxes and their relationship to the geophysical data that have been collected for decades. Monitoring of heat and volatile flux is only beginning, but it holds great promise to aid us in deciphering the signals emitted by Earth's giant calderas: someday, that ability may save our lives.

## REFERENCES

- Chiodini G, Todesco M, Caliro S, Del Gaudio C, Macedonio G, Russo M (2003) Magma degassing as a trigger of bradyseismic events: The case of Phlegrean Fields (Italy). *Geophysical Research Letters* 30: 1434-1437
- Christiansen RL (2001) The Quaternary and Pliocene Yellowstone Plateau Volcanic Field of Wyoming, Idaho, and Montana. U.S. Geological Survey Professional Paper 729-G, 145 pp
- Christiansen RL, Lowenstern JB, Smith RB, Heasler H, Morgan LA, Nathenson M, Mastin LG, Muffler LJP, Robinson JE (2007) Preliminary Assessment of Volcanic and Hydrothermal Hazards in Yellowstone National Park and Vicinity. U.S. Geological Survey Open-File Report 2007-071, 94 pp

- Dixon JE, Clague DA, Wallace P, Poreda R (1997) Volatiles in alkalic basalts from the North Arch volcanic field, Hawaii: extensive degassing of deep submarine-erupted alkalic series lavas. *Journal of Petrology* 38: 911-939
- Duan Z, Møller N, Weare JH (1992) An equation of state for the  $\text{CH}_4\text{-CO}_2\text{-H}_2\text{O}$  system: II. Mixtures from 50 to 1000°C and from 0 to 1000 bar. *Geochimica et Cosmochimica Acta* 56: 2619-2631
- Dzurisin D (2007) *Volcano Deformation: Geodetic Monitoring Techniques*. Springer Praxis, Berlin, 441 pp
- Dzurisin D, Savage JC, Fournier RO (1990) Recent crustal subsidence at Yellowstone Caldera, Wyoming. *Bulletin of Volcanology* 52: 247-270



**FIGURE 4** Temperature versus depth diagram, assuming a hydrostatic pressure gradient. The darker blue field represents conditions at which a 5%  $\text{CO}_2$ -95%  $\text{H}_2\text{O}$  (molar) fluid will unmix to form a water-dominated liquid and a  $\text{CO}_2$ -rich gas phase (Duan et al. 1992). The estimated temperature distribution reflects suprasolidus (i.e.  $>700^\circ\text{C}$ ) conditions at depths around 8 km (Husen et al. 2004) and temperatures close to the pure  $\text{H}_2\text{O}$  liquid-vapor curve (dotted red line) near the surface. Much of the upper few kilometers is predicted to be vapor saturated. Quartz-bearing rocks undergo a transition from brittle to ductile behavior at temperatures near  $400^\circ\text{C}$ . Phase relations at  $250^\circ\text{C}$  and 1000 m depth (the red square) are discussed in the text.

## ACKNOWLEDGMENTS

Our work is inspired by that of five of our USGS colleagues and mentors, Robert Christiansen, Robert Fournier, Irving Friedman, Patrick Muffler, and Donald White, who dedicated much of their careers to understanding Yellowstone's amazing volcanic and hydrothermal systems. We appreciate numerous stimulating discussions with them and with our Yellowstone Volcano Observatory colleagues Bob Smith and Hank Heasler. Tom Sisson, Bill Evans, and Cindy Werner (all USGS) provided helpful reviews, as did *Elements* reviewers Paul Wallace and Rick Hazlett. Atosa Abedini prepared and analyzed the melt inclusions in TABLE 1. Joel Robinson aided in the construction of FIGURE 1. Jeanne DiLeo provided the artist's touch evident in FIGURES 3 and 4. The USGS Volcano Hazards Program funds our research. ■

- Fournier RO, White DE, Truesdell AH (1976) Convective heat flow in Yellowstone National Park. In: *Proceedings of the 2nd U.N. Symposium on the Development and Use of Geothermal Resources*, San Francisco, pp 731-739
- Fournier RO (1989) Geochemistry and dynamics of the Yellowstone National Park hydrothermal system. *Annual Review of Earth and Planetary Sciences* 17: 13-53
- Friedman I, Norton DR (2007) Is Yellowstone losing its steam? Chloride flux out of Yellowstone National Park. In: Morgan LA (ed) *Integrated Geoscience Studies in the Greater Yellowstone Area: Volcanic, Hydrothermal and Tectonic Processes in the Yellowstone Geocosystem*. U.S. Geological Survey Professional Paper 1717, pp 271-298

Gerlach TM, McGee KA, Elias T, Sutton AJ, Doukas MP (2002) Carbon dioxide emission rate of Kilauea Volcano: Implications for primary magma and the summit reservoir. *Journal of Geophysical Research* 107: 2189, doi:10.1029/2001JB000407

Gottsmann J, Carniel R, Coppo N, Wooller L, Hautmann S, Rymer H (2007) Oscillations in hydrothermal systems as a source of periodic unrest at caldera volcanoes: Multiparameter insights from Nisyros, Greece. *Geophysical Research Letters* 34: L07307, doi: 10.1029/2007GL029594

Hildreth W (1981) Gradients in silicic magma chambers: Implications for lithospheric magmatism. *Journal of Geophysical Research* 86: 10153-10192

Hildreth W, Halliday AN, Christiansen RL (1991) Isotopic and chemical evidence concerning the genesis and contamination of basaltic and rhyolitic magma beneath the Yellowstone plateau volcanic field. *Journal of Petrology* 32: 63-138

Hurwitz S, Lowenstern JB, Heasler H (2007a) Spatial and temporal geochemical trends in the hydrothermal system of Yellowstone National Park: Inferences from river solute fluxes. *Journal of Volcanology and Geothermal Research* 162: 149-171

Hurwitz S, Christiansen LB, Hsieh PA (2007b) Hydrothermal fluid flow and deformation in large calderas: Inferences from numerical simulations. *Journal of Geophysical Research* 112: B02206, 16 pp, doi:10.1029/2006JB004689

Husen S, Smith RB, Waite GP (2004) Evidence for gas and magmatic sources beneath the Yellowstone volcanic field from seismic

tomographic imaging. *Journal of Volcanology and Geothermal Research* 131: 397-410

Lange RA (2002) Constraints on the preruptive volatile concentrations in the Columbia River flood basalts. *Geology* 30: 179-182

Lowenstern JB (2001) Carbon dioxide in magmas and implications for hydrothermal systems. *Mineralium Deposita* 36: 490-502

Lowenstern JB, Smith RB, Hill DP (2006) Monitoring super-volcanoes: Geophysical and geochemical signals at Yellowstone and other large caldera systems. *Philosophical Transactions of the Royal Society A364*: 2055-2072

Newhall CG, Dzurisin D (1988) Historical Unrest at Large Calderas of the World. U.S. Geological Survey Bulletin 1855, 1108 pp

Norton DL (1984) Theory of hydrothermal systems. *Annual Review of Earth and Planetary Sciences* 12: 155-177

Rye RO, Truesdell AH (1993) The Question of Recharge to the Geysers and Hot Springs of Yellowstone National Park. U.S. Geological Survey Open-File Report 93-384, 40 pp

Shervais JW, Vetter SK, Hanan BB (2006) Layered mafic sill complex beneath the eastern Snake River Plain: Evidence from cyclic geochemical variations in basalt. *Geology* 34: 365-368

Smith RB, Braile LW (1994) The Yellowstone hotspot. *Journal of Volcanology and Geothermal Research* 61: 121-187

Thordarson Th, Self S (1996) Sulfur, chlorine and fluorine degassing and atmosphere loading by the Roza eruption, Columbia River Basalt Group, Washington, USA. *Journal of Volcanology and Geothermal Research* 74: 49-73

Todesco M, Rutqvist J, Chiodini G, Pruess K, Oldenburg CM (2004) Modeling of recent volcanic episodes at Phlegrean Fields (Italy): geochemical variations and ground deformation. *Geothermics* 33: 531-547

Wallace PJ (2005) Volatiles in subduction zone magmas: concentrations and fluxes based on melt inclusion and volcanic gas data. *Journal of Volcanology and Geothermal Research* 140: 217-240

Werner C, Brantley S (2003) CO<sub>2</sub> emissions from the Yellowstone volcanic system. *Geochemistry, Geophysics, Geosystems* 4 (7): 1061, doi:10.1029/2002GC000473

White DE, Muffler LJP, Truesdell AH (1971) Vapor-dominated hydrothermal systems compared with hot-water systems. *Economic Geology* 66: 75-97

White DE, Hutchinson RA, Keith TEC (1988) The geology and remarkable thermal activity of Norris Geyser Basin, Yellowstone National Park, Wyoming. U.S. Geological Survey Professional Paper 1456, 84 pp

White SM, Crisp JA, Spera FJ (2006) Long-term volumetric eruption rates and magma budgets. *Geochemistry, Geophysics, Geosystems* 7: Q03010, doi:10.1029/2005GC001002

Wicks CW, Thatcher W, Dzurisin D, Svarc J (2006) Uplift, thermal unrest and magma intrusion at Yellowstone caldera. *Nature* 440: 72-75

# NEW BOOKS FROM AGU!

AGU publishes the highest quality in peer reviewed research that will enhance your Earth science library.



## Volcanism and Subduction: The Kamchatka Region

John Eichelberger, Evgenii Gordeev, Minoru Kasahara, Pavel Izbekov, Jonathan Lees, Editors  
2007, 350 pp., hardbound.  
ISBN: 978-0-87590-436-8

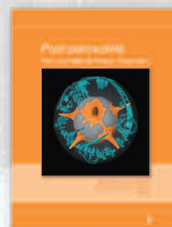
List Price: \$127.00  
AGU Member Price: \$88.90



## A Continental Plate Boundary: Tectonics at South Island, New Zealand

David Okaya, Tim Stern, Fred Davey, Editors  
2007, 253 pp., hardbound.  
ISBN: 978-0-87590-437-5

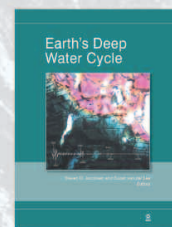
List Price: \$123.00  
AGU Member Price: \$86.10



## Post-Perovskite: The Last Mantle Phase Transition

Kei Hirose, John Brodholt, Thorne Lay, David Yuen, Editors  
2007, 350 pp., hardbound.  
ISBN: 978-0-87590-439-9

List Price: \$104.00  
AGU Member Price: \$72.80



## Earth's Deep Water Cycle

Steven D. Jacobsen, Suzan van der Lee, Editors  
2006, 314 pp., hardbound.  
ISBN: 978-0-87590-433-7

List Price: \$76.00  
AGU Member Price \$53.20



Readers of *Elements*, receive a 15% discount on the list price of all AGU books through June by using the promotional code ELM08 when ordering books at [www.aip.org/agu](http://www.aip.org/agu).