



# **Peach Bottom Annual Assessment Meeting**

**2008 Reactor Oversight Process**

**Nuclear Regulatory Commission – Region I**



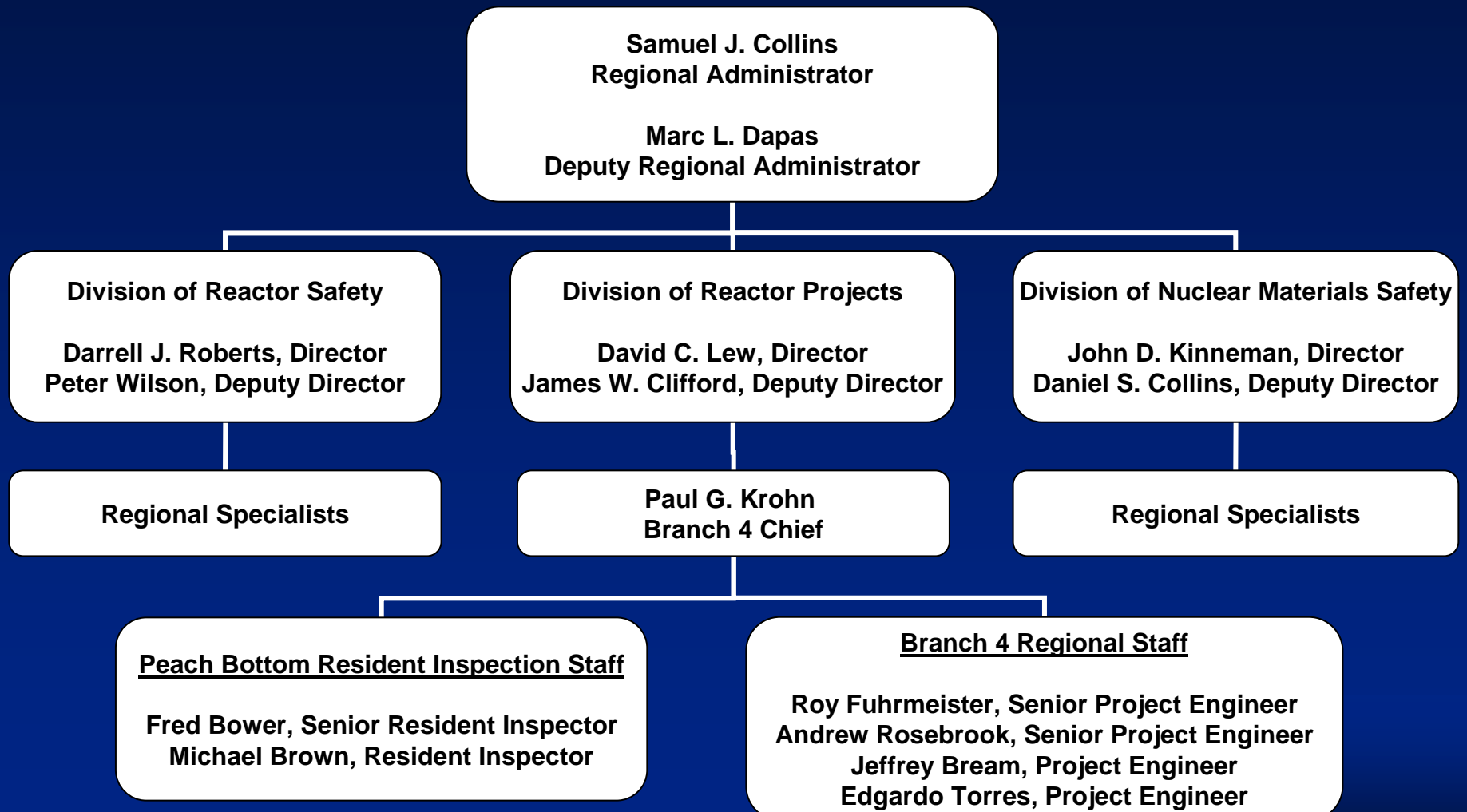
## **Purpose of Today's Meeting**

- **Discuss Peach Bottom Atomic Power Station performance for 2008**
- **Provide Exelon the opportunity to respond to the NRC's annual performance assessment and discuss their actions to maintain or improve performance**
- **Provide stakeholders the opportunity to address questions to the NRC staff regarding Peach Bottom plant performance and our role in ensuring safe plant operations**

## **Agenda**

- **Introduction**
- **NRC Organization and Performance Goals**
- **Reactor Oversight Process (ROP)**
- **National Summary of Plant Performance**
- **Peach Bottom Plant Performance Assessment**
- **Exelon Response and Remarks**
- **NRC Closing Remarks**
- **Break**
- **NRC available to address public questions**

## Region I Organization





## NRC Strategic Plan Goals

- **Safety**: Ensure adequate protection of public health and safety and the environment
- **Security**: Ensure adequate protection in the secure use and management of radioactive materials



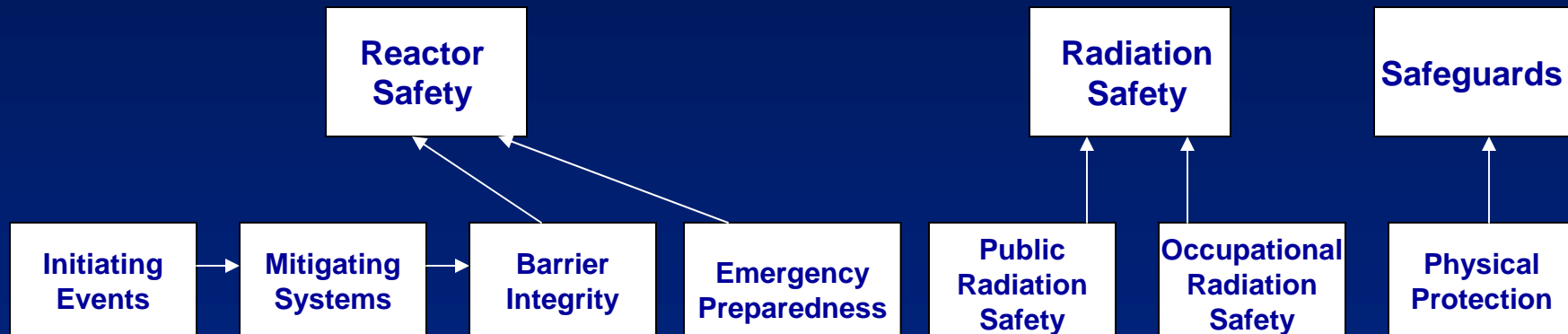
## **NRC Regulatory Functions**

### **What We Regulate**

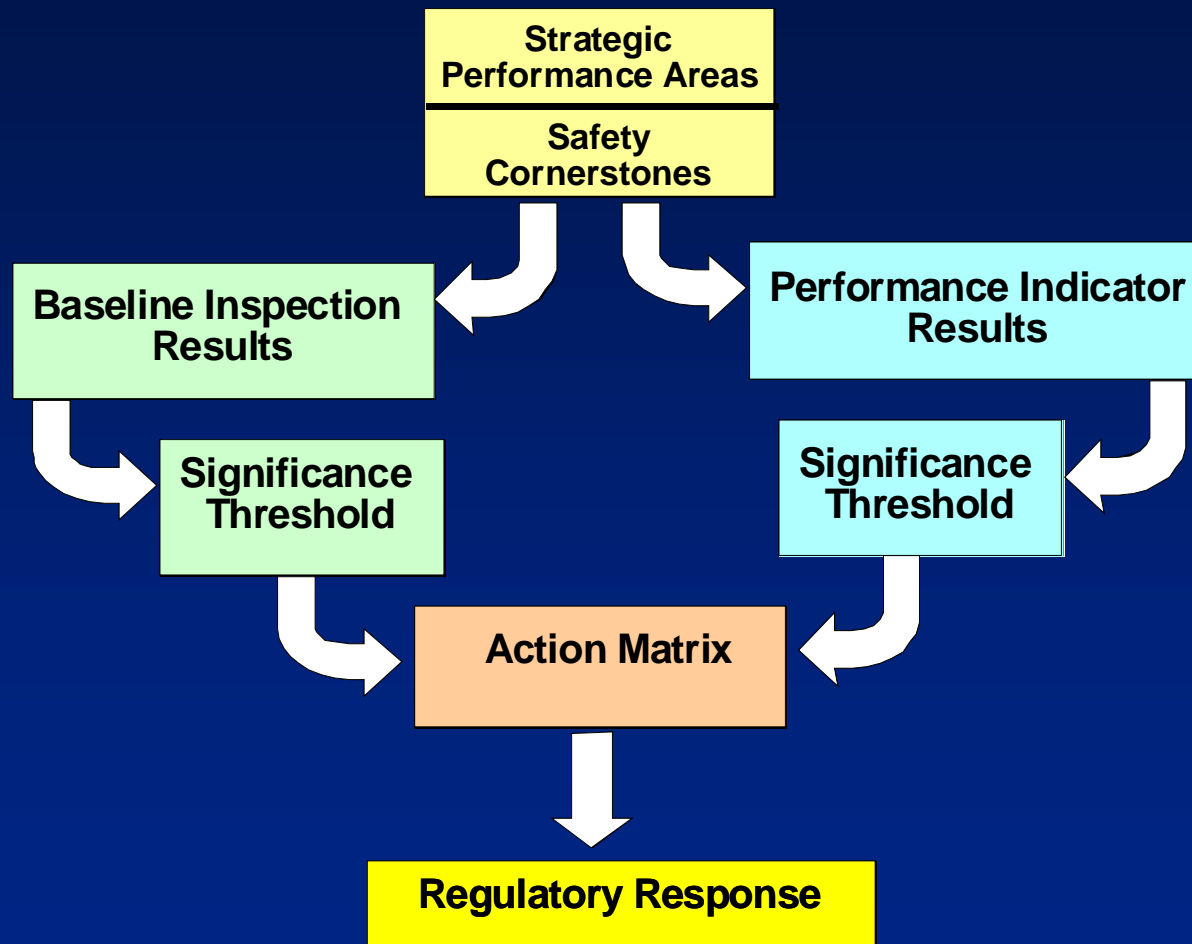
- **Nuclear Reactors**
  - Commercial power, research, test, and new reactor designs
- **Nuclear Material**
  - Reactor fuel, radioactive material for medical, industrial, and academic uses
- **Nuclear Waste**
  - Transportation, storage, disposal, and facility decommissioning
- **Nuclear Security**
  - Facility physical security

# Reactor Oversight Process

## 3 Strategic Areas & 7 Cornerstones



# Reactor Oversight Process







## Examples of Baseline Inspection Areas

- Maintenance
- Operator Training
- Emergency Preparedness
- Engineering
- Corrective Action Program
- Security Program
- Radiation Protection



## **NRC Performance Indicators**

- **Initiating Events PIs**
- **Mitigating Systems PIs**
- **Barrier Integrity PIs**
- **Emergency Planning PIs**
- **Radiation Protection PIs**
- **Security PIs (not Publicly Available)**

## Significance Threshold

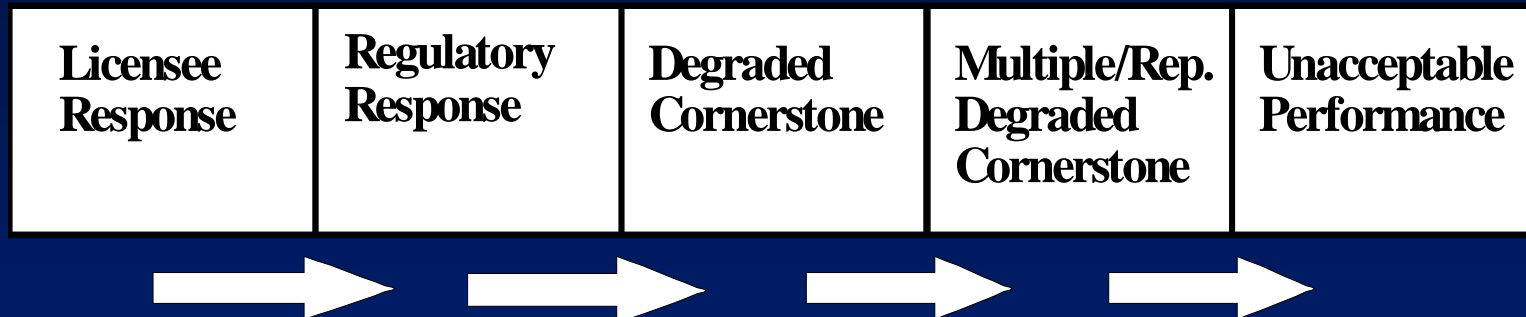
### Performance Indicators

- **Green**      Baseline Inspection
- **White**      Requires additional NRC oversight
- **Yellow**      Requires more NRC oversight
- **Red**      Requires most NRC oversight

### Inspection Findings

- **Green**      Very low safety issue
- **White**      Low to moderate safety issue
- **Yellow**      Substantial safety issue
- **Red**      High safety issue

## Action Matrix Concept



- Increasing Safety Significance
- Increasing NRC Inspection Efforts
- Increasing NRC/Licensee Management Involvement
- Increasing Regulatory Actions



# **National Summary of Plant Performance** **(at end of 2008)**

<b>Licensee Response</b>	<b>86</b>
<b>Regulatory Response</b>	<b>14</b>
<b>Degraded Cornerstone</b>	<b>3</b>
<b>Multiple/Repetitive Degraded Cornerstone</b>	<b>1</b>
<b>Unacceptable</b>	<b>0</b>
<hr/>	
<b>Total</b>	<b>104</b>



# National Summary of Plant Performance (at end of 2008)

## Performance Indicator Results

➤ Green	1762
➤ White	6
➤ Yellow	0
➤ Red	0

## Total Inspection Findings

➤ Green	776
➤ White	17
➤ Yellow	0
➤ Red	0



## **NRC Inspection Activities at Peach Bottom (for 2008)**

- **6651 hours of inspection and related activities**
- **2 resident inspectors on-site**
- **17 regional inspections**
- **9 major team inspections:**
  - Component Design Bases Inspection**
  - Deviation Memorandum Inspections**
  - Emergency Planning Exercise Evaluation**
  - Security Program Review**



## **Peach Bottom Pls / Findings** **(January 1 – December 31, 2008)**

- **All Green Performance Indicators**
- **12 Green inspection findings**
- **1 Severity Level - IV Traditional enforcement inspection finding**
- **1 White Inspection Finding.**



## **NRC Inspection Findings** **Peach Bottom**

- **Inadequate Extent of Condition Review for Emergency Service Water Pipe Leaks**
  - The licensee failed to look at redundant equipment when a leak was discovered on an elbow on the upstream side of the 'B' Emergency Service Water supply header to the E-1 Emergency Diesel Generator. As a result, identification of additional leaks associated with the E-3 and E-4 Emergency Diesel Generators was delayed.



## **Closure of the 2007 Inattentive Security Officers Event**

- In September 2007, NRC made aware of videos, which showed multiple occurrences of security officers inattentive to duty in the “ready room,” through a WCBS-TV (New York City) reporter
- NRC responded with enhanced oversight of security
- NRC conducted an Augmented Inspection Team (AIT) and an AIT Follow-up Inspection
- NRC issued a Confirmatory Action Letter (CAL) in October 2007



## **NRC Closure Actions Completed**

- NRC issued a White Finding for the inattentive security guards in accordance with the ROP in 2008.
- NRC conducted five security and SCWE focused Deviation Memo inspections in 2008. Actions complete.
- NRC closed the Confirmatory Action Letter August 28, 2008. Actions complete.
- NRC Issued a SL III NOV and \$65,000 Civil Penalty on January 9, 2009 based on deliberate misconduct.



## **2008 NRC Assessment Letter to Peach Bottom**

- The staff identified four inspection findings with a human performance cross-cutting aspect in the area procedure design documentation accuracy.
- The staff determined that Exelon had recognized the cross-cutting theme and had taken or scheduled to take appropriate corrective actions.
- The NRC will monitor Exelon's progress in the area of procedure and document accuracy through baseline inspections.



## **NRC Annual Assessment Summary** **Peach Bottom**

- All cornerstone objectives were fully met
- The White Security Finding was closed out at the end of the 3<sup>rd</sup> Quarter 2008
- The ROP Deviation Memo for security was allowed to expire at the end of 2008.
- NRC plans baseline inspections at Peach Bottom for the remainder of 2009



## **NRC Annual Assessment Summary** **Peach Bottom**

- **Exelon operated the plant in a manner that preserved public health and safety and protected the environment**
- **Peach Bottom was in the Licensee Response column of the NRC's Action Matrix for the last quarter of 2008**



## **Licensee Response and Remarks**

---

**William McGuire**

**Peach Bottom Site Vice President**

**Exelon Generation Company, LLC**



## Contacting the NRC

- Report a safety concern:
  - (800) 695-7403
  - [Allegation@nrc.gov](mailto:Allegation@nrc.gov)
- General information or questions:
  - [www.nrc.gov](http://www.nrc.gov)
  - Public Affairs Officers:
    - Diane Screnci 610-337-5330
    - Neil Sheehan 610-337-5331



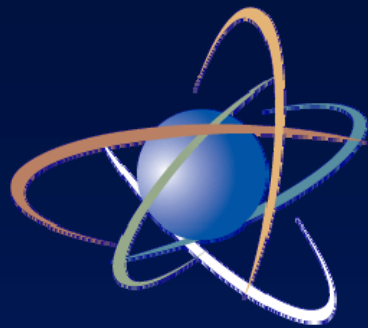


## **NRC Representatives**

- **David C. Lew, Division Director, DRP**
  - 610-337-5229
- **James W. Clifford, Deputy Division Director, DRP**
  - 610-337-5080
- **Paul G. Krohn, Branch Chief**
  - 610-337-5120
- **Fred Bower, Senior Resident Inspector**
  - 717-456-7614
- **Michael Brown, Resident Inspector**
  - 717-456-7614
- **Roy Fuhrmeister, Senior Project Engineer**
  - 610-337-5059
- **Andrew Rosebrook, Senior Project Engineer**
  - 610-337-5199

## Reference Sources

- Reactor Oversight Process
- <http://www.nrc.gov/NRR/OVERSIGHT/ASSESS/index.html>
- Public Electronic Reading Room  
<http://www.nrc.gov/reading-rm.html>
- Public Document Room  
**1-800-397-4209 (Toll Free)**



**U.S.NRC**

UNITED STATES NUCLEAR REGULATORY COMMISSION

*Protecting People and the Environment*

## **End of the Presentation**

**Nuclear Regulatory Commission**

**Region I**

**King of Prussia, Pennsylvania**

**April 14, 2009**

# **Peach Bottom Atomic Power Station**

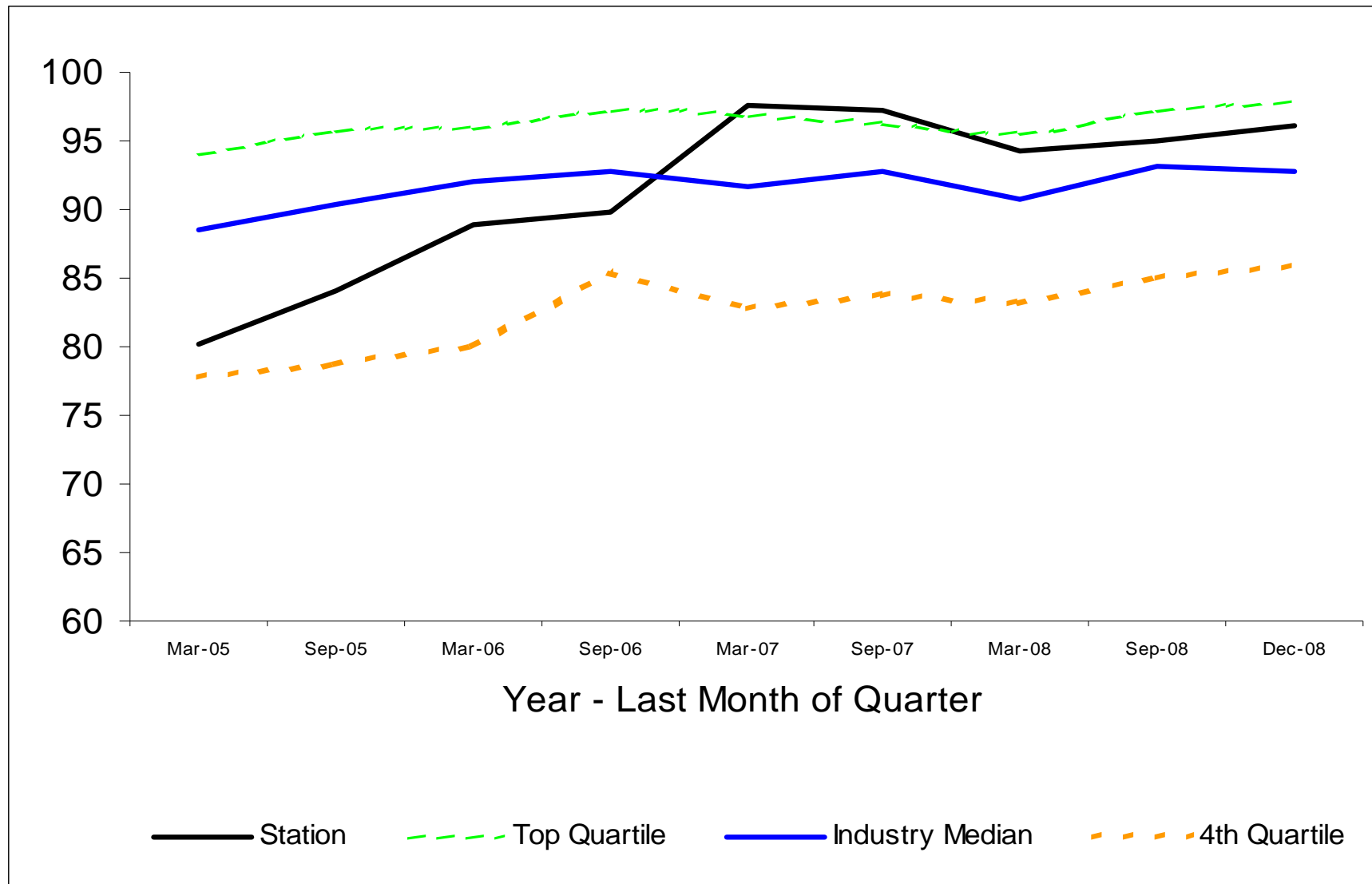


**NRC Safety Performance  
Assessment Meeting  
April 14, 2009**

**2008**

Continued Safe and Reliable Operations  
Continued Emphasis on Fundamentals  
Excellence in Security Performance

# Performance Indicator Index



# 2009 Key Initiatives

---



Industrial Safety

Human Performance

Safe and Reliable Operations

Long Term Equipment Reliability

Environmental Excellence



## Public Meeting Sign-In Sheet

[illegible]





## Public Meeting Sign-In Sheet

Name	Organization (if applicable)	Would you like to ask a question at the end?	
Jim Hobbs	Exelon Reg Assurance	YES	<input checked="" type="radio"/> NO
Alisa H-Daniels	Exelon-Govt Affairs	YES	<input checked="" type="radio"/> NO
Debra Archer	Exelon Comms	YES	<input checked="" type="radio"/> NO
Tom Wassong	Exelon	YES	<input checked="" type="radio"/> NO
Barbara Baldwin	Public	YES	NO
(2) MICHAEL GIFFEN	MD. DEPT. of ENVIRONMENT	YES	NO
Andy Rosebrook	NRC	YES	<input checked="" type="radio"/> NO
David Crist	Hanford County Emergency	YES	NO
	Center - Operations	YES	NO
		YES	NO
		YES	NO
		YES	NO
		YES	NO
		YES	NO
		YES	NO
		YES	NO
		YES	NO
		YES	NO
		YES	NO
		YES	NO
		YES	NO
		YES	NO
		YES	NO
		YES	NO