

J
NORTH

J'
SOUTH

Elevation Above
Sea Level

Elevation Above
Sea Level

3,950

3,950

3,700

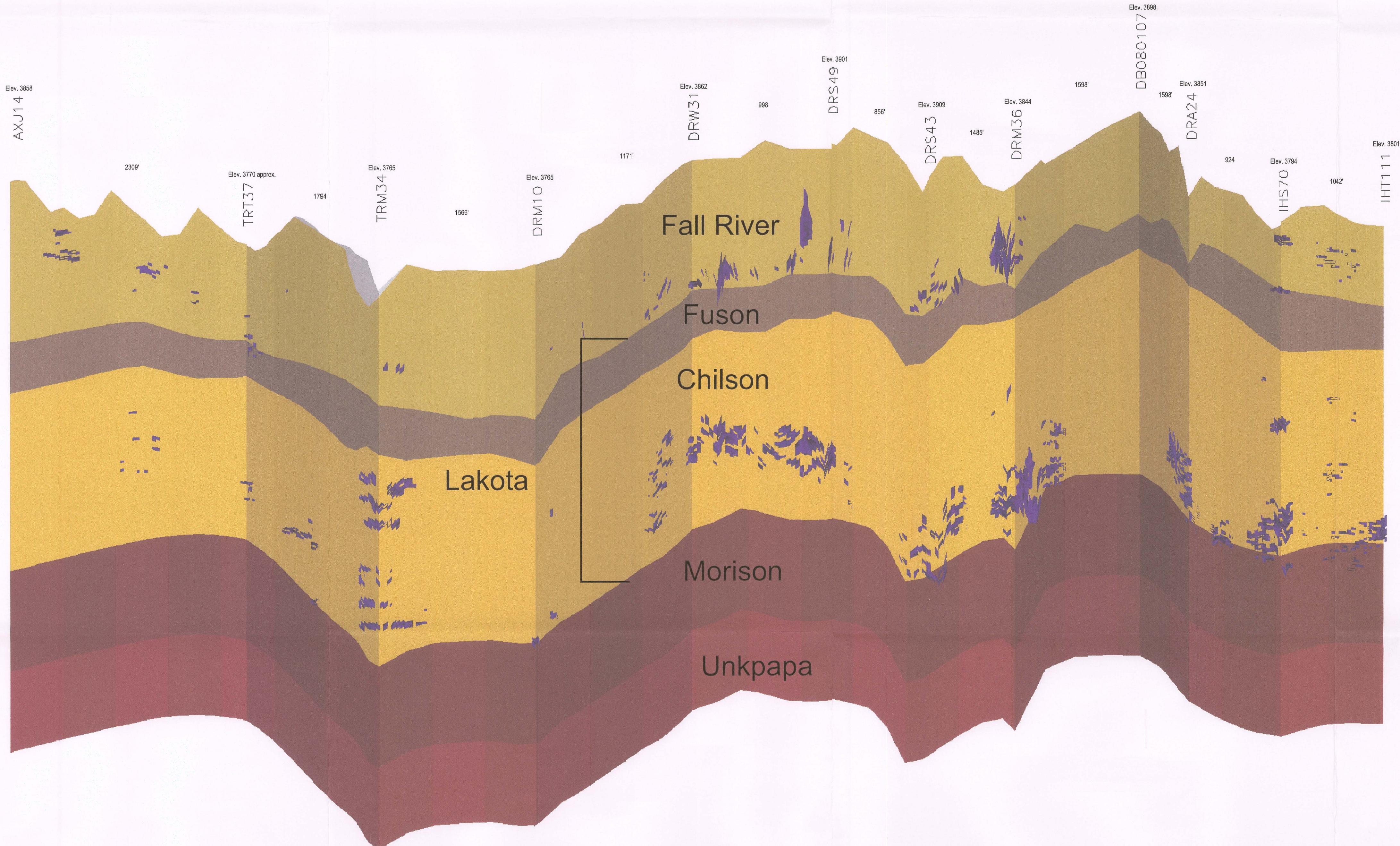
3,700

3,450

3,450

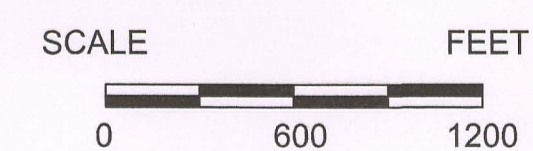
3,200

3,200



vertical exaggeration = 10X

Uranium Ore 0.02%
Grade Cutoff



D-15

CONSULTANT		CONFIDENTIAL NOT for Reproduction or Distribution Subject to Revision		 POWERTECH (USA) INC. PLATE 3.3-14 Ore Cross Section J-J' Fall River & Custer Counties		
REF		REVISIONS				
CHECK SCALES		#	DRAWN	CHECKED	APPROVED	DATE
If this bar does not measure 1 inch this map is not at its original scale						
PLOT DATE		11-Nov-2008		DATE		11-Nov-2008
DRAWN		RC		CHECKED		
SCALE		As Noted		FILENAME		c:\powertech\usouth dakota\dewey burdock\autocad\2008\sections 10-15-2008\Fxsec j-j' ore 11-11-08.dwg
Arch D 24" x 36"				PROJECT		Dewey-Burdock Project
				COORDS		
						1 of 1