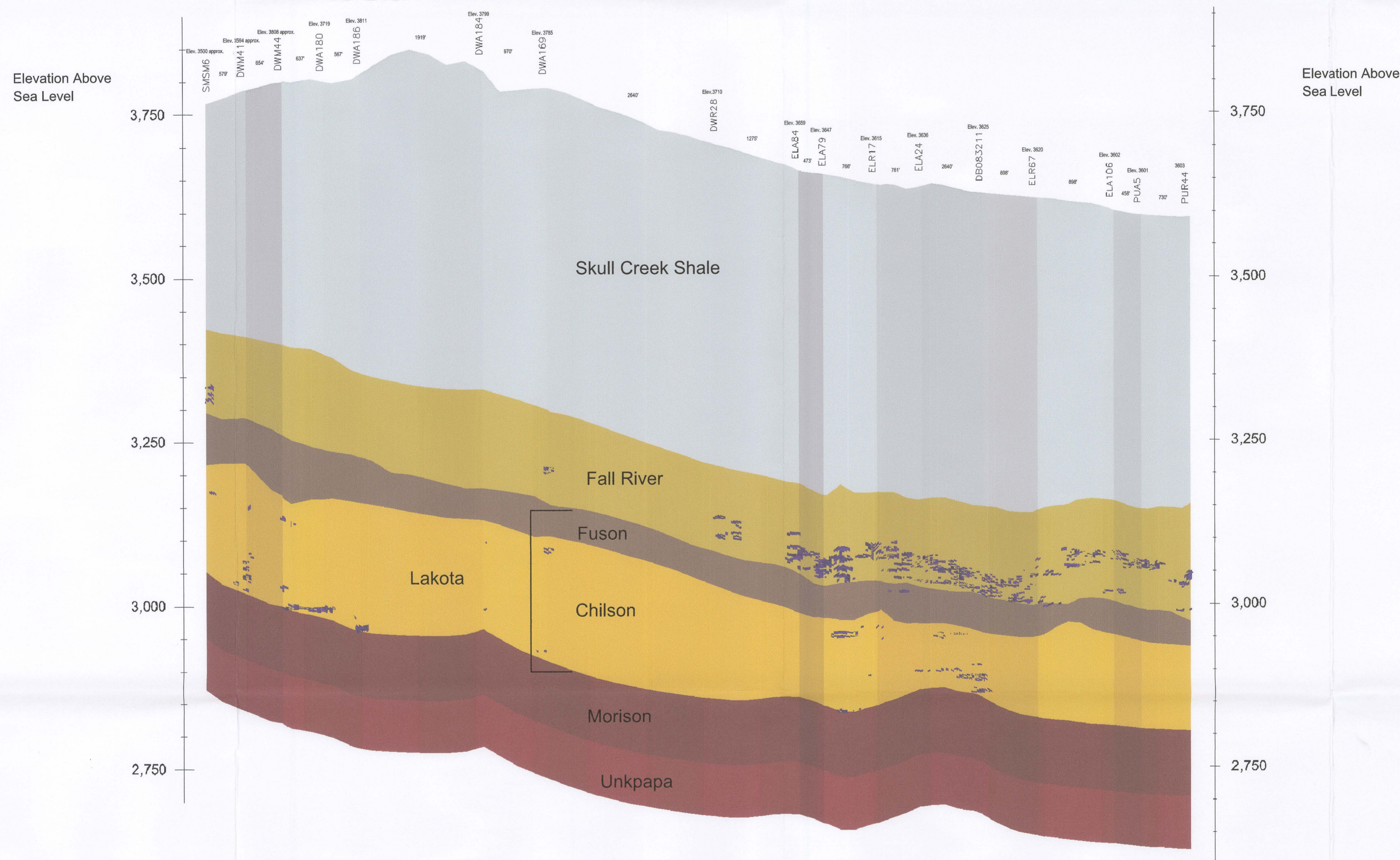


F  
NORTHEAST

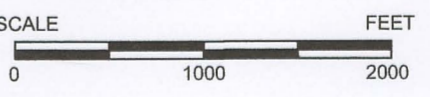
F'  
SOUTHWEST



vertical exaggeration = 10X

D-13

Uranium Ore 0.02% Grade Cutoff



CONSULTANT	<b>CONFIDENTIAL</b> <b>NOT for Reproduction or Distribution</b> <b>Subject to Revision</b>				 <b>POWERTECH (USA) INC.</b> <b>PLATE 3.3-12</b> <b>Ore Cross Section F-F'</b> <b>Fall River County</b>
	REVISIONS				
	#	DRAWN	CHECKED	APPROVED DATE	
REP	CHECK SCALES <small>If this bar does not measure 1 inch this map is not at its original scale</small>			PLOT DATE: 12-Nov-2008 DATE: 10-Nov-2008 PROJECT: Dewey-Burdock Project COORDS:	
Arch D	24" x 36"	SCALE: As Noted	FILENAME: c:\powertech\south dakota\dewey burdock\autocad\2008\sections 10-15-2008\F-F' section F-F' ore 11-12-08.dwg	1 of 1	