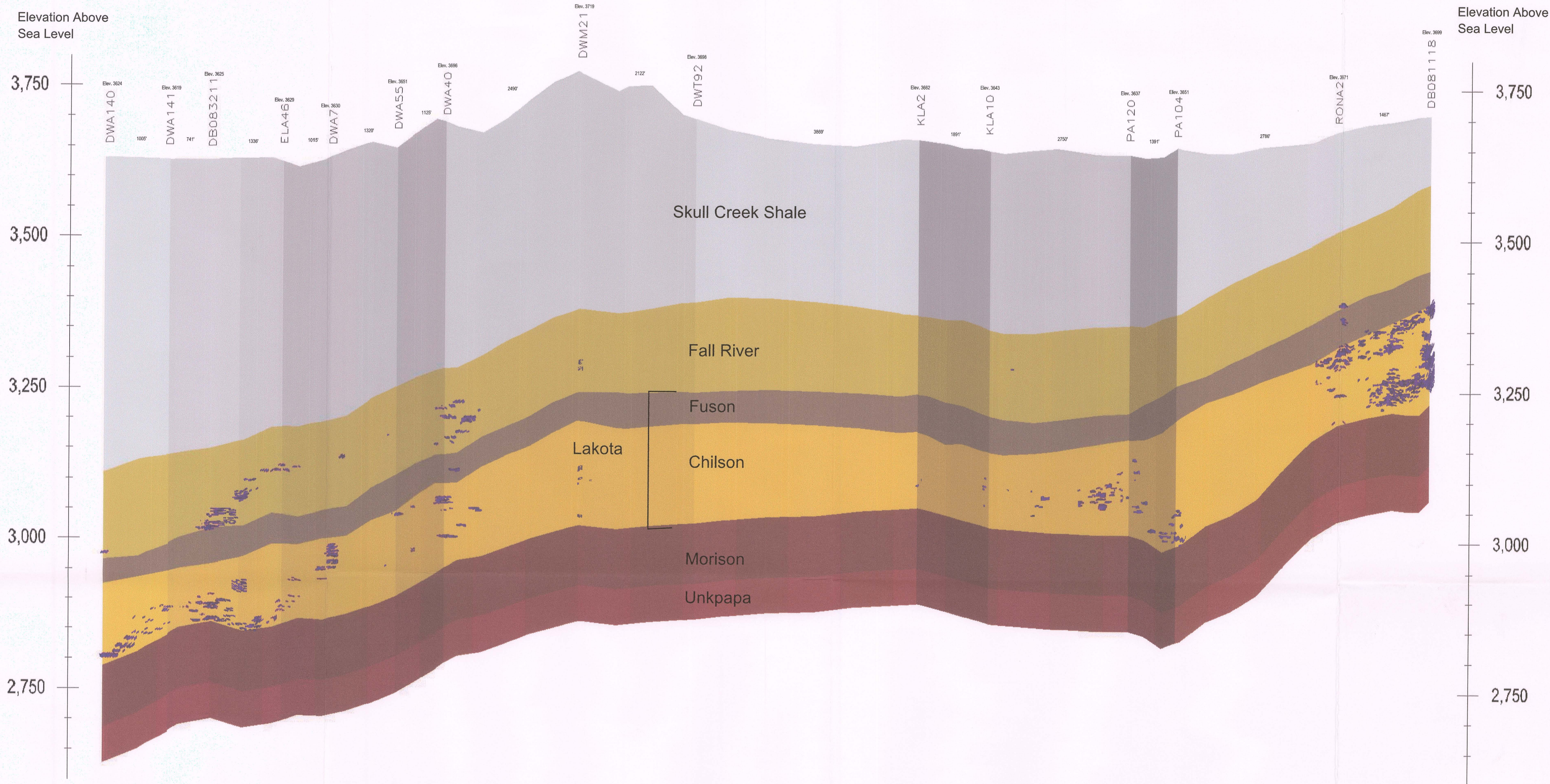


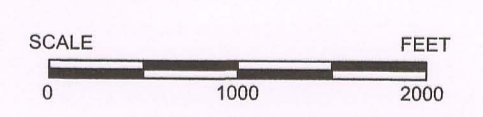
H
NORTHEAST

H'''
SOUTHWEST



vertical exaggeration = 10X

Uranium Ore 0.02%
Grade Cutoff



CONSULTANT	REVISIONS				PROJECT Dewey-Burdock Project
	#	DRAWN	CHECKED	APPROVED	
REF					
CHECK SCALES	PLOT DATE	11-Nov-2008	DATE	11-Nov-2008	COORDS
SCALE	Not Noted				
FILENAME	c:\powertech\south dakota\dewey burdock\autocad\2008\sections 10-15-2008\h-h'''\xsec h-h'''\ ore11-11-08.dwg				1 of 1

PowerTech (USA) Inc.
D-16
PLATE 2.6-13
Ore Cross Section H-H'''
Fall River & Custer Counties