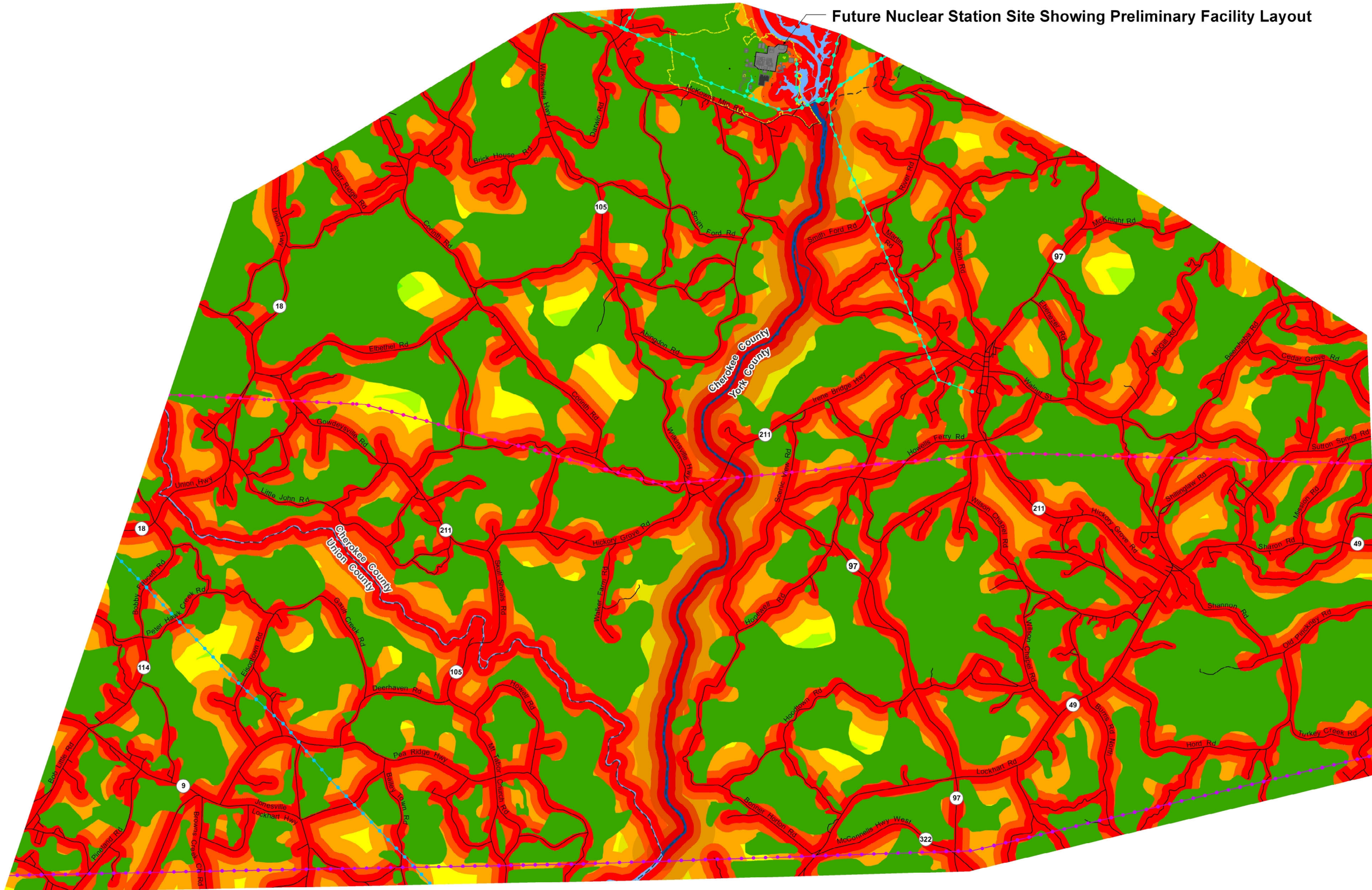


Future Nuclear Station Site Showing Preliminary Facility Layout

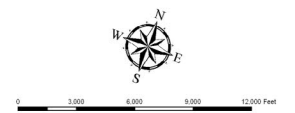


NOT DRAWN TO SCALE

Legend

- 44 kV Transmission Line
- 100 kV Transmission Line
- 230 kV Transmission Line
- 525 kV Transmission Line
- County Line
- Public Road
- River
- Scenic River
- William S. Lee III Nuclear Station Property
- Plant Infrastructure (Preliminary Layout)
- 230 kV / 525 kV Switchyard (Preliminary Layout)
- Visible (0 - 1/8 Mile of a Public Road or Navigable Water)
- Visible (0 - 1/8 Mile of a Scenic Waterway)
- Visible (1/8 - 1/4 Mile of a Public Road or Navigable Water)
- Visible (1/8 - 1/4 Mile of a Scenic Waterway)
- Visible (1/4 - 1/2 Mile of a Public Road or Navigable Water)
- Visible (1/4 - 1/2 Mile of a Scenic Waterway)
- Visible (1/2 - 3/4 Mile of a Public Road or Navigable Water)
- Visible (1/2 - 3/4 Mile of a Scenic Waterway)
- Visible (3/4 - 1 Mile of a Public Road or Navigable Water)
- Visible (1 - 1 1/4 Mile of a Public Road or Navigable Water)
- Not Visible from a Public Road, Navigable Water or Scenic Waterway

Note: This map is for planning purposes only. It does not contain survey information and no attempt should be made to represent any part of this drawing as such.



Source: Field Reconnaissance

Public Visibility

WILLIAM STATES LEE III
NUCLEAR STATION UNITS 1 & 2

Application of Public Visibility Factors
to the Siting Study Area

FIGURE 9.4-7 Rev 0