

# Atlantic Subtropical Anticyclone Seasonality

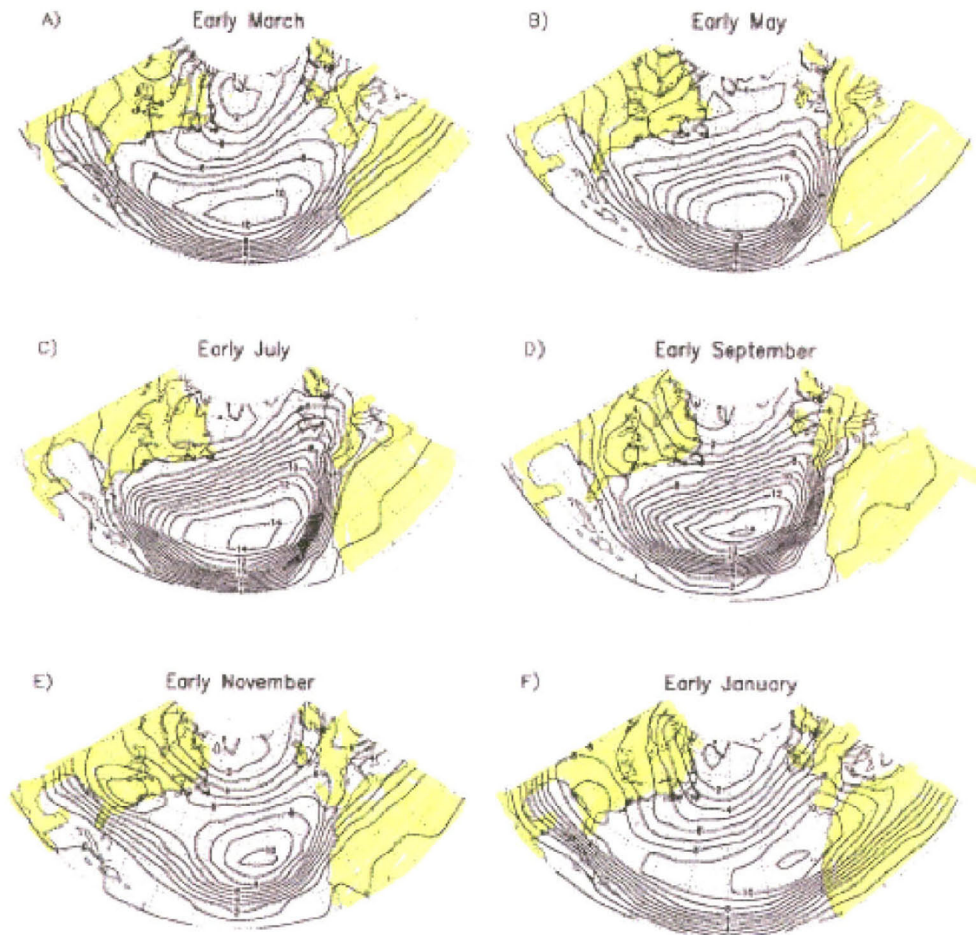


FIG. 2. Average number of days with sea level pressure at 1020 mb in the first half of (a) March, (b) May, (c) July, (d) September, (e) November, and (f) January.

Reference: The North Atlantic Subtropical Anticyclone, Robert E. Davis, Bruce P. Hayden, David A. Gay, William L. Phillips, and Gregory V. Jones, *Department of Environmental Sciences, University of Virginia, Charlottesville, Virginia, Journal of Climate*: Vol. 10, No. 4, pp. 728–744, August 22, 1996.

WILLIAM STATES LEE III  
NUCLEAR STATION UNITS 1 & 2

Normal Sea Level Pressure Distribution  
Over North America and the North Atlantic Ocean

FIGURE 2.7-4

Rev 0