

Entergy Power Uprate Project Planning

March 31, 2009

Entergy Power Uprate Projects

- **Introductions**
- **Project Overview / Organization**
- **Licensing Goals**
- **Projected Submittal Schedules**
- **Topics of Interest**
- **Summary**

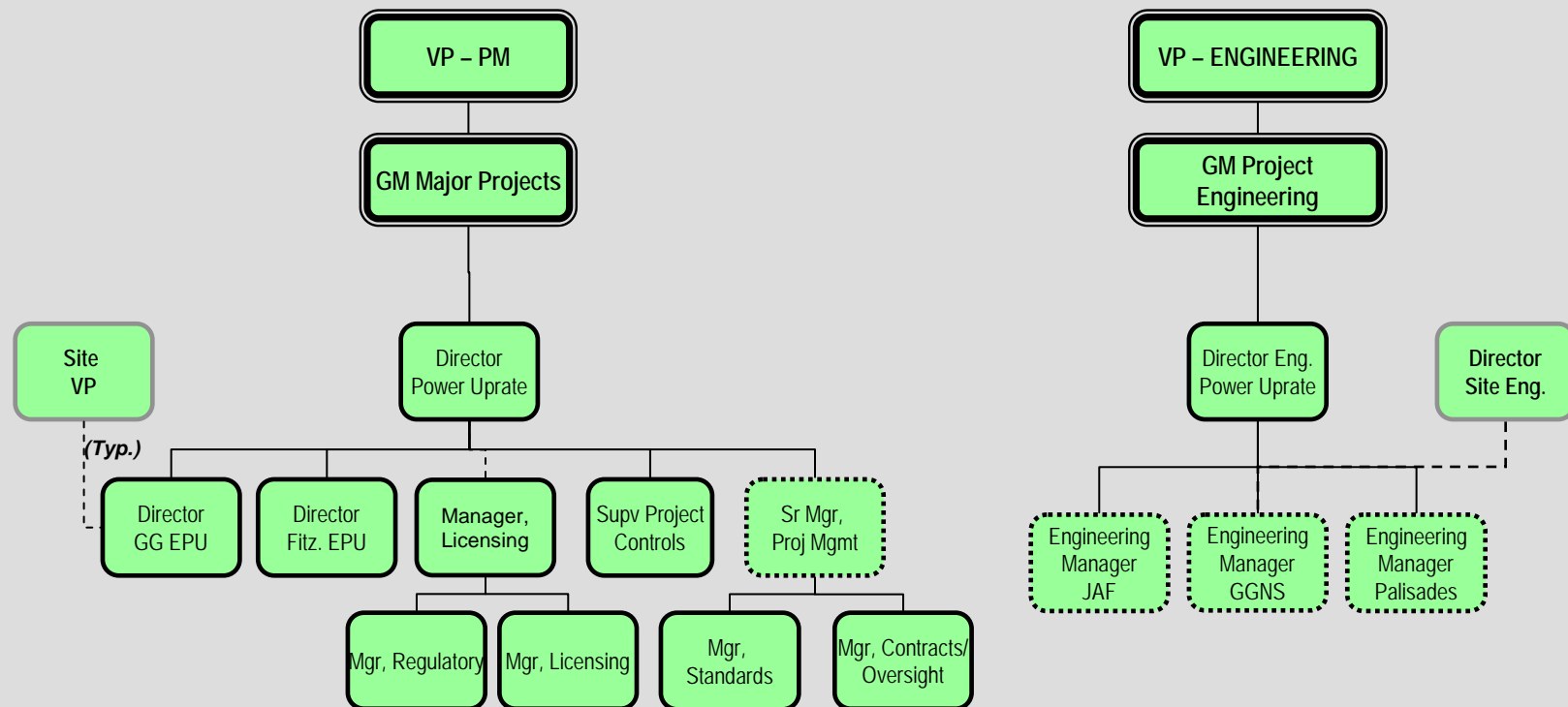
Project Overview

- | | | |
|-------------------------------------|---------------|-------------|
| ● Grand Gulf ¹ | 15% EPU OLTP | Spring 2012 |
| ● James A. FitzPatrick ² | 20% EPU OLTP | Fall 2012 |
| ● Palisades | 3.3% SPU OLTP | Under study |

¹Grand Gulf EPU project has not received final internal approvals and is presented here based on current projections and proposed timing.

²JAF EPU project has not received final internal approvals and is presented here based on current projections and proposed timing.

Organization



Licensing Principles

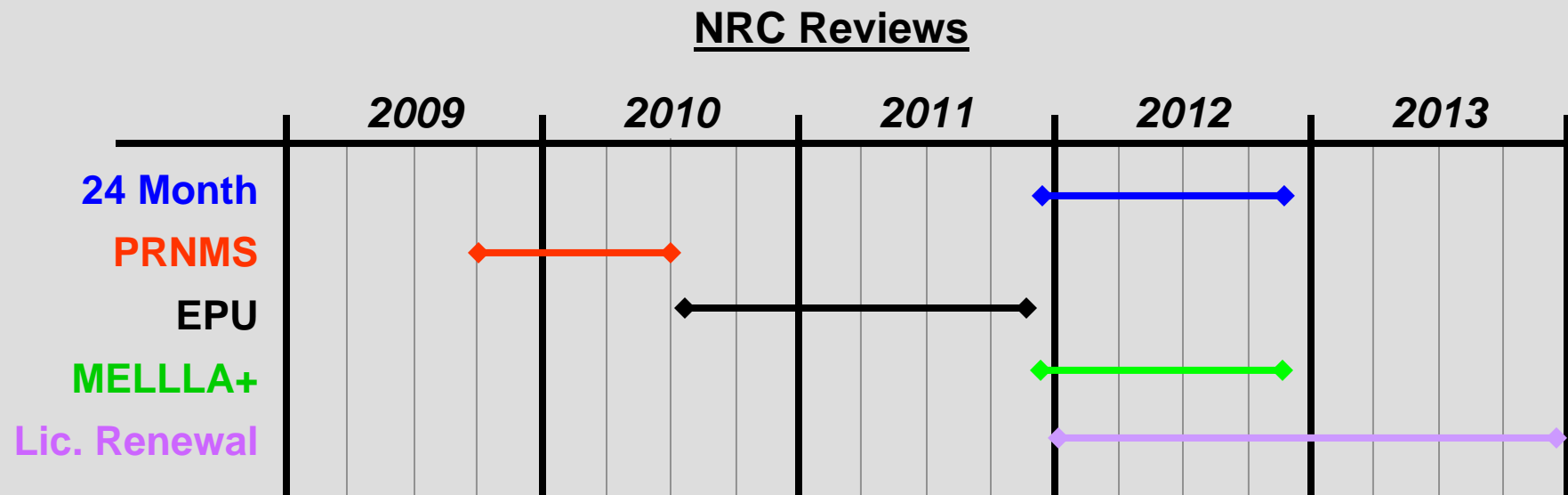
- **NRR Office Instruction LIC-109**
- **NRC Review Standard RS-001**
- **Industry operating experience and lessons from recent submittals**
- **Approved Licensing Topical Reports**
 - NEDC 33004 (CLTR)
 - NEDC 33410 (PRNM LTR)
 - NEDC 32410 (Stability LTR)
 - NEDC 33006 (MELLLA+ LTR)

LAR Summary

	GGNS 15%	JAF 20%
MWe Online	2012	2012
24-Month Cycle	X	current
PRNMS	X	X
Extended Power Uprate	X	X
MELLLA+	X	X
License Renewal	X	current

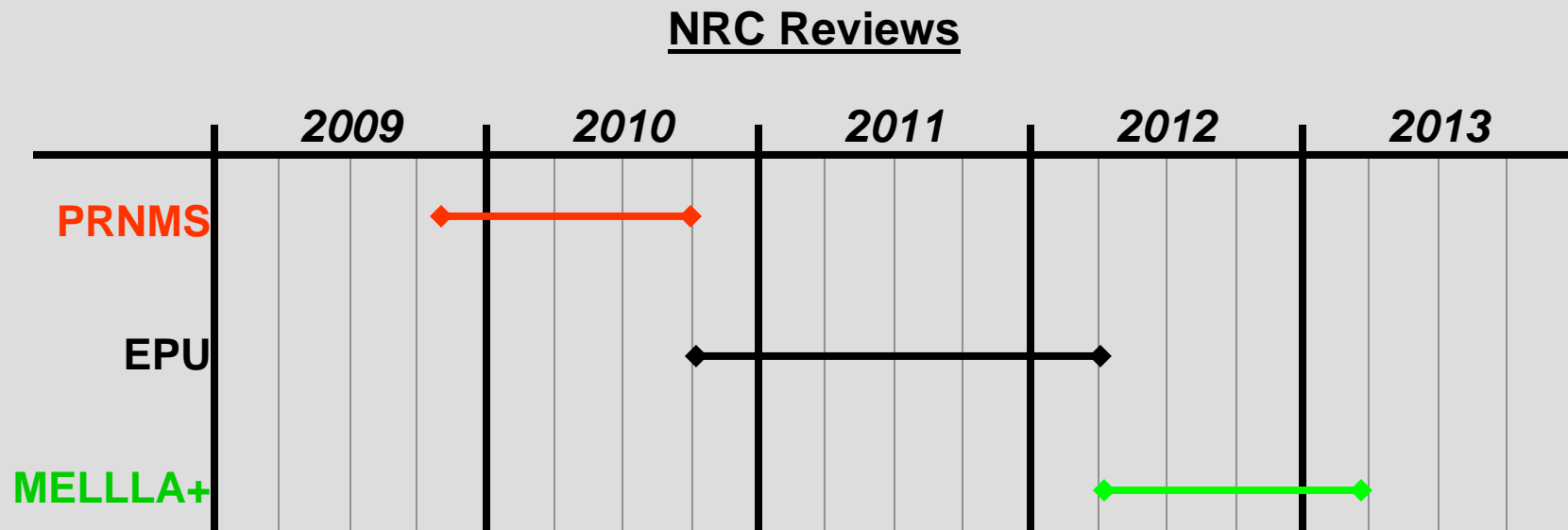
Proposed GGNS Timeline

Submittal	Projected Submittal Date	NRC Review
24 Month	Dec. 2011	12 Months
PRNMS	Oct. 2009	9 Months
EPU	July 2010	16 Months
MELLLA+	Dec. 2011	12 Months



Proposed JAF Timeline

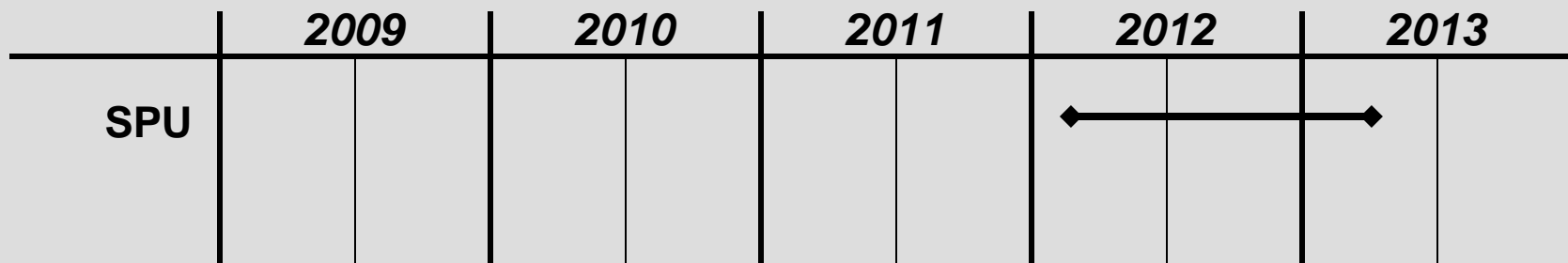
Projected		
<u>Submittal</u>	<u>Submittal Date</u>	<u>NRC Review</u>
PRNMS	Nov. 2009	11 Months
EPU	Oct. 2010	18 Months
MELLLA+	April 2012	12 Months



Proposed Palisades Timeline

<u>Submittal</u>	<u>Projected Submittal Date</u>	<u>NRC Review</u>
Stretch Uprate	Feb. 2012	14 Months

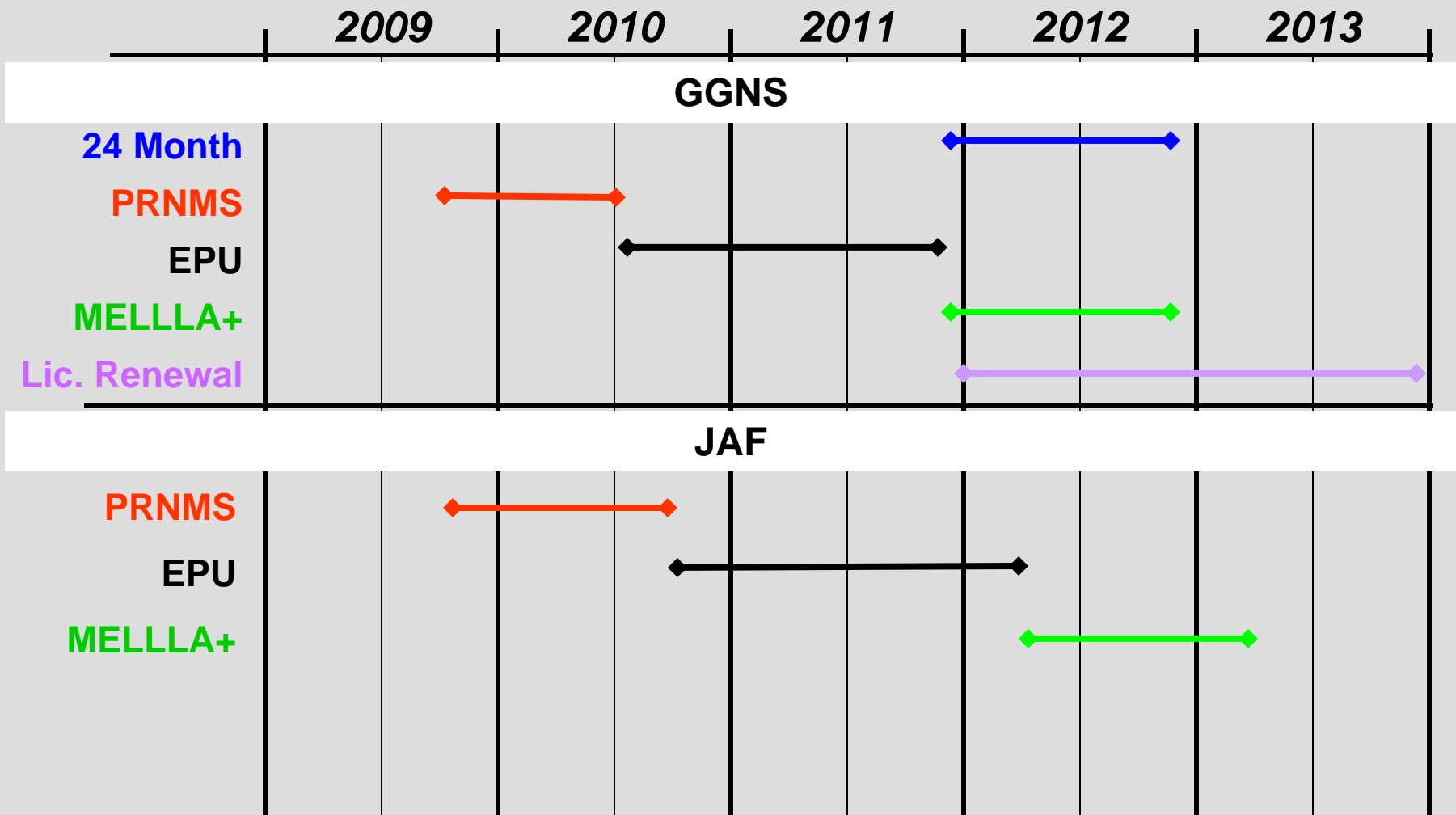
NRC Reviews



Topics of Interest

- **Containment Overpressure Credit – JAF**
 - Credited in current licensing basis
 - EPU analysis consistent with recent BWR EPUs
- **Large Transient Testing**
- **Steam Dryers**
 - Steam line instrumented / acoustic analysis
 - Vermont Yankee experience

LAR Summary



Questions