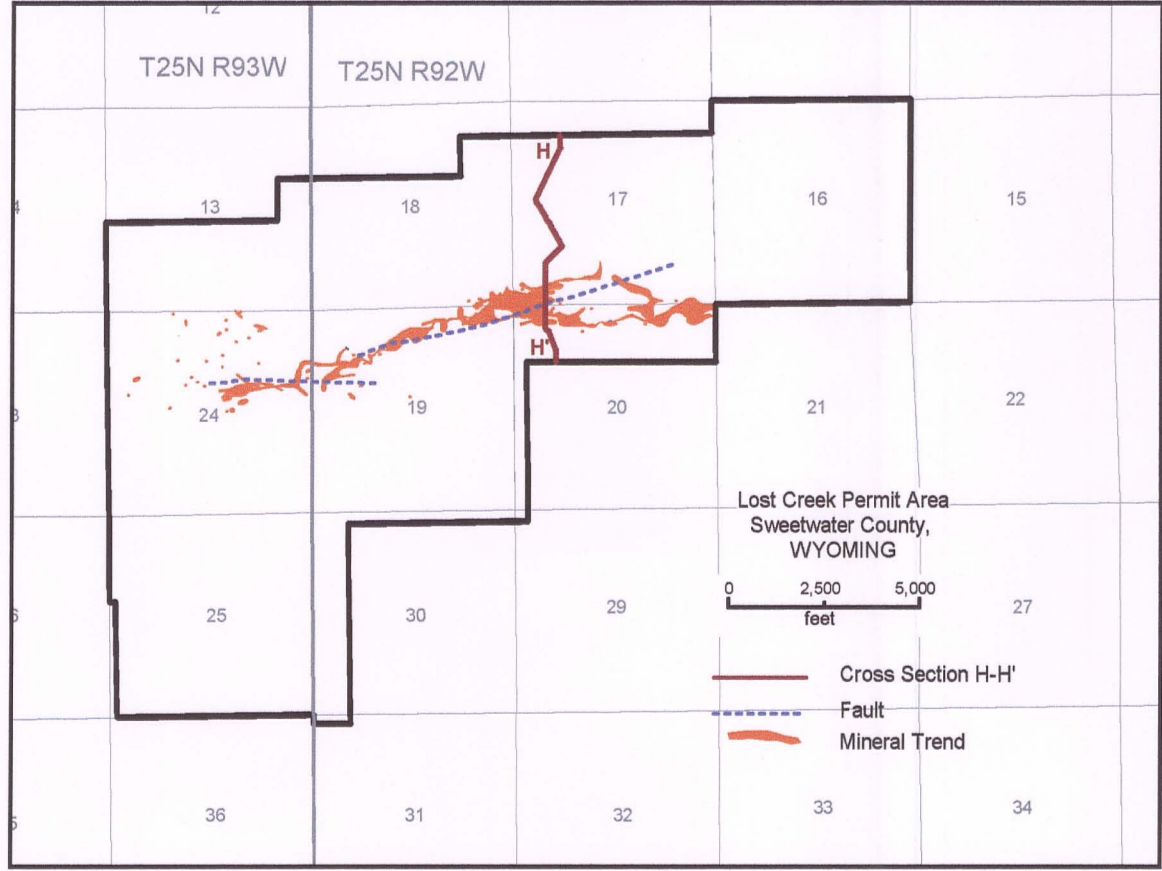
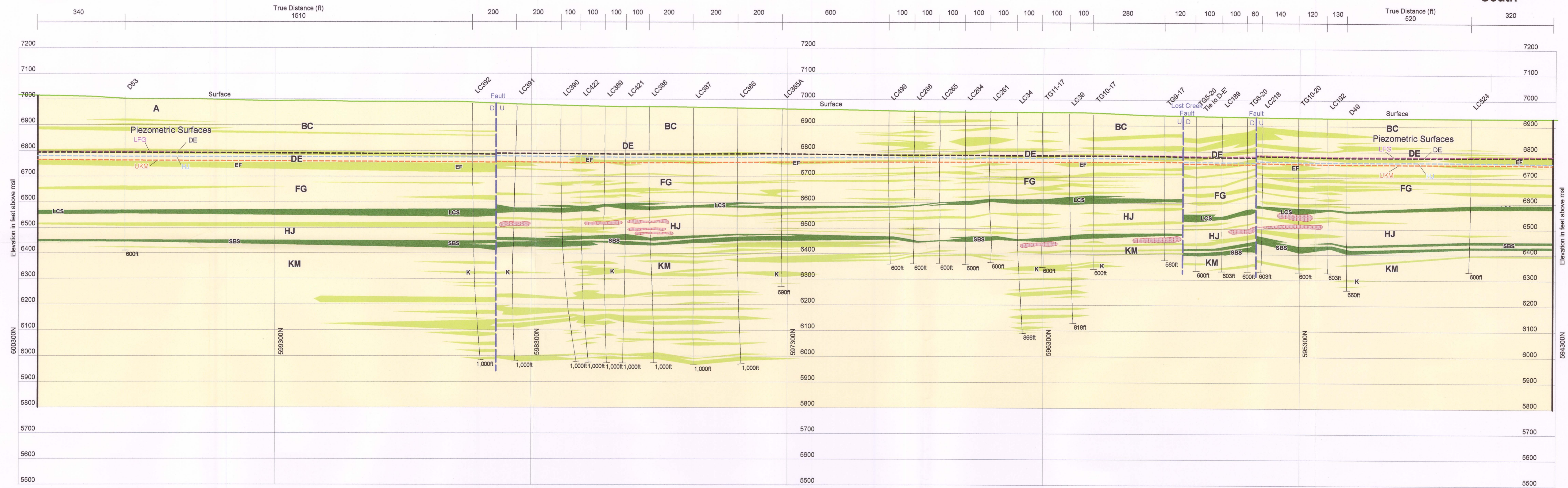


H
North

H'
South



Lost Creek ISR, LLC
Littleton, Colorado, USA

AATA INTERNATIONAL, INC.
Fort Collins, Colorado, USA

Legend
Mineralization Polygons
Aquitard
Sand

Stratigraphic Units
A - A Horizon
BC - BC Horizon
DE - DE Horizon
FG - FG Horizon
LCS - Lost Creek "Shale"
HJ - HJ Horizon
SBS - Sage Brush "Shale"
KM - KM Horizon
K - "Shale"

Cross Section projected onto N-S vertical plane

PLATE 2.6-1g
Cross Section H-H'
Lost Creek Permit Area

Issued For: NRC TR1.0 Drawn By: ML
Issued/Revised: 10.11.07/02.27.09
Drawing No.: NRCTR1.0 PLATE2.6-1b 10.11.07

feet (no vertical exaggeration)

D-06