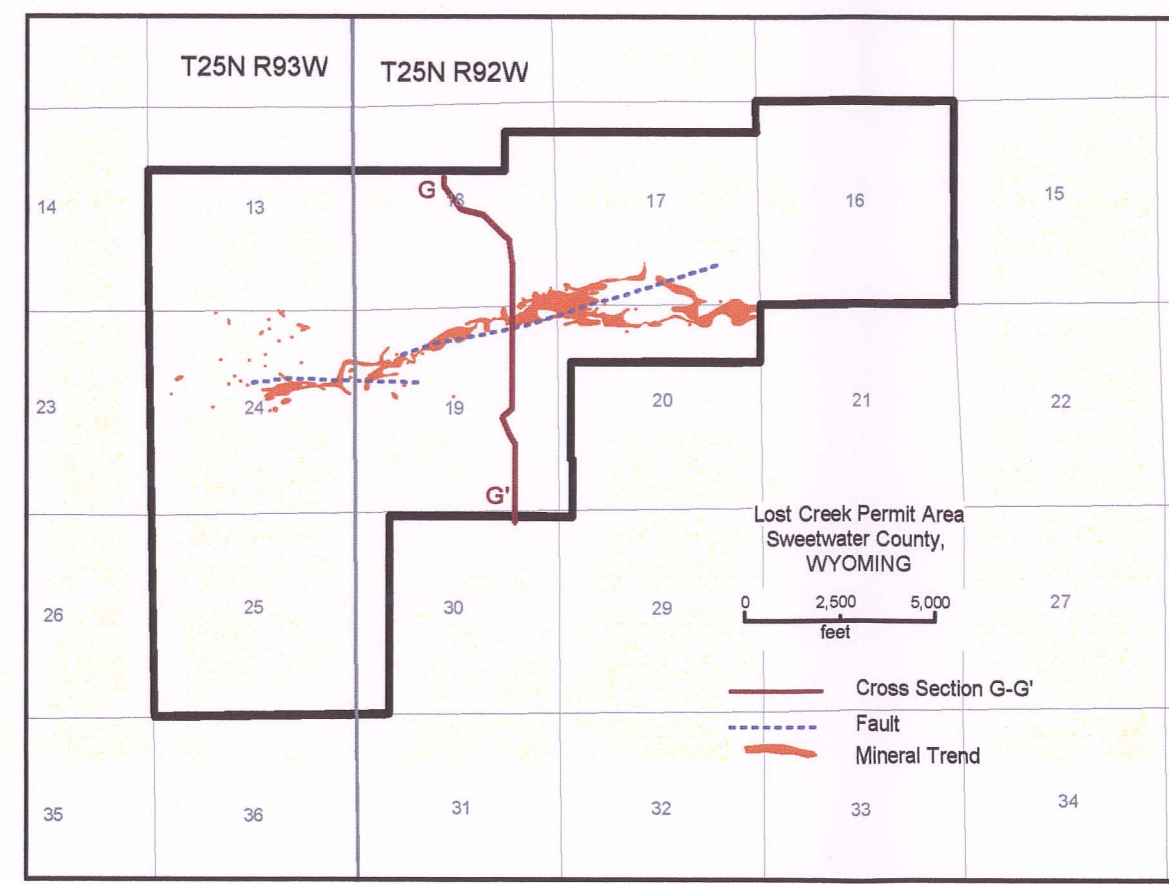
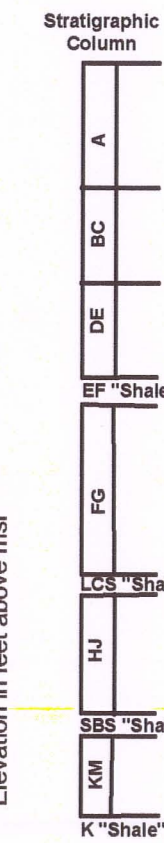
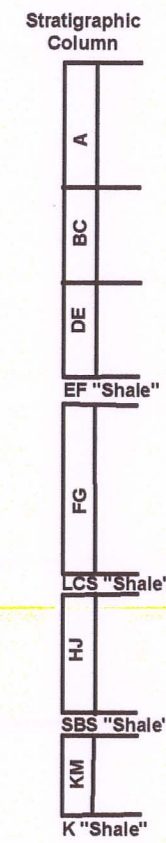
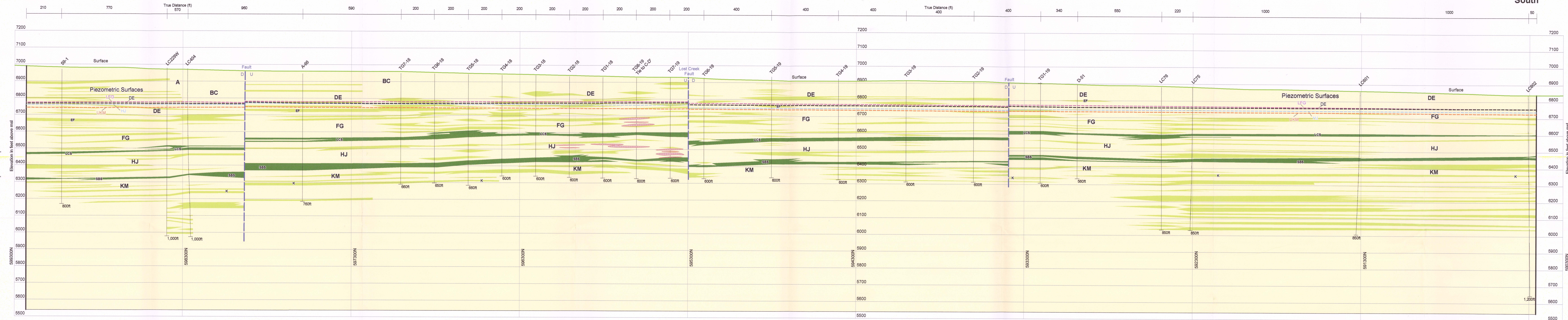


G North

G' South



Lost Creek ISR, LLC  
Lithium, Colorado, USA

AAIA INTERNATIONAL, INC.  
Fort Collins, Colorado, USA

**Legend**

Mineralization Polygons

- Aquifer
- Sand

Stratigraphic Units

- A: A Horizon
- BC: BC Horizon
- DE: DE Horizon
- FG: FG Horizon
- HJ: HJ Horizon
- KM: KM Horizon
- K: K Horizon

Other symbols: Fault, Mineral Trend, Piezometric Surface, Well, Contour

**PLATE 2.6-1f**  
**Cross Section G-G'**  
**Lost Creek Permit Area**

Issued For: NRC TR1.0 Drawn By: ML  
Issued/Revised: 10.11.07/02.27.09  
Drawing No.: NRCTR1.0 PLATE2.6-1b 10.11.07

1" = 1000' (no vertical exaggeration)

D-05