



Admitted: 03/16/2009
 Rejected:

Withdrawn:
 Stricken:

Southern Nuclear Operating Company
 Vogtle Early Site Permit Application
 Part 3 – Environmental Report

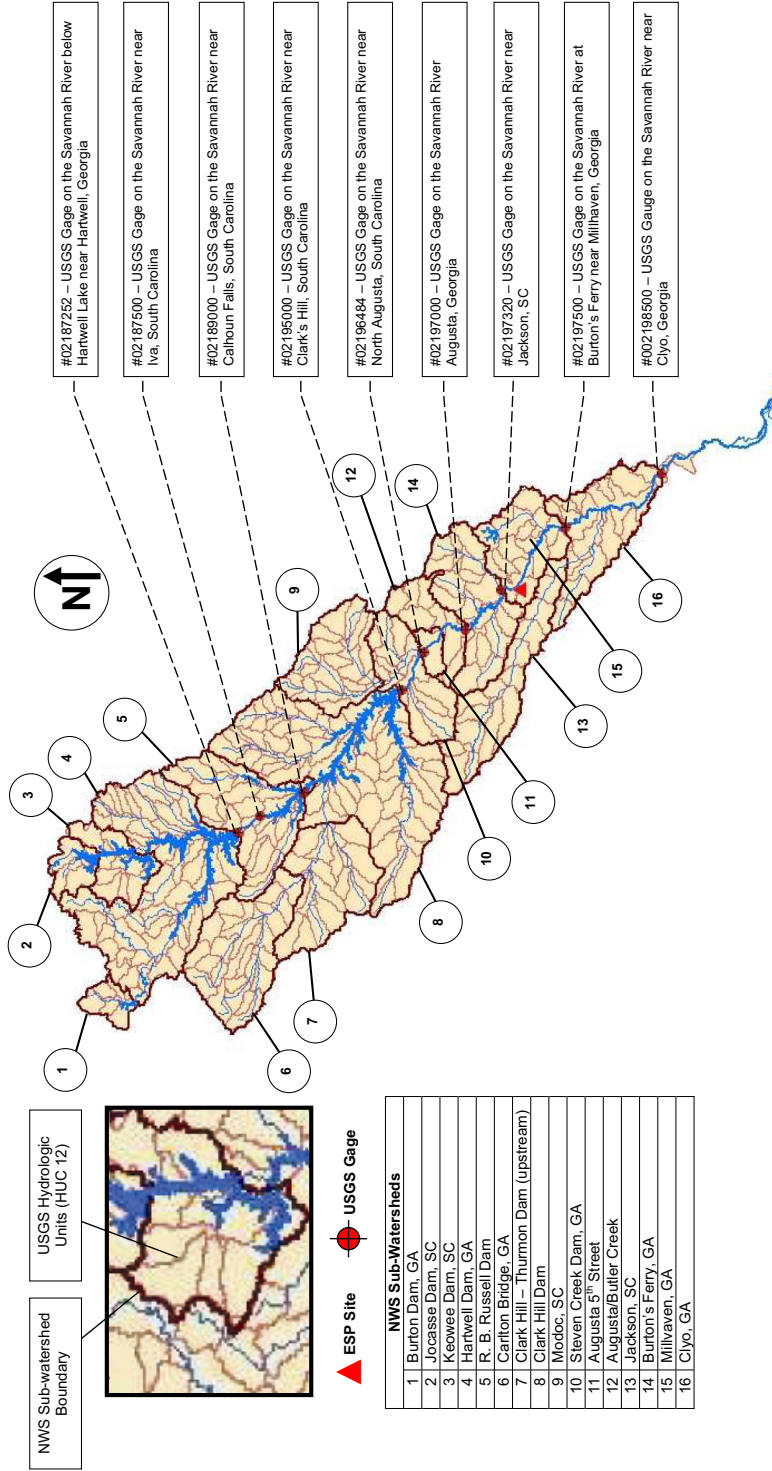


Figure 2.3.1-1 Savannah River Watershed and HUCs (No Scale)

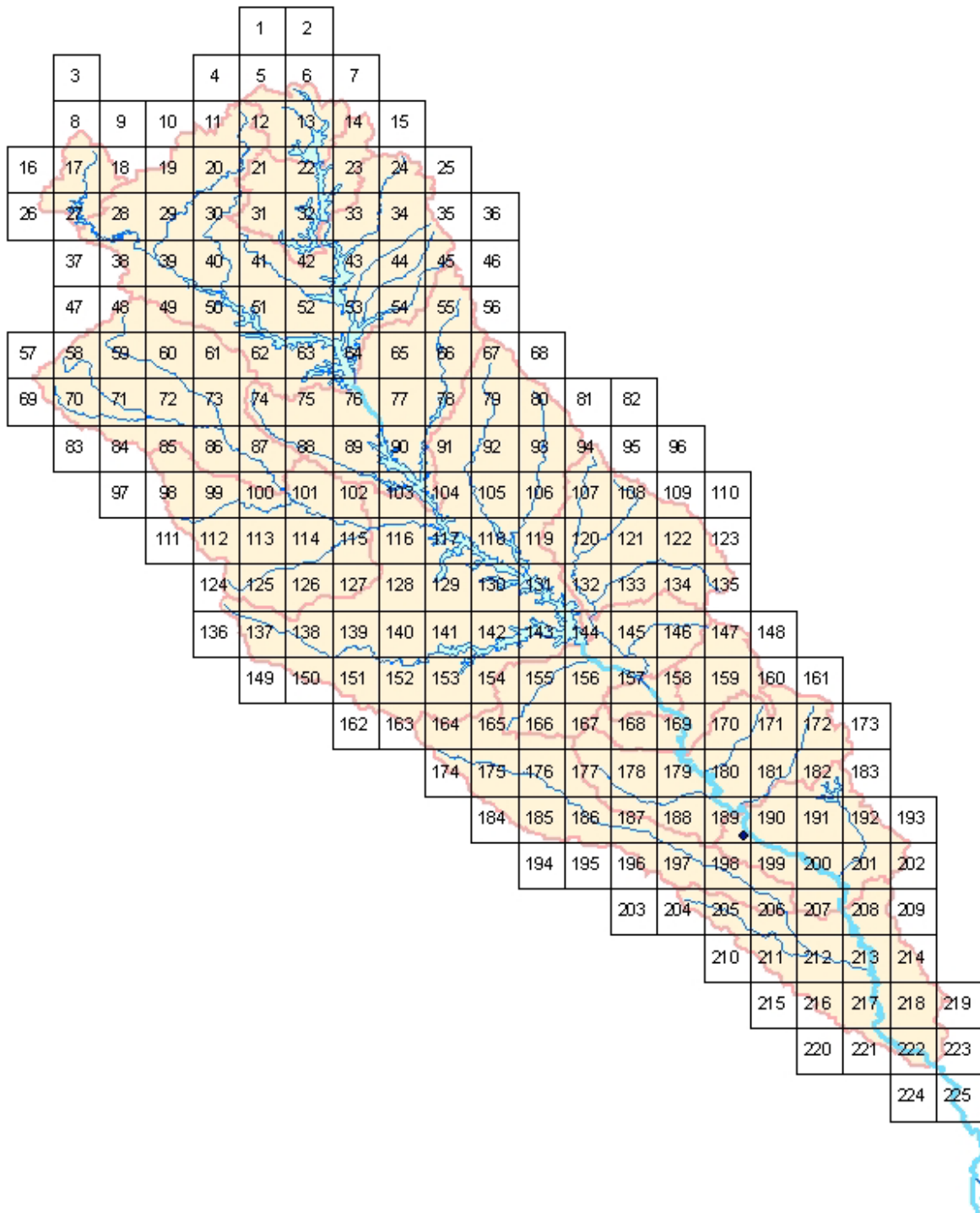


Figure 2.3.1-2 USGS 7.5-Minute Quadrangle Coverage for Savannah River Watershed

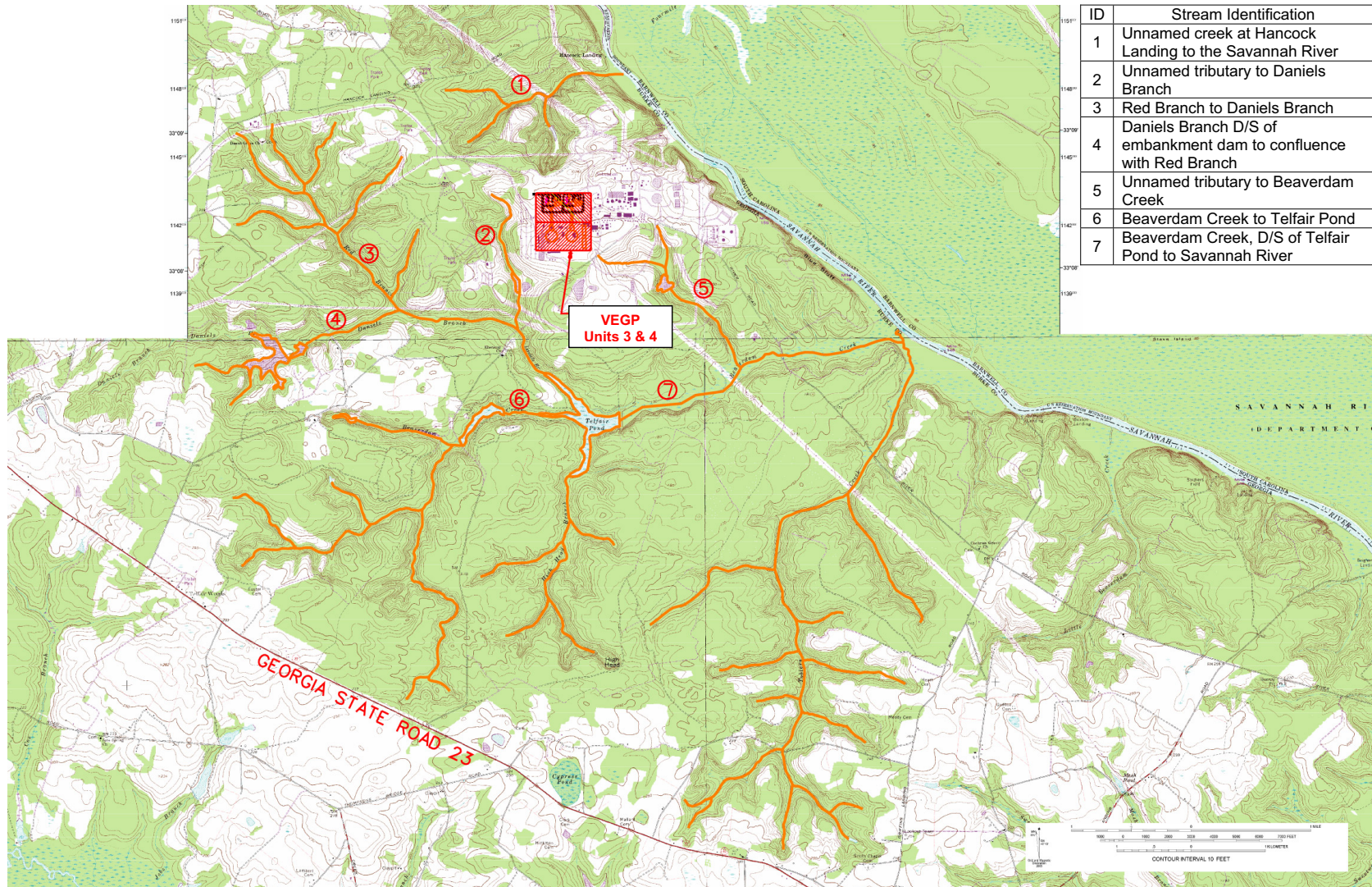


Figure 2.3.1-3 Local Area Drainage Map

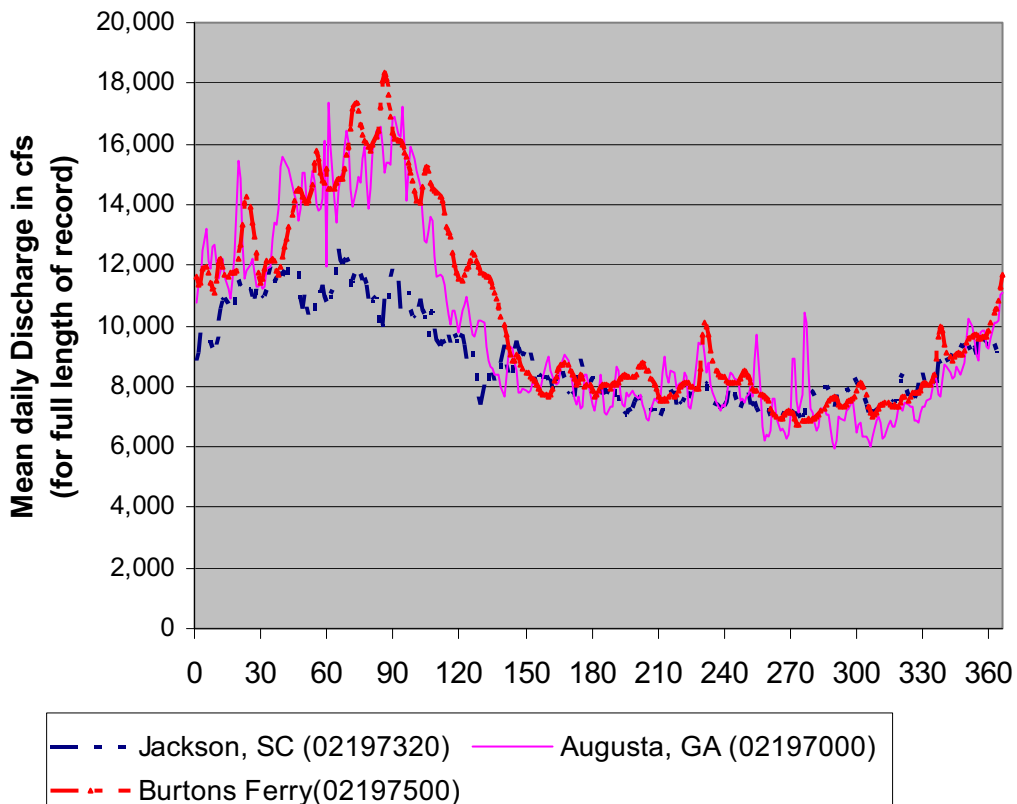


Figure 2.3.1-4 Mean Daily Discharge on the Savannah River at Augusta, Georgia; Jackson, South Carolina; and Burtons Ferry for Entire Period of Record

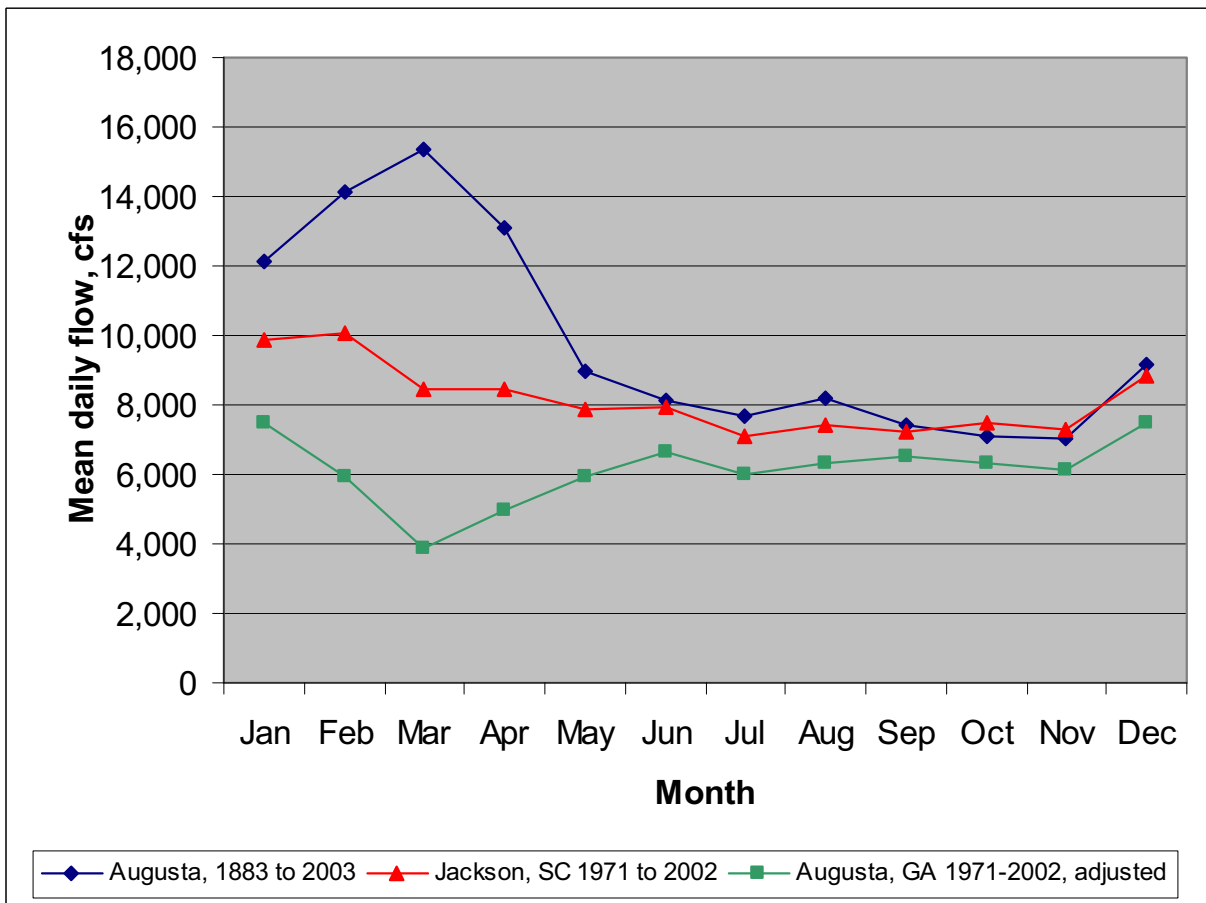


Figure 2.3.1-5 Full-Period and Adjusted Mean Discharges for Each Month on the Savannah River at Augusta, Georgia, and Jackson, South Carolina