

**U.S.NRC**

UNITED STATES NUCLEAR REGULATORY COMMISSION

*Protecting People and the Environment*

# Comanche Peak Nuclear Power Plant, Units 3 and 4 Combined License Application

Granbury Hood County Economic Development Corporation

# Combined License Application Review

- Stephen Monarque, Project Manager
  - Overall Combined License Application Review
  
- Michael Willingham, Project Manager
  - Environmental Review

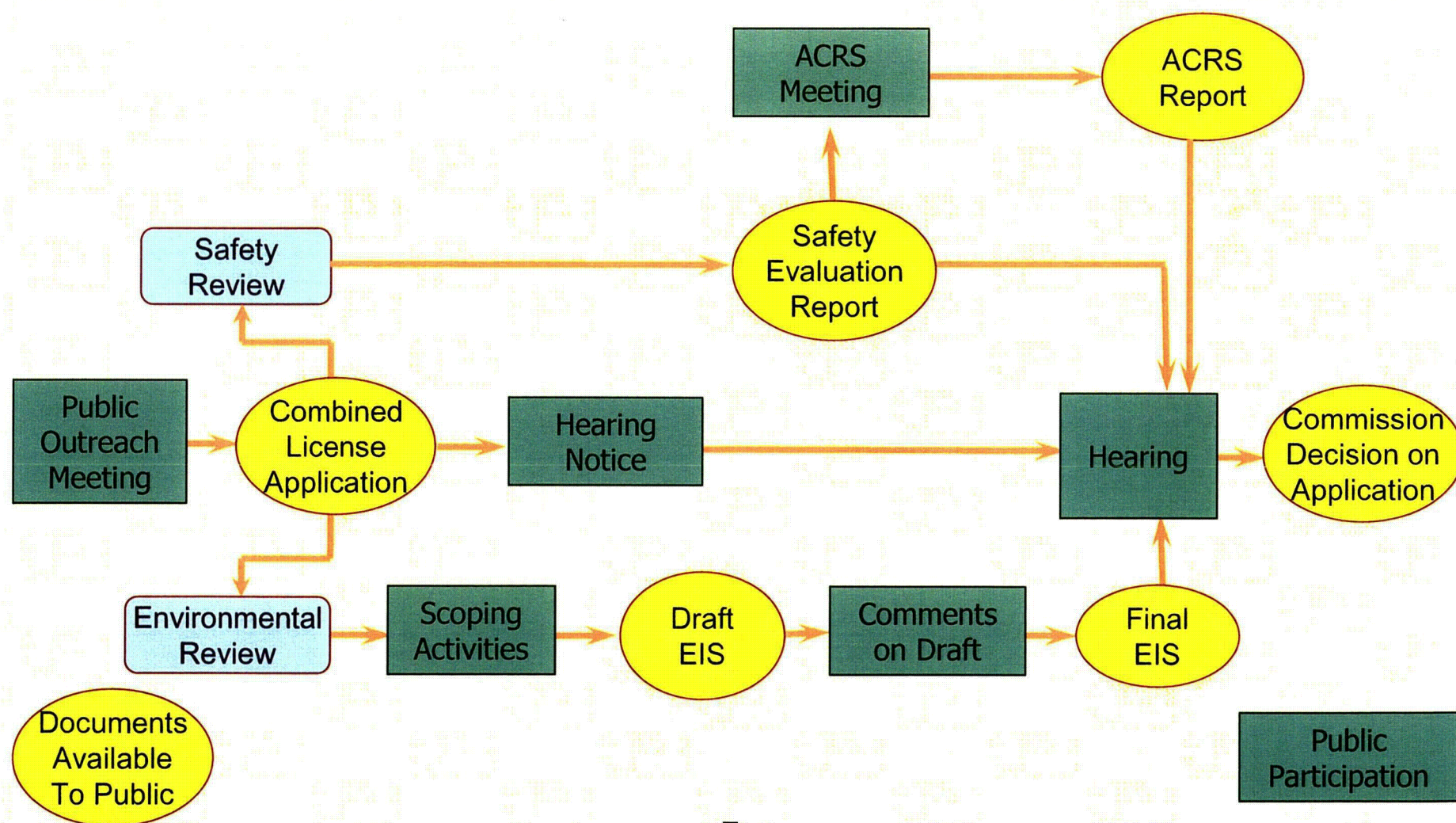
# Purpose of this meeting

- Explain what the NRC does during the review of a combined license application

# Nuclear Regulatory Commission

- ☐ Mission: to protect the public health and safety, promote the common defense and security, and protect the environment
- ☐ Independent Agency
- ☐ Over 30 years experience regulating operating reactors and other civilian uses of nuclear materials

# Combined License Application Review Process



# Safety Review

- Ensure facility will be constructed and operated safely by reviewing:
  - Design of facility
  - Security plan
  - Emergency preparedness (with the Federal Emergency Management Agency)
  - Operator Training
- Clearly document our safety findings

# Comanche Peak COL Application

- Comanche Peak COL Application will reference the Mitsubishi Heavy Industries design for the U.S. Advanced Pressurized Water Reactor
  - US-APWR design currently under NRC review
  
- NRC will not make decision on COL prior to documenting its safety findings for the US-APWR

# Opportunities for Public Participation

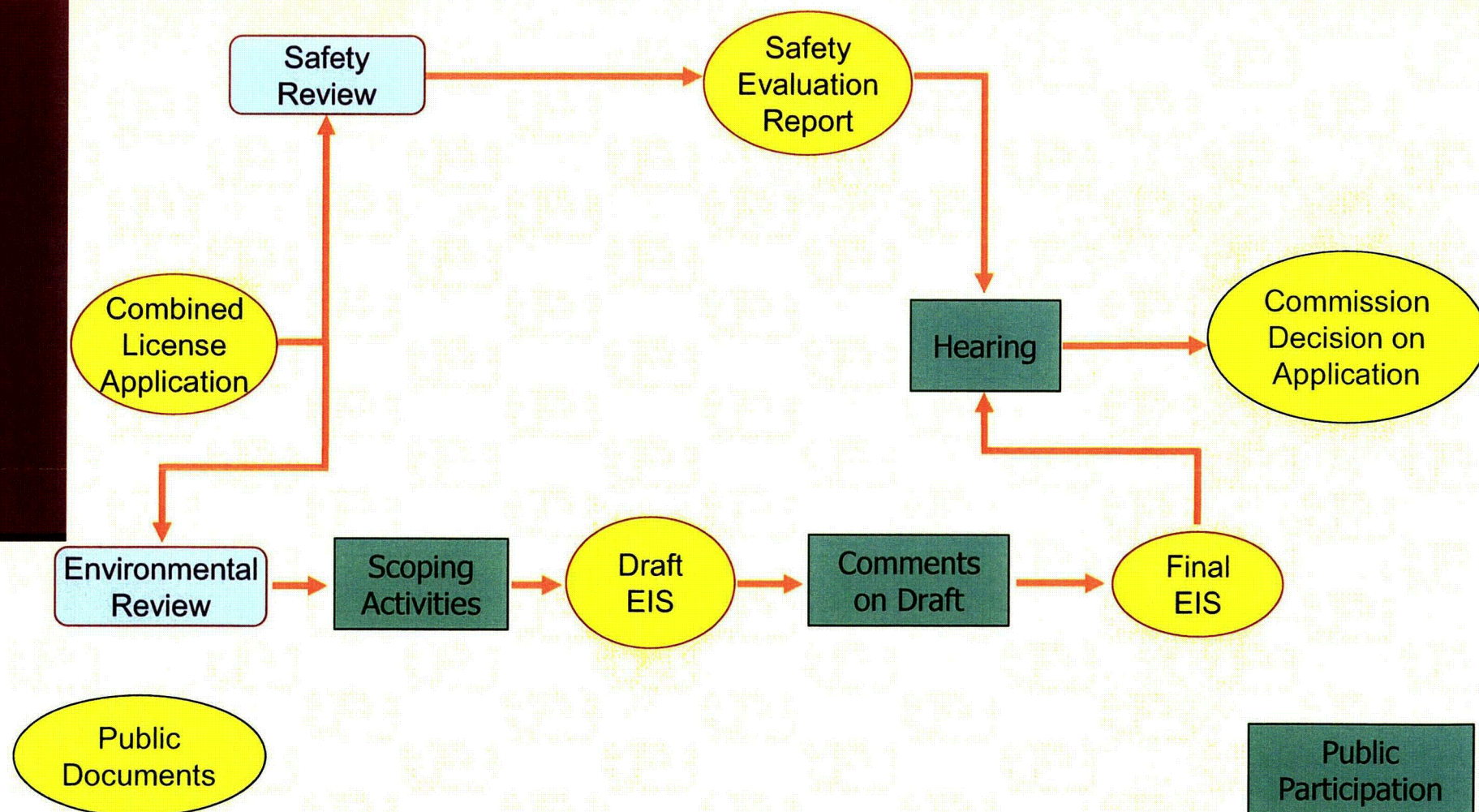
- Information available to public at  
[www.nrc.gov/reactors/new-reactors/col/comanche-peak.html](http://www.nrc.gov/reactors/new-reactors/col/comanche-peak.html)
- Meetings between the NRC and the applicant
- Comment on environmental review
- Participate in Advisory Committee on Reactor Safeguards meetings
- Participate in the hearing process



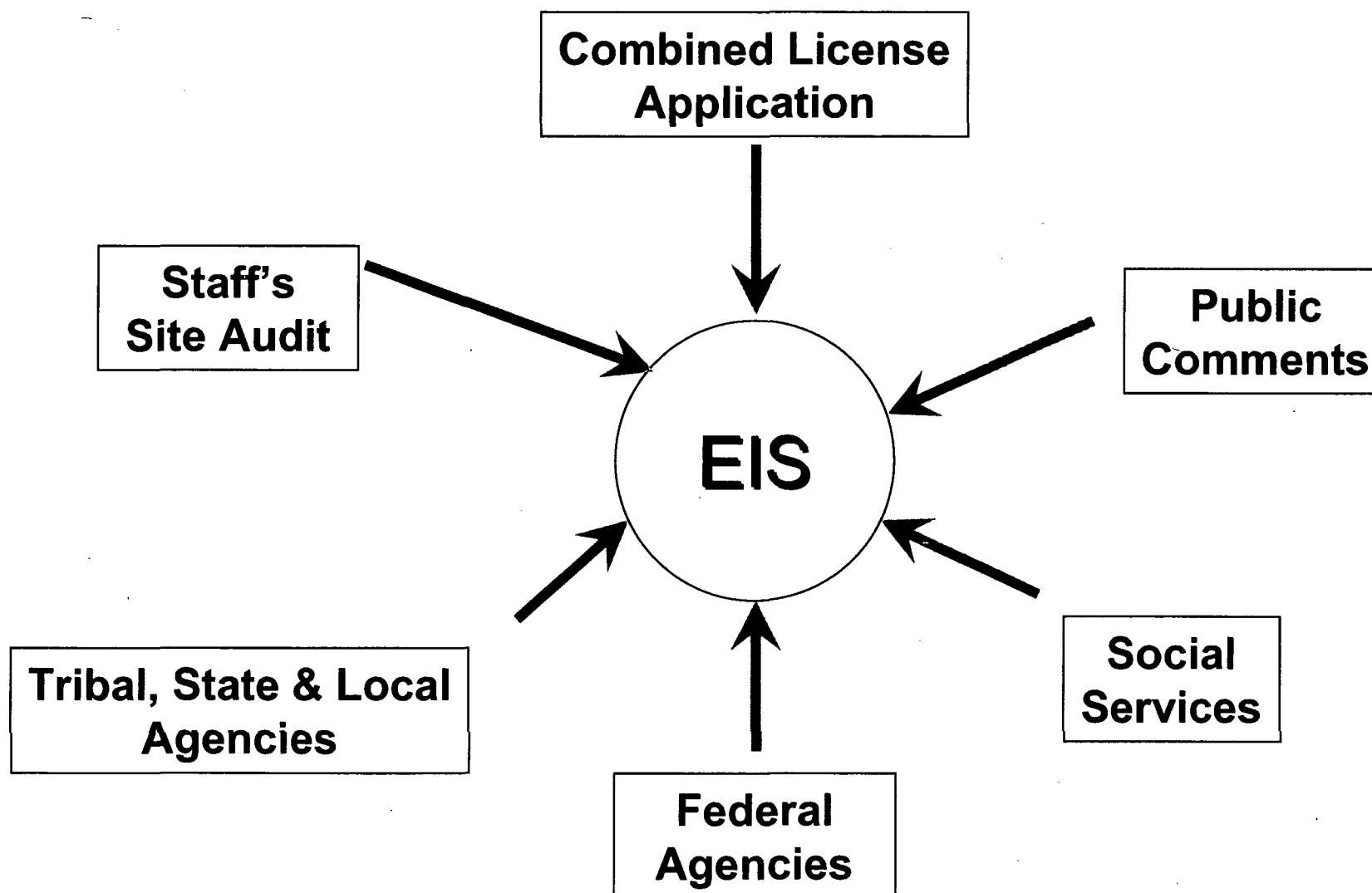
# **National Environmental Policy Act (NEPA)**

- NEPA requires Federal agencies to use a systematic approach to consider environmental impacts
- An Environmental Impact Statement (EIS) is required for major Federal actions that may significantly affect the quality of the human environment
- Granting a combined license is considered a major Federal action

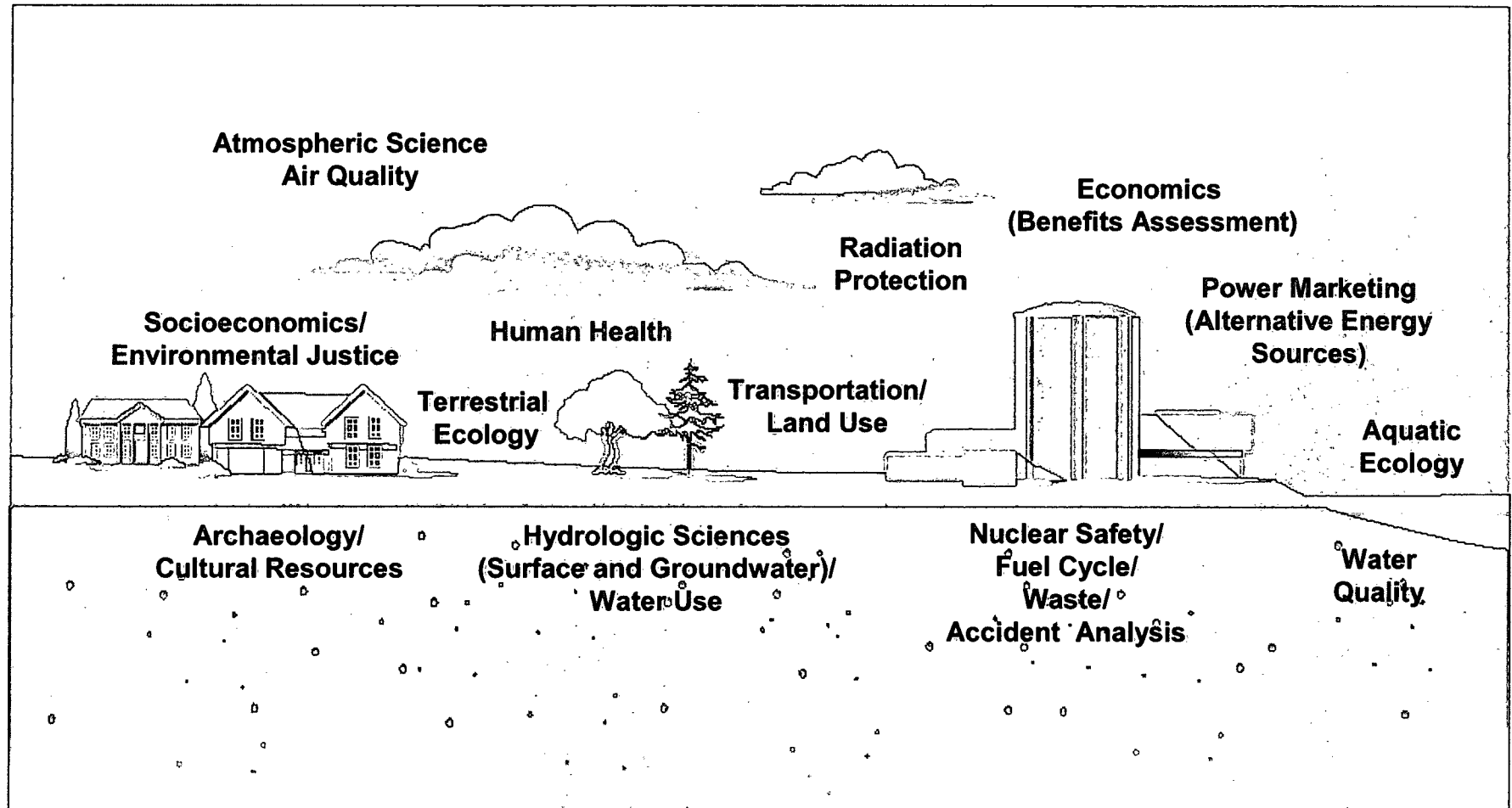
# Combined License Application Environmental Review Process



# Information Gathering



# Environmental Review Areas



## If the License is issued....

- ❑ The NRC will authorize the licensee to start construction of a nuclear power plant, to load fuel, and (eventually) to operate the completed plant, if specified conditions are met.
- ❑ NRC staff will inspect nuclear safety–related construction activities.
- ❑ NRC will verify that, prior to operation, the plant is built as designed.