

SCALE: (IN FEET)  
 0 330 660 990 1320



MAKE-UP POND B

HOLD-UP POND A

MAKE-UP POND A

A

A'

B'

C'

BROAD RIVER

BROAD RIVER

McKOWN'S MTN

**LEGEND:**

- MW-1209 ● BEDROCK MONITORING WELL
- MW-1218 ☒ SHALLOW MONITORING WELL
- MW-1209A ●  
MW-1209 ● MONITORING WELL NEST  
BEDROCK AND SHALLOW (A)

**WILLIAM STATES LEE III  
 NUCLEAR STATION UNITS 1 & 2**

Cross Sections of Lee Nuclear Site:  
 Index Map

FIGURE 2.4.12-205 (Sheet 1 of 4) Rev 1

Datum: GCS North American 1983  
 Projection: NAD 1983 UTM Zone 17N

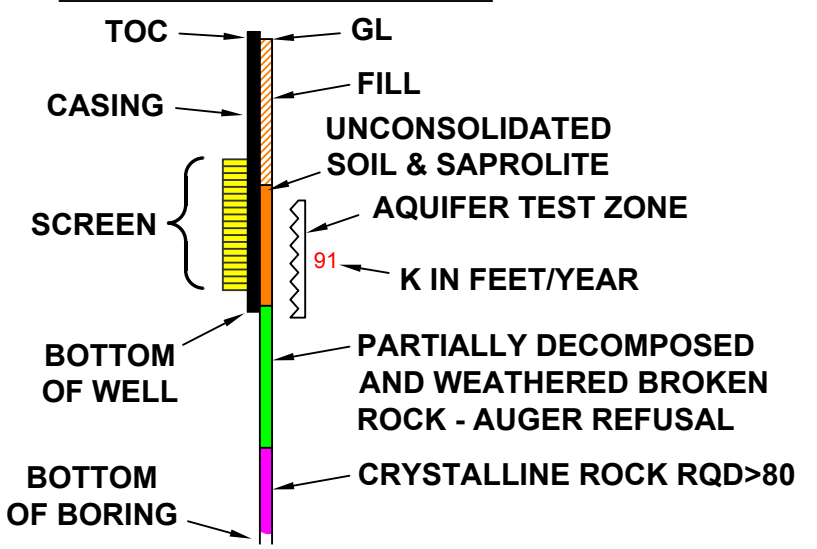
WLS  
 COL 2.4-4

700' ELEVATION AMSL

**A** HISTORICAL TOPOGRAPHIC DATA FROM USGS BLACKSBURG SOUTH SC QUADRANGLE MAP (DATED 1971).  
 HISTORICAL WATER LEVEL DATA FROM CHEROKEE PSAR AND ER

**A'**

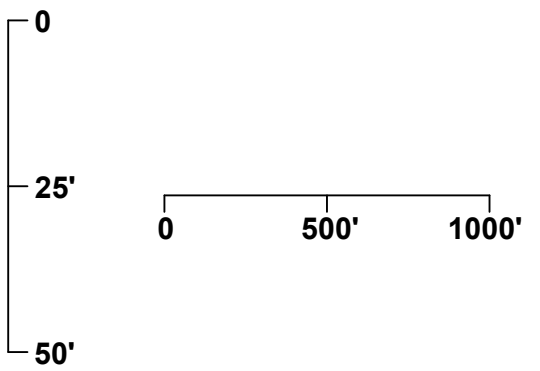
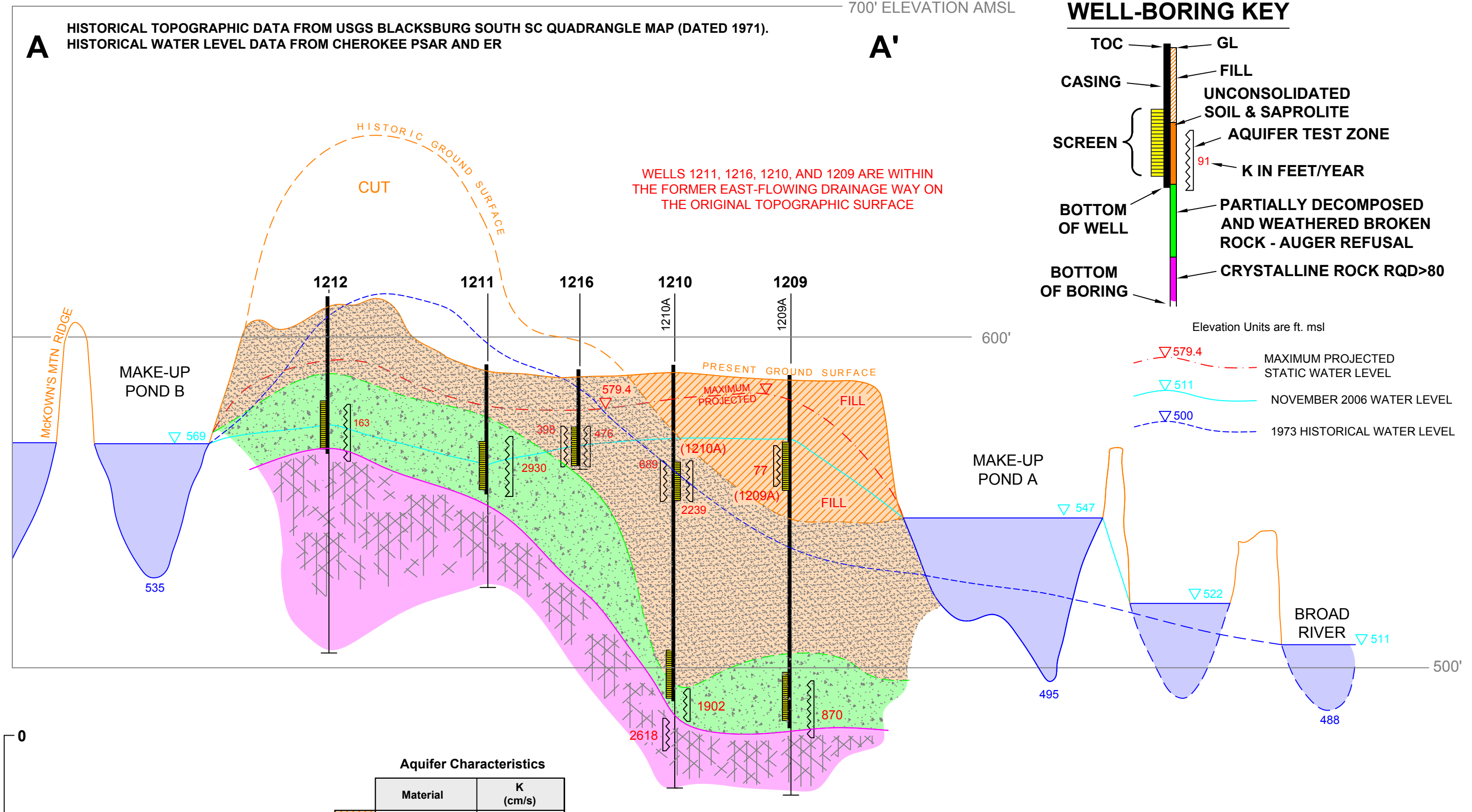
**WELL-BORING KEY**



Elevation Units are ft. msl

- ▽ 579.4 MAXIMUM PROJECTED STATIC WATER LEVEL
- ▽ 511 NOVEMBER 2006 WATER LEVEL
- ▽ 500 1973 HISTORICAL WATER LEVEL

WELLS 1211, 1216, 1210, AND 1209 ARE WITHIN THE FORMER EAST-FLOWING DRAINAGE WAY ON THE ORIGINAL TOPOGRAPHIC SURFACE



Aquifer Characteristics		
Material	K (cm/s)	
Fill Material	$6.2 \times 10^{-4}$	
Soil and Saprolite	$3.2 \times 10^{-4}$	
Partly Weathered Rock	$1.4 \times 10^{-3}$	

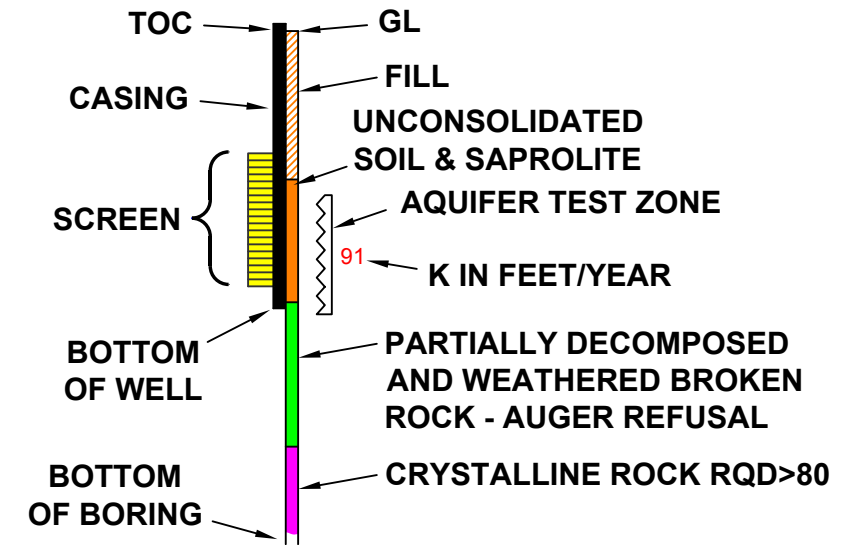
**WILLIAM STATES LEE III  
 NUCLEAR STATION UNITS 1 & 2**

Cross Sections of Lee Nuclear Site:  
 A - A'

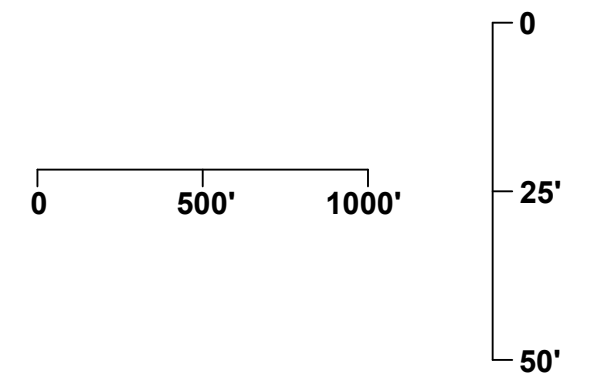
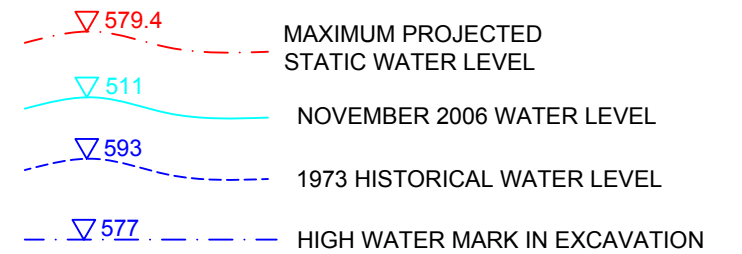
FIGURE 2.4.12-205  
 (Sheet 2 of 4)      Rev 1

700' ELEVATION AMSL

### WELL-BORING KEY



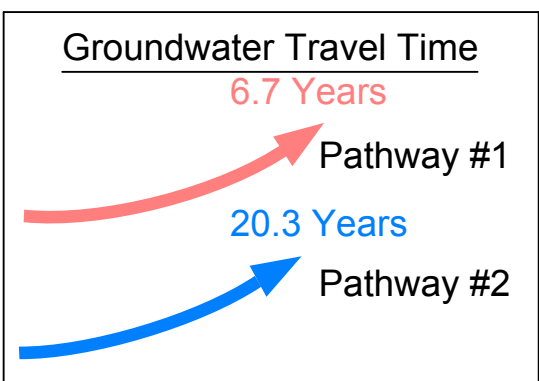
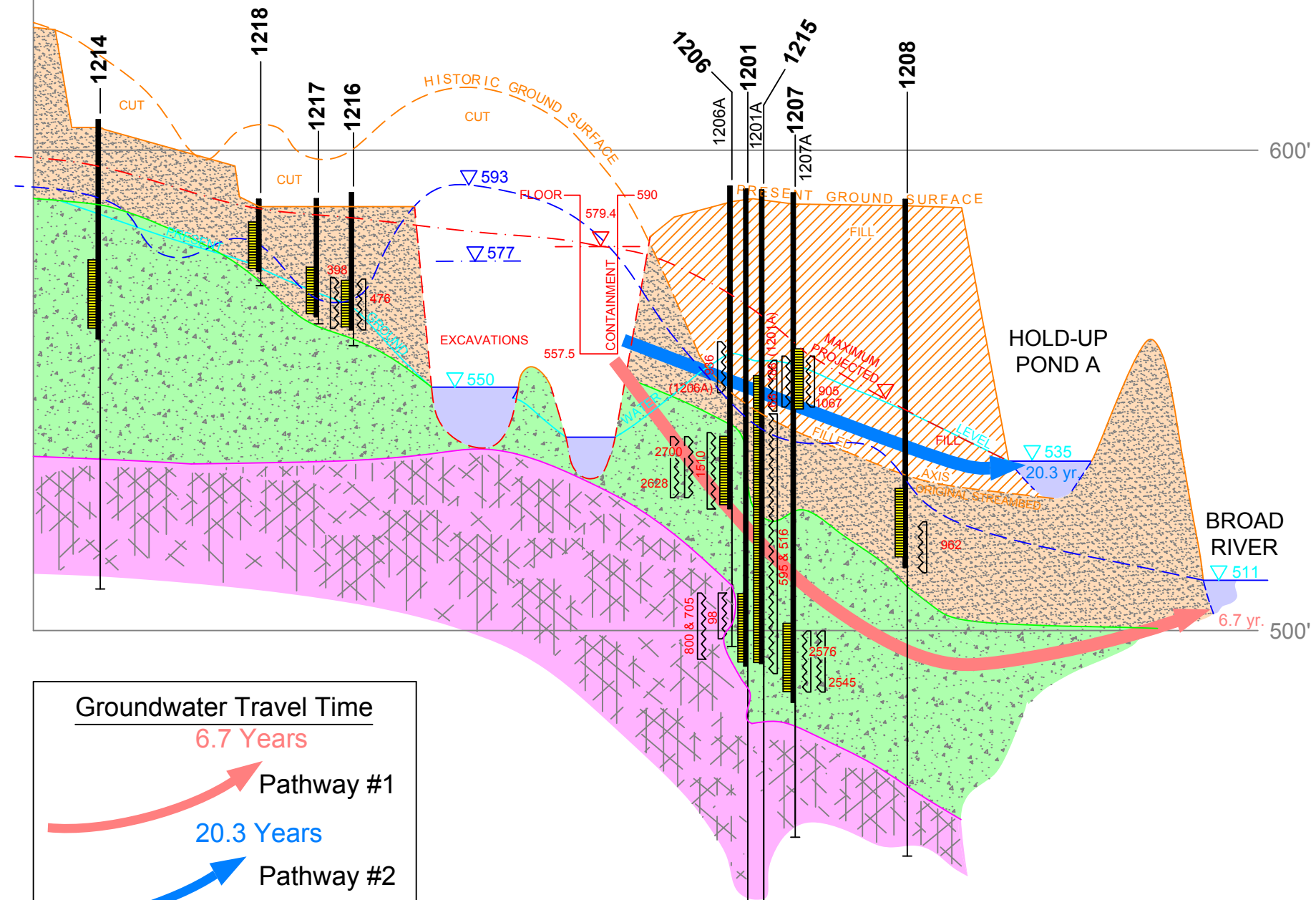
Elevation Units are ft. msl



### Aquifer Characteristics

	Material	K (cm/s)	Effective Porosity	GW Gradient (ft/ft)	GW Velocity (ft/yr)	Time (yr) to Exposure Pt.
B	Fill Material	$6.2 \times 10^{-4}$	31%	0.034	70	20.3
	Soil and Saprolite	$3.2 \times 10^{-4}$	20%	0.034	56	
	Partly Weathered Rock	$1.4 \times 10^{-3}$	18%	0.036	290	6.7

HISTORICAL TOPOGRAPHIC DATA FROM USGS BLACKSBURG SOUTH SC QUADRANGLE MAP (DATED 1971).  
HISTORICAL WATER LEVEL DATA FROM CHEROKEE PSAR AND ER

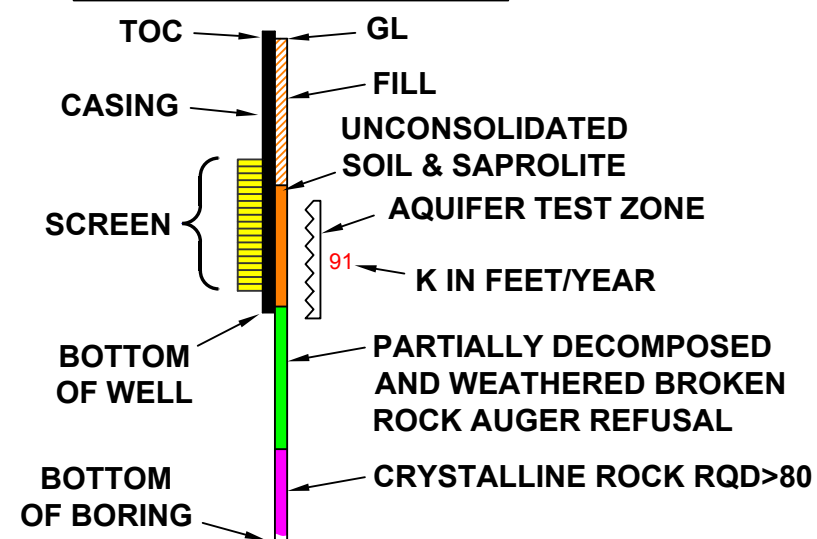


WELLS 1206, 1201, 1215, 1207 AND 1208 ARE WITHIN THE FORMER NORTH-FLOWING DRAINAGE WAY ON THE ORIGINAL TOPOGRAPHIC SURFACE

WILLIAM STATES LEE III  
NUCLEAR STATION UNITS 1 & 2  
Cross Sections of Lee Nuclear Site:  
B - B'  
FIGURE 2.4.12-205  
(Sheet 3 of 4) Rev 1

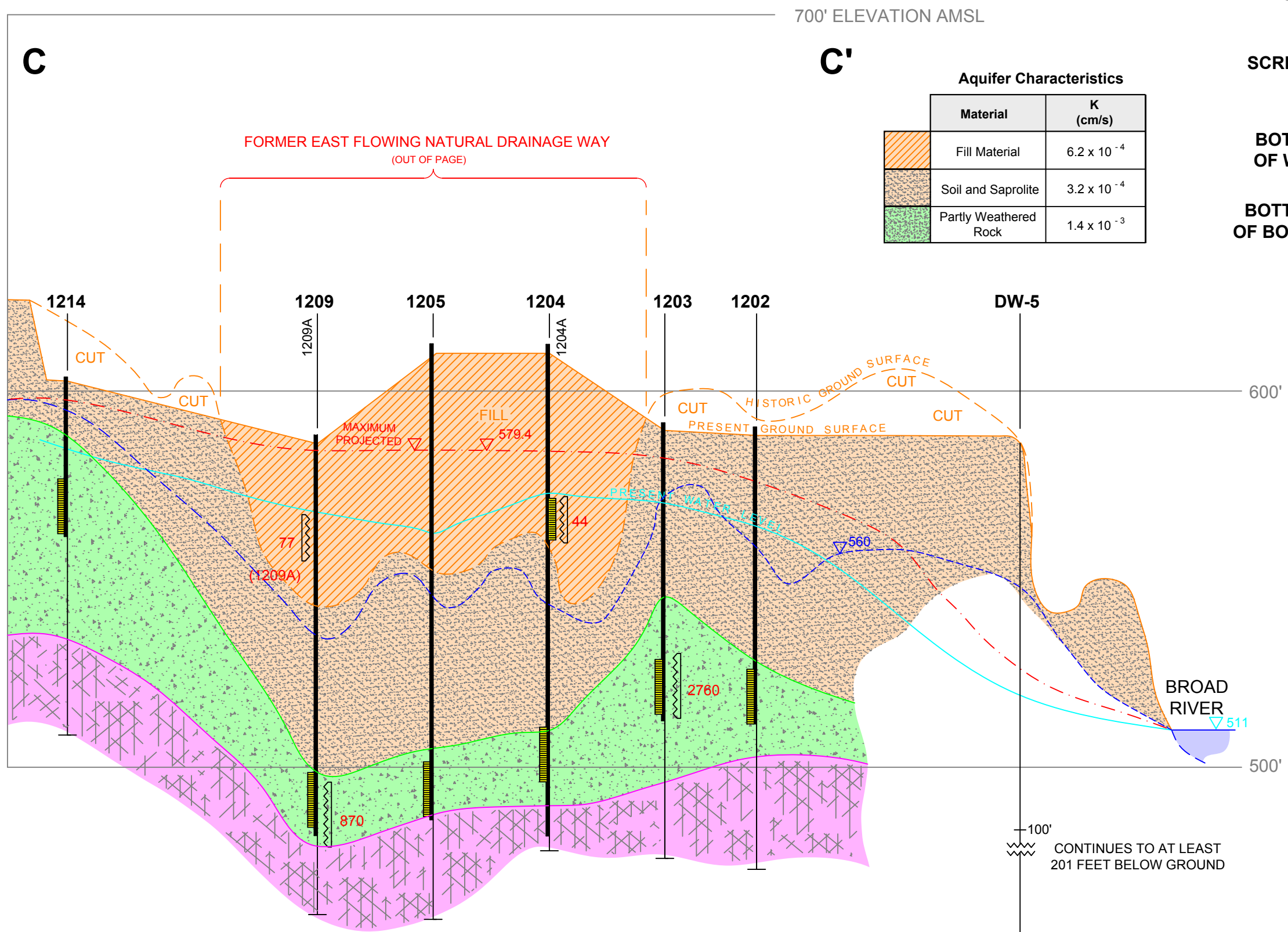
HISTORICAL TOPOGRAPHIC DATA FROM USGS BLACKSBURG SOUTH SC QUADRANGLE MAP (DATED 1971).  
 HISTORICAL WATER LEVEL DATA FROM CHEROKEE PSAR AND ER

### WELL-BORING KEY



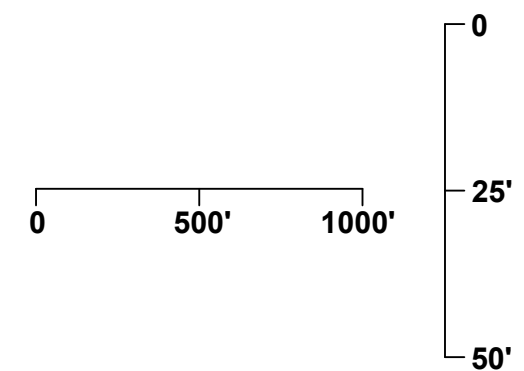
**Aquifer Characteristics**

Material	K (cm/s)
Fill Material	$6.2 \times 10^{-4}$
Soil and Saprolite	$3.2 \times 10^{-4}$
Partly Weathered Rock	$1.4 \times 10^{-3}$



Elevation Units are ft. msl

- ▽ 579.4 MAXIMUM PROJECTED STATIC WATER LEVEL
- ▽ 511 NOVEMBER 2006 WATER LEVEL
- ▽ 500 1973 HISTORICAL WATER LEVEL



WILLIAM STATES LEE III  
 NUCLEAR STATION UNITS 1 & 2  
 Cross Sections of Lee Nuclear Site:  
 C - C'  
 FIGURE 2.4.12-205  
 (Sheet 4 of 4) Rev 1