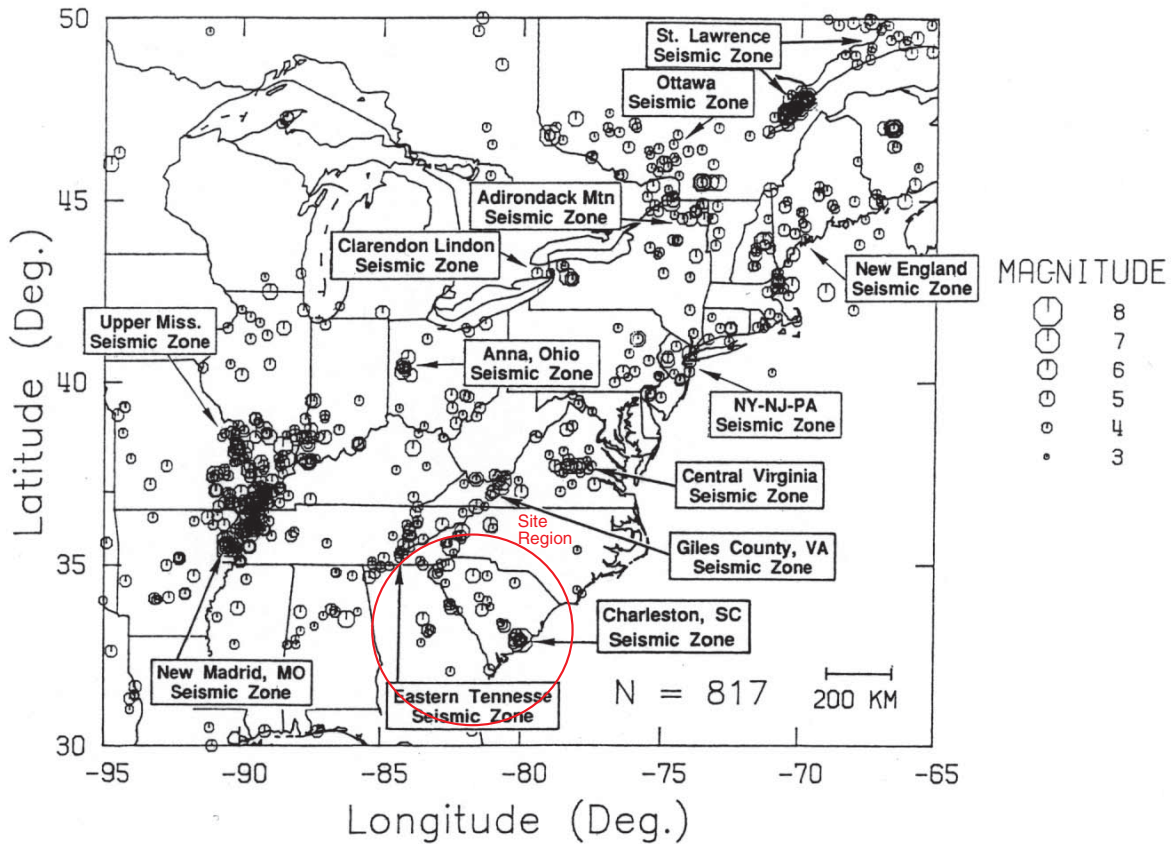


Figure 2.5.1-14 Terrains and Physiographic Provinces of Site Region



Source: Bollinger et al. 1992

Figure 2.5.1-15 Seismic Source Zones and Seismicity in Central and Eastern North America

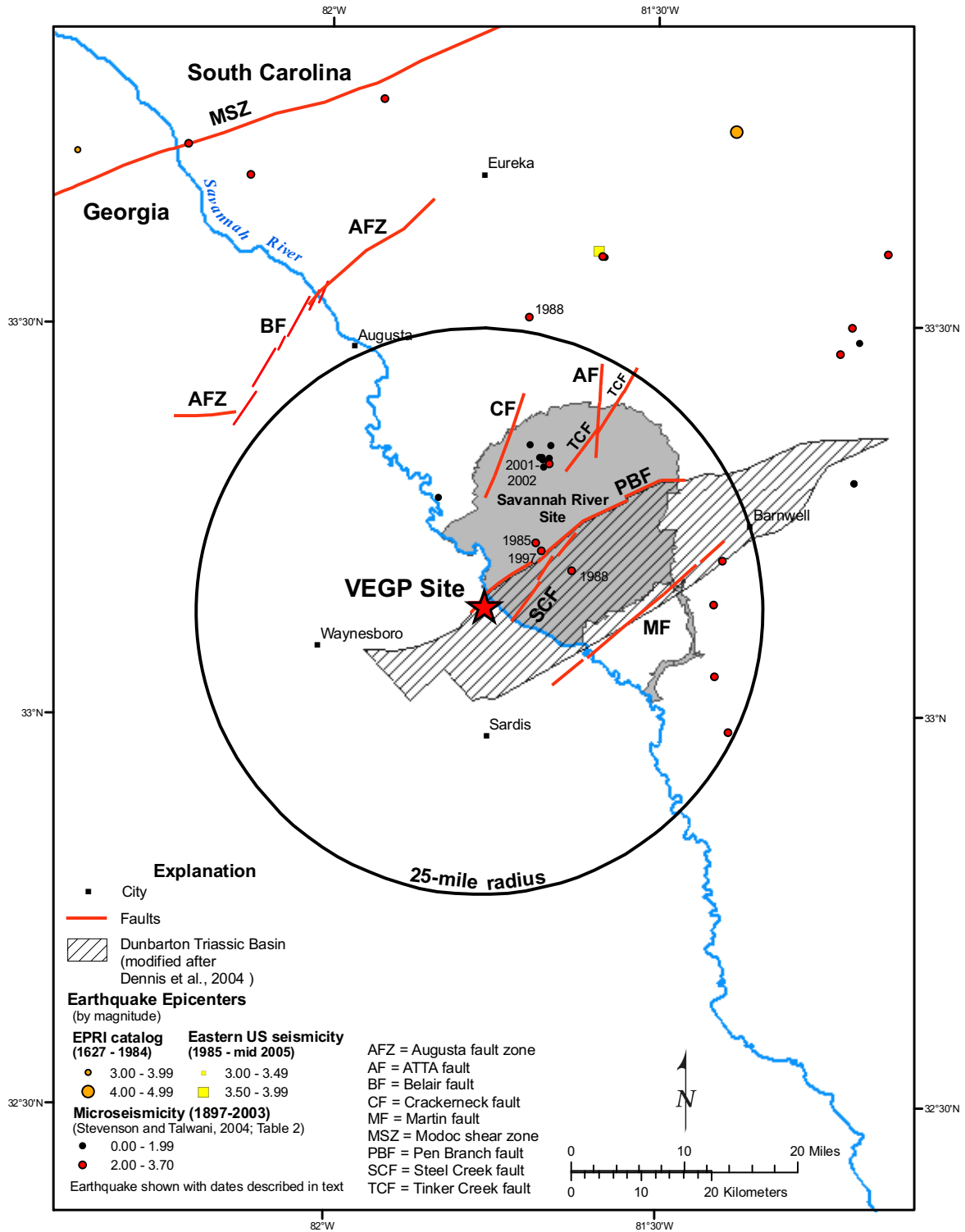
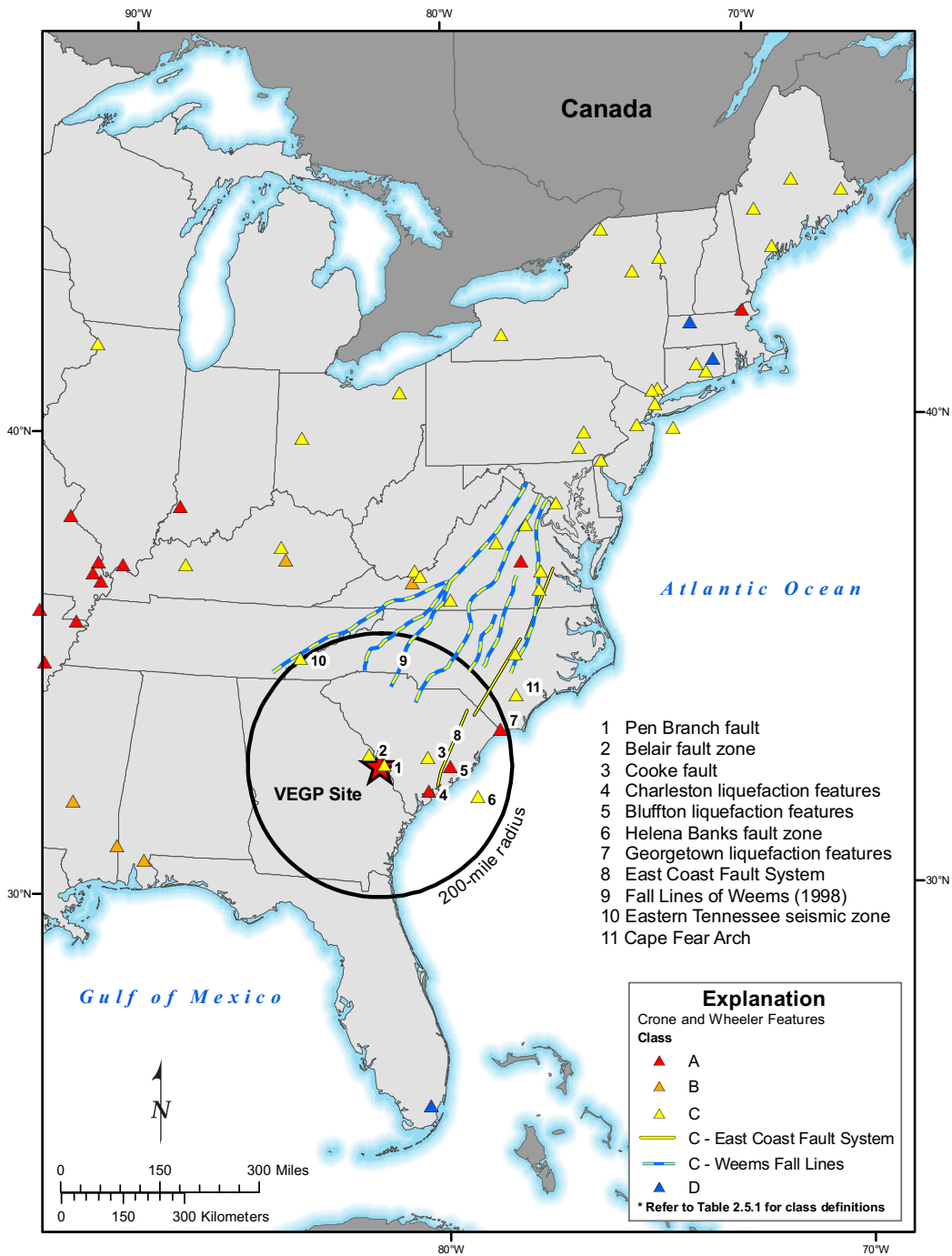


Figure 2.5.1-16 Site Vicinity Tectonic Features and Seismicity



Source: Crone and Wheeler (2000), Wheeler (2005)

Source: Crone and Wheeler 2000; Wheeler 2005

Figure 2.5.1-17 Potential Quaternary Features Map

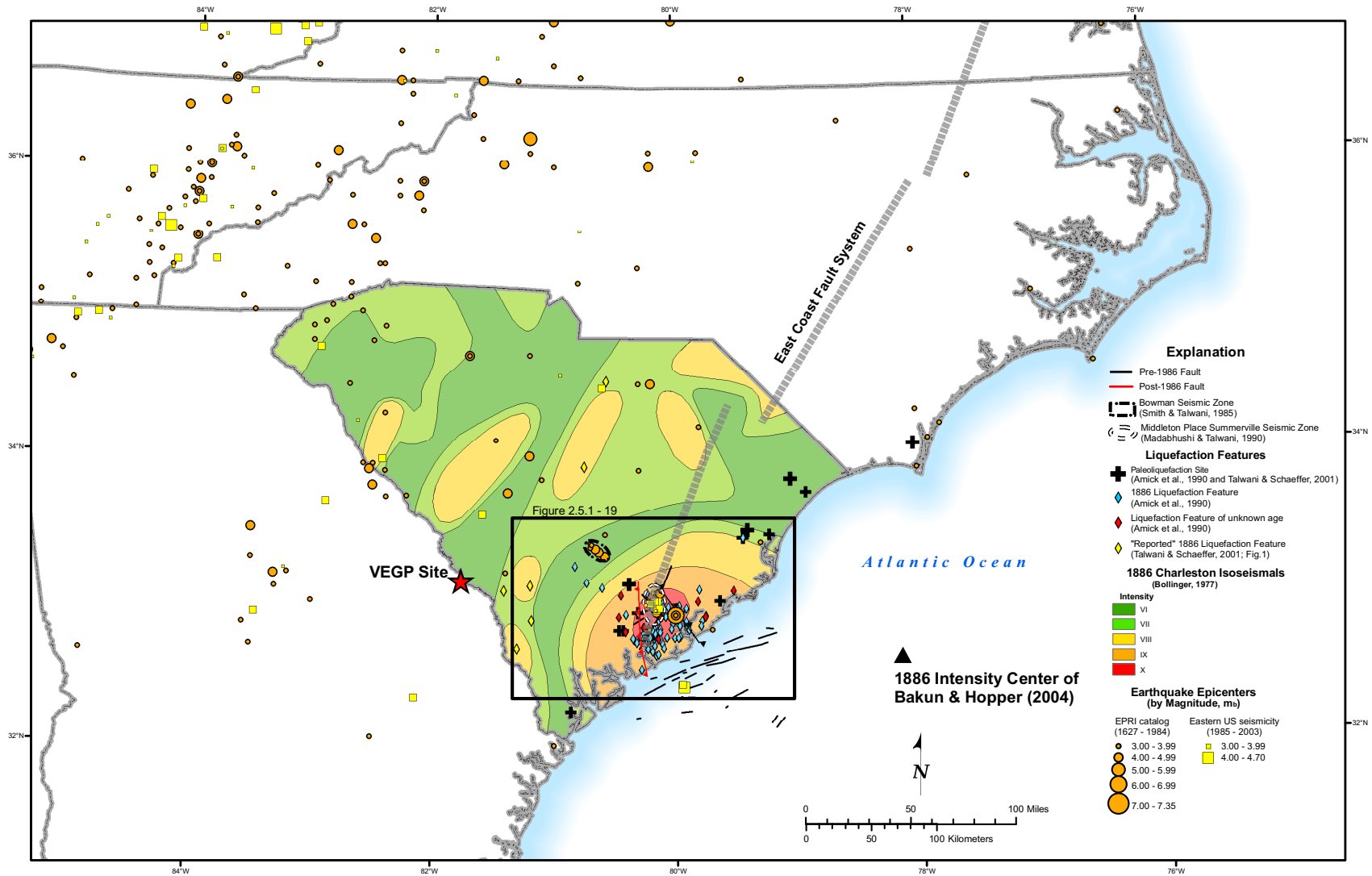


Figure 2.5.1-18 Regional Charleston Tectonic Features

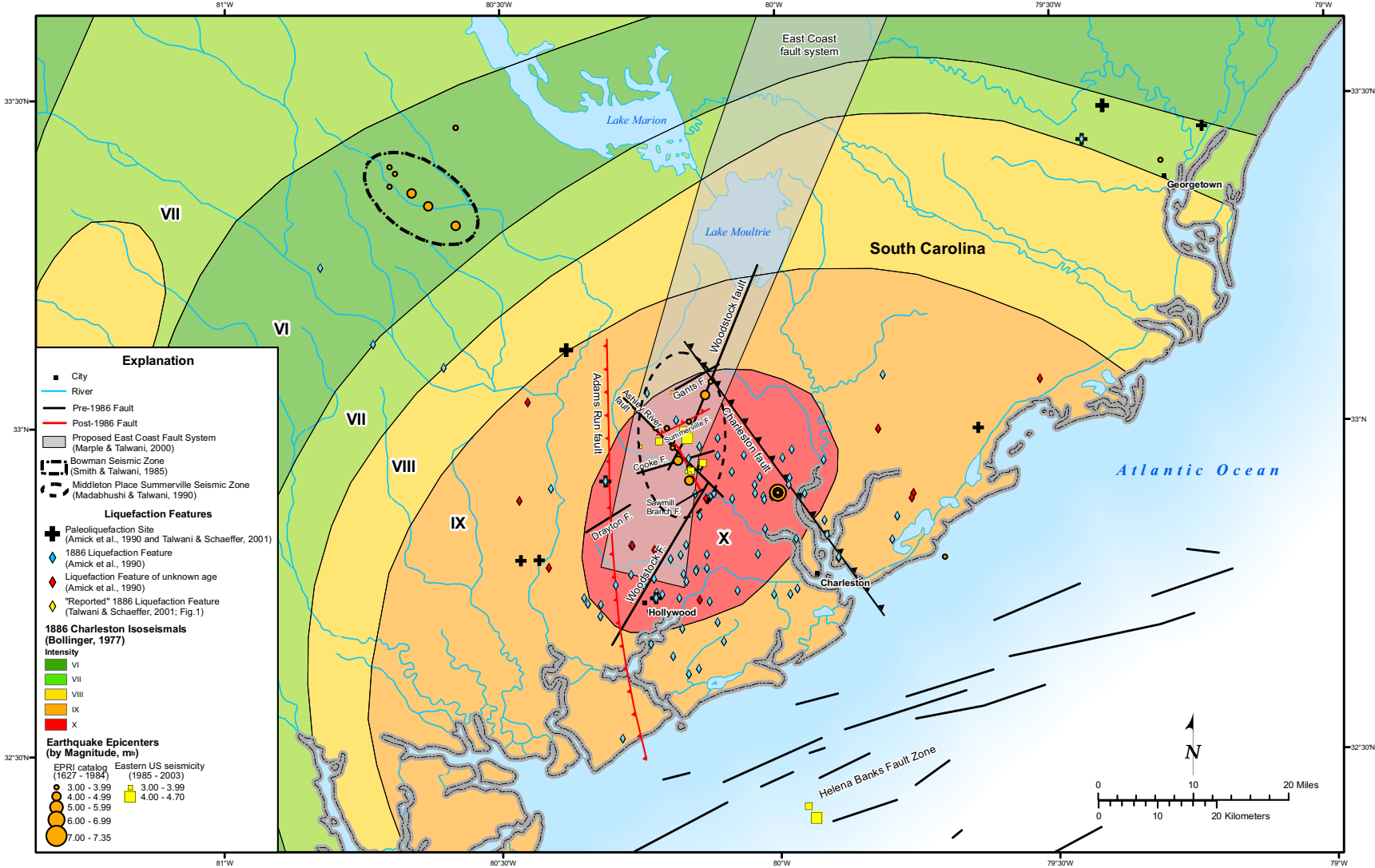


Figure 2.5.1-19 Local Charleston Tectonic Features

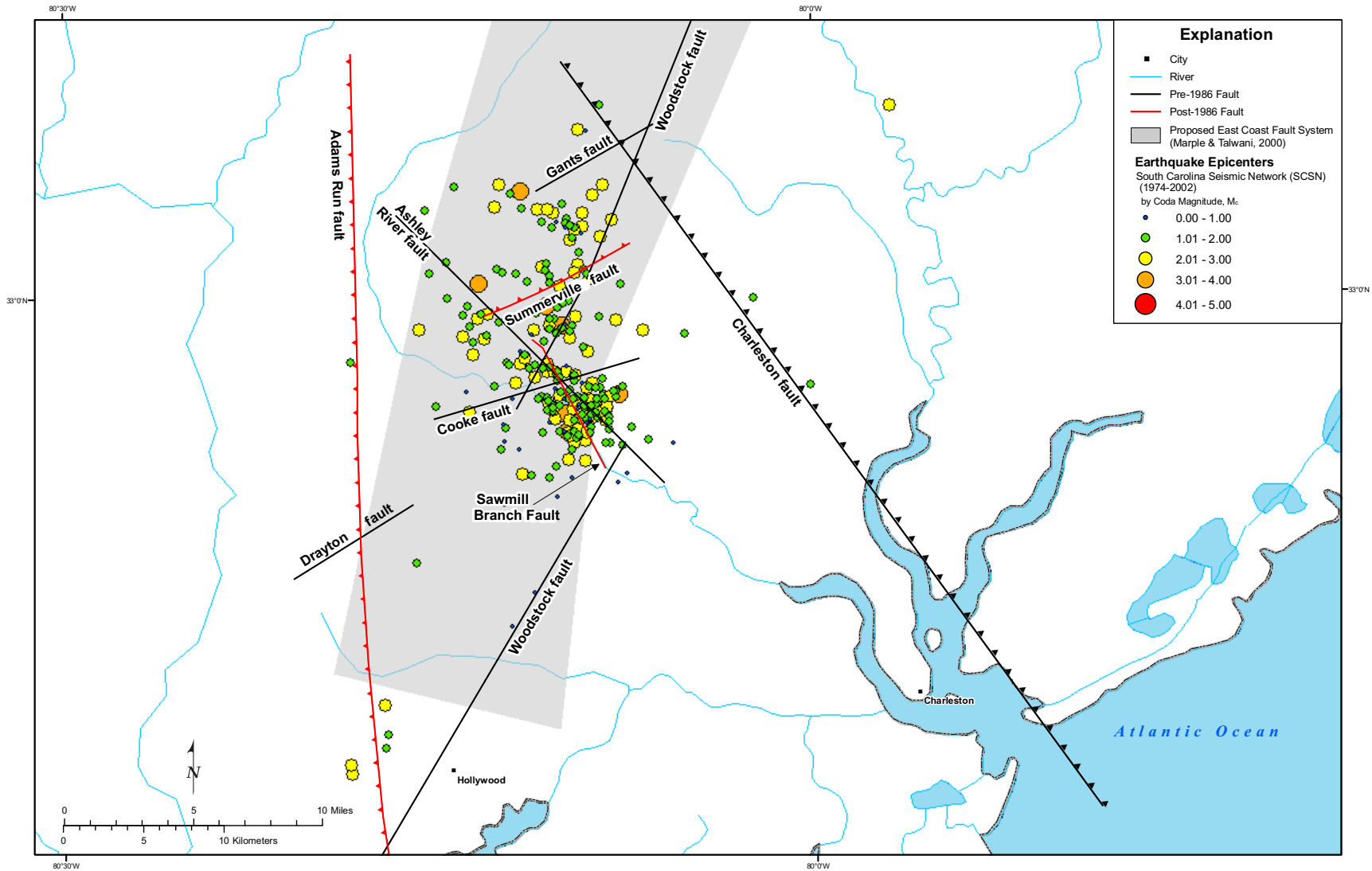
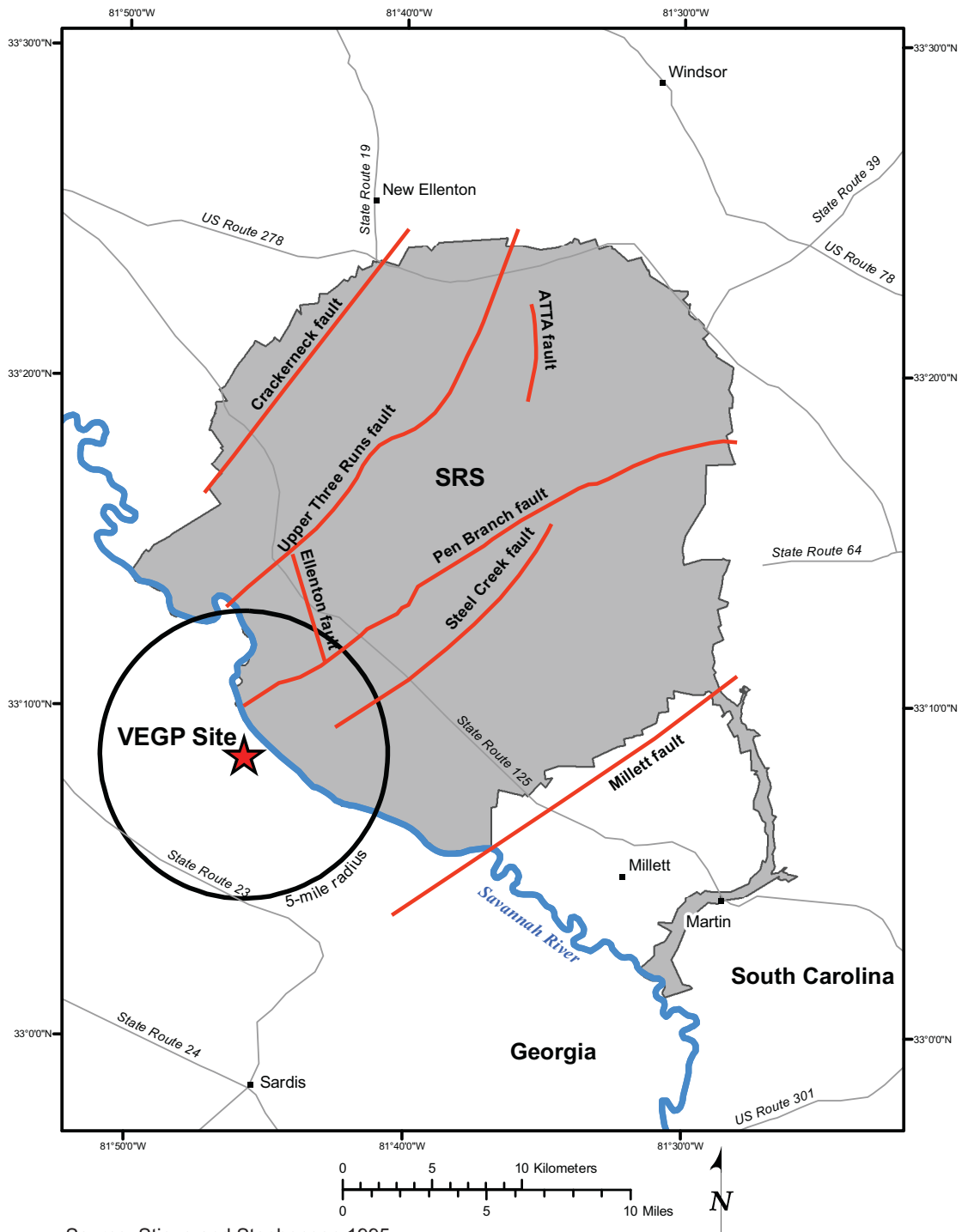
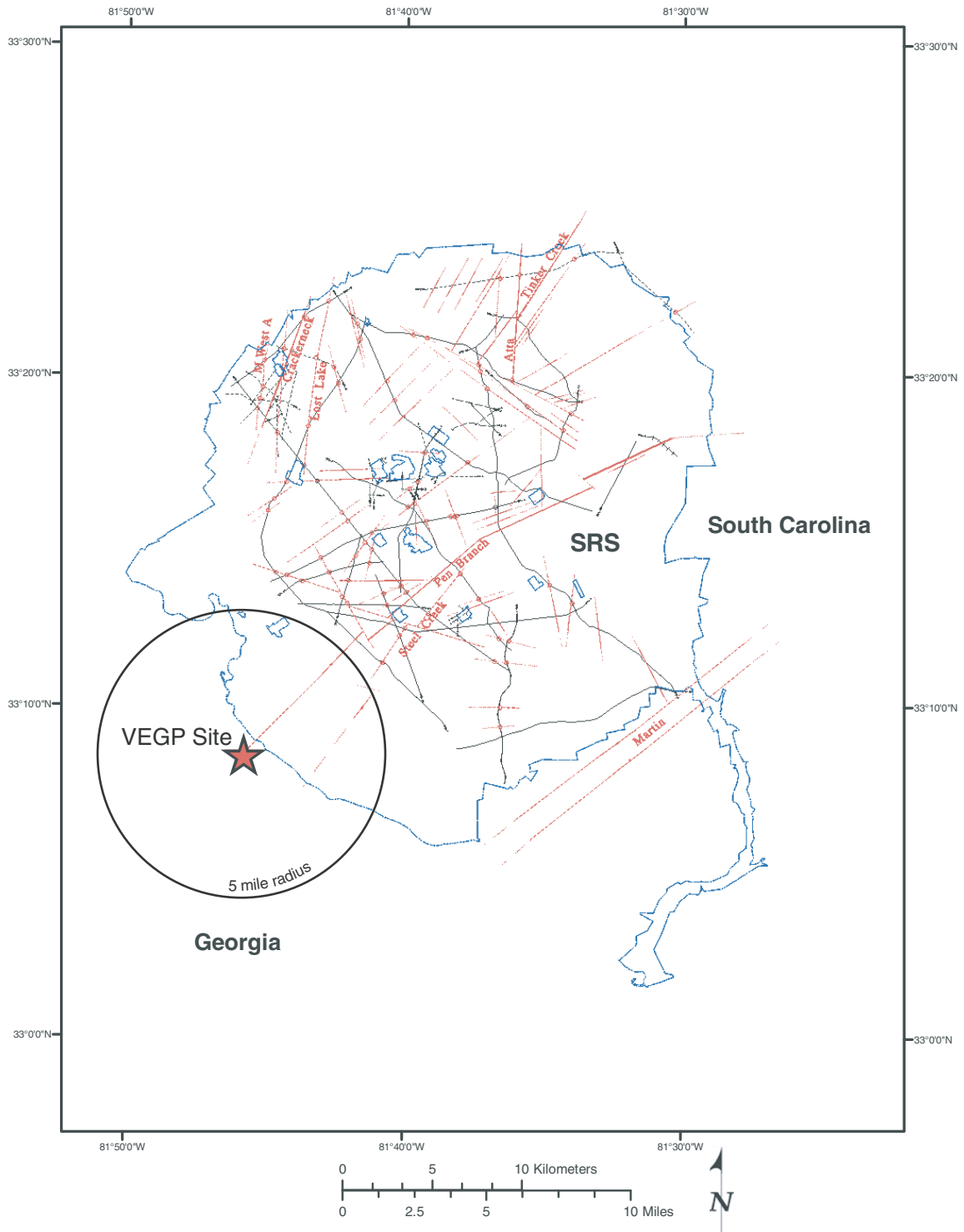


Figure 2.5.1-20 Local Charleston Seismicity



Source: Stieve and Stephenson 1995

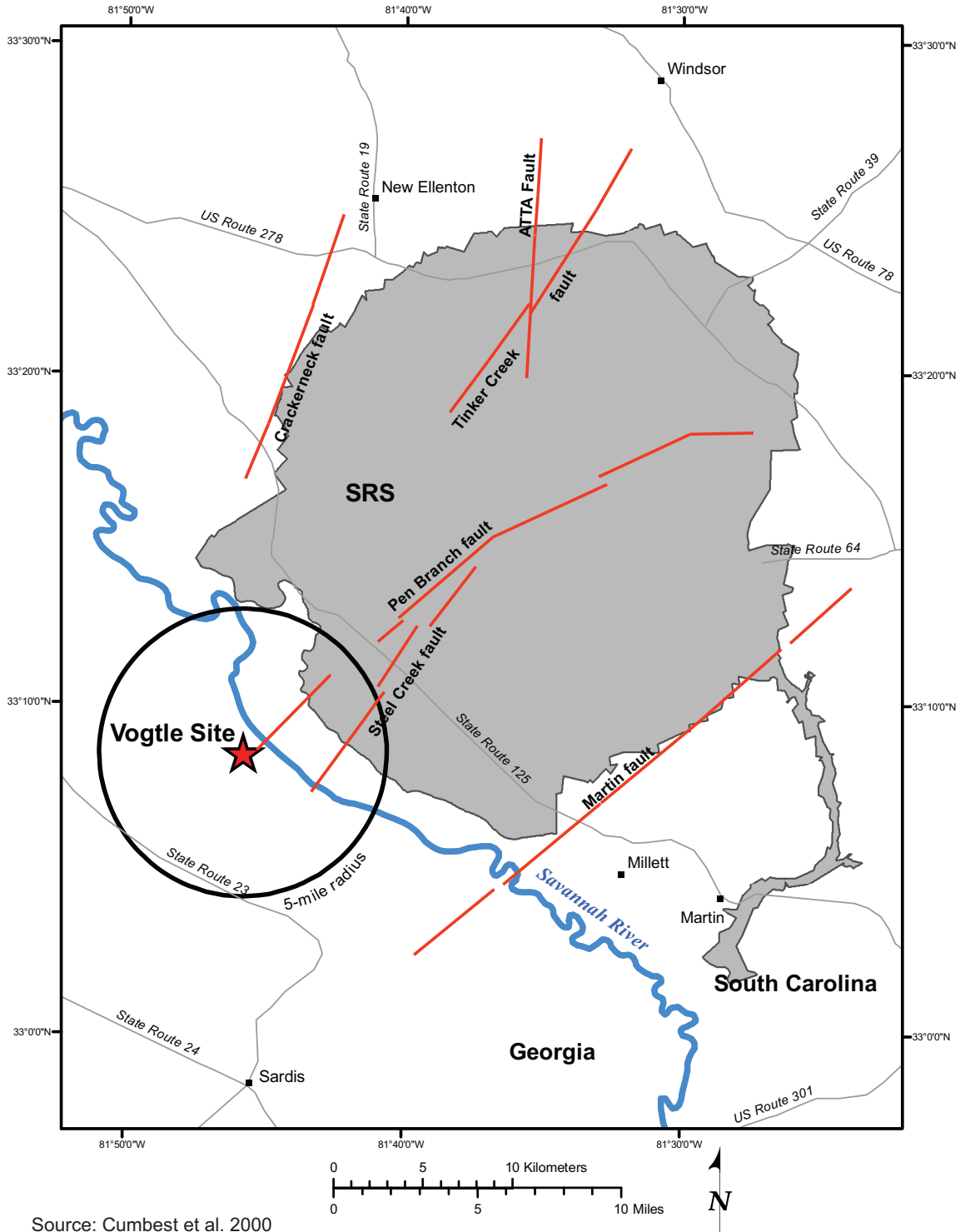
Figure 2.5.1-21 SRS Faults from Stieve and Stephenson (1995)



Source: Cumbest et al. 1998

Source: Cumbest et al. 1998

Figure 2.5.1-22 SRS Faults from Cumbest et al. (1998)



Source: Cumbest et al. 2000

Figure 2.5.1-23 SRS Faults—First-Order Faults of Cumbest et al. (2000)

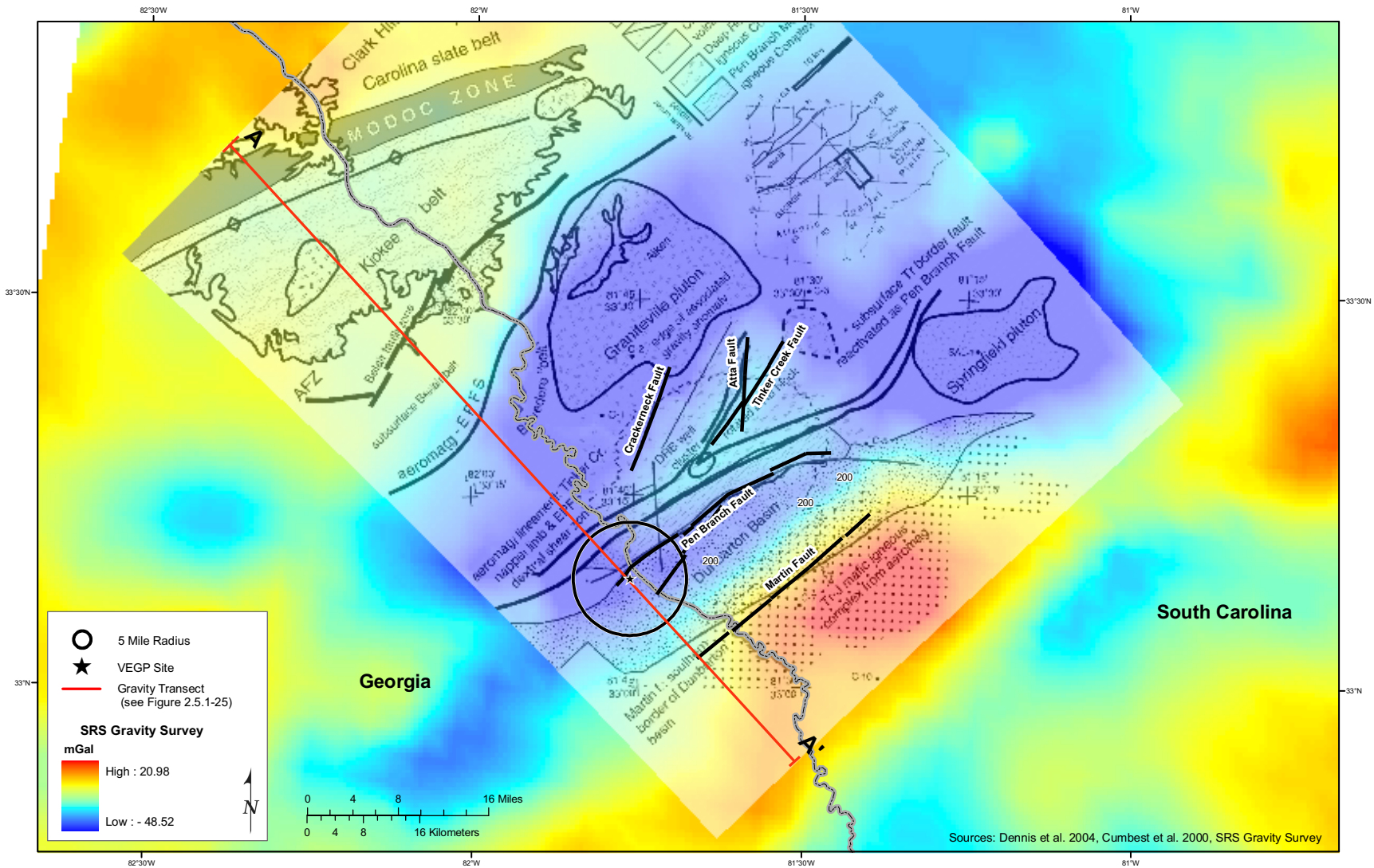


Figure 2.5.1-24 Gravity Field in the Vicinity of the VEGP Site

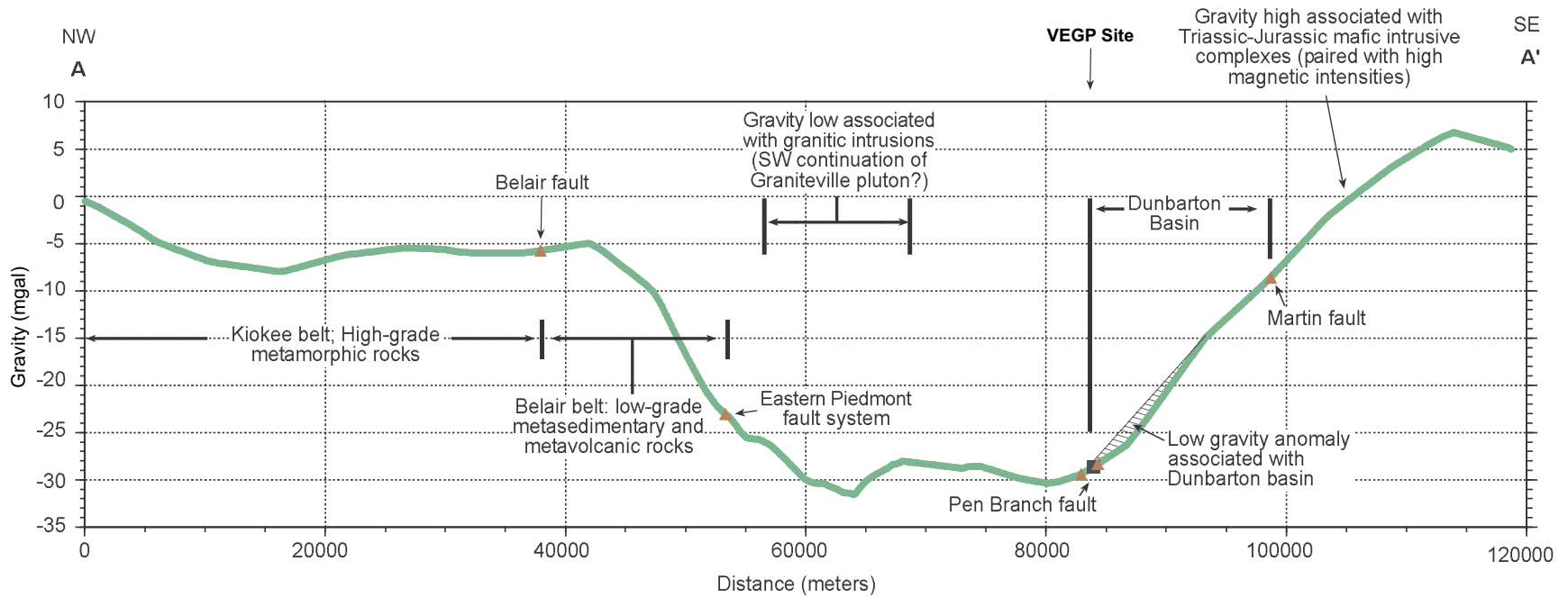


Figure 2.5.1-25 Northwest–Southeast Gravity Profile Through the VEGP Site

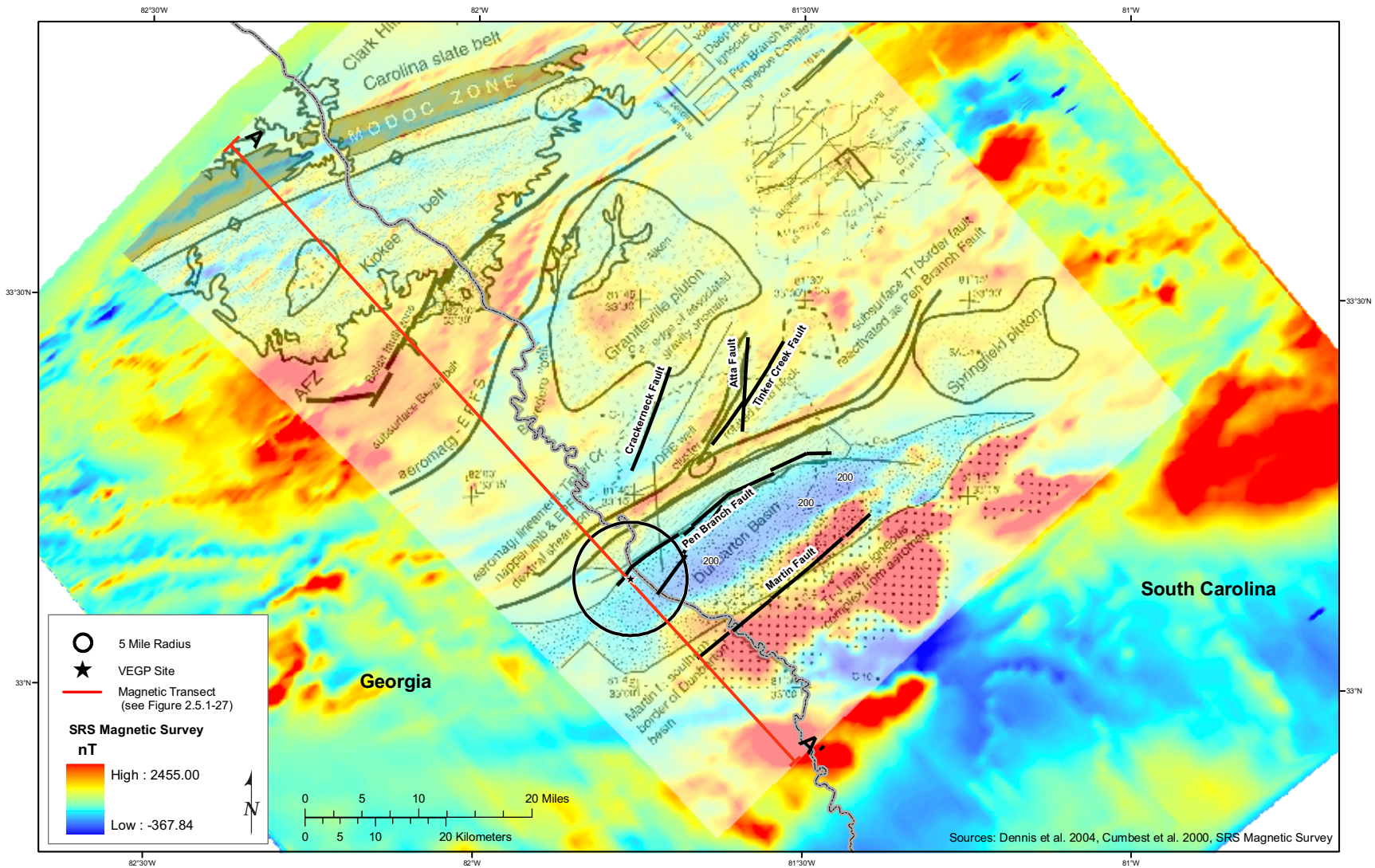


Figure 2.5.1-26 Magnetic Field in the Vicinity of the VEGP Site

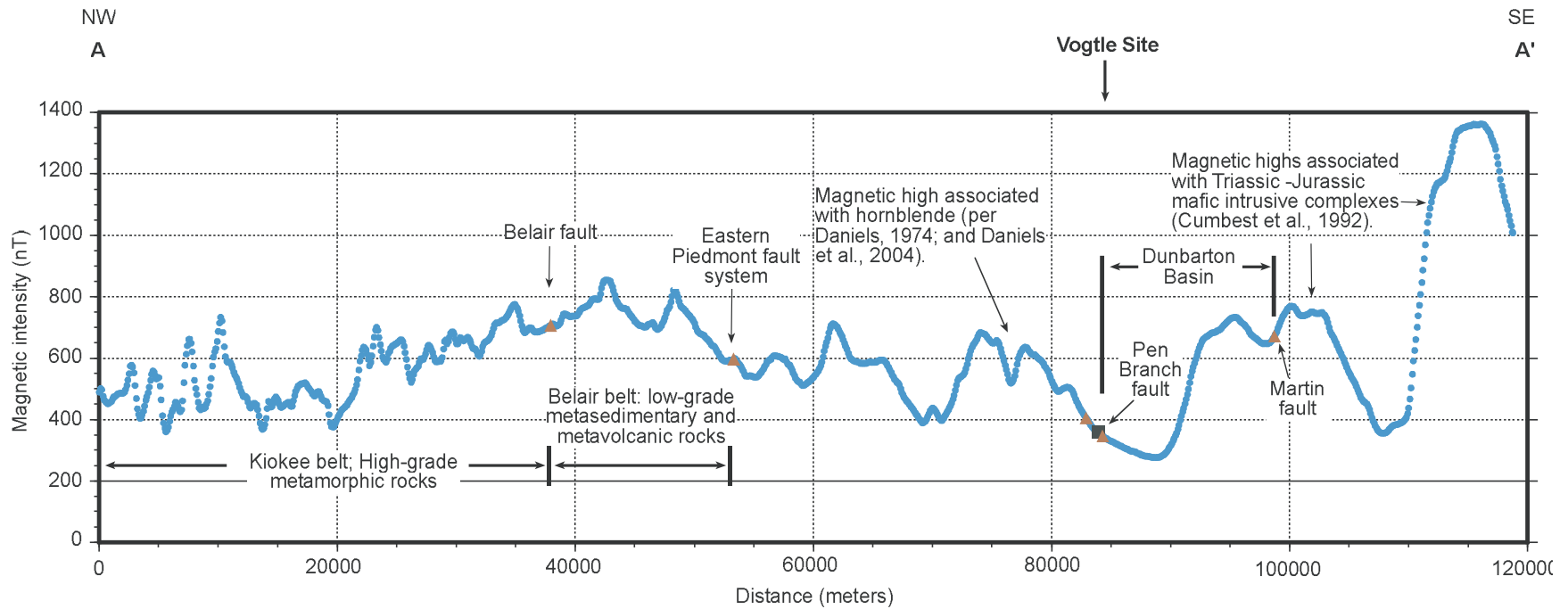


Figure 2.5.1-27 Northwest-Southeast Profile of Magnetic Intensity Through the VEGP Site

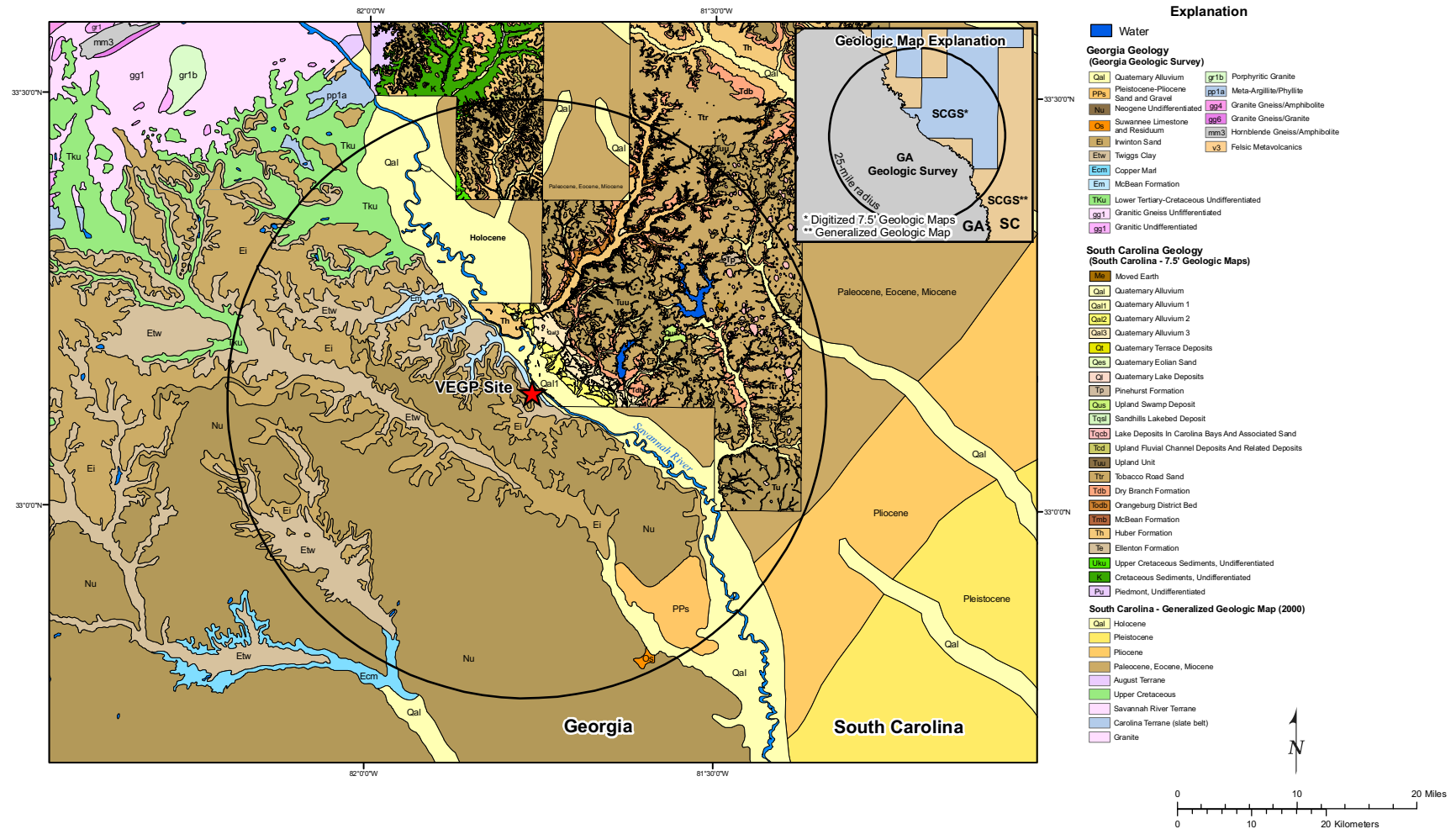
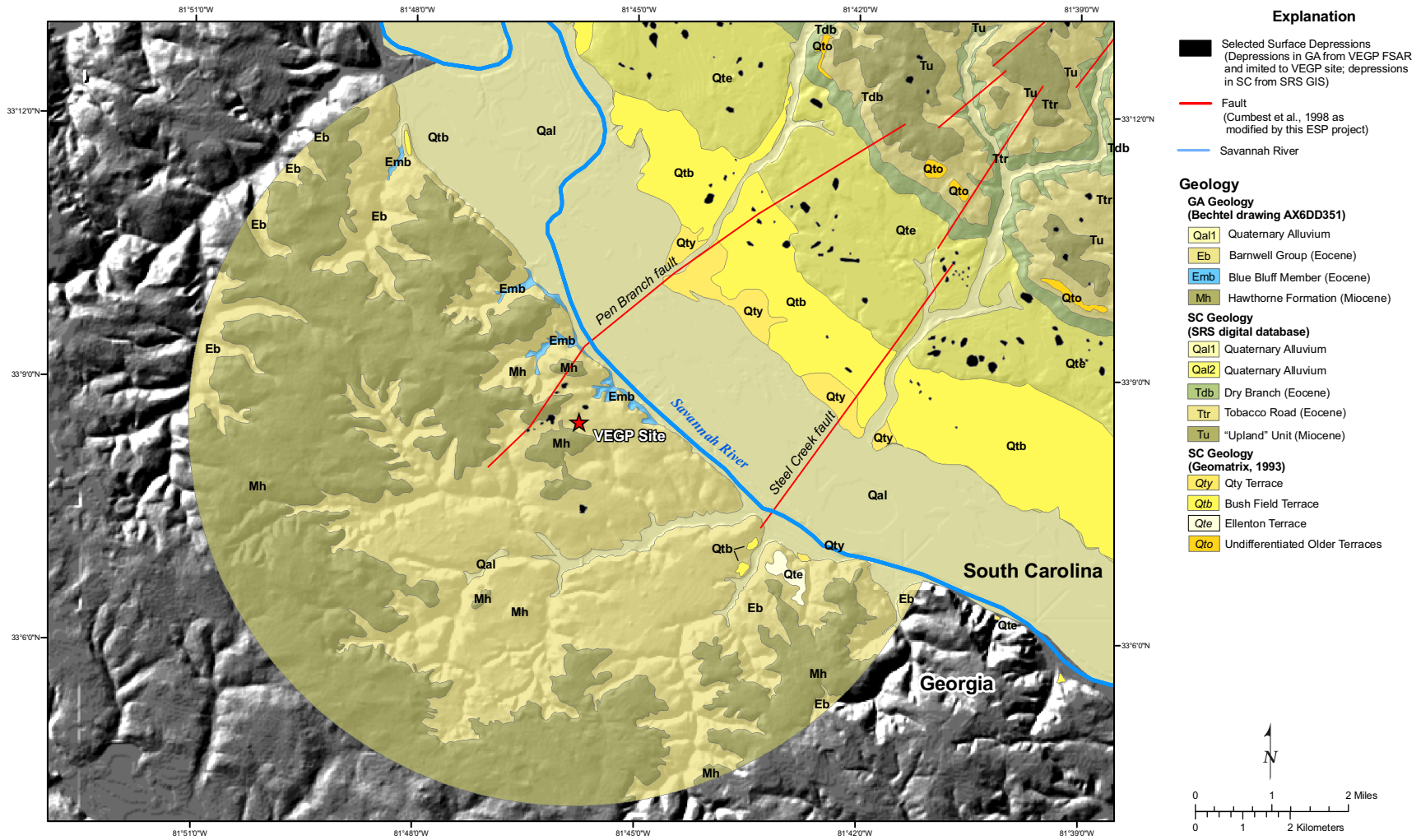


Figure 2.5.1-28 Site Vicinity Geologic Map (25-Mile Radius)



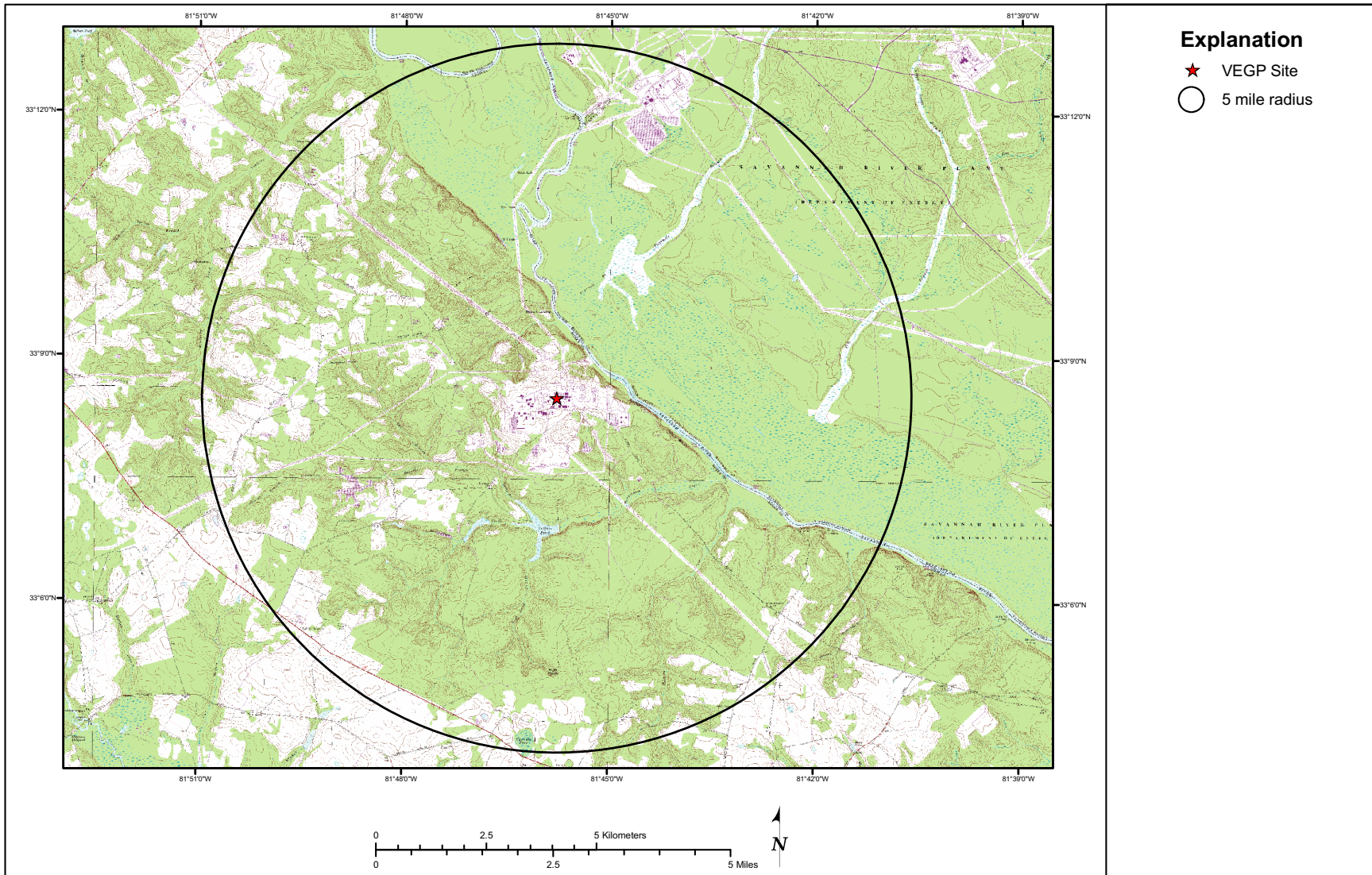


Figure 2.5.1-30 Site Area Topographic Map (5-Mile Radius)

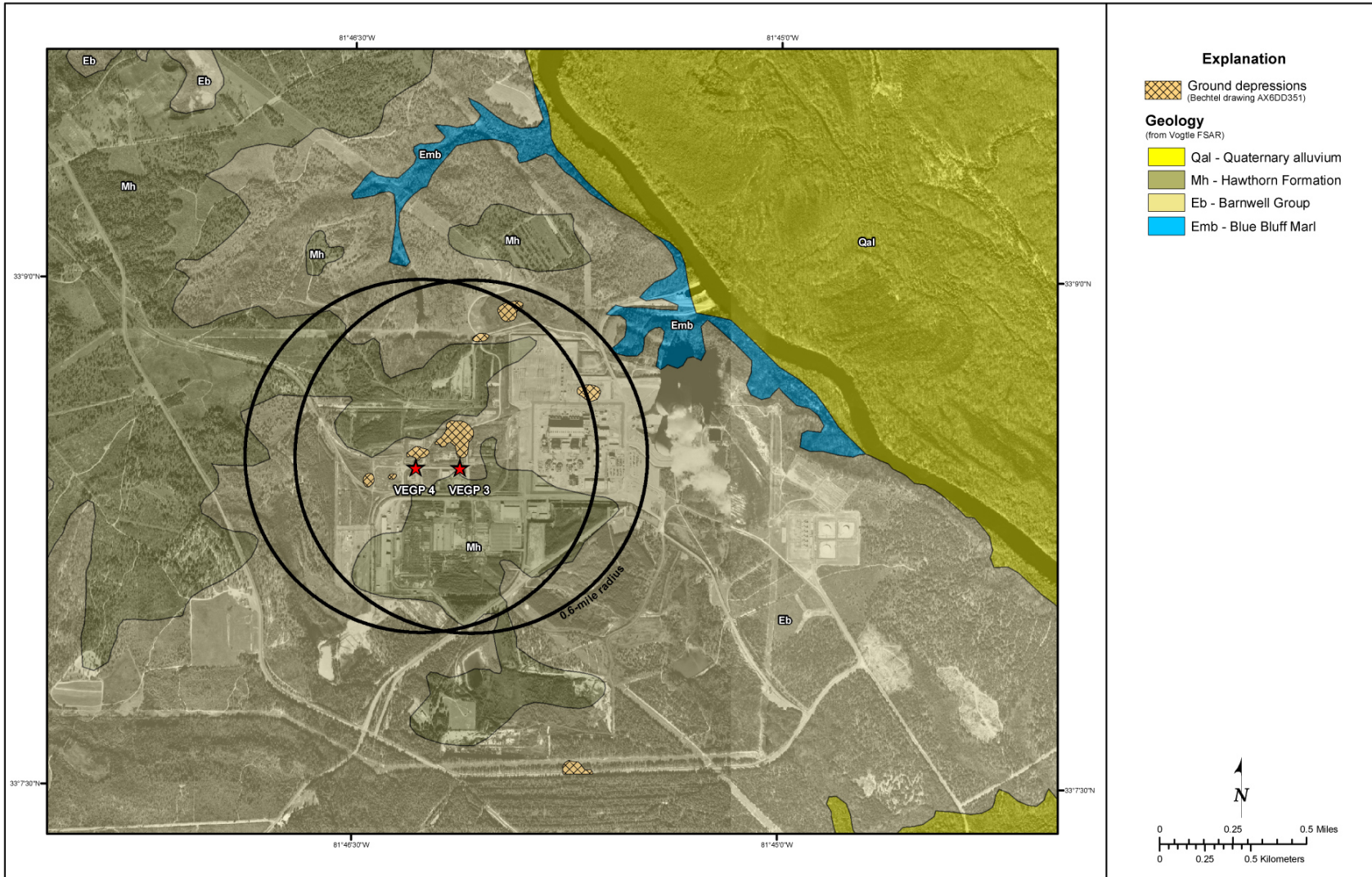


Figure 2.5.1-31 Site Geologic Map (0.6-Mile Radius)

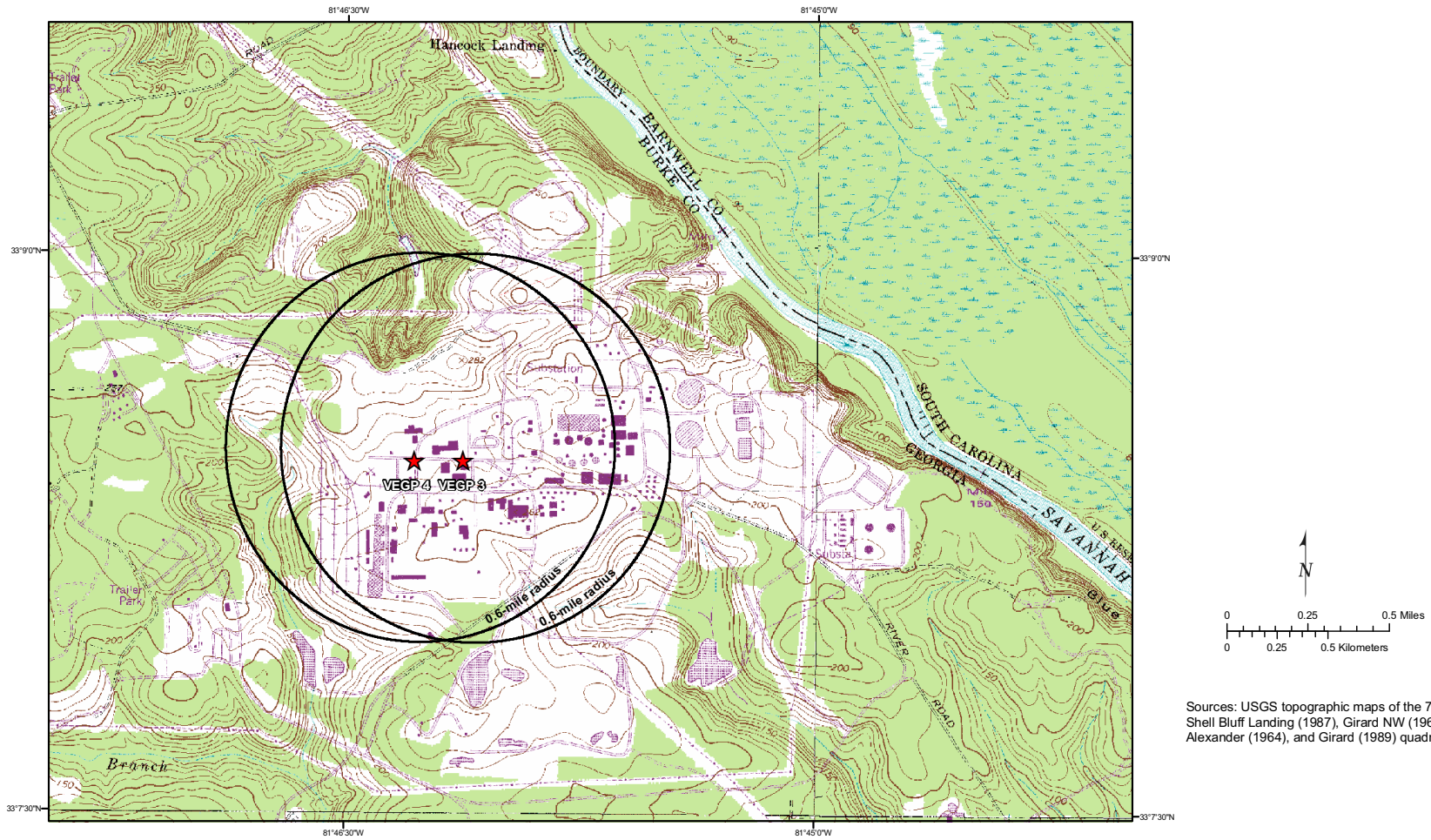


Figure 2.5.1-32 Site Topographic Map (0.6-Mile Radius)

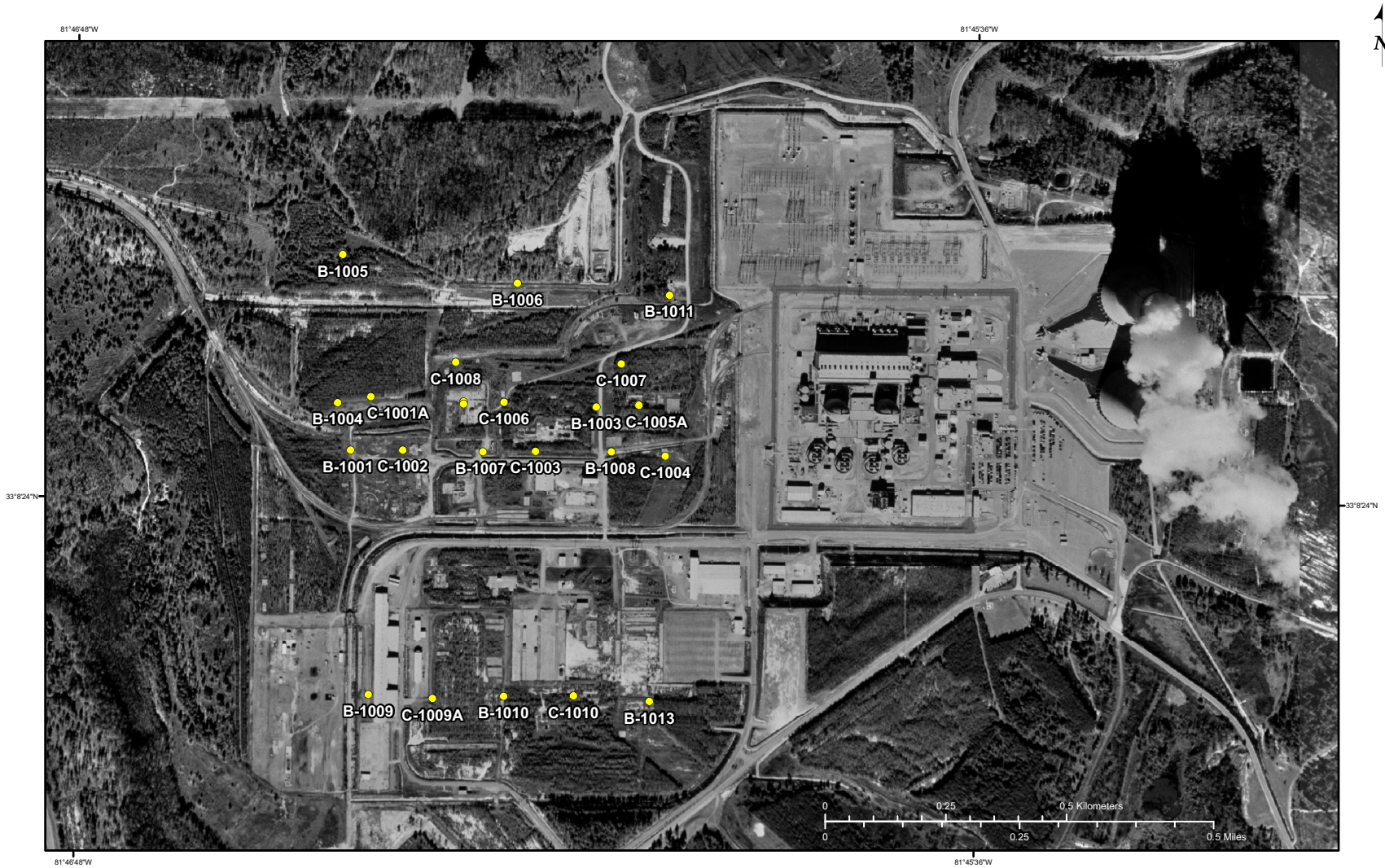


Figure 2.5.1-33 Site Borings Location Map