

## CBRLicenseRenNPem Resource

---

**From:** Robert Lenhard [rlenhard@cnwra.swri.edu]  
**Sent:** Thursday, July 31, 2008 3:34 PM  
**To:** Hakan Basagaoglu; Roland Benke  
**Subject:** FW: Map files from CBR  
**Attachments:** Crow Butte Map North.pdf; Crow Butte Map South.pdf

FYI

---

**From:** Stephen Cohen [mailto:Stephen.Cohen@nrc.gov]  
**Sent:** Thursday, July 31, 2008 2:16 PM  
**To:** Robert Lenhard  
**Cc:** CrowButte-LicenseRenewal Resource  
**Subject:** Map files from CBR

Please pass on to Roland and Hakan.

Stephen J. Cohen  
Team Leader - New Facility Licensing  
Office of Federal and State Materials  
and Environmental Management Programs  
U.S. Nuclear Regulatory Commission  
Mailstop T8F5  
Washington, DC 20555  
301-415-7182  
[stephen.cohen@nrc.gov](mailto:stephen.cohen@nrc.gov)

**Hearing Identifier:** CrowButteUR\_LicenseRenewal\_NonPublic  
**Email Number:** 32

**Mail Envelope Properties** (rlenhard@cnwra.swri.edu20080731153335)

**Subject:** FW: Map files from CBR  
**Sent Date:** 7/31/2008 3:33:35 PM  
**Received Date:** 7/31/2008 3:33:35 PM  
**From:** Robert Lenhard

**Created By:** rlenhard@cnwra.swri.edu

**Recipients:**

"Hakan Basagaoglu" <hbasagaoglu@cnwra.swri.edu>  
Tracking Status: None  
"Roland Benke" <rbenke@cnwra.swri.edu>  
Tracking Status: None

**Post Office:**

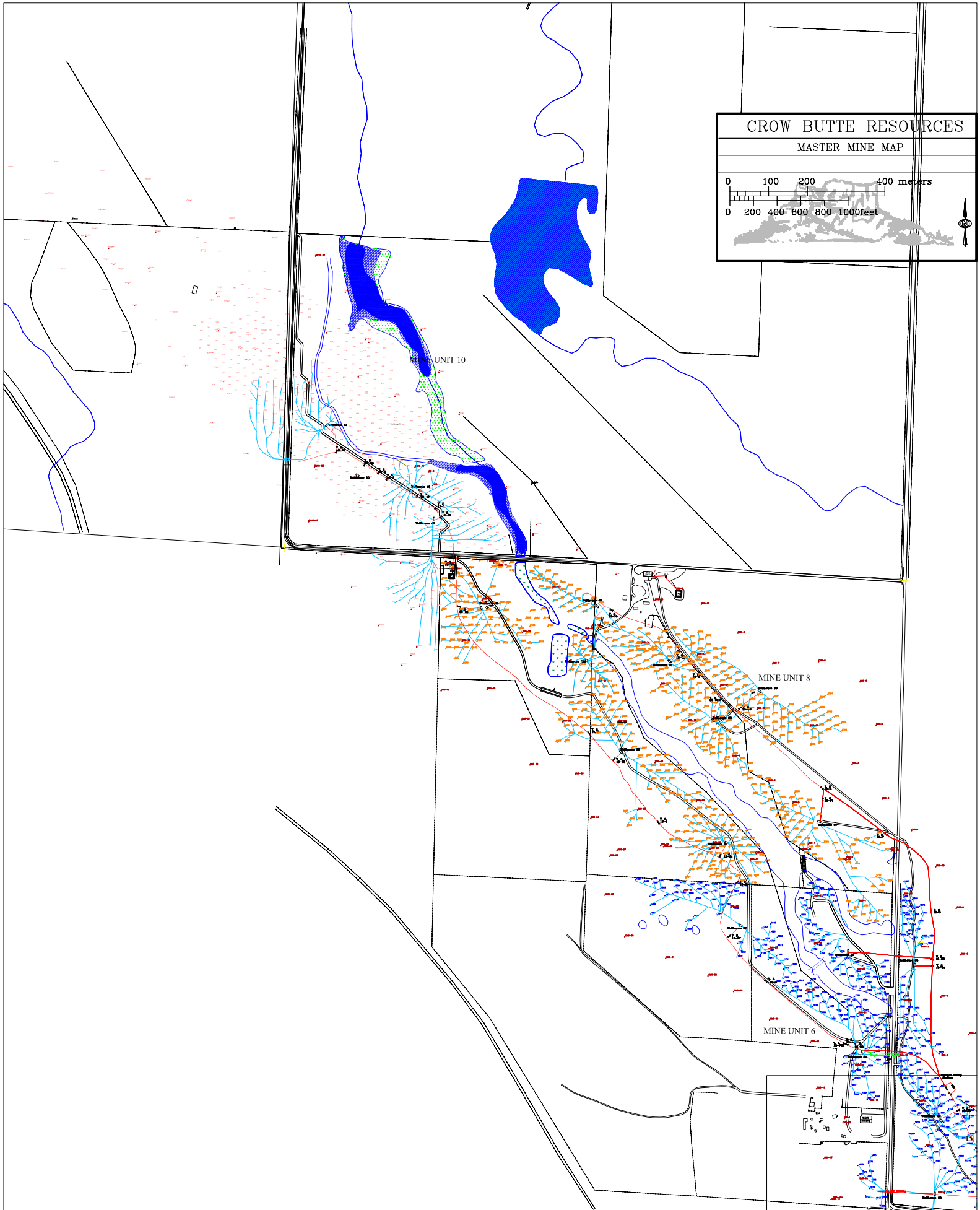
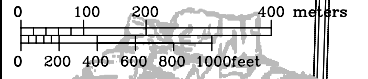
<b>Files</b>	<b>Size</b>	<b>Date &amp; Time</b>
MESSAGE	518	7/31/2008 3:33:35 PM
Crow Butte Map North.pdf		2390787
Crow Butte Map South.pdf		2116452

**Options**

**Priority:** Standard  
**Return Notification:** No  
**Reply Requested:** No  
**Sensitivity:** Normal  
**Expiration Date:**  
**Recipients Received:**

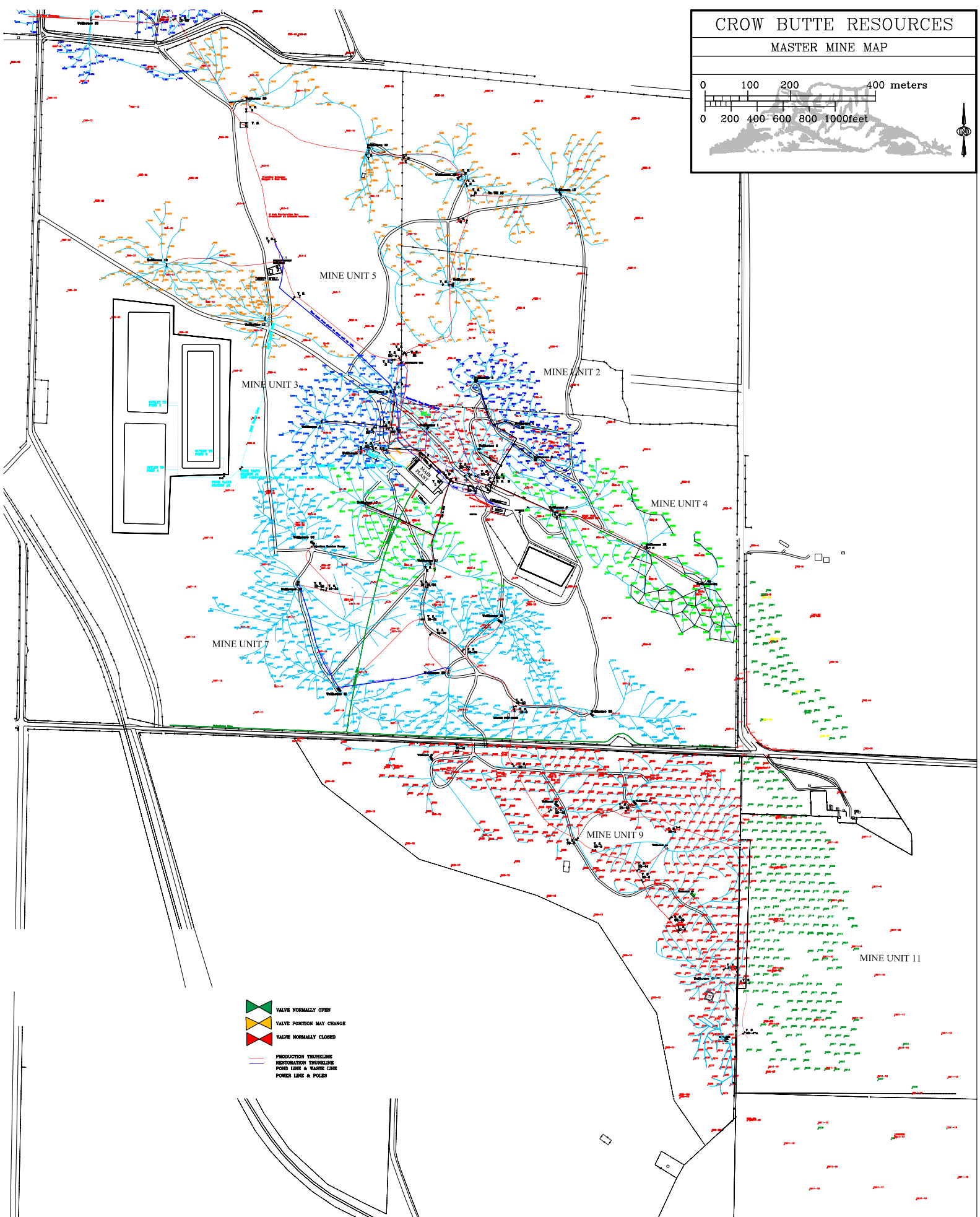
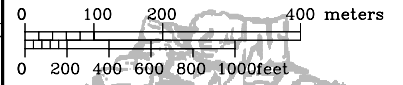
# CROW BUTTE RESOURCES

## MASTER MINE MAP



# CROW BUTTE RESOURCES

## MASTER MINE MAP



- VALVE NORMALLY OPEN
- VALVE POSITION MAY CHANGE
- VALVE NORMALLY CLOSED
- PRODUCTION TRUNKLINE
- RESTORATION TRUNKLINE
- POND LAKE & WASTE LINE
- POWER LINE & POLES