

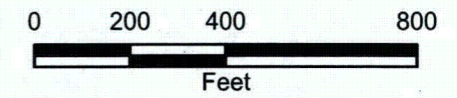


**Legend**

- Monitoring Well
- ▲ Non-Pumping Well
- Pumping Well
- Cell Boundary
- ▬ Property Boundary
- Approximate Eastern Boundary of Zero Saturation
- Groundwater Elevation Contour
- Inferred Groundwater Elevation Contour
- (6906.46) Measured Groundwater Elevation

**Notes:**

1. Groundwater elevation values are displayed in feet above mean sea level.
2. Well names are displayed with black text.
3. Aerial photo taken on August 1, 1996.

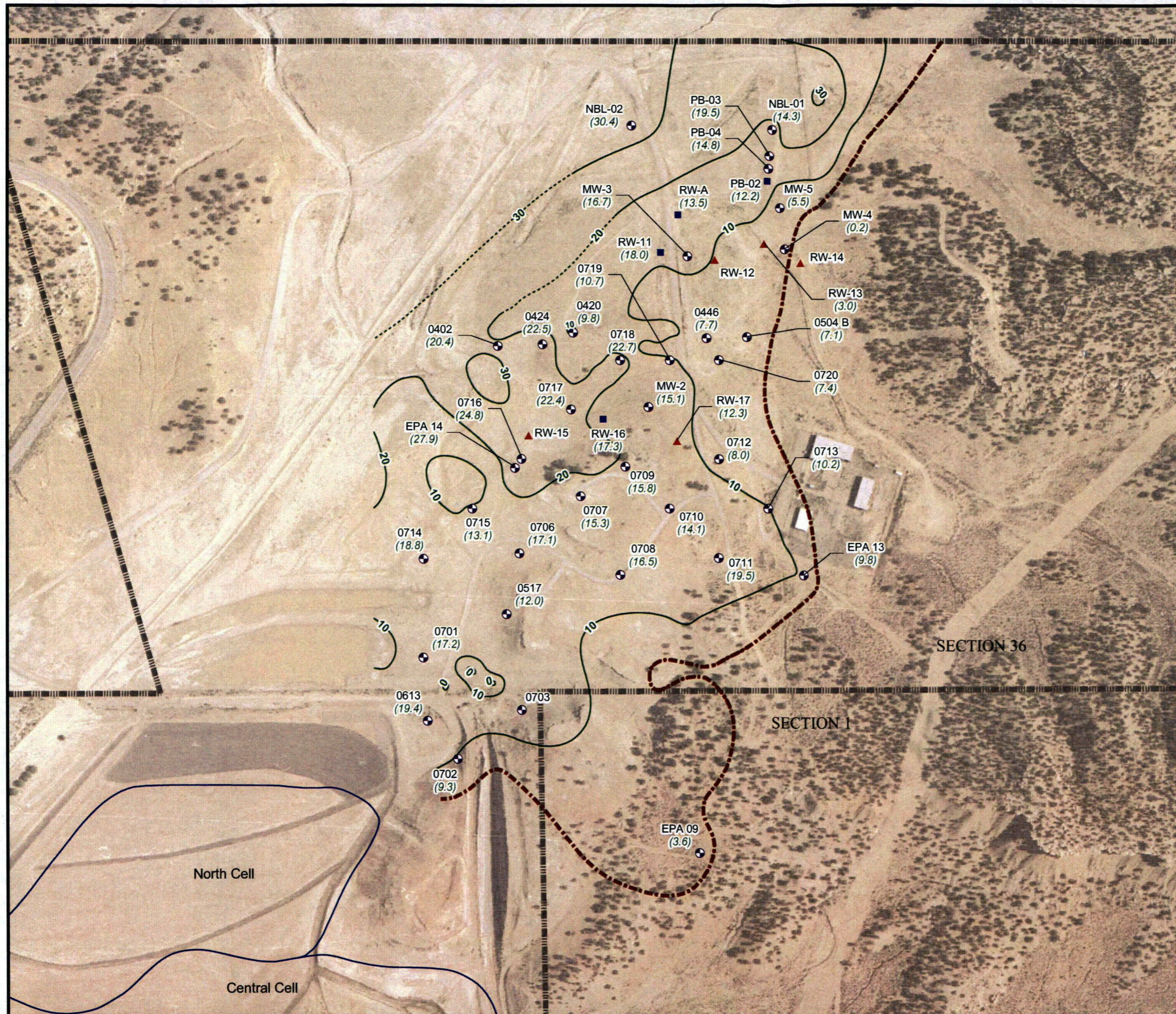


**FIGURE 37**  
 Zone 3 Potentiometric Surface Map  
 October 2008

United Nuclear Corporation Church Rock Site,  
 Church Rock, New Mexico







**Legend**

- Monitoring Well
- ▲ Non-Pumping Well
- Pumping Well
- Saturated Thickness Contour
- - - - - Inferred Saturated Thickness Contour
- - - - - Approximate Eastern Boundary of Zero Saturation
- Cell Boundary
- ▬▬▬▬ Property Boundary
- (3.6) Measured Saturated Thickness

**Notes:**

1. Saturated thickness values shown in feet.
2. Well names are displayed with black text.
3. Aerial photo taken on August 1, 1996.

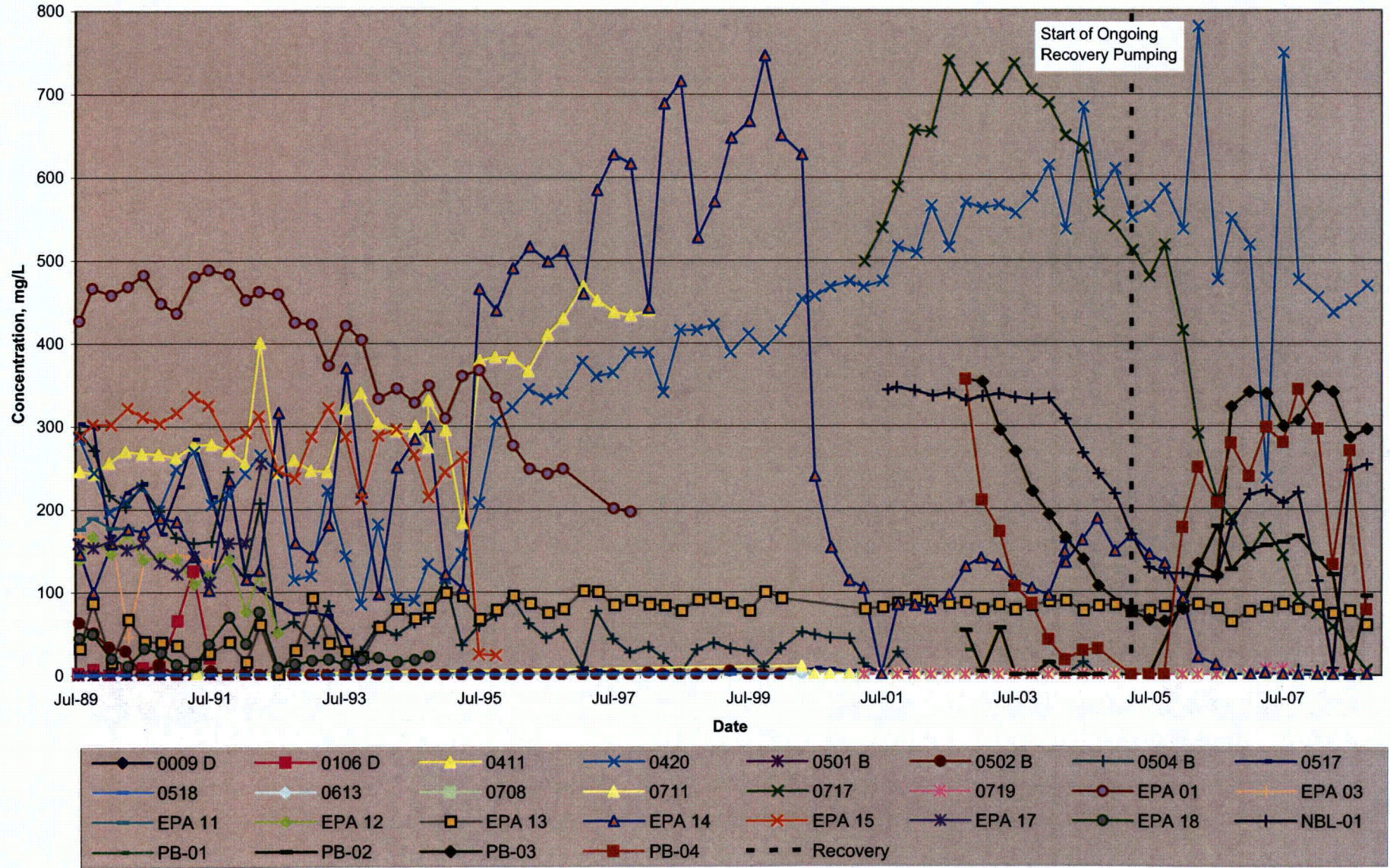
**FIGURE 38**  
 Zone 3 Saturated Thickness Map  
 October 2008

United Nuclear Corporation Church Rock Site,  
 Church Rock, New Mexico



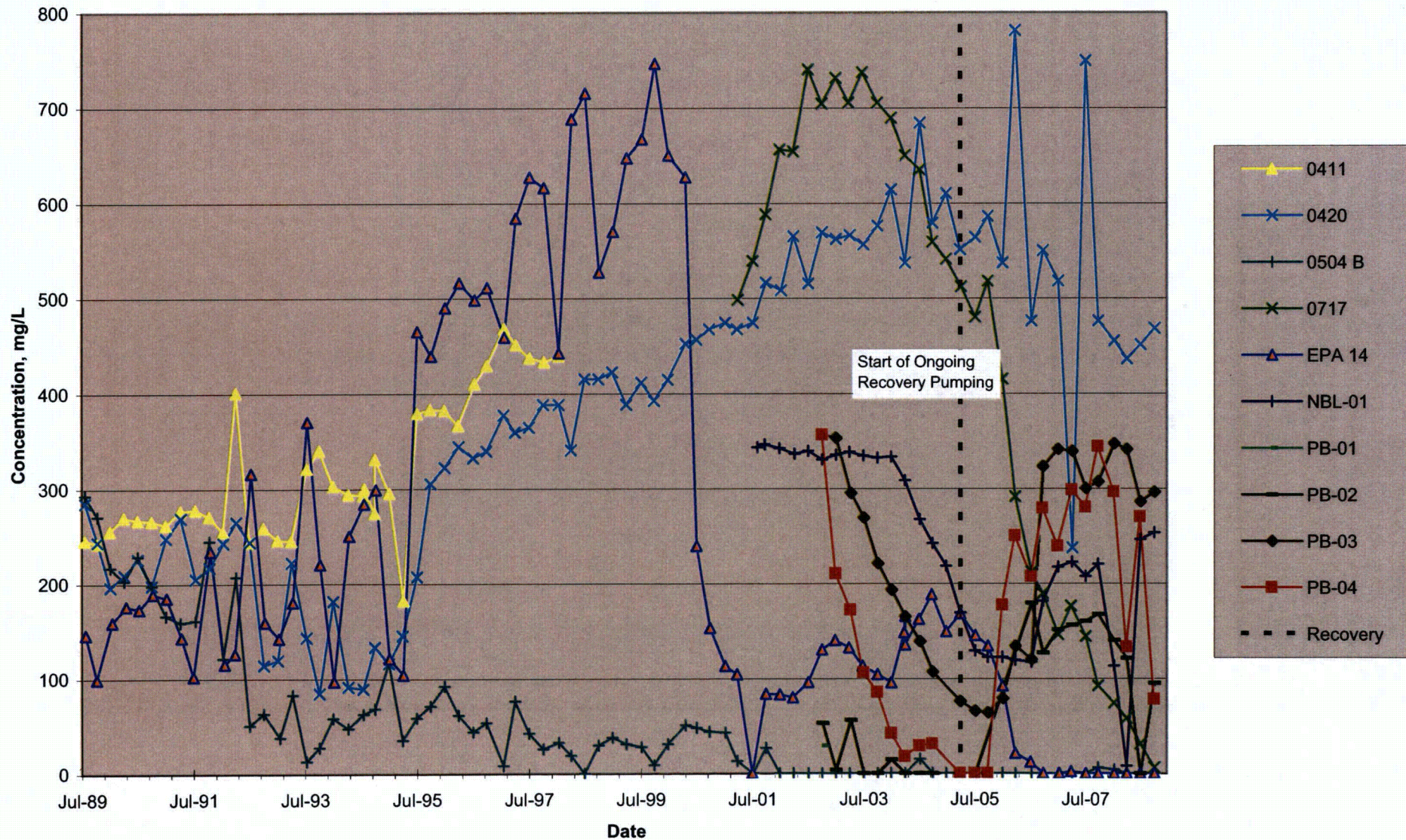


**FIGURE 39**  
 Zone 3 Bicarbonate Concentrations Over Time  
 United Nuclear Corporation, Church Rock Site, Church Rock, New Mexico





**FIGURE 40**  
 Zone 3 Impact Perimeter Bicarbonate Concentrations Over Time  
 United Nuclear Corporation, Church Rock Site, Church Rock, New Mexico





**FIGURE 41**  
Zone 3 Sulfate Concentrations Over Time  
United Nuclear Corporation, Church Rock Site, Church Rock, New Mexico

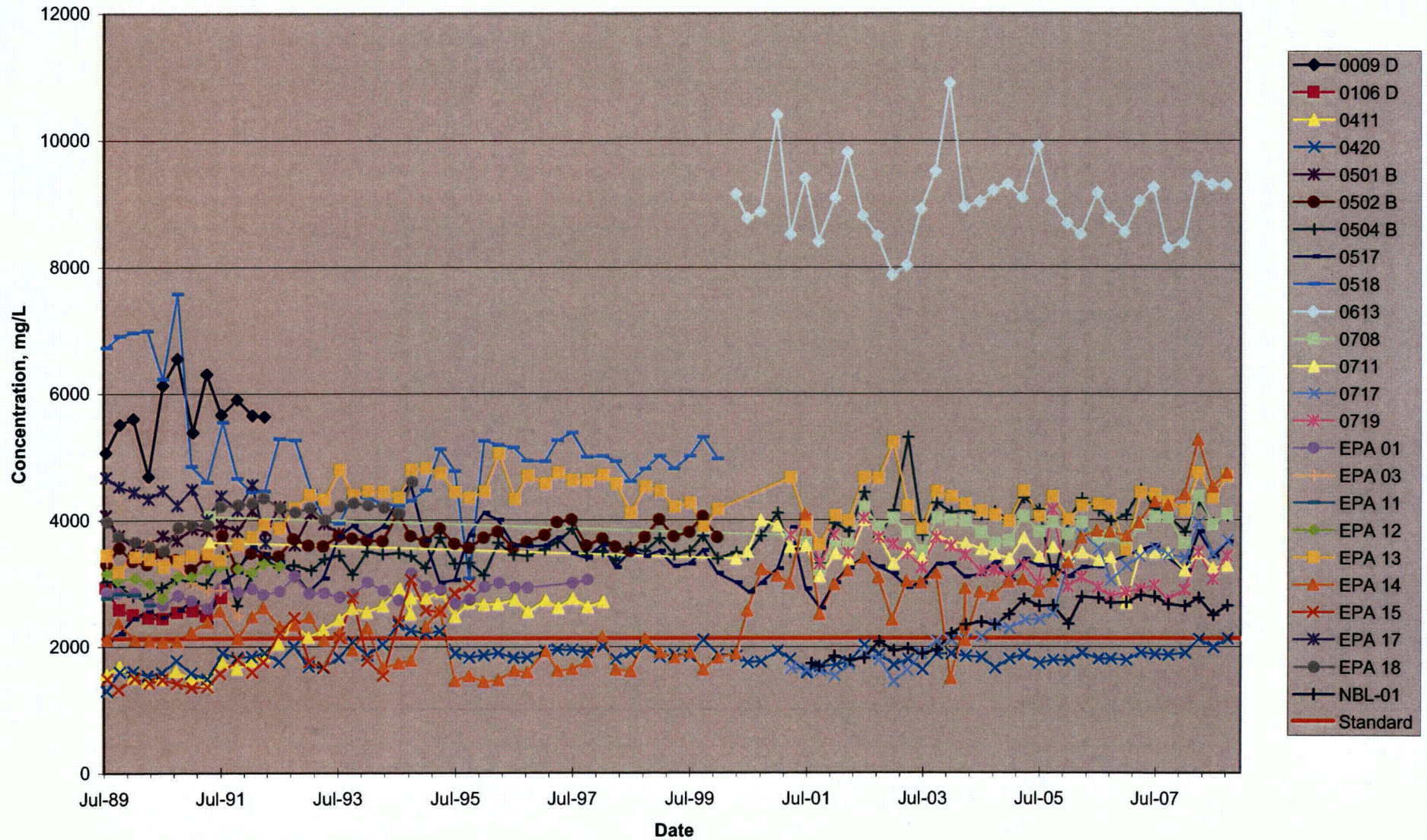
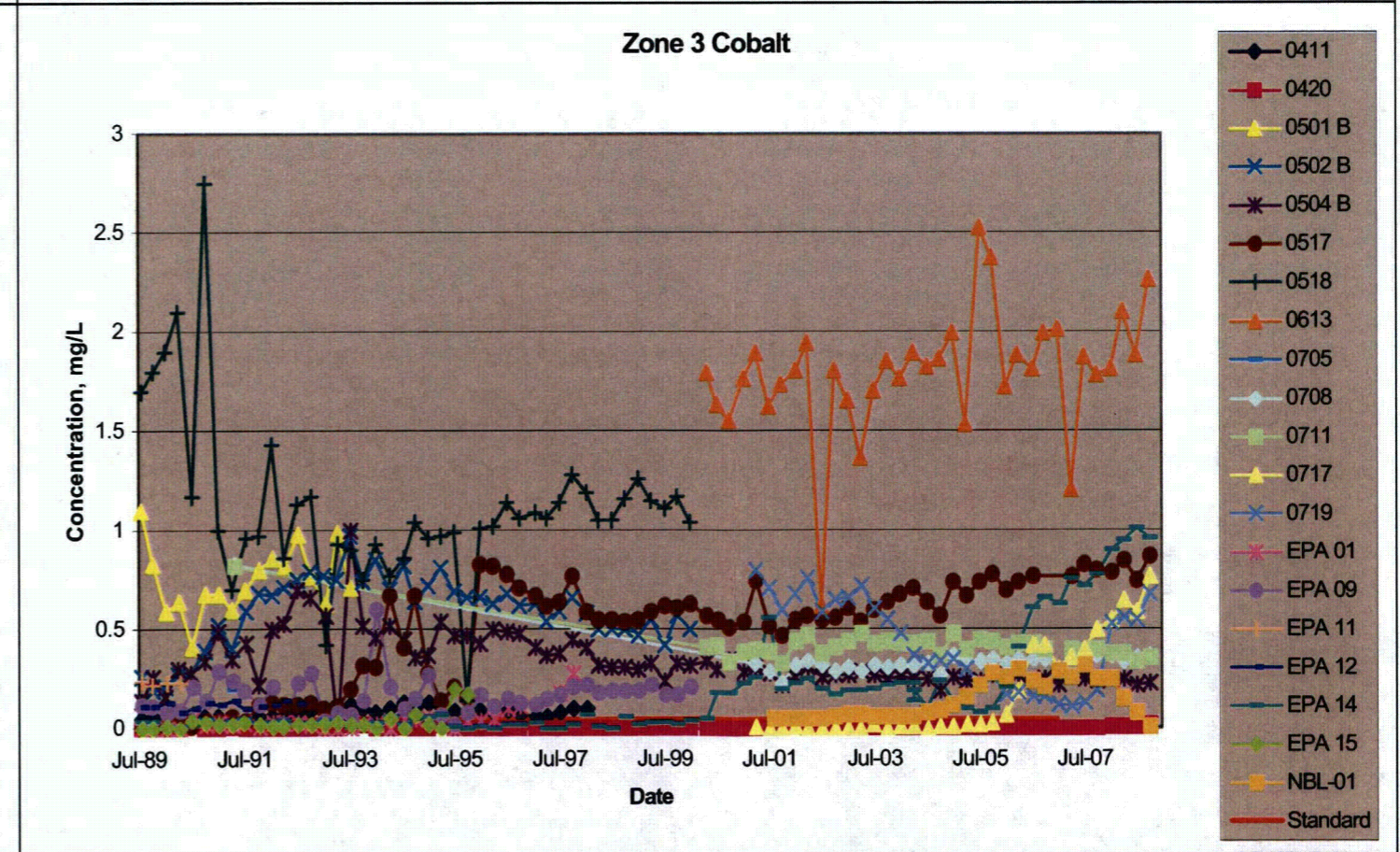
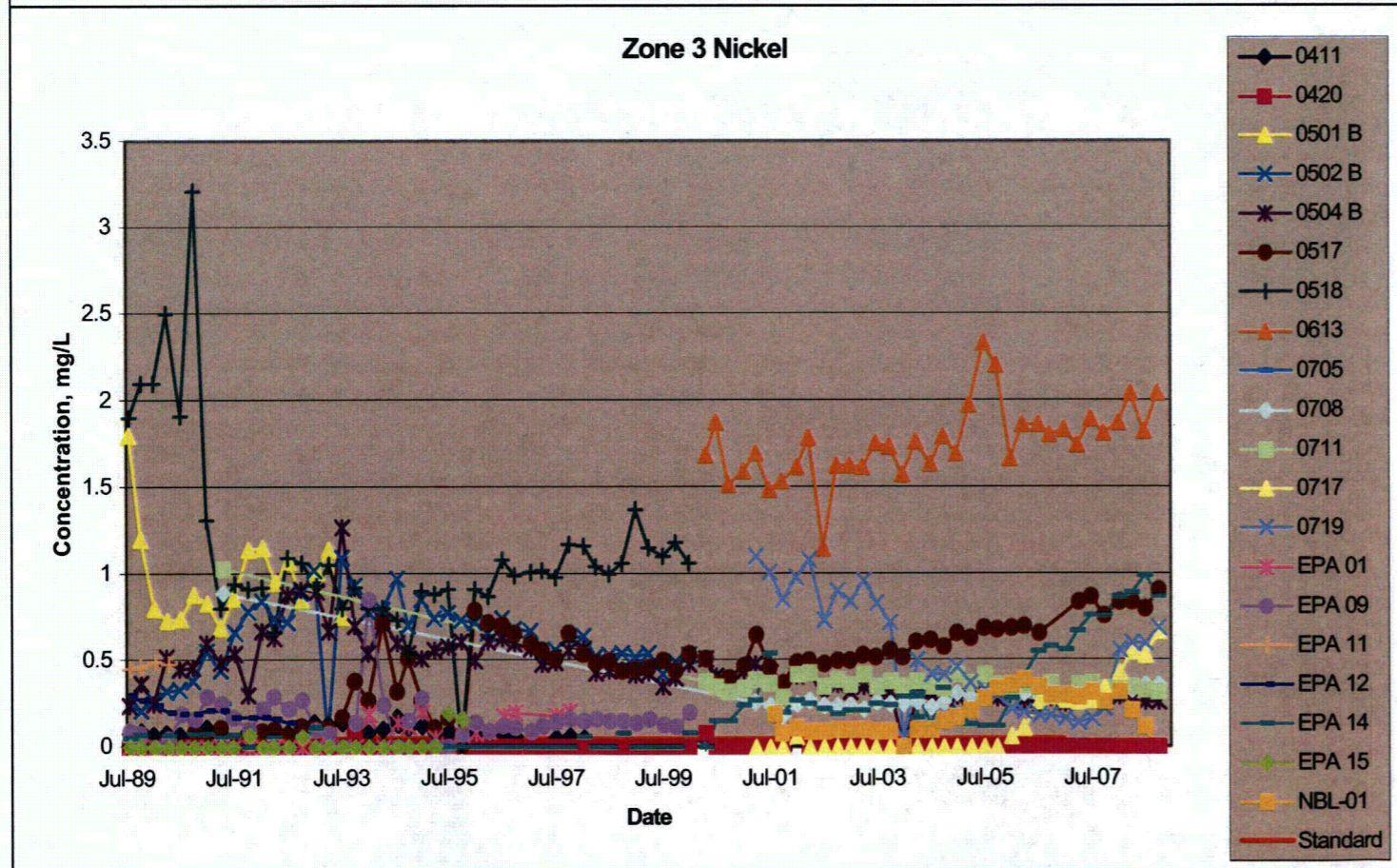
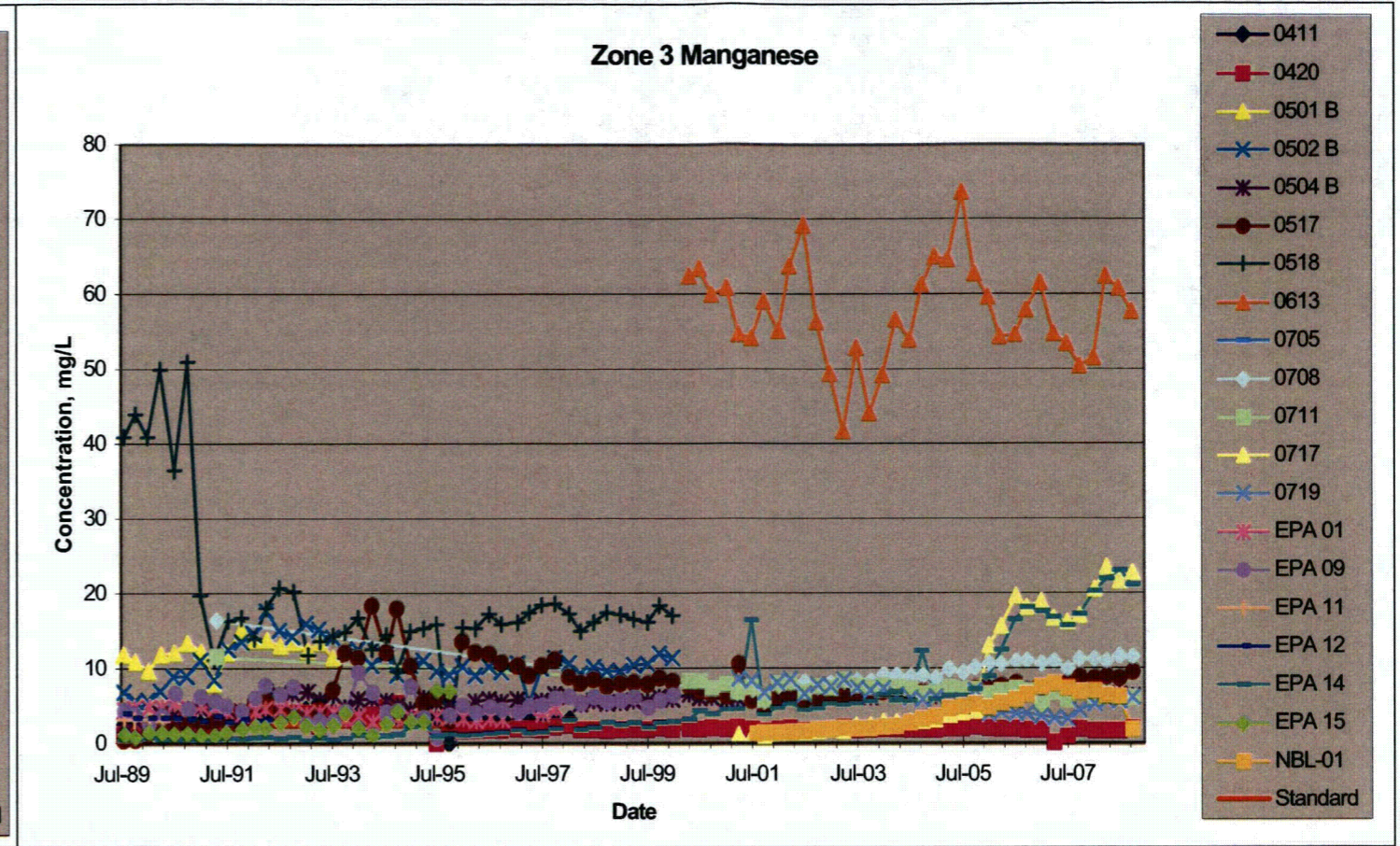
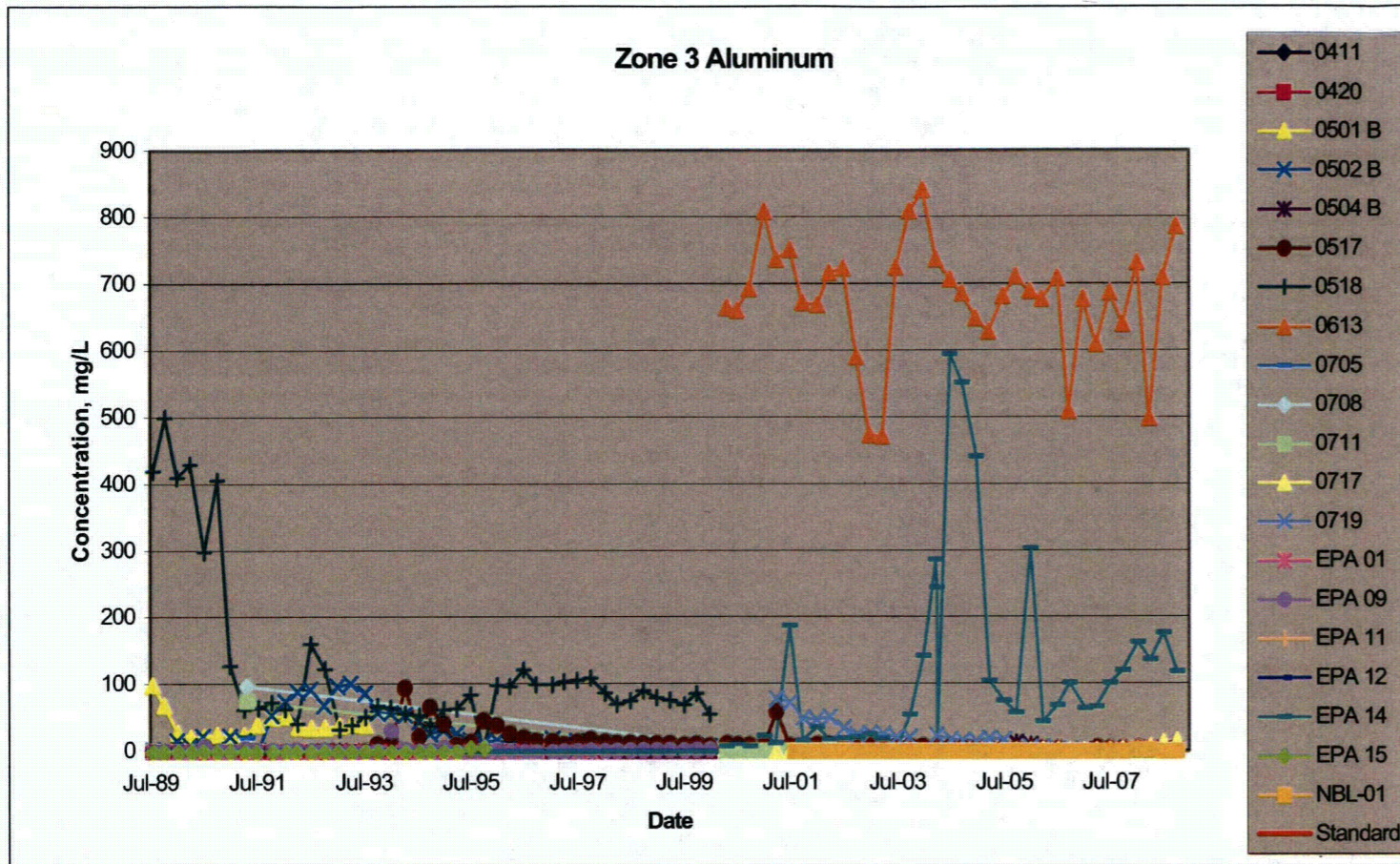




FIGURE 42A

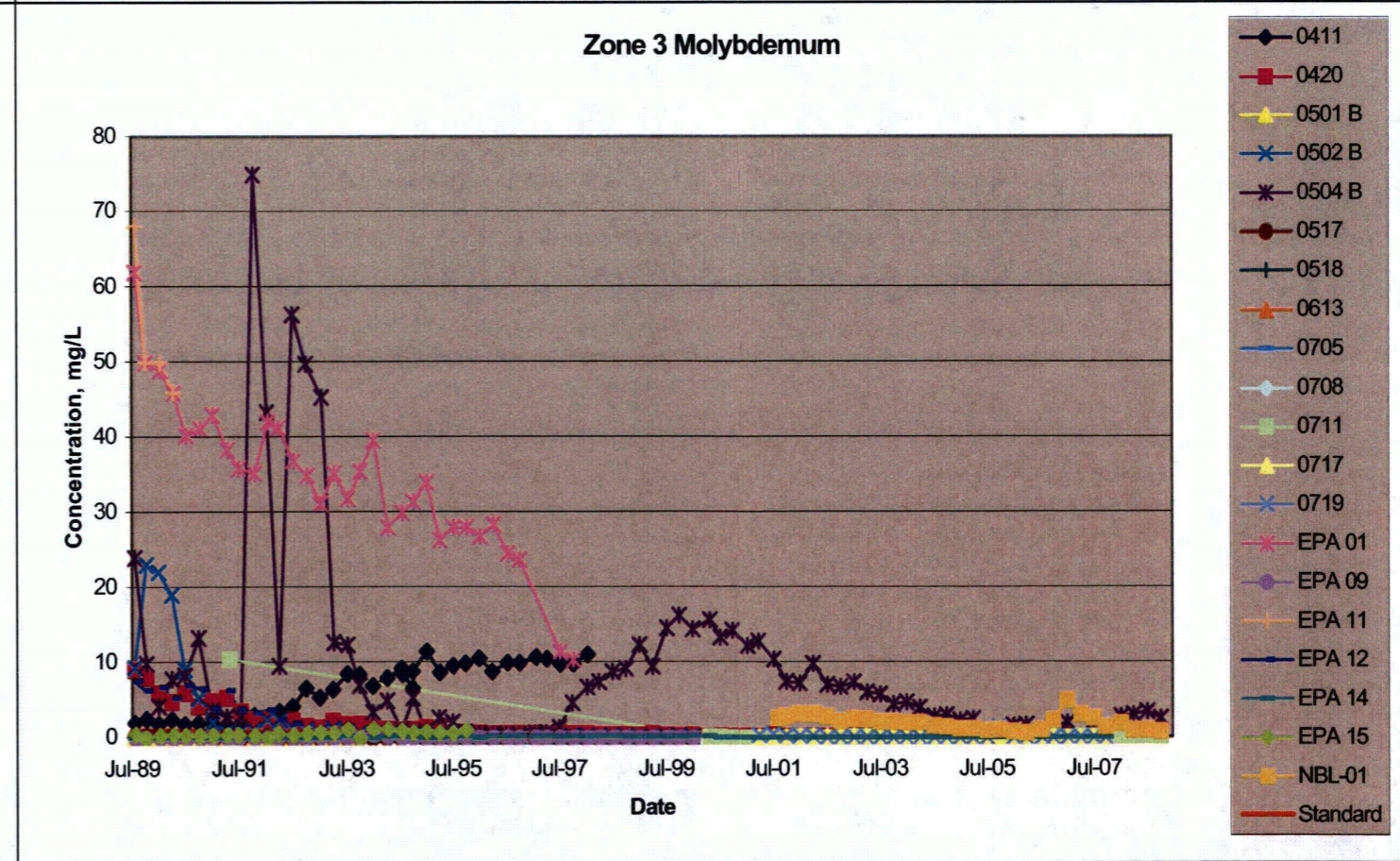
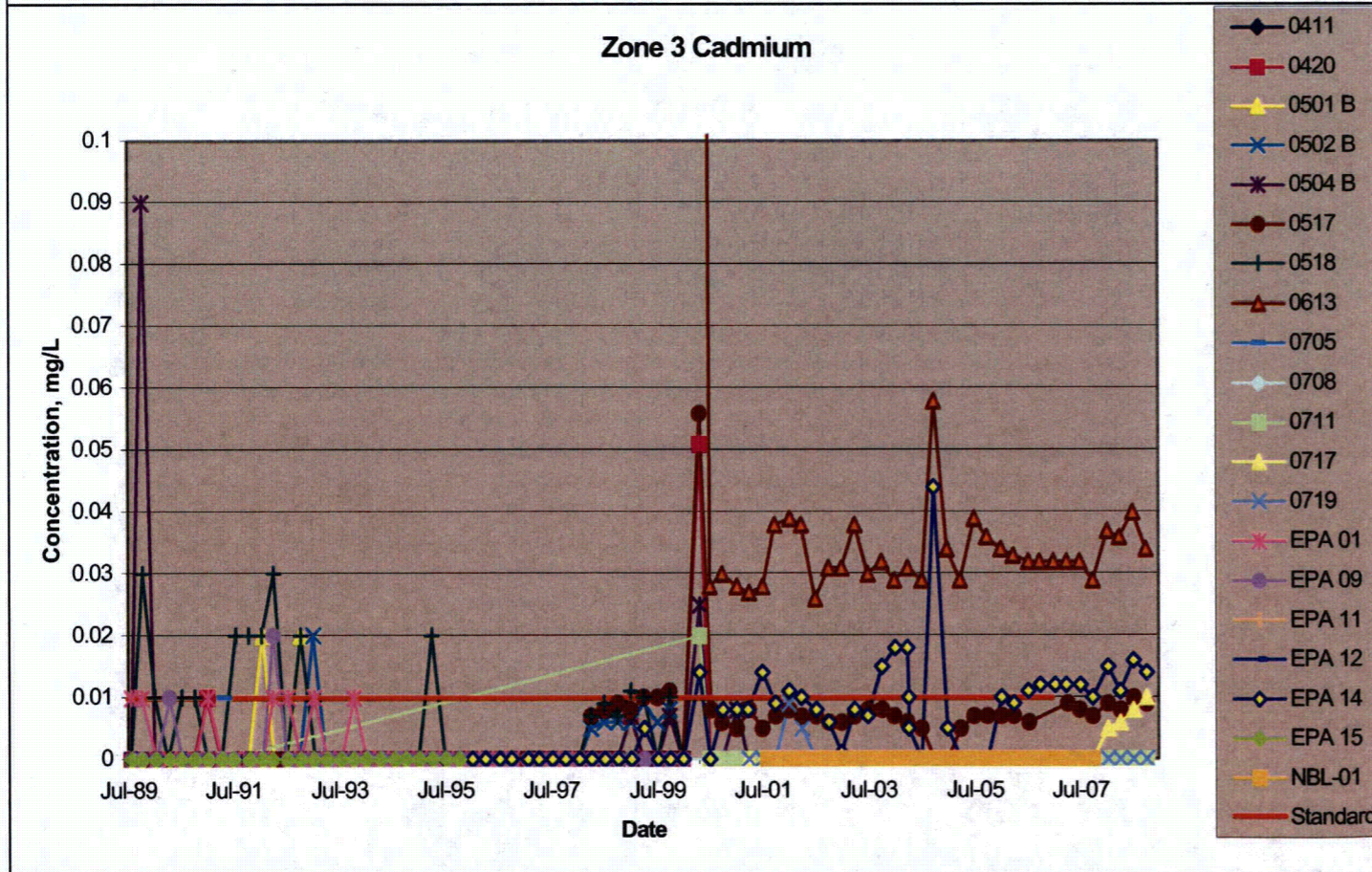
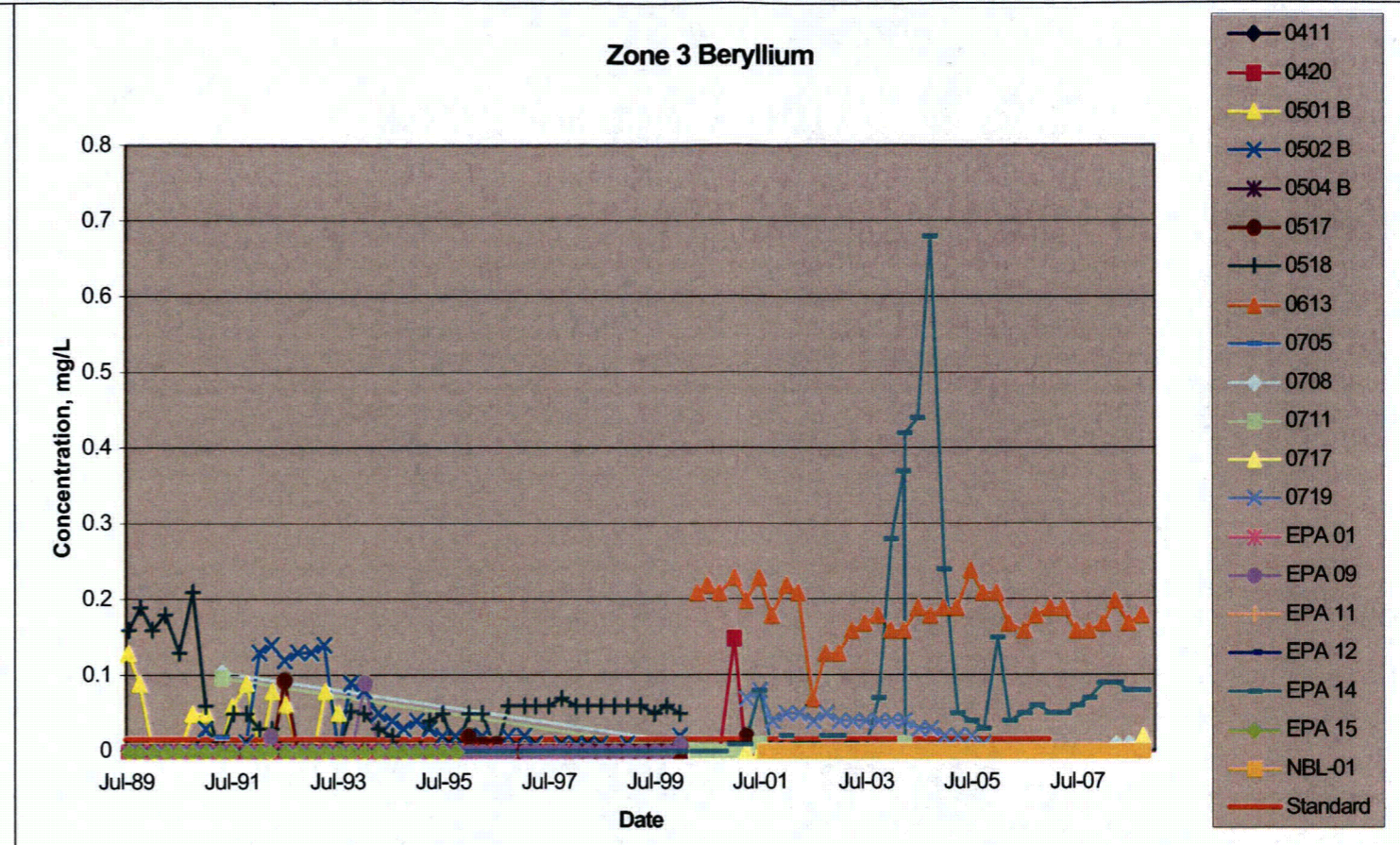
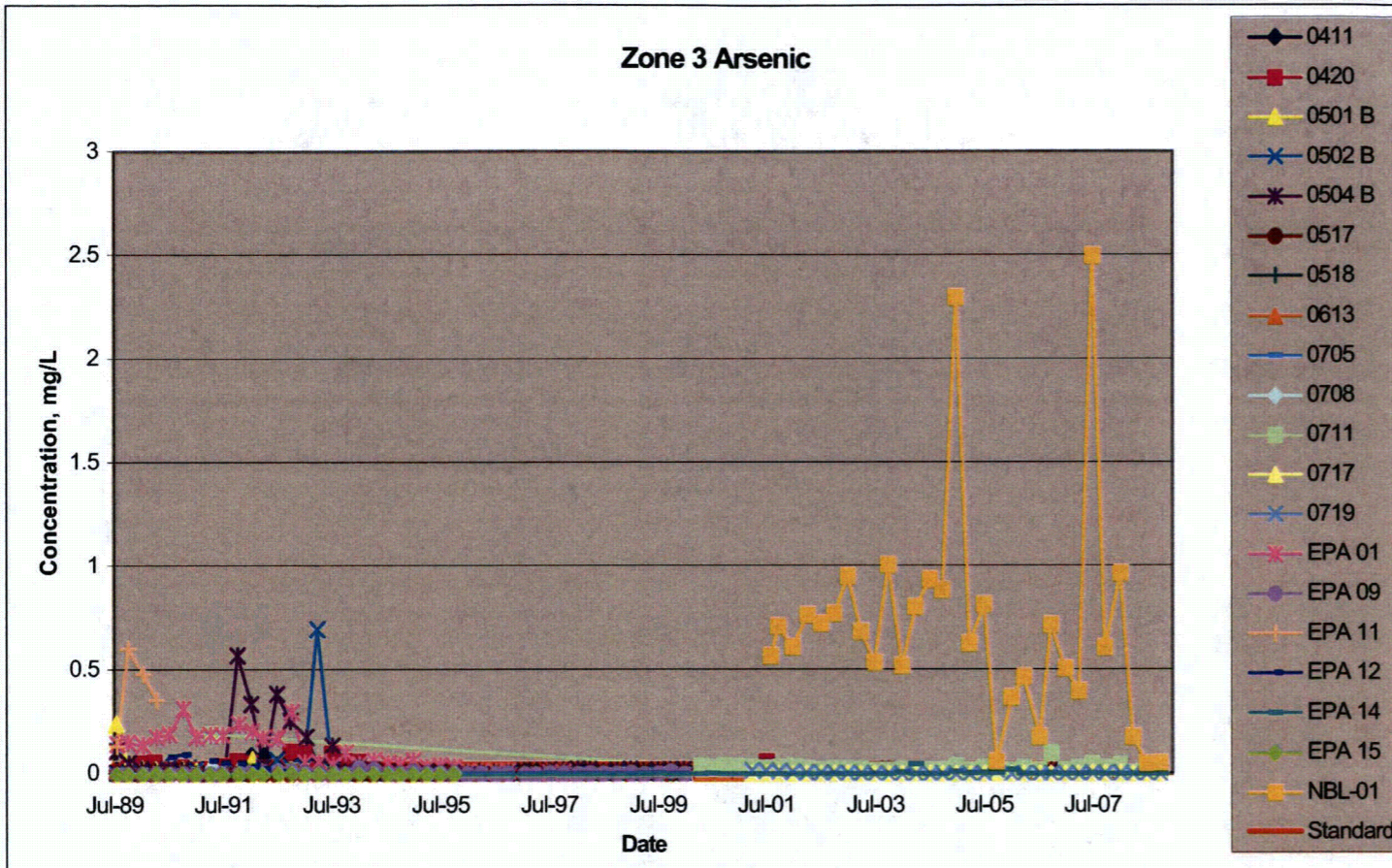
Zone 3 Metals Concentrations over Time

United Nuclear Corporation Church Rock Site, Church Rock, New Mexico

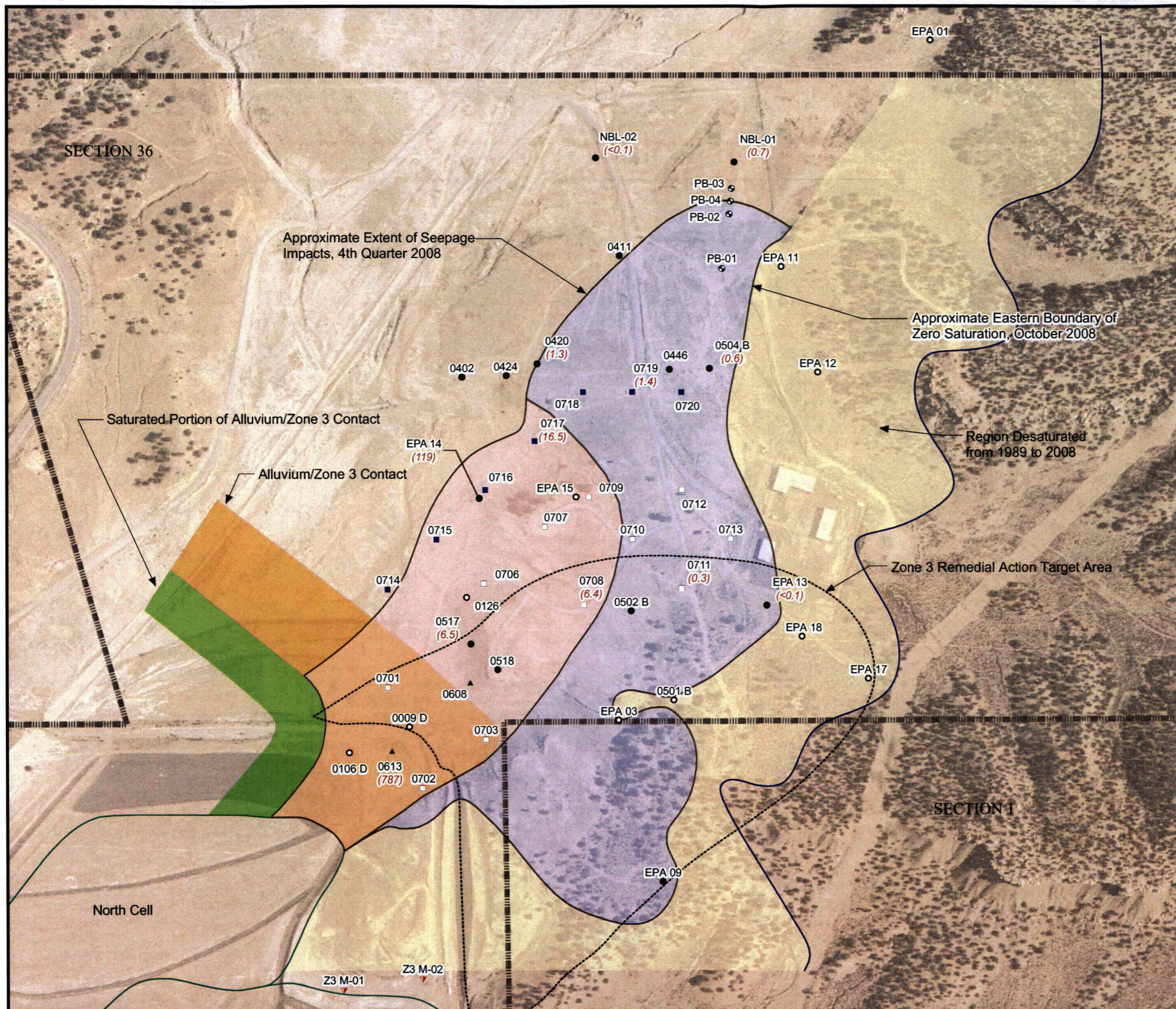




**FIGURE 42B**  
 Zone 3 Metals Concentrations over Time  
 United Nuclear Corporation Church Rock Site, Church Rock, New Mexico







**Legend**

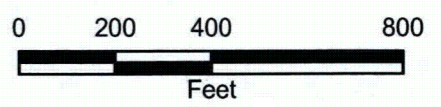
- ▬▬▬▬▬ Property Boundary
- Zone 3 Target Remedial Action Area
- Section Boundary
- Cell Boundary

**Well Type**

- Monitoring
- Dry Monitoring
- Stage I Extraction
- Stage II Extraction
- ⊕ Plume Boundary
- ▲ Northeast Pump-Back
- ▼ Piezometer
- Approximate Extent of Aluminum Exceeding 5.0 mg/L
- Approximate Area Impacted By Tailings Seepage
- (3.4) Aluminum values in mg/L

**Notes:**

1. Well names are displayed with black text.
2. Aerial photo taken on August 1, 1996.



**FIGURE 43**

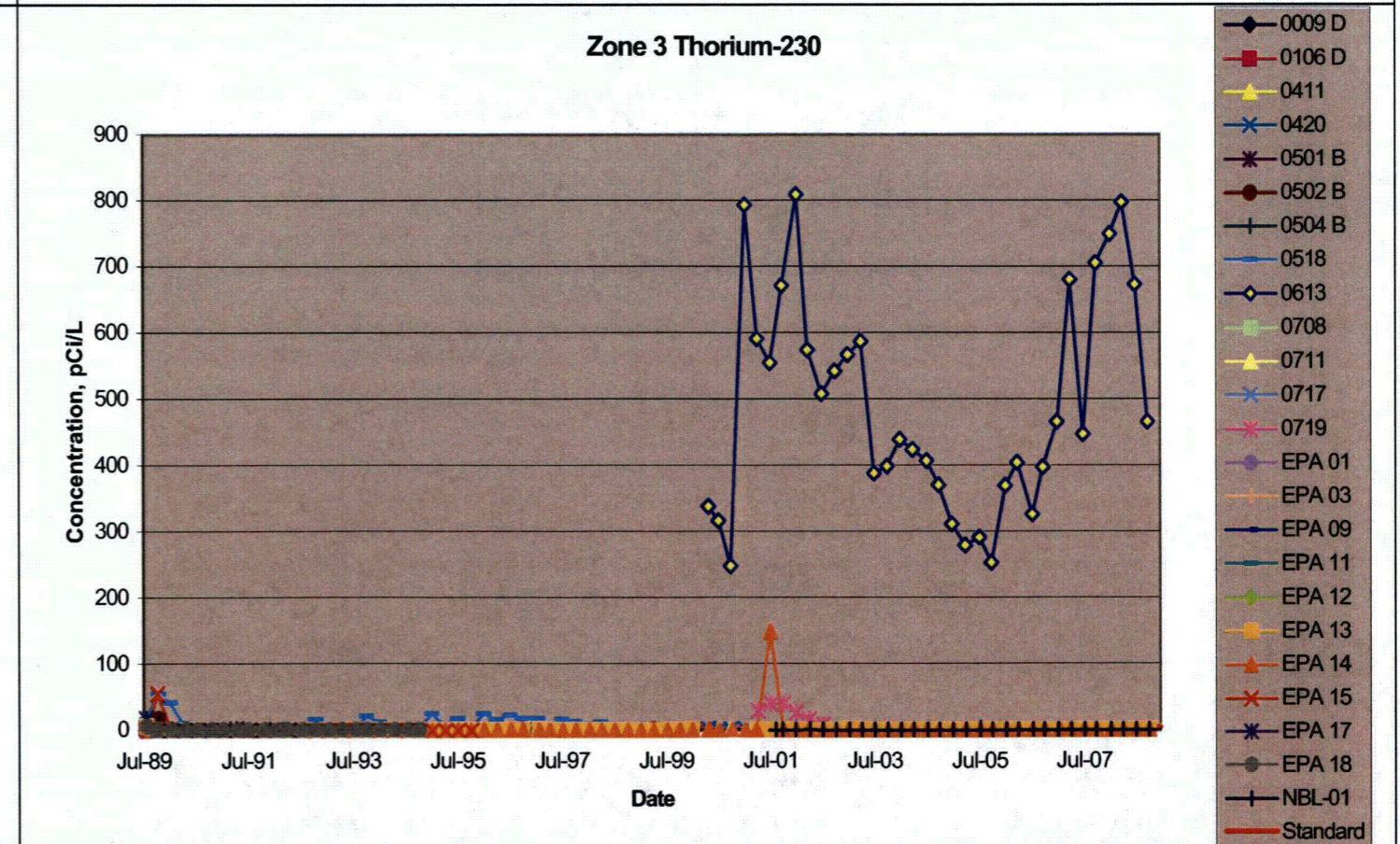
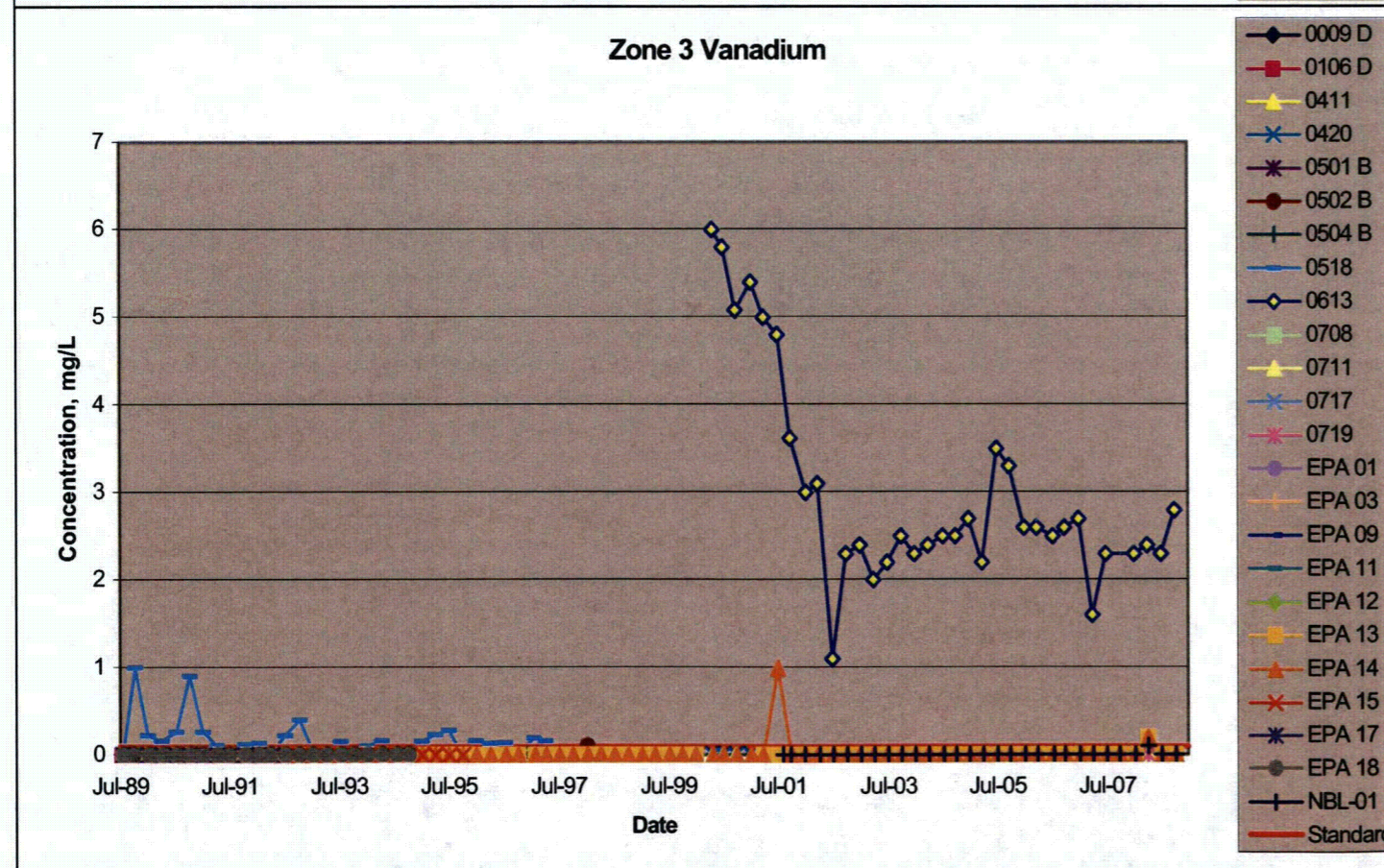
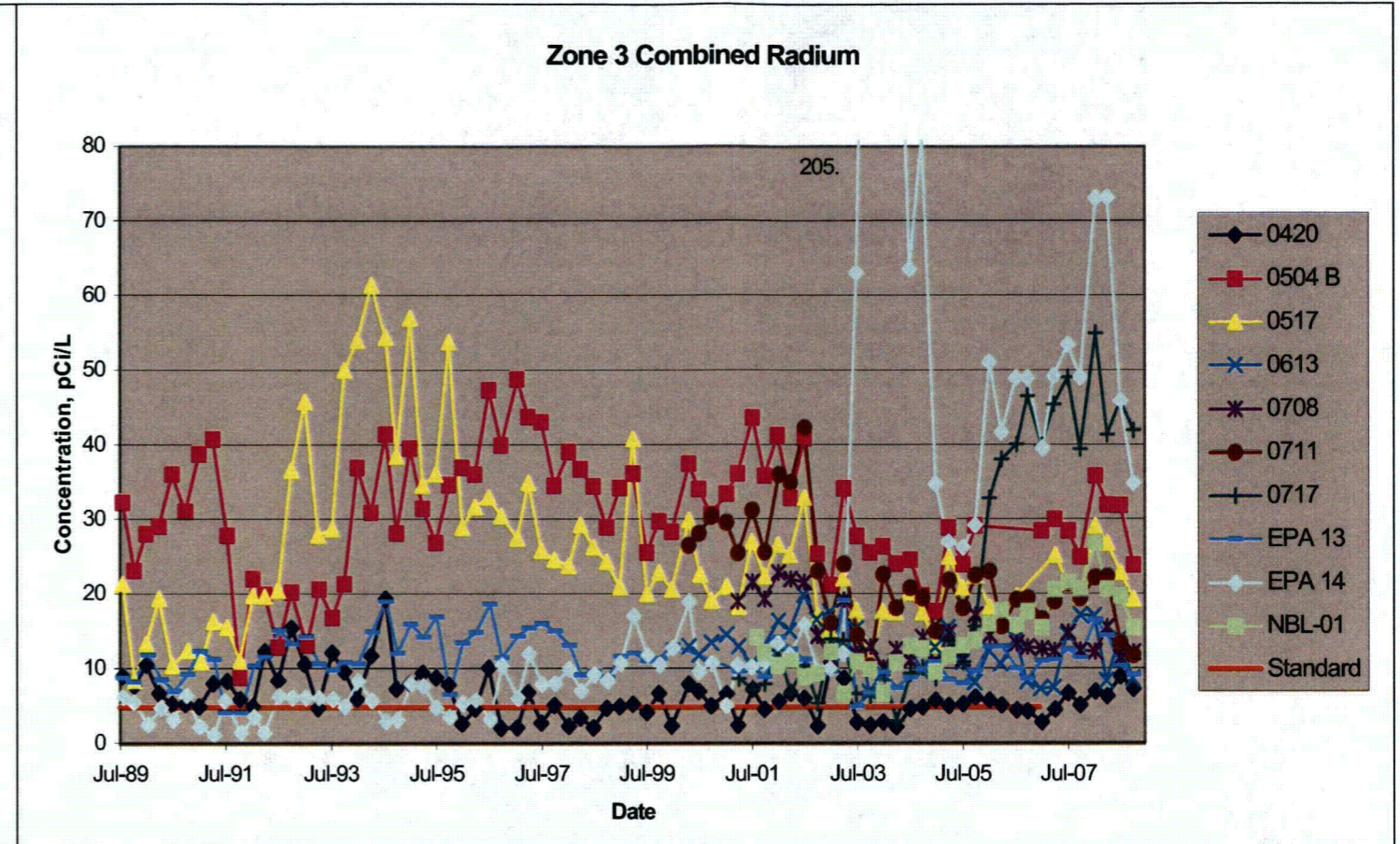
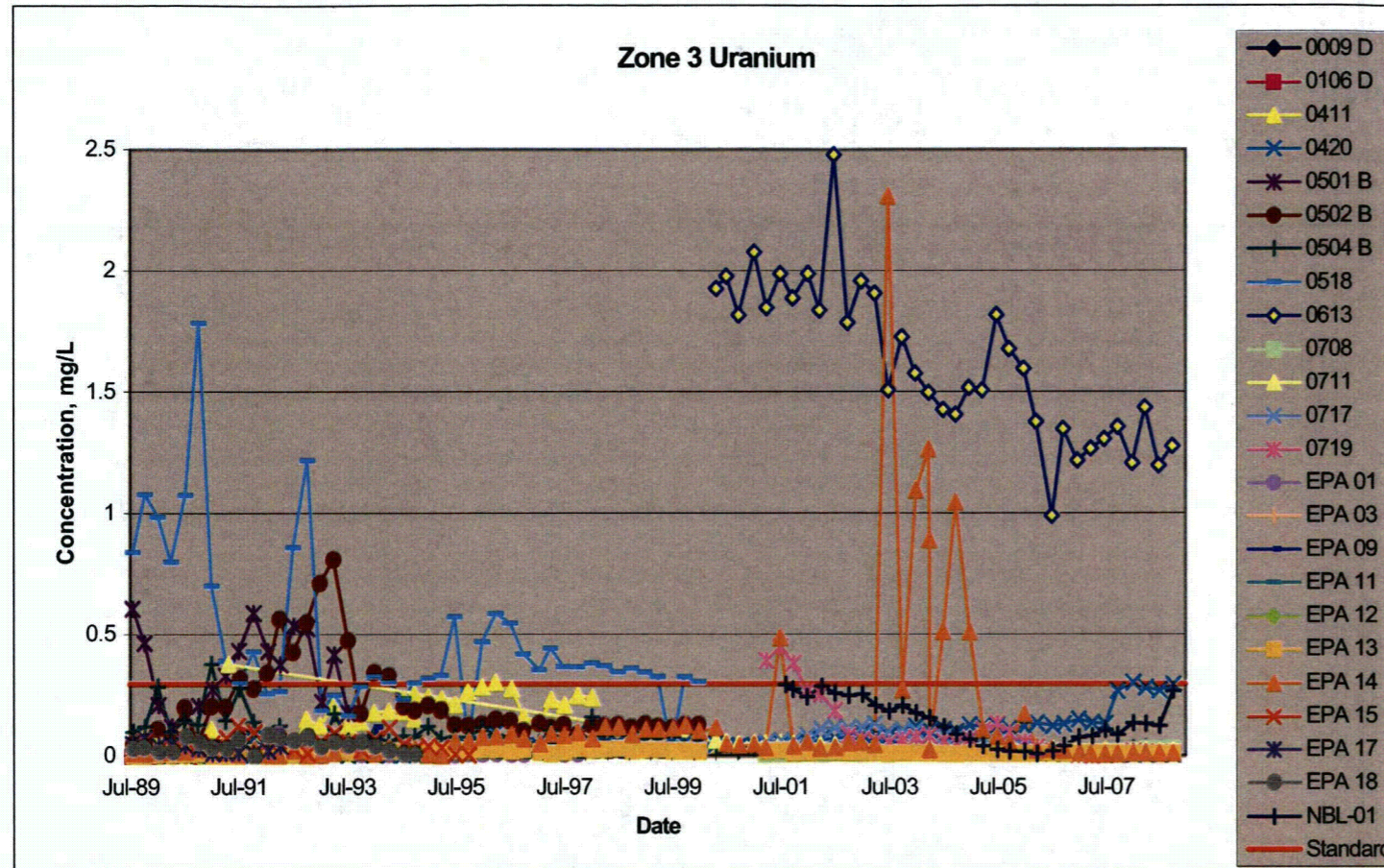
Zone 3 Approximate Extent of Aluminum Exceeding 5.0 mg/L, October 2008

United Nuclear Corporation Church Rock Site, Church Rock, New Mexico



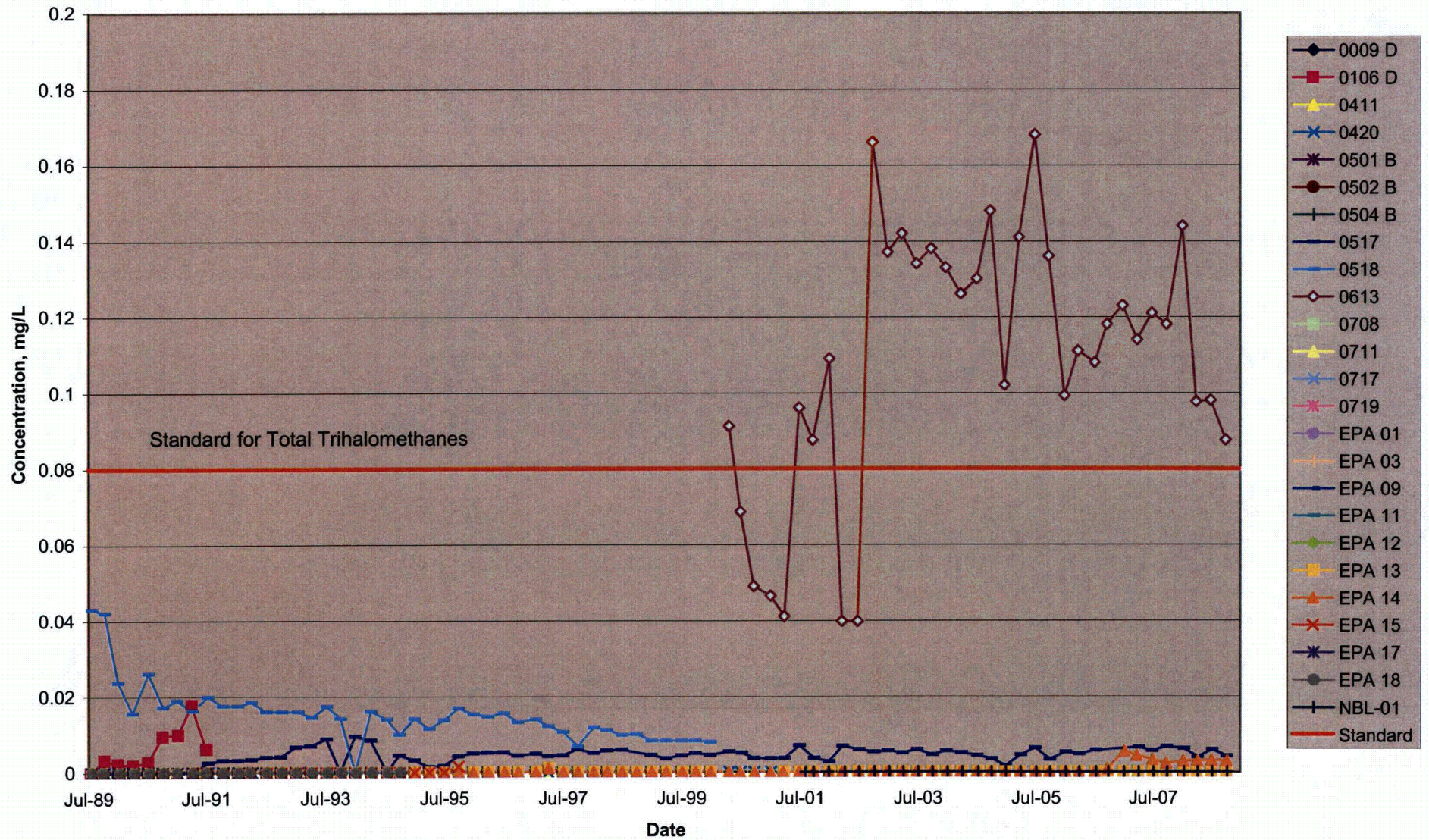


**FIGURE 44**  
 Zone 3 Uranium, Vanadium, and Radionuclides Concentrations over Time  
 United Nuclear Corporation Church Rock Site, Church Rock, New Mexico





**FIGURE 45**  
 Zone 3 Chloroform Concentrations Over Time  
 United Nuclear Corporation, Church Rock Site, Church Rock, New Mexico





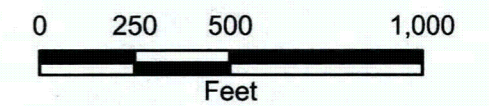


**Legend**

- Zone 1 Monitoring Well
- Groundwater Elevation Contour
- - - - - Inferred Groundwater Elevation Contour
- Cell Boundary
- ▬▬▬▬ Property Boundary

**Notes:**

1. Groundwater elevation values are displayed in feet above mean sea level.
2. Well names are displayed with black text.
3. Groundwater elevations are shown with blue text and enclosed in parentheses.
4. Aerial photo taken on August 1, 1996.



**FIGURE 46**

**Zone 1 Potentiometric Surface Map  
October 2008**

United Nuclear Corporation Church Rock Site,  
Church Rock, New Mexico





**FIGURE 47**  
 Zone 1 Water Levels Over Time  
 United Nuclear Corporation, Church Rock Site, Church Rock, New Mexico

