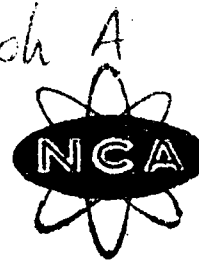


NUCLEONIC CORPORATION OF AMERICA

196 DEGRAW STREET, BROOKLYN 31, N. Y. • MAIN 4-7370



CABE: NUC

exh A  
Dec. 1, 1959

Mr. T. B. Klevin  
Inspection Division  
U. S. A. E. C., N. Y. Operations Office  
376 Hudson St.  
New York City, N. Y.

Information in this record was deleted  
in accordance with the Freedom of Information  
Act, exemptions 6  
FOIA-2008-0314

Dear Mr. Klevin:

this letter is in regard to our conversation of  
today with respect to Engelhard Industries dosimeter  
film (b)(6) monitoring period 10-19-59 to 10-31-59. Ex

this film was reported exposed to 2.3r of gamma and  
400 mrad of beta, although no other clip-on film shows  
a large gamma exposure. the wrist film (b)(6) Ex 6  
worn by

this person over the same period showed an exposure of  
1.9r of gamma and 1.5r of beta. since the appearance  
of the film (both clip and wrist) show the existence  
of gamma exposures, and since film (b)(6) has had  
gamma exposures in recent periods, the chance that  
these film were damaged is slight.

I am enclosing film (b)(6) and wrist film (b)(6) which  
are pure beta exposures - for comparison.

H/22

Handwritten initials or signature

**NUCLEONIC CORPORATION OF AMERICA**

196 DEGRAW STREET, BROOKLYN 31, N. Y. MAIN 4-7370



CABLE: NUCLE

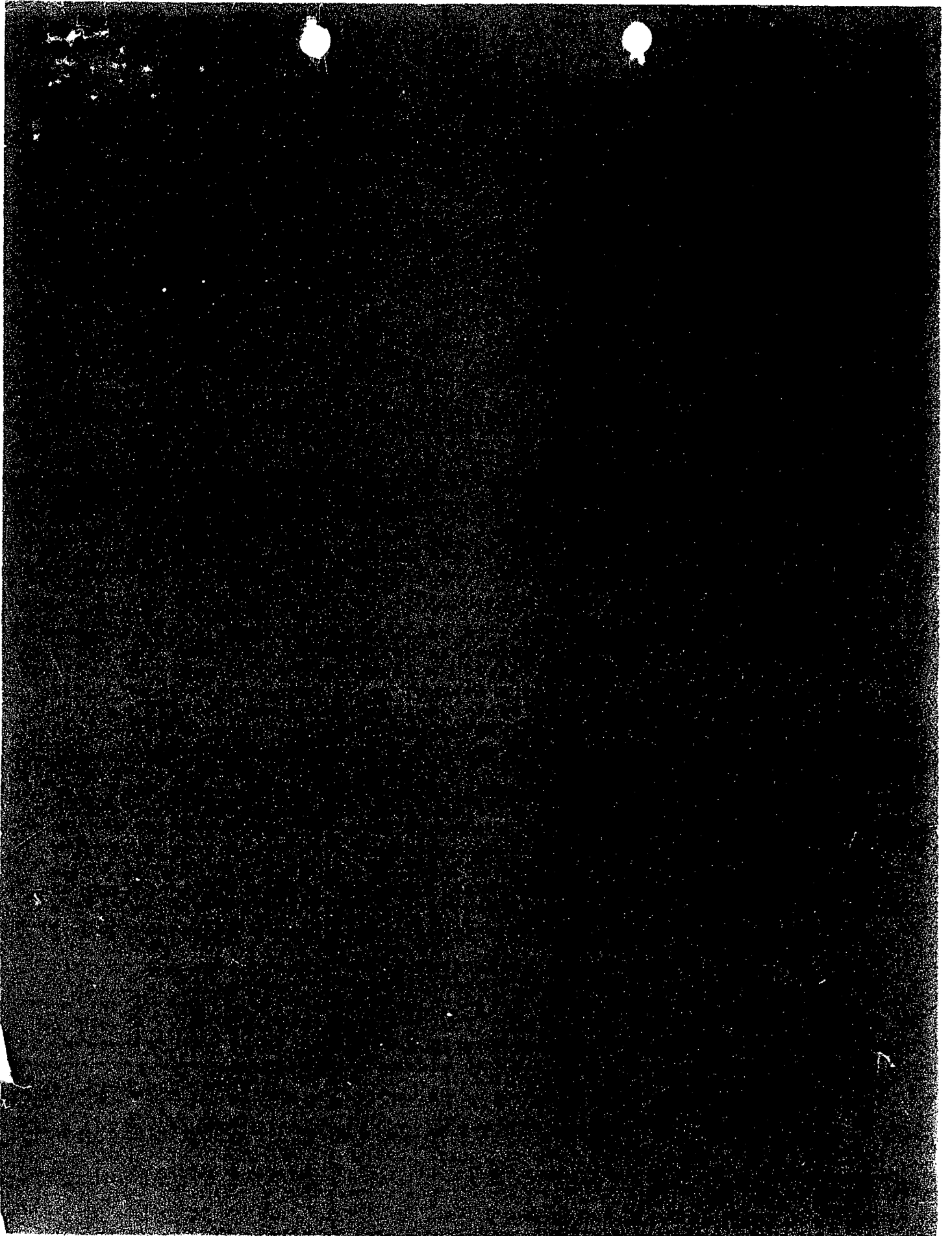
The densities of the enclosed film are as follows:

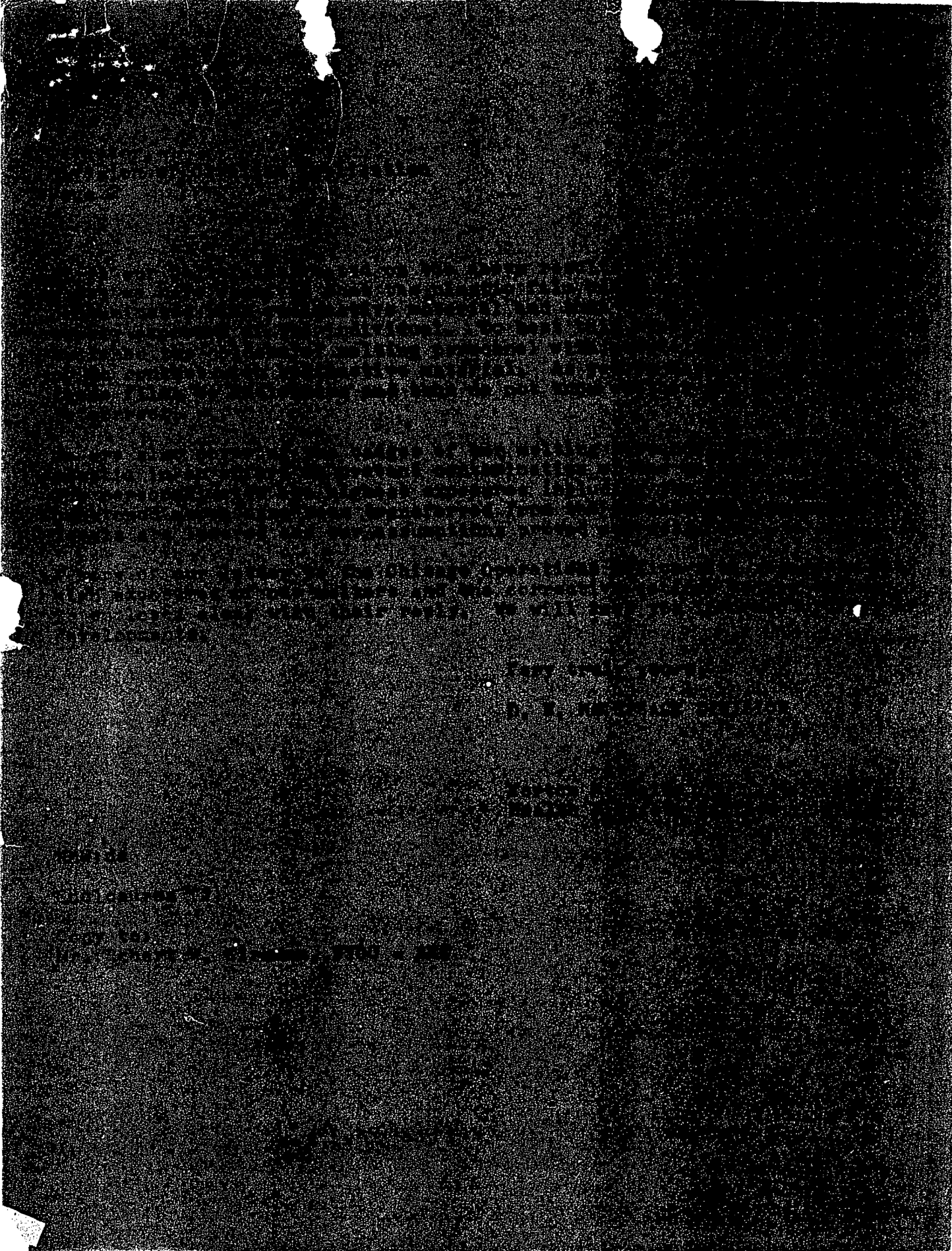
Film  
(b)(6)

Densities	.008" Cu		.024" Cu		Pb	Exposure (hr)	
	beta (min)	gamma	beta (min)	gamma		beta (min)	gamma
1.36					0.170	2.1r	0
2.30	1.93		1.59		1.63	2.3r	
1.38	0.380		0.200		0.150	2.4r	0
2.70	2.22		1.45		1.49	1.5r	1.9r

Do not hesitate to call on me if I can be of any further assistance.

Sincerely Yours,  
Jacob Almit





1. The first source of radiation is the uranium ore itself. The ore is mined and then processed into a form suitable for use in a reactor. The ore is then transported to the reactor site.

2. The second source of radiation is the fission products. These are the products of the fission of uranium atoms. They are highly radioactive and are released from the reactor core.

An important feature of the radiation is that it is highly penetrating. It can travel long distances through air and water. This makes it a serious hazard to the public and the environment.

The personnel involved have been working in the reactor for many years. They have been exposed to high levels of radiation. This has led to a number of health problems, including cancer and leukemia. The radiation has also caused damage to the environment, particularly to the water supply.

It is our belief that the radiation from the reactor is the main source of the health problems. We are currently conducting research to determine the extent of the radiation exposure. We are also working to develop methods for reducing the radiation levels.

In addition, we are setting up a system of monitoring the radiation levels. This will allow us to detect any changes in the radiation levels and to take action if necessary. We are also working to improve the safety of the reactor.

Another source of radiation is the release of radioactive gases. These gases are released from the reactor core and can be inhaled. They are highly radioactive and can cause serious health problems. We are currently working to reduce the release of these gases. We are also working to improve the ventilation of the reactor building.

THE [illegible] [illegible]

[illegible] [illegible] [illegible]

[illegible] [illegible] [illegible]

[illegible] [illegible] [illegible]

[illegible] [illegible] [illegible]



UNITED STATES  
ATOMIC ENERGY COMMISSION  
DIVERSION OF MATERIALS OFFICE  
WASHINGTON, D. C.

October 11, 1954

Mr. Gordon Wilson  
Box 15 and 26, 1st Floor  
D. F. Haskins Building  
Pine and Jackson Streets  
Northboro, Massachusetts

Dear Gordon:

After reading your letter of September 15, 1954, and considering the situation over the telephone with you, I would like to make a few comments regarding your selling operation.

Personnel Expenses. You indicate that one of your employees received a total back check of about \$100 in three small payments. With the allowable limit of \$50 per quarter (see the Handbook in HRM Handbook 59), this means that this man received half the quarterly limit. This is the case, as a result, his expenses should be reduced. I am sure that in the next few months he will be able to pay the balance. Now, if you have other cases to prevent such payments in the future, by making payments in cash or by making the employee pay the balance of the back check, you should be able to avoid such situations. Considering the fact that you are a small business, it is not wise to have the man pay the balance of the back check in cash. It is better to have the man pay the balance of the back check in cash.

Problems you described in your letter regarding the control of the material are being handled by the Commission. Other firms have had similar problems and have had to pay such amounts as a result.

The undersigned, [Name], of the County of [County], State of [State], do hereby certify that [Text]

[Faded text block containing the main body of the document, likely a certificate or report.]

Very truly yours,



William A. Brown  
Biological Services  
Health and Safety Division

