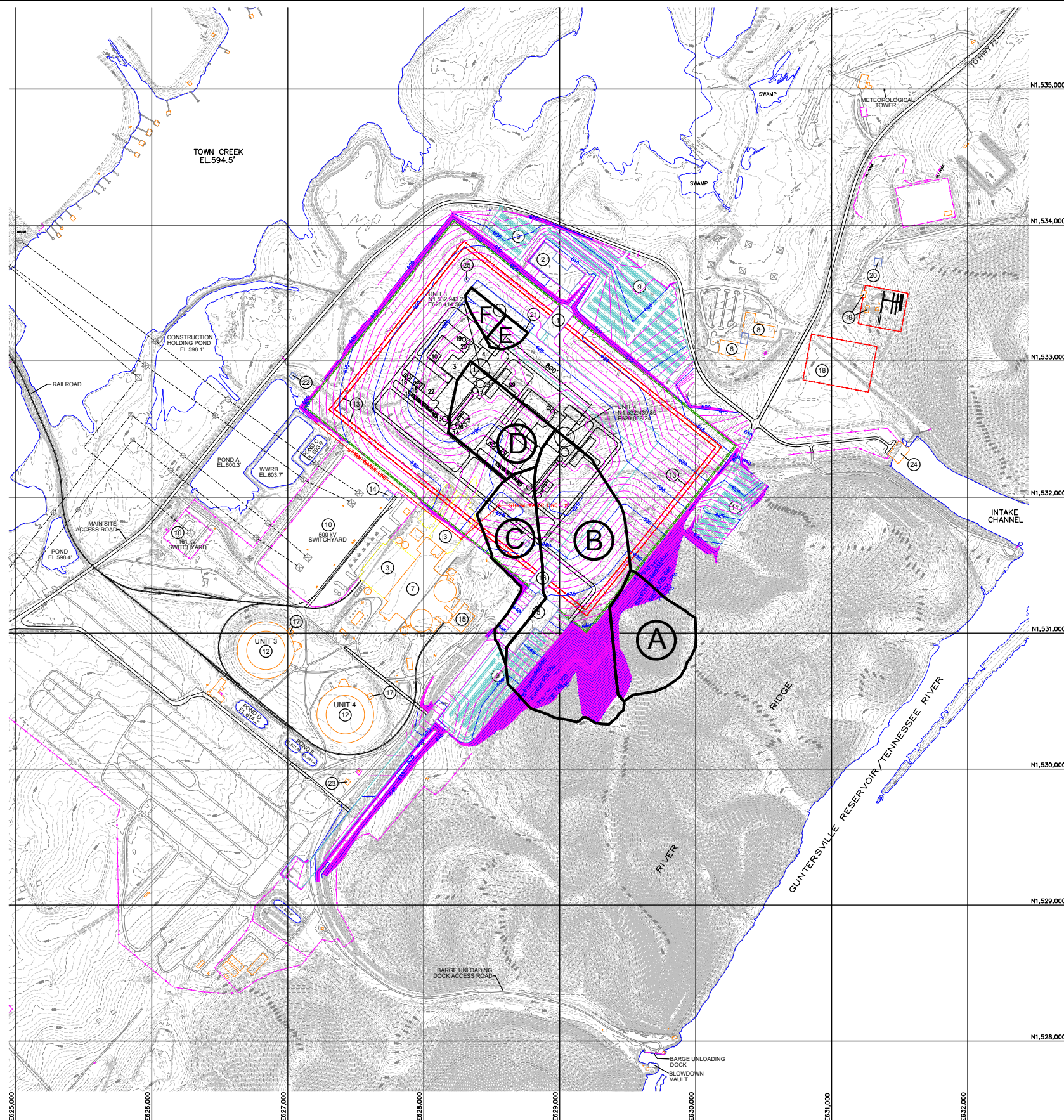


Bellefonte Nuclear Plant, Units 3 & 4
COL Application
Part 2, FSAR



DRAINAGE LEGEND:
 (A) DRAINAGE AREA (TYPICAL)

NEW UNITS 3 & 4 GENERATION FACILITY LEGEND:

1. CONTAINMENT/SHIELD BUILDING
2. TURBINE BUILDING
3. ANNEX BUILDING
4. AUXILIARY BUILDING
5. SWS COOLING TOWERS
7. RADWASTE BUILDING
10. DIESEL GENERATOR BUILDING
13. FIRE WATER/CLEARWELL STORAGE TANK
14. FIRE WATER STORAGE TANK
15. TRANSFORMER AREA
17. CONDENSATE STORAGE TANK
18. DIESEL GENERATOR OIL STORAGE TANKS
19. DEMINERALIZED WATER STORAGE TANK
20. BORIC ACID STORAGE TANK
22. TURBINE BUILDING LAYDOWN AREA
25. PASSIVE CONTAINMENT COOLING ANCILLARY WATER STORAGE TANK
26. DIESEL-DRIVEN FIRE PUMP/ENCLOSURE
99. T-PAD FOR CRANE

BUILDING LEGEND:

- ① NEW PRIMARY ACCESS PORTAL
- ② NEW ADMINISTRATION BUILDING
- ③ REMOVE EXIST BLDGS.
- ④ NEW MAINTENANCE BUILDING
- ⑤ NEW MATERIAL RECEIVING & SALLY PORT BUILDING
- ⑥ EXISTING SIMULATOR BUILDING
- ⑦ EXISTING UNIT 1 & 2 BUILDINGS
- ⑧ EXISTING SITE TRAINING BLDG
- ⑨ NEW SITE PARKING
- ⑩ EXISTING SWITCHYARD
- ⑪ NEW OUTAGE PARKING
- ⑫ EXISTING COOLING TOWERS
- ⑬ NEW SECURITY FENCE ASSY.
- ⑭ NEW SWITCHYARD BUILDING
- ⑮ EXISTING STORAGE AREA
- ⑯ NEW SECURITY ACCESS BLDG
- ⑰ NEW CIRCULATING PUMPS
- ⑱ NEW PSO SWITCHYARD FACILITY
- ⑲ EXISTING SECURITY RANGE FACILITY
- ⑳ NEW SECURITY TRAINING BUILDING
- ㉑ NEW TECH SUPPORT CENTER (WITHIN MAINTENANCE BUILDING)
- ㉒ NEW H2 STORAGE BUILDING
- ㉓ NEW HAZ. WASTE STORAGE BUILDING
- ㉔ EXISTING INTAKE PUMPING STATION
- ㉕ NEW TSC DIESEL GENERATOR BUILDING

POND LEGEND:

- POND A - YARD DRAINAGE POND
- WWRB - WASTE WATER RETENTION BASIN
- POND C - CONCENTRATED CHEMICAL TREATMENT POND (LINED)
- POND D - DESILTING POND
- POND E - ALUM SLUDGE PONDS

NOTES:

1. ELEVATIONS SHOWN ARE BASED ON MEAN SEA LEVEL (MSL).
2. EXISTING CONDITIONS AND TOPOGRAPHIC CONTOURS BASED UPON THE SANBORN MAP COMPANY, INC. PHOTOGRAMMETRIC SURVEY PERFORMED ON MARCH 26,2006 PROJECT NO. 060319.
3. CONTOUR INTERVAL IS 1 FEET.
4. 1000 FOOT GRID AND COORDINATE VALUES ARE BASED UPON AL EAST STATE PLANE COORDINATE SYSTEM NAD 83.

