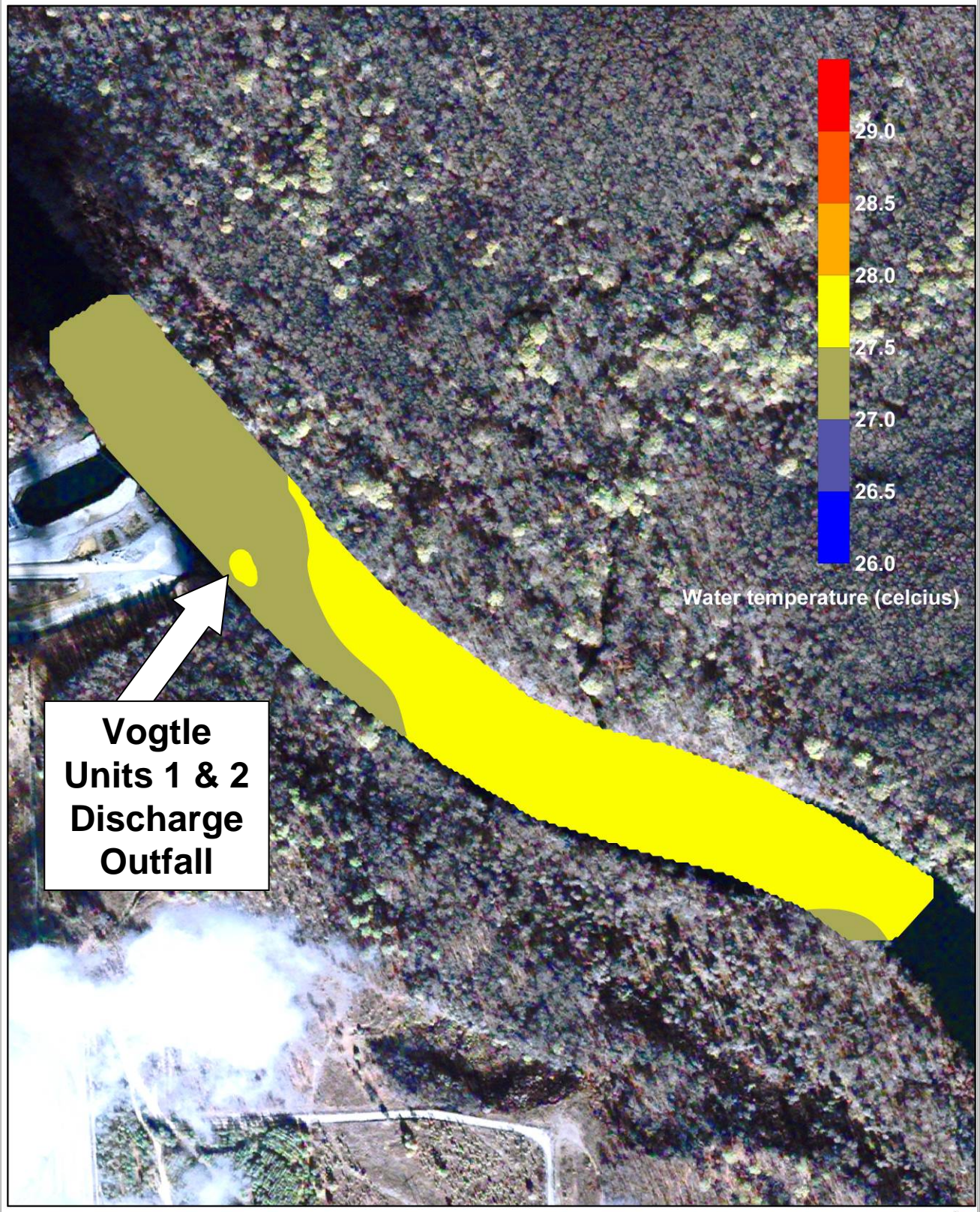


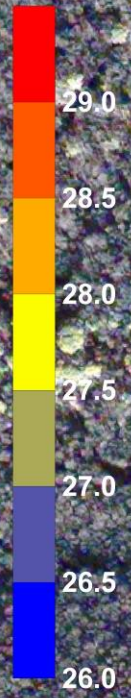
Exhibit SNC 000011

**Images from Thermal Study depicting
river water temperature**

Savannah River near Plant Vogtle, Georgia - 0.1 meter depth temperature isopleth

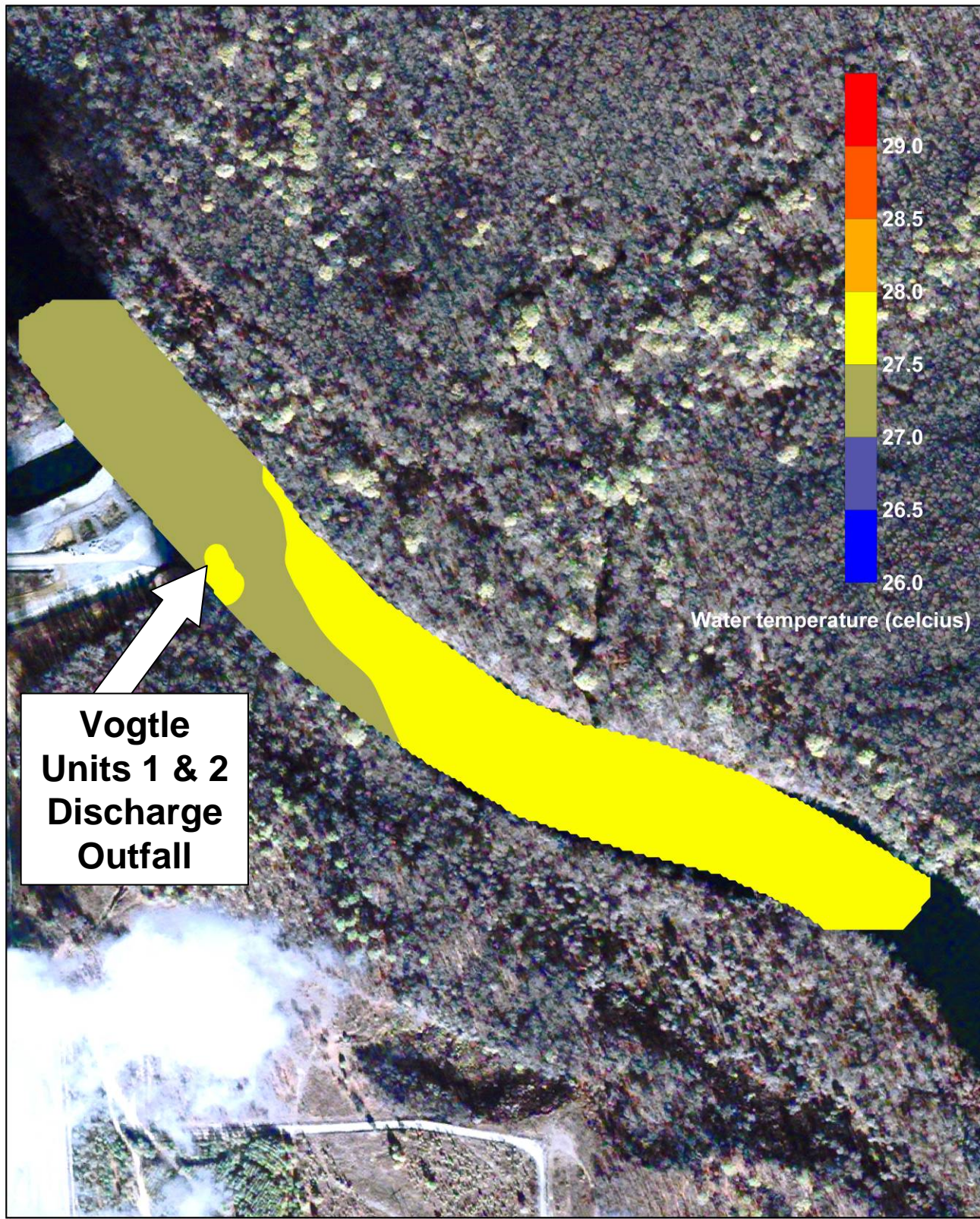


**Vogtle
Units 1 & 2
Discharge
Outfall**

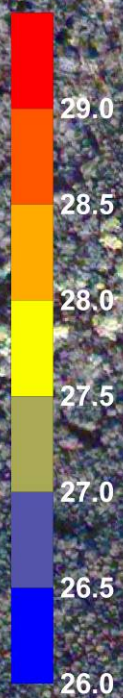


Water temperature (celcius)

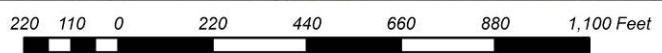
Savannah River near Plant Vogtle, Georgia - 0.5 meter depth temperature isopleth



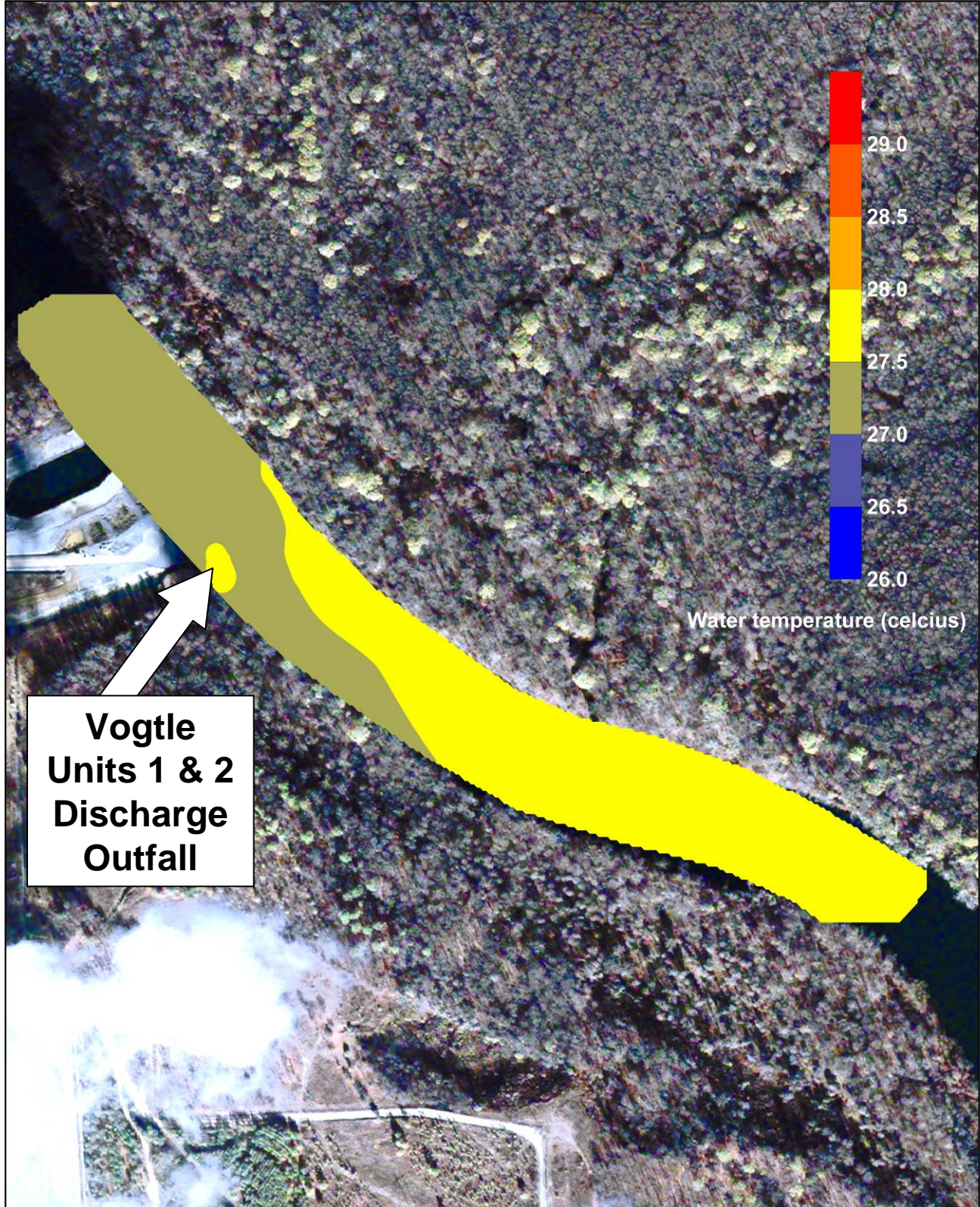
**Vogtle
Units 1 & 2
Discharge
Outfall**



Water temperature (celcius)



Savannah River near Plant Vogtle, Georgia - 1.0 meter depth temperature isopleth



Savannah River near Plant Vogtle, Georgia - 1.5 meter depth temperature isopleth

