



NORTH ANNA COL

B909CALUP01

COMPANY GEOVision  
 WELL B-909  
 FIELD  
 COUNTRY  
 STATE  
 COUNTY  
 LAT.:  
 LONG.:

OTHER SERVICES

Perm. Da..	Elev	KB	0.00
Log. Da..		DF	0.00
Drill Datum		GL	0.00

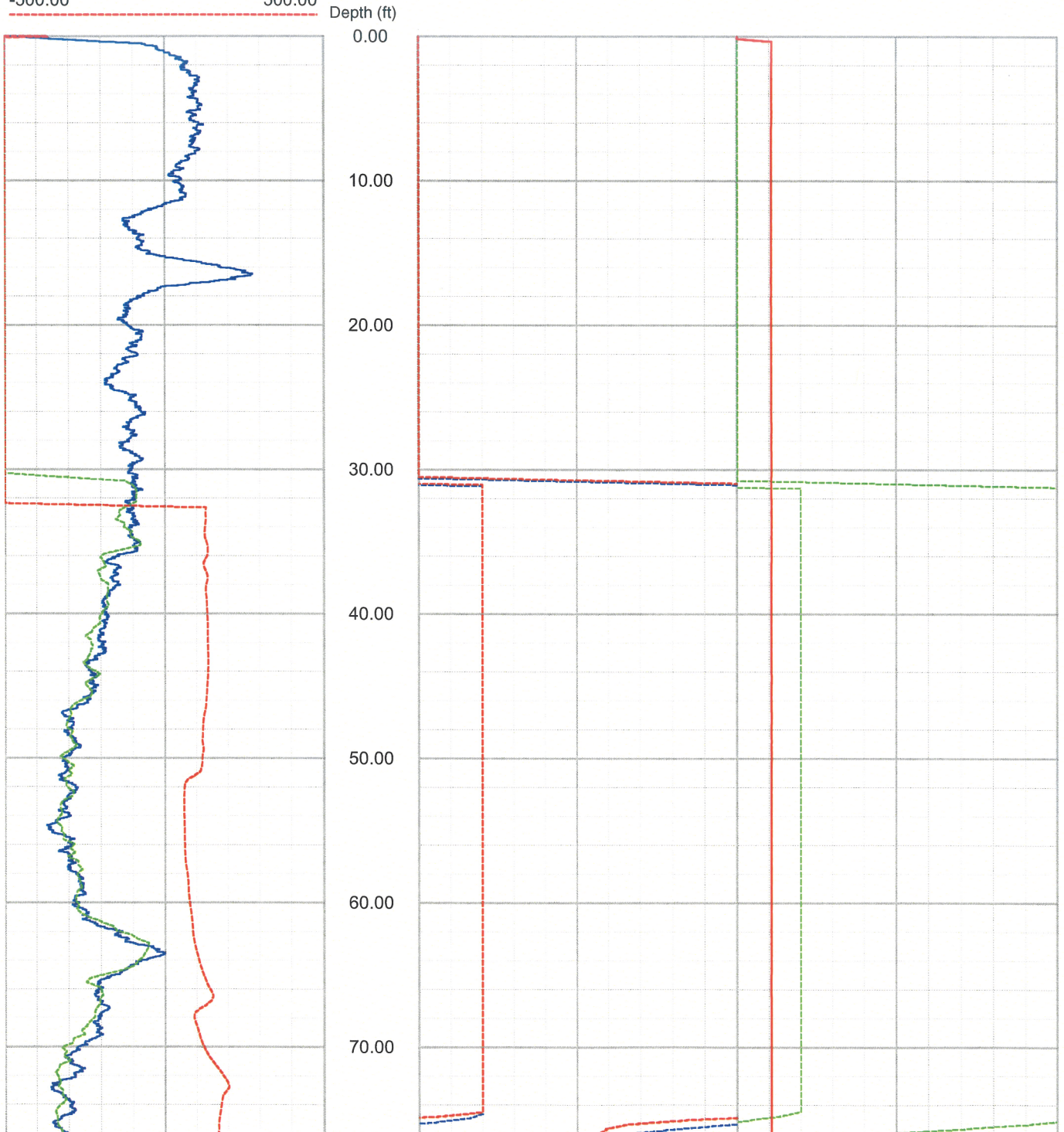
DATE	30 Aug 06	21 Oct 05	21 Oct 05
RUN#	4	0	0
TYPE OF LOG	CALIPER		
DEPTH DRILLER	200.00	0.00	0.00
DEPTH LOGGER	200.00	0.00	0.00
LOG DEEPEST	200.00	0.00	0.00
LOG SHALLOW	0.00	0.00	0.00
FLUID IN HOLE	WATER		
SALINITY			
DENSITY			
LEVEL			
MAX TEMP °C	0.00	0.00	0.00
RIG TIME			
RECORDED BY	R. STELLER		
WITNESSED BY			

RUN#	BIT RECORD			CASING RECORD			
	SIZE	FROM	TO	SIZE	WEIGHT	FROM	TO
4	3.70	78.00	200.00	3.00	0.00	0.00	78.00
0	0.00	0.00	0.00	0.00	0.00	0.00	0.00
0	0.00	0.00	0.00	0.00	0.00	0.00	0.00

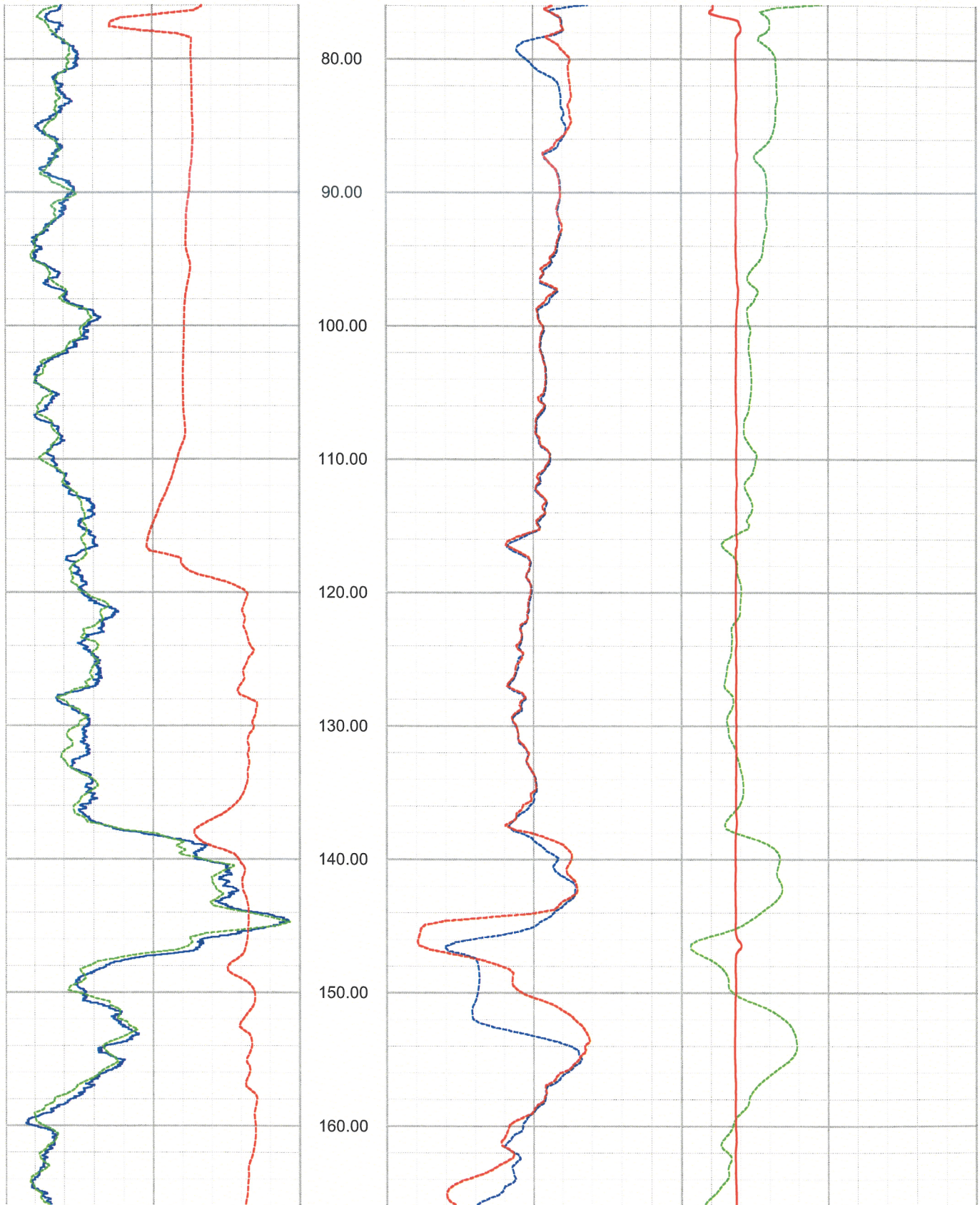
ROBERTSON GEOLOGGING TECHNOLOGY

REMARKS ( C:\Data\PS\North Anna\B-909 30 August 2006 ..

50.00	NGAM CPS	300.00	1.00	LON Ohm M.	10000.00	1.00	SPR Ohm	10000.00
50.00	EGAM API Cs.	300.00	1.00	SHN Ohm M.	10000.00	2.00	CALP INCH	12.00
-500.00	SP Millivolt	500.00						



North Anna COL Boring B-909 lower section ELOG, Caliper and Gamma Sheet 2 of 4



North Anna COL Boring B-909 lower section ELOG, Caliper and Gamma Sheet 3 of 4

