

Figure 29. Boring B-407, Deviation Projection (dimensions in feet)

CCNPP COLA Borehole B-418 velocity data
Receiver to Receiver V_s and V_p Analysis

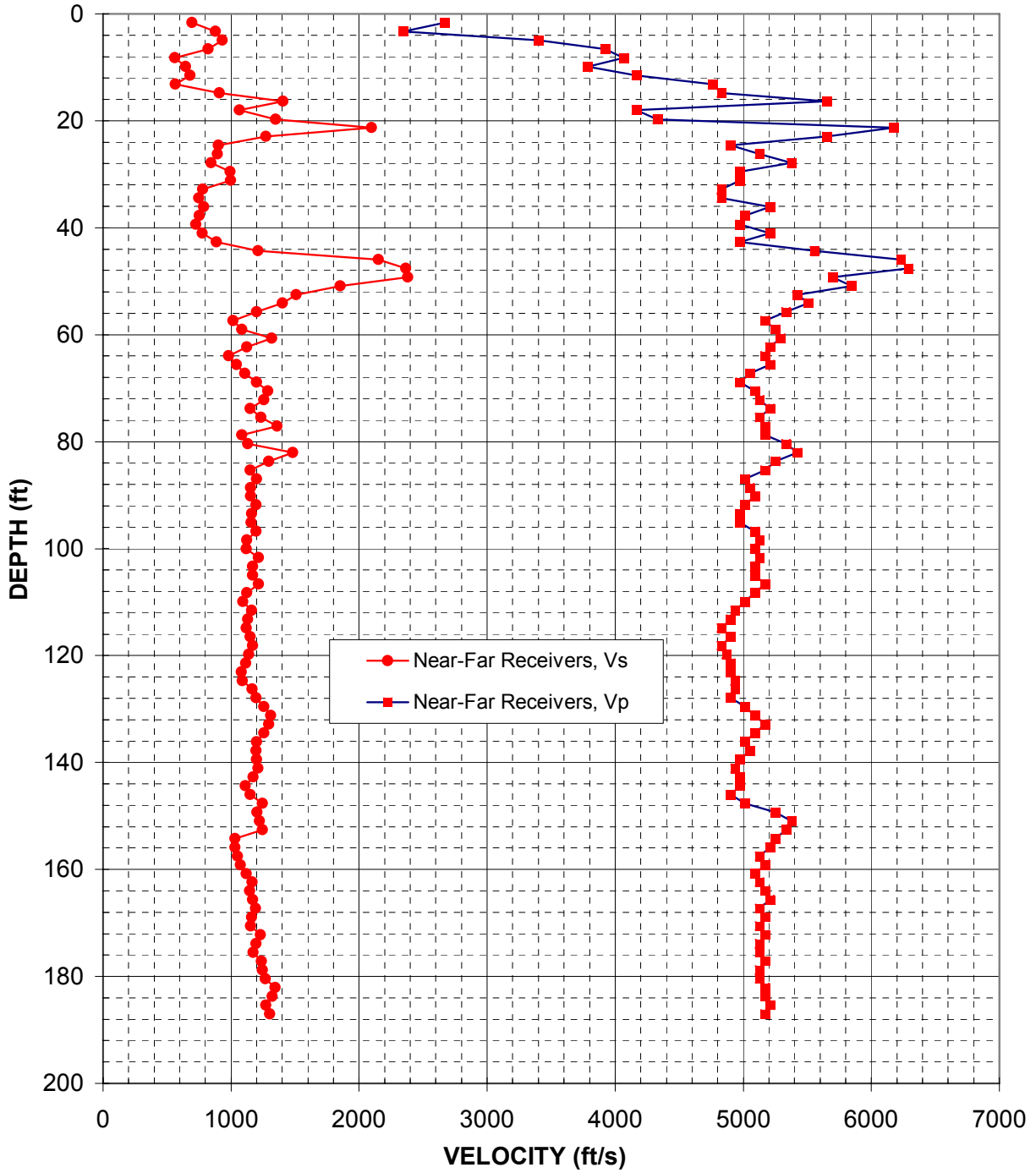


Figure 30: Boring B-418, Suspension R1-R2 P- and S_H -wave velocities

Depth (feet)	V _s (feet/sec)	V _p (feet/sec)
1.6	690	2670
3.3	880	2350
4.9	930	3400
6.6	820	3920
8.2	560	4070
9.8	650	3790
11.5	680	4170
13.1	560	4760
14.8	910	4830
16.4	1410	5650
18.0	1060	4170
19.7	1350	4330
21.3	2100	6170
23.0	1270	5650
24.6	900	4900
26.3	890	5130
27.9	840	5380
29.5	1000	4980
31.2	1000	4980
32.8	780	4830
34.5	750	4830
36.1	790	5210
37.7	750	5010
39.4	720	4980
41.0	780	5210
42.7	890	4980
44.3	1210	5560
45.9	2150	6230
47.6	2360	6290
49.2	2380	5700
50.9	1850	5850
52.5	1510	5420
54.1	1400	5510
55.8	1200	5330
57.4	1020	5170
59.1	1090	5250
60.7	1320	5290
62.3	1120	5210
64.0	980	5170
65.6	1040	5210
67.3	1110	5050
68.9	1200	4980
70.5	1290	5090
72.2	1260	5130
73.8	1150	5210
75.5	1230	5130
77.1	1360	5170
78.7	1090	5170
80.4	1130	5330
82.0	1480	5420

Depth (feet)	V _s (feet/sec)	V _p (feet/sec)
83.7	1300	5250
85.3	1150	5170
86.9	1200	5010
88.6	1150	5050
90.2	1150	5090
91.9	1190	5010
93.5	1160	4980
95.1	1160	4980
96.8	1190	5090
98.4	1120	5130
100.1	1120	5090
101.7	1220	5130
103.4	1170	5090
105.0	1170	5090
106.6	1220	5170
108.3	1120	5090
109.9	1090	5010
111.6	1160	4940
113.2	1130	4900
114.8	1120	4830
116.5	1150	4900
118.1	1170	4830
119.8	1140	4870
121.4	1110	4900
123.0	1080	4900
124.7	1090	4940
126.3	1170	4940
128.0	1190	4900
129.6	1260	5010
131.2	1310	5090
132.9	1300	5170
134.5	1260	5090
136.2	1200	5010
137.8	1190	5050
139.4	1200	4980
141.1	1210	4940
142.7	1170	4980
144.4	1110	4980
146.0	1150	4900
147.6	1240	5010
149.3	1200	5250
150.9	1220	5380
152.6	1240	5330
154.2	1030	5250
155.8	1030	5210
157.5	1050	5130
159.1	1070	5170
160.8	1120	5090
162.4	1170	5130
164.0	1150	5170

Depth (feet)	V _s (feet/sec)	V _p (feet/sec)
165.7	1170	5210
167.3	1190	5130
169.0	1160	5170
170.6	1150	5130
172.2	1230	5170
173.9	1190	5130
175.5	1170	5130
177.2	1240	5170
178.8	1240	5130
180.5	1270	5130
182.1	1340	5170
183.7	1320	5170
185.4	1270	5210
187.0	1300	5170

Table 16. Boring B-418, Suspension R1-R2 depths and P- and S_H-wave velocities

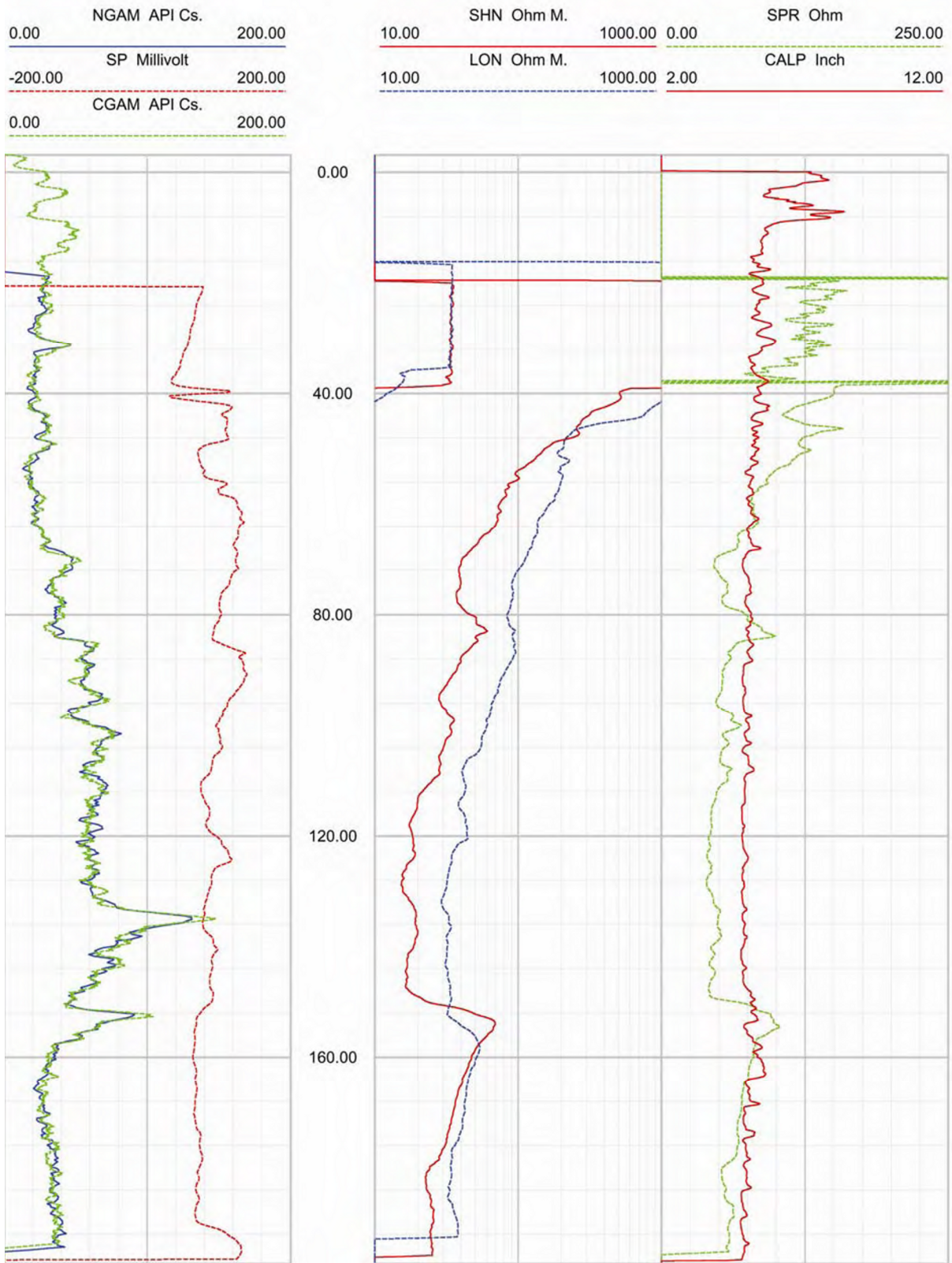


Figure 31. Boring B-418, Caliper, Natural gamma, Resistivity and SP logs

Deviated borehole in orthographic projection, viewed from N45

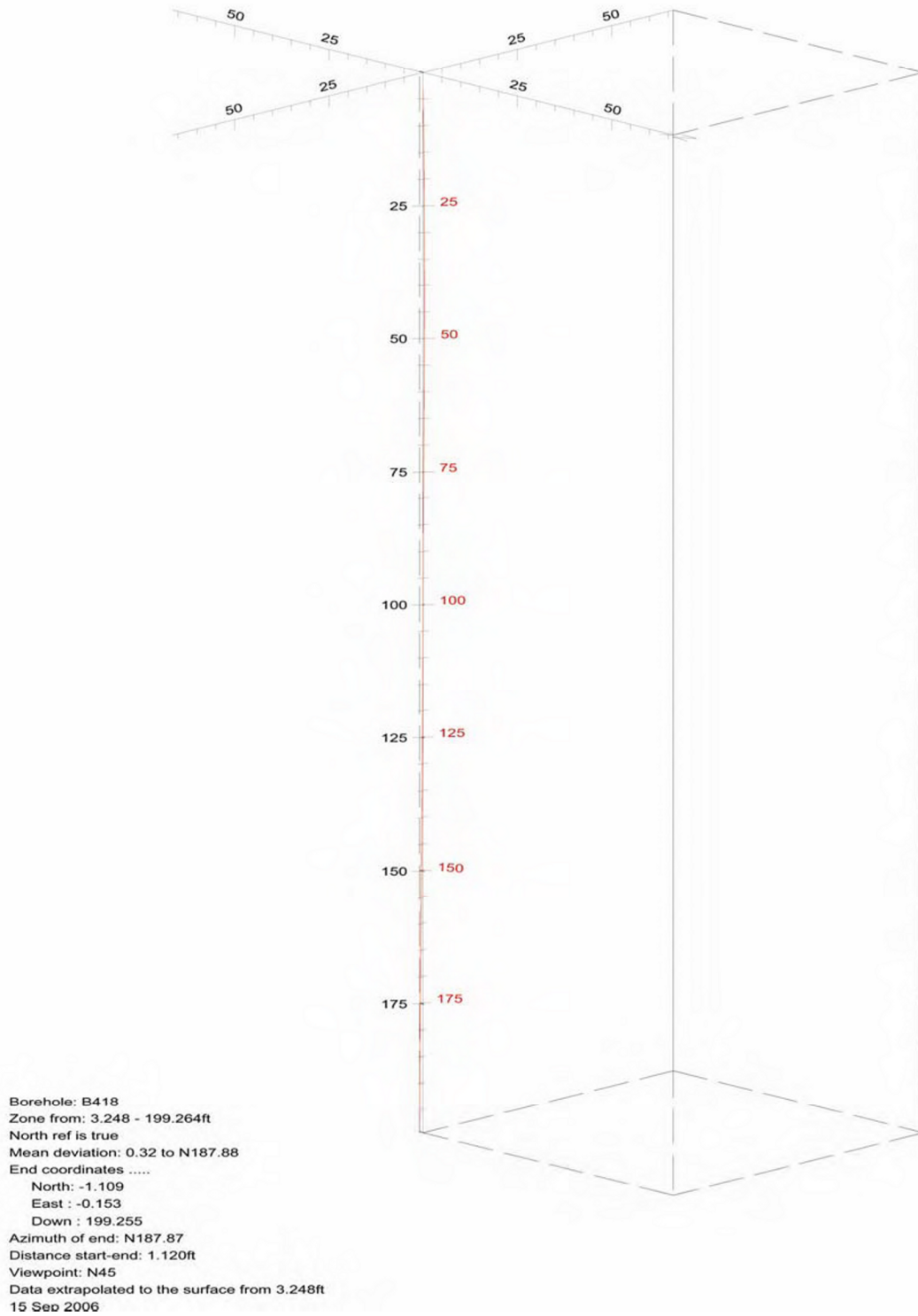


Figure 32. Boring B-418, Deviation Projection (dimensions in feet)

**CCNPP COLA Borehole B-423 velocity data
Receiver to Receiver V_s and V_p Analysis**

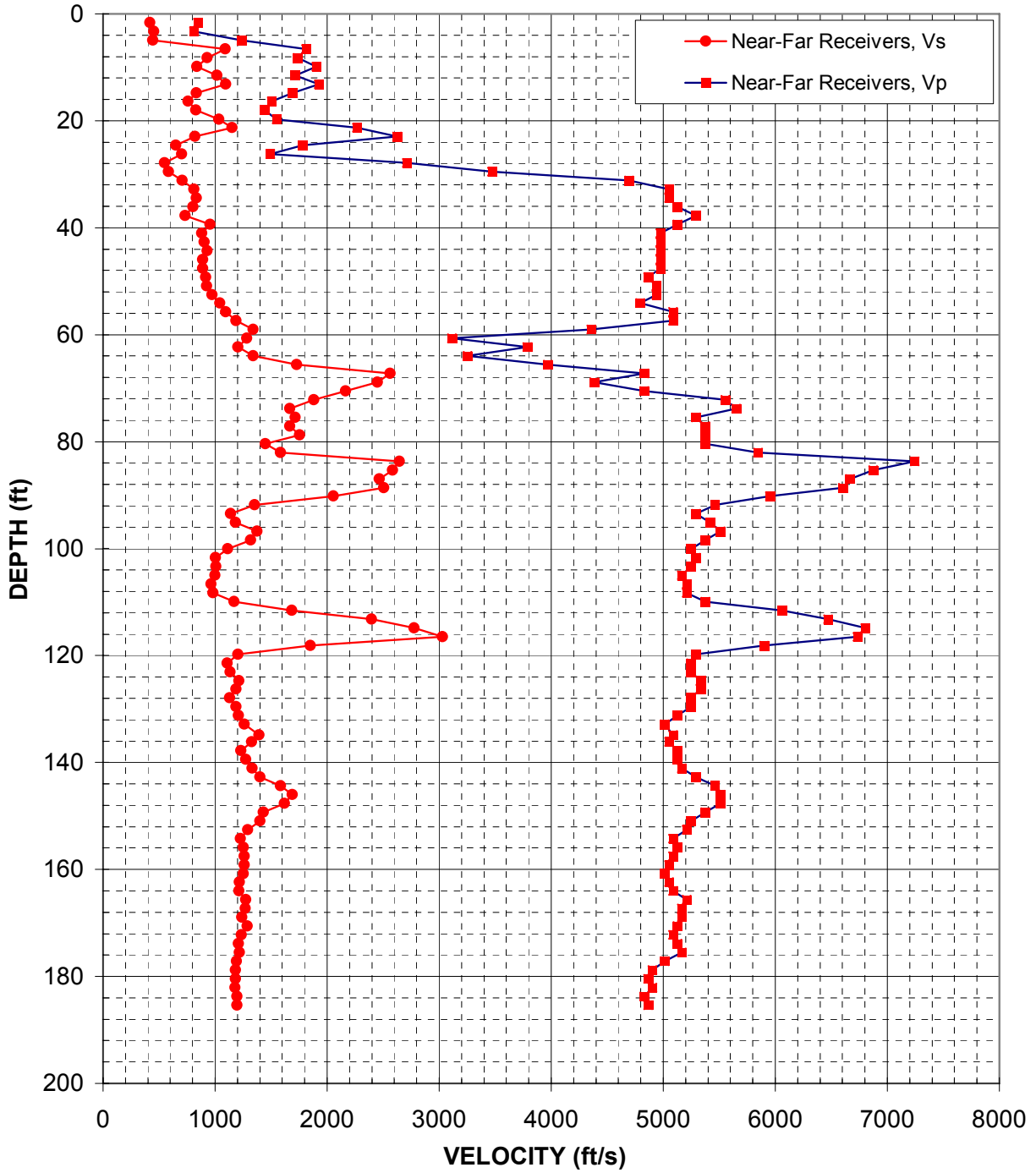


Figure 33: Boring B-423, Suspension R1-R2 P- and S_H -wave velocities

Depth (feet)	V _s (feet/sec)	V _p (feet/sec)
1.6	420	850
3.3	460	810
4.9	440	1230
6.6	1090	1810
8.2	930	1740
9.8	840	1900
11.5	1020	1720
13.1	1100	1930
14.8	830	1690
16.4	760	1510
18.0	830	1440
19.7	1040	1550
21.3	1150	2270
23.0	820	2620
24.6	650	1780
26.3	700	1490
27.9	550	2710
29.5	590	3470
31.2	710	4690
32.8	810	5050
34.5	840	5050
36.1	800	5130
37.7	730	5290
39.4	960	5130
41.0	880	4980
42.7	900	4980
44.3	930	4980
45.9	890	4980
47.6	890	4980
49.2	920	4870
50.9	930	4940
52.5	970	4940
54.1	1040	4800
55.8	1100	5090
57.4	1190	5090
59.1	1340	4360
60.7	1280	3120
62.3	1200	3790
64.0	1340	3250
65.6	1730	3970
67.3	2560	4830
68.9	2450	4390
70.5	2160	4830
72.2	1880	5560
73.8	1670	5650
75.5	1720	5290
77.1	1670	5380
78.7	1750	5380
80.4	1450	5380
82.0	1590	5850

Depth (feet)	V _s (feet/sec)	V _p (feet/sec)
83.7	2650	7250
85.3	2580	6870
86.9	2470	6670
88.6	2510	6600
90.2	2060	5950
91.9	1360	5460
93.5	1140	5290
95.1	1180	5420
96.8	1380	5510
98.4	1320	5380
100.1	1110	5250
101.7	1000	5290
103.4	1010	5250
105.0	1000	5170
106.6	960	5210
108.3	980	5210
109.9	1170	5380
111.6	1680	6060
113.2	2400	6470
114.8	2780	6800
116.5	3030	6730
118.1	1850	5900
119.8	1200	5290
121.4	1110	5250
123.0	1130	5250
124.7	1210	5330
126.3	1190	5330
128.0	1130	5250
129.6	1190	5250
131.2	1210	5130
132.9	1260	5010
134.8	1390	5090
136.2	1330	5050
137.8	1230	5130
139.4	1280	5130
141.1	1330	5170
142.7	1400	5290
144.4	1590	5460
146.0	1690	5510
147.6	1620	5510
149.3	1430	5380
150.9	1400	5250
152.6	1290	5210
154.2	1230	5090
155.8	1250	5130
157.5	1260	5090
159.1	1260	5050
160.8	1250	5010
162.4	1220	5050
164.0	1210	5090

Depth (feet)	V _s (feet/sec)	V _p (feet/sec)
165.7	1280	5210
167.3	1270	5170
169.0	1240	5170
170.6	1290	5130
172.2	1230	5090
173.9	1210	5130
175.5	1220	5170
177.2	1190	5010
178.8	1180	4900
180.5	1180	4870
182.1	1180	4900
183.7	1190	4830
185.4	1190	4870

Table 17. Boring B-423, Suspension R1-R2 depths and P- and S_H-wave velocities

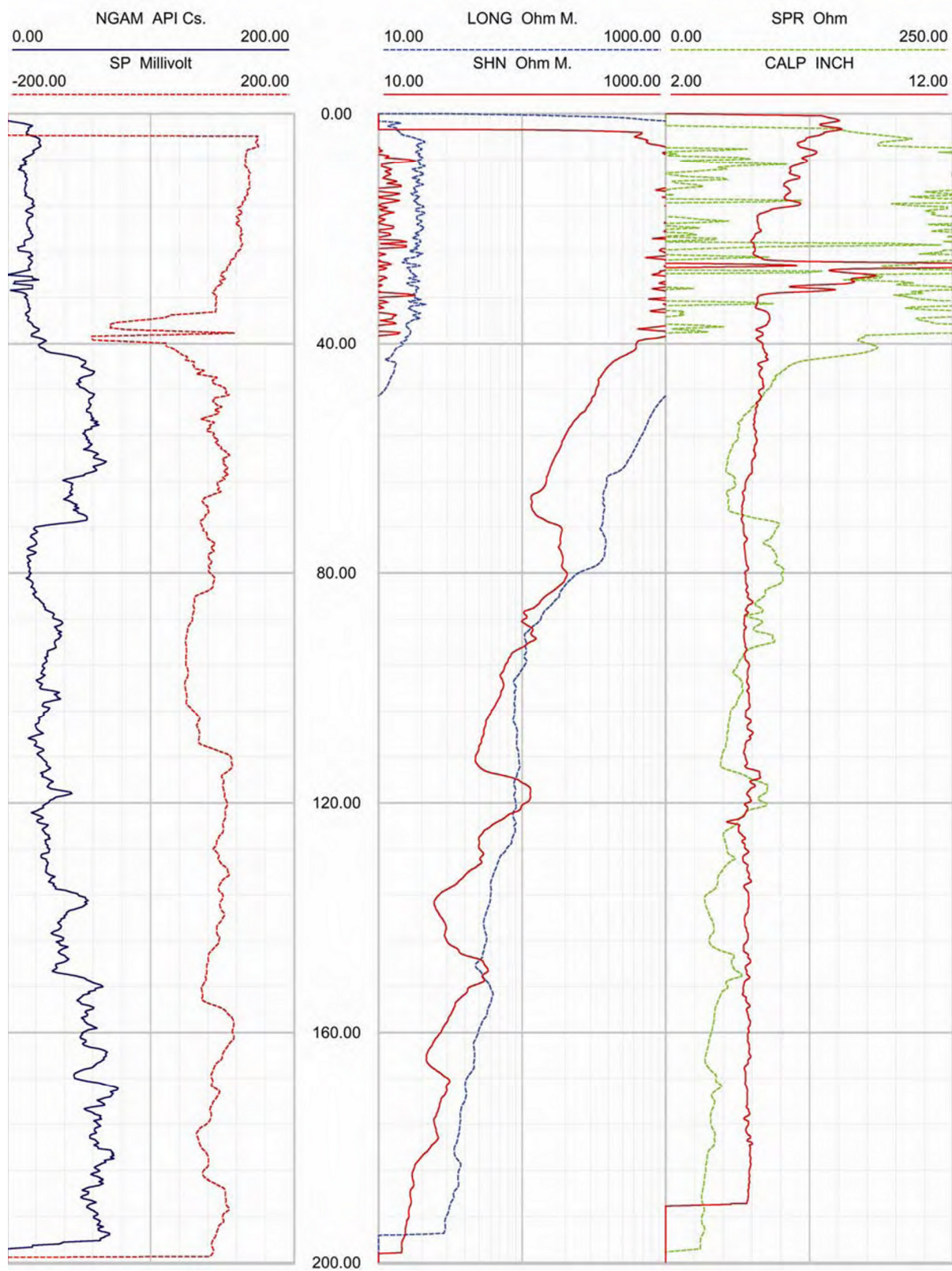


Figure 34. Boring B-423, Caliper, Natural gamma, Resistivity and SP logs

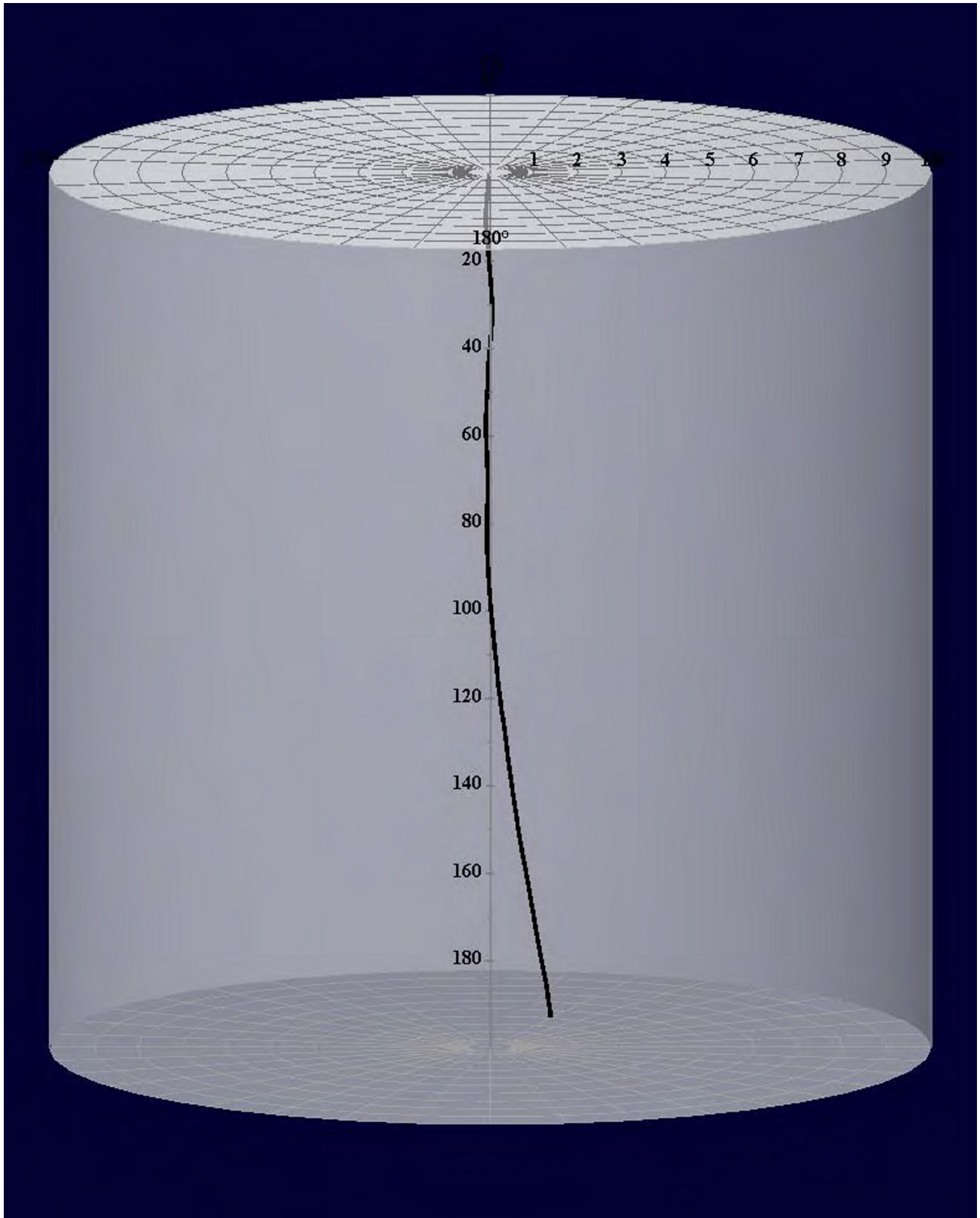


Figure 35. Boring B-423, Deviation Projection (dimensions in feet)