

Figure 2.5-16—{Regional Strip Maps Showing Tectonostratigraphic Divisions and Regional Cross-Section Lines}

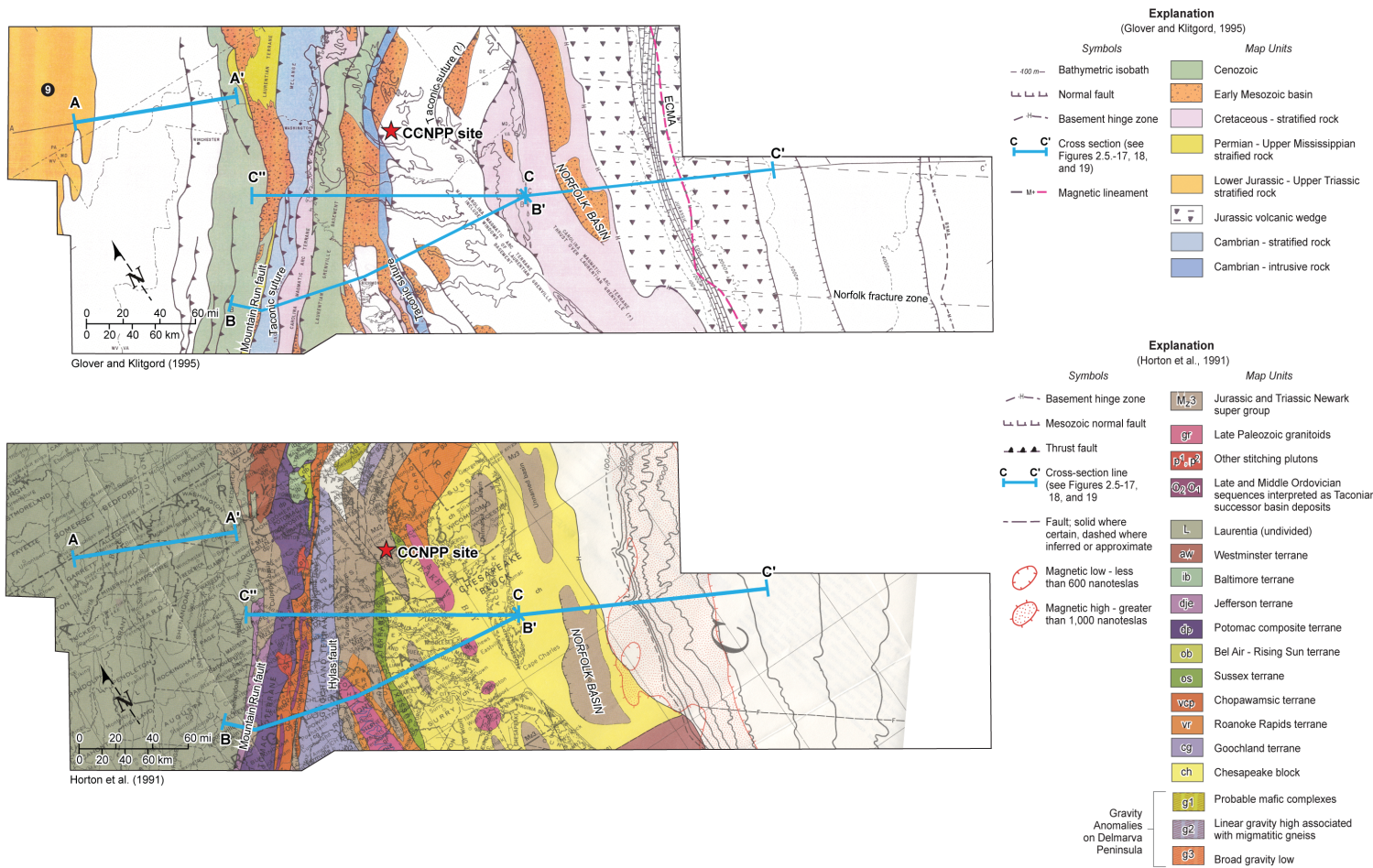
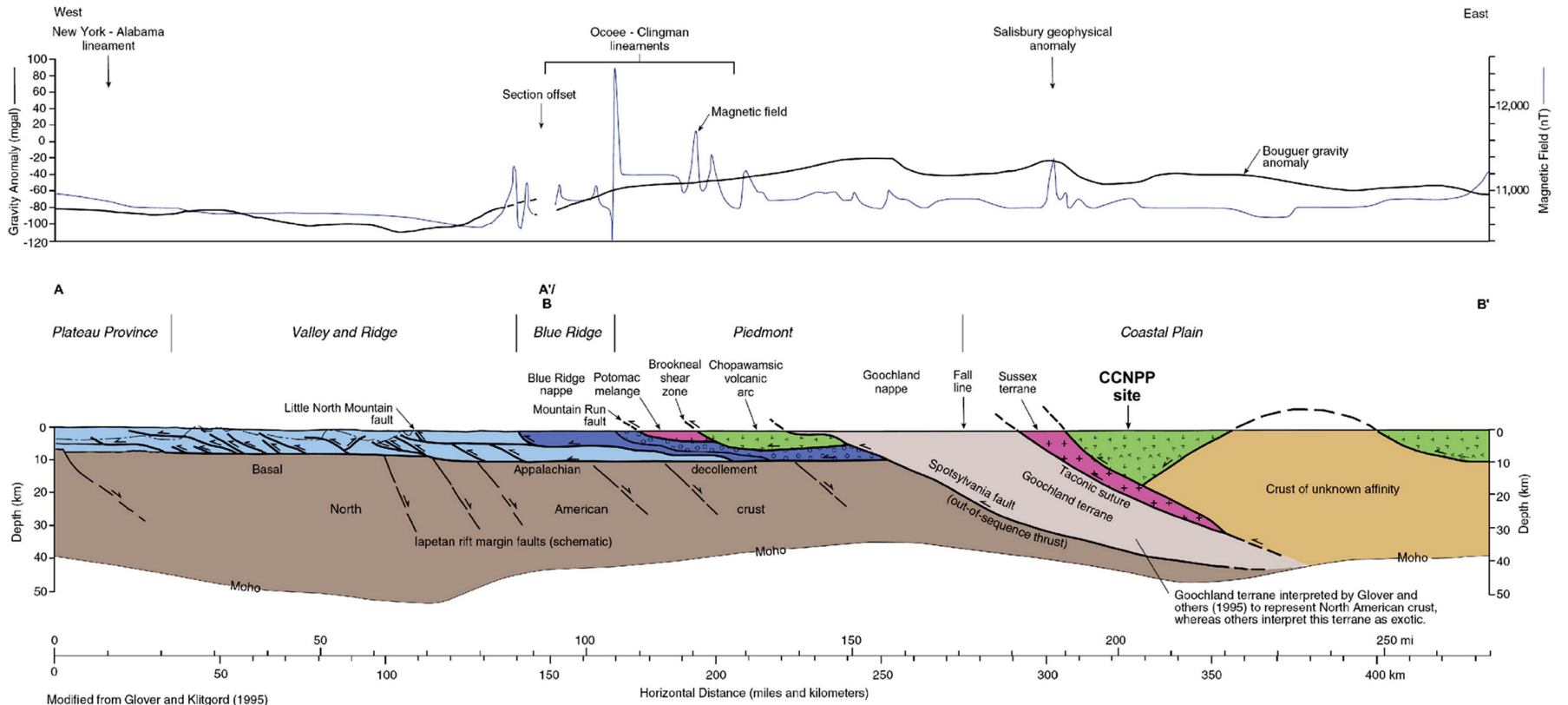


Figure 2.5-16 – {Regional Strip Maps Showing Tectonostratigraphic Divisions and Regional Cross-section Lines}

Figure 2.5-17—{Crustal-Scale Cross Section Through the Appalachian Orogen and Coastal Plain}



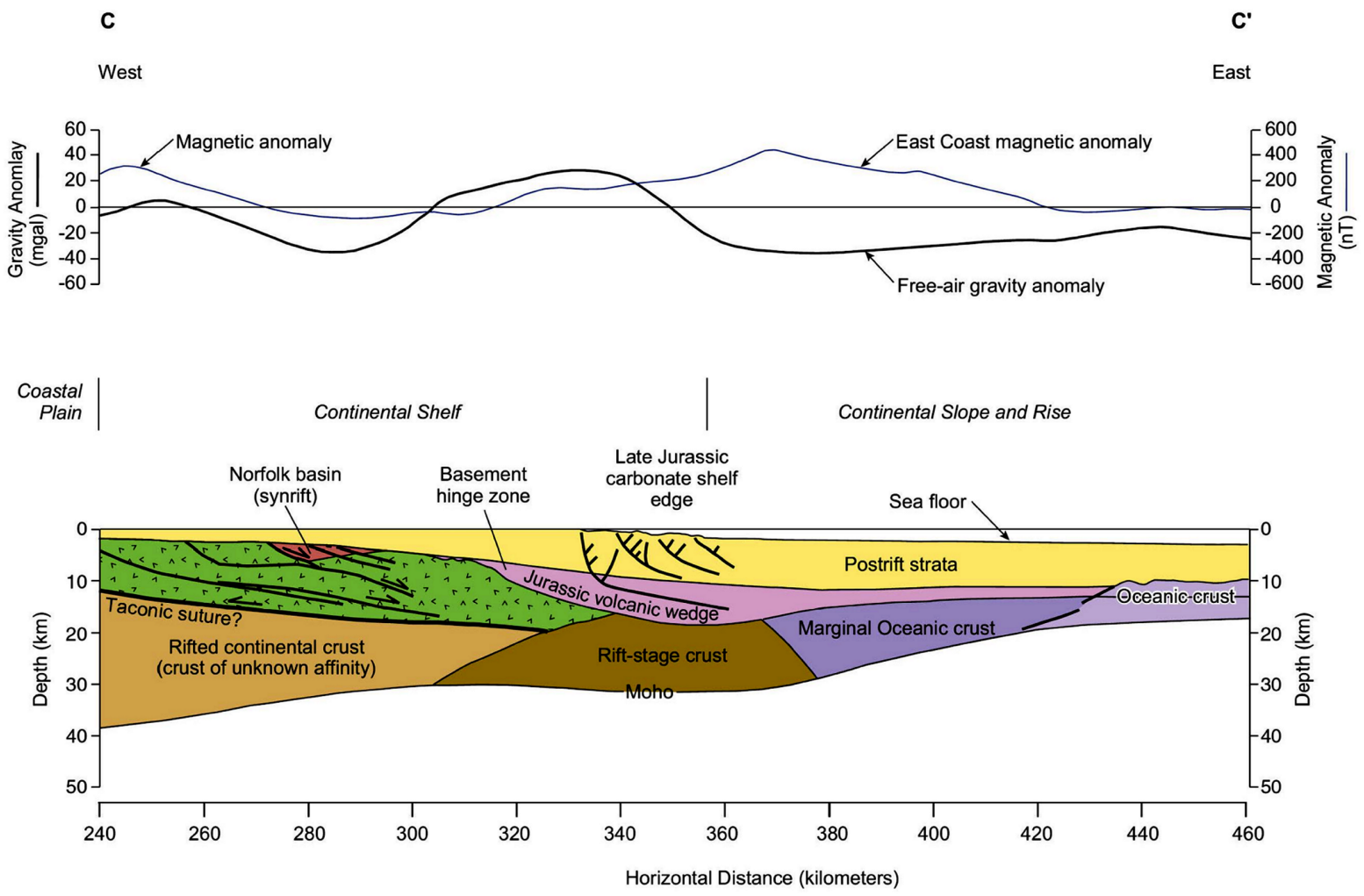
Modified from Glover and Klitgord (1995)
No vertical exaggeration

Explanation

- Autochthonous North American deposits
- Blue Ridge: North American basement overlain by late Proterozoic - early Cambrian continental margin deposits
- North American basement
- Goochland terrane
- Carolina/Chopawamsic magmatic arc terrain
- Accretionary complex and arc-related rocks
- Crust of unknown affinity
- Stratigraphic marker horizon; originally horizontal

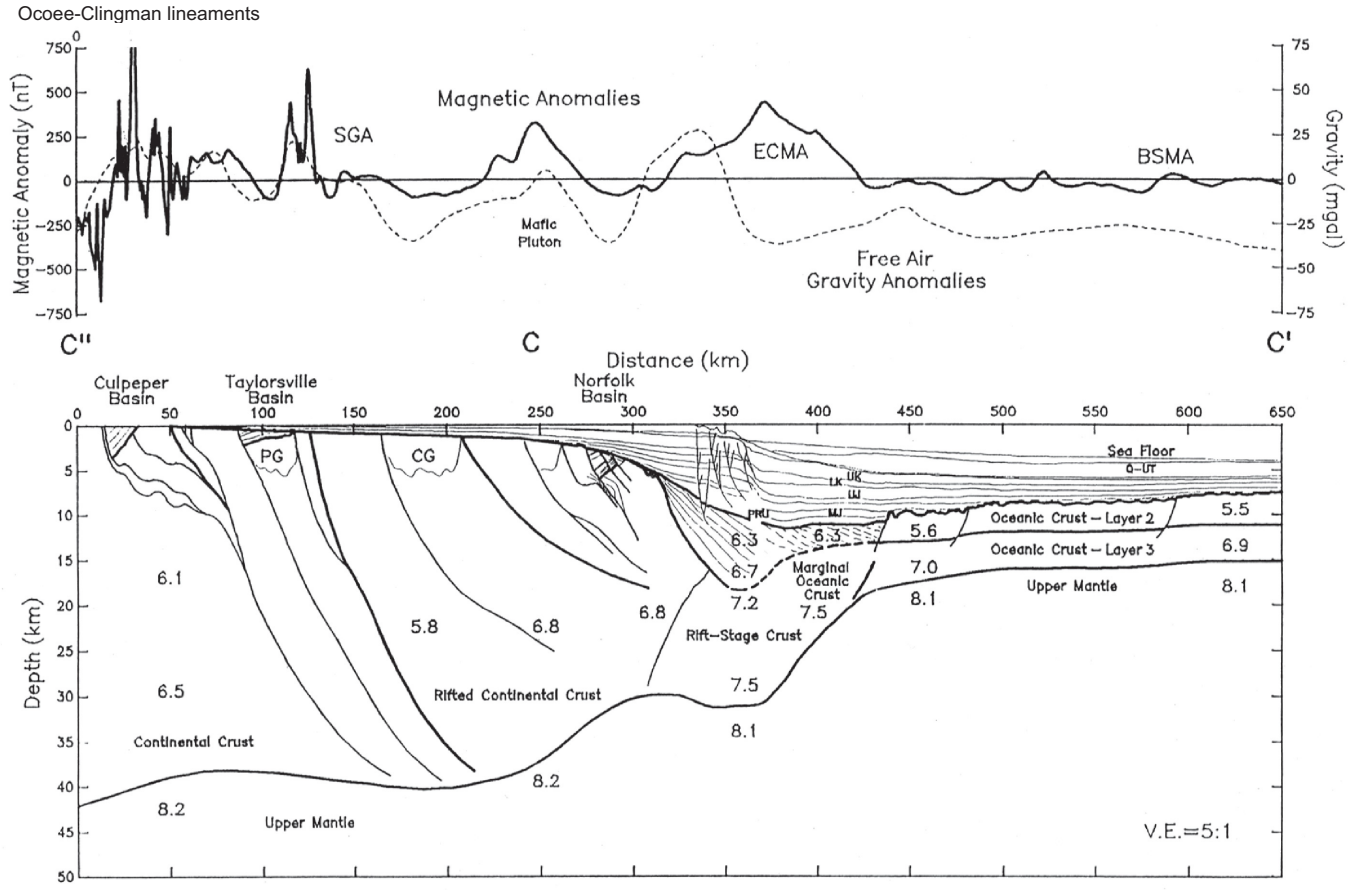
Notes: 1. Mesozoic basins and post-rift strata removed for clarity.
2. CCNPP site projected approximately 65 miles south southwest to section B - B'.

Figure 2.5-18—{Crustal-Scale Cross Section Across the Mid-Atlantic Continental Shelf, Slope and Rise}



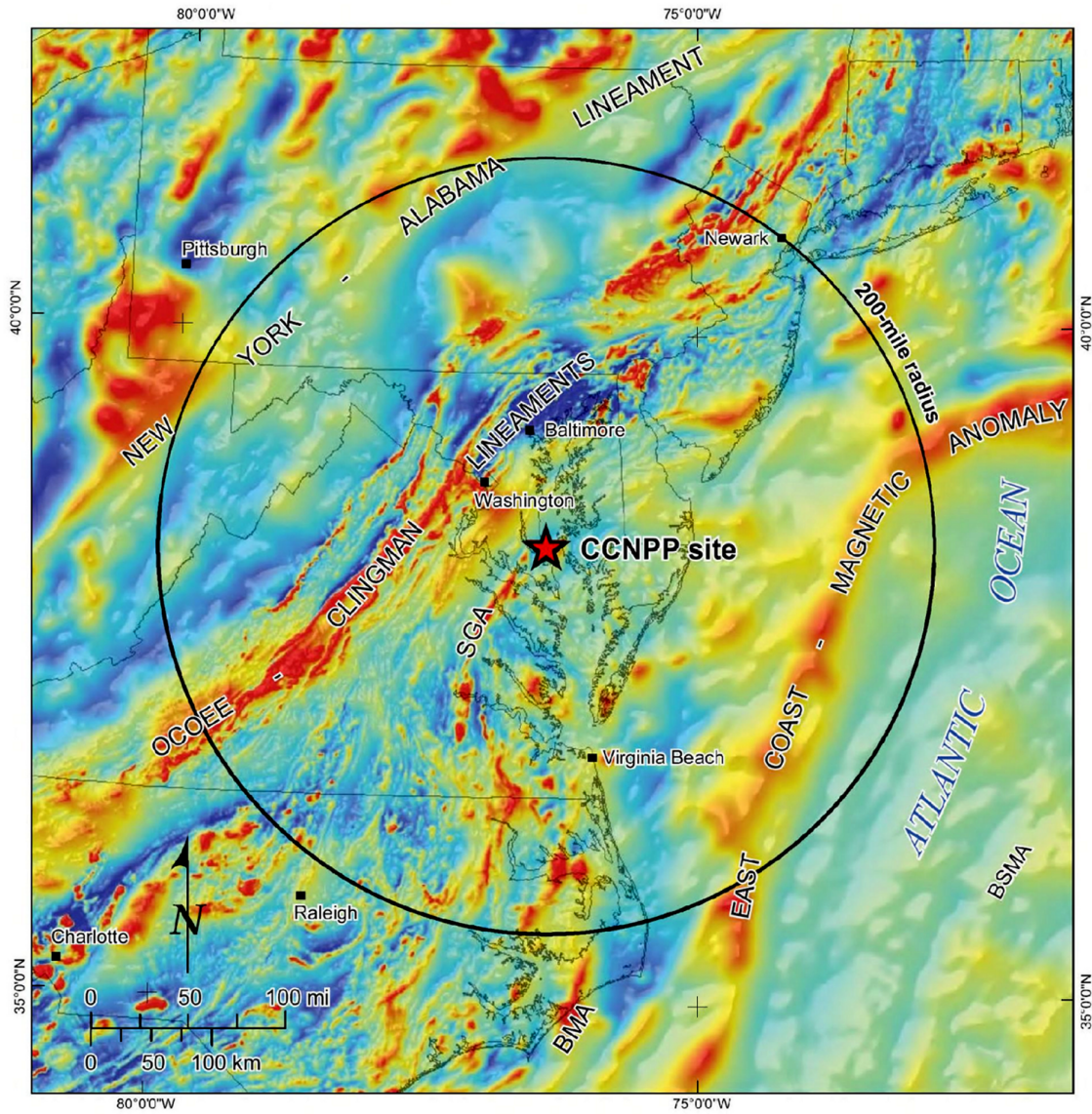
Modified from Glover and Klitgord (1995)

Figure 2.5-19—{Crustal-Scale Cross Section of the Mid-Atlantic Passive Margin}



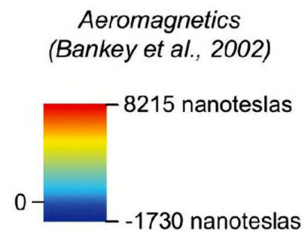
Cross section along line C'' - C - C' displaying selected crustal fractures. Surface features along segment C'' - C are taken directly from the geologic map panel. Subsurface features have been projected northward onto the profile from cross section B - B'. Magnetic and gravity anomaly profiles along the section and selected refraction velocity values (in km/sec) are shown. Major sub-horizontal crustal boundaries are indicated by heavy lines. Sedimentary strata are indicated by the light lines above the upper heavy line. SGA - Salisbury geophysical anomaly; ECMA = East Coast magnetic anomaly; BSMA = Blake Spur magnetic anomaly; PG = Petersburg Granite; CG = Chesapeake Granite. See Figure 2.5-16 for section location. C- C' is the same as Figure 2.5-17, but represents an alternative interpretation.

Figure 2.5-20—{Regional Magnetic Anomaly Map}



Explanation

- BMA Brunswick magnetic anomaly
- BSMA Blake Spur magnetic anomaly
- SGA Salisbury geophysical anomaly



Note: Aeromagnetic data from Bankey et al. (2002).