

Special Figures

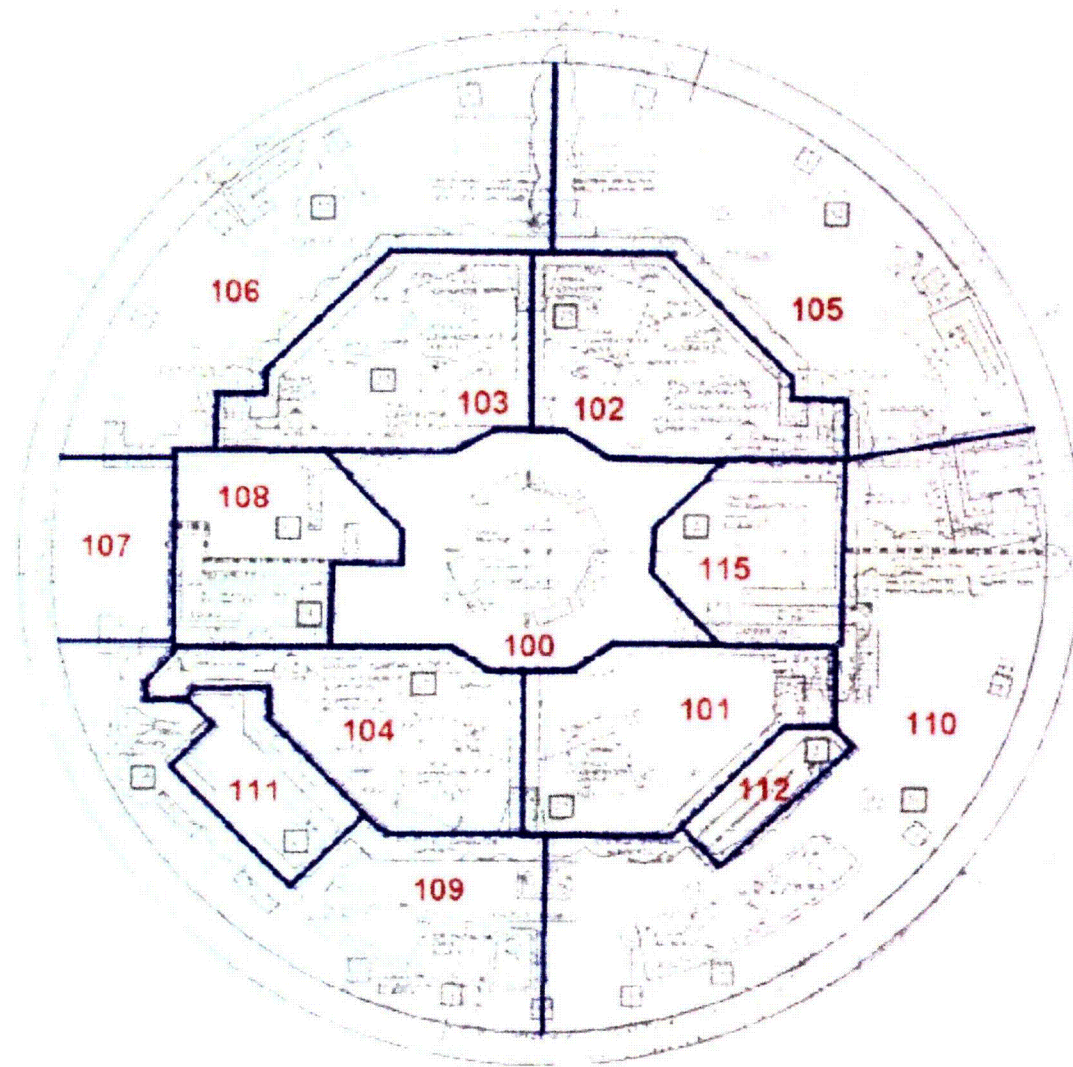


Figure 3.b-1 Zone Map El. 808'-0"

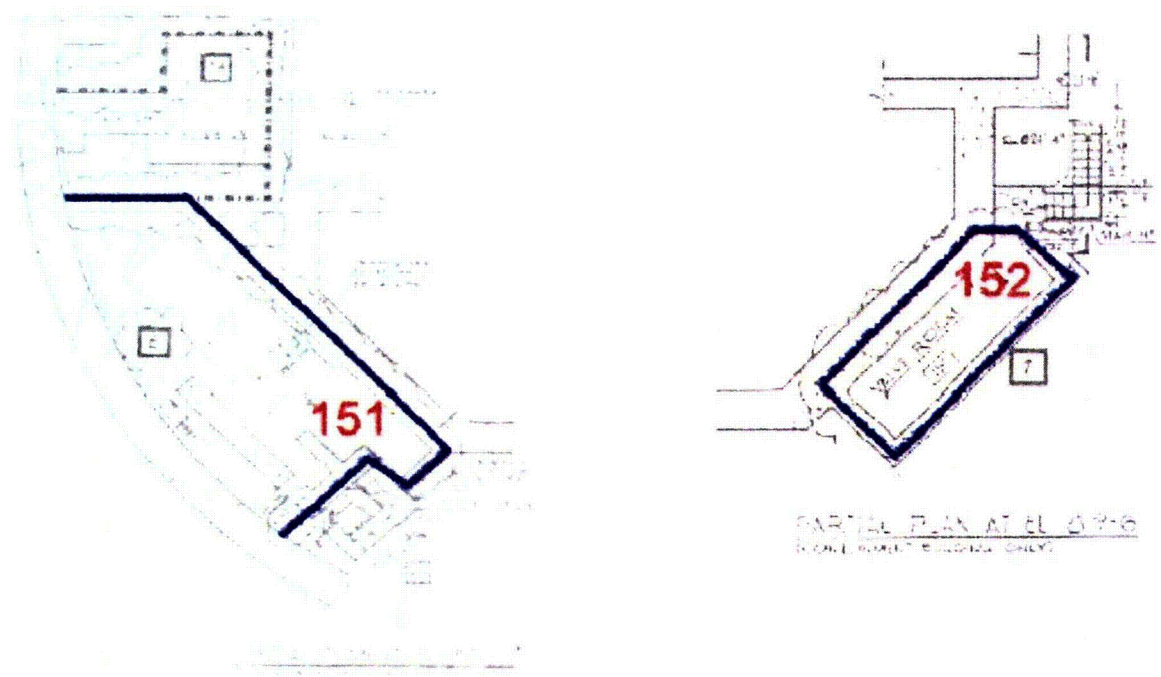


Figure 3.b-2 Zone Map El. 822'-9" & 819'-8"

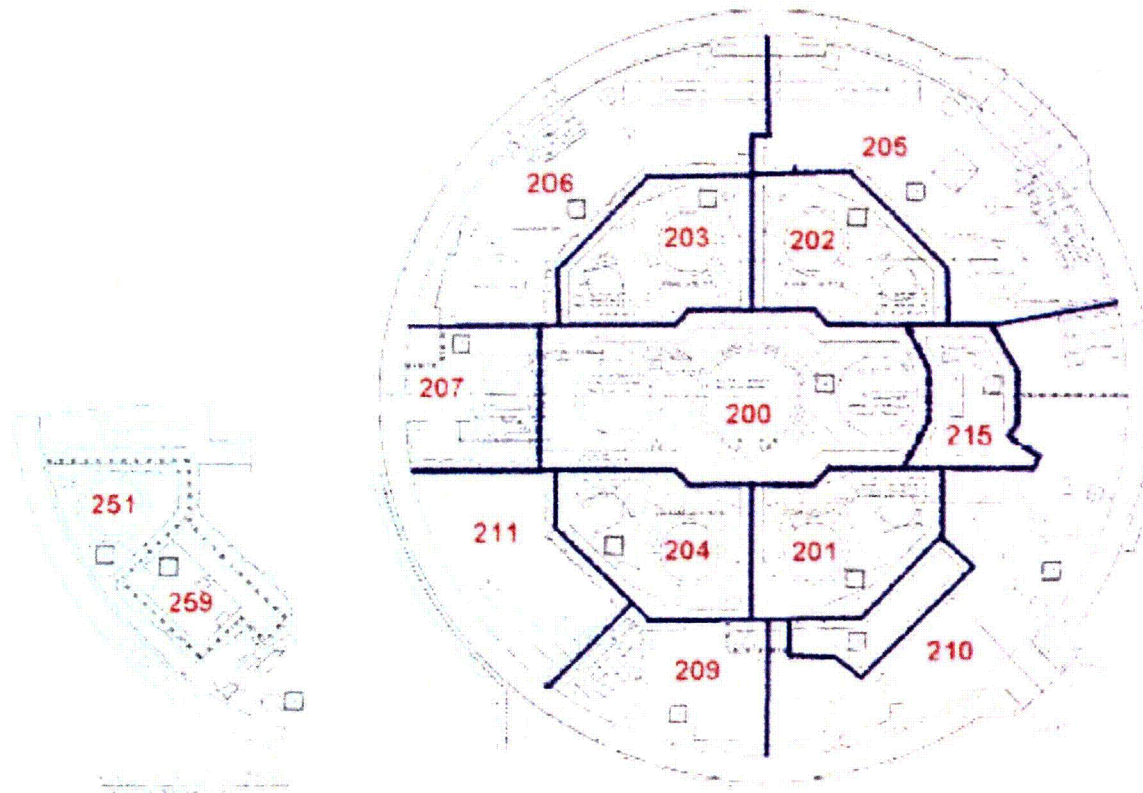


Figure 3.b-3 Zone Map El. 832'-6"

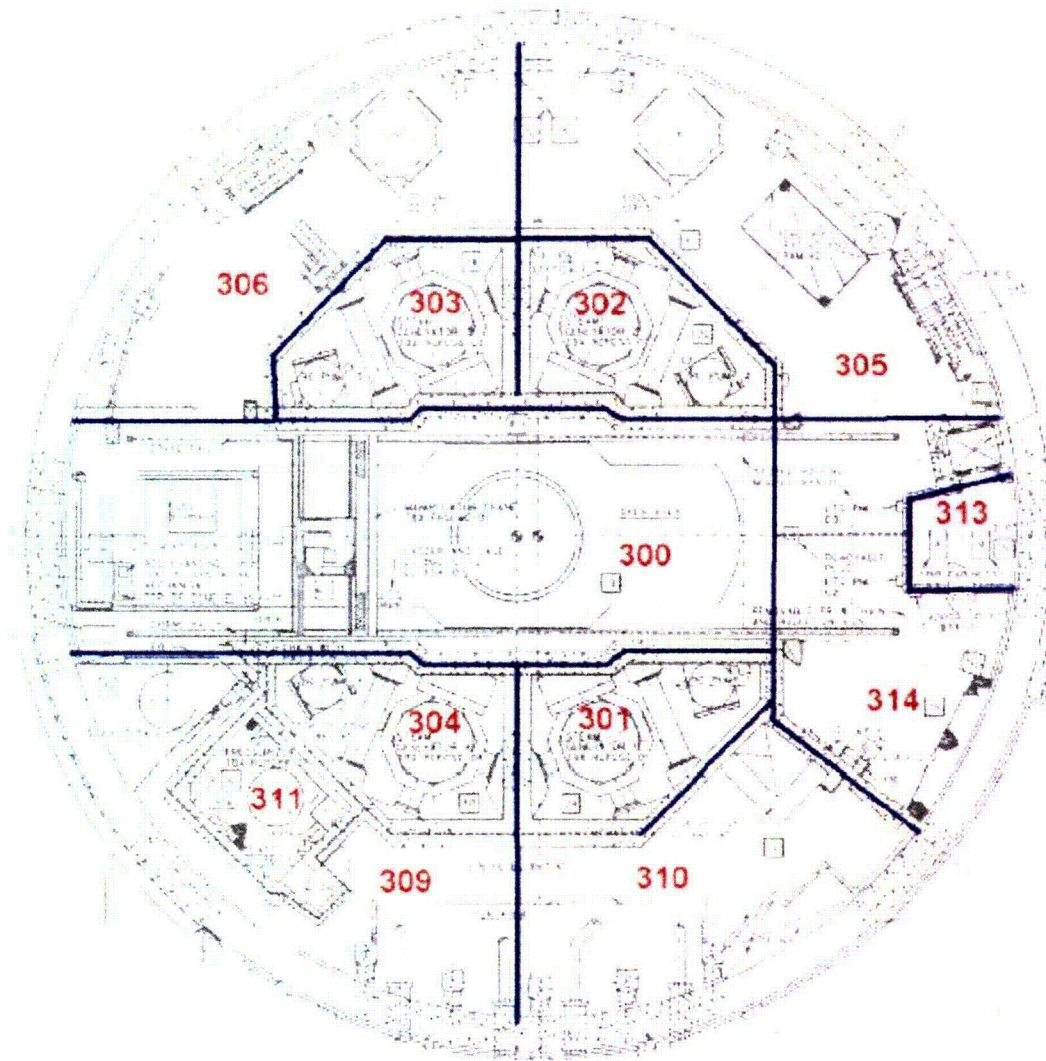


Figure 3.b-4 Zone Map El. 860'-0"

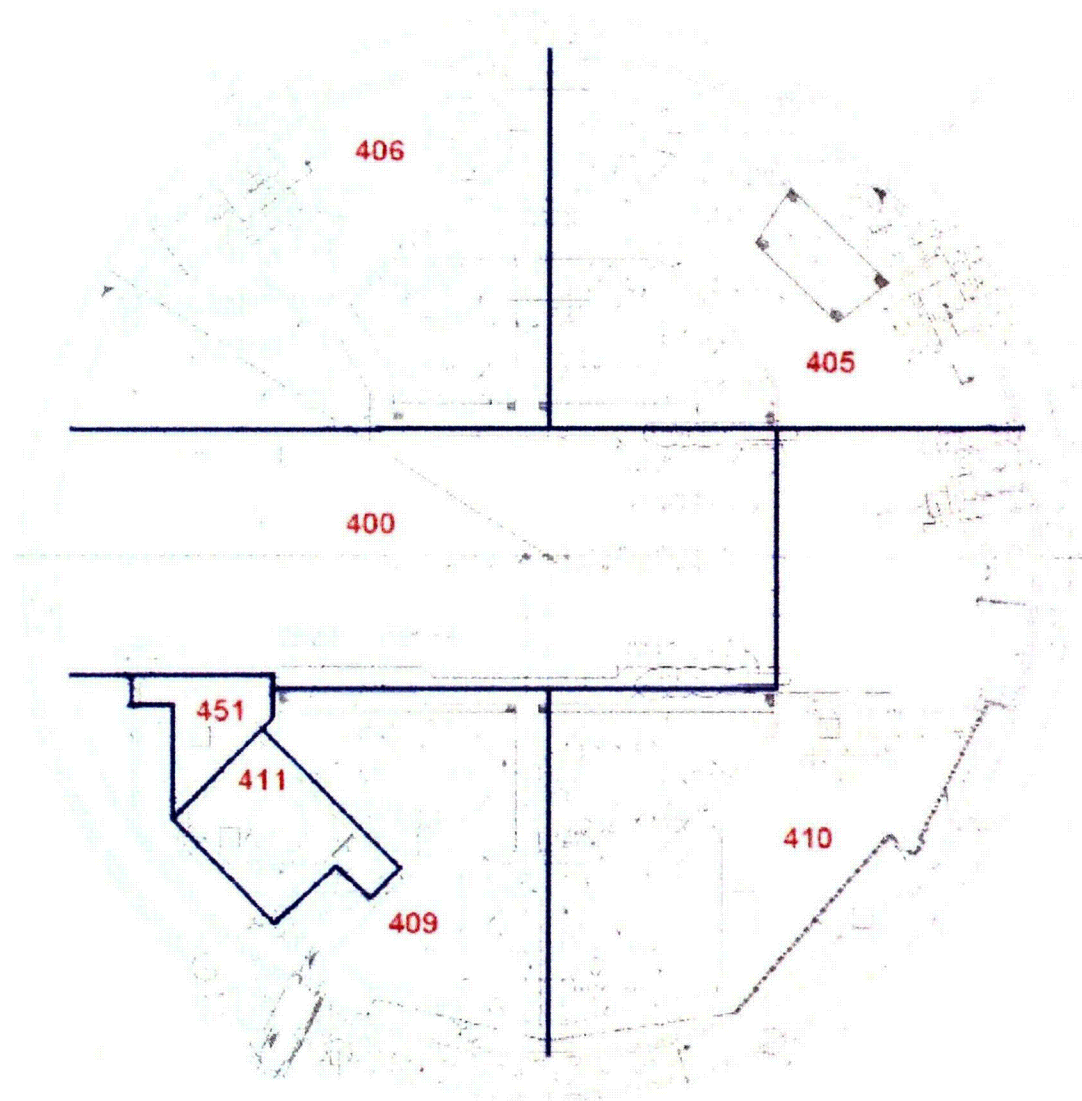


Figure 3.b-5 Zone Map El. 905'-9"

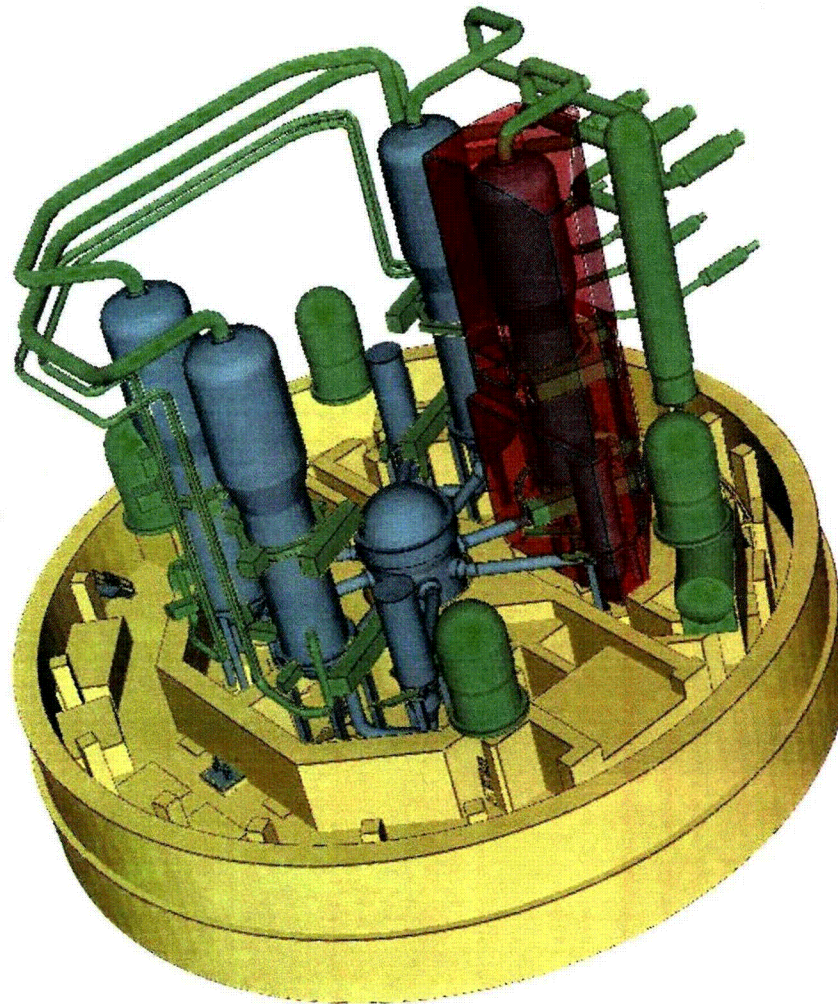


Figure 3.b-6 28.6D ZOI in Loop 4 Compartment

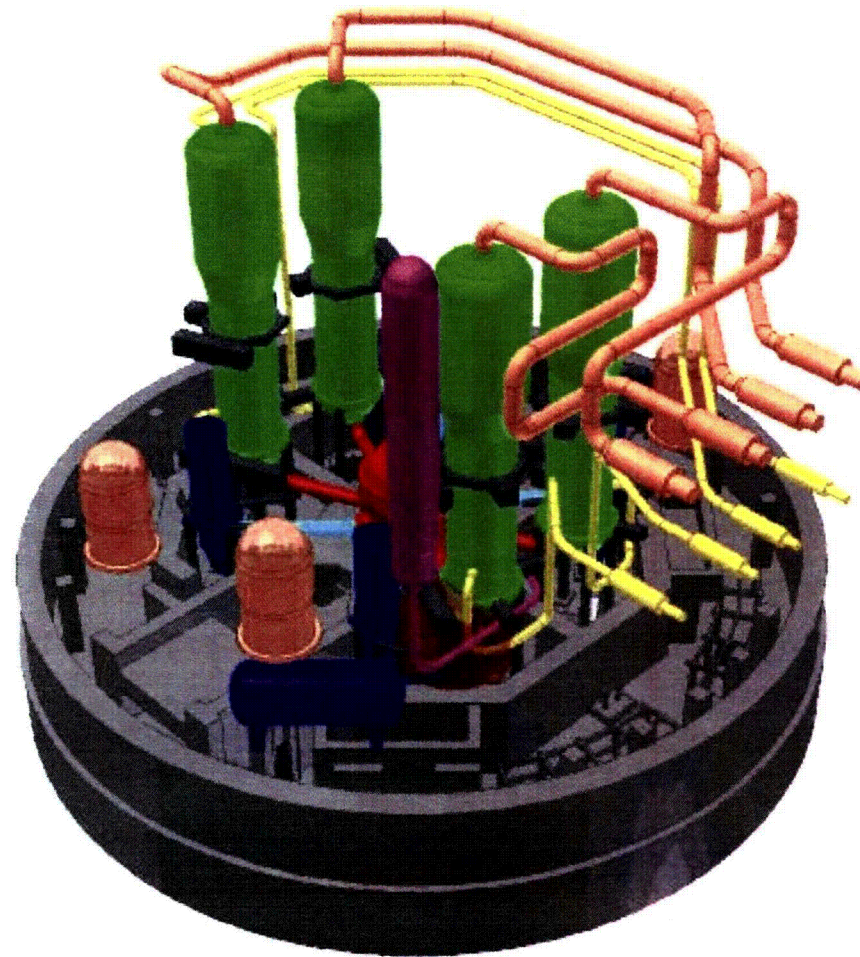


Figure 3.b-7 4.0D ZOI on Loop 4 Cross-Over Leg (Concrete Only)

Ø7-13-Ø6: Ø1
TXU “MIN-K” SAMPLE



Figure 3.c-1 Min-K Sample End View

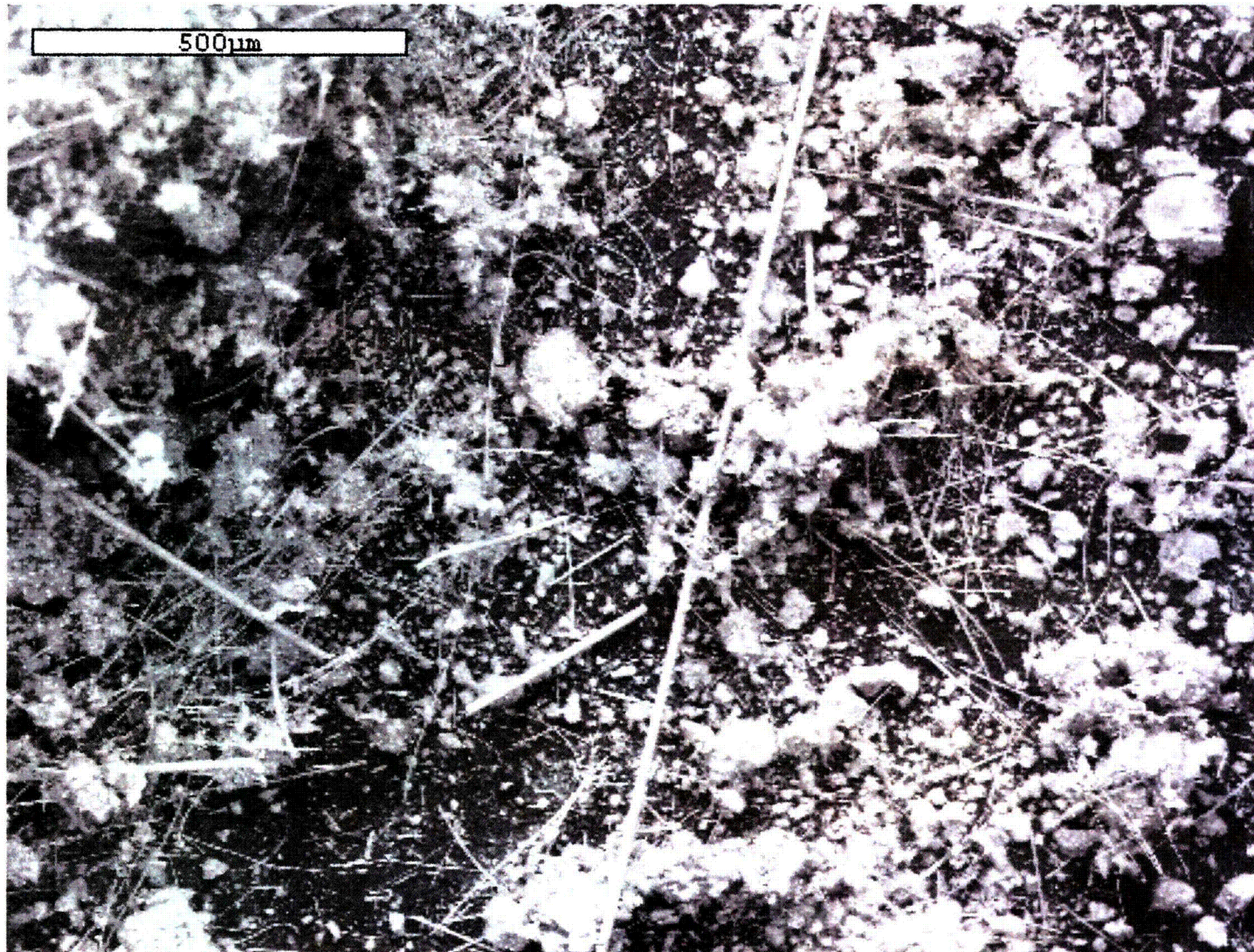


Figure 3.c-2 Min-K Sample at 80X

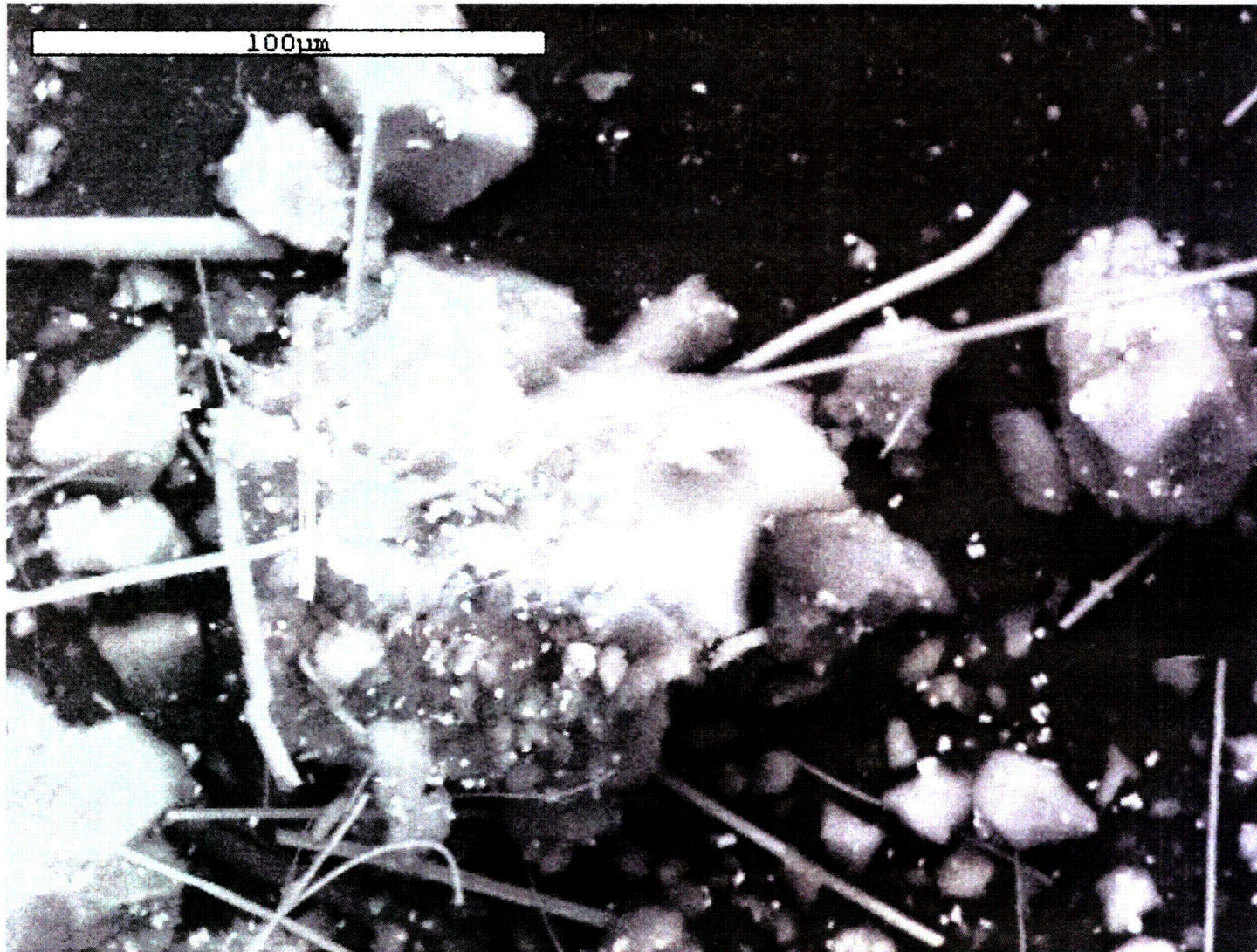


Figure 3.c-3 Min-K Sample at 2,500X

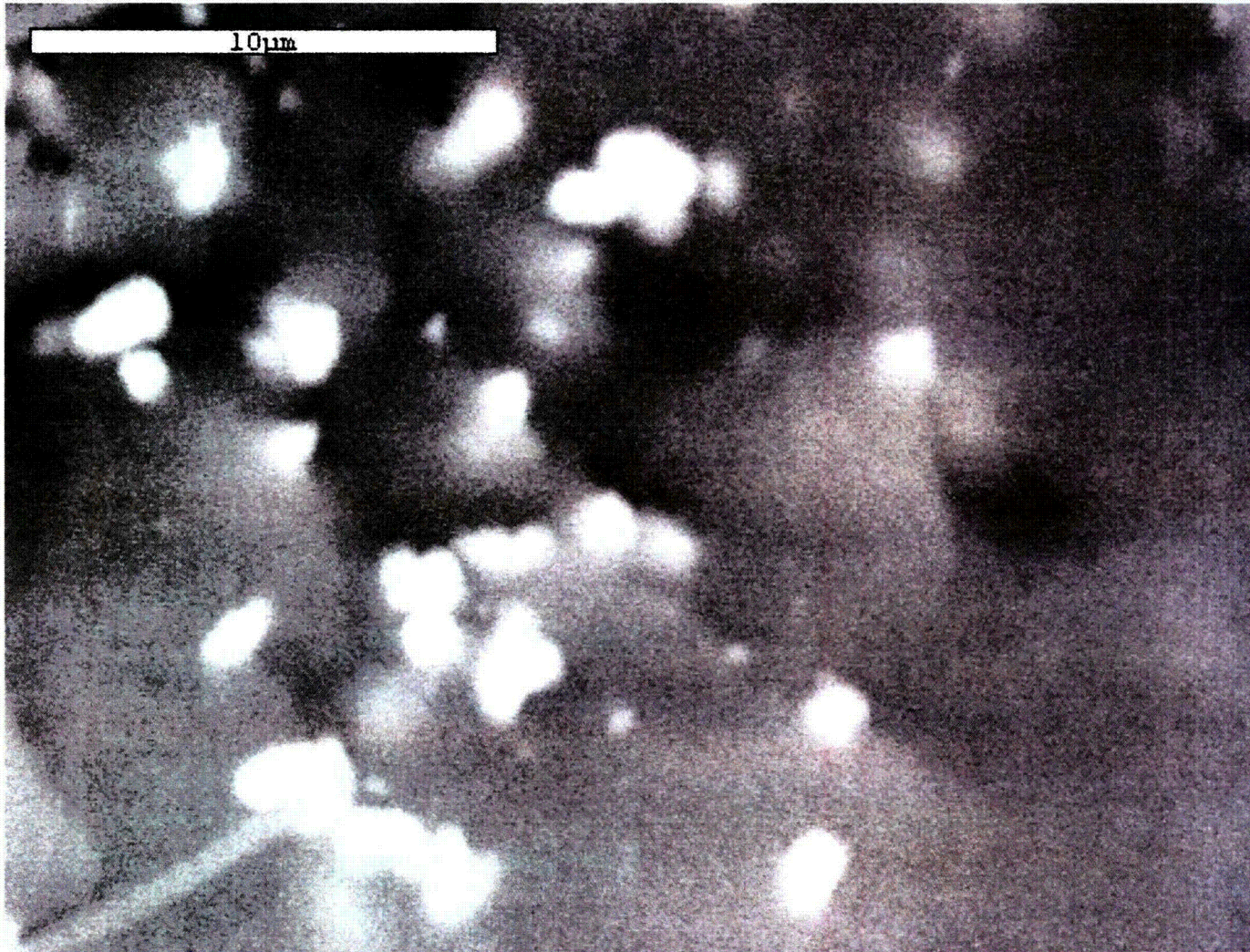


Figure 3.c-4 Min-K Sample at 5,000X Titanium Dioxide Particles

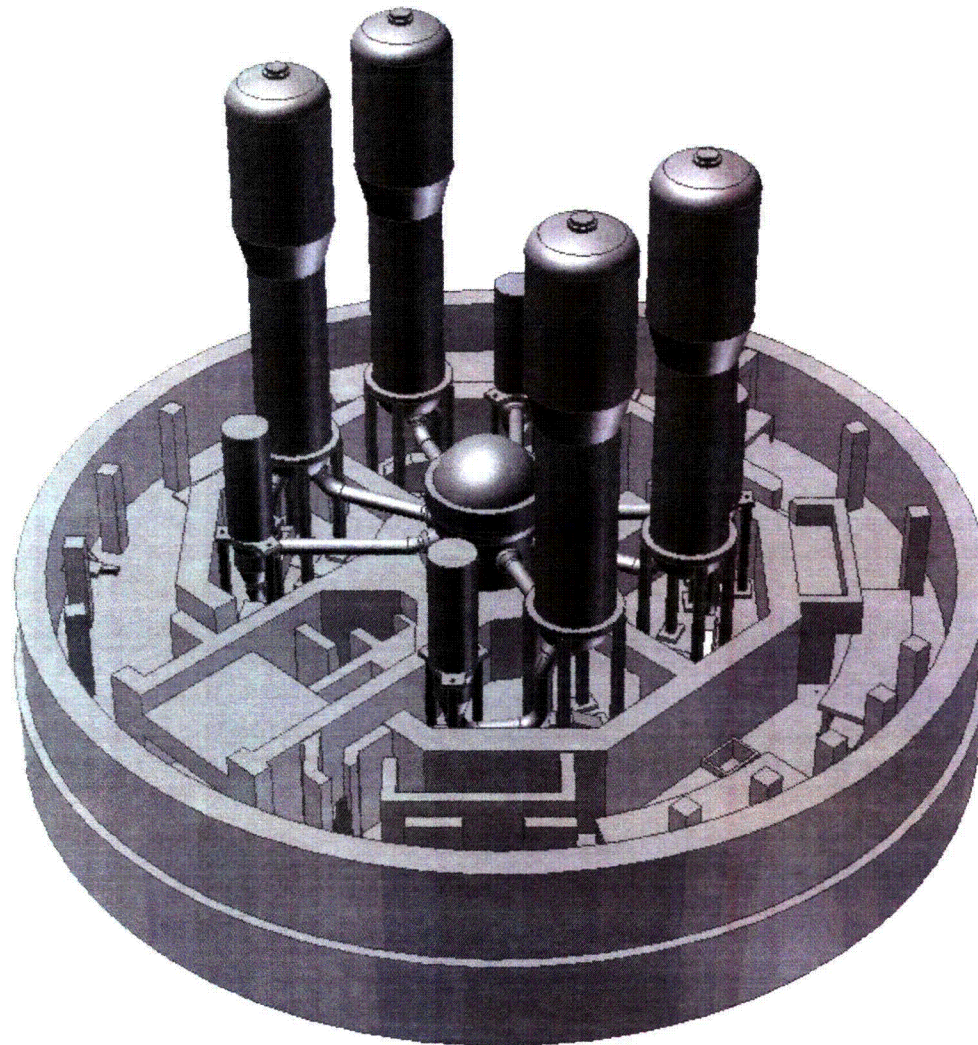


Figure 3.e-1 Northwest isometric view lower containment CAD model

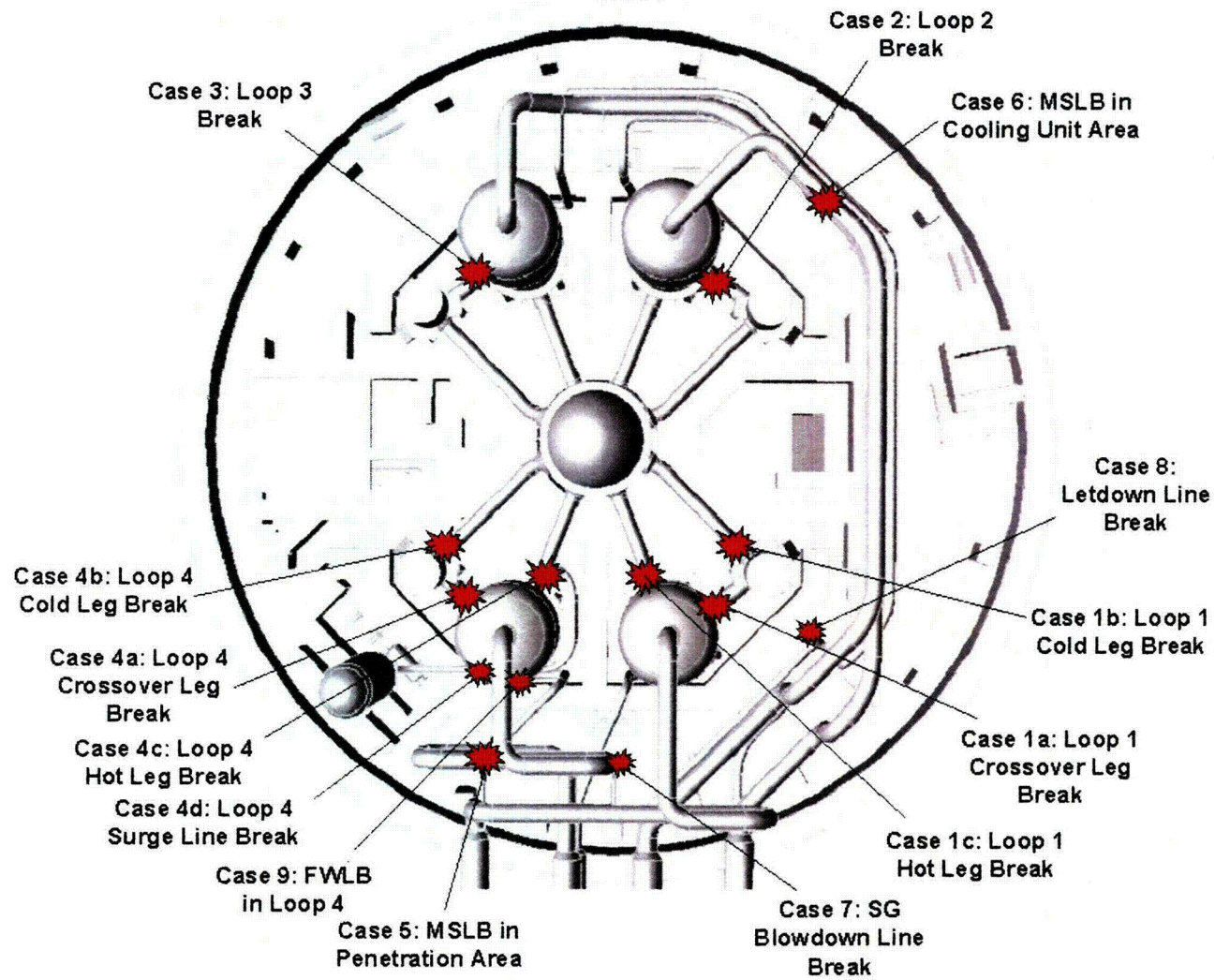


Figure 3.e-2 Postulated Break Locations

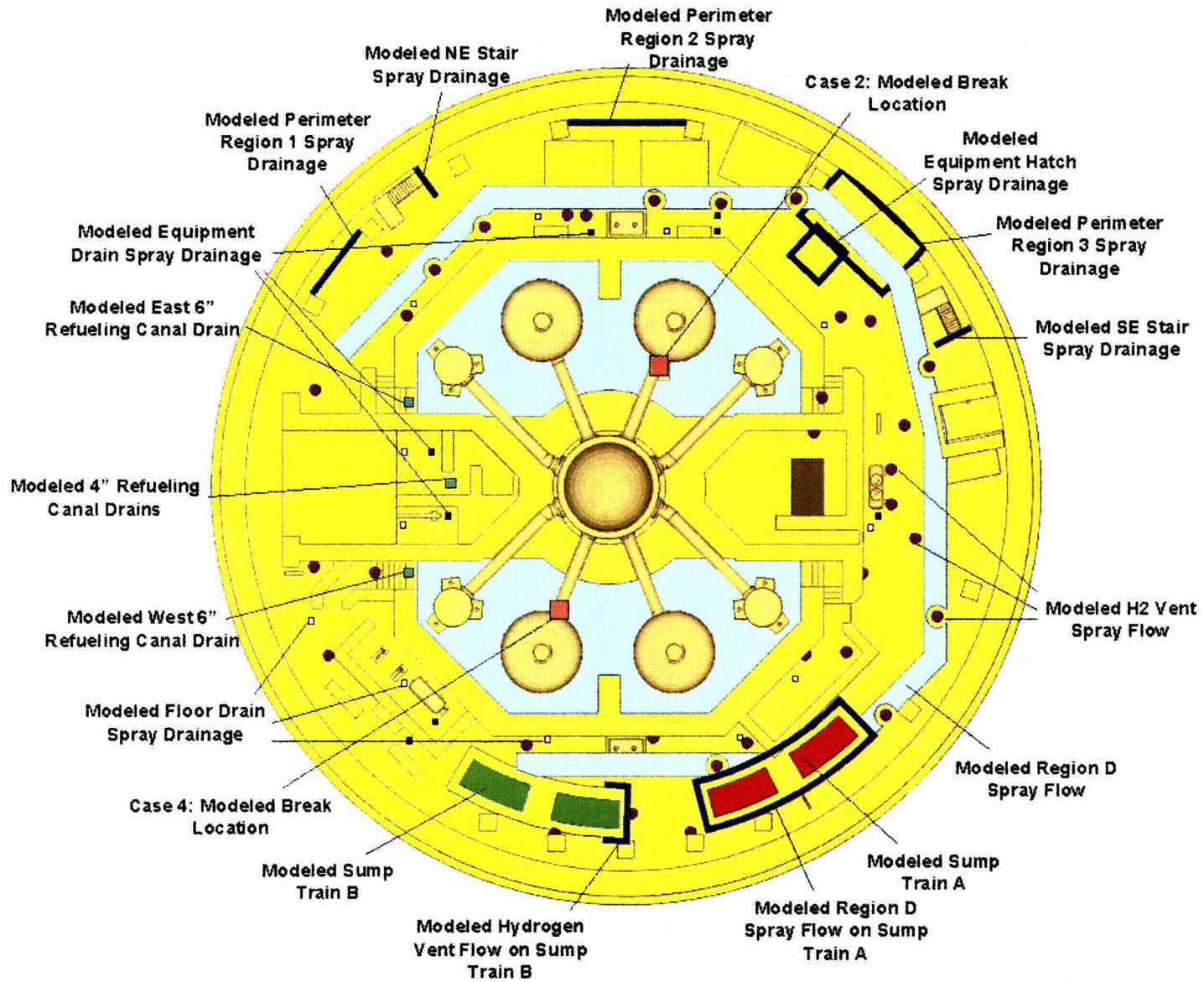


Figure 3.e-3 Diagram of significant features modeled

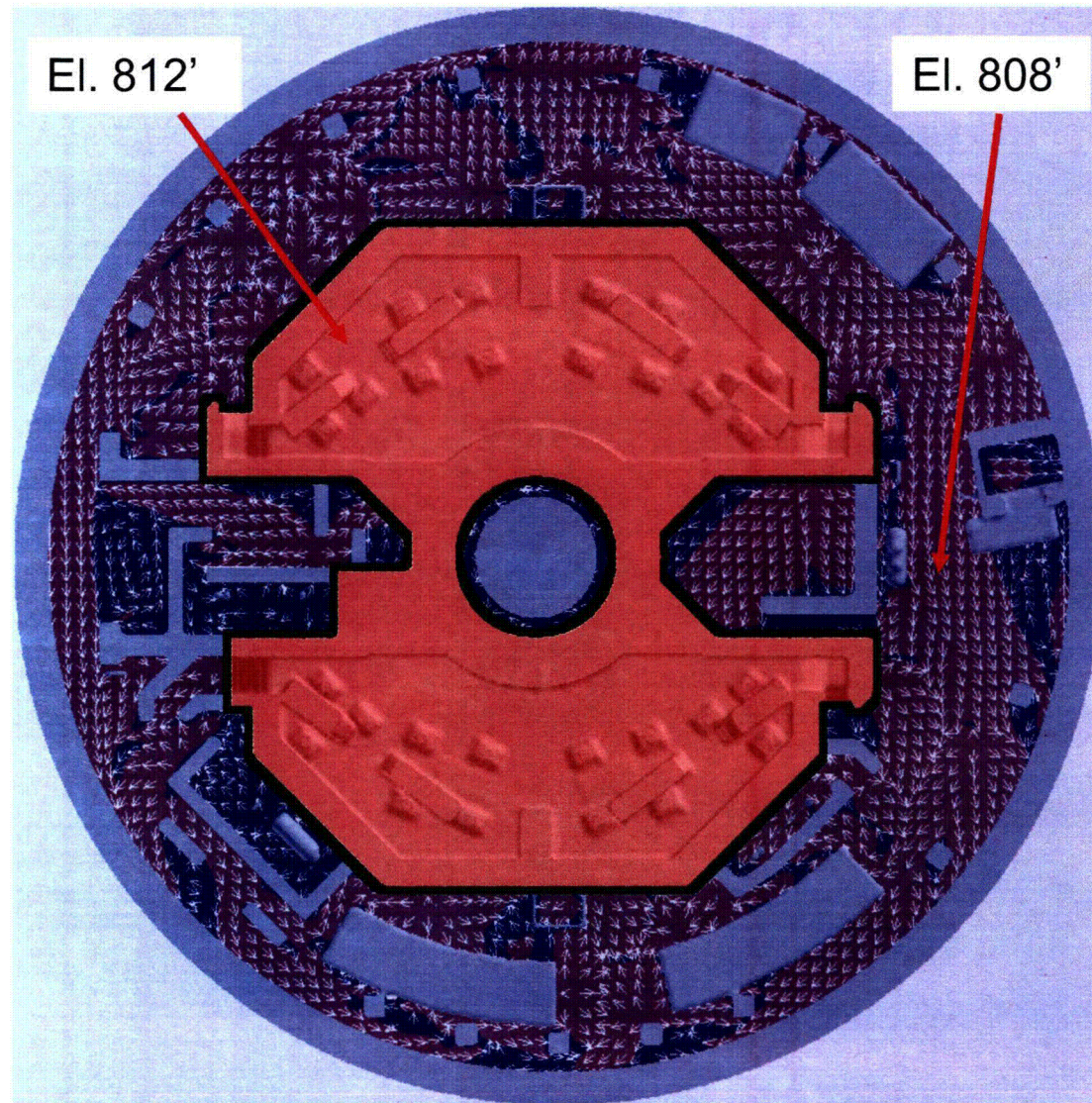


Figure 3.e-4 Illustration of distinct floor levels

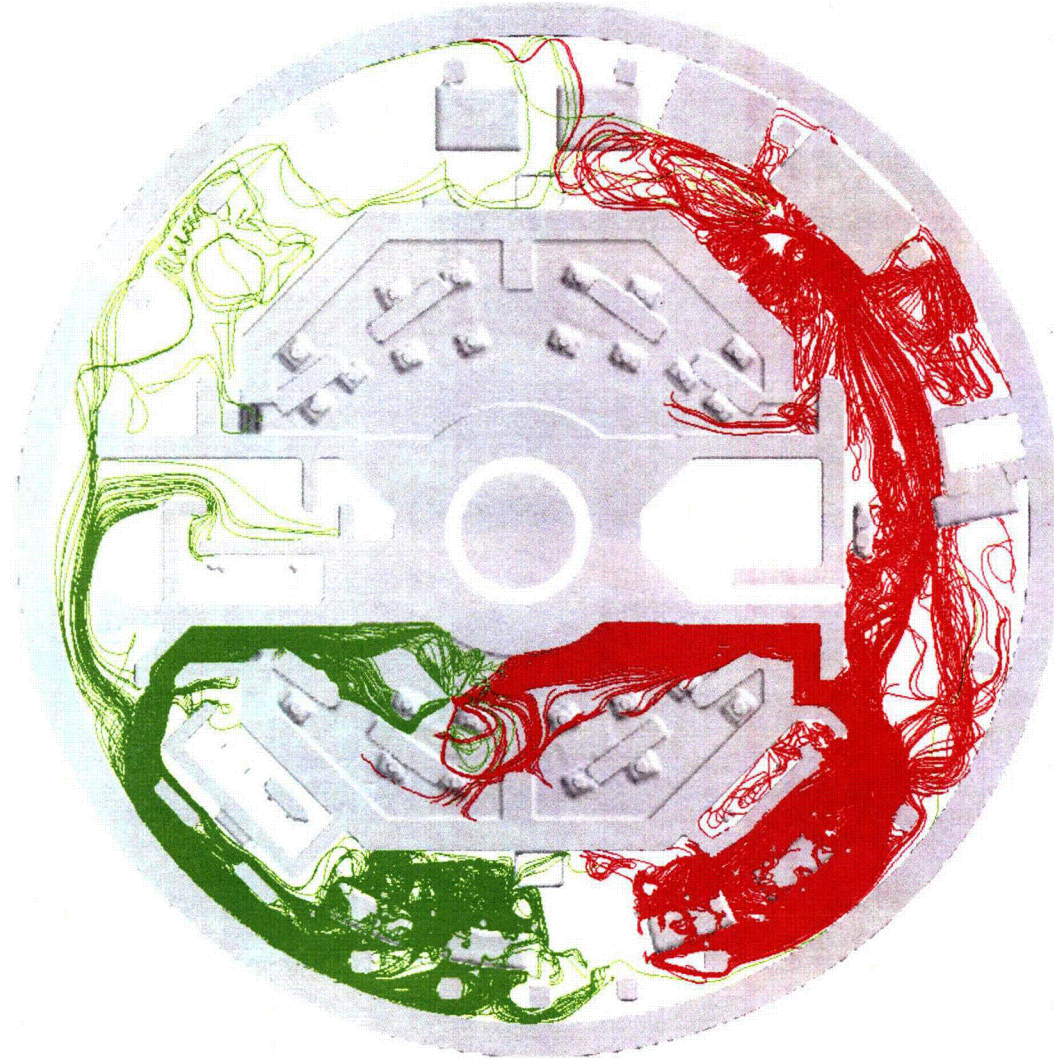


Figure 3.e-5 Streamlines showing water origination areas for each sump (Loop 4 LBLOCA, two trains)

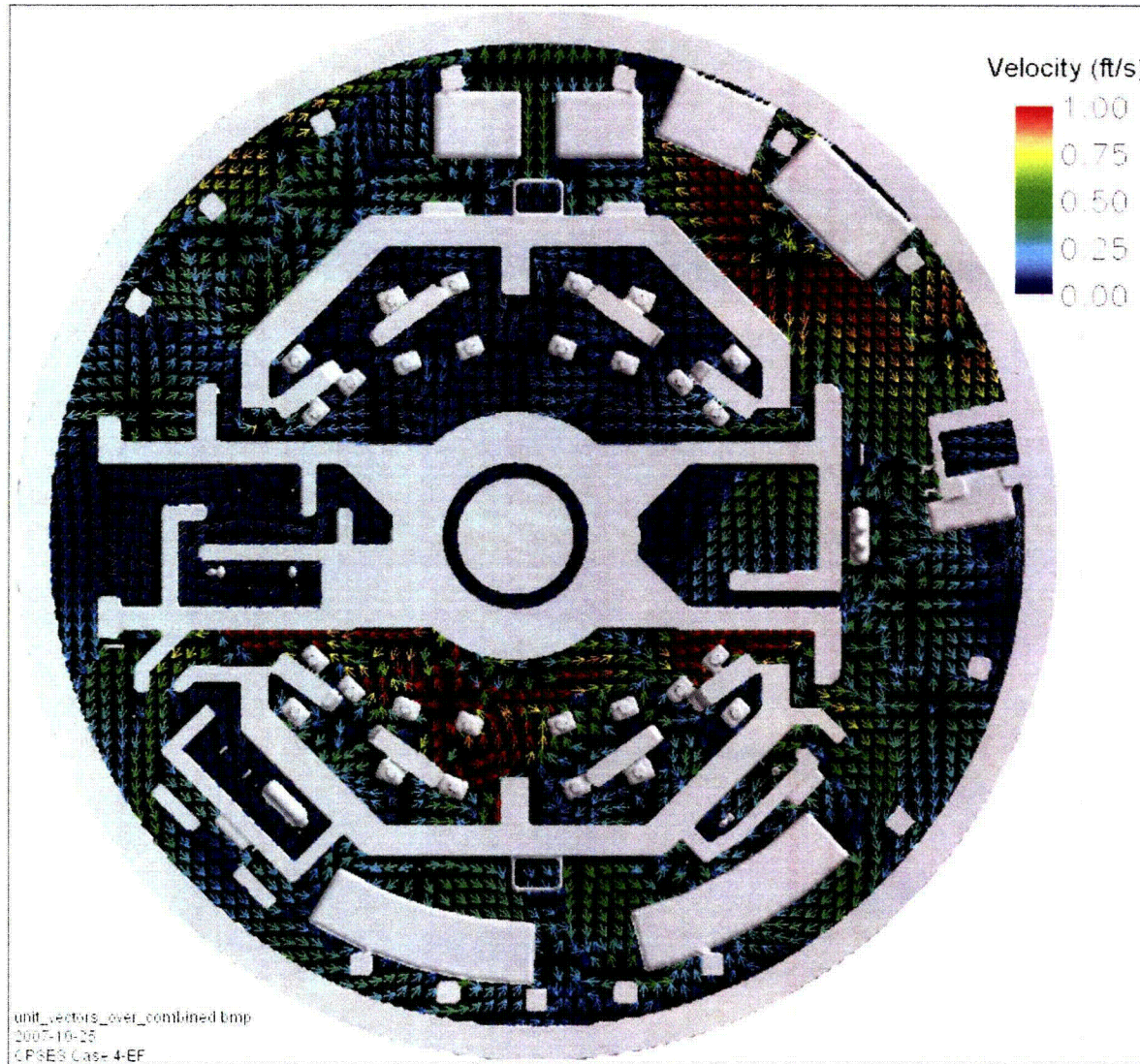


Figure 3.e-6 Vectors showing pool flow direction (Loop 4 LBLOCA Single Train Sump A)

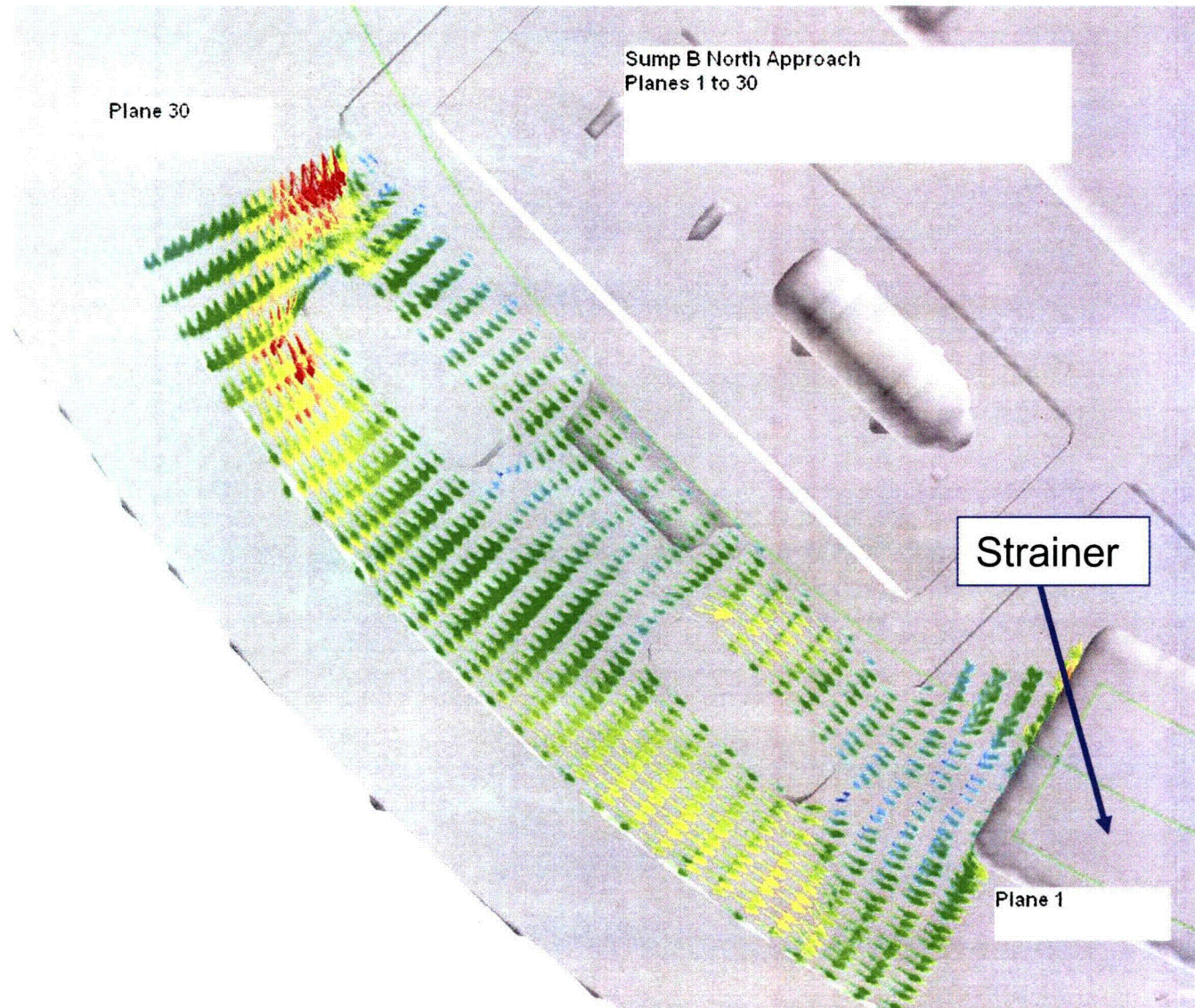


Figure 3.f-1 Cutting Planes for Test Flume Modeling

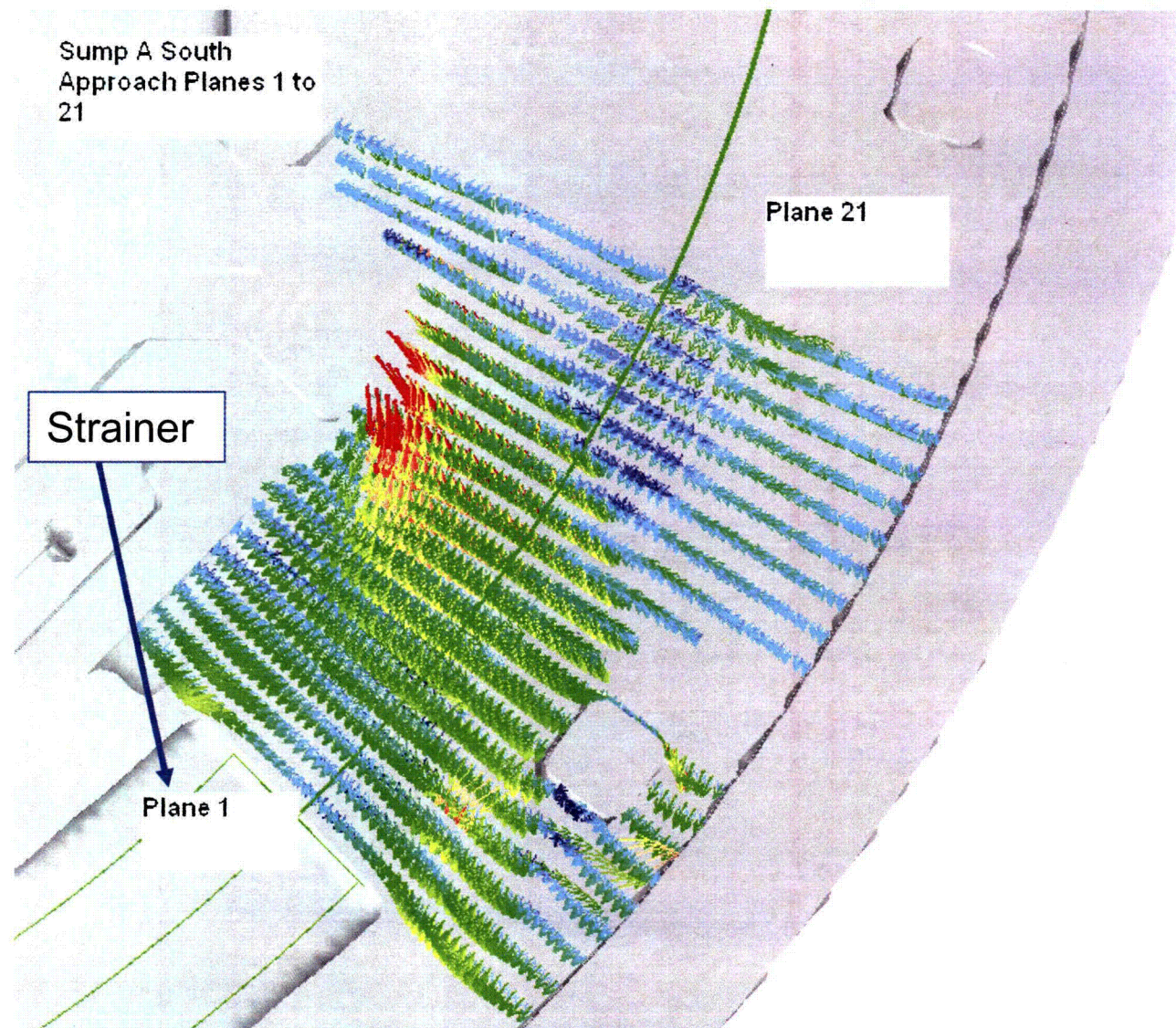


Figure 3.f-2 Cutting Planes for Test Flume Modeling