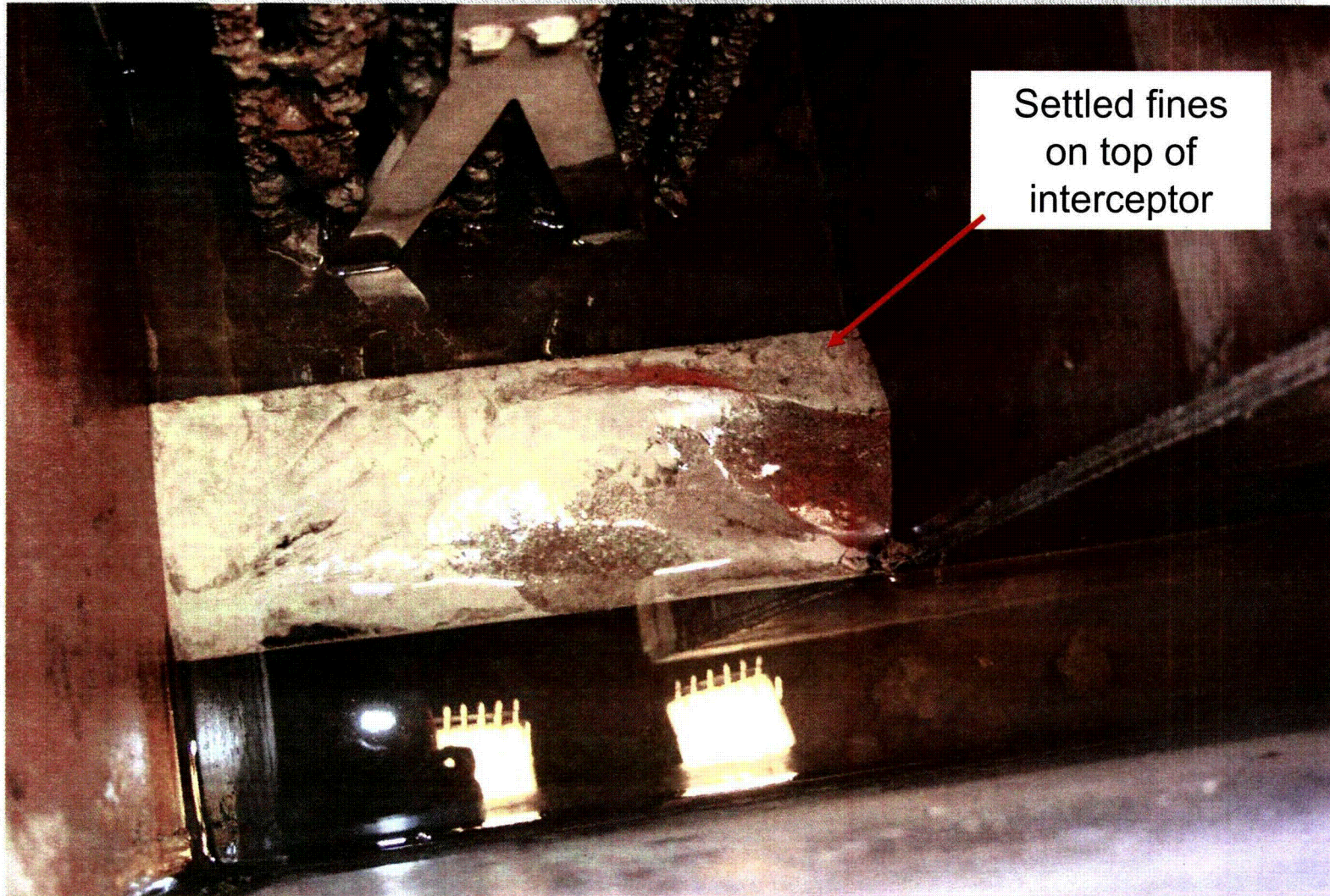


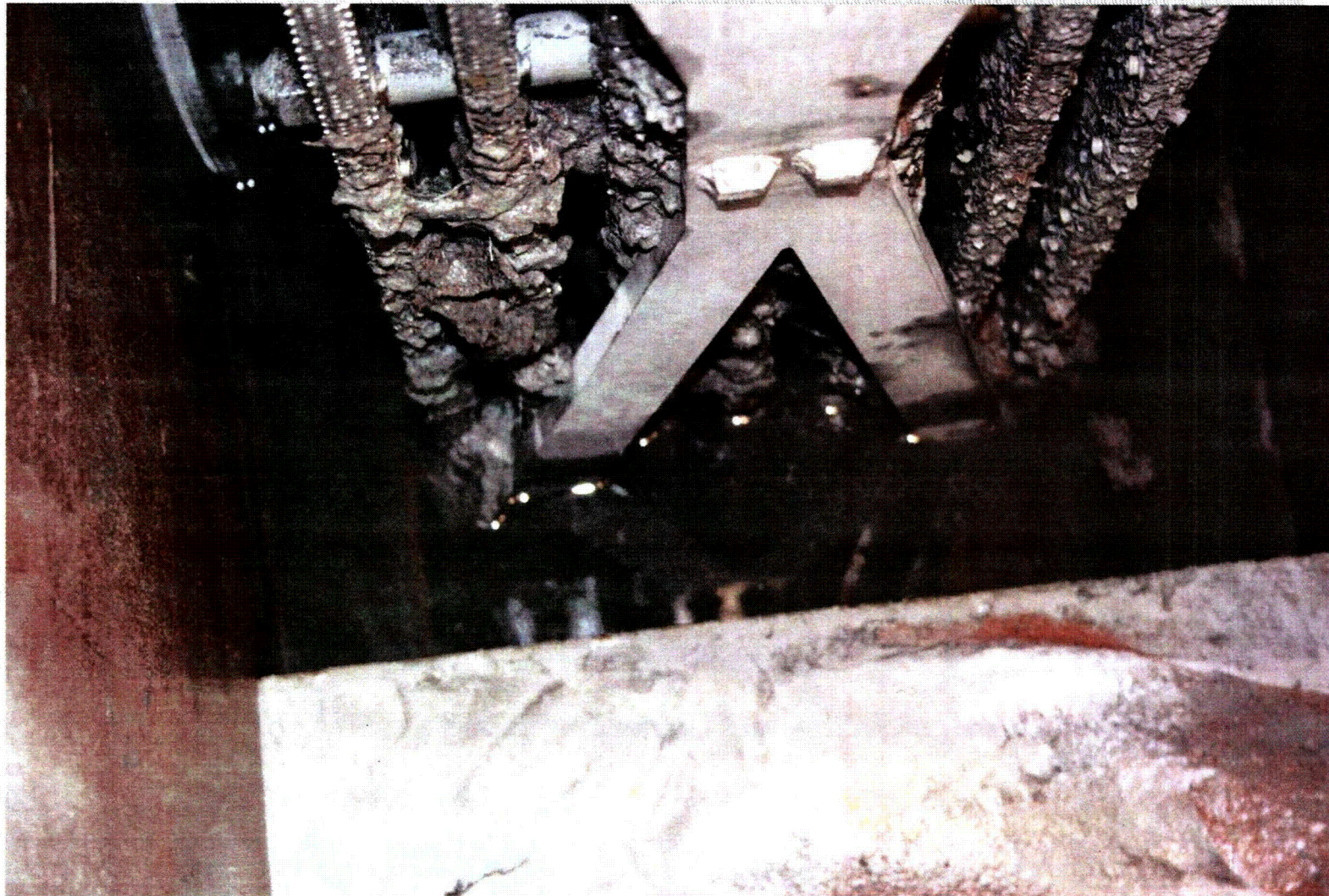
Headloss test – drain down complete



Settled fines
on top of
interceptor

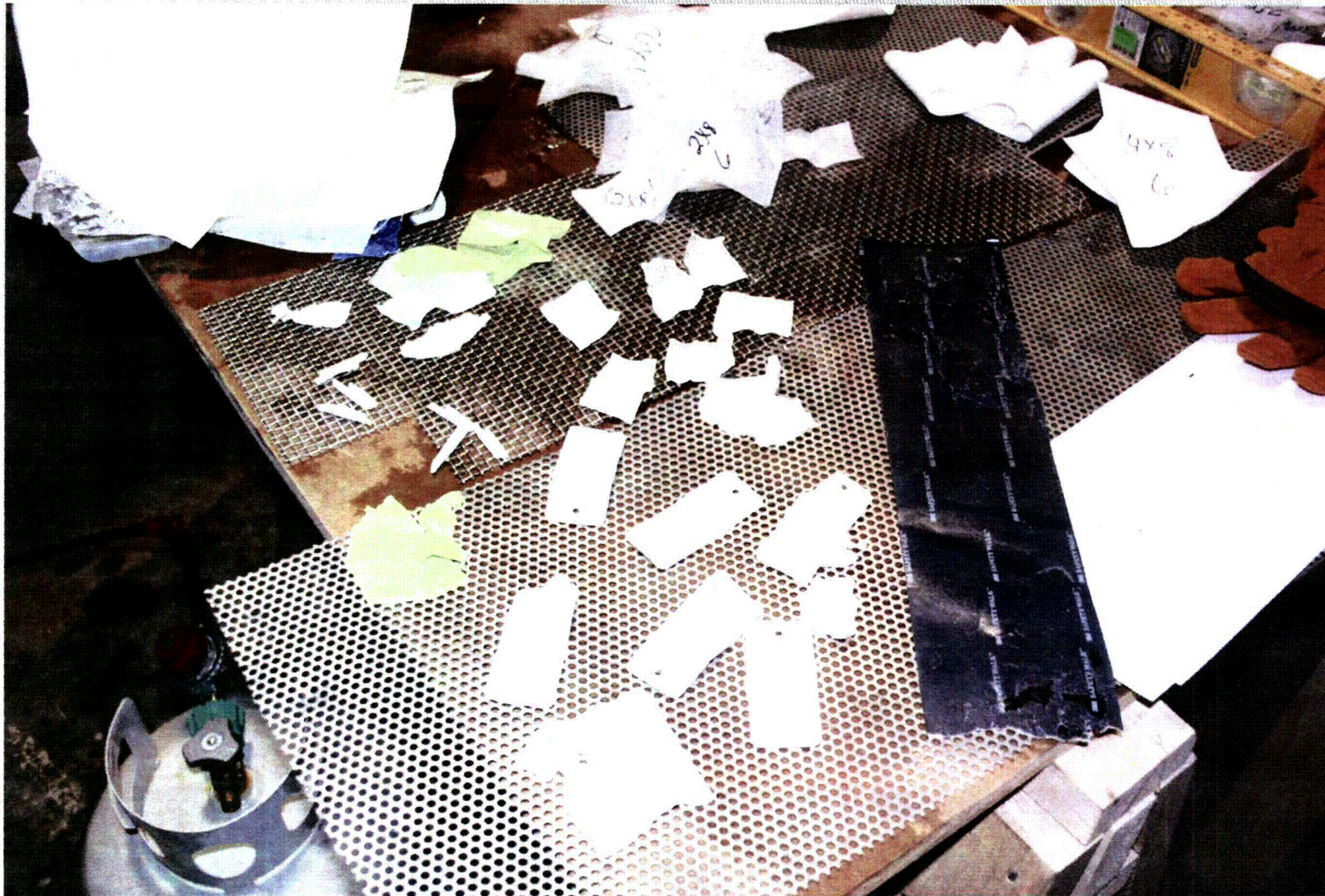
Test 4 Headloss

Headloss test – drain down complete



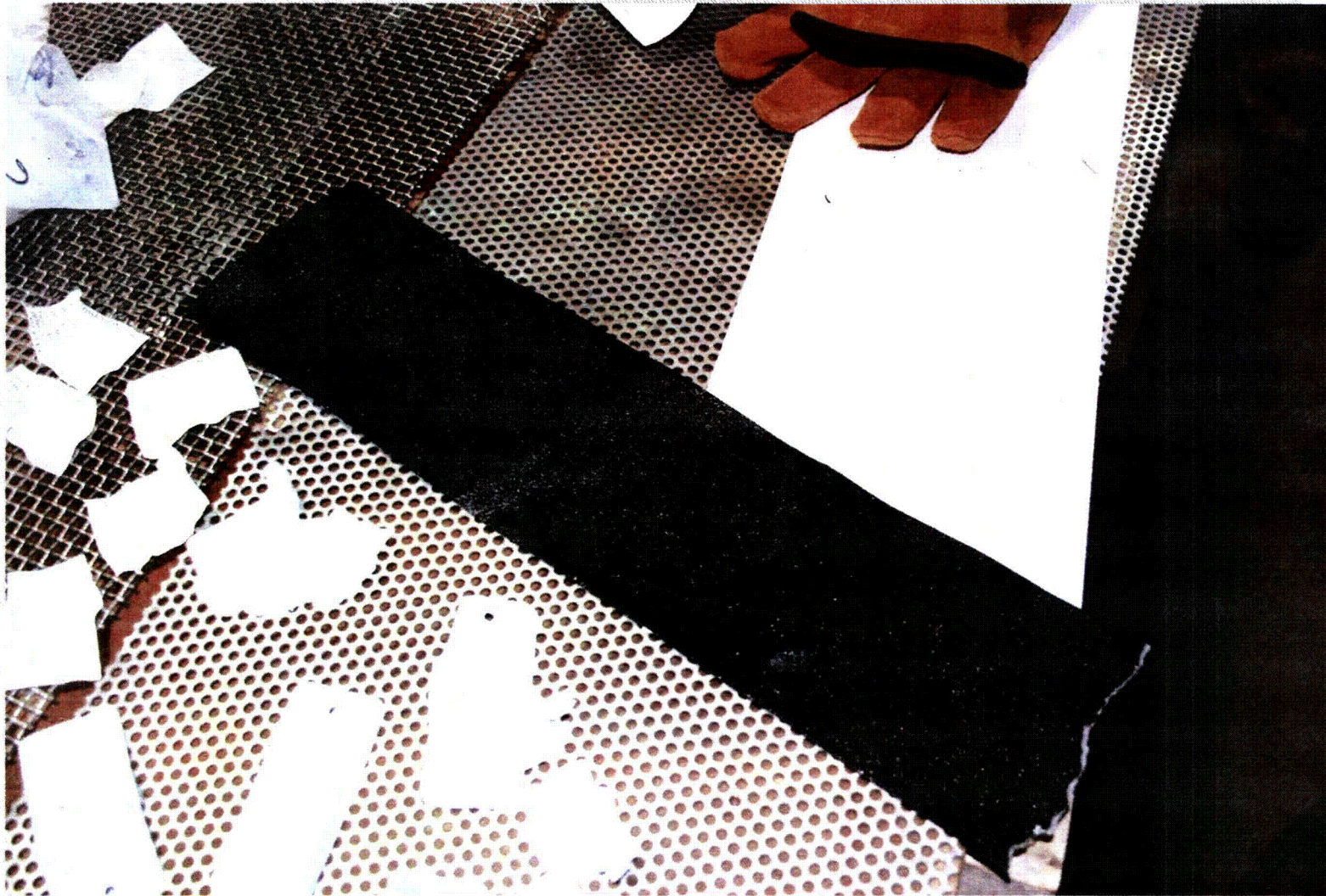
Test 4 Headloss

Debris preparation



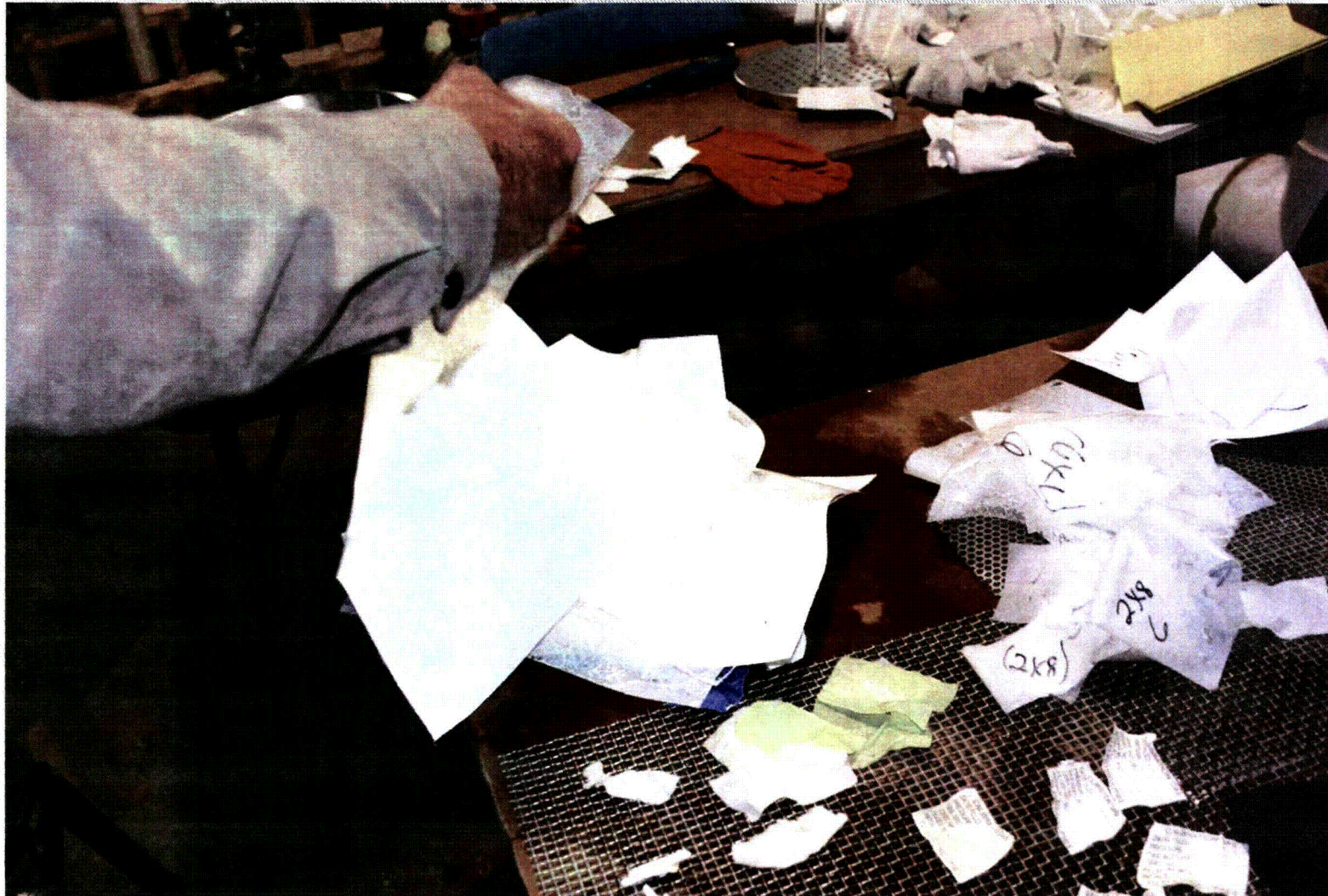
Test 6 Labels and Misc

Debris preparation



Test 6 Labels and Misc

Debris preparation



Test 6 Labels and Misc

Debris preparation



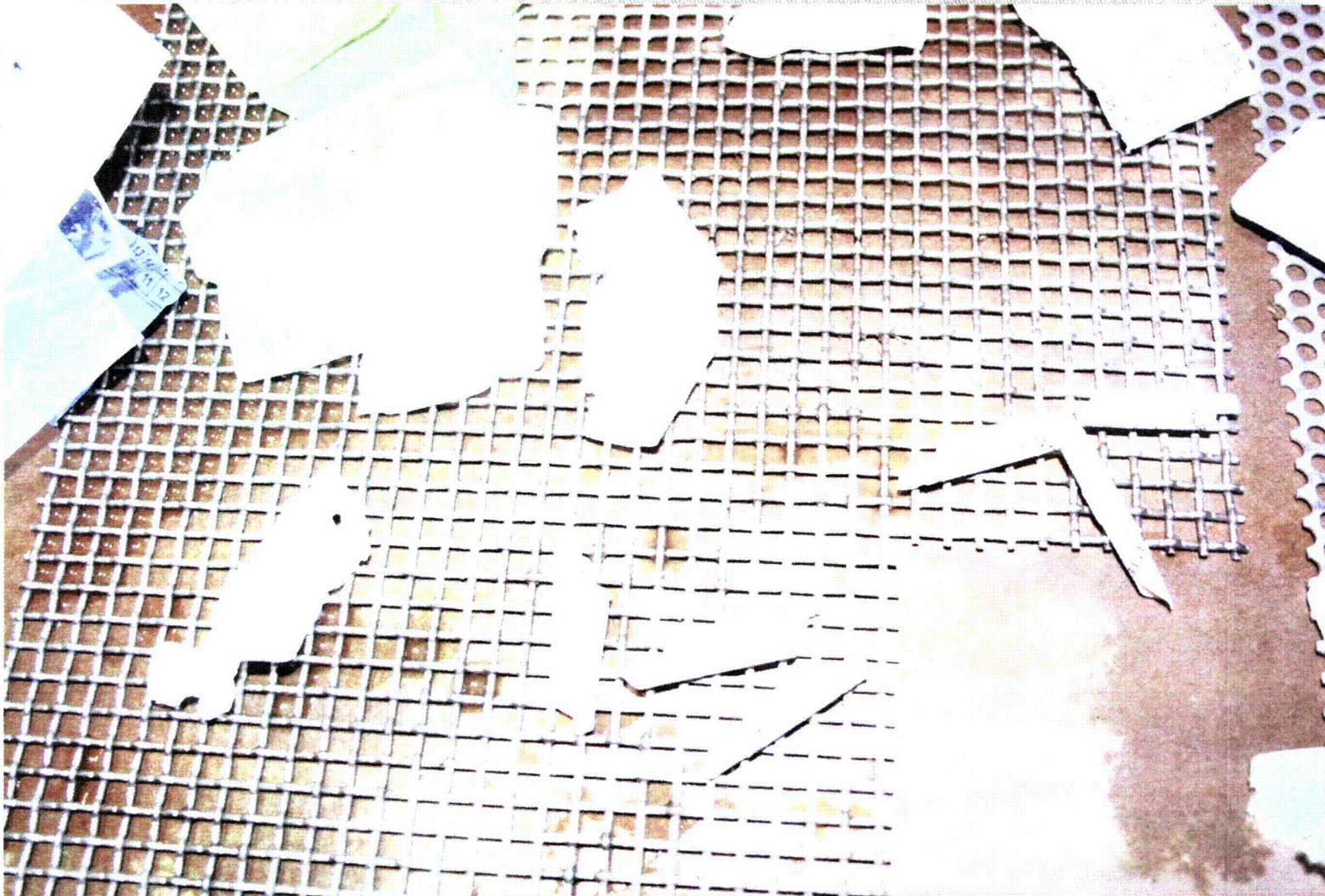
Test 6 Labels and Misc

Debris preparation – TSN paper labels failed boiling test.



Test 6 Labels and Misc

Debris preparation



Test 6 Labels and Misc

Debris preparation



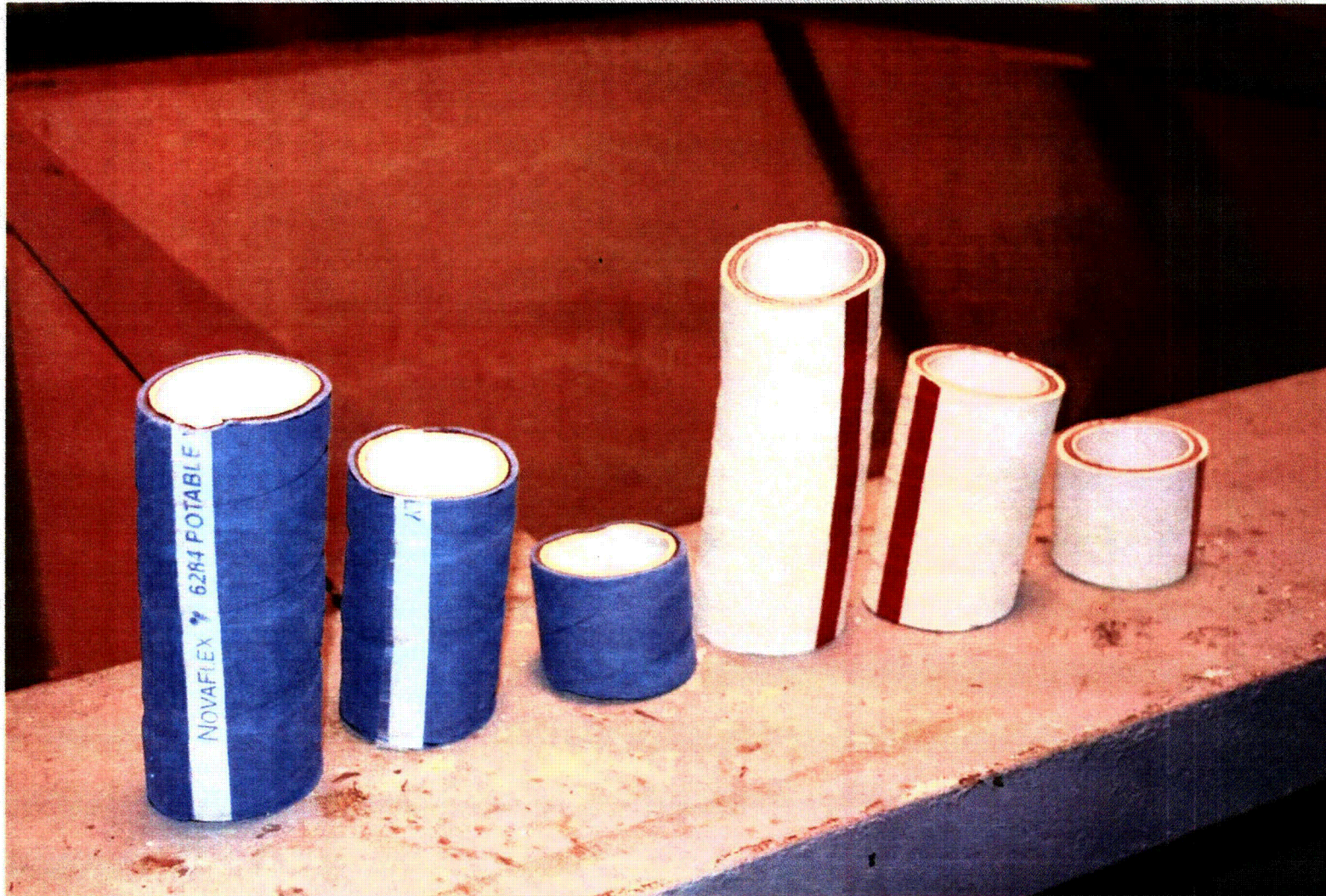
Test 6 Labels and Misc

Debris preparation



Test 6 Labels and Misc

Debris transport test – 2" RCP oil collection drain hoses



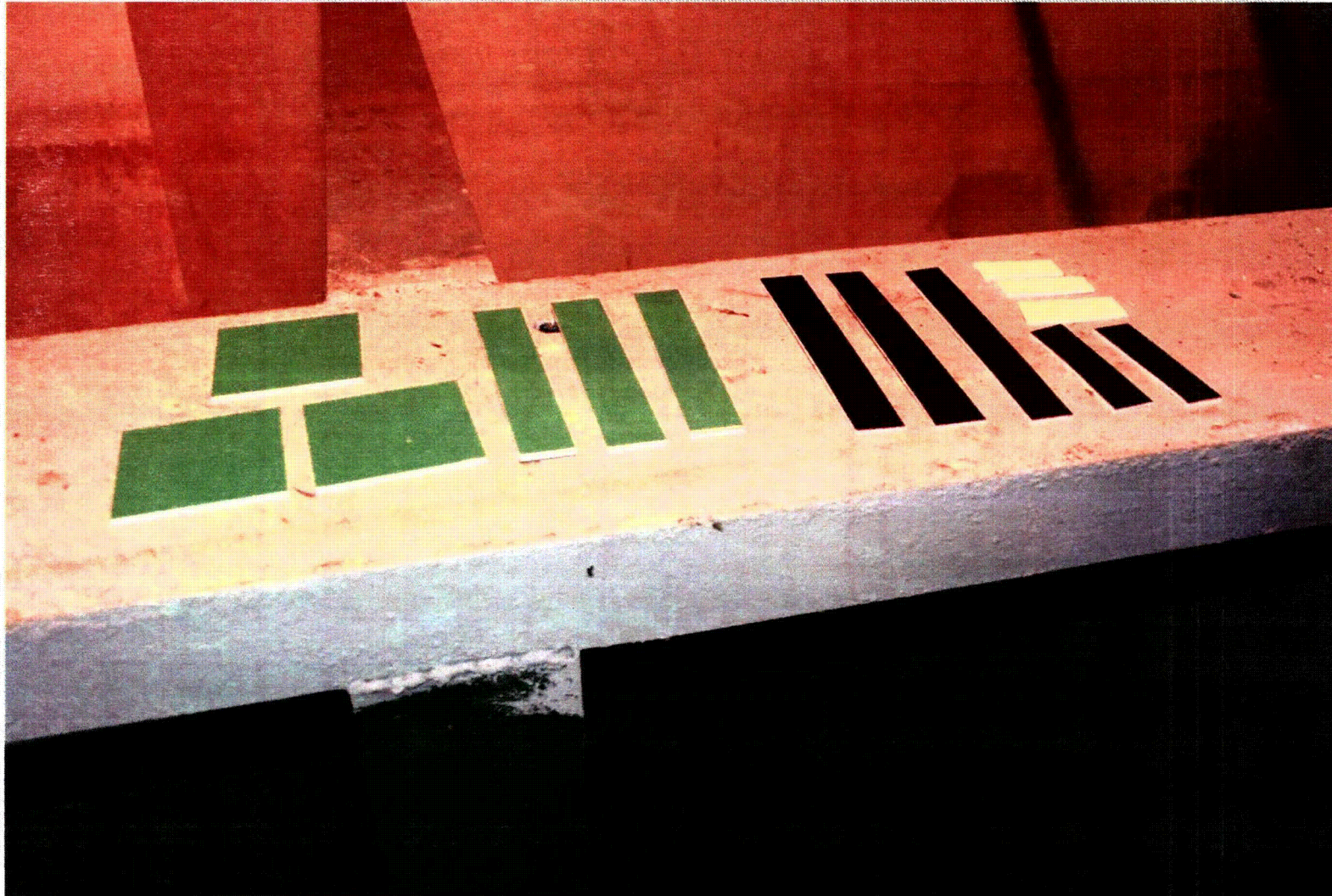
Test 6 Labels and Misc

Debris transport test – tye wraps



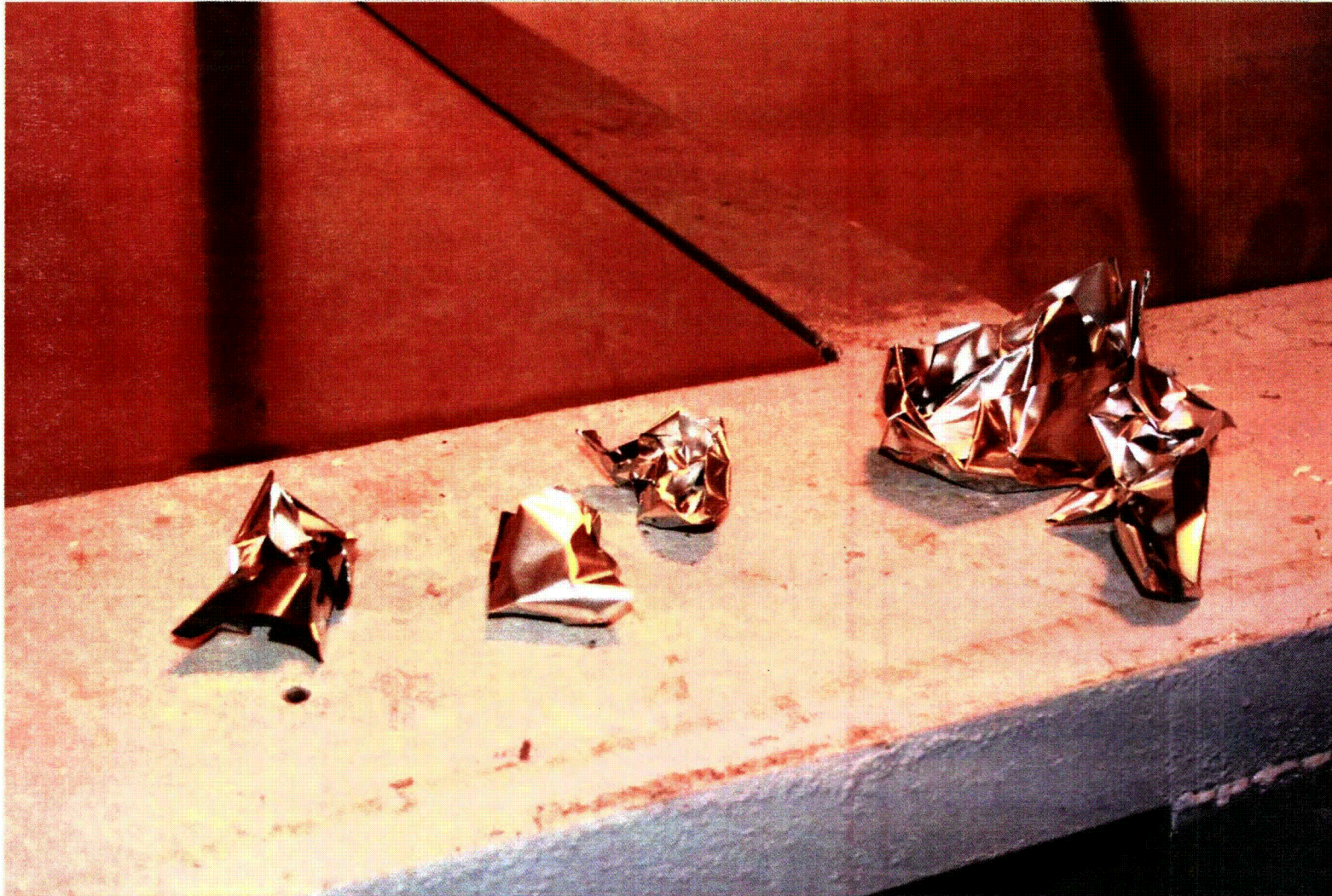
Test 6 Labels and Misc

Debris transport test – lamacoid



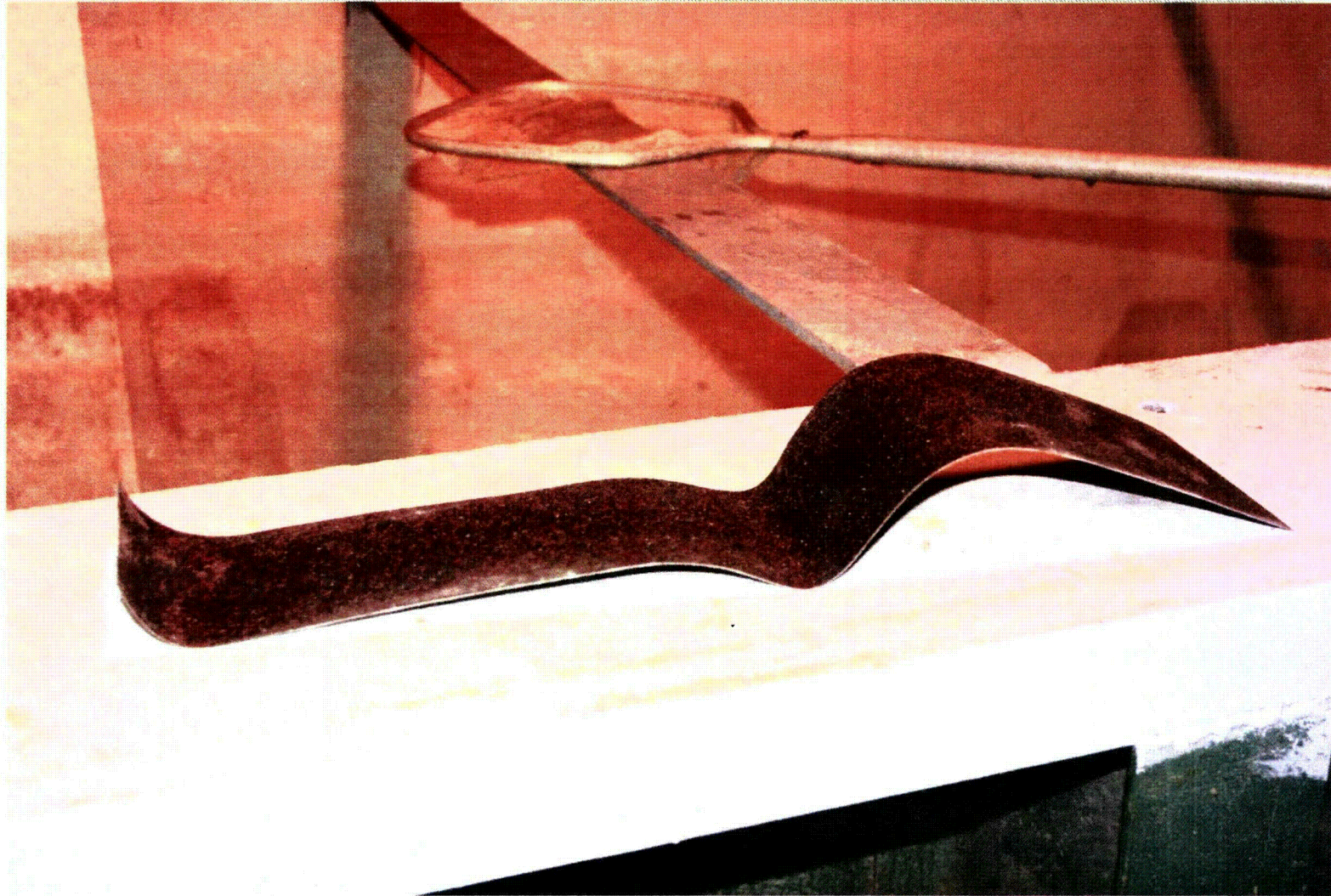
Test 6 Labels and Misc

Debris transport test – RMI larges



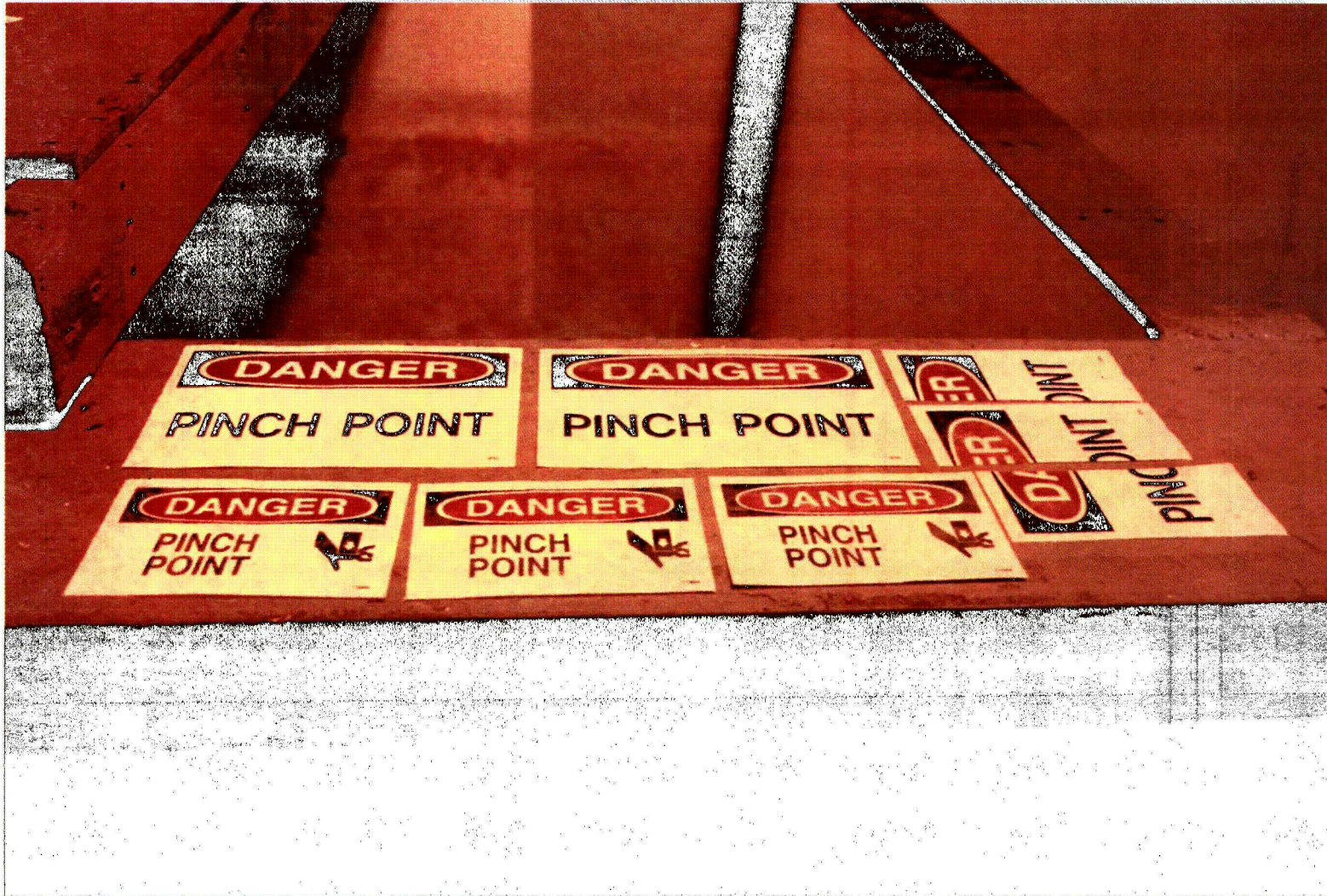
Test 6 Labels and Misc

Debris transport – non-skid strips



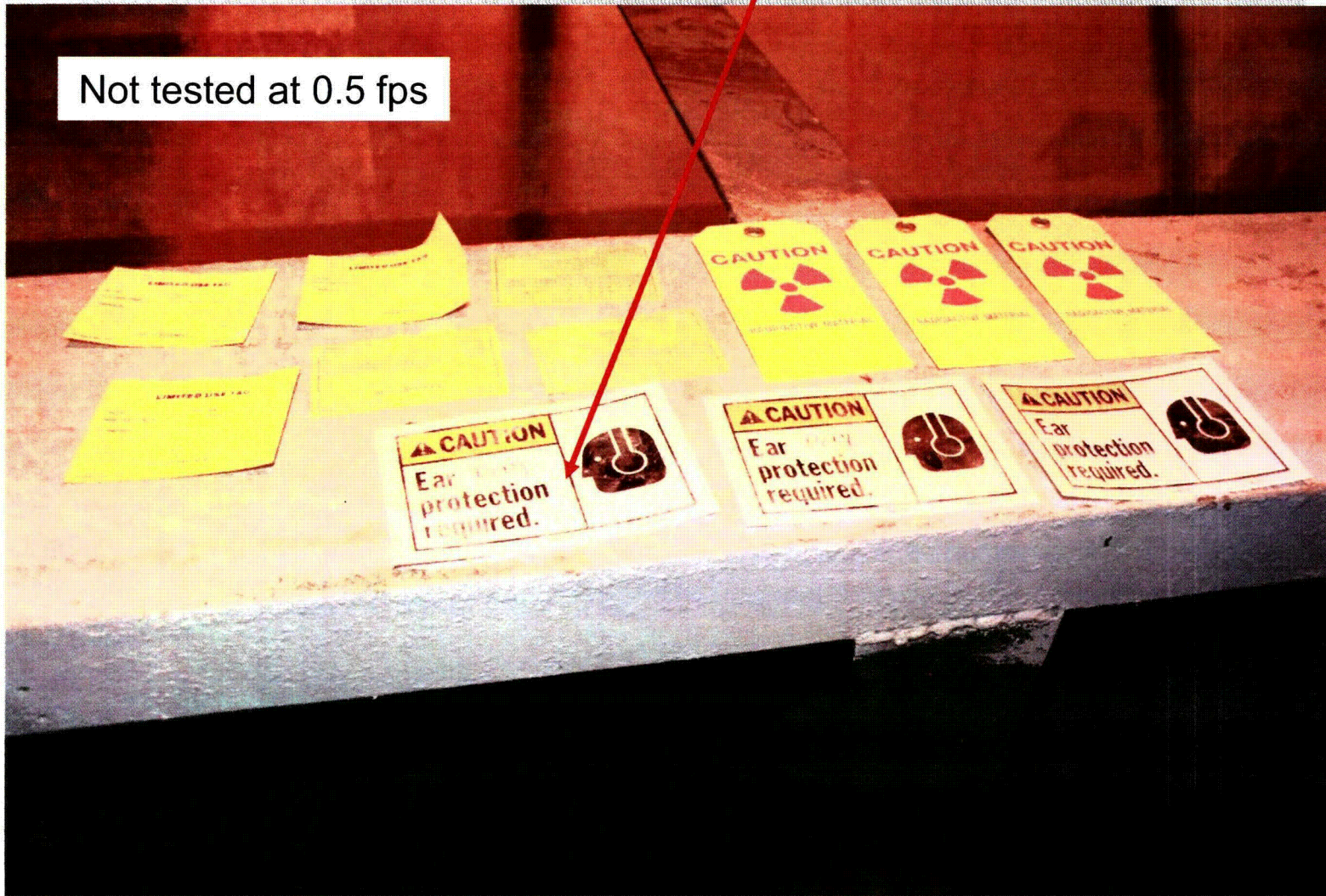
Test 6 Labels and Misc

Debris transport test – danger labels [failed at 0.5 fps]



Test 6 Labels and Misc

Debris transport test – labels [caution tags failed at 0.5 fps]



Test 6 Labels and Misc

Debris transport test – locked valve tags



Test 6 Labels and Misc

Debris transport test – labels and tags



Test 6 Labels and Misc

Debris transport test – labels and tags



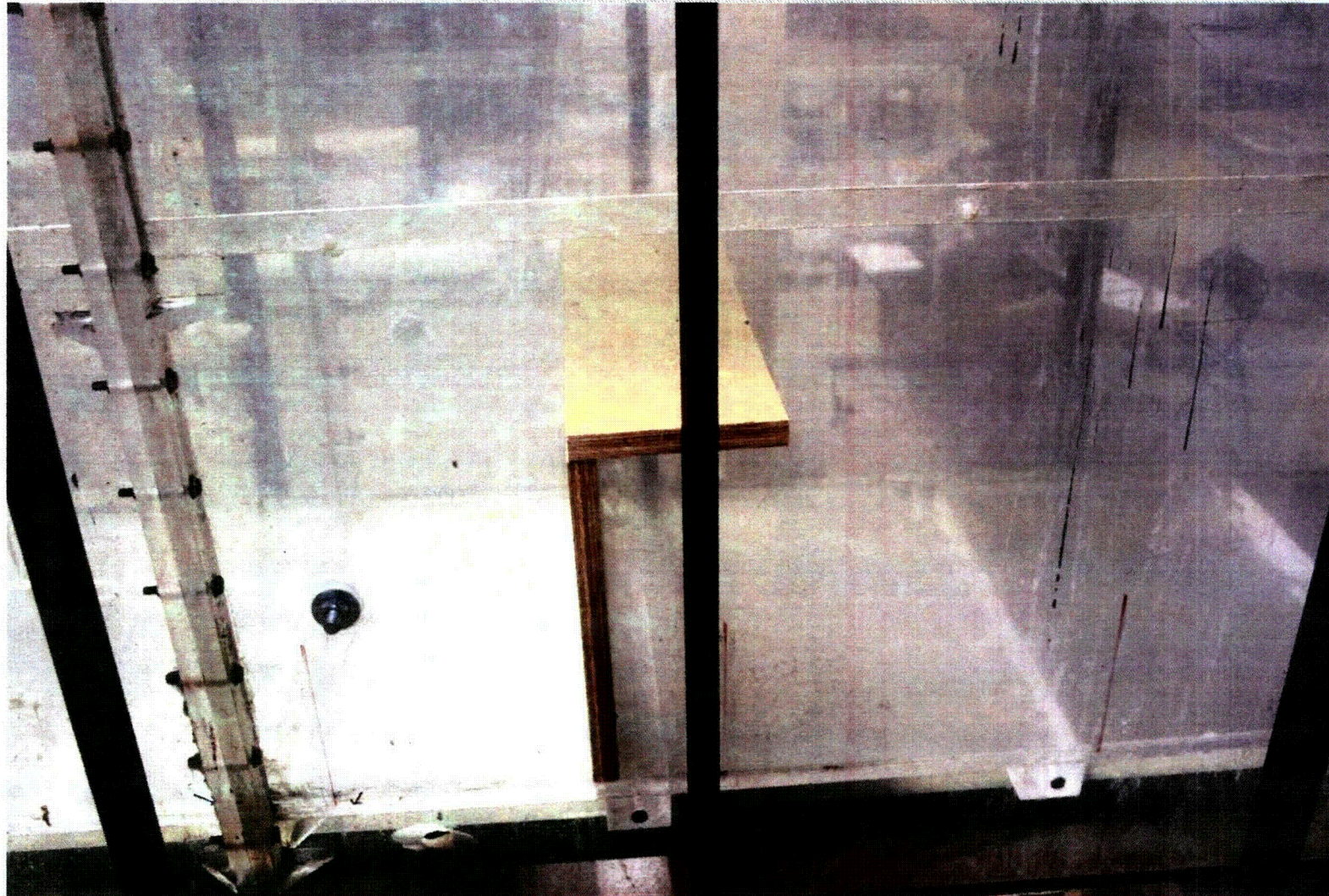
Test 6 Labels and Misc

Debris transport test – labels and tags



Test 6 Labels and Misc

Debris transport test – 12 inch tall interceptor – flow set at 0.1 fps



Test 6 Labels and Misc

Debris transport test – Series 1000 labels and tags



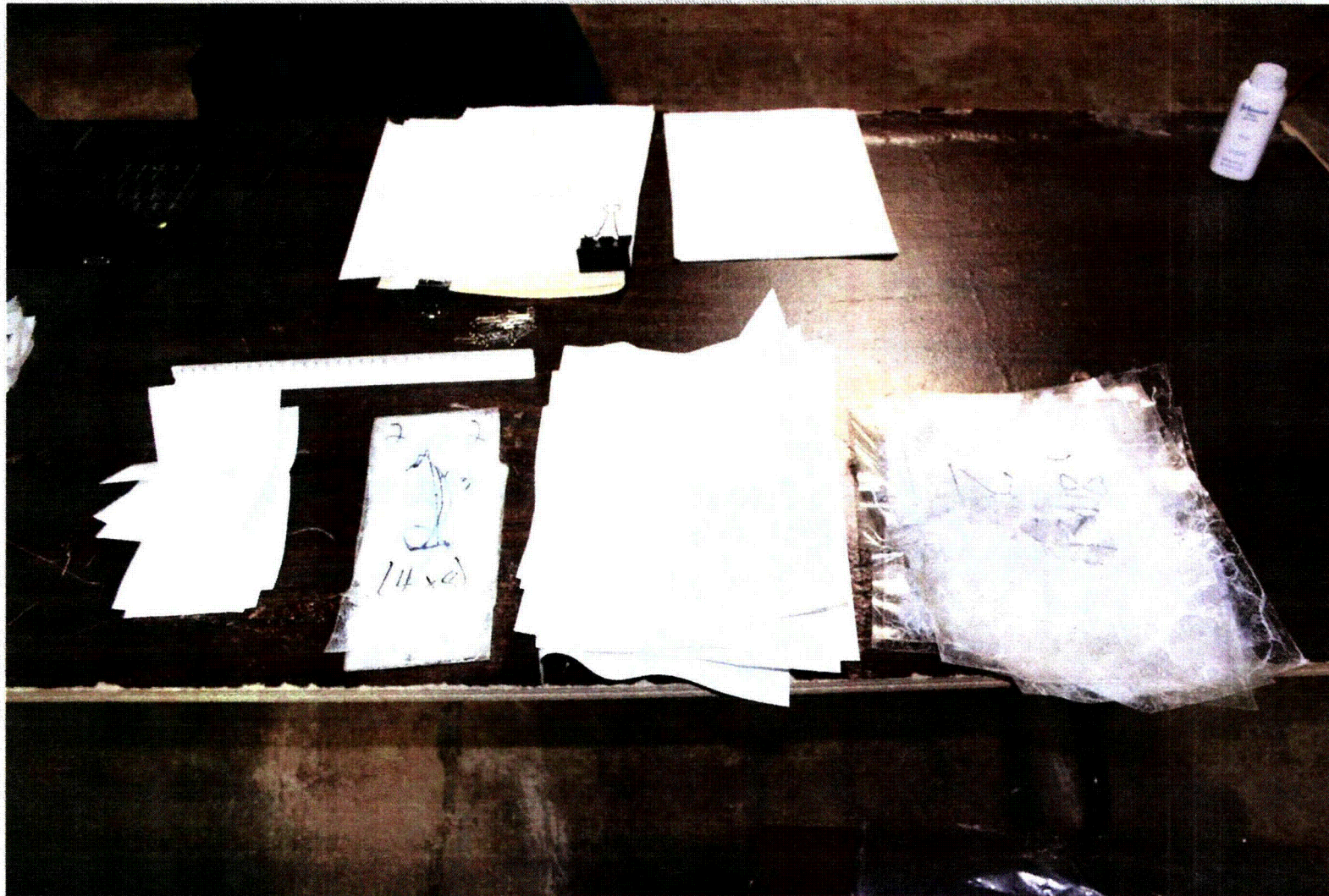
Test 6 Labels and Misc

Debris transport test – Series 1000 labels and tags



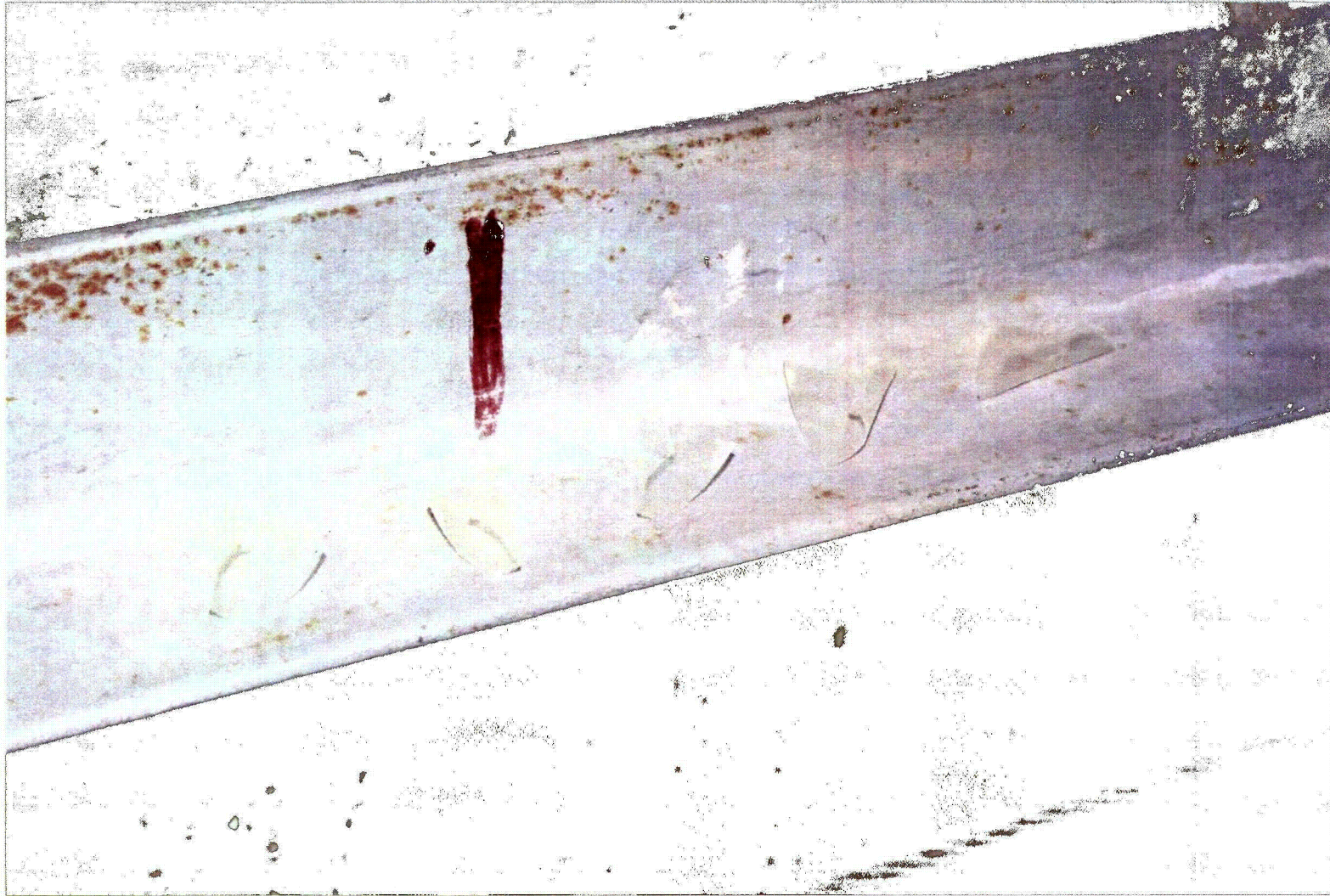
Test 6 Labels and Misc

Debris transport test – Series 1000 labels and tags



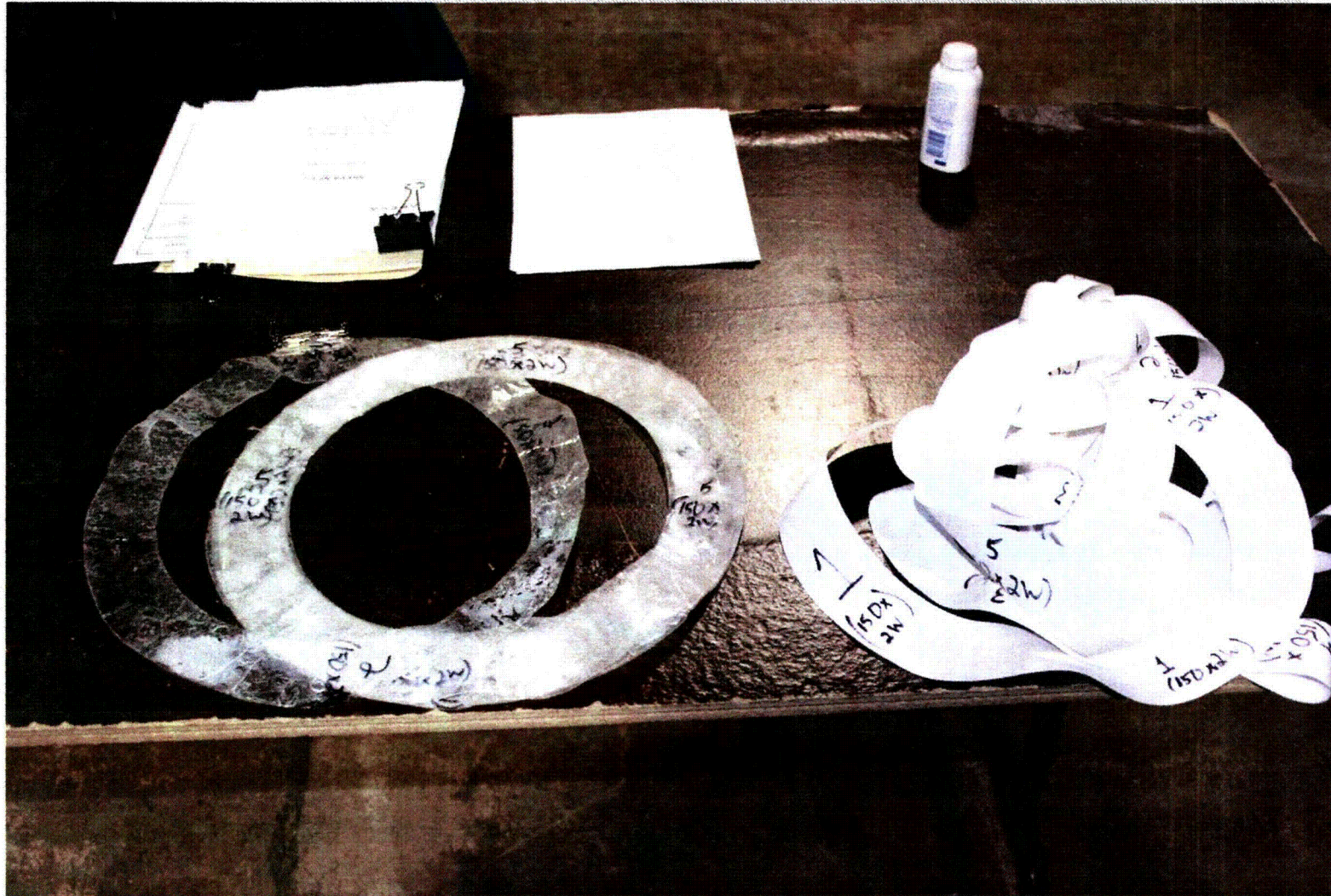
Test 6 Labels and Misc

Debris transport test – Mylar curled chips



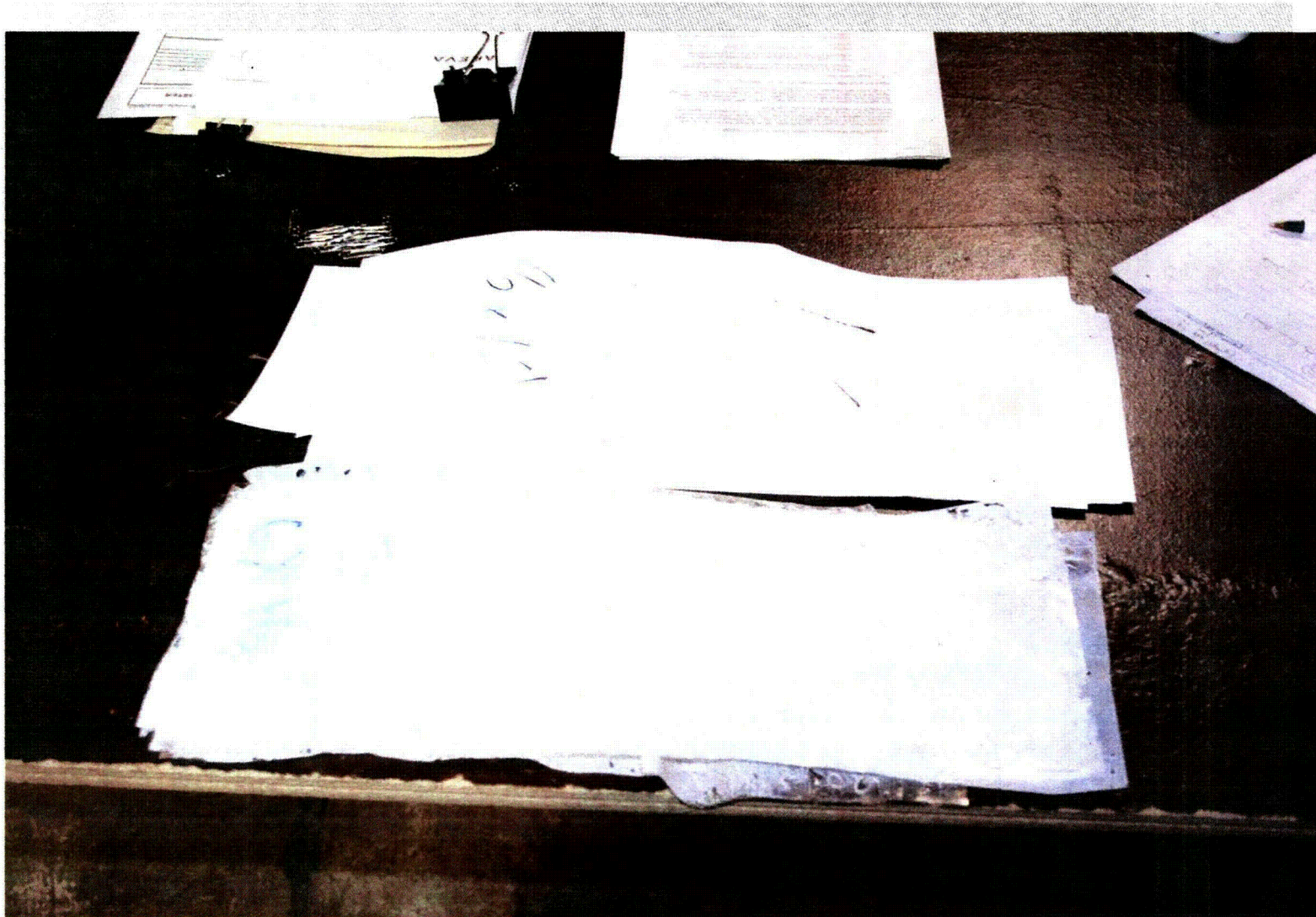
Test 6 Labels and Misc

Debris transport test – Series 1000 drain labels



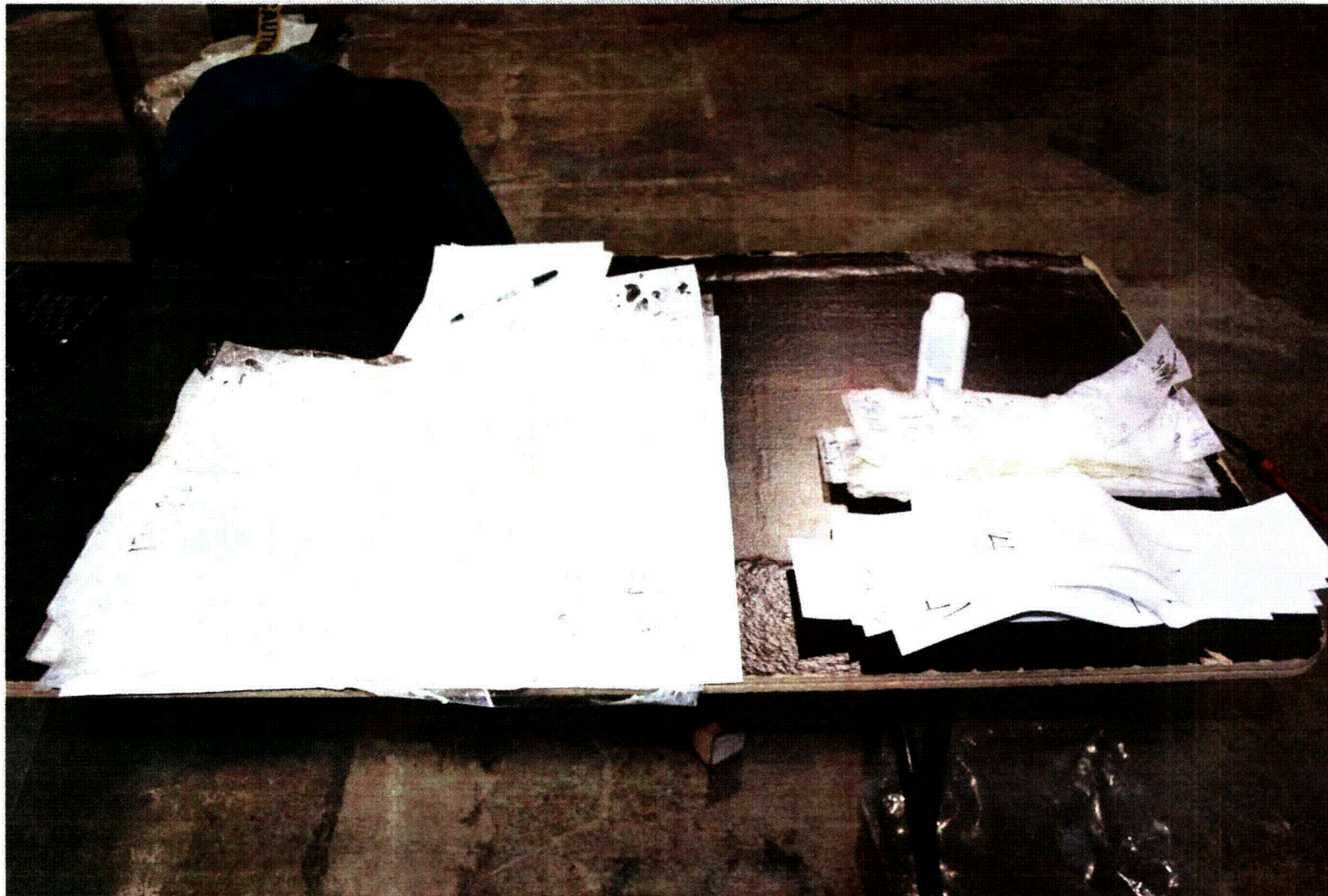
Test 6 Labels and Misc

Debris transport test – Series 1000 pipe flow direction labels



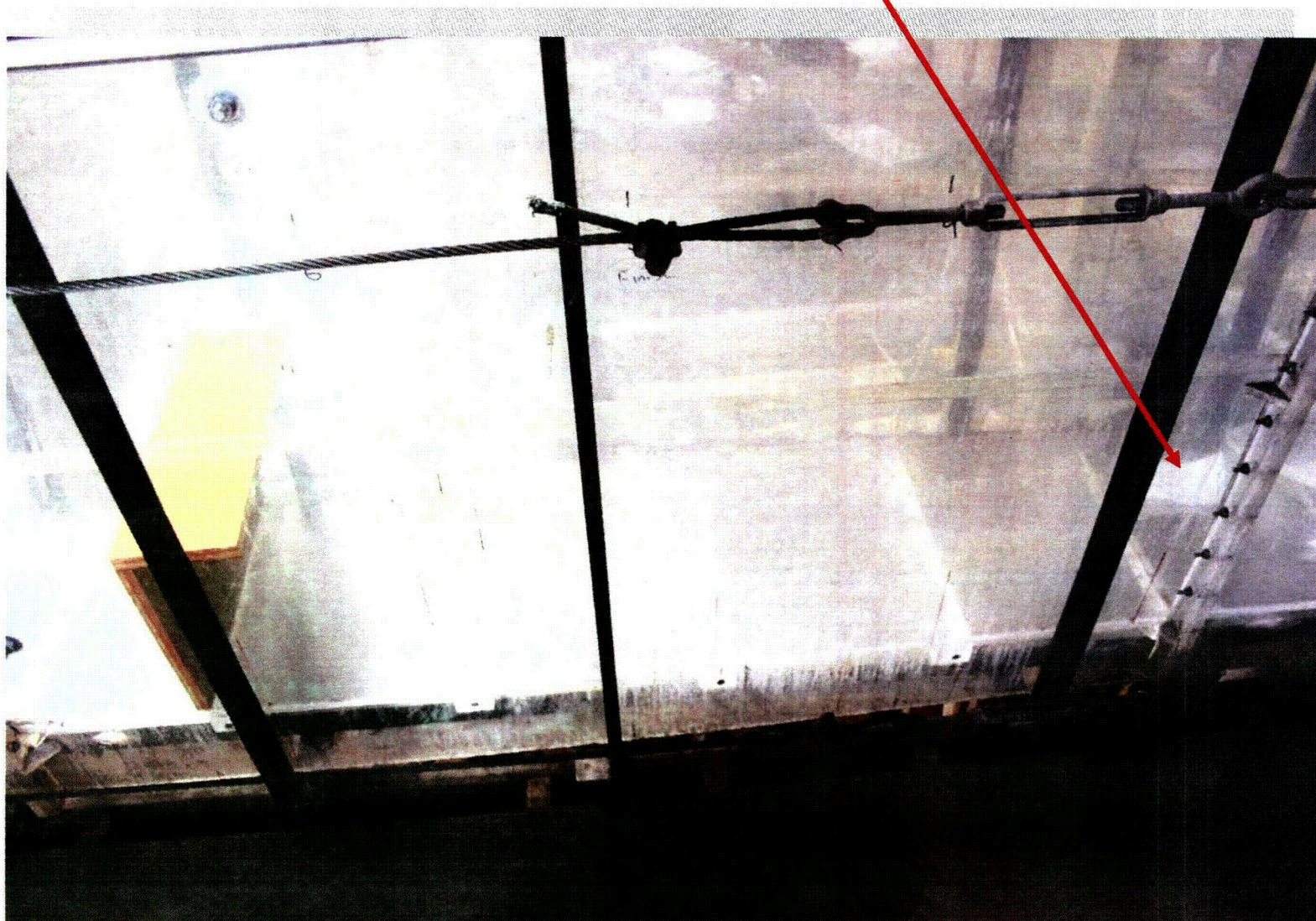
Test 6 Labels and Misc

Debris transport test – Series 1000 Electromark labels



Test 6 Labels and Misc

Debris transport test – closest debris on right



Test 6 Labels and Misc

Debris transport test – closest debris stopped and in descent



Test 6 Labels and Misc

Debris transport test – labels and tags settled over about 5 feet



Test 6 Labels and Misc

Debris transport test – labels and tags under drop zone



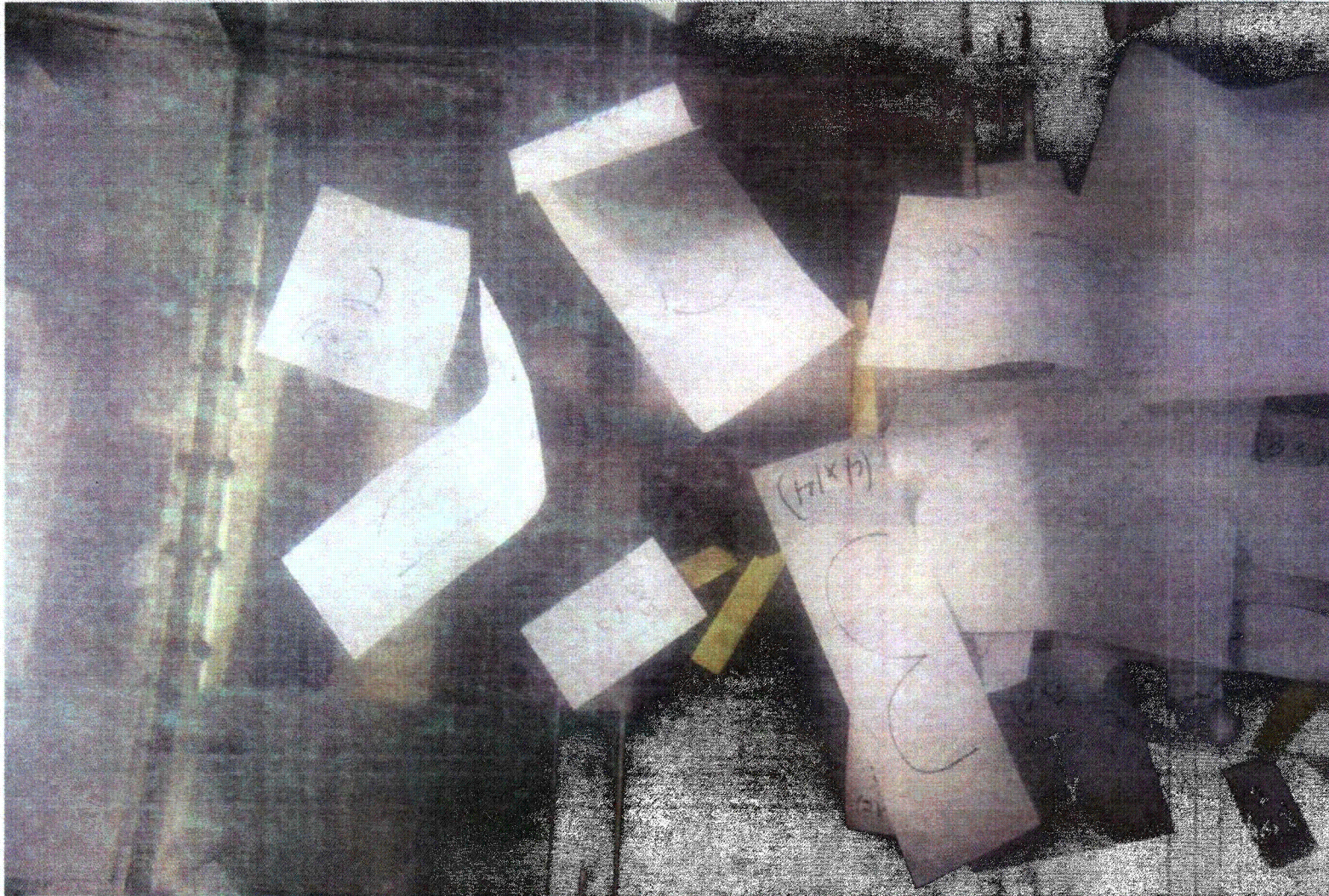
Test 6 Labels and Misc

Debris transport test – labels and tags within 3 feet of drop



Test 6 Labels and Misc

Debris transport test – labels and tags within 5 feet of drop



Test 6 Labels and Misc

Debris transport test – 17" x 22" labels



Test 6 Labels and Misc

Debris transport test – 17" x 22" labels



Test 6 Labels and Misc

Debris transport test – 17" x 22" labels



Test 6 Labels and Misc