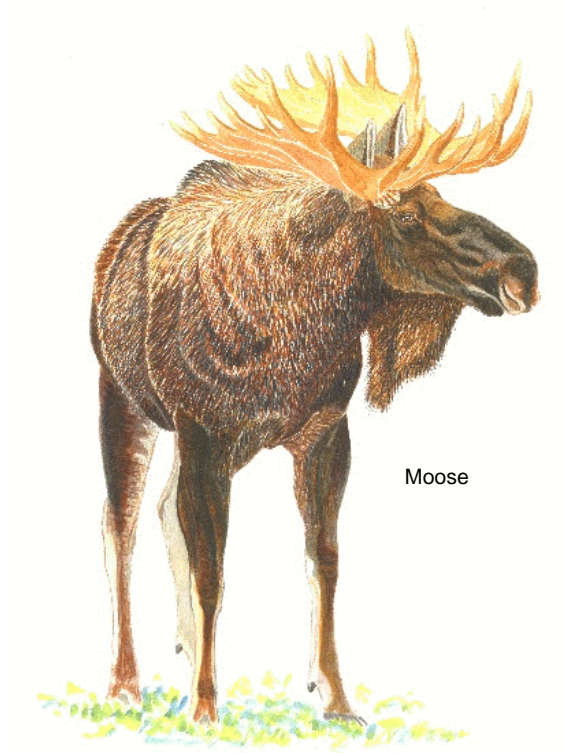
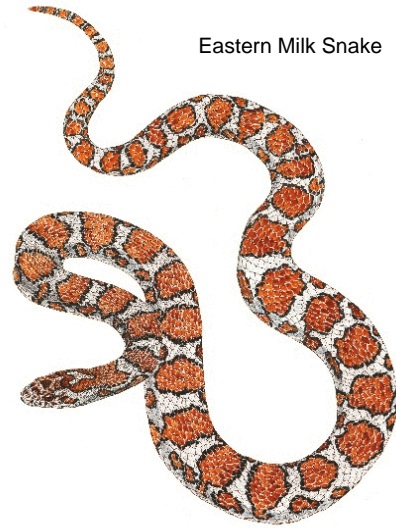


# CHECKLIST OF AMPHIBIANS, REPTILES, BIRDS AND MAMMALS OF NEW YORK STATE

Including Their Legal Status  
(Revised September 2007)



Moose



Eastern Milk Snake



Common Loon



Blue-spotted Salamander

*Artwork by Jean Gawalt*



New York State  
Department of Environmental Conservation  
Division of Fish, Wildlife and Marine Resources



New York State Department of Environmental Conservation  
Division of Fish, Wildlife and Marine Resources  
Wildlife Diversity Group  
625 Broadway  
Albany, New York 12233-4754

This web version is based upon an original hard copy version of Checklist of the Amphibians, Reptiles, Birds and Mammals of New York, Including Their Protective Status which was first published in 1985 and revised and reprinted in 1987. This version has had substantial revision in content and form.

First printing 1985  
Second printing (rev.) 1987  
Third revision 2001  
Fourth revision 2003  
Fifth revision 2005  
Sixth revision December 2005  
Seventh revision November 2006  
Eighth revision September 2007

## Introduction

The following list of amphibians (32 species), reptiles (39), birds (376) and mammals (92) indicates those vertebrate species believed to be part of the fauna of New York and the present legal status of these species in New York State. Common and scientific nomenclature is as according to: Collins (1990) for amphibians and reptiles; the American Ornithologists' Union (1983 and 2000) for birds; Whitaker, Jr. and Hamilton, Jr. (1998) for terrestrial mammals; and Leatherwood et. al. (1976) for marine mammals. Expected occurrence in New York State is based on: Gibbs, *et al* (2007) for amphibians and reptiles; Levine (1998); the Federation of New York State Bird Clubs (1999) for birds; Sadow (pers. comm. 2001) for marine mammals; and New York State Museum records for terrestrial mammals. Species are listed in taxonomic order, a system of arranging animals into related groups. Within this order, common groups have been identified for ease of reading (e.g. Woodpeckers, Turtles, etc.).

The following considerations were applied in compiling this checklist:

1. Gray wolf, and lynx formerly existed in the State, but are now considered extirpated (although a few lynx may survive from an experimental release that was not considered a successful reestablishment of the species). Both species are included in this checklist under rarely encountered species because there are existing populations within dispersal distance of New York and they are legally protected in New York by virtue of their being listed as endangered or threatened by the U. S. Department of the Interior.
2. Introduced exotic species (deliberate or inadvertent) are listed if there are persistent records of their occurrence for at least ten years and if there is satisfactory evidence of the species maintaining a reasonably stable or increasing population through successful reproduction. In addition, several species native to North America but not previously considered native to New York State are included because they have become established or are now seen with some degree of regularity (see #3 below).
3. Museum records of "rare" occurrences for all species were omitted from this checklist (e.g. wolverine). Birds for which 10 or more records are known (Levine 1998) have been included. Inclusion of marine mammals was based on their occurrence within the 30 fathom limit. Some species of reptiles, birds and mammals are listed separately at the end of the checklist under Rarely Encountered Species because they are not considered regularly occurring components of New York's fauna. They are rare visitors to New York or infrequently occur within or near New York's coastal waters.
4. **This checklist is not meant to be a complete list of all species of wildlife protected under New York State law.** Invertebrates and fish, for instance, are not included on this checklist. It is meant to provide a list of species occurring in the state according to the parameters described above. In

addition, New York State law protects all species designated as endangered or threatened by the U. S. Department of the Interior whether or not they occur naturally in the state. New York State Public Health Law 225(4),5(a) and 5(j) forbids the sale of any turtle species with an upper shell length of less than 4 inches.

The legal status of listed species is based on Federal and State laws and regulations. In the checklist, Federal legal status and New York State legal status for each species are indicated by abbreviations defined as follows:

### **Federal Definitions**

**E**        **Endangered Species** are determined by the U. S. Department of the Interior to be in danger of extinction throughout all or a significant portion of their range, as defined in the Endangered Species Act of 1973, and as amended. All such species are fully protected, including their habitat. Note that piping plover is designated End/Thr because it is listed as endangered in one portion of its range within New York State and threatened in another portion.

**T**        **Threatened Species** are determined by the U. S. Department of the Interior as likely to become endangered within the foreseeable future throughout all or a significant portion of their range, as defined in the Endangered Species Act of 1973, and as amended. All such species are fully protected.

**MBTA**    **Migratory Bird Treaty Act** of 1918, and as amended. The MBTA, including amendments, implements conventions between Canada, Mexico and the United States, Russia, Japan for the protection of migratory birds.

**MMPA**    **Marine Mammal Protection Act** of 1972, and as amended, was enacted for the protection, conservation, and management of all marine mammals to maintain the health and stability of the marine ecosystem.

**Un**        **Unprotected** under Federal law.

**CA1,CA2,CA3**    Indicates species listed in Appendices 1 or 2 under the **Convention on International Trade in Endangered Species (CITES)**, whose purpose is to protect certain species of flora and fauna against overexploitation in international trade. CITES lists species in three categories (appendices). Appendix 1 includes species threatened with extinction. Appendix 2 includes those species not currently endangered but which may become so if unrestricted trade occurs. Appendix 3 includes species identified by a country as needing protection. The listing herein is based upon the 16 April 1997 amendment, which can also be found on web site <http://international.fws.gov/cites/cites.html>.

## **State Definitions**

- E** **Endangered Species** are determined by the New York State Department of Environmental Conservation (DEC) to be in imminent danger of extinction or extirpation in New York State, or are federally listed as endangered. All such species are fully protected under New York State ECL 11-0535.
- T** **Threatened Species** are determined by the DEC as likely to become endangered within the foreseeable future in New York State, or are federally listed as threatened. All such species are fully protected under the New York State ECL 11-0535.
- SC** **Special Concern Species** are those native species which are not yet recognized as endangered or threatened, but for which documented evidence exists relating to their continued welfare in New York State. Legislation adopted 2 January 2006 gave Protected Wildlife status under ECL 11-0103 to all species listed as Special Concern. Special Concern species may also be protected under other laws.
- GS, GN** **Game** species are defined as “big game”, “small game” or “game bird” species in ECL 11-0103. In the checklist, **GS** indicates that there are seasons set for the species when they may be legally hunted. **GN** indicates that, while classified under the law as a game species, there are no seasons set and the species may not be hunted or taken at any time in New York.
- PB** **Protected Birds** are defined in ECL 11-0103 as all wild birds except those named as unprotected. Some of these birds, such as waterfowl and gallinaceous birds, are also listed as game species with seasons set, while others may not be taken at any time.
- P** **Protected Wildlife** - species besides birds protected under ECL 11-0103. This now includes all Special Concern (SC) species.
- Un** **Unprotected** means that the species may be taken at any time without limit. However, a license to take may be required.
- SR** **Special Regulations** - This designation is used for two species: diamondback terrapin is protected under ECL 11-0311, where DEC can adopt regulations restricting destruction, disturbance or taking of a species after petition by ten or more citizens on behalf of that species. Protection for harbor seal comes via specific inclusion in ECL 11-0107.
- \*** **Non-native** species whether introduced or naturally established.

## **References**

- American Ornithologists' Union. 1998. Check-list of North American birds. Seventh edition. Allen Press, Lawrence, Kansas. 829 pp.
- American Ornithologists' Union. 2000. Forty-second supplement to the American Ornithologists' Union check-list of North American birds. *The Auk* 123(3):926-936.
- American Ornithologists' Union. 2006. Forty-seventh supplement to the American Ornithologists' Union check-list of North American birds. *The Auk* 117:847-858.
- Federation of New York State Bird Clubs. 2004. Checklist of the birds of New York State. 14 pp.
- Levine, Emanuel, editor. 1998. Bull's birds of New York State. Cornell University Press, Ithaca, New York.
- Collins, J. T. 1990. Standard common and current scientific names for North American amphibians and reptiles. Third ed. Soc. for the Study of Amphibians and Reptiles, The University of Kansas, Lawrence. 41 pp.
- Connor, P. F. 1966. The mammals of the Tug Hill Plateau, New York. New York State Museum and Science Service Bulletin No. 406. State University of New York, Albany. 82 pp.
- Connor, P. F. 1971. The mammals of Long Island, New York. New York State Museum and Science Service Bulletin No. 416. State University of New York, Albany. 78 pp.
- Gibbs, J. P., A. R. Breisch, P. K. Ducey, G. Johnson, J. L. Behler and R. C. Bothner. 2007. The amphibians and reptiles of New York State: identification, natural history, and conservation. Oxford University Press. 422 pp.
- Jones, J. K. Jr., D. C. Carter, H. H. Genoways, R. S. Hoffman and D. W. Rice. 1982. Revised checklist of North American mammals north of Mexico, 1982. Occasional Papers No. 80, The Museum, Texas Tech. Univ., Lubbock, Texas. 22 pp.
- Leatherwood, S., D. K. Caldwell and H. E. Winn. 1976. Whales, dolphins and porpoises of the western North Atlantic. N.O.A.A., Tech. Rep., National Marine Fisheries Serv. CIRC-396. 176 pp.
- Sadov, S. 15 March 2001. Personal Communication.
- Whitaker, Jr., J. O. and Hamilton, Jr., W. J. 1998. Mammals of the eastern United States. Third Edition. Cornell University Press. Ithaca.

## AMPHIBIANS

COMMON NAME	SCIENTIFIC NAME	LEGAL STATUS	
		FEDERAL	STATE
<b><u>Hellbender, Mudpuppy and Salamanders</u></b>			
Hellbender	<i>Cryptobranchus alleganiensis</i>	Un	GN-SC
Common Mudpuppy	<i>Necturus maculosus</i>	Un	GN
Marbled Salamander	<i>Ambystoma opacum</i>	Un	GN-SC
Jefferson Salamander	<i>Ambystoma jeffersonianum</i>	Un	GN-SC
Blue-spotted Salamander	<i>Ambystoma laterale</i>	Un	GN-SC
Spotted Salamander	<i>Ambystoma maculatum</i>	Un	GN
Eastern Tiger Salamander	<i>Ambystoma tigrinum</i>	Un	GN-E
Red-spotted Newt	<i>Notophthalmus viridescens</i>	Un	GN
Northern Dusky Salamander	<i>Desmognathus fuscus</i>	Un	GN
Allegheny Mountain Dusky Salamander	<i>Desmognathus ochrophaeus</i>	Un	GN
Eastern Red-backed Salamander	<i>Plethodon cinereus</i>	Un	GN
Northern Slimy Salamander	<i>Plethodon glutinosus</i>	Un	GN
Wehrle's Salamander	<i>Plethodon wehrlei</i>	Un	GN
Four-toed Salamander	<i>Hemidactylium scutatum</i>	Un	GN
Northern Spring Salamander	<i>Gyrinophilus porphyriticus</i>	Un	GN
Northern Red Salamander	<i>Pseudotriton ruber</i>	Un	GN
Northern Two-lined Salamander	<i>Eurycea bislineata</i>	Un	GN
Long-tailed Salamander	<i>Eurycea longicauda</i>	Un	GN-SC
<b><u>Toads and Frogs</u></b>			
Eastern Spadefoot	<i>Scaphiopus holbrookii</i>	Un	GN-SC
Eastern American Toad	<i>Bufo americanus</i>	Un	GS
Fowler's Toad	<i>Bufo woodhousii</i>	Un	GS
Eastern (Northern) Cricket Frog	<i>Acris crepitans</i>	Un	GN-E
Gray Treefrog	<i>Hyla versicolor</i>	Un	GS
Spring Peeper	<i>Pseudacris crucifer</i>	Un	GS
Western Chorus Frog	<i>Pseudacris triseriata</i>	Un	GS
American Bullfrog	<i>Rana catesbeiana</i>	Un	GS
Northern Green Frog	<i>Rana clamitans</i>	Un	GS
Mink Frog	<i>Rana septentrionalis</i>	Un	GS
Wood Frog	<i>Rana sylvatica</i>	Un	GS
Northern Leopard Frog	<i>Rana pipiens</i>	Un	GS
Southern Leopard Frog	<i>Rana sphenoccephala</i>	Un	GS-SC
Pickerel Frog	<i>Rana palustris</i>	Un	GS

E = Endangered

T = Threatened

SC = Special Concern

MMPA = Marine Mammal Protection Act

MBTA = Migratory Bird Treaty Act

Un = Unprotected

SR = Special Regulations

PB = Protected Bird

P = Protected Wildlife

GS = Game (Season Set)

GN = Game (No Season)

CA1 = CITES Appendix 1

CA2 = CITES Appendix 2

CA3 = CITES Appendix 3

\* Non-native

## REPTILES

<u>COMMON NAME</u>	<u>SCIENTIFIC NAME</u>	<u>LEGAL STATUS</u>	
		<u>FEDERAL</u>	<u>STATE</u>
<u><b>Turtles</b></u>			
Snapping Turtle	<i>Chelydra serpentina</i>	Un	GS
Common Musk Turtle	<i>Sternotherus odoratus</i>	Un	GN
Eastern Mud Turtle	<i>Kinosternon subrubrum</i>	Un	GN-E
Spotted Turtle	<i>Clemmys guttata</i>	Un	GN-SC
Bog Turtle	<i>Clemmys muhlenbergii</i>	T-CA1	GN-E
Wood Turtle	<i>Clemmys insculpta</i>	Un-CA2	GN-SC
Eastern Box Turtle	<i>Terrapene carolina</i>	Un	GN-SC
Northern Diamond-backed Terrapin	<i>Malaclemys terrapin</i>	Un	GN-SR
Northern Map Turtle	<i>Graptemys geographica</i>	Un	GN
Red-eared Slider*	<i>Trachemys scripta</i>	Un	Un
Painted Turtle	<i>Chrysemys picta</i>	Un	GN
Blanding's Turtle	<i>Emydoidea blandingii</i>	Un	GN-T
<u><b>Sea Turtles</b></u>			
Common Green Seaturtle	<i>Chelonia mydas</i>	T-CA1	GN-T
Loggerhead Seaturtle	<i>Caretta caretta</i>	T-CA1	GN-T
Kemp's Ridley Seaturtle	<i>Lepidochelys kempii</i>	E-CA1	GN-E
Leatherback Seaturtle	<i>Dermochelys coriacea</i>	E-CA1	GN-E
<u><b>Softshell Turtles</b></u>			
Eastern Spiny Softshell	<i>Apalone spinifera</i>	Un	GN-SC
<u><b>Lizards</b></u>			
Northern Fence Lizard	<i>Sceloporus undulatus</i>	Un	GN-T
Italian Wall Lizard*	<i>Podarcis sicula</i>	Un	Un
Common Five-lined Skink	<i>Eumeces fasciatus</i>	Un	GN
Northern Coal Skink	<i>Eumeces anthracinus</i>	Un	GN
<u><b>Snakes</b></u>			
Common Watersnake	<i>Nerodia sipedon</i>	Un	GN
Queen Snake	<i>Regina septemvittata</i>	Un	GN-E
Northern Brownsnake	<i>Storeria dekayi</i>	Un	GN
Northern Redbelly Snake	<i>Storeria occipitomaculata</i>	Un	GN

E = Endangered

T = Threatened

SC = Special Concern

MMPA = Marine Mammal Protection Act

MBTA = Migratory Bird Treaty Act

Un = Unprotected

SR = Special Regulations

PB = Protected Bird

P = Protected Wildlife

GS = Game (Season Set)

GN = Game (No Season)

CA1 = CITES Appendix 1

CA2 = CITES Appendix 2

CA3 = CITES Appendix 3

\* Non-native

## REPTILES (cont.)

<u>COMMON NAME</u>	<u>SCIENTIFIC NAME</u>	<u>LEGAL STATUS</u>	
		<u>FEDERAL</u>	<u>STATE</u>
Eastern Gartersnake	<i>Thamnophis sirtalis</i>	Un	GN
Shorthead Gartersnake	<i>Thamnophis brachystoma</i>	Un	GN
Common Ribbonsnake	<i>Thamnophis sauritus</i>	Un	GN
Eastern Hog-nosed Snake	<i>Heterodon platirhinos</i>	Un	GN-SC
Northern Ring-necked Snake	<i>Diadophis punctatus</i>	Un	GN
Eastern Worm Snake	<i>Carphophis amoenus</i>	Un	GN-SC
Northern Black Racer	<i>Coluber constrictor</i>	Un	GN
Smooth Greensnake	<i>Opheodrys vernalis</i>	Un	GN
Black Ratsnake	<i>Elaphe obsoleta</i>	Un	GN
Eastern Milk Snake	<i>Lampropeltis triangulum</i>	Un	GN
Northern Copperhead	<i>Agkistrodon contortrix</i>	Un	GN
Eastern Massasauga	<i>Sistrurus catenatus</i>	Un	GN-E
Timber Rattlesnake	<i>Crotalus horridus</i>	Un	GN-T

---

E = Endangered	MBTA = Migratory Bird Treaty Act	PB = Protected Bird	CA1 = CITES Appendix 1
T = Threatened	Un = Unprotected	P = Protected Wildlife	CA2 = CITES Appendix 2
SC = Special Concern	SR = Special Regulations	GS = Game (Season Set)	CA3 = CITES Appendix 3
MMPA = Marine Mammal Protection Act		GN = Game (No Season)	* Non-native

# BIRDS

COMMON NAME	SCIENTIFIC NAME	LEGAL STATUS	
		FEDERAL	STATE
<b><u>Swans, Geese, and Ducks</u></b>			
Snow Goose	<i>Chen caerulescens</i>	MBTA	PB-GS
Canada Goose	<i>Branta canadensis</i>	MBTA	PB-GS
Brant	<i>Branta bernicla</i>	MBTA	PB-GS
Mute Swan*	<i>Cygnus olor</i>	Un	PB-GN
Trumpeter Swan	<i>Cygnus buccinator</i>	MBTA	PB-GN
Tundra Swan	<i>Cygnus columbianus</i>	MBTA	PB-GN
Wood Duck	<i>Aix sponsa</i>	MBTA	PB-GS
Gadwall	<i>Anas strepera</i>	MBTA	PB-GS
Eurasian Wigeon*	<i>Anas penelope</i>	MBTA-CA3	PB-GS
American Wigeon	<i>Anas americana</i>	MBTA	PB-GS
American Black Duck	<i>Anas rubripes</i>	MBTA	PB-GS
Mallard	<i>Anas platyrhynchos</i>	MBTA	PB-GS
Blue-winged Teal	<i>Anas discors</i>	MBTA	PB-GS
Northern Shoveler	<i>Anas clypeata</i>	MBTA-CA3	PB-GS
Northern Pintail	<i>Anas acuta</i>	MBTA-CA3	PB GS
Green-winged Teal	<i>Anas crecca</i>	MBTA-CA3	PB-GS
Canvasback	<i>Aythya valisineria</i>	MBTA	PB-GS
Redhead	<i>Aythya americana</i>	MBTA	PB-GS
Ring-necked Duck	<i>Aythya collaris</i>	MBTA	PB-GS
Greater Scaup	<i>Aythya marila</i>	MBTA	PB-GS
Lesser Scaup	<i>Aythya affinis</i>	MBTA	PB-GS
King Eider	<i>Somateria spectabilis</i>	MBTA	PB-GS
Common Eider	<i>Somateria mollissima</i>	MBTA	PB-GS
Harlequin Duck	<i>Histrionicus histrionicus</i>	MBTA	PB-GN
Surf Scoter	<i>Melanitta perspicillata</i>	MBTA	PB-GS
White-winged Scoter	<i>Melanitta fusca</i>	MBTA	PB-GS
Black Scoter	<i>Melanitta nigra</i>	MBTA	PB-GS
Long-tailed Duck	<i>Clangula hyemalis</i>	MBTA	PB-GS
Bufflehead	<i>Bucephala albeola</i>	MBTA	PB-GS
Common Goldeneye	<i>Bucephala clangula</i>	MBTA	PB-GS
Barrow's Goldeneye	<i>Bucephala islandica</i>	MBTA	PB-GS
Hooded Merganser	<i>Lophodytes cucullatus</i>	MBTA	PB-GS
Common Merganser	<i>Mergus merganser</i>	MBTA	PB-GS
Red-breasted Merganser	<i>Mergus serrator</i>	MBTA	PB-GS
Ruddy Duck	<i>Oxyura jamaicensis</i>	MBTA	PB-GS

E = Endangered

T = Threatened

SC = Special Concern

MMPA = Marine Mammal Protection Act

MBTA = Migratory Bird Treaty Act

Un = Unprotected

SR = Special Regulations

PB = Protected Bird

P = Protected Wildlife

GS = Game (Season Set)

GN = Game (No Season)

CA1 = CITES Appendix 1

CA2 = CITES Appendix 2

CA3 = CITES Appendix 3

\* Non-native

## BIRDS (cont.)

<u>COMMON NAME</u>	<u>SCIENTIFIC NAME</u>	<u>LEGAL STATUS</u>	
		<u>FEDERAL</u>	<u>STATE</u>
<b><u>Gallinaceous Birds</u></b>			
Gray Partridge*	<i>Perdix perdix</i>	Un	PB-GN
Ring-necked Pheasant*	<i>Phasianus colchicus</i>	Un	PB-GS
Ruffed Grouse	<i>Bonasa umbellus</i>	Un	PB-GS
Spruce Grouse	<i>Falcapennis canadensis</i>	Un	PB- GN-E
Wild Turkey	<i>Meleagris gallopavo</i>	Un	PB-GS
Northern Bobwhite	<i>Colinus virginianus</i>	Un	PB-GS
<b><u>Loons</u></b>			
Red-throated Loon	<i>Gavia stellata</i>	MBTA	PB
Common Loon	<i>Gavia immer</i>	MBTA	PB-SC
<b><u>Grebes</u></b>			
Pied-billed Grebe	<i>Podilymbus podiceps</i>	MBTA	PB-T
Horned Grebe	<i>Podiceps auritus</i>	MBTA	PB
Red-necked Grebe	<i>Podiceps grisegena</i>	MBTA	PB
Eared Grebe	<i>Podiceps nigricollis</i>	MBTA	PB
<b><u>Shearwaters</u></b>			
Northern Fulmar	<i>Fulmarus glacialis</i>	MBTA	PB
Cory's Shearwater	<i>Calonectris diomedea</i>	MBTA	PB
Greater Shearwater	<i>Puffinus gravis</i>	MBTA	PB
Sooty Shearwater	<i>Puffinus griseus</i>	MBTA	PB
Manx Shearwater	<i>Puffinus puffinus</i>	MBTA-T	PB
Audubon's Shearwater	<i>Puffinus lherminieri</i>	MBTA	PB
<b><u>Storm-Petrels</u></b>			
Wilson's Storm-Petrel	<i>Oceanites oceanicus</i>	MBTA	PB
<b><u>Gannets</u></b>			
Northern Gannet	<i>Morus bassanus</i>	MBTA	PB

E = Endangered

T = Threatened

SC = Special Concern

MMPA = Marine Mammal Protection Act

MBTA = Migratory Bird Treaty Act

Un = Unprotected

SR = Special Regulations

PB = Protected Bird

P = Protected Wildlife

GS = Game (Season Set)

GN = Game (No Season)

CA1 = CITES Appendix 1

CA2 = CITES Appendix 2

CA3 = CITES Appendix 3

\* Non-native

## BIRDS (cont.)

<u>COMMON NAME</u>	<u>SCIENTIFIC NAME</u>	<u>LEGAL STATUS</u>	
		<u>FEDERAL</u>	<u>STATE</u>
<u><b>Pelicans</b></u>			
Brown Pelican	<i>Pelecanus occidentalis</i>	MBTA	PB
<u><b>Cormorants</b></u>			
Double-crested Cormorant	<i>Phalacrocorax auritus</i>	MBTA	PB
Great Cormorant*	<i>Phalacrocorax carbo</i>	MBTA	PB
<u><b>Bitterns, Herons, and Egrets</b></u>			
American Bittern	<i>Botaurus lentiginosus</i>	MBTA	PB-SC
Least Bittern	<i>Ixobrychus exilis</i>	MBTA	PB-T
Great Blue Heron	<i>Ardea herodias</i>	MBTA	PB
Great Egret	<i>Ardea albus</i>	MBTA	PB
Snowy Egret	<i>Egretta thula</i>	MBTA	PB
Little Blue Heron	<i>Egretta caerulea</i>	MBTA	PB
Tricolored Heron	<i>Egretta tricolor</i>	MBTA	PB
Cattle Egret*	<i>Bubulcus ibis</i>	MBTA	PB
Green Heron	<i>Butorides virescens</i>	MBTA	PB
Black-crowned Night-Heron	<i>Nycticorax nycticorax</i>	MBTA	PB
Yellow-crowned Night-Heron	<i>Nyctanassa violacea</i>	MBTA	PB
<u><b>Ibises</b></u>			
Glossy Ibis	<i>Plegadis falcinellus</i>	MBTA	PB
<u><b>Vultures</b></u>			
Black Vulture	<i>Coragyps atratus</i>	MBTA	PB
Turkey Vulture	<i>Cathartes aura</i>	MBTA	PB
<u><b>Osprey, Eagles, and Hawks</b></u>			
Osprey	<i>Pandion haliaetus</i>	MBTA-CA2	PB-SC
Bald Eagle	<i>Haliaeetus leucocephalus</i>	MBTA-T-CA1	PB-T
Northern Harrier	<i>Circus cyaneus</i>	MBTA-CA2	PB-T
Sharp-shinned Hawk	<i>Accipiter striatus</i>	MBTA-CA2	PB-SC
Cooper's Hawk	<i>Accipiter cooperii</i>	MBTA-CA2	PB-SC

E = Endangered

T = Threatened

SC = Special Concern

MMPA = Marine Mammal Protection Act

MBTA = Migratory Bird Treaty Act

Un = Unprotected

SR = Special Regulations

PB = Protected Bird

P = Protected Wildlife

GS = Game (Season Set)

GN = Game (No Season)

CA1 = CITES Appendix 1

CA2 = CITES Appendix 2

CA3 = CITES Appendix 3

\* Non-native

## BIRDS (cont.)

<u>COMMON NAME</u>	<u>SCIENTIFIC NAME</u>	<u>LEGAL STATUS</u>	
		<u>FEDERAL</u>	<u>STATE</u>
Northern Goshawk	<i>Accipiter gentilis</i>	MBTA-CA2	PB-SC
Red-shouldered Hawk	<i>Buteo lineatus</i>	MBTA-CA2	PB-SC
Broad-winged Hawk	<i>Buteo platypterus</i>	MBTA-CA2	PB
Red-tailed Hawk	<i>Buteo jamaicensis</i>	MBTA-CA2	PB
Rough-legged Hawk	<i>Buteo lagopus</i>	MBTA-CA2	PB
Golden Eagle	<i>Aquila chrysaetos</i>	MBTA-CA2	PB-E
<b><u>Falcons</u></b>			
American Kestrel	<i>Falco sparverius</i>	MBTA-CA2	PB
Merlin	<i>Falco columbarius</i>	MBTA-CA2	PB
Peregrine Falcon	<i>Falco peregrinus</i>	MBTA-CA1	PB-E
<b><u>Rails</u></b>			
Yellow Rail	<i>Coturnicops noveboracensis</i>	MBTA	PB-GN
Black Rail	<i>Laterallus jamaicensis</i>	MBTA	PB-GN-E
Clapper Rail	<i>Rallus longirostris</i>	MBTA	PB-GN
King Rail	<i>Rallus elegans</i>	MBTA	PB-GN-T
Virginia Rail	<i>Rallus limicola</i>	MBTA	PB-GS
Sora	<i>Porzana carolina</i>	MBTA	PB-GS
Purple Gallinule	<i>Porphyryla martinica</i>	MBTA	PB-GS
Common Moorhen	<i>Gallinula chloropus</i>	MBTA	PB-GS
American Coot	<i>Fulica americana</i>	MBTA	PB-GS
<b><u>Plovers</u></b>			
Black-bellied Plover	<i>Pluvialis squatarola</i>	MBTA	PB-GN
American Golden-Plover	<i>Pluvialis dominica</i>	MBTA	PB-GN
Semipalmated Plover	<i>Charadrius semipalmatus</i>	MBTA	PB-GN
Piping Plover	<i>Charadrius melodus</i>	MBTA-E/T	PB-GN-E
Killdeer	<i>Charadrius vociferus</i>	MBTA	PB-GN
<b><u>Oystercatchers</u></b>			
American Oystercatcher	<i>Haematopus palliatus</i>	MBTA	PB-GN

E = Endangered

T = Threatened

SC = Special Concern

MMPA = Marine Mammal Protection Act

MBTA = Migratory Bird Treaty Act

Un = Unprotected

SR = Special Regulations

PB = Protected Bird

P = Protected Wildlife

GS = Game (Season Set)

GN = Game (No Season)

CA1 = CITES Appendix 1

CA2 = CITES Appendix 2

CA3 = CITES Appendix 3

\* Non-native

## BIRDS (cont.)

<u>COMMON NAME</u>	<u>SCIENTIFIC NAME</u>	<u>LEGAL STATUS</u>	
		<u>FEDERAL</u>	<u>STATE</u>
<b><u>Sandpipers, Phalaropes and Other Shorebirds</u></b>			
Greater Yellowlegs	<i>Tringa melanoleuca</i>	MBTA	PB-GN
Lesser Yellowlegs	<i>Tringa flavipes</i>	MBTA	PB-GN
Solitary Sandpiper	<i>Tringa solitaria</i>	MBTA	PB-GN
Willet	<i>Tringa semipalmata</i>	MBTA	PB-GN
Spotted Sandpiper	<i>Actitis macularia</i>	MBTA	PB-GN
Upland Sandpiper	<i>Bartramia longicauda</i>	MBTA	PB-GN-T
Whimbrel	<i>Numenius phaeopus</i>	MBTA	PB-GN
Hudsonian Godwit	<i>Limosa haemastica</i>	MBTA	PB-GN
Marbled Godwit	<i>Limosa fedoa</i>	MBTA	PB-GN
Ruddy Turnstone	<i>Arenaria interpres</i>	MBTA	PB-GN
Red Knot	<i>Calidris canutus</i>	MBTA	PB-GN
Sanderling	<i>Calidris alba</i>	MBTA	PB-GN
Semipalmated Sandpiper	<i>Calidris pusilla</i>	MBTA	PB-GN
Western Sandpiper	<i>Calidris mauri</i>	MBTA	PB-GN
Least Sandpiper	<i>Calidris minutilla</i>	MBTA	PB-GN
White-rumped Sandpiper	<i>Calidris fuscicollis</i>	MBTA	PB-GN
Baird's Sandpiper	<i>Calidris bairdii</i>	MBTA	PB-GN
Pectoral Sandpiper	<i>Calidris melanotos</i>	MBTA	PB-GN
Purple Sandpiper	<i>Calidris maritima</i>	MBTA	PB-GN
Dunlin	<i>Calidris alpina</i>	MBTA	PB-GN
Stilt Sandpiper	<i>Calidris himantopus</i>	MBTA	PB-GN
Buff-breasted Sandpiper	<i>Tryngites subruficollis</i>	MBTA	PB-GN
Ruff	<i>Philomachus pugnax</i>	MBTA	PB-GN
Short-billed Dowitcher	<i>Limnodromus griseus</i>	MBTA	PB-GN
Long-billed Dowitcher	<i>Limnodromus scolopaceus</i>	MBTA	PB-GN
Common Snipe	<i>Gallinago gallinago</i>	MBTA	PB-GS
American Woodcock	<i>Scolopax minor</i>	MBTA	PB-GS
Wilson's Phalarope	<i>Phalaropus tricolor</i>	MBTA	PB-GN
Red-necked Phalarope	<i>Phalaropus lobatus</i>	MBTA	PB-GN
Red Phalarope	<i>Phalaropus fulicaria</i>	MBTA	PB-GN

### **Jaegers, Gulls, and Terns**

Pomarine Jaeger	<i>Stercorarius pomarinus</i>	MBTA	PB
Parasitic Jaeger	<i>Stercorarius parasiticus</i>	MBTA	PB
Laughing Gull	<i>Larus atricilla</i>	MBTA	PB
Franklin's Gull	<i>Larus pipixcan</i>	MBTA	PB

E = Endangered

T = Threatened

SC = Special Concern

MMPA = Marine Mammal Protection Act

MBTA = Migratory Bird Treaty Act

Un = Unprotected

SR = Special Regulations

PB = Protected Bird

P = Protected Wildlife

GS = Game (Season Set)

GN = Game (No Season)

CA1 = CITES Appendix 1

CA2 = CITES Appendix 2

CA3 = CITES Appendix 3

\* Non-native

## BIRDS (cont.)

<u>COMMON NAME</u>	<u>SCIENTIFIC NAME</u>	<u>LEGAL STATUS</u>	
		<u>FEDERAL</u>	<u>STATE</u>
Little Gull	<i>Larus minutus</i>	MBTA	PB
Black-headed Gull	<i>Larus ridibundus</i>	MBTA	PB
Bonaparte's Gull	<i>Larus philadelphia</i>	MBTA	PB
Ring-billed Gull	<i>Larus delawarensis</i>	MBTA	PB
Herring Gull	<i>Larus argentatus</i>	MBTA	PB
Thayer's Gull	<i>Larus thayeri</i>	MBTA	PB
Iceland Gull	<i>Larus glaucoides</i>	MBTA	PB
Lesser Black-backed Gull	<i>Larus fuscus</i>	MBTA	PB
Glaucous Gull	<i>Larus hyperboreus</i>	MBTA	PB
Great Black-backed Gull	<i>Larus marinus</i>	MBTA	PB
Black-legged Kittiwake	<i>Rissa tridactyla</i>	MBTA	PB
Gull-billed Tern	<i>Sterna nilotica</i>	MBTA	PB
Caspian Tern	<i>Sterna caspia</i>	MBTA	PB
Royal Tern	<i>Sterna maxima</i>	MBTA	PB
Sandwich Tern	<i>Sterna sandvicensis</i>	MBTA	PB
Roseate Tern	<i>Sterna dougallii</i>	MBTA-E	PB-E
Common Tern	<i>Sterna hirundo</i>	MBTA	PB-T
Forster's Tern	<i>Sterna forsteri</i>	MBTA	PB
Least Tern	<i>Sterna antillarum</i>	MBTA	PB-T
Black Tern	<i>Chlidonias niger</i>	MBTA	PB-E
Black Skimmer	<i>Rynchops niger</i>	MBTA	PB-SC

### Auks, Murres and Puffins

Dovekie	<i>Alle alle</i>	MBTA	PB
Razorbill	<i>Alca torda</i>	MBTA	PB

### Doves and Pigeons

Rock Pigeon*	<i>Columba livia</i>	Un-CA3	Un
Mourning Dove	<i>Zenaida macroura</i>	MBTA	PB

### Parrots

Monk Parakeet*	<i>Myiopsitta monachus</i>	Un-CA2	Un
----------------	----------------------------	--------	----

### Cuckoos

Black-billed Cuckoo	<i>Coccyzus erythrophthalmus</i>	MBTA	PB
Yellow-billed Cuckoo	<i>Coccyzus americanus</i>	MBTA	PB

---

E = Endangered	MBTA = Migratory Bird Treaty Act	PB = Protected Bird	CA1 = CITES Appendix 1
T = Threatened	Un = Unprotected	P = Protected Wildlife	CA2 = CITES Appendix 2
SC = Special Concern	SR = Special Regulations	GS = Game (Season Set)	CA3 = CITES Appendix 3
MMPA = Marine Mammal Protection Act		GN = Game (No Season)	* Non-native

## BIRDS (cont.)

<u>COMMON NAME</u>	<u>SCIENTIFIC NAME</u>	<u>LEGAL STATUS</u>	
		<u>FEDERAL</u>	<u>STATE</u>
<u><b>Owls</b></u>			
Barn Owl	<i>Tyto alba</i>	MBTA-CA2	PB
Eastern Screech-Owl	<i>Megascops asio</i>	MBTA-CA2	PB
Great Horned Owl	<i>Bubo virginianus</i>	MBTA-CA2	PB
Snowy Owl	<i>Bubo scandiaca</i>	MBTA-CA2	PB
Barred Owl	<i>Strix varia</i>	MBTA-CA2	PB
Long-eared Owl	<i>Asio otus</i>	MBTA-CA2	PB
Short-eared Owl	<i>Asio flammeus</i>	MBTA-CA2	PB-E
Northern Saw-whet Owl	<i>Aegolius acadicus</i>	MBTA-CA2	PB
<u><b>Goatsuckers</b></u>			
Common Nighthawk	<i>Chordeiles minor</i>	MBTA	PB-SC
Chuck-will's-widow	<i>Caprimulgus carolinensis</i>	MBTA	PB
Whip-poor-will	<i>Caprimulgus vociferus</i>	MBTA	PB-SC
<u><b>Swifts</b></u>			
Chimney Swift	<i>Chaetura pelagica</i>	MBTA	PB
<u><b>Hummingbirds</b></u>			
Ruby-throated Hummingbird	<i>Archilochus colubris</i>	MBTA-CA2	PB
<u><b>Kingfishers</b></u>			
Belted Kingfisher	<i>Ceryle alcyon</i>	MBTA	PB
<u><b>Woodpeckers</b></u>			
Red-headed Woodpecker	<i>Melanerpes erythrocephalus</i>	MBTA	PB-SC
Red-bellied Woodpecker	<i>Melanerpes carolinus</i>	MBTA	PB
Yellow-bellied Sapsucker	<i>Sphyrapicus varius</i>	MBTA	PB
Downy Woodpecker	<i>Picoides pubescens</i>	MBTA	PB
Hairy Woodpecker	<i>Picoides villosus</i>	MBTA	PB
American Three-toed Woodpecker	<i>Picoides dorsalis</i>	MBTA	PB
Black-backed Woodpecker	<i>Picoides arcticus</i>	MBTA	PB
Northern Flicker	<i>Colaptes auratus</i>	MBTA	PB
Pileated Woodpecker	<i>Dryocopus pileatus</i>	MBTA	PB

E = Endangered

T = Threatened

SC = Special Concern

MMPA = Marine Mammal Protection Act

MBTA = Migratory Bird Treaty Act

Un = Unprotected

SR = Special Regulations

PB = Protected Bird

P = Protected Wildlife

GS = Game (Season Set)

GN = Game (No Season)

CA1 = CITES Appendix 1

CA2 = CITES Appendix 2

CA3 = CITES Appendix 3

\* Non-native

## BIRDS (cont.)

<u>COMMON NAME</u>	<u>SCIENTIFIC NAME</u>	<u>LEGAL STATUS</u>	
		<u>FEDERAL</u>	<u>STATE</u>
<u><b>Flycatchers</b></u>			
Olive-sided Flycatcher	<i>Contopus cooperi</i>	MBTA	PB
Eastern Wood-Pewee	<i>Contopus virens</i>	MBTA	PB
Yellow-bellied Flycatcher	<i>Empidonax flaviventris</i>	MBTA	PB
Acadian Flycatcher	<i>Empidonax virescens</i>	MBTA	PB
Alder Flycatcher	<i>Empidonax alnorum</i>	MBTA	PB
Willow Flycatcher	<i>Empidonax traillii</i>	MBTA	PB
Least Flycatcher	<i>Empidonax minimus</i>	MBTA	PB
Eastern Phoebe	<i>Sayornis phoebe</i>	MBTA	PB
Great Crested Flycatcher	<i>Myiarchus crinitus</i>	MBTA	PB
Western Kingbird	<i>Tyrannus verticalis</i>	MBTA	PB
Eastern Kingbird	<i>Tyrannus tyrannus</i>	MBTA	PB
<u><b>Shrikes</b></u>			
Loggerhead Shrike	<i>Lanius ludovicianus</i>	MBTA	PB-E
Northern Shrike	<i>Lanius excubitor</i>	MBTA	PB
<u><b>Vireos</b></u>			
White-eyed Vireo	<i>Vireo griseus</i>	MBTA	PB
Yellow-throated Vireo	<i>Vireo flavifrons</i>	MBTA	PB
Blue-headed Vireo	<i>Vireo solitarius</i>	MBTA	PB
Warbling Vireo	<i>Vireo gilvus</i>	MBTA	PB
Philadelphia Vireo	<i>Vireo philadelphicus</i>	MBTA	PB
Red-eyed Vireo	<i>Vireo olivaceus</i>	MBTA	PB
<u><b>Jays, Crows, and Ravens</b></u>			
Gray Jay	<i>Perisoreus canadensis</i>	MBTA	PB-GN
Blue Jay	<i>Cyanocitta cristata</i>	MBTA	PB-GN
American Crow	<i>Corvus brachyrhynchos</i>	MBTA	PB-GS
Fish Crow	<i>Corvus ossifragus</i>	MBTA	PB-GS
Common Raven	<i>Corvus corax</i>	MBTA	PB-GN
<u><b>Larks</b></u>			
Horned Lark	<i>Eremophila alpestris</i>	MBTA	PB-SC

E = Endangered

T = Threatened

SC = Special Concern

MMPA = Marine Mammal Protection Act

MBTA = Migratory Bird Treaty Act

Un = Unprotected

SR = Special Regulations

PB = Protected Bird

P = Protected Wildlife

GS = Game (Season Set)

GN = Game (No Season)

CA1 = CITES Appendix 1

CA2 = CITES Appendix 2

CA3 = CITES Appendix 3

\* Non-native

## BIRDS (cont.)

<u>COMMON NAME</u>	<u>SCIENTIFIC NAME</u>	<u>LEGAL STATUS</u>	
		<u>FEDERAL</u>	<u>STATE</u>
<u><b>Swallows</b></u>			
Purple Martin	<i>Progne subis</i>	MBTA	PB
Tree Swallow	<i>Tachycineta bicolor</i>	MBTA	PB
Northern Rough-winged Swallow	<i>Stelgidopteryx serripennis</i>	MBTA	PB
Bank Swallow	<i>Riparia riparia</i>	MBTA	PB
Cliff Swallow	<i>Petrochelidon pyrrhonota</i>	MBTA	PB
Barn Swallow	<i>Hirundo rustica</i>	MBTA	PB
<u><b>Chickadees and Titmice</b></u>			
Black-capped Chickadee	<i>Poecile atricapillus</i>	MBTA	PB
Boreal Chickadee	<i>Poecile hudsonica</i>	MBTA	PB
Tufted Titmouse	<i>Baeolophus bicolor</i>	MBTA	PB
<u><b>Nuthatches</b></u>			
Red-breasted Nuthatch	<i>Sitta canadensis</i>	MBTA	PB
White-breasted Nuthatch	<i>Sitta carolinensis</i>	MBTA	PB
<u><b>Creepers</b></u>			
Brown Creeper	<i>Certhia americana</i>	MBTA	PB
<u><b>Wrens</b></u>			
Carolina Wren	<i>Thryothorus ludovicianus</i>	MBTA	PB
House Wren	<i>Troglodytes aedon</i>	MBTA	PB
Winter Wren	<i>Troglodytes troglodytes</i>	MBTA	PB
Sedge Wren	<i>Cistothorus platensis</i>	MBTA	PB-T
Marsh Wren	<i>Cistothorus palustris</i>	MBTA	PB
<u><b>Kinglets</b></u>			
Golden-crowned Kinglet	<i>Regulus satrapa</i>	MBTA	PB
Ruby-crowned Kinglet	<i>Regulus calendula</i>	MBTA	PB
<u><b>Gnatcatchers</b></u>			
Blue-gray Gnatcatcher	<i>Poliophtila caerulea</i>	MBTA	PB

E = Endangered

T = Threatened

SC = Special Concern

MMPA = Marine Mammal Protection Act

MBTA = Migratory Bird Treaty Act

Un = Unprotected

SR = Special Regulations

PB = Protected Bird

P = Protected Wildlife

GS = Game (Season Set)

GN = Game (No Season)

CA1 = CITES Appendix 1

CA2 = CITES Appendix 2

CA3 = CITES Appendix 3

\* Non-native

## BIRDS (cont.)

<u>COMMON NAME</u>	<u>SCIENTIFIC NAME</u>	<u>LEGAL STATUS</u>	
		<u>FEDERAL</u>	<u>STATE</u>
<u>Thrushes</u>			
Eastern Bluebird	<i>Sialia sialis</i>	MBTA	PB
Veery	<i>Catharus fuscescens</i>	MBTA	PB
Gray-cheeked Thrush	<i>Catharus minimus</i>	MBTA	PB
Bicknell's Thrush	<i>Catharus bicknelli</i>	MBTA	PB-SC
Swainson's Thrush	<i>Catharus ustulatus</i>	MBTA	PB
Hermit Thrush	<i>Catharus guttatus</i>	MBTA	PB
Wood Thrush	<i>Hylocichla mustelina</i>	MBTA	PB
American Robin	<i>Turdus migratorius</i>	MBTA	PB
<u>Mockingbirds and Thrashers</u>			
Gray Catbird	<i>Dumetella carolinensis</i>	MBTA	PB
Northern Mockingbird	<i>Mimus polyglottos</i>	MBTA	PB
Brown Thrasher	<i>Toxostoma rufum</i>	MBTA	PB
<u>Starlings</u>			
European Starling*	<i>Sturnus vulgaris</i>	Un	Un
<u>Pipits</u>			
American Pipit	<i>Anthus rubescens</i>	MBTA	PB
<u>Waxwings</u>			
Bohemian Waxwing	<i>Bombycilla garrulus</i>	MBTA	PB
Cedar Waxwing	<i>Bombycilla cedrorum</i>	MBTA	PB
<u>Warblers</u>			
Blue-winged Warbler	<i>Vermivora pinus</i>	MBTA	PB
Golden-winged Warbler	<i>Vermivora chrysoptera</i>	MBTA	PB-SC
Tennessee Warbler	<i>Vermivora peregrina</i>	MBTA	PB
Orange-crowned Warbler	<i>Vermivora celata</i>	MBTA	PB
Nashville Warbler	<i>Vermivora ruficapilla</i>	MBTA	PB
Northern Parula	<i>Parula americana</i>	MBTA	PB
Yellow Warbler	<i>Dendroica petechia</i>	MBTA	PB
Chestnut-sided Warbler	<i>Dendroica pensylvanica</i>	MBTA	PB

E = Endangered

T = Threatened

SC = Special Concern

MMPA = Marine Mammal Protection Act

MBTA = Migratory Bird Treaty Act

Un = Unprotected

SR = Special Regulations

PB = Protected Bird

P = Protected Wildlife

GS = Game (Season Set)

GN = Game (No Season)

CA1 = CITES Appendix 1

CA2 = CITES Appendix 2

CA3 = CITES Appendix 3

\* Non-native

## BIRDS (cont.)

<u>COMMON NAME</u>	<u>SCIENTIFIC NAME</u>	<u>LEGAL STATUS</u>	
		<u>FEDERAL</u>	<u>STATE</u>
Magnolia Warbler	<i>Dendroica magnolia</i>	MBTA	PB
Cape May Warbler	<i>Dendroica tigrina</i>	MBTA	PB
Black-throated Blue Warbler	<i>Dendroica caerulescens</i>	MBTA	PB
Yellow-rumped Warbler	<i>Dendroica coronata</i>	MBTA	PB
Black-throated Green Warbler	<i>Dendroica virens</i>	MBTA	PB
Blackburnian Warbler	<i>Dendroica fusca</i>	MBTA	PB
Yellow-throated Warbler	<i>Dendroica dominica</i>	MBTA	PB
Pine Warbler	<i>Dendroica pinus</i>	MBTA	PB
Prairie Warbler	<i>Dendroica discolor</i>	MBTA	PB
Palm Warbler	<i>Dendroica palmarum</i>	MBTA	PB
Bay-breasted Warbler	<i>Dendroica castanea</i>	MBTA	PB
Blackpoll Warbler	<i>Dendroica striata</i>	MBTA	PB
Cerulean Warbler	<i>Dendroica cerulea</i>	MBTA	PB-SC
Black-and-white Warbler	<i>Mniotilta varia</i>	MBTA	PB
American Redstart	<i>Setophaga ruticilla</i>	MBTA	PB
Prothonotary Warbler	<i>Protonotaria citrea</i>	MBTA	PB
Worm-eating Warbler	<i>Helmitheros vermivorus</i>	MBTA	PB
Ovenbird	<i>Seiurus aurocapilla</i>	MBTA	PB
Northern Waterthrush	<i>Seiurus noveboracensis</i>	MBTA	PB
Louisiana Waterthrush	<i>Seiurus motacilla</i>	MBTA	PB
Kentucky Warbler	<i>Oporornis formosus</i>	MBTA	PB
Connecticut Warbler	<i>Oporornis agilis</i>	MBTA	PB
Mourning Warbler	<i>Oporornis philadelphia</i>	MBTA	PB
Common Yellowthroat	<i>Geothlypis trichas</i>	MBTA	PB
Hooded Warbler	<i>Wilsonia citrina</i>	MBTA	PB
Wilson's Warbler	<i>Wilsonia pusilla</i>	MBTA	PB
Canada Warbler	<i>Wilsonia canadensis</i>	MBTA	PB
Yellow-breasted Chat	<i>Icteria virens</i>	MBTA	PB-SC

### Tanagers

Summer Tanager	<i>Piranga rubra</i>	MBTA	PB
Scarlet Tanager	<i>Piranga olivacea</i>	MBTA	PB

### Sparrows

Eastern Towhee	<i>Pipilo erythrophthalmus</i>	MBTA	PB
American Tree Sparrow	<i>Spizella arborea</i>	MBTA	PB
Chipping Sparrow	<i>Spizella passerina</i>	MBTA	PB
Clay-colored Sparrow	<i>Spizella pallida</i>	MBTA	PB

---

E = Endangered	MBTA = Migratory Bird Treaty Act	PB = Protected Bird	CA1 = CITES Appendix 1
T = Threatened	Un = Unprotected	P = Protected Wildlife	CA2 = CITES Appendix 2
SC = Special Concern	SR = Special Regulations	GS = Game (Season Set)	CA3 = CITES Appendix 3
MMPA = Marine Mammal Protection Act		GN = Game (No Season)	* Non-native

## BIRDS (cont.)

<u>COMMON NAME</u>	<u>SCIENTIFIC NAME</u>	<u>LEGAL STATUS</u>	
		<u>FEDERAL</u>	<u>STATE</u>
Field Sparrow	<i>Spizella pusilla</i>	MBTA	PB
Vesper Sparrow	<i>Pooecetes gramineus</i>	MBTA	PB-SC
Lark Sparrow	<i>Chondestes grammacus</i>	MBTA	PB
Savannah Sparrow	<i>Passerculus sandwichensis</i>	MBTA	PB
Grasshopper Sparrow	<i>Ammodramus savannarum</i>	MBTA	PB-SC
Henslow's Sparrow	<i>Ammodramus henslowii</i>	MBTA	PB-T
Nelson's Sharp-tailed Sparrow	<i>Ammodramus nelsoni</i>	MBTA	PB
Saltmarsh Sharp-tailed Sparrow	<i>Ammodramus caudacutus</i>	MBTA	PB
Seaside Sparrow	<i>Ammodramus maritimus</i>	MBTA	PB-SC
Fox Sparrow	<i>Passerella iliaca</i>	MBTA	PB
Song Sparrow	<i>Melospiza melodia</i>	MBTA	PB
Lincoln's Sparrow	<i>Melospiza lincolni</i>	MBTA	PB
Swamp Sparrow	<i>Melospiza georgiana</i>	MBTA	PB
White-throated Sparrow	<i>Zonotrichia albicollis</i>	MBTA	PB
White-crowned Sparrow	<i>Zonotrichia leucophrys</i>	MBTA	PB
Dark-eyed Junco	<i>Junco hyemalis</i>	MBTA	PB
Lapland Longspur	<i>Calcarius lapponicus</i>	MBTA	PB
Snow Bunting	<i>Plectrophenax nivalis</i>	MBTA	PB

### Grosbeaks and Buntings

Northern Cardinal	<i>Cardinalis cardinalis</i>	MBTA	PB
Rose-breasted Grosbeak	<i>Pheucticus ludovicianus</i>	MBTA	PB
Blue Grosbeak	<i>Guiraca caerulea</i>	MBTA	PB
Indigo Bunting	<i>Passerina cyanea</i>	MBTA	PB
Dickcissel	<i>Spiza americana</i>	MBTA	PB

### Blackbirds and Orioles

Bobolink	<i>Dolichonyx oryzivorus</i>	MBTA	PB
Red-winged Blackbird	<i>Agelaius phoeniceus</i>	MBTA	PB
Eastern Meadowlark	<i>Sturnella magna</i>	MBTA	PB
Western Meadowlark	<i>Sturnella neglecta</i>	MBTA	PB
Rusty Blackbird	<i>Euphagus carolinus</i>	MBTA	PB
Brewer's Blackbird	<i>Euphagus cyanocephalus</i>	MBTA	PB
Common Grackle	<i>Quiscalus quiscula</i>	MBTA	PB
Boat-tailed Grackle	<i>Quiscalus major</i>	MBTA	PB
Brown-headed Cowbird	<i>Molothrus ater</i>	MBTA	PB
Orchard Oriole	<i>Icterus spurius</i>	MBTA	PB
Baltimore Oriole	<i>Icterus galbula</i>	MBTA	PB

---

E = Endangered	MBTA = Migratory Bird Treaty Act	PB = Protected Bird	CA1 = CITES Appendix 1
T = Threatened	Un = Unprotected	P = Protected Wildlife	CA2 = CITES Appendix 2
SC = Special Concern	SR = Special Regulations	GS = Game (Season Set)	CA3 = CITES Appendix 3
MMPA = Marine Mammal Protection Act		GN = Game (No Season)	* Non-native

## BIRDS (cont.)

<u>COMMON NAME</u>	<u>SCIENTIFIC NAME</u>	<u>LEGAL STATUS</u>	
		<u>FEDERAL</u>	<u>STATE</u>
<u><b>Finches</b></u>			
Pine Grosbeak	<i>Pinicola enucleator</i>	MBTA	PB
Purple Finch	<i>Carpodacus purpureus</i>	MBTA	PB
House Finch	<i>Carpodacus mexicanus</i>	MBTA	PB
Red Crossbill	<i>Loxia curvirostra</i>	MBTA	PB
White-winged Crossbill	<i>Loxia leucoptera</i>	MBTA	PB
Common Redpoll	<i>Carduelis flammea</i>	MBTA	PB
Pine Siskin	<i>Carduelis pinus</i>	MBTA	PB
American Goldfinch	<i>Carduelis tristis</i>	MBTA	PB
Evening Grosbeak	<i>Coccothraustes vespertinus</i>	MBTA	PB
<u><b>European Sparrows</b></u>			
House Sparrow*	<i>Passer domesticus</i>	Un	Un

---

E = Endangered	MBTA = Migratory Bird Treaty Act	PB = Protected Bird	CA1 = CITES Appendix 1
T = Threatened	Un = Unprotected	P = Protected Wildlife	CA2 = CITES Appendix 2
SC = Special Concern	SR = Special Regulations	GS = Game (Season Set)	CA3 = CITES Appendix 3
MMPA = Marine Mammal Protection Act		GN = Game (No Season)	* Non-native

# MAMMALS

COMMON NAME	SCIENTIFIC NAME	LEGAL STATUS	
		FEDERAL	STATE

## Marsupials

Virginia Opossum	<i>Didelphis virginiana</i>	Un	GS
------------------	-----------------------------	----	----

## Shrews and Moles

Masked Shrew	<i>Sorex cinereus</i>	Un	Un
Water Shrew	<i>Sorex palustris</i>	Un	Un
Smoky Shrew	<i>Sorex fumeus</i>	Un	Un
Long-tailed Shrew	<i>Sorex dispar</i>	Un	Un
Pygmy Shrew	<i>Sorex hoyi</i>	Un	Un
Northern Short-tailed Shrew	<i>Blarina brevicauda</i>	Un	Un
Least Shrew	<i>Cryptotis parva</i>	Un	Un
Hairy-tailed Mole	<i>Parascalops breweri</i>	Un	Un
Eastern Mole	<i>Scalopus aquaticus</i>	Un	Un
Star-nosed Mole	<i>Condylura cristata</i>	Un	Un

## Bats

Little Brown Bat	<i>Myotis lucifugus</i>	Un	Un
Keen's Bat	<i>Myotis septentrionalis</i>	Un	Un
Indiana Bat	<i>Myotis sodalis</i>	E	E
Small-footed Bat	<i>Myotis leibii</i>	Un	P-SC
Silver-haired Bat	<i>Lasionycteris noctivagans</i>	Un	Un
Eastern Pipistrelle	<i>Pipistrellus subflavus</i>	Un	Un
Big Brown Bat	<i>Eptesicus fuscus</i>	Un	Un
Red Bat	<i>Lasiurus borealis</i>	Un	Un
Hoary Bat	<i>Lasiurus cinereus</i>	Un	Un

## Canids

Coyote	<i>Canis latrans</i>	Un	GS
Red Fox	<i>Vulpes vulpes</i>	Un	GS
Gray Fox	<i>Urocyon cinereoargenteus</i>	Un	GS

## Bear

Black Bear	<i>Ursus americanus</i>	Un-CA2	GS
------------	-------------------------	--------	----

---

E = Endangered	MBTA = Migratory Bird Treaty Act	PB = Protected Bird	CA1 = CITES Appendix 1
T = Threatened	Un = Unprotected	P = Protected Wildlife	CA2 = CITES Appendix 2
SC = Special Concern	SR = Special Regulations	GS = Game (Season Set)	CA3 = CITES Appendix 3
MMPA = Marine Mammal Protection Act		GN = Game (No Season)	* Non-native

## MAMMALS (cont.)

<u>COMMON NAME</u>	<u>SCIENTIFIC NAME</u>	<u>LEGAL STATUS</u>	
		<u>FEDERAL</u>	<u>STATE</u>
<u><b>Raccoon</b></u>			
Raccoon	<i>Procyon lotor</i>	Un	GS
<u><b>Mustelids</b></u>			
Marten	<i>Martes americana</i>	Un	GS
Fisher	<i>Martes pennanti</i>	Un	GS
Ermine	<i>Mustela erminea</i>	Un	GS
Long-tailed Weasel	<i>Mustela frenata</i>	Un	GS
Mink	<i>Mustela vison</i>	Un	GS
Striped Skunk	<i>Mephitis mephitis</i>	Un	GS
River Otter	<i>Lontra canadensis</i>	Un-CA2	GS
<u><b>Felids</b></u>			
Bobcat	<i>Lynx rufus</i>	Un-CA2	GS
<u><b>Marine Mammals</b></u>			
Harbor Seal	<i>Phoca vitulina</i>	MMPA	SR
Harp Seal	<i>Phoca groenlandica</i>	MMPA	Un
Gray Seal	<i>Halichoerus grypus</i>	MMPA	Un
Hooded Seal	<i>Cystophora cristata</i>	MMPA	Un
Saddleback Dolphin	<i>Delphinus delphis</i>	MMPA-CA2	Un
Spotted Dolphin	<i>Stenella plagiodon</i>	MMPA-CA2	Un
Striped Dolphin	<i>Stenella coeruleoalba</i>	MMPA-CA2	Un
Bottlenosed Dolphin	<i>Tursiops truncatus</i>	MMPA-CA2	Un
Grampus (Rissols Dolphin)	<i>Grampus griseus</i>	MMPA-CA2	Un
White-beaked Dolphin	<i>Lagenorhynchus albirostris</i>	MMPA-CA2	Un
Atlantic White-sided Dolphin	<i>Lagenorhynchus acutus</i>	MMPA-CA2	Un
Atlantic Pilot Whale	<i>Globicephala melaena</i>	MMPA-CA2	Un
Harbor Porpoise	<i>Phocoena phocoena</i>	MMPA-CA2	P-SC
Sperm Whale	<i>Physeter catodon</i>	MMPA-E-CA1	E
Pygmy Sperm Whale	<i>Kogia breviceps</i>	MMPA-CA2	Un
Fin Whale	<i>Balaenoptera physalus</i>	MMPA-E-CA1	E
Sei Whale	<i>Balaenoptera borealis</i>	MMPA-E-CA1	E

E = Endangered

T = Threatened

SC = Special Concern

MMPA = Marine Mammal Protection Act

MBTA = Migratory Bird Treaty Act

Un = Unprotected

SR = Special Regulations

PB = Protected Bird

P = Protected Wildlife

GS = Game (Season Set)

GN = Game (No Season)

CA1 = CITES Appendix 1

CA2 = CITES Appendix 2

CA3 = CITES Appendix 3

\* Non-native

## MAMMALS (cont.)

<u>COMMON NAME</u>	<u>SCIENTIFIC NAME</u>	<u>LEGAL STATUS</u>	
		<u>FEDERAL</u>	<u>STATE</u>
Minke Whale	<i>Balaenoptera acutorostrata</i>	MMPA-CA1	Un
Humpback Whale	<i>Megaptera novaeangliae</i>	MMPA-E-CA1	E
Right Whale	<i>Eubalaena glacialis</i>	MMPA-E-CA1	E
<b><u>Ungulates</u></b>			
White-tailed Deer	<i>Odocoileus virginianus</i>	Un	GS
Moose	<i>Alces alces</i>	Un	GN
<b><u>Rodents</u></b>			
Eastern Chipmunk	<i>Tamias striatus</i>	Un	Un
Woodchuck	<i>Marmota monax</i>	Un	Un
Gray Squirrel	<i>Sciurus carolinensis</i>	Un	GS
Fox Squirrel	<i>Sciurus niger</i>	Un	GS
Red Squirrel	<i>Tamiasciurus hudsonicus</i>	Un	Un
Southern Flying Squirrel	<i>Glaucomys volans</i>	Un	Un
Northern Flying Squirrel	<i>Glaucomys sabrinus</i>	Un	Un
Beaver	<i>Castor canadensis</i>	Un	GS
Deer Mouse	<i>Peromyscus maniculatus</i>	Un	Un
White-footed Mouse	<i>Peromyscus leucopus</i>	Un	Un
Alleghany Woodrat	<i>Neotoma magister</i>	Un	E
Southern Red-backed Vole	<i>Clethrionomys gapperi</i>	Un	Un
Meadow Vole	<i>Microtus pennsylvanicus</i>	Un	Un
Rock Vole	<i>Microtus chrotorrhinus</i>	Un	Un
Pine Vole	<i>Pitymys pinetorum</i>	Un	Un
Muskrat	<i>Ondatra zibethicus</i>	Un	GS
Southern Bog Lemming	<i>Synaptomys cooperi</i>	Un	Un
Black Rat*	<i>Rattus rattus</i>	Un	Un
Norway Rat*	<i>Rattus norvegicus</i>	Un	Un
House Mouse*	<i>Mus musculus</i>	Un	Un
Meadow Jumping Mouse	<i>Zapus hudsonius</i>	Un	Un
Woodland Jumping Mouse	<i>Napaeozapus insignis</i>	Un	Un
Porcupine	<i>Erethizon dorsatum</i>	Un	Un
<b><u>Rabbits and Hares</u></b>			
Eastern Cottontail	<i>Sylvilagus floridanus</i>	Un	GS
New England Cottontail	<i>Sylvilagus transitionalis</i>	Un	P-SC
Varying Hare	<i>Lepus americanus</i>	Un	GS

E = Endangered

T = Threatened

SC = Special Concern

MMPA = Marine Mammal Protection Act

MBTA = Migratory Bird Treaty Act

Un = Unprotected

SR = Special Regulations

PB = Protected Bird

P = Protected Wildlife

GS = Game (Season Set)

GN = Game (No Season)

CA1 = CITES Appendix 1

CA2 = CITES Appendix 2

CA3 = CITES Appendix 3

\* Non-native

## RARELY ENCOUNTERED SPECIES

<u>COMMON NAME</u>	<u>SCIENTIFIC NAME</u>	<u>LEGAL STATUS</u>	
		<u>FEDERAL</u>	<u>STATE</u>
<b>REPTILES</b>			
Atlantic Hawksbill Seaturtle	<i>Eretmochelys imbricata</i>	E-CA1	E
<b>BIRDS</b>			
Leach's Storm-Petrel	<i>Oceanodroma leucorhoa</i>	MBTA	PB
American White Pelican	<i>Pelecanus erythrorhynchos</i>	MBTA	PB
Magnificent Frigatebird	<i>Fregata magnificens</i>	MBTA	PB
White Ibis	<i>Eudocimus albus</i>	MBTA	PB
White-faced Ibis	<i>Plegadis chihi</i>	MBTA	PB
Wood Stork	<i>Mycteria americana</i>	MBTA-E	PB
Fulvous Whistling-Duck	<i>Dendrocygna bicolor</i>	MBTA-CA3	PB-GS
Greater White-fronted Goose	<i>Anser albifrons</i>	MBTA	PB-GS
Ross's Goose	<i>Chen rossii</i>	MBTA	PB-GS
Barnacle Goose	<i>Branta leucopsis</i>	MBTA	PB-GS
Cackling Goose	<i>Branta hutchinsii</i>	MBTA	PB-GS
Tufted Duck	<i>Aythya fuligula</i>	MBTA	PB-GS
Swallow-tailed Kite	<i>Elanoides forficatus</i>	MBTA	PB
Mississippi Kite	<i>Ictinia mississippiensis</i>	MBTA	PB
Swainson's Hawk	<i>Buteo swainsoni</i>	MBTA-CA2	PB
Gyr Falcon	<i>Falco rusticolus</i>	MBTA-CA1	PB
Sandhill Crane	<i>Grus canadensis</i>	MBTA	PB
Wilson's Plover	<i>Charadrius wilsonia</i>	MBTA	PB-GS
Black-necked Stilt	<i>Himantopus mexicanus</i>	MBTA	PB-GS
American Avocet	<i>Recurvirostra americana</i>	MBTA	PB-GS
Long-tailed Jaeger	<i>Stercorarius longicaudus</i>	MBTA	PB
Sabine's Gull	<i>Xema sabini</i>	MBTA	PB
Ivory Gull	<i>Pagophila eburnea</i>	MBTA	PB
Arctic Tern	<i>Sterna paradisaea</i>	MBTA	PB
Sooty Tern	<i>Sterna fuscata</i>	MBTA	PB
Common Murre	<i>Uria aalge</i>	MBTA	PB
Thick-billed Murre	<i>Uria lomvia</i>	MBTA	PB
Black Guillemot	<i>Cephus grylle</i>	MBTA	PB
Atlantic Puffin	<i>Fratercula arctica</i>	MBTA	PB
Northern Hawk Owl	<i>Surnia ulula</i>	MBTA-CA2	PB
Great Gray Owl	<i>Strix nebulosa</i>	MBTA-CA2	PB
Boreal Owl	<i>Aegolius funereus</i>	MBTA-CA2	PB
Say's Phoebe	<i>Sayornis saya</i>	MBTA	PB

E = Endangered

T = Threatened

SC = Special Concern

MMPA = Marine Mammal Protection Act

MBTA = Migratory Bird Treaty Act

Un = Unprotected

SR = Special Regulations

PB = Protected Bird

P = Protected Wildlife

GS = Game (Season Set)

GN = Game (No Season)

CA1 = CITES Appendix 1

CA2 = CITES Appendix 2

CA3 = CITES Appendix 3

\* Non-native

## RARELY ENCOUNTERED SPECIES (cont.)

COMMON NAME	SCIENTIFIC NAME	LEGAL STATUS	
		FEDERAL	STATE
Ash-throated Flycatcher	<i>Myiarchus cinerascens</i>	MBTA	PB
Scissor-tailed Flycatcher	<i>Tyrannus forficatus</i>	MBTA	PB
Northern Wheatear	<i>Oenanthe oenanthe</i>	MBTA	PB
Varied Thrush	<i>Ixoreus naevius</i>	MBTA	PB
Western Tanager	<i>Piranga ludoviciana</i>	MBTA	PB
Lark Bunting	<i>Calamospiza melanocorys</i>	MBTA	PB
Harris's Sparrow	<i>Zonotrichia querula</i>	MBTA	PB
Black-headed Grosbeak	<i>Pheucticus melanocephalus</i>	MBTA	PB
Painted Bunting	<i>Passerina ciris</i>	MBTA	PB
Yellow-headed Blackbird	<i>Xanthocephalus</i>		
	<i>xanthocephalus</i>	MBTA	PB
Hoary Redpoll	<i>Carduelis hornemanni</i>	MBTA	PB

## MAMMALS

Gray Wolf	<i>Canis lupus</i>	E-CA2	E
Least Weasel	<i>Mustela nivalis</i>	Un GS	
Canada Lynx	<i>Lynx canadensis</i>	T-CA2	GN-T
Ringed Seal	<i>Phoca hispida</i>	MMPA	Un
Killer Whale	<i>Orcinus orca</i>	MMPA-CA2	Un
Beluga	<i>Delphinapterus leucas</i>	MMPA-CA2	Un
Dense-beaked Whale	<i>Mesoplodon densirostris</i>	MMPA-CA2	Un
Antillean Beaked Whale	<i>Mesoplodon europaeus</i>	MMPA-CA2	Un
True's Beaked Whale	<i>Mesoplodon mirus</i>	MMPA-CA2	Un
Goose-beaked Whale	<i>Ziphius cavirostris</i>	MMPA-CA2	Un
Blue Whale	<i>Balaenoptera musculus</i>	MMPA-E-CA1	E

E = Endangered

T = Threatened

SC = Special Concern

MMPA = Marine Mammal Protection Act

MBTA = Migratory Bird Treaty Act

Un = Unprotected

SR = Special Regulations

PB = Protected Bird

P = Protected Wildlife

GS = Game (Season Set)

GN = Game (No Season)

CA1 = CITES Appendix 1

CA2 = CITES Appendix 2

CA3 = CITES Appendix 3

\* Non-native