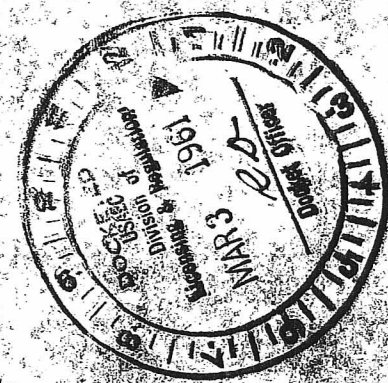


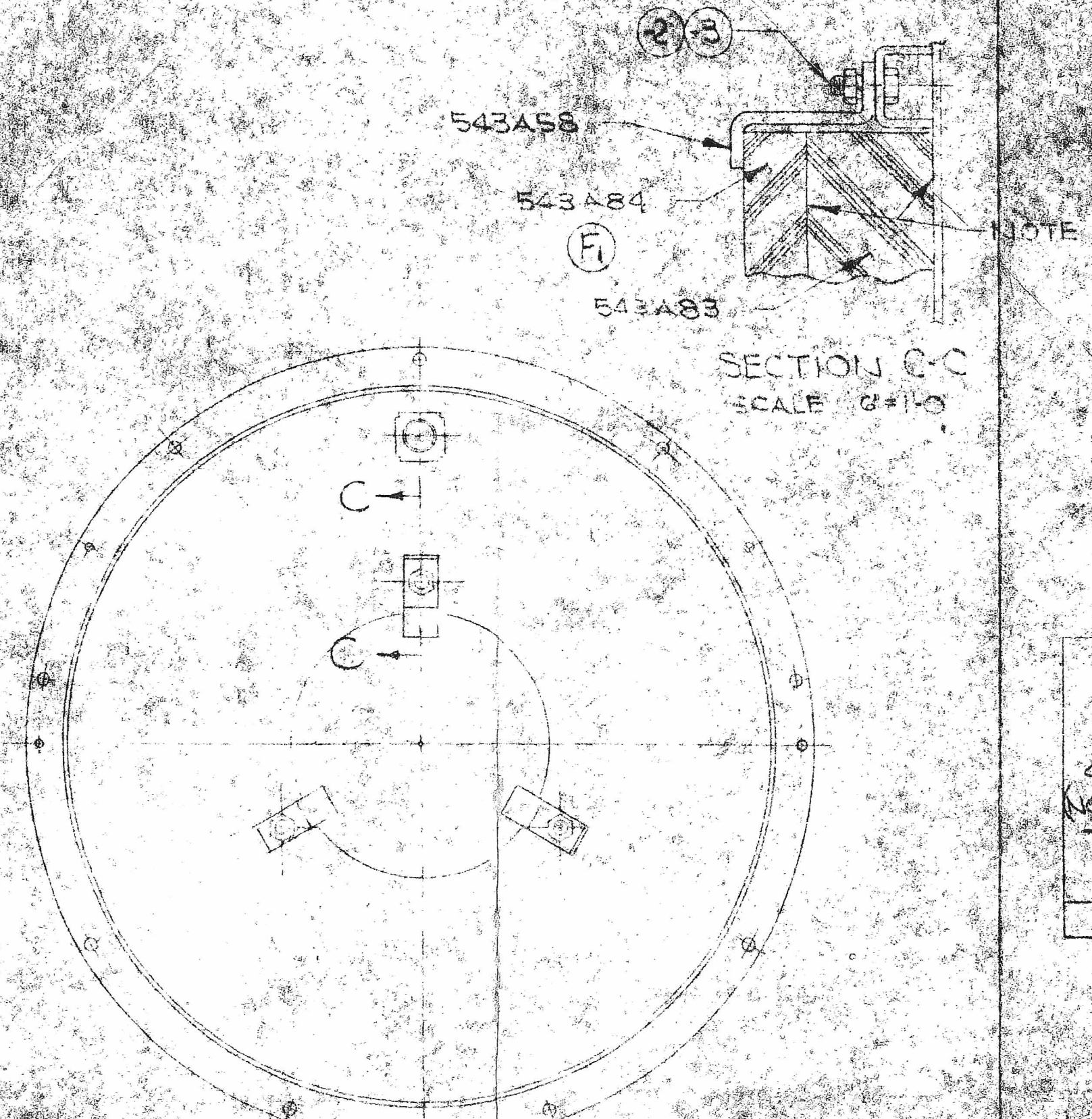
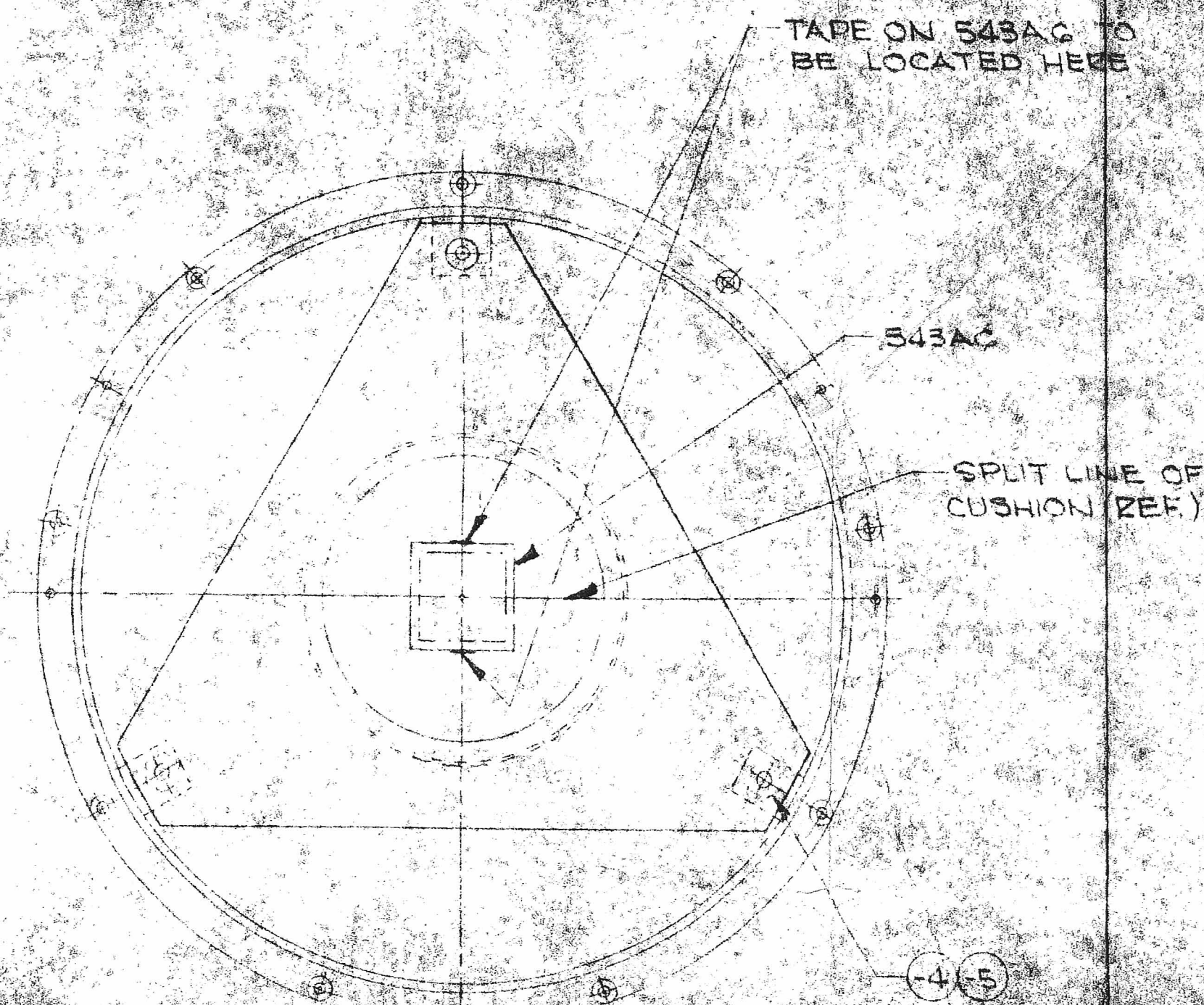
DOCKET NO. 70-134

Open as early as possible of 1-3-61



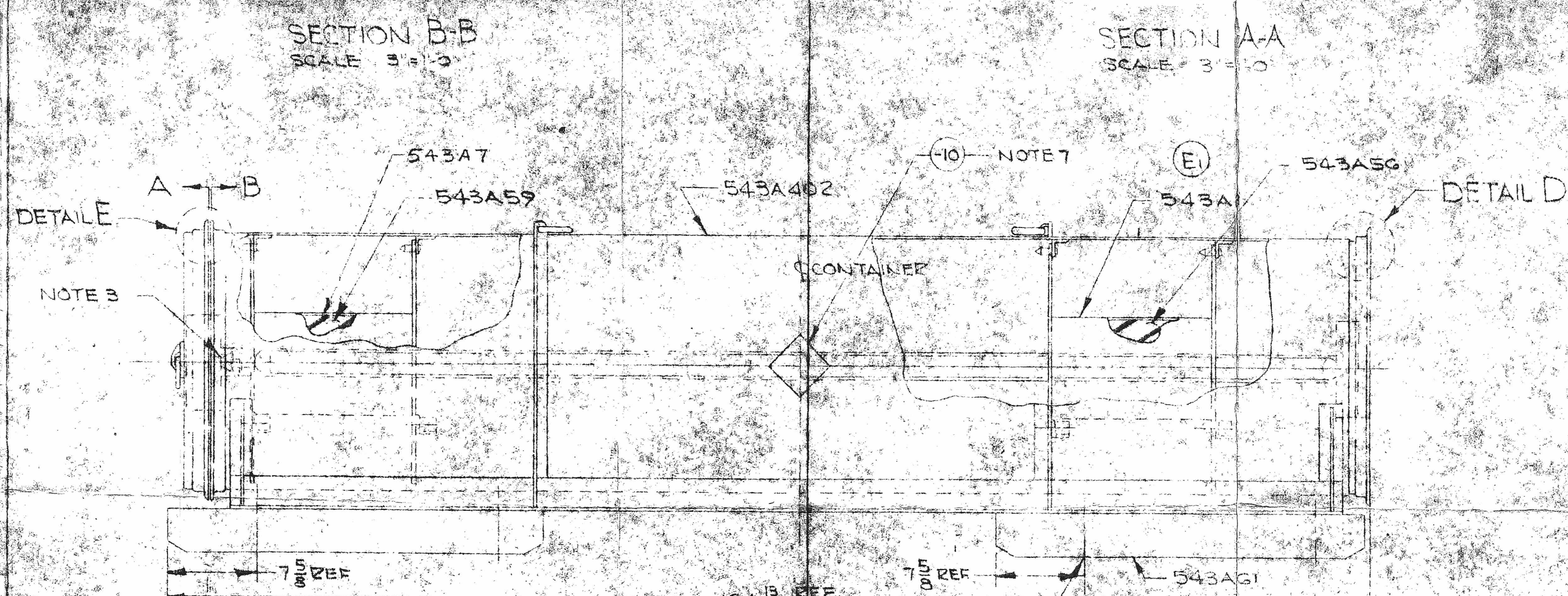
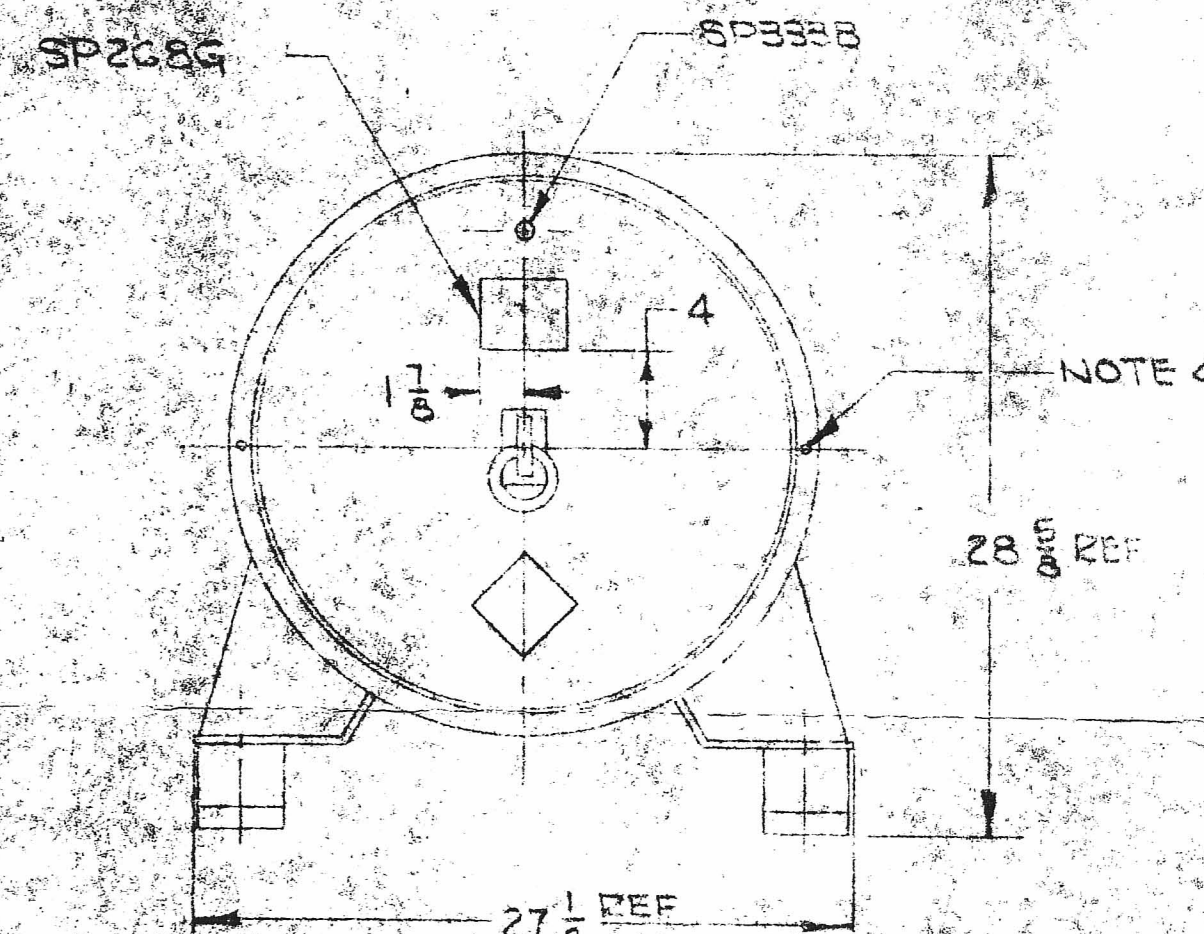
NOTE

1. CEMENT PER SHOP SP1000A
2. PRESSURE TEST TO 5 PSIG
3. CLOSE BAG 543AG BY FOLDING FLAP
4. LOCKWIRE TO BE SUPPLIED & INSTALLED BY CUSTOMER.
5. STENCIL PER DRAWING 543A99
6. SP1000A APPLIES
7. ADD LABEL TO FOUR SIDES OF THE CONTAINER EACH TIME A CORE SHIPMENT IS MADE REMOVE OR DESTROY WHEN CONTAINER IS SHIPPED WITHOUT CORE.



SYM	DESCRIPTION	DATE	APPROVAL
D	REDRAWN & REVISED	8-29-59	AEJ
E	ADDED 543A88, 543A87, 543A84, 543A83, 543A82, 543A81	8-29-59	AEJ
F	543A83 WAS 543A83, 543A84 WAS 543A84	11-27-59	AEJ

4	NOTE 7	LABEL RADIOACTIVE MATERIAL FOR GROUP I OR II PER PARAGRAPH 73.44 SECTION 2 IN ACCORDANCE WITH I.C.C. REGULATIONS, TARIFF NO. 10 ISSUED MAY 18, 1957		
CUSTOMER SUPPLIED MATERIAL				



QTY	SYM	DESCRIPTION	MATL	UNIT WT
1	-9	1/8" HD PIPE PLUG CRANE CO. MICHIGAN AVE. CHICAGO ILL. OR EQUIV.	CAD PLATED STL	COMMERCIAL
8	-8	1/2" WROUGHT WASHER	STL	SP1000A
8	-7	1/2-13" HEX NUT	STL	SP1000A
8	-6	1/2-13 1/4" HEX HD CAP SCW	STL	SP1000A
10	-5	1/2" MED. LOCK WASHER	STL	SP1000A
8	-4	1/2-20" PIN. HEX NUT	STL	SP1000A
6	-3	3/8" MED. LOCK WASHER	STL	SP1000A
15	-2	3/8-24" PIN. HEX NUT	STL	SP1000A
9	-1	3/8-24" HEX HD CAP SCW	STL	SP1000A

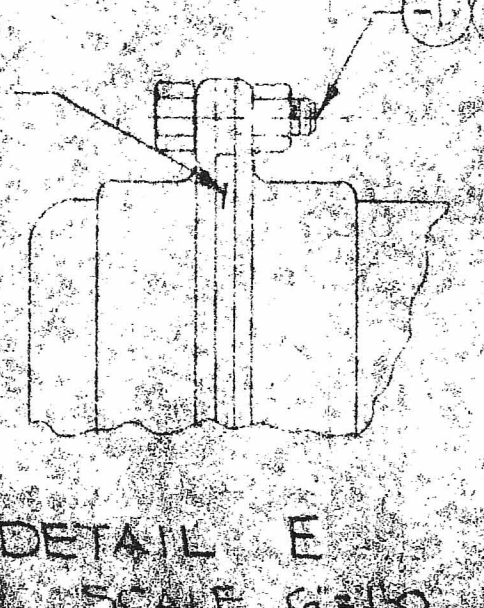
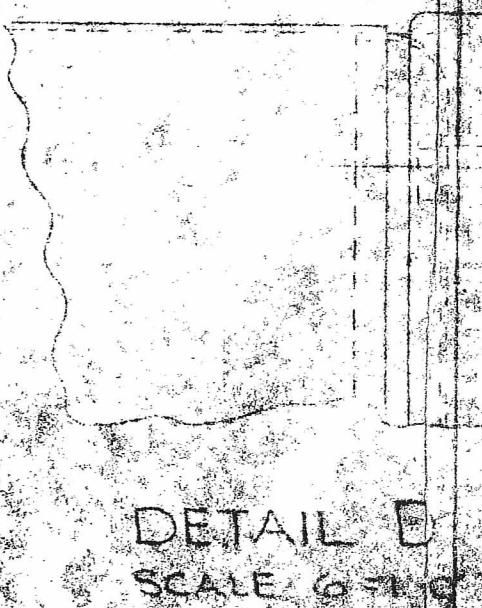
543A1

1	543AB	TUNNEL ASSY		
1	SP338B	HUMIDITY INDICATOR		
1	SP268G	NAMERPLATE DECAL		
1	543A402	CONTAINER ASSY		

QTY	SYM	DESCRIPTION	MATL	UNIT WT
1	543A99	STENCILING		
2	543A59	CUSHION		
2	543A84	RAD. NOT TO BE USED FOR FABRICATION		
2	543A83	CUSHION		
1	543A19	GASKET		
4	543AG1	SKID		
6	543A58	STEAD OR FABRICATION OF TOOLS		
2	543A56	CUSHION OR FIXTURES		
1	543A7	TUNNEL ASSY		
1	543AG	BAG ASSY		

LIST OF MATERIAL

REQD	PART NO.	DESCRIPTION	MATL	MATL SPEC	UNIT WT



UNLESS OTHERWISE SPECIFIED DIMENSIONS ARE IN INCHES	DATE
TOLERANCES ON FRACTIONS DECIMALS ANGLES	DRAWN BY: 10-9-59
	GEN CHK: 2-10-59
MATERIAL:	STRESS:
FINAL	FUNCTION:
NEXT ASST	MATERIAL APPROVED: HEM/11/6
USED ON	
APPLICATION	

CONTAINER FOR PIN TYPE CORE FOR POWER REACTOR DEVELOPMENT CO.

Applied Design COMPANY  
BUFFALO, N. Y.  
543A1  
D SHEET