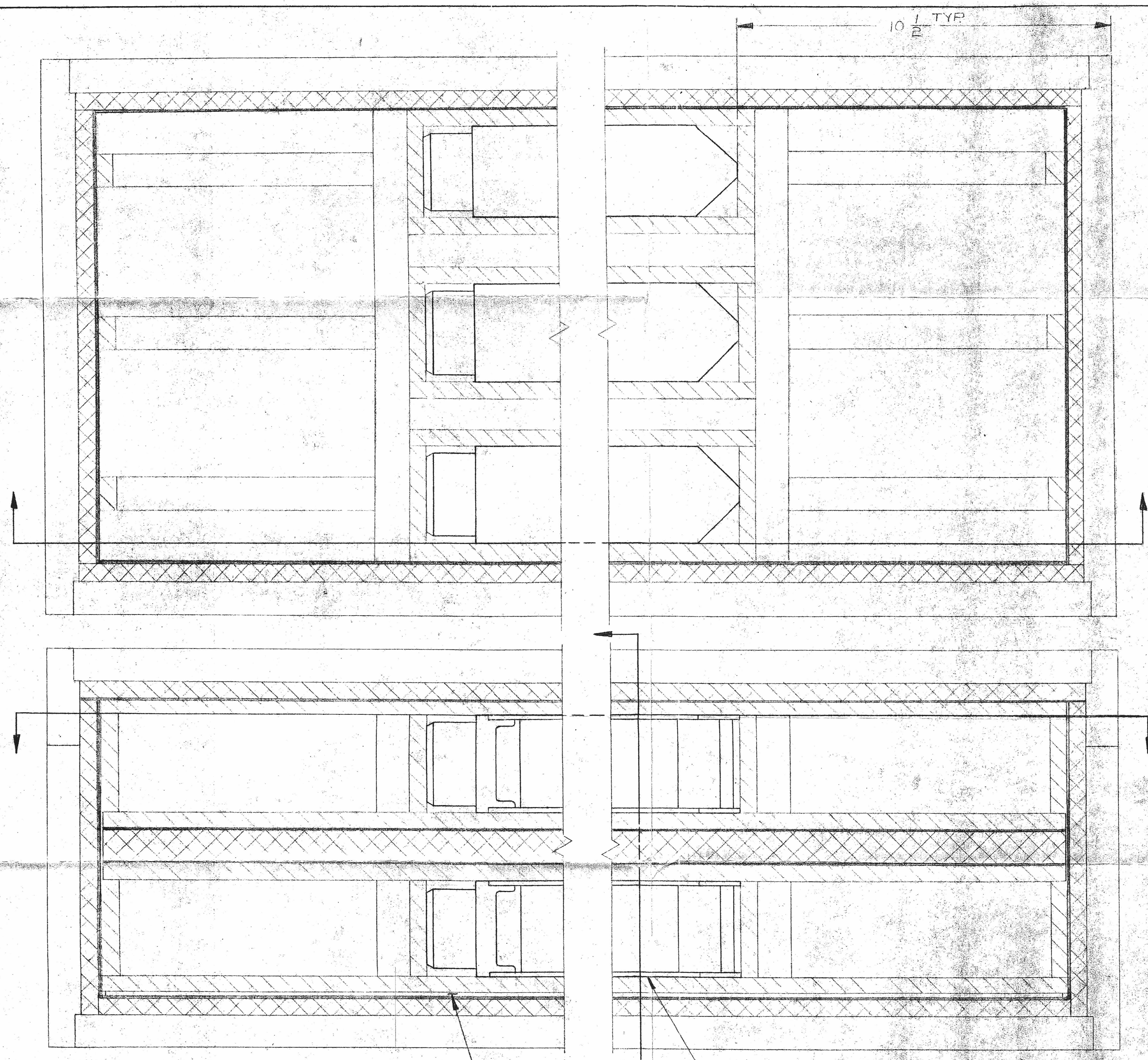
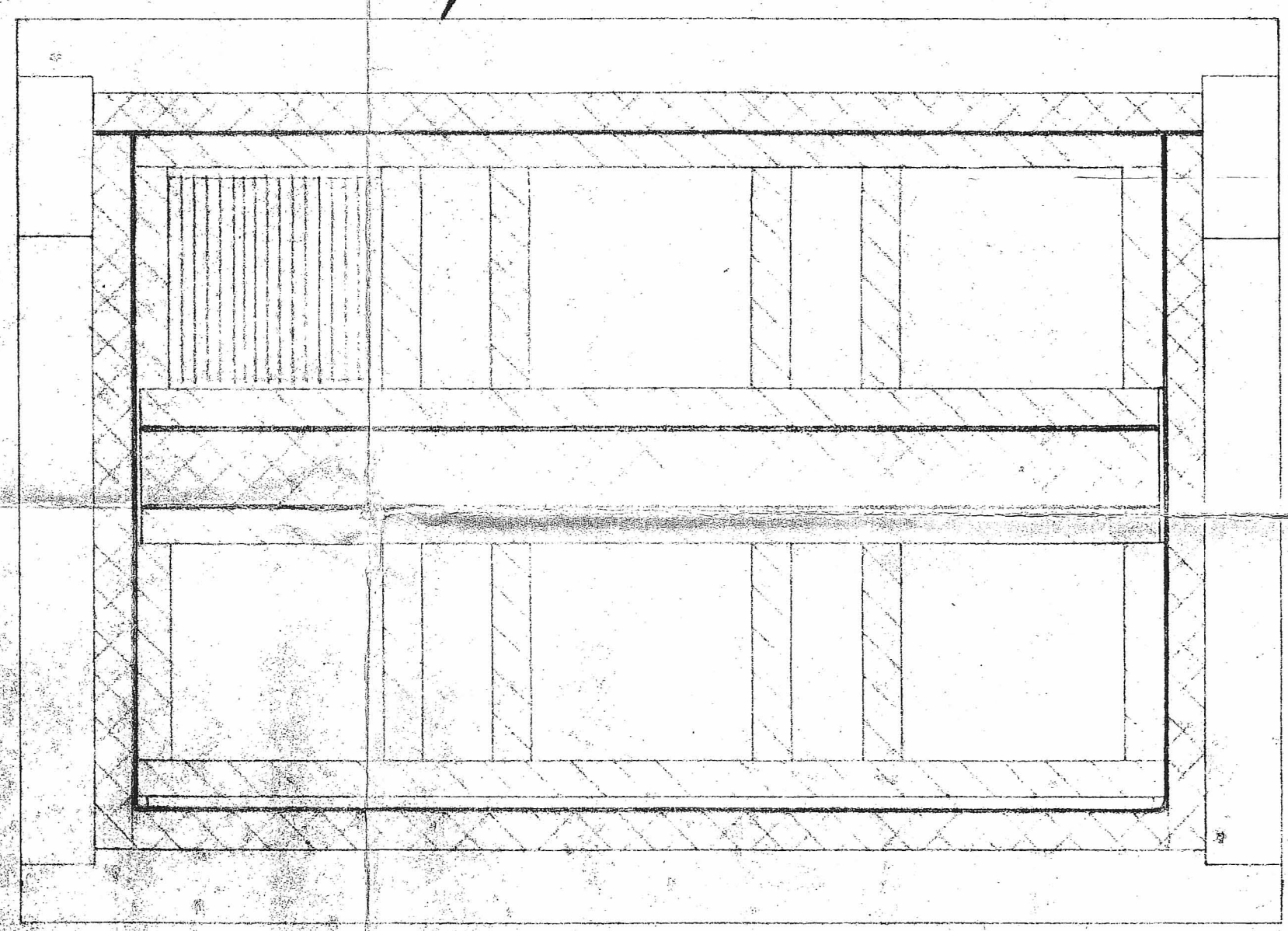


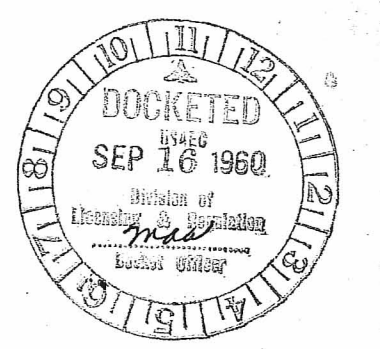
CHG. LET.	DESCRIPTION	DATE	BY	APP.	CHG. NO.



UNIVERSAL SHIPPING CONTAINER DEM. DWG. 50084



DOCKET NO. 70-129
 File by
 Trans. w/lt. 9.13.60



D-12

SECTION LINE IDENTIFICATION

- POLYETHYLENE, HIGH DENSITY 1" THICK FOR CENTER PIECE - 1/2" THICK FOR ALL OTHER LINING
- AIR FOAM RUBBER 1/2" THICK
- CADMIUM .020" THICK
- BLANK SECTIONS 1" THICK WATER PROOF PLYWOOD

WADC FUEL ELEMENT DIM. 3" WIDE, 3" HIGH X 29 1/2 LG.

3/16" THICK PLYWOOD FILLER

G-2 QUANTITY	G-1 ITEM NO.	DRAWING NO.	DESCRIPTION	PROJECT NO.	USED ON ASS'Y
TOLERANCES UNLESS OTHERWISE SPECIFIED		APPROVED	DATE	FINISH & SPECIFICATION	TITLE
DECIMAL	± .005	<i>D. E. Makepeace</i>	7/2/60	MATERIAL & SPECIFICATION	UNIVERSAL SHIPPING CONTAINER
FRACTIONAL	± 1/64"	CHECKED		APPROVED	SHOWING WADC 19 PLATE FUEL ELEMENT PACKING INSERTS
ANGULAR	± 1/4°	APPROVED			
BREAK ALL SHARP EDGES REMOVE ALL BURRS		ENGELHARD INDUSTRIES, INC. D. E. MAKEPEACE DIVISION ATTLEBORO, MASS.		SCALE 1/2" = 1"	SIZE D DRAWING NO. 50085 REV.