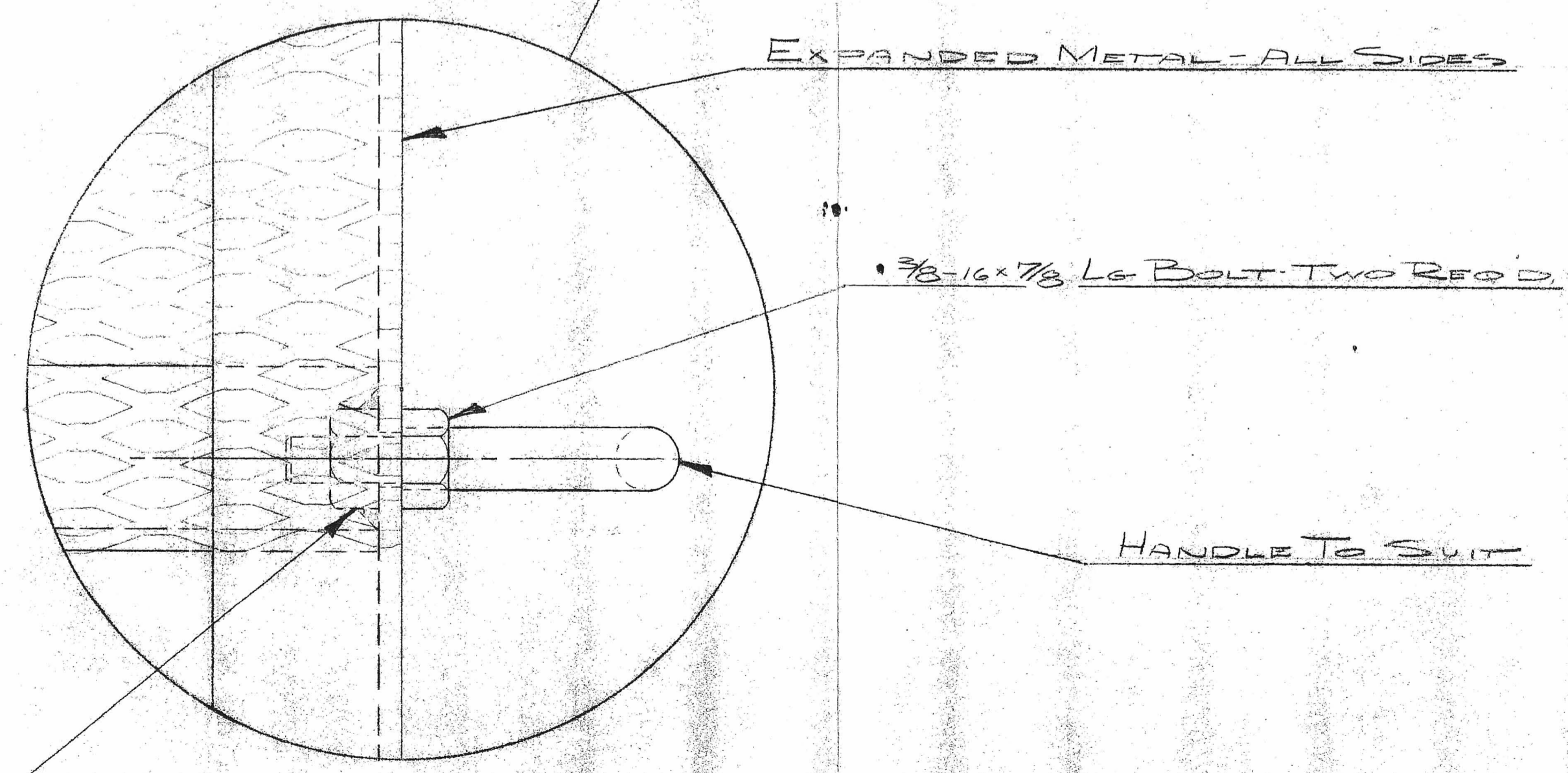


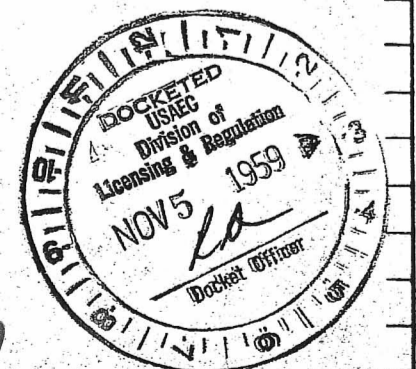
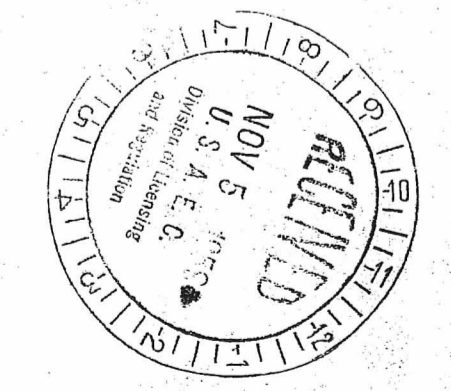
WELDED CONSTRUCTION  
ANGLE IRON - 1/2 x 1/2 x 1/8



Bill of Material

AMT REQ'D	DESCRIPTION
10	20' LENGTHS 1/2 x 1/2 x 1/8 J
1	13 x 5" I.D. CAST IRON PIPE
2	END CAPS FOR ABOVE
4	5 x 1/4" SQ. STEEL PLATE
4	CASTERS
153 SQ FT	EXPANDED METAL
12 FT	3/16 x 1/4 FLAT STOCK STEEL

DOCKET NO. 70-139  
File by  
(Drawn w/lt. of 11/2/59)



D-07

G-2 QUANTITY	G-1 ITEM NO.	ITEM NO.	DRAWING NO.	DESCRIPTION	PROJECT NO.	USED ON ASS'Y
TOLERANCES UNLESS OTHERWISE SPECIFIED		APPROVED	DATE	FINISH & SPECIFICATION	TITLE	
DECIMAL	± .005"	DRAWN	11/2/59	MATERIAL & SPECIFICATION	SHIPPING CONTAINER	
FRACTIONAL	± 1/64"	CHECKED			FOR P.R.D.C.	
ANGULAR	± 1/2°	APPROVED			Extrusions	
BREAK ALL SHARP EDGES REMOVE ALL BURRS		ENGELHARD INDUSTRIES, INC.		SCALE	SIZE	DRAWING NO.
		D. E. MAKEPEACE DIVISION		1/2" = 1'	D	1062-1
		ATTLEBORO, MASS.				REV.