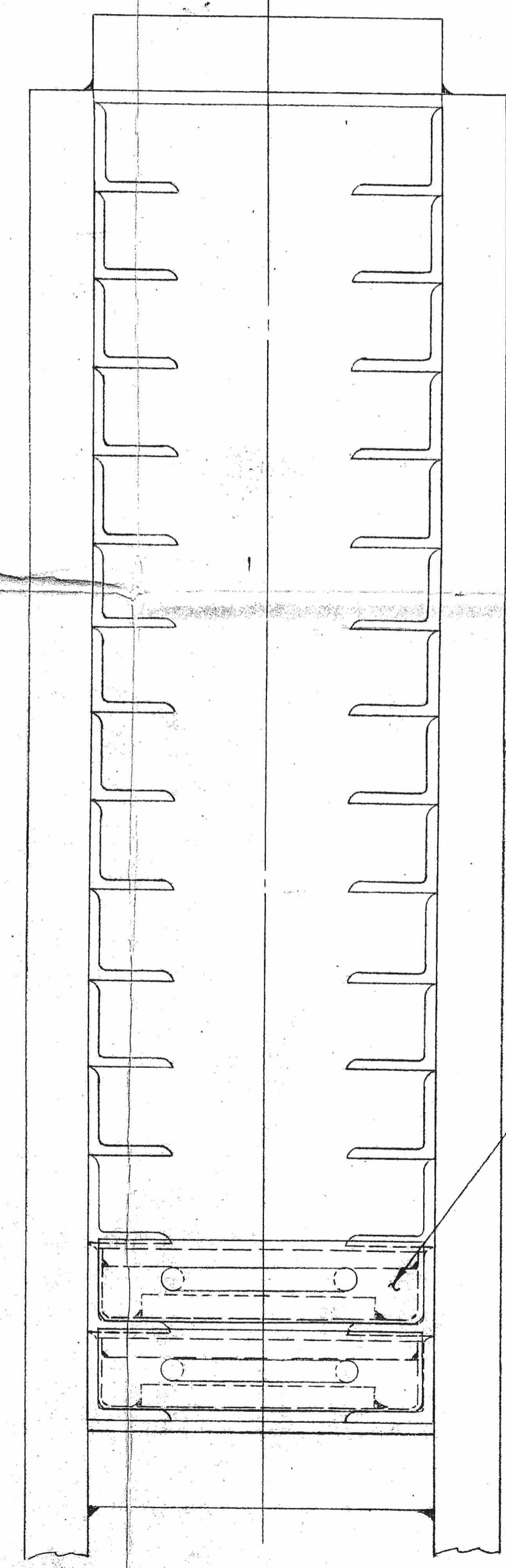
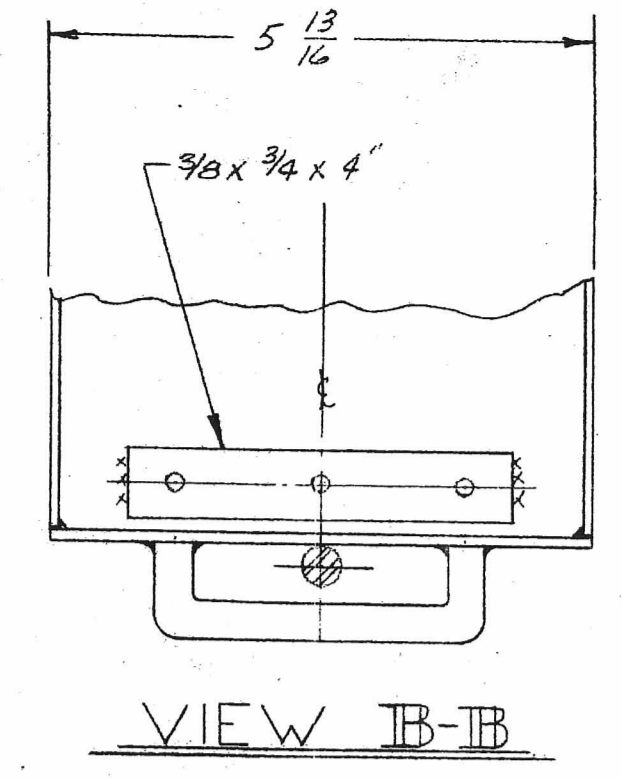
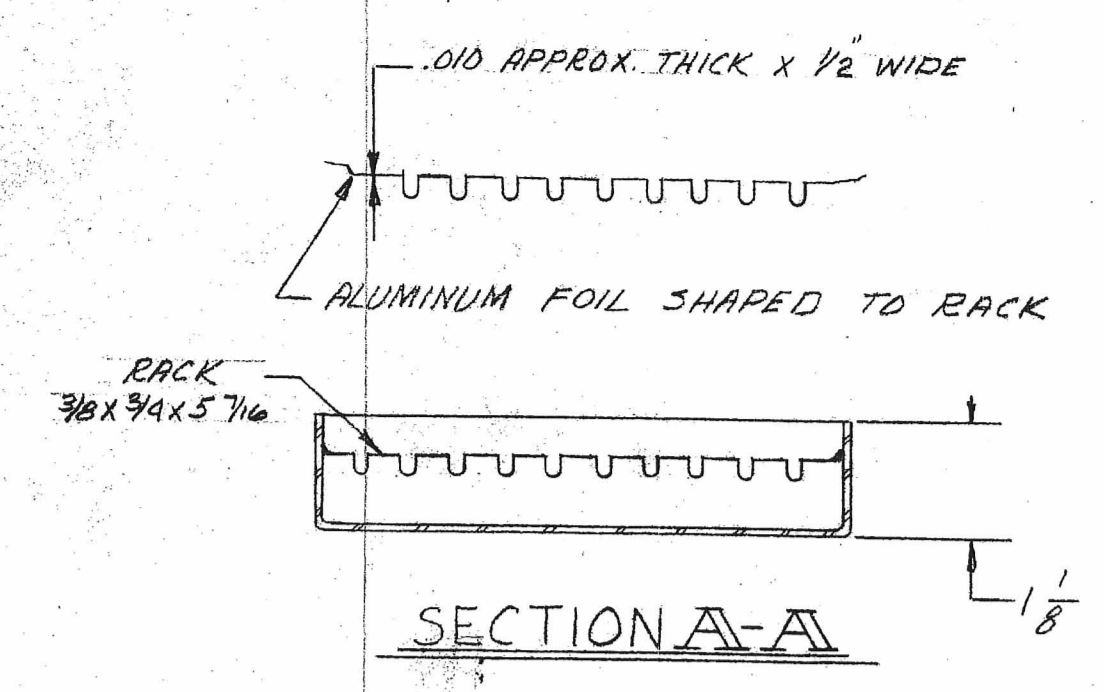
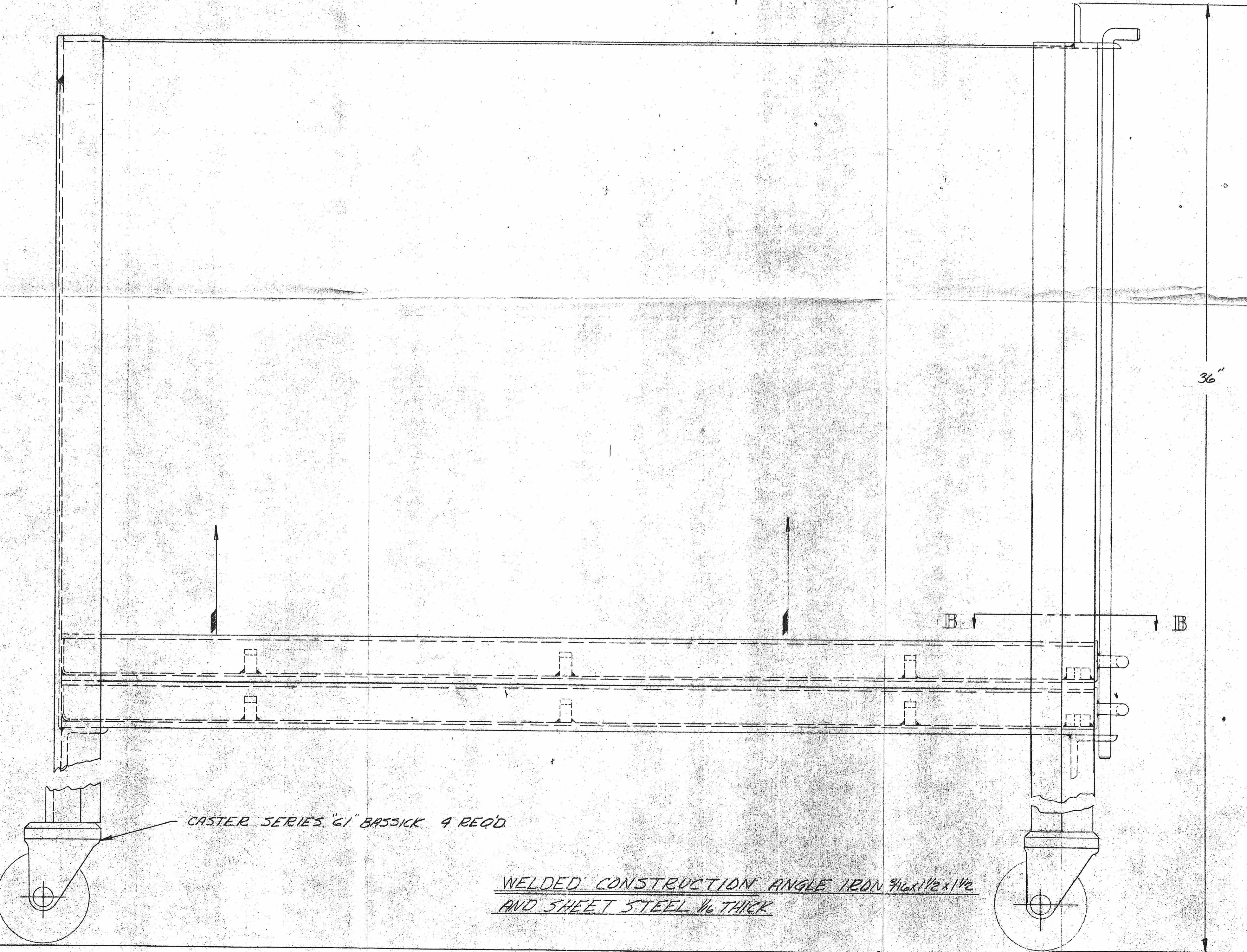
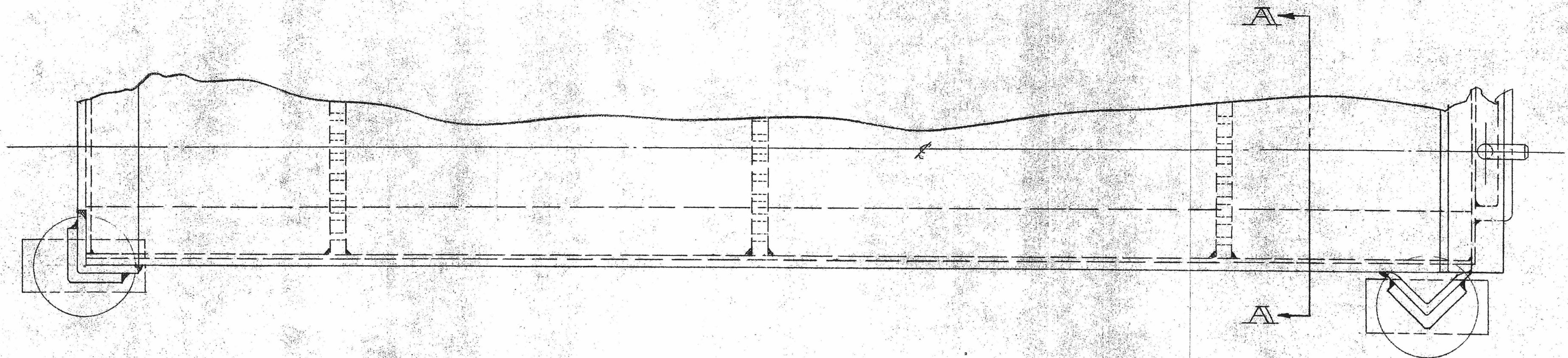
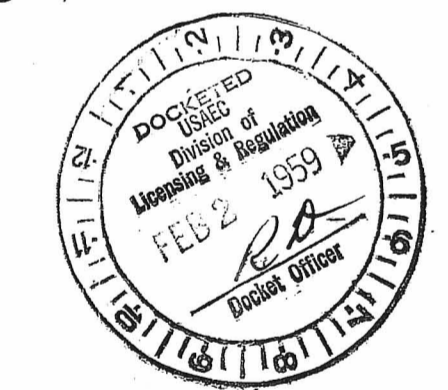


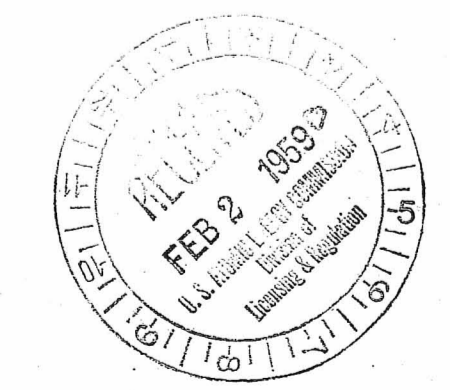
CHG. LET.	DESCRIPTION	DATE	BY	APP.	CHG. NO.



DOCKET NO. 70-139
 (Issued by the office of 1/30/57)



15 TRAYS TO HOLD 10 PINS EACH & 3 SLUGS.



D-06

CASTER SERIES "G" BASSICK 4 REQ'D

WELDED CONSTRUCTION ANGLE IRON 3/16 x 1/2 x 1/2 AND SHEET STEEL 1/16 THICK

G-2 QUANTITY	G-1 ITEM NO.	ITEM NO.	DRAWING NO.	DESCRIPTION	PROJECT NO.	USED ON ASS'Y

TOLERANCES UNLESS OTHERWISE SPECIFIED	APPROVED	DATE	FINISH & SPECIFICATION	TITLE
DECIMAL ± .005	DRAWN	1/22-59	MATERIAL & SPECIFICATION	P.R.O.C. (TEMP.)
FRACTIONAL ± 1/64"	CHECKED		AS NOTED	METAL CABINET FOR HOLDING 150 PINS
ANGULAR ± 1/4"	APPROVED			

BREAK ALL SHARP EDGES REMOVE ALL BURRS	ENGELHARD INDUSTRIES, INC. D. E. MAKEPEACE DIVISION ATTLEBORO, MASS.	SCALE HALF SIZE	SIZE D	DRAWING NO. 1033-5	REV.
--	--	-----------------	--------	--------------------	------