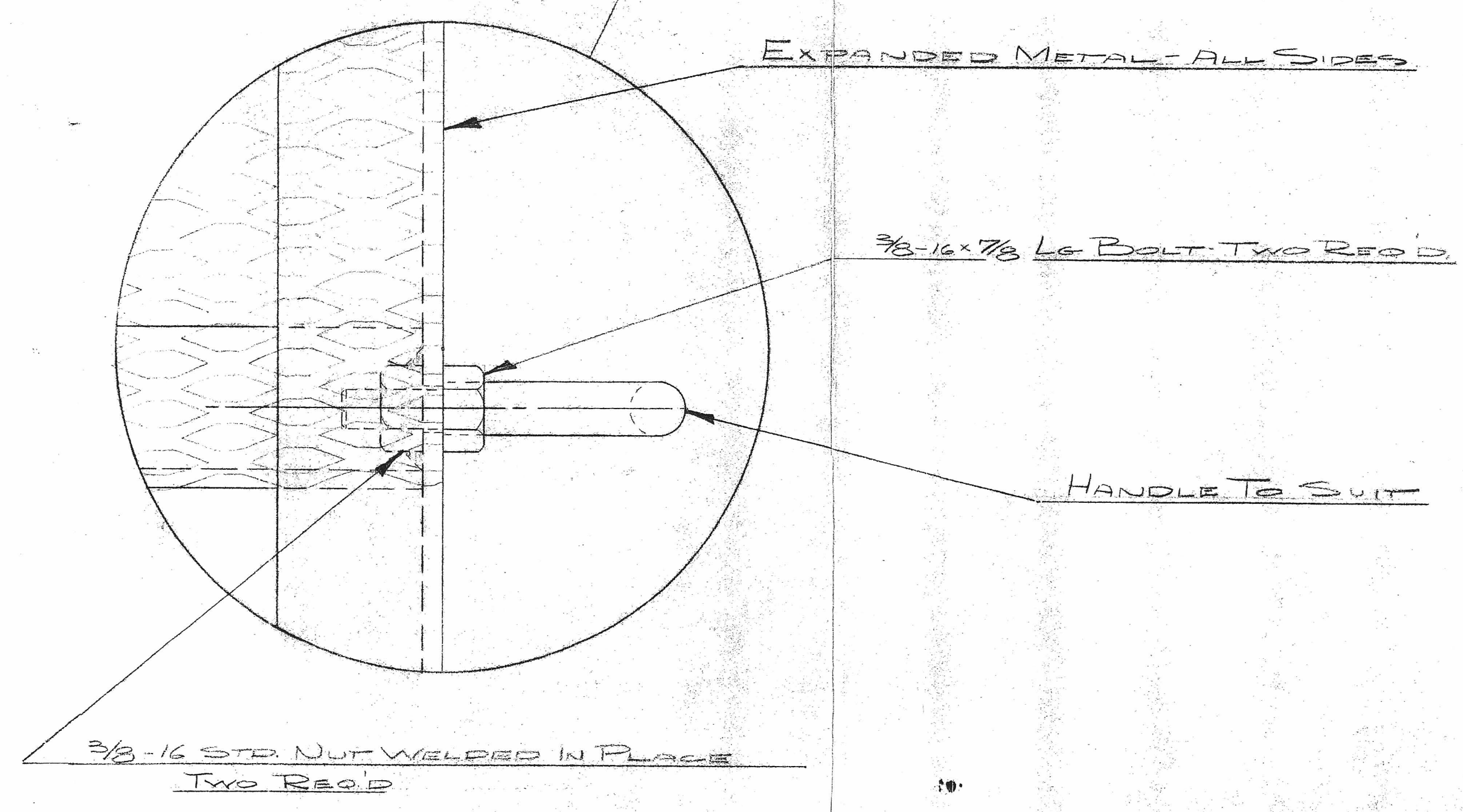


WELDED CONSTRUCTION
ANGLE IRON - 1/2" x 1/2" x 1/8"

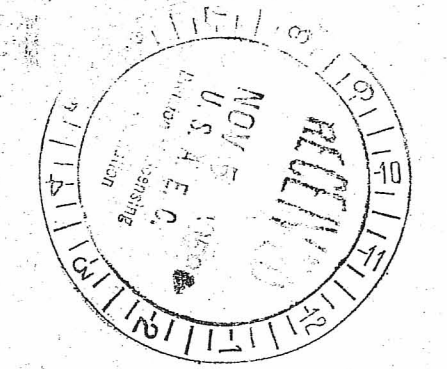


BILL OF MATERIALS

AMT REQ'D	DESCRIPTION
10	20' LENGTHS 1 1/2" x 1/2" x 1/8" J
1	13' x 5' I.D. CAST IRON PIPE
2	END CAPS FOR ABOVE
4	5' x 1/4" S&W STEEL PLATE
4	CASTERS
153 SQ FT	EXPANDED METAL
12 FT	3/16" x 1/4" FLAT STOCK STEEL

DOCKET NO. 70-139

For Div of Inspection



D-03

G-2 QUANTITY	G-1 ITEM NO.	ITEM NO.	DRAWING NO.	DESCRIPTION	PROJECT NO.	USED ON ASSY
TOLERANCES UNLESS OTHERWISE SPECIFIED		APPROVED	DATE	FINISH & SPECIFICATION	TITLE	
DECIMAL	±.005	DRAWN	RJ	10/1/53	SHIPPING CONTAINER	
FRACTIONAL	±.004"	CHECKED			FOR PRDC. Extrusions	
ANGULAR	±.1°	APPROVED				
BREAK ALL SHARP EDGES				D. E. MAKEPEACE DIVISION		SCALE
REMOVE ALL BURRS				ATTLEBORO, MASS.		1 1/2" = 1'
				SIZE	DRAWING NO.	REV.
				D	1062-1	