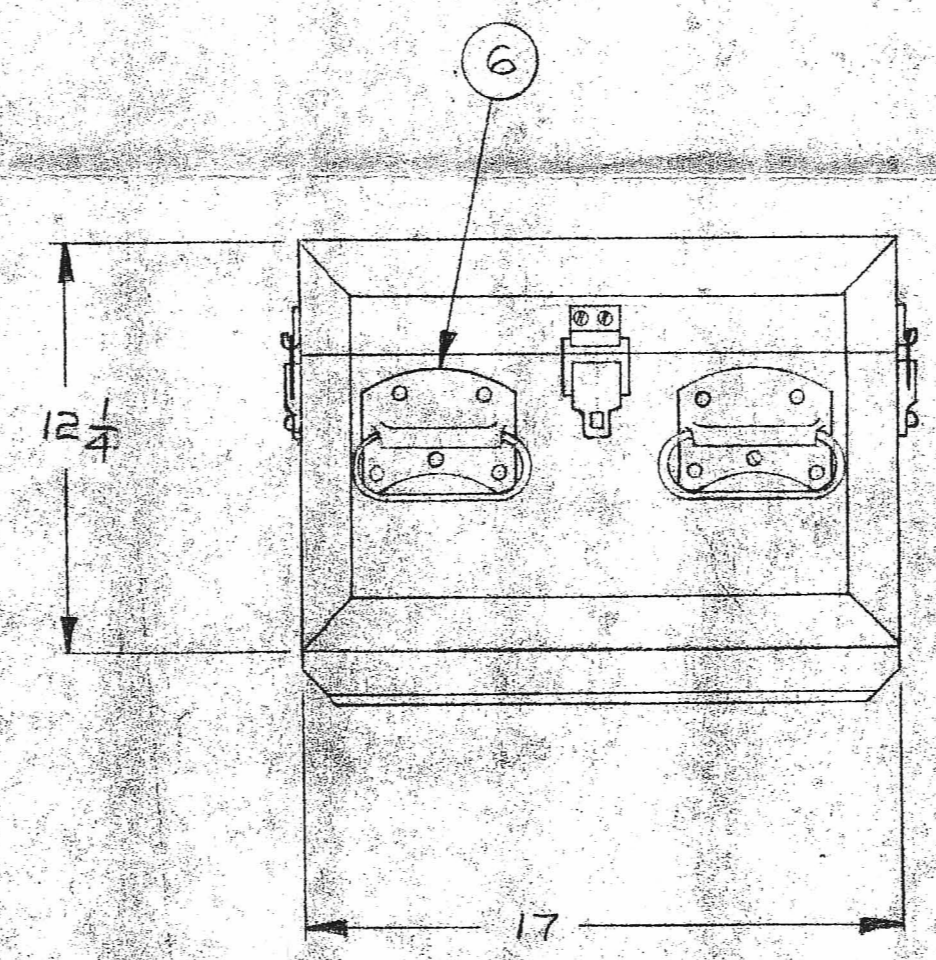
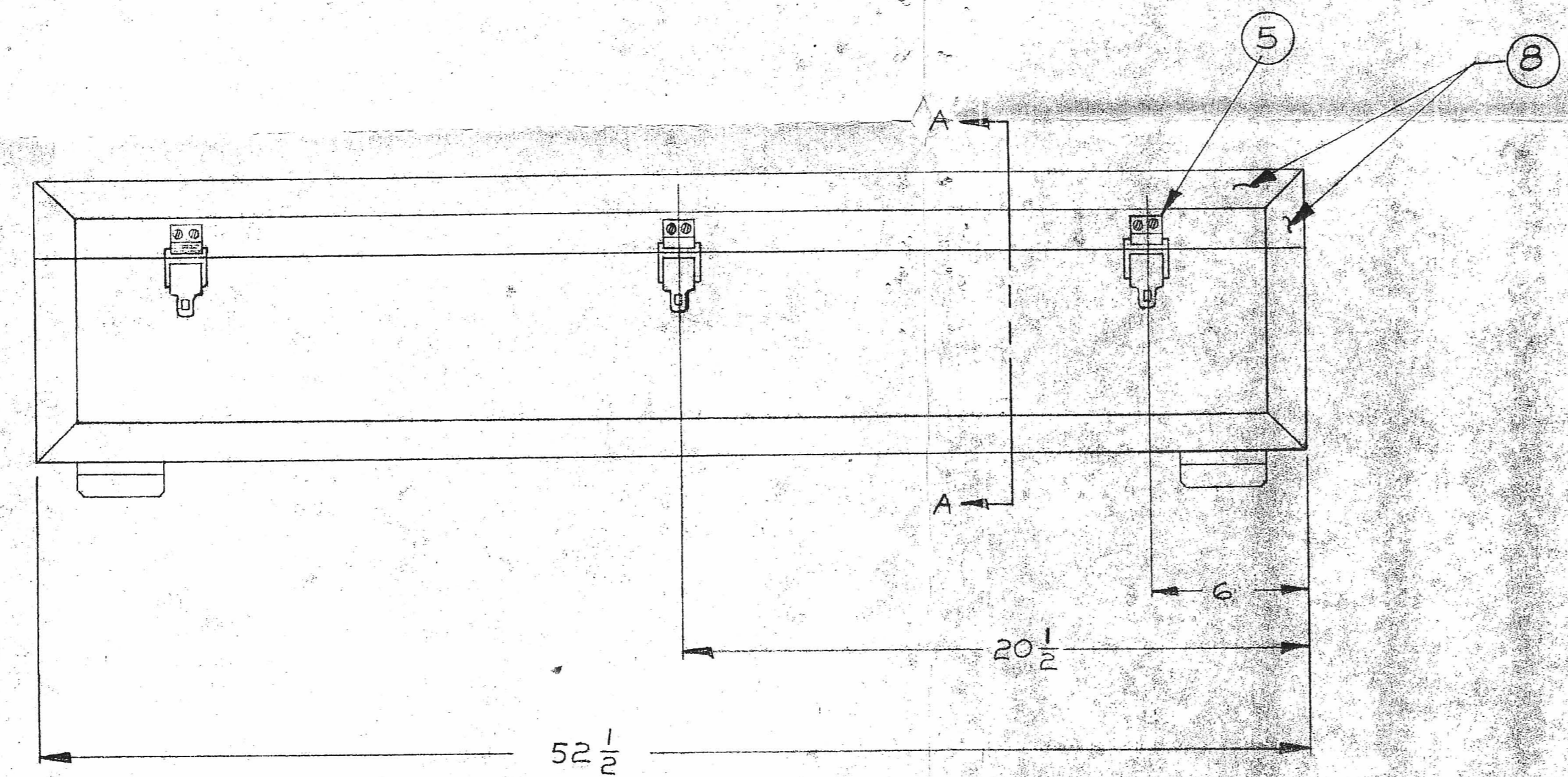
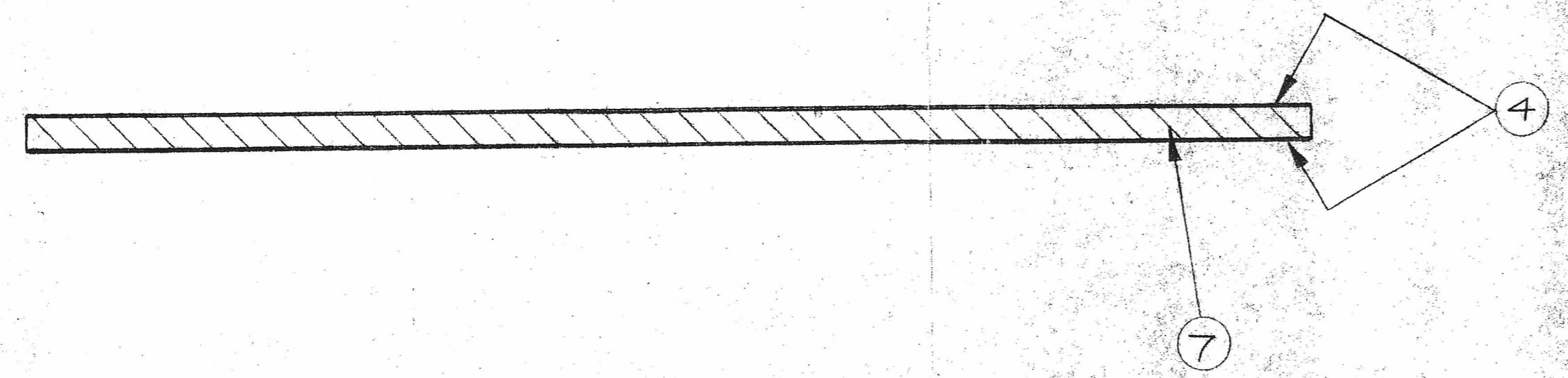
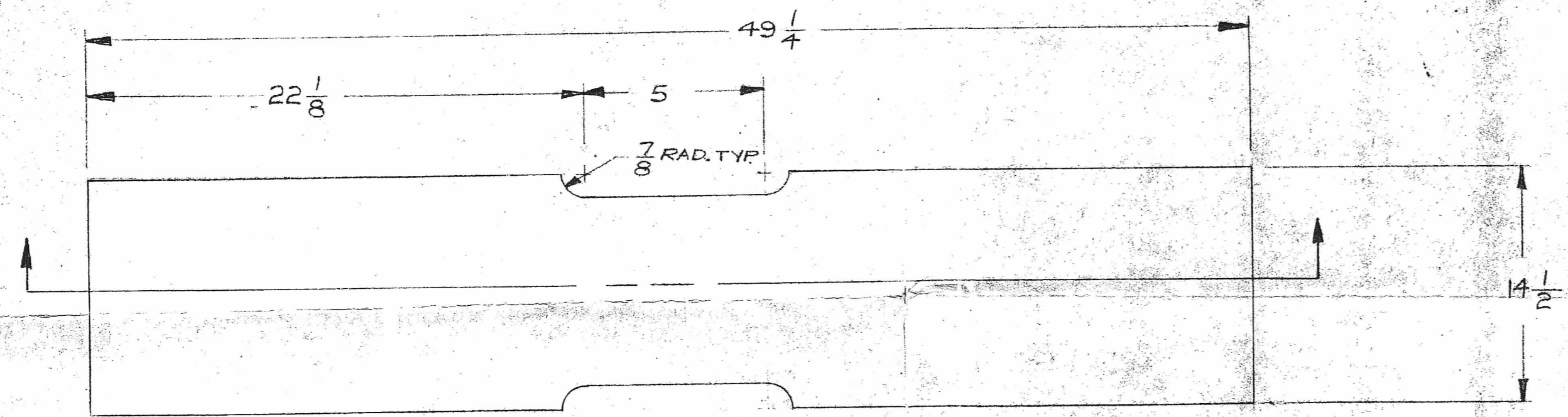
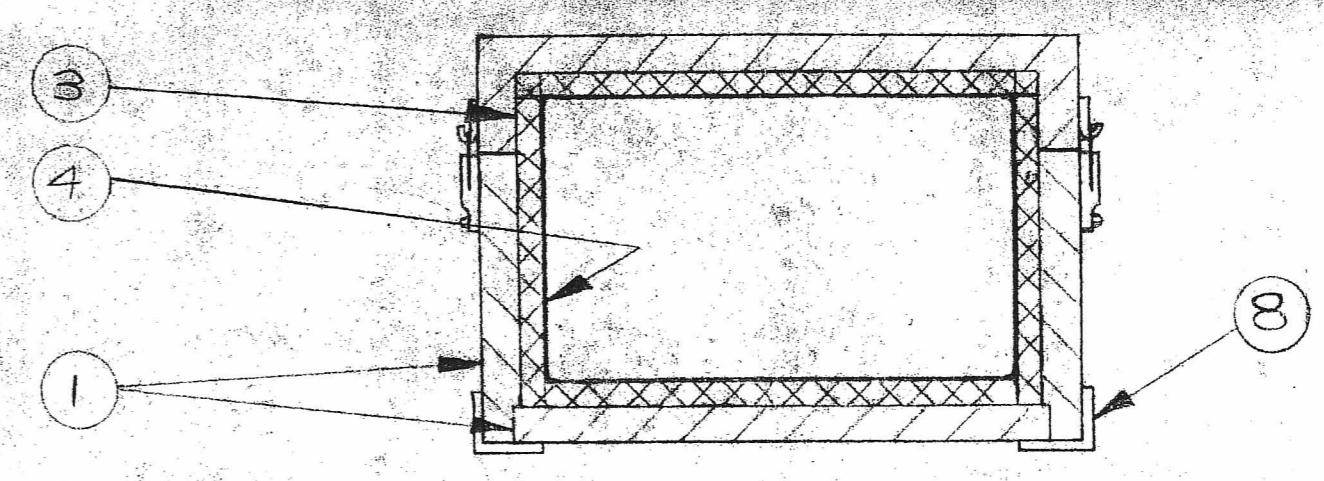


CHG. LET.	DESCRIPTION	DATE	BY	APP.	CHG. NO.



SECTION A-A



DOCKET NO. 71-139
For Div of Compliance
Trans. w/lt. 9-13-60

	14	
	13	
	12	
	11	
	10	
	9	
AR	8	ANGLE IRON 1/8 X 1 1/2 LG.
AR	7	POLYETHYLENE HIGH DENSITY 1" THICK
4	6	HANDLE CHEST # H20T5 SIZE 4 M ^C MASTER-CARR SUPPLY CO.
8	5	BOX LOCK # 15642 SC CORBIN
AR	4	CADIMUM .020 THICK SHEET
AR	3	POLYETHYLENE HIGH DENSITY 1/2" THICK
AR	1	PLYWOOD 1" THICK

G-2 QUANTITY	G-1 ITEM NO.	DRAWING NO.	DESCRIPTION	PROJECT NO.	USED ON ASS'Y
TOLERANCES UNLESS OTHERWISE SPECIFIED					
DECIMAL	± .005	APPROVED		DATE	FINISH & SPECIFICATION
FRACTIONAL	± 1/64"	DRAWN <i>[Signature]</i>		8/2/60	MATERIAL & SPECIFICATION
ANGULAR	± 1/2°	CHECKED <i>[Signature]</i>			
BREAK ALL SHARP EDGES					
REMOVE ALL BURRS					
ENGELHARD INDUSTRIES, INC. D. E. MAKEPEACE DIVISION ATTLEBORO, MASS.				SCALE	SIZE
					DRAWING NO.
					50084
					REV.

D-02