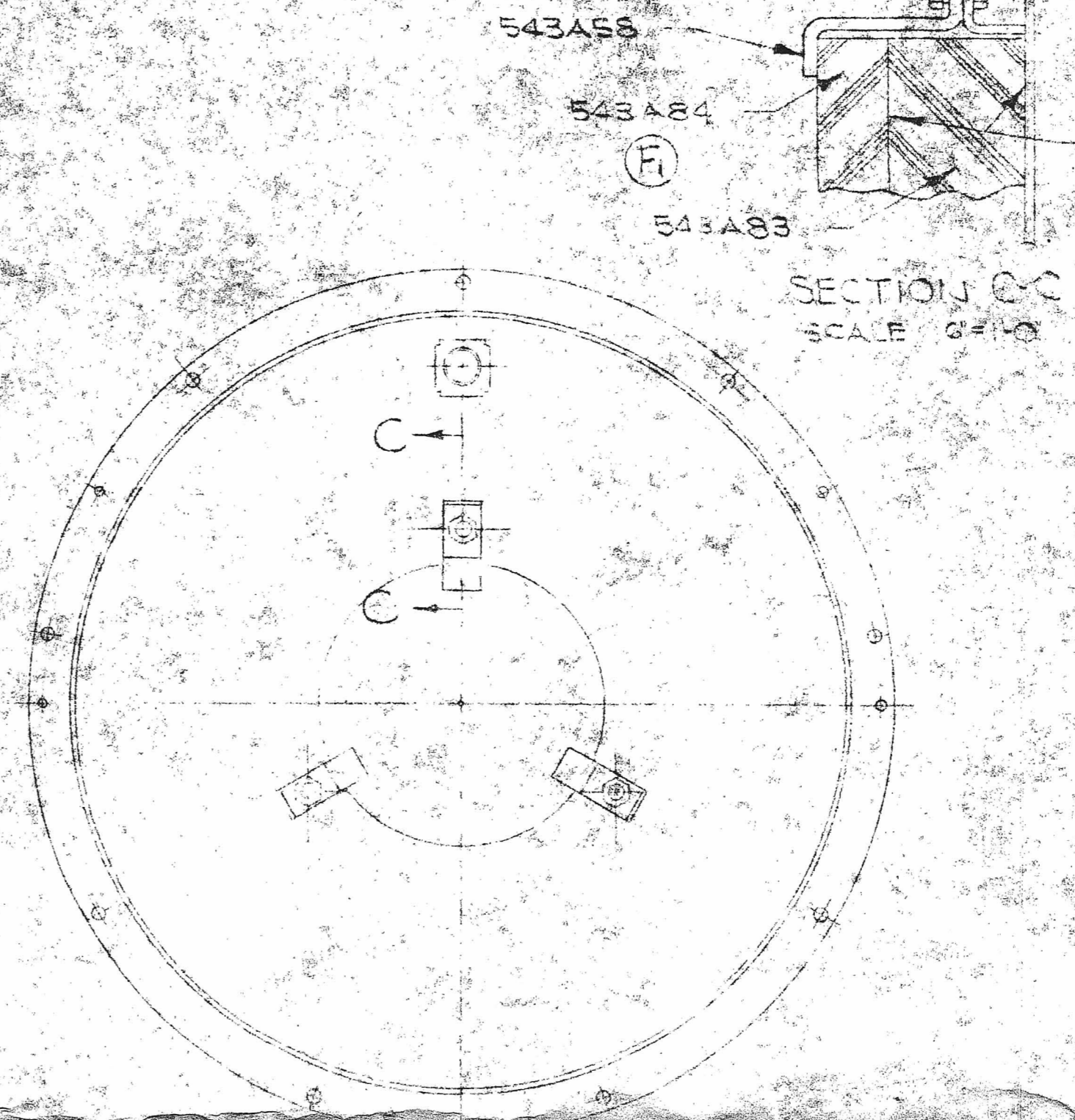
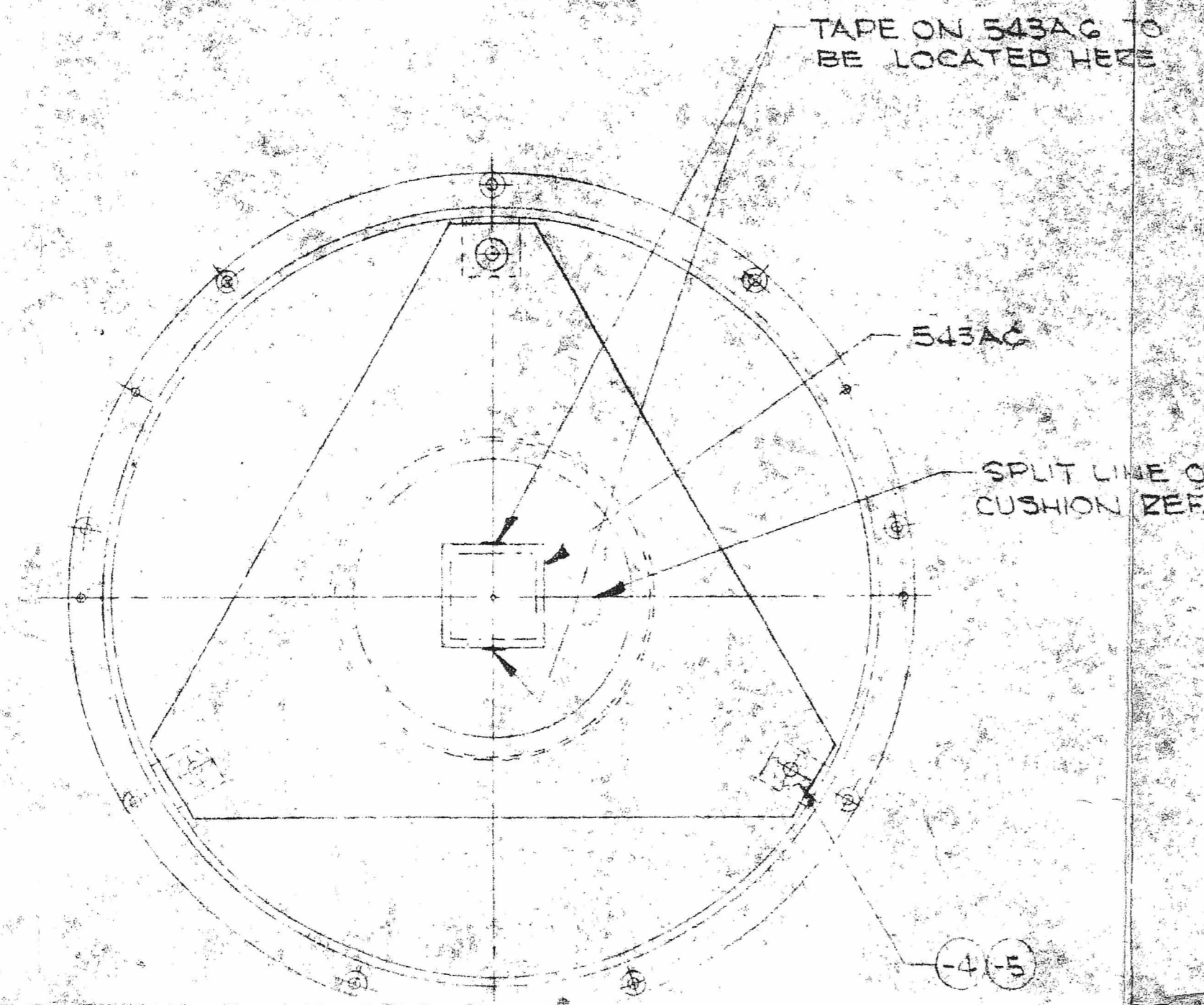


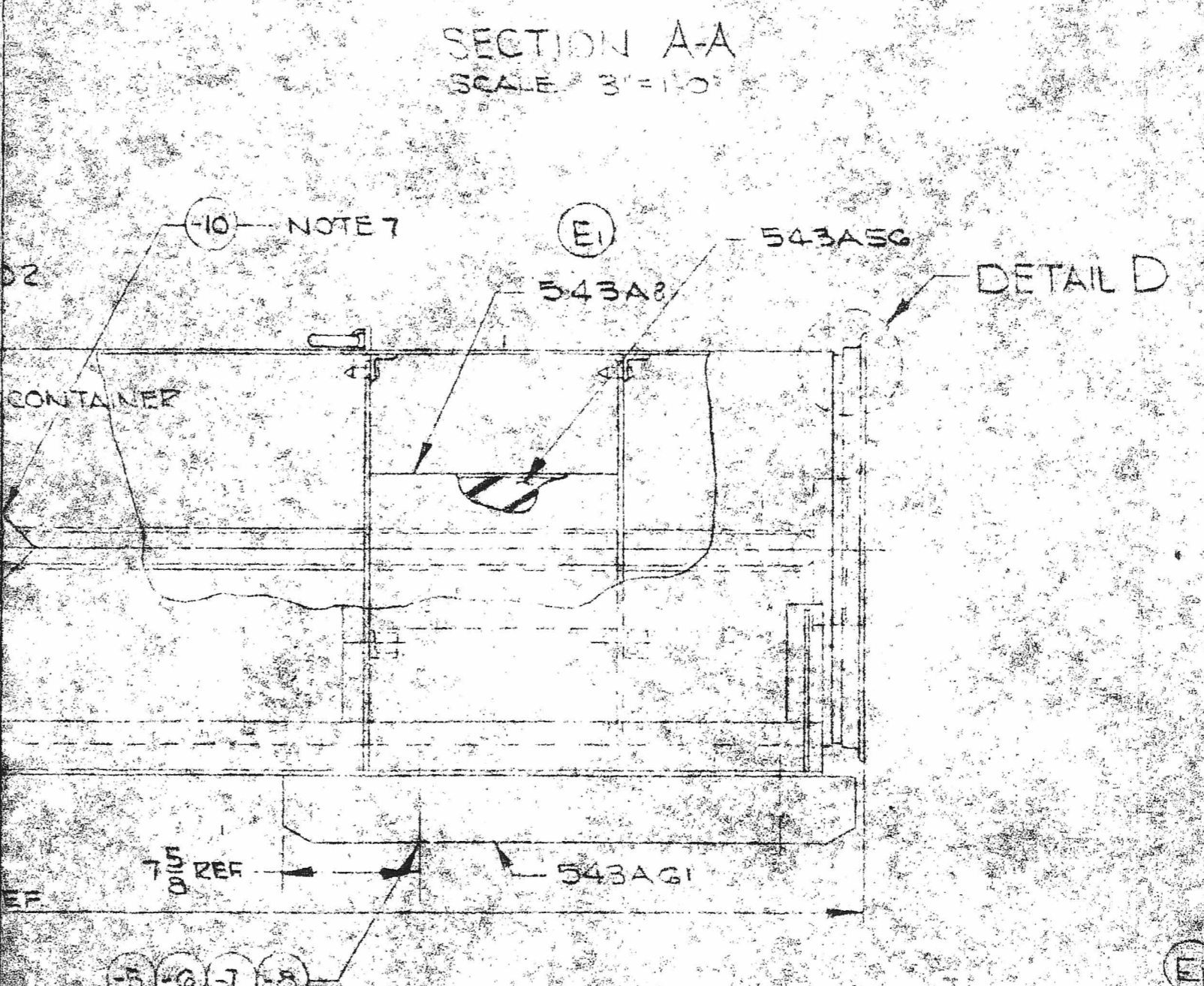
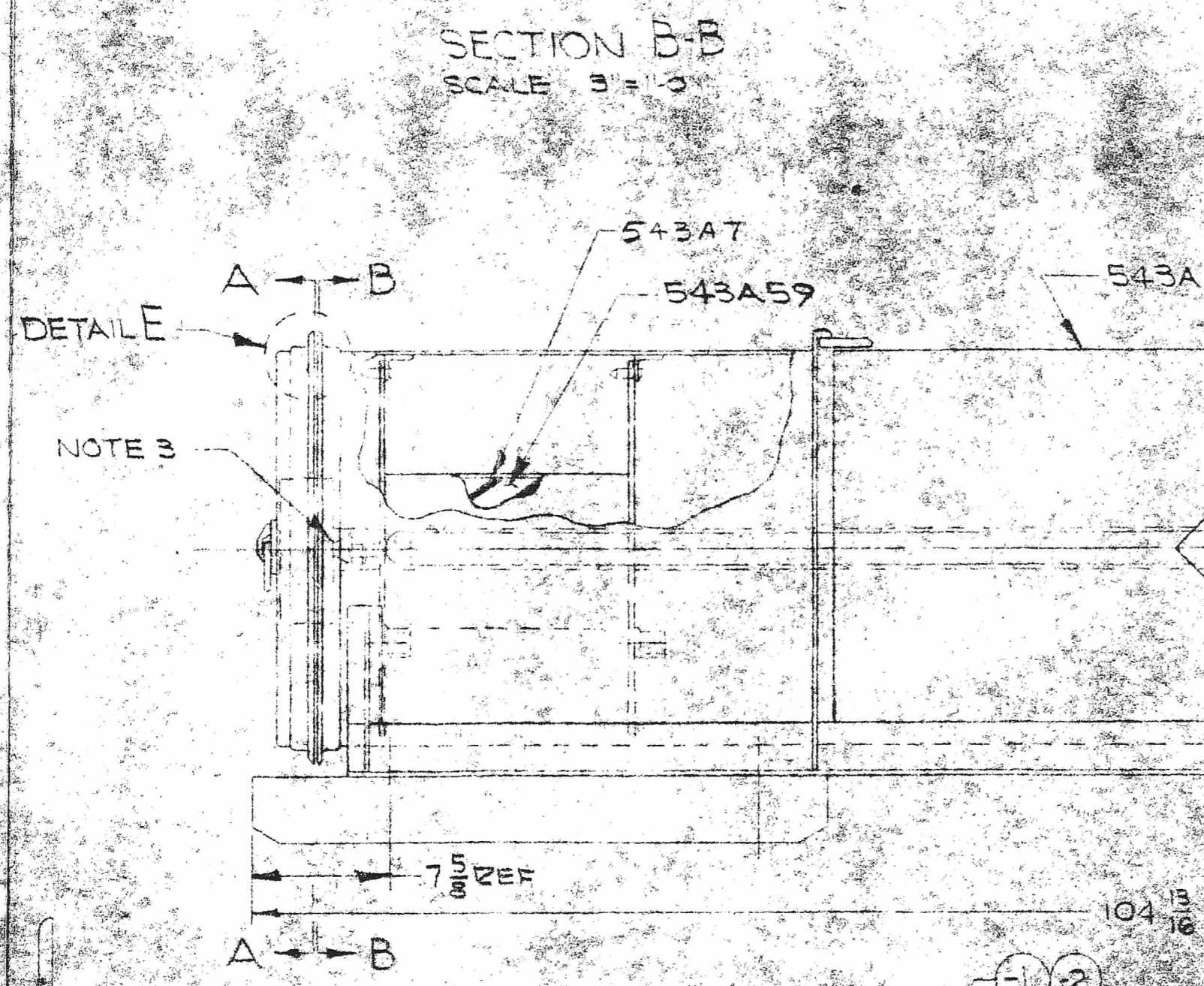
**NOTE**

1. CEMENT PER SHOP SP1003A
2. PRESSURE TEST TO 5 PSIG
3. CLOSE BAG 543AG BY FOLDING FLAP
4. LOCKWIRE TO BE SUPPLIED & INSTALLED BY CUSTOMER
5. STENCIL PER DRAWING 543A99
6. SPIGGA APPLIES
7. ADD LABEL TO FOUR SIDES OF THE CONTAINER EACH TIME A CORE SHIPMENT IS MADE REMOVE OR DESTROY WHEN CONTAINER IS SHIPPED WITHOUT CORE.

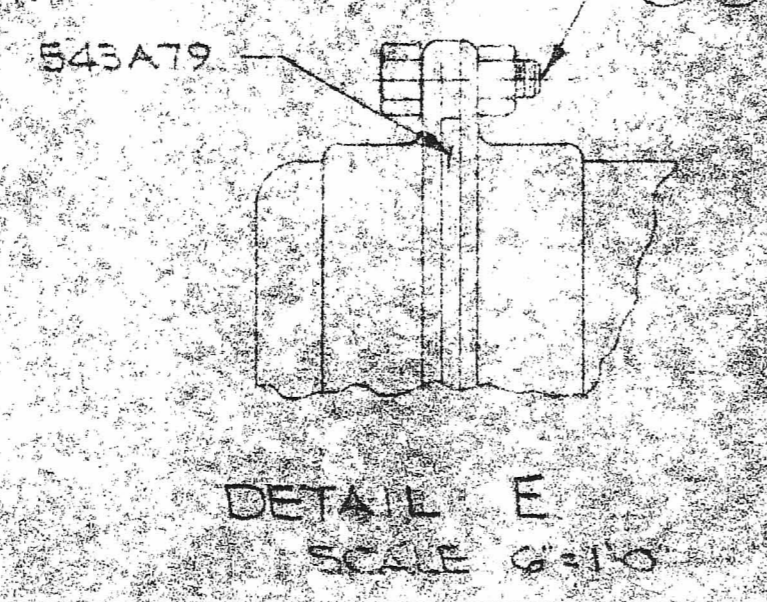
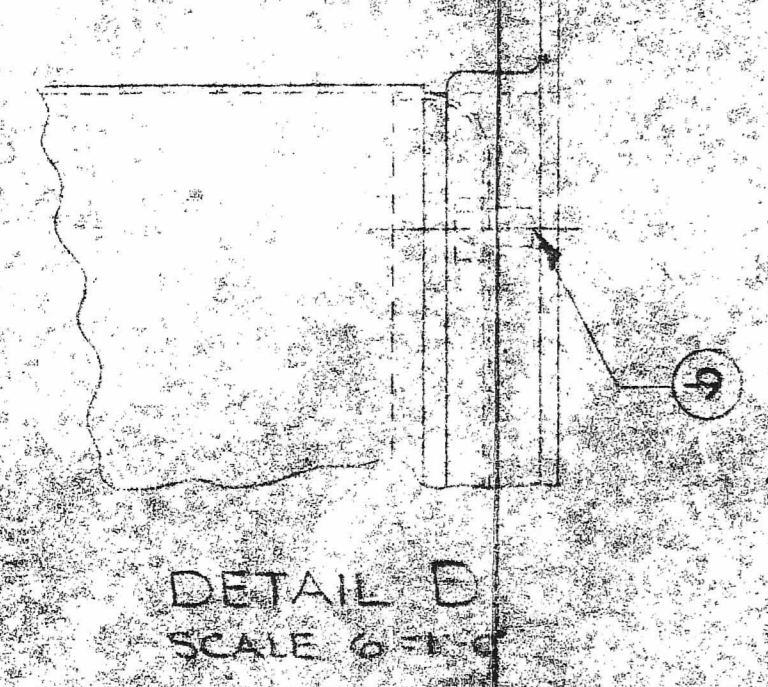
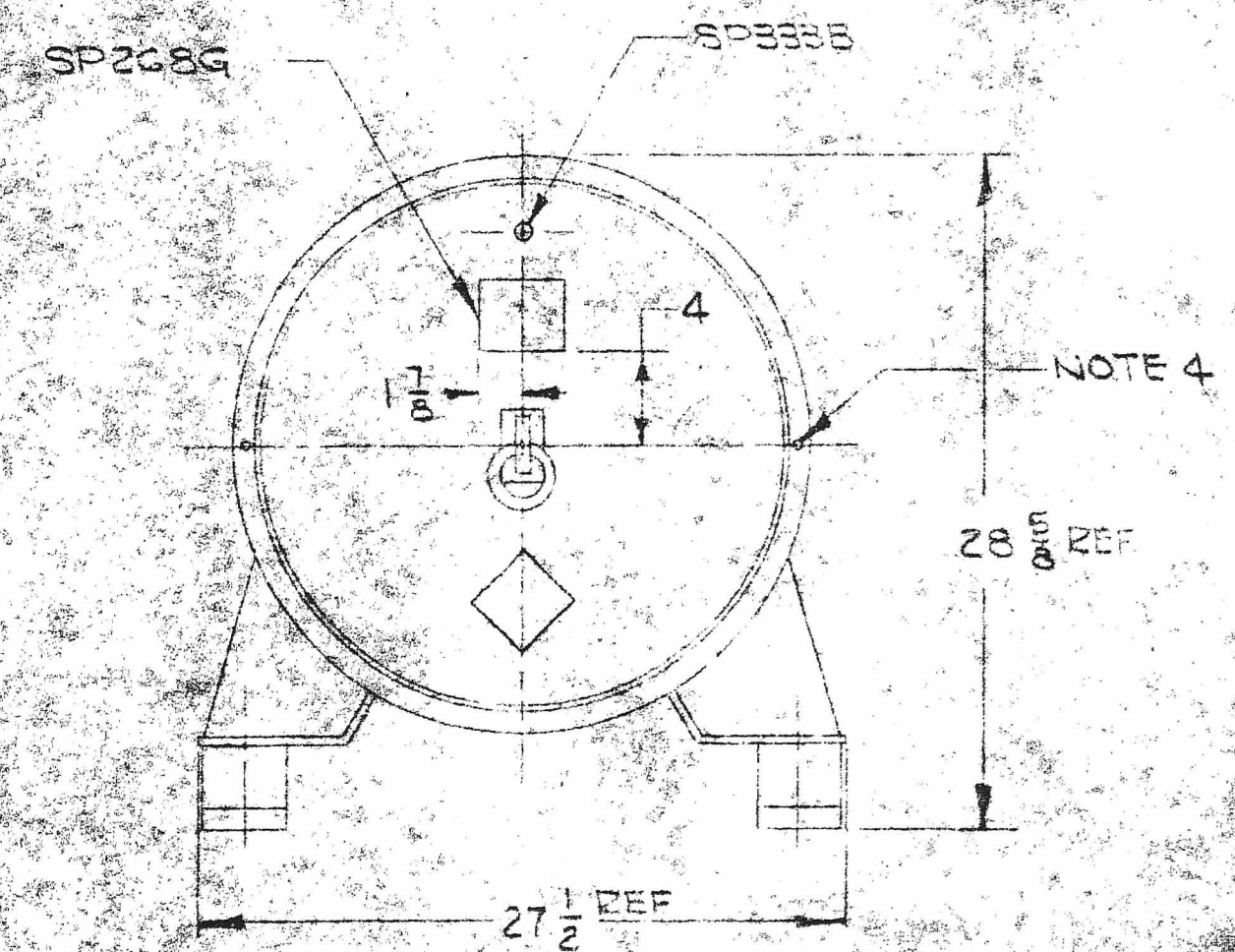
| REVISIONS |   |         |          |
|-----------|---|---------|----------|
| SYM       | DESCRIPTION                               | DATE    | APPROVAL |
| D         | UNDRAWN & REVISED                         | 2-23-59 | REGL     |
| E         | ADDED 543A83, 543A71<br>1 REQD WAS 2 REQD | 3-1-59  | EGM      |
| F         | 543A83 WAS 543A78<br>543A78 WAS 543A84    | 4-2-59  | BN       |



|                            |     |  |  |  |  |
|----------------------------|-----|--|--|--|--|
| 4<br>(NOTE 7)              | -10 | LABEL- RADIOACTIVE MATERIAL FOR GROUP I OR II PER PARAGRAPH 73.44 SECTION 2 IN ACCORDANCE WITH I.C.C. REGULATIONS, TARIFF NO. 10 ISSUED MAY 18, 1957 |  |  |  |
| CUSTOMER SUPPLIED MATERIAL |     |  |  |  |  |



| QTY | DESCRIPTION | MATERIAL  | UNIT                            |
|-----|-------------|---|---------------------------------|
| 1   | 9           | 1/8 SO HD PIPE PLUG<br>CRANE CO. MICHIGAN<br>AVE CHICAGO, ILL. OR EQUIV | CAD PLATED<br>STL<br>COMMERCIAL |
| 8   | 8           | 1/2 WROUGHT WASHER  | STL<br>SPIGGA                   |
| 8   | 7           | 1/2-13 FIN HEX HD CAP SCE   | STL<br>SPIGGA                   |
| 8   | 6           | 1/2-13 1/4 HEX HD CAP SCE   | STL<br>SPIGGA                   |
| 16  | 5           | 1/2 MED LOCK WASHER   | STL<br>SPIGGA                   |
| 8   | 4           | 1/2-20 FIN. HEX NUT   | STL<br>SPIGGA                   |
| 6   | 3           | 3/8 MED LOCK WASHER   | STL<br>SPIGGA                   |
| 16  | 2           | 3/8-24 FIN. HEX NUT   | STL<br>SPIGGA                   |
| 9   | 1           | 3/8-24 HEX HD CAP SCE   | STL<br>SPIGGA                   |



For Div of Compliance  
DUCKET NO. 71-139  
543A

| QTY | DESCRIPTION | MATERIAL                            | UNIT |
|-----|-------------|-------------------------------------|------|
| 1   | 543A8       | TUNNEL ASSY                         |      |
| 1   | SP333B      | HUMIDITY INDICATOR                  |      |
| 1   | SP268G      | NAMED PLATE DECAL                   |      |
| 1   | 543A402     | CONTAINER ASSY                      |      |
| 1   | 543A99      | STENCILING REFERENCE PRINT          |      |
| 2   | 543A59      | CUSHION                             |      |
| 2   | 543A84      | TAPE NOT TO BE USED FOR FABRICATION |      |
| 2   | 543A83      | CUSHIONING INSPECTION ESTIMATE      |      |
| 1   | 543A79      | GASKET ING. ORDERING OF MATERIAL    |      |
| 2   | 543AG1      | SKID                                |      |
| 6   | 543A58      | STEAP OR FABRICATION OF TOOLS       |      |
| 2   | 543A56      | QUESTION OR FIXTURES                |      |
| 1   | 543A7       | TUNNEL ASSY                         |      |
| 1   | 543AG       | BAG ASSY                            |      |

| UNLESS OTHERWISE SPECIFIED              |  | DATE                |
|---|--|---------------------|
| DIMENSIONS ARE IN INCHES                |  | 10-2-59             |
| TOLERANCES ON FRACTIONS DECIMALS ANGLES |  | GEN CHK 2.1.10.5.59 |
| MATERIAL                                |  | STRESS              |
| FUNCTION                                |  | MATERIAL            |
| APPROVED                                |  | APPROVED            |
| APPLICATION                             |  |                     |

|  |  |
|--|--|
| CONTAINER FOR PIN TYPE CORE FOR POWER REACTOR DEVELOPMENT CO | Applied Design COMPANY<br>BUFFALO, N. Y. |
| SCALE 1/2"=1'-0" WT. G/LC                                    | DWG NO. 543A                             |
|  | SHEET 02                                 |