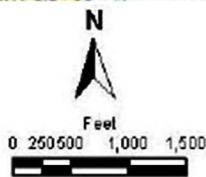


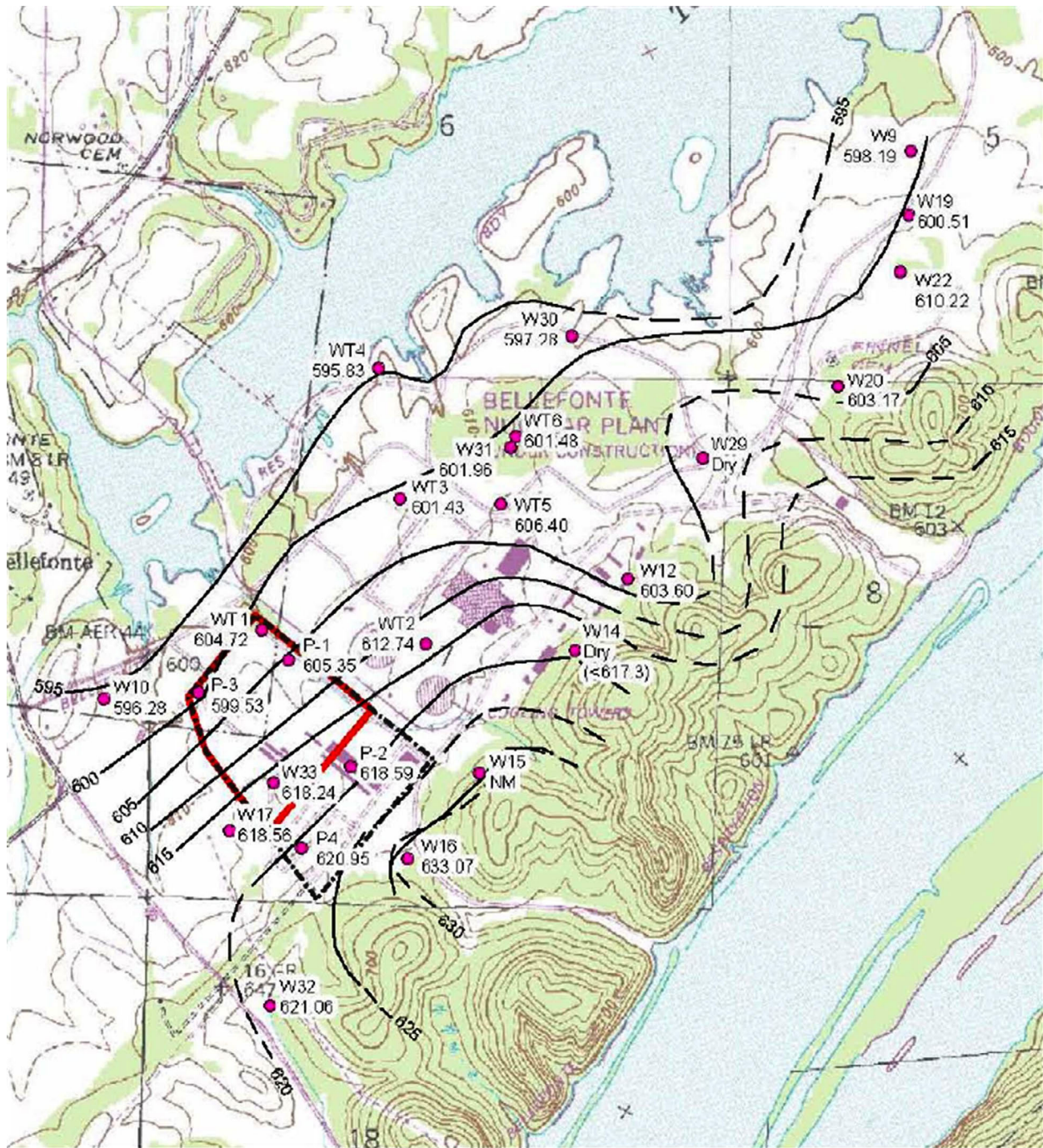
- Legend:**
- Monitoring Wells
 - ▭ Investigation area for 2005 geotechnical study
 - March Potentiometric Contour



Elevations in Feet MSL

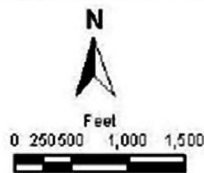
Note: The March 2005 reading from Well W29 is considered an anomalous reading, and the water level and interpretation of the groundwater elevations in the vicinity of Well W29 depicted in this figure are not considered in current groundwater evaluations.

FIGURE 2.3-23 (Sheet 1 of 4)
March 2005 Potentiometric Surface Map



Legend:

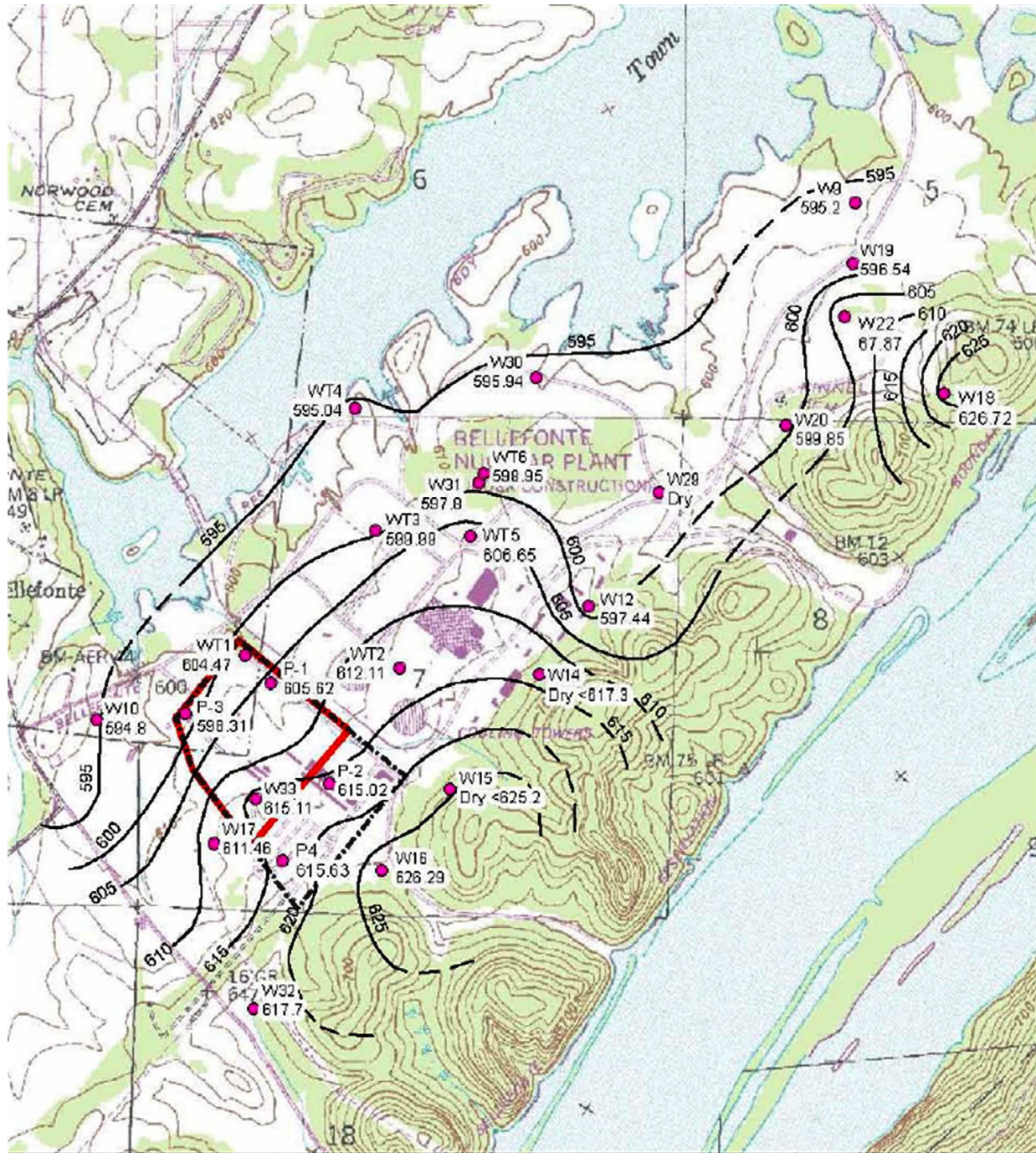
- Monitoring Wells
- Investigation area for 2005 geotechnical study
- May Potentiometric Contour


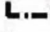


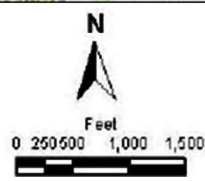
Elevations in Feet MSL

Note: The March 2005 reading from Well W29 is considered an anomalous reading, and the water level and interpretation of the groundwater elevations in the vicinity of Well W29 depicted in this figure are not considered in current groundwater evaluations.

**FIGURE 2.3-23 (Sheet 2 of 4)
 May 2005 Potentiometric Surface Map**

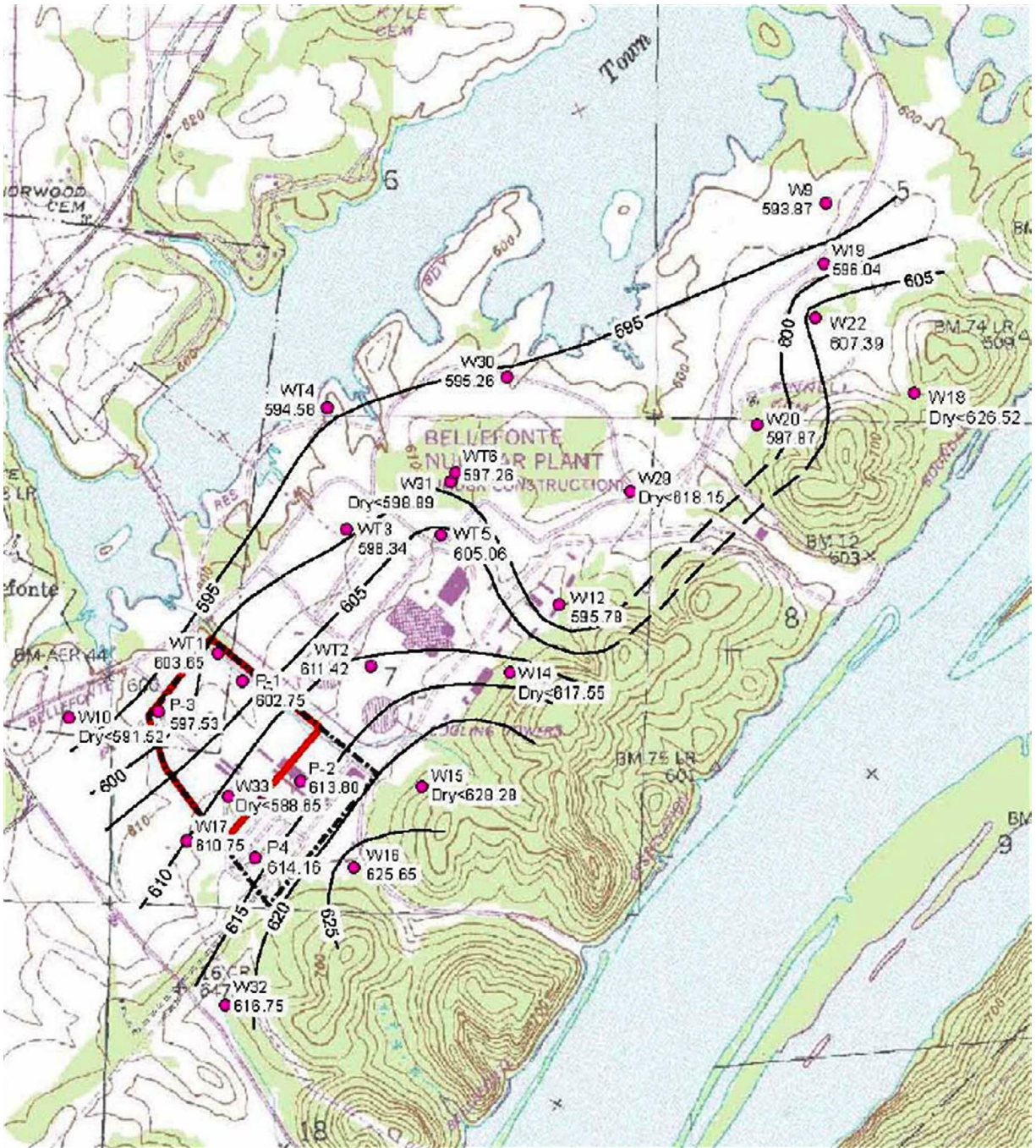


Legend:
 ● Monitoring Wells
 Investigation area for 2005 geotechnical study
 July Potentiometric Contour

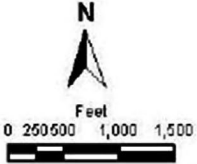


Elevations in Feet MSL

**FIGURE 2.3-23 (Sheet 3 of 4)
 July 2005 Potentiometric Surface Map**



Legend:
 ● Monitoring Wells
 [Red Outline] Investigation area for 2005 geotechnical study
 [Dashed Line] September Potentiometric Contour



Elevations in Feet MSL

FIGURE 2.3-23 (Sheet 4 of 4)
September 2005 Potentiometric Surface Map