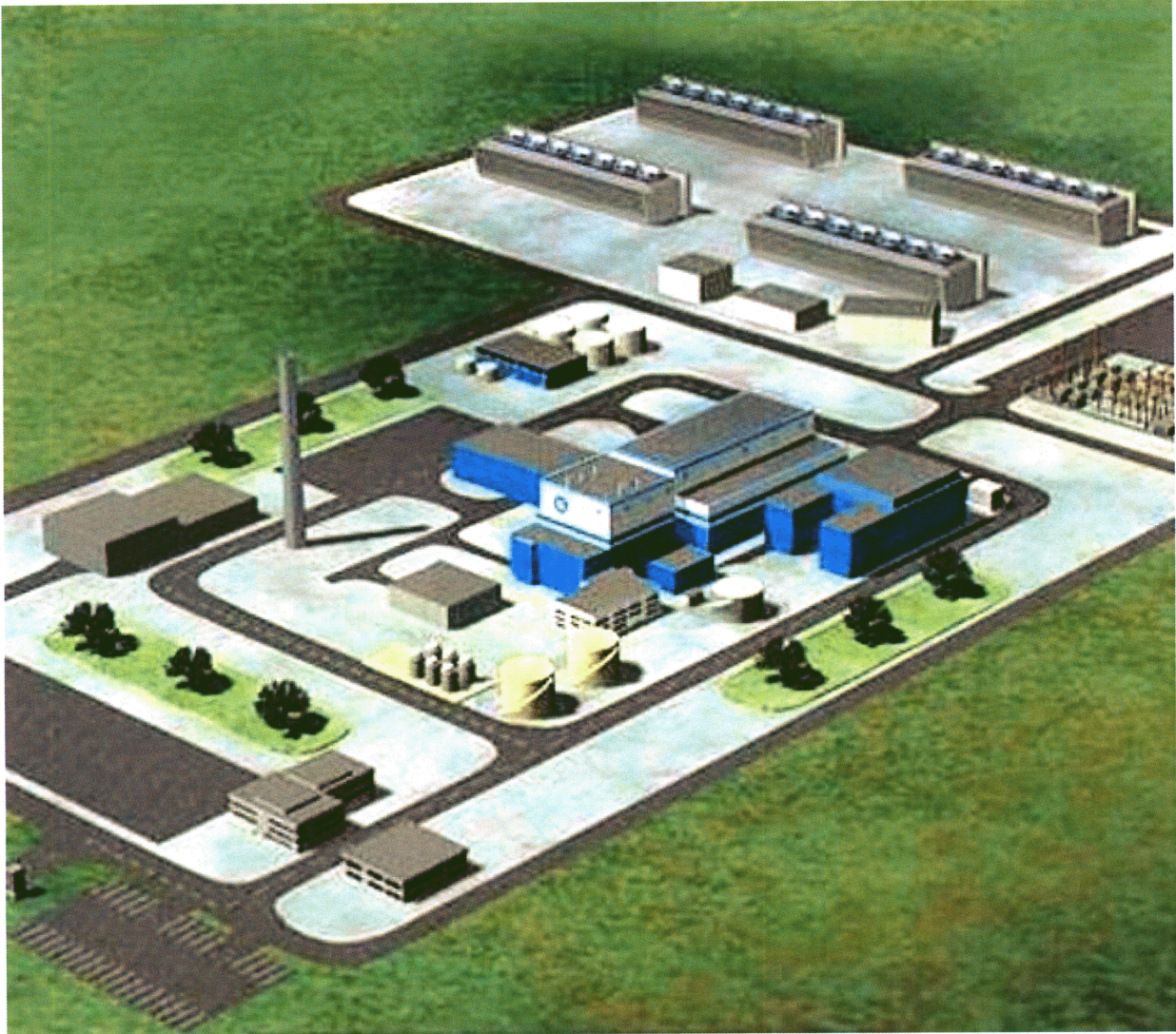


**River Bend Station, Unit 3  
COL Application  
Part 3, Environmental Report**



**Figure 3.1-1. Artist's Rendition of Single-Unit ESBWR**

**Revision 0**

**River Bend Station, Unit 3  
COL Application  
Part 3, Environmental Report**



**Figure 3.1-2. Looking North from the Heavy Haul Road**

**Revision 0**

River Bend Station, Unit 3  
COL Application  
Part 3, Environmental Report



Figure 3.1-3. River Bend Station Units 1 and 3

River Bend Station, Unit 3  
COL Application  
Part 3, Environmental Report

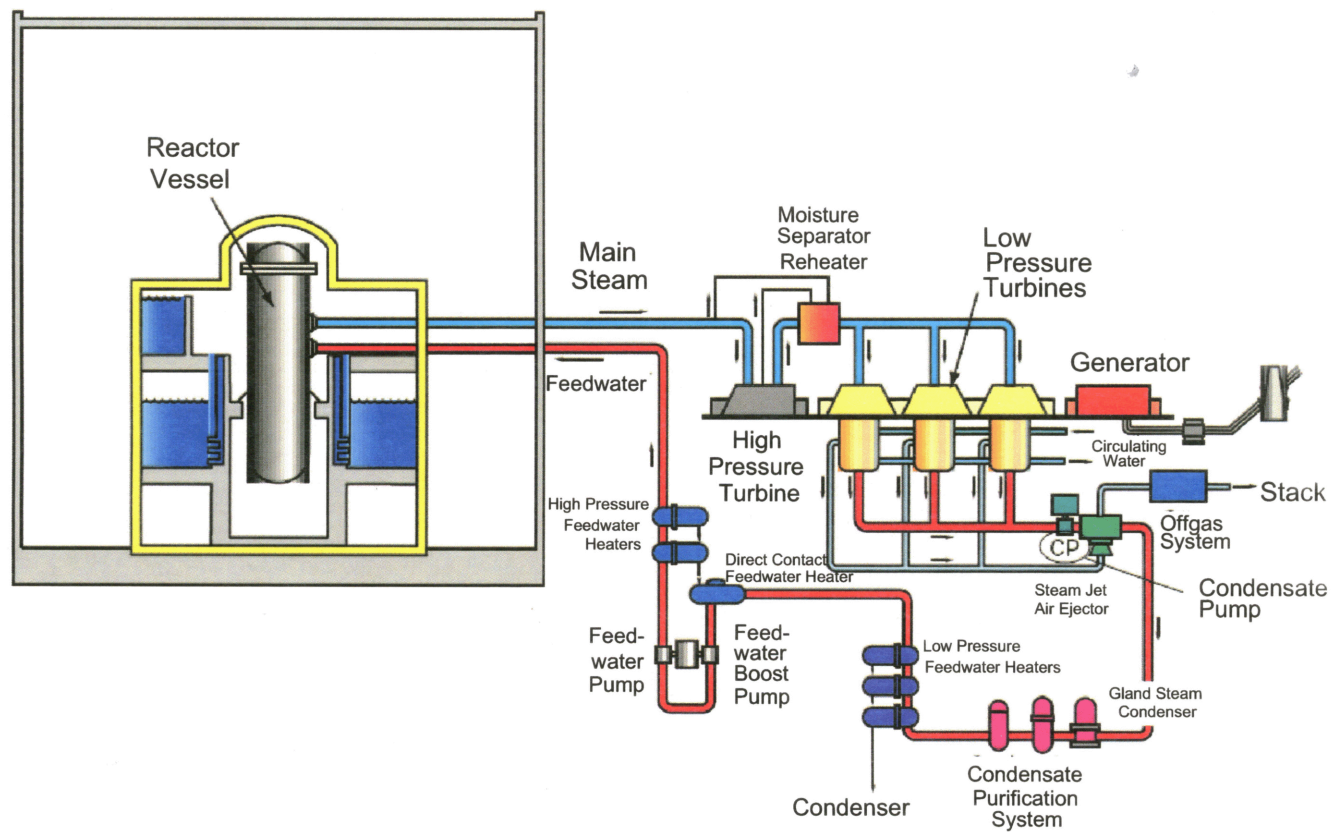


Figure 3.2-1. Simplified Flow Diagram of  
Reactor Power Conversion System

Revision 0

River Bend Station, Unit 3  
COL Application  
Part 3, Environmental Report

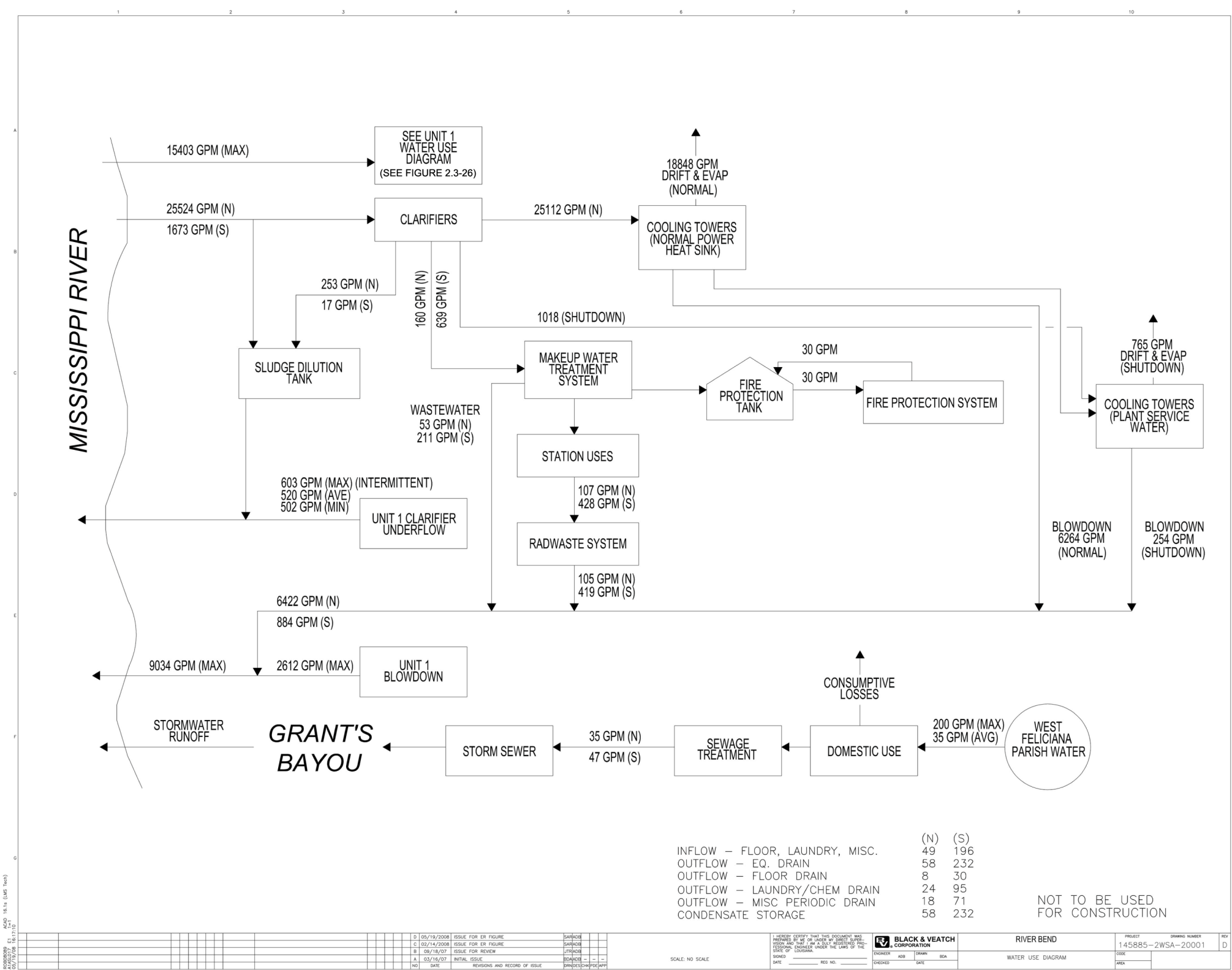


Figure 3.3-1. Plant Water Use Diagram

# River Bend Station, Unit 3 COL Application Part 3, Environmental Report

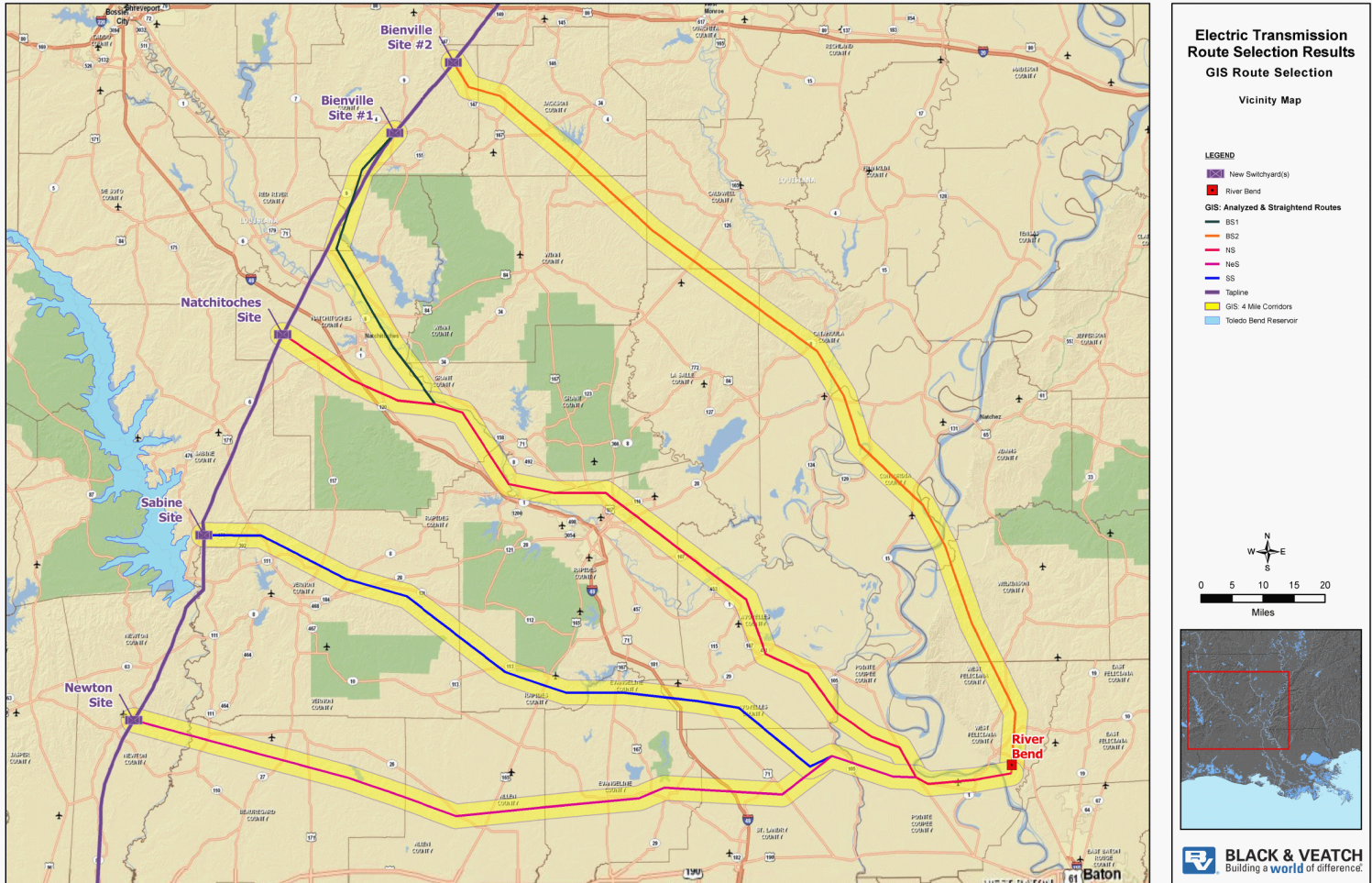
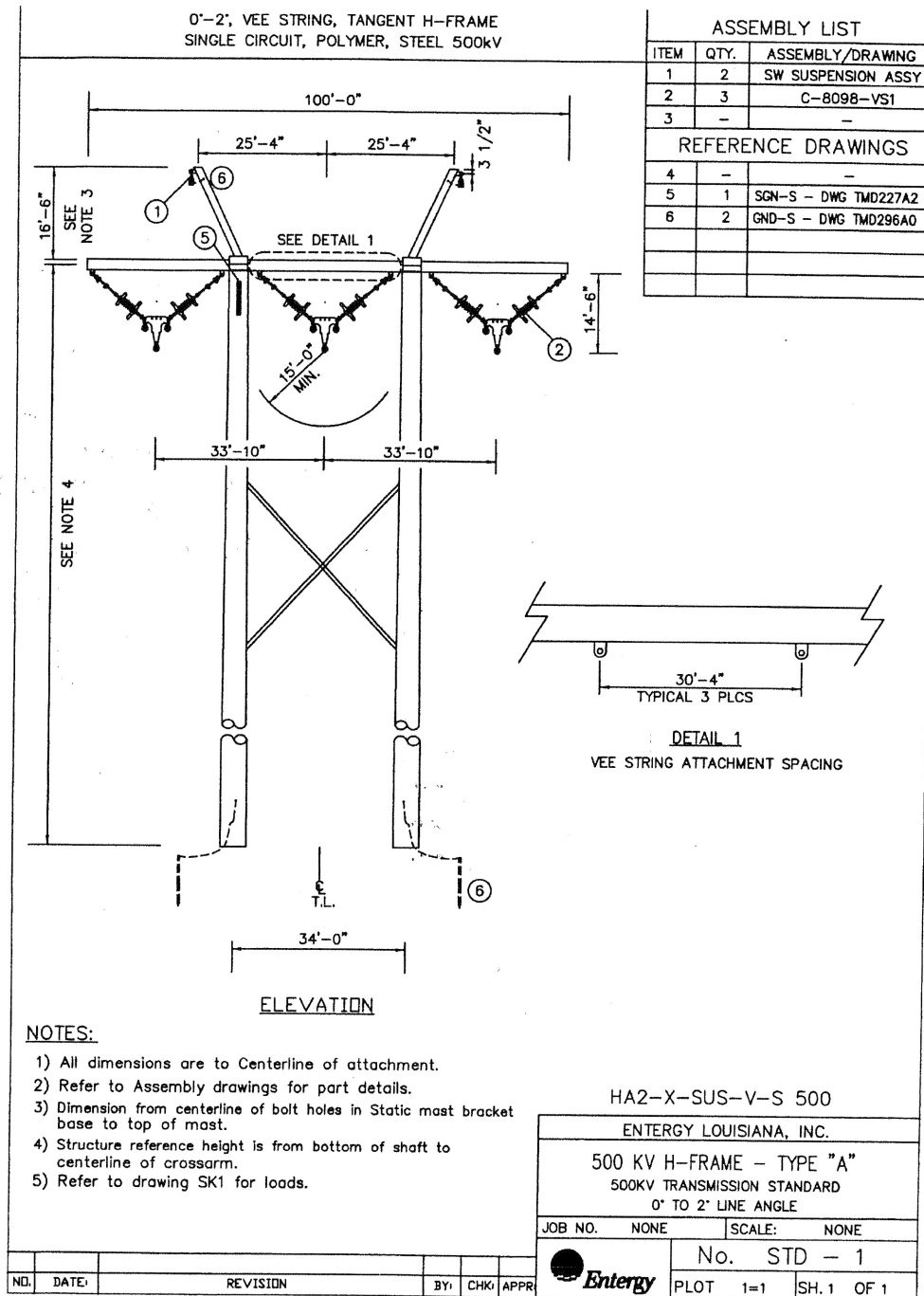


Figure 3.7-1. GIS Route Selection Vicinity Map

Revision 0

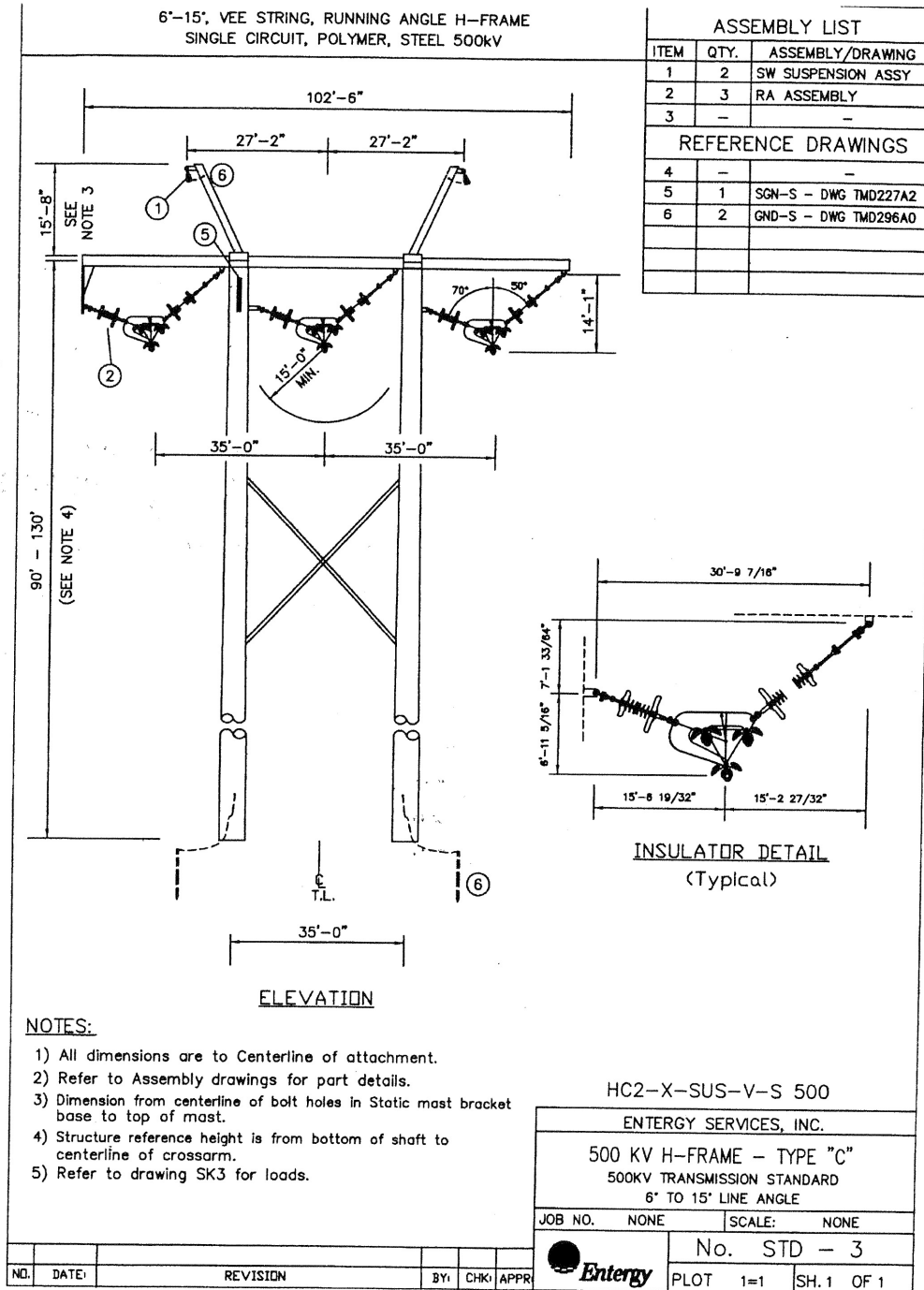
**River Bend Station, Unit 3**  
**COL Application**  
**Part 3, Environmental Report**



**Figure 3.7-2. Typical 500 kV Transmission  
 Line Tower (Sheet 1 of 4)**

**Revision 0**

**River Bend Station, Unit 3  
COL Application  
Part 3, Environmental Report**



**Figure 3.7-2. Typical 500 kV Transmission Line Tower (Sheet 2 of 4)**

## Revision 0

# River Bend Station, Unit 3 COL Application Part 3, Environmental Report

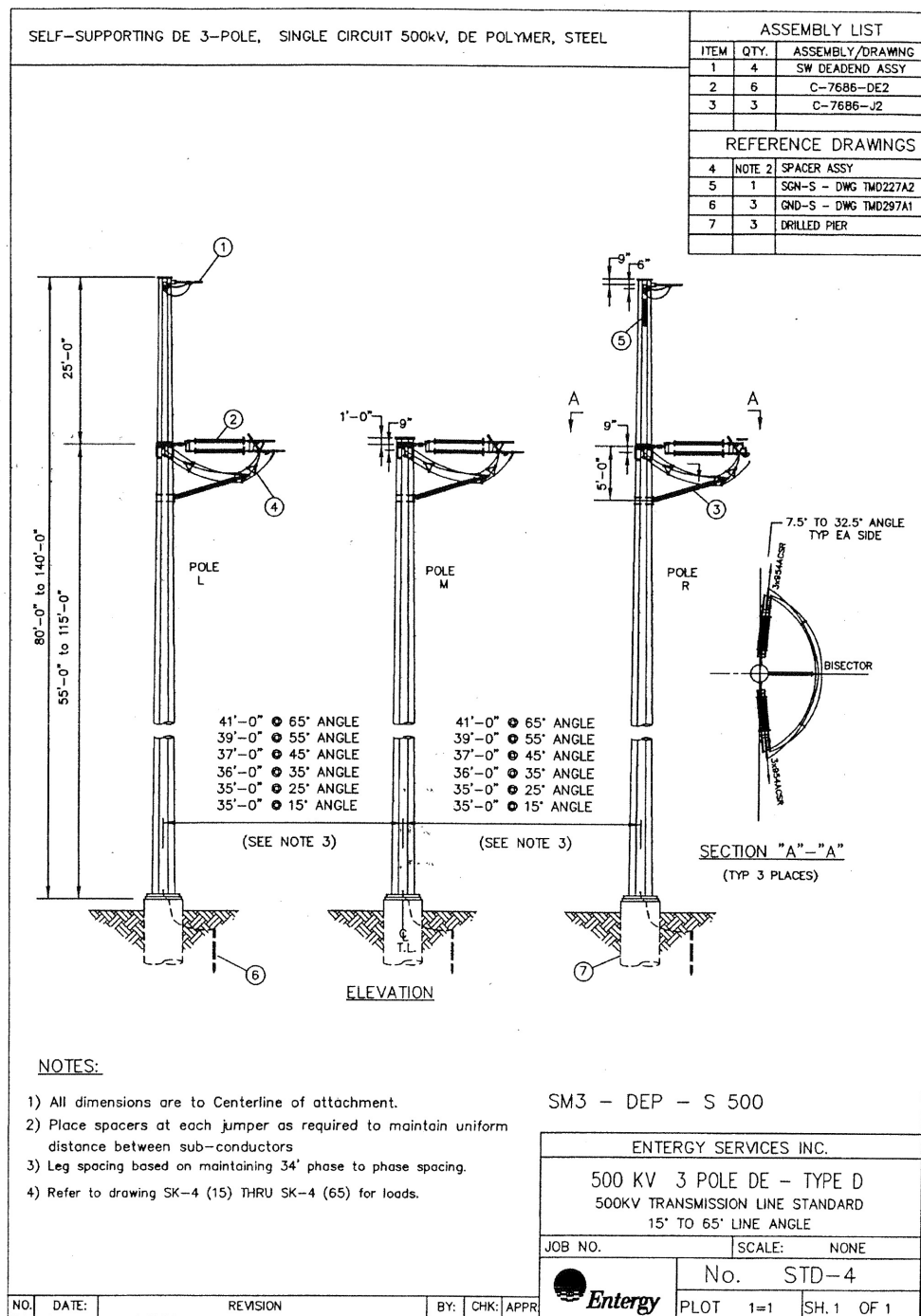
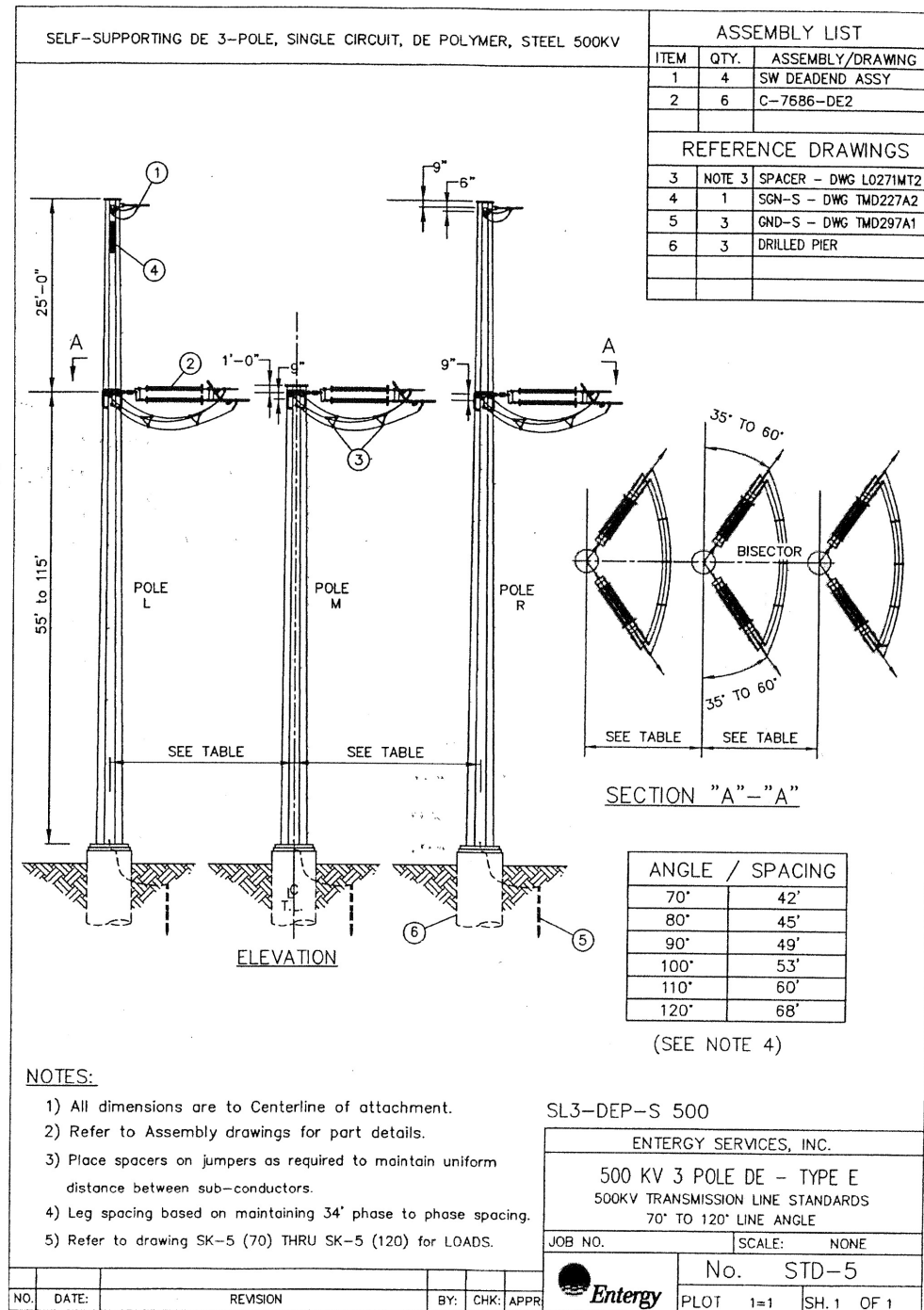


Figure 3.7-2. Typical 500 kV Transmission  
Line Tower (Sheet 3 of 4)

Revision 0

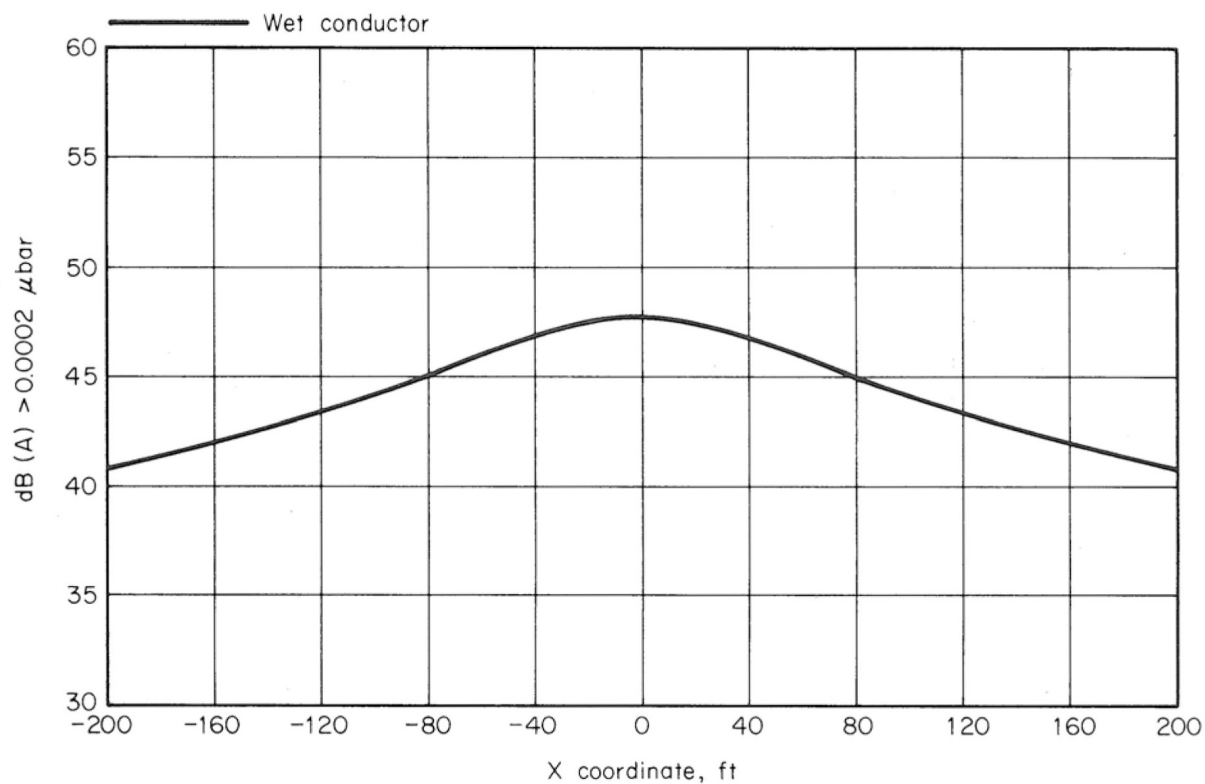
**River Bend Station, Unit 3  
COL Application  
Part 3, Environmental Report**



**Figure 3.7-2. Typical 500 kV Transmission  
Line Tower (Sheet 4 of 4)**

**Revision 0**

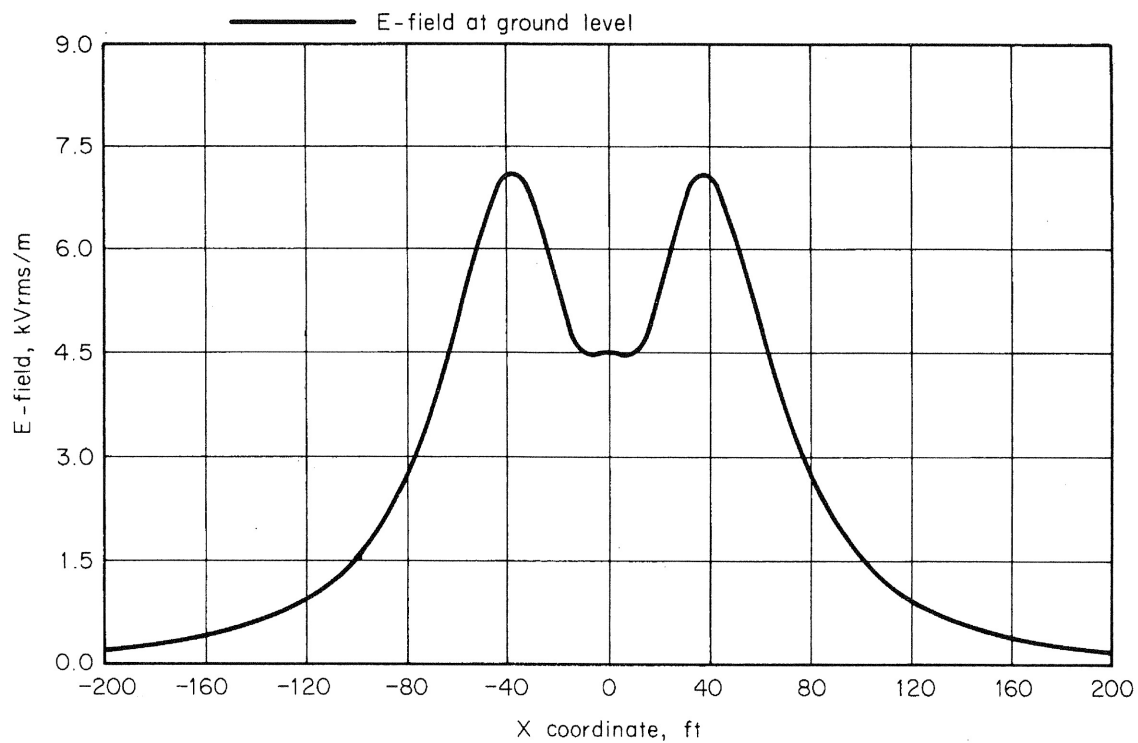
**River Bend Station, Unit 3  
COL Application  
Part 3, Environmental Report**



**Figure 3.7-3. 500 kV Transmission Line  
Audible Noise Profile**

**Revision 0**

**River Bend Station, Unit 3  
COL Application  
Part 3, Environmental Report**



**Figure 3.7-4. 500 kV Transmission Line  
Electric Field Profile**

**Revision 0**