



Vogtle Site Tour Homeland Security

October 1, 2008



Agenda

- 9:00 am: Introduction
 - Safety
 - Introductions and Meeting Briefing
 - Homeland Security
 - AP 1000 Overview
 - Site Overview
- 10:00 am – 12:00: Site Tour
 - Onsite Tour (Owner Controlled Area, New Intake Structure, etc.)
 - Offsite Tour (Public Roads, Boat Launches, etc.)
- 12:00 pm: Lunch
- 1:00 pm: Ending Discussions



Site Tour - Remember Safety!



•Vehicle Safety

- Wear safety belts
- Drive cautiously

•Tripping Hazards

- Watch your step loading and unloading
- Use caution when walking on uneven terrain
- Do not walk on rip-rap

•PPE (hard hats, safety glasses, ear protection as required)

- Required inside designated areas (Intake Structure)
- SNC will provide all necessary PPE

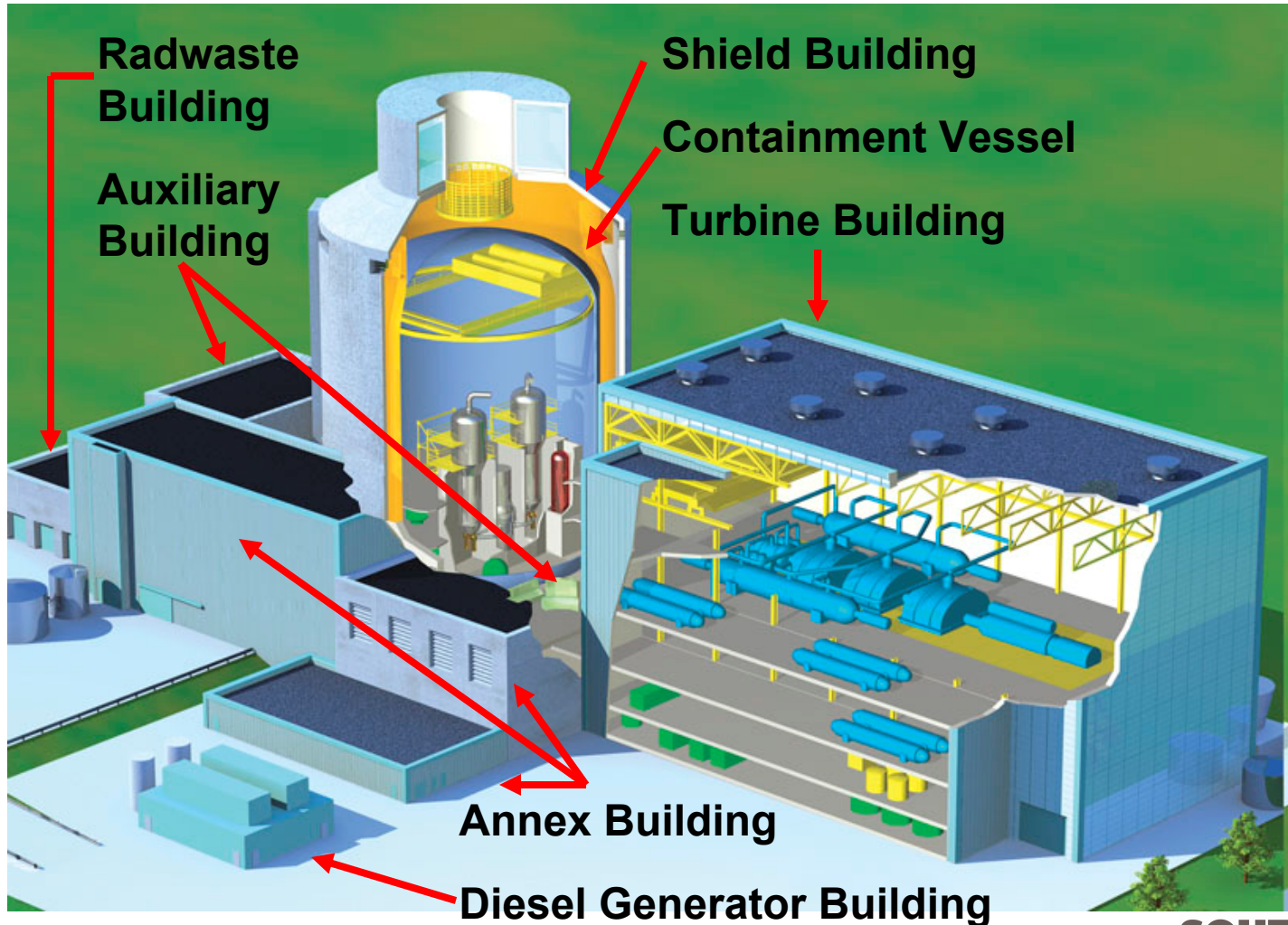


Introductions and Meeting Briefing

- Introduction
- Meeting Briefing
 - Department of Homeland Security



Basic Plant Design – AP1000 Standard Plant

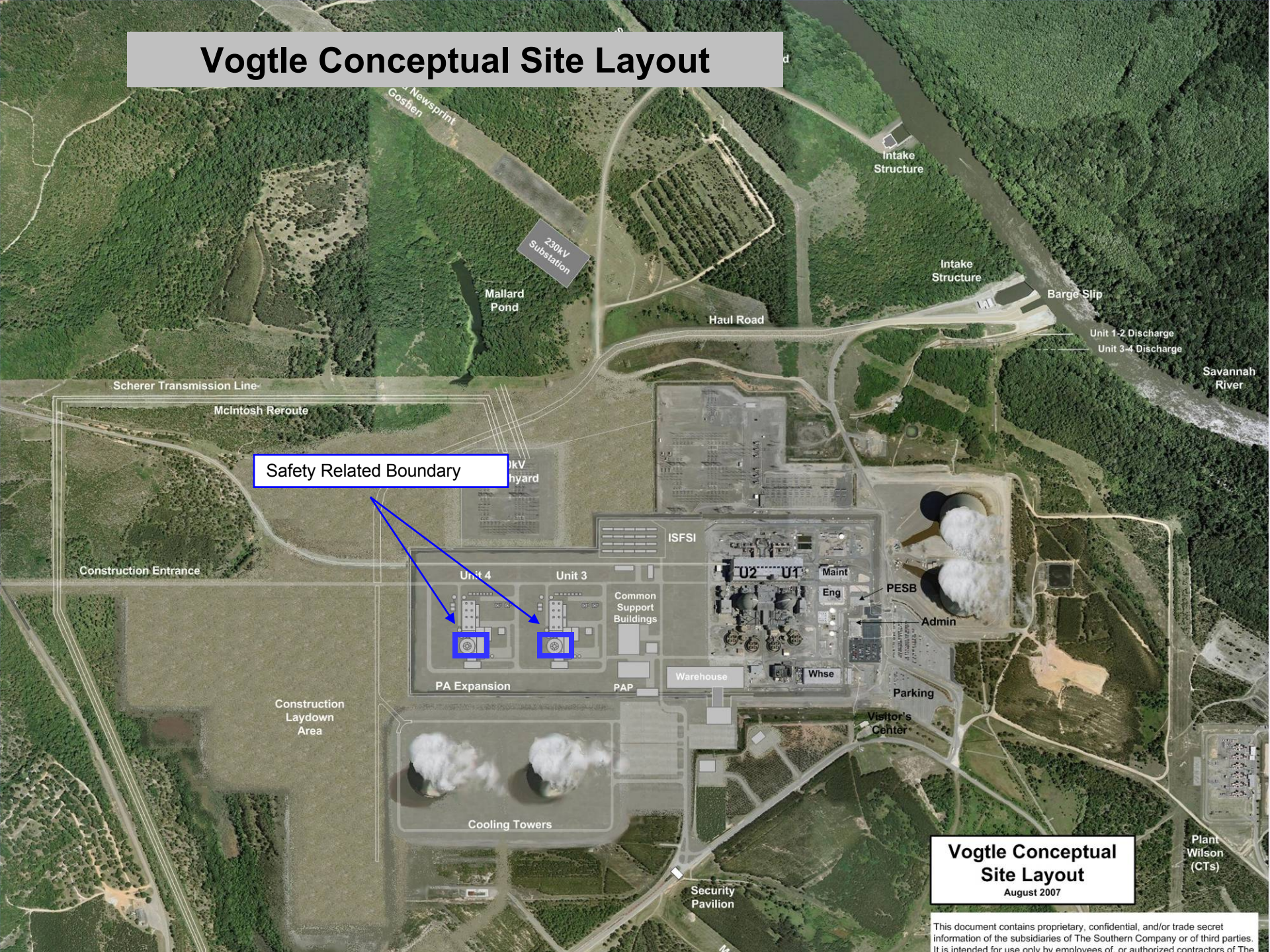




Basic Plant Design – AP1000 Standard Plant Simplified

- ▲ Simplified safety-related systems
 - Safe shutdown systems rely on natural forces and stored energy
 - Gravity
 - Natural circulation
 - Convective heat transfer
 - Batteries
 - Pressurized fluids
 - Safe shutdown systems initiated by one-time actuation of valves
 - Reduced number of components and commodities
 - No safety-related AC power (Offsite)
 - No safety-related pumps
 - No safety-related diesels
 - No safety-related HVAC

Vogtle Conceptual Site Layout



Safety Related Boundary

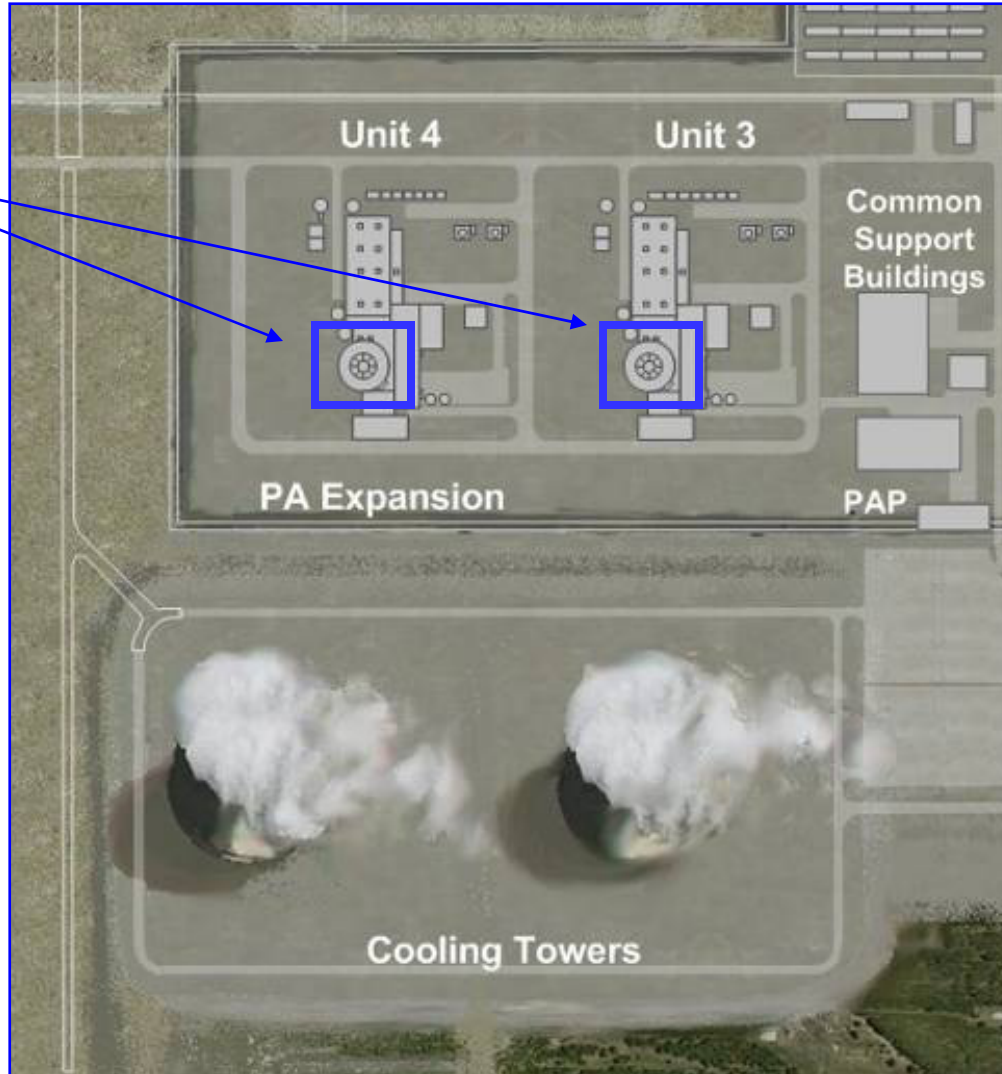
Vogtle Conceptual Site Layout
August 2007

This document contains proprietary, confidential, and/or trade secret information of the subsidiaries of The Southern Company or of third parties. It is intended for use only by employees of, or authorized contractors of The



Basic Plant Design – AP1000 Standard Plant Simplified

Safety Related Boundary

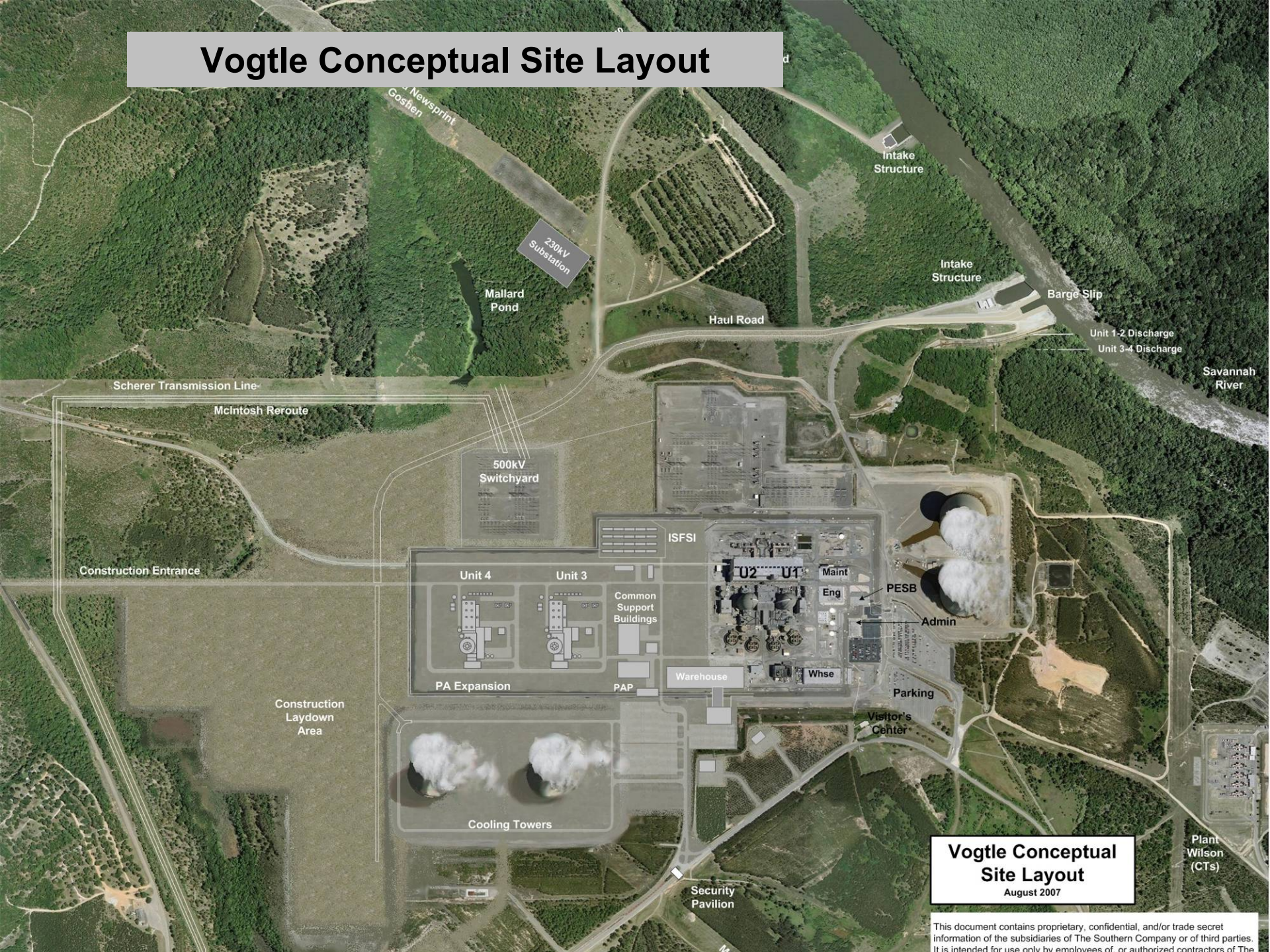




Site Overview

- Site Characteristics
 - Site Layout
 - Sources of Cooling Water

Vogtle Conceptual Site Layout

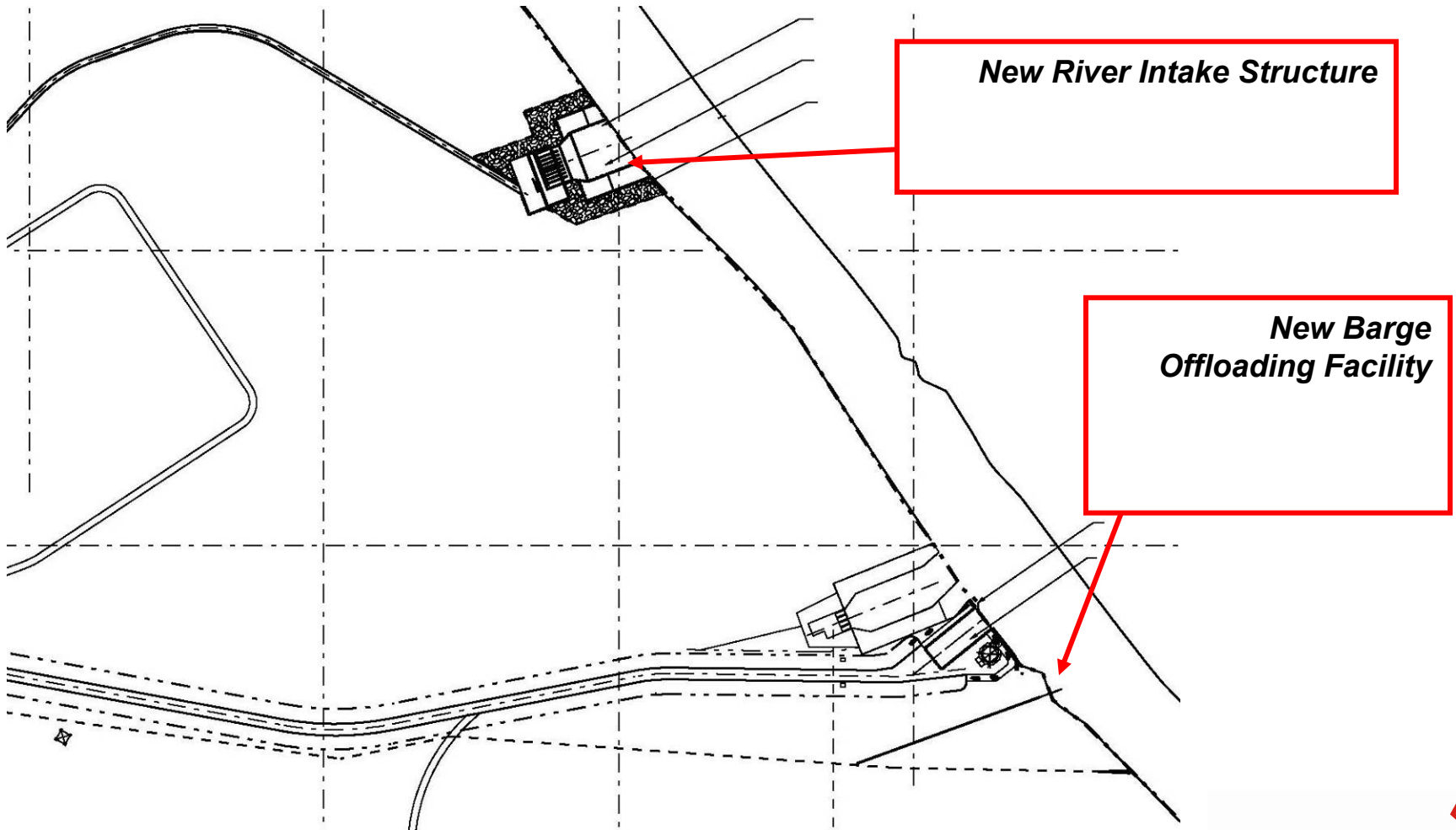


Vogtle Conceptual Site Layout
August 2007

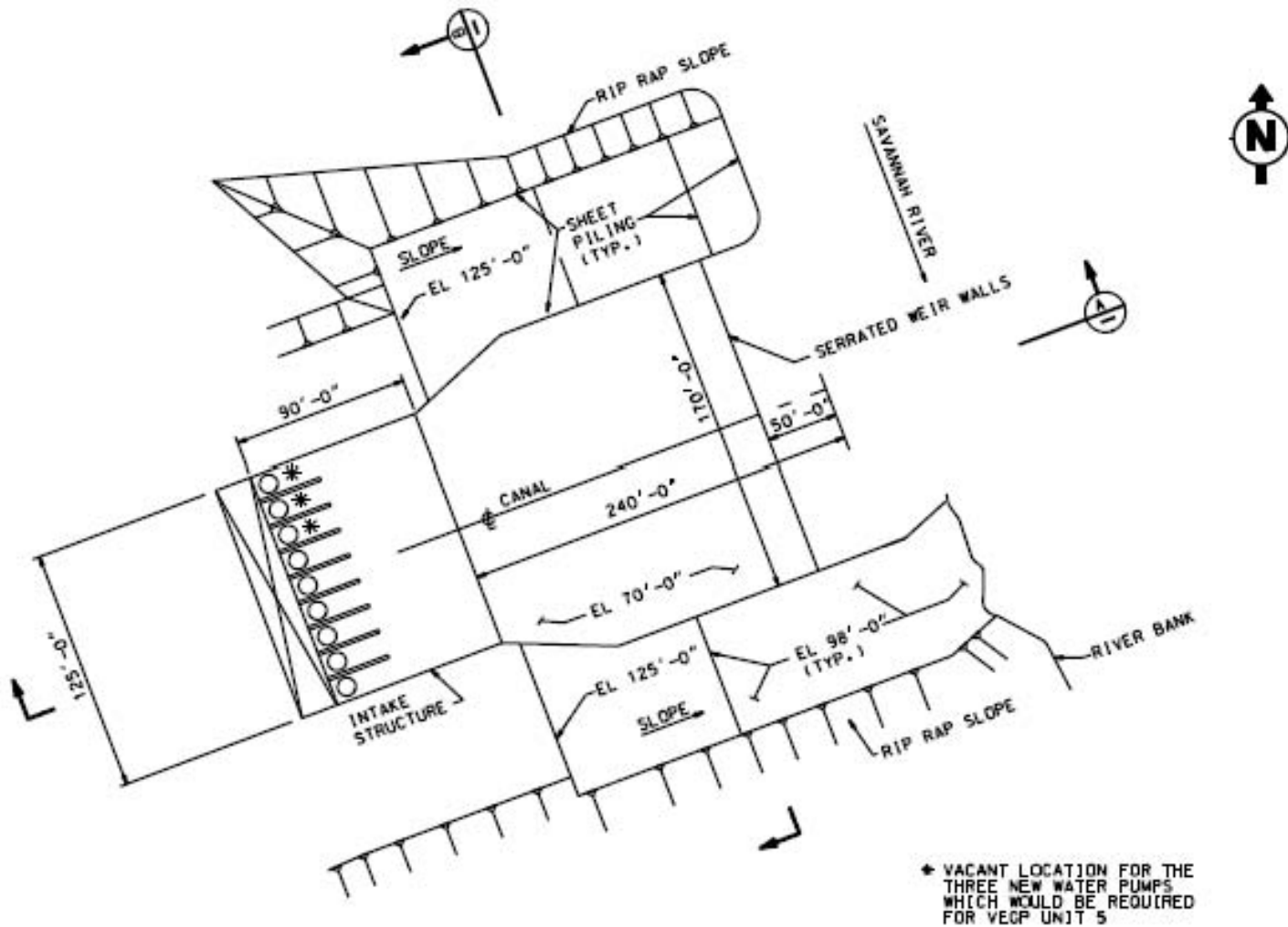
This document contains proprietary, confidential, and/or trade secret information of the subsidiaries of The Southern Company or of third parties. It is intended for use only by employees of, or authorized contractors of The



Intake Structure

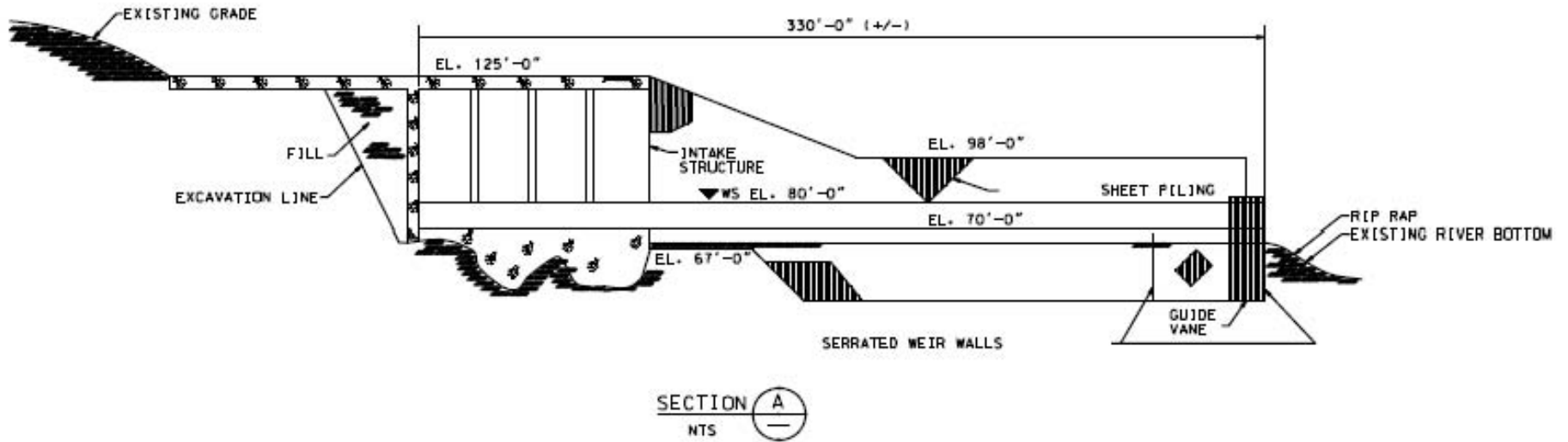


Intake Structure

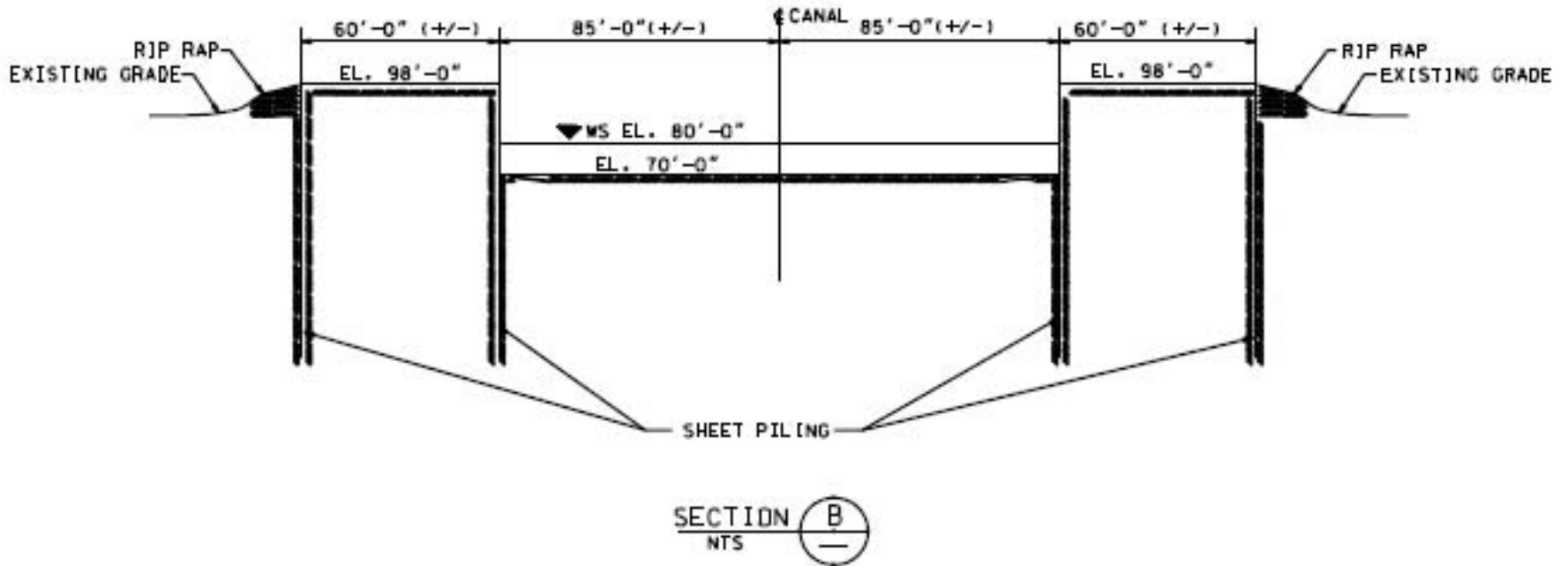


* VACANT LOCATION FOR THE THREE NEW WATER PUMPS WHICH WOULD BE REQUIRED FOR VEGP UNIT 5

Intake Structure



Intake Structure





Hazard Analysis

- Hazards Analysis
 - Waterways
 - Airways
 - Rail and Roads
 - Industrial and Military Facilities

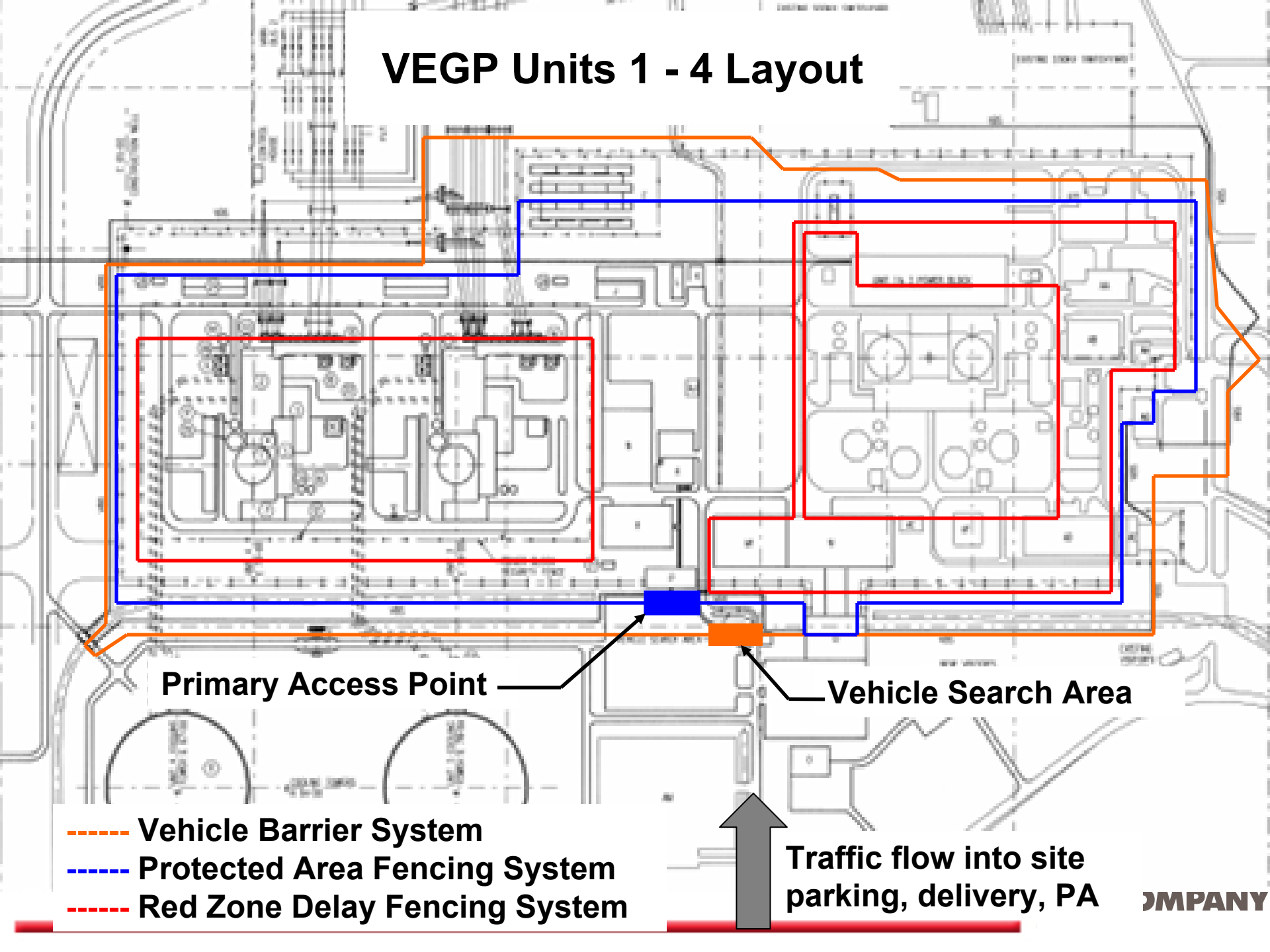
Note: Complete analysis conducted in Early Site Permit (Part 2, Section 2.2)
Revision 4 submitted to NRC by Southern Nuclear Operating Company



Security Overview

- Site Security
 - Ken Dyar

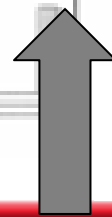
VEGP Units 1 - 4 Layout



Primary Access Point

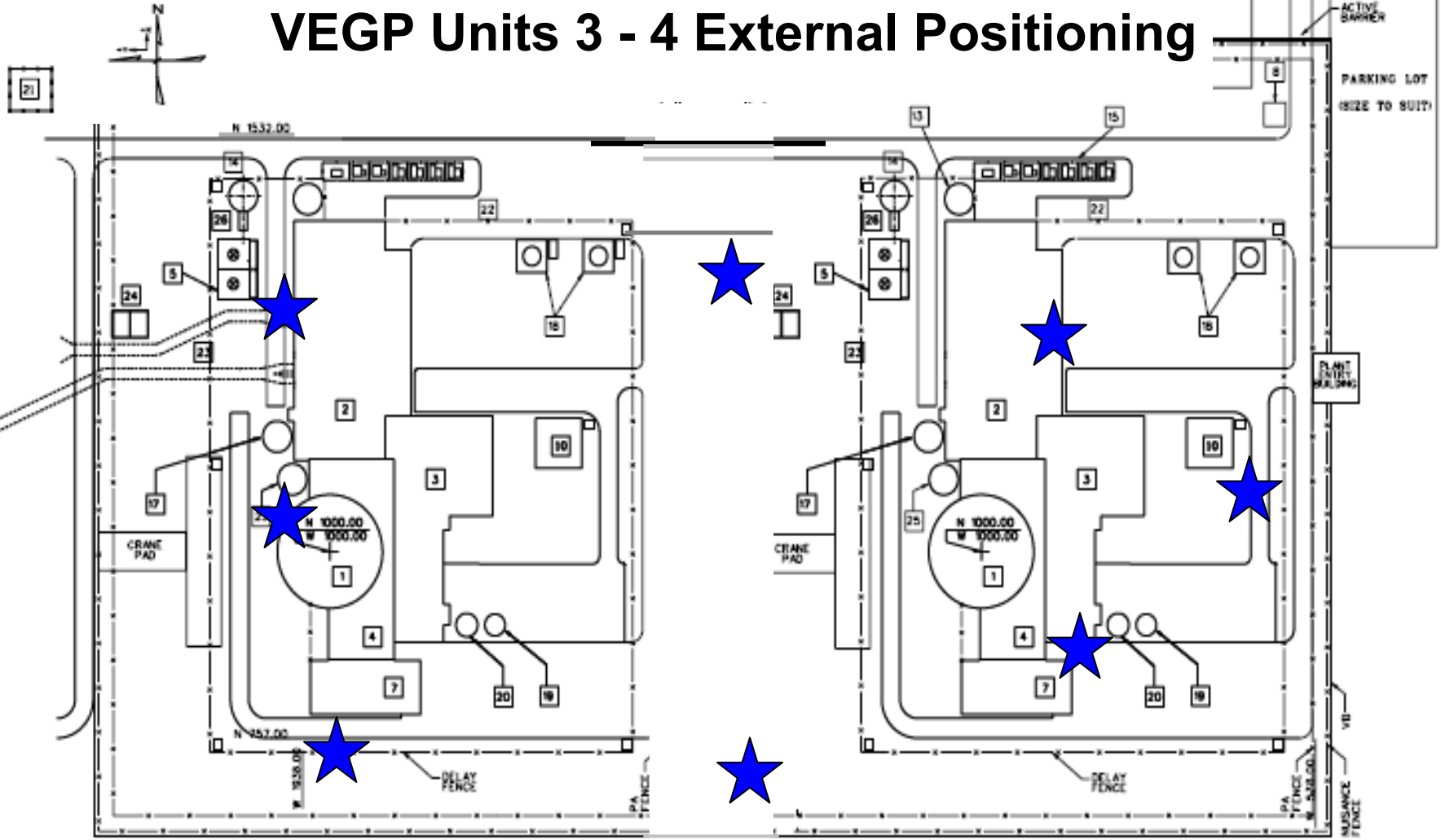
Vehicle Search Area

- Vehicle Barrier System**
- Protected Area Fencing System**
- Red Zone Delay Fencing System**



Traffic flow into site parking, delivery, PA

VEGP Units 3 - 4 External Positioning



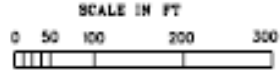
- 1. CONTAINMENT/SHIELD BUILDING
- 2. TURBINE BUILDING
- 3. ANNEX BUILDING
- 4. AUXILIARY BUILDING
- 5. SWIS COOLING TOWERS
- 7. RADWASTE BUILDING

- 8. PLANT ENTRANCE
- 9. CIRCULATING WATER PUMP INTAKE STRUCTURE
- 10. DIESEL GENERATOR BUILDING
- 11. CWS COOLING TOWER
- 12. CWS INTAKE CANAL
- 13. FIRE WATER/CLEARWELL STORAGE TANK

LEGEND

- 14. FIRE WATER STORAGE TANK
- 15. TRANSFORMER AREA
- 16. SWITCHYARD
- 17. CONDENSATE STORAGE TANK
- 18. DIESEL GENERATOR FUEL OIL STORAGE TANKS
- 19. DEMINERALIZED WATER STORAGE TANK

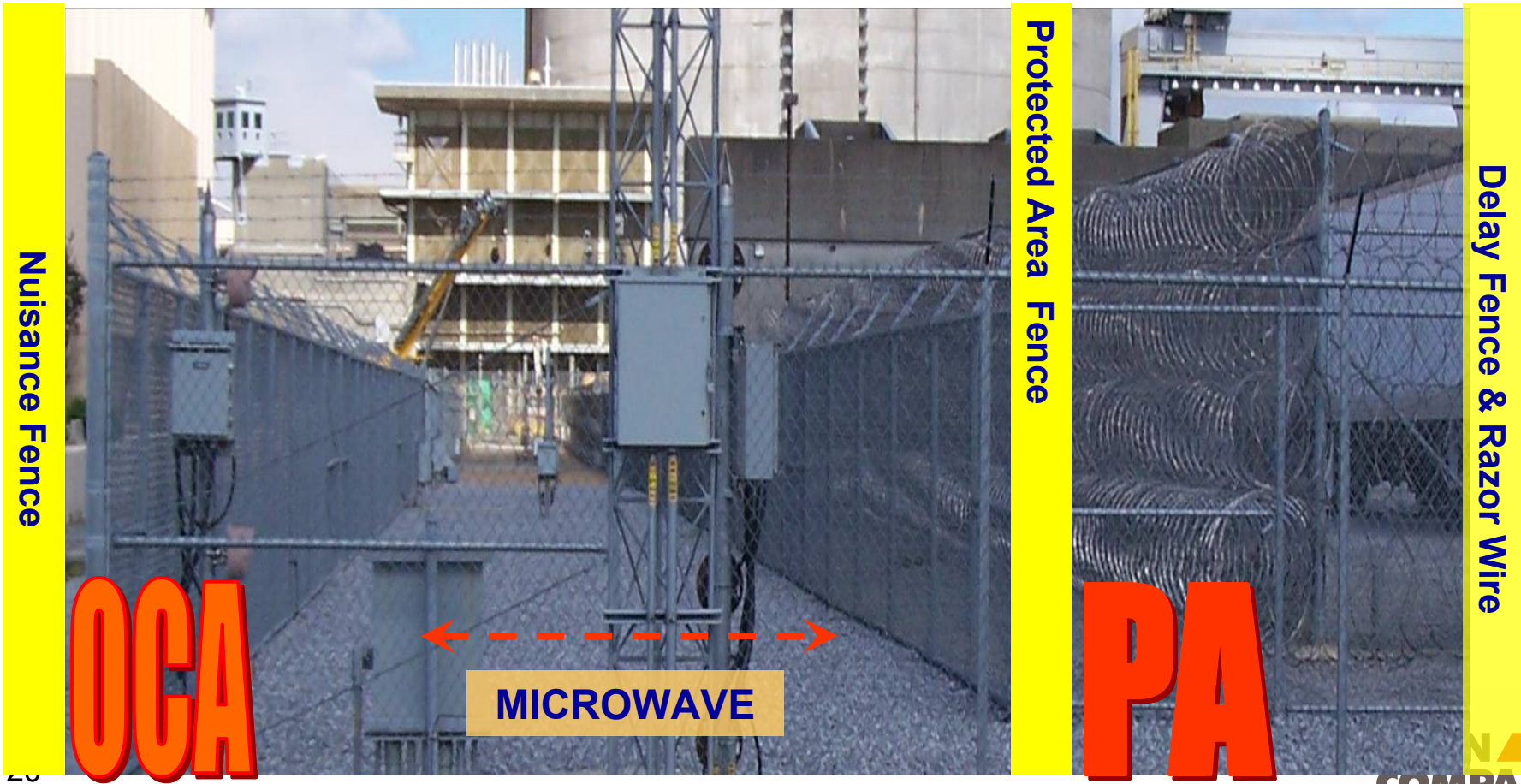
- 20. BORIC ACID STORAGE TANK
- 21. HYDROGEN STORAGE TANK AREA
- 22. TURBINE BUILDING LAYDOWN AREA
- 23. CIRCULATING WATER PIPE
- 24. WASTE WATER RETENTION BASIN
- 25. PASSIVE CONTAINMENT COOLING ANCHILLARY WATER STORAGE TANK
- 26. DIESEL-DRIVEN FIRE PUMP / ENCLOSURE





TYPICAL BULLET RESISTING ENCLOSURES AND DEFENSIVE POSITIONS

TYPICAL INTRUSION DETECTION SYSTEM CONFIGURATION



Nuisance Fence

Protected Area Fence

Delay Fence & Razor Wire

OCA

MICROWAVE

PA

TYPICAL INTRUSION DETECTION AND ASSESSMENT CONFIGURATION AND EQUIPMENT





TYPICAL DELAY AND RED ZONE FENCE CONFIGURATIONS





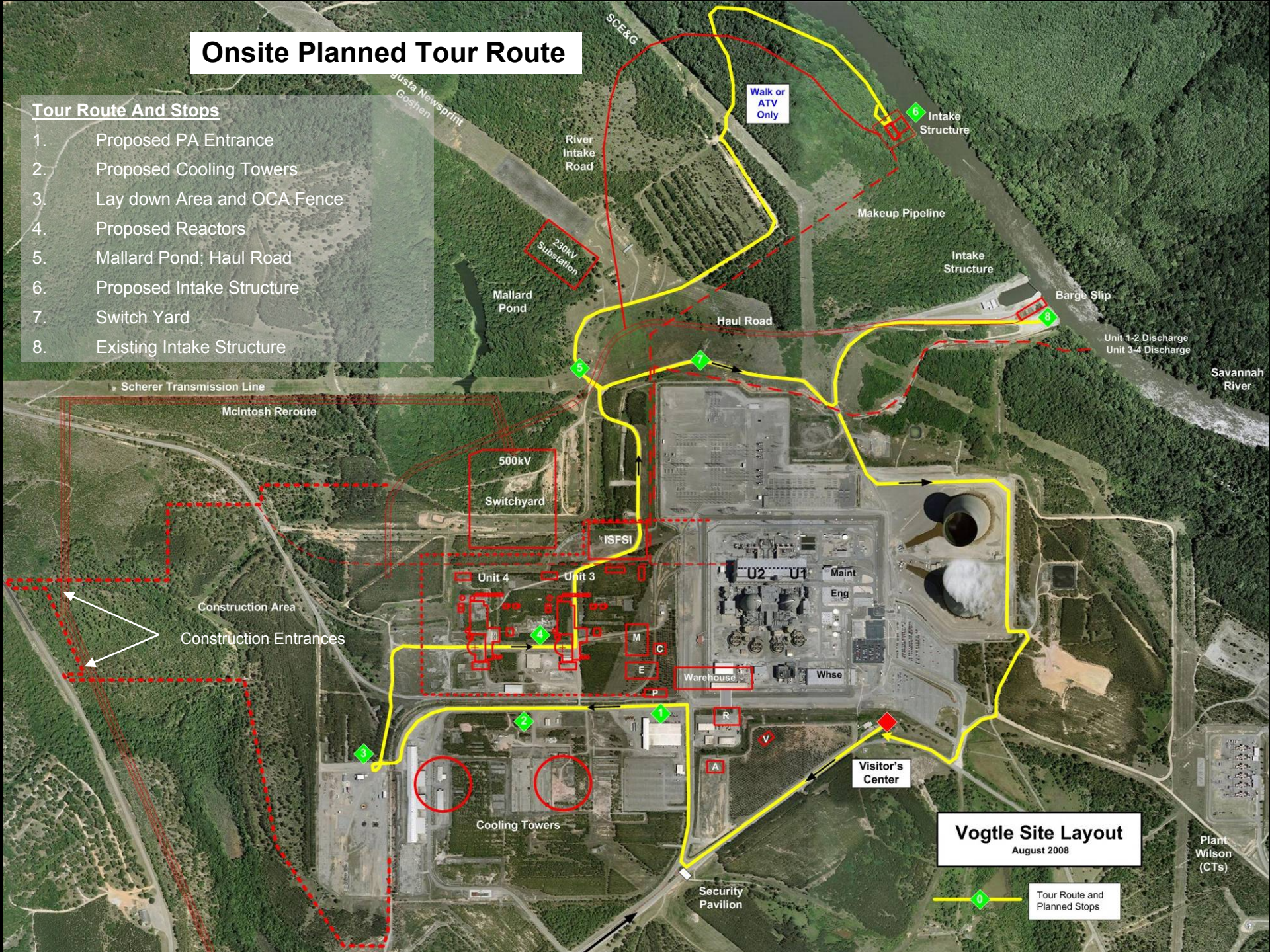
Site Tour

- Onsite Tour (Owner Controlled Area, New Intake Structure, etc.)
- Offsite Tour (Public Roads, Boat Launches, etc.)

Onsite Planned Tour Route

Tour Route And Stops

1. Proposed PA Entrance
2. Proposed Cooling Towers
3. Lay down Area and OCA Fence
4. Proposed Reactors
5. Mallard Pond; Haul Road
6. Proposed Intake Structure
7. Switch Yard
8. Existing Intake Structure



Vogle Site Layout

August 2008

Tour Route and Planned Stops

Plant Wilson (CTs)

Offsite Tour Map

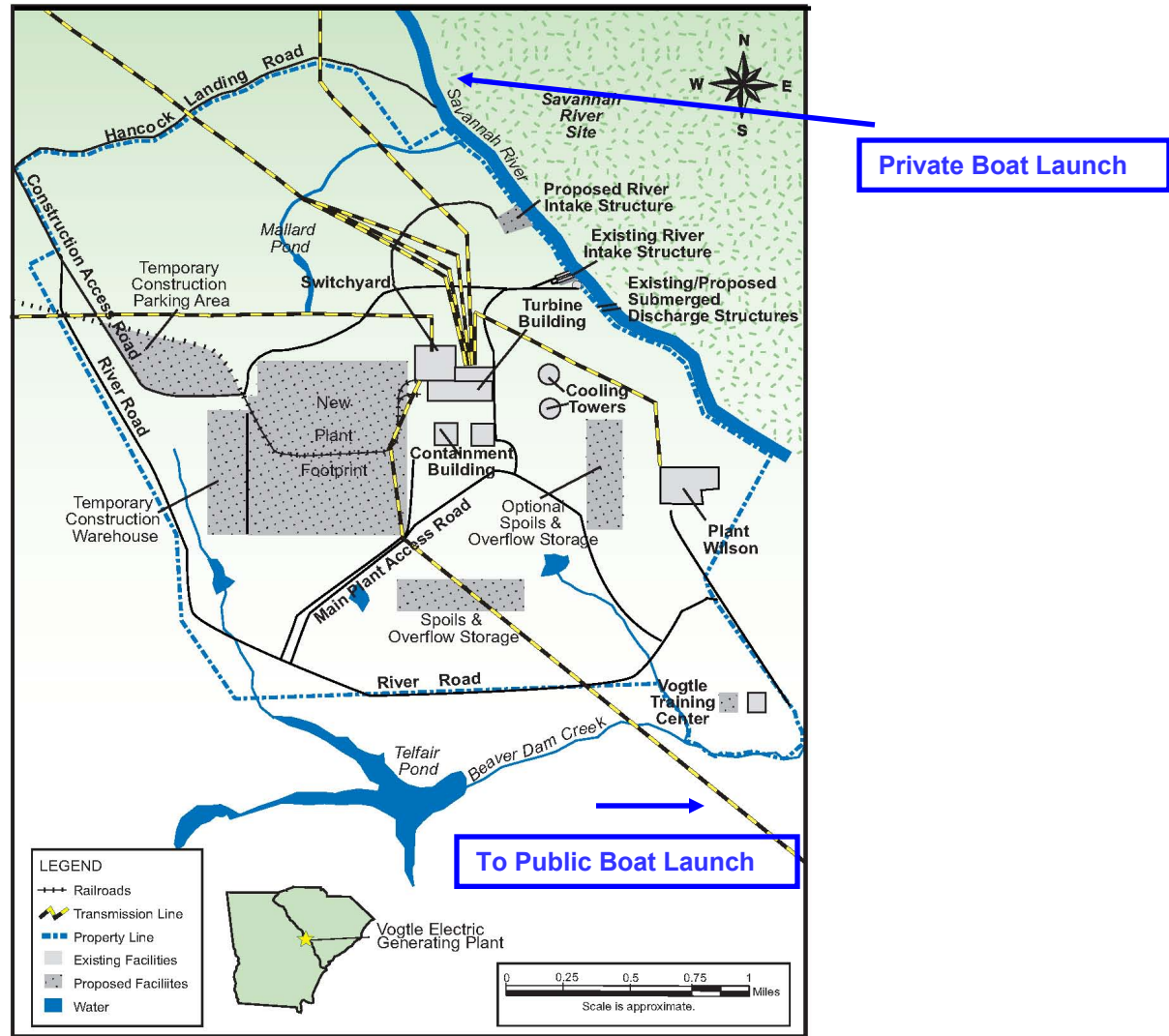


Figure 2.1-1 VEGP Site and Proposed New Plant Footprint



Site Tour - Remember Safety!



•Vehicle Safety

- Wear safety belts
- Drive cautiously

•Tripping Hazards

- Watch your step loading and unloading
- Use caution when walking on uneven terrain
- Do not walk on rip-rap

•PPE (hard hats, safety glasses, ear protection as required)

- Required inside designated areas (Intake Structure)
- SNC will provide all necessary PPE



Final Discussions

Discussions/Questions