

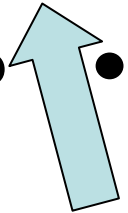
Figure 3

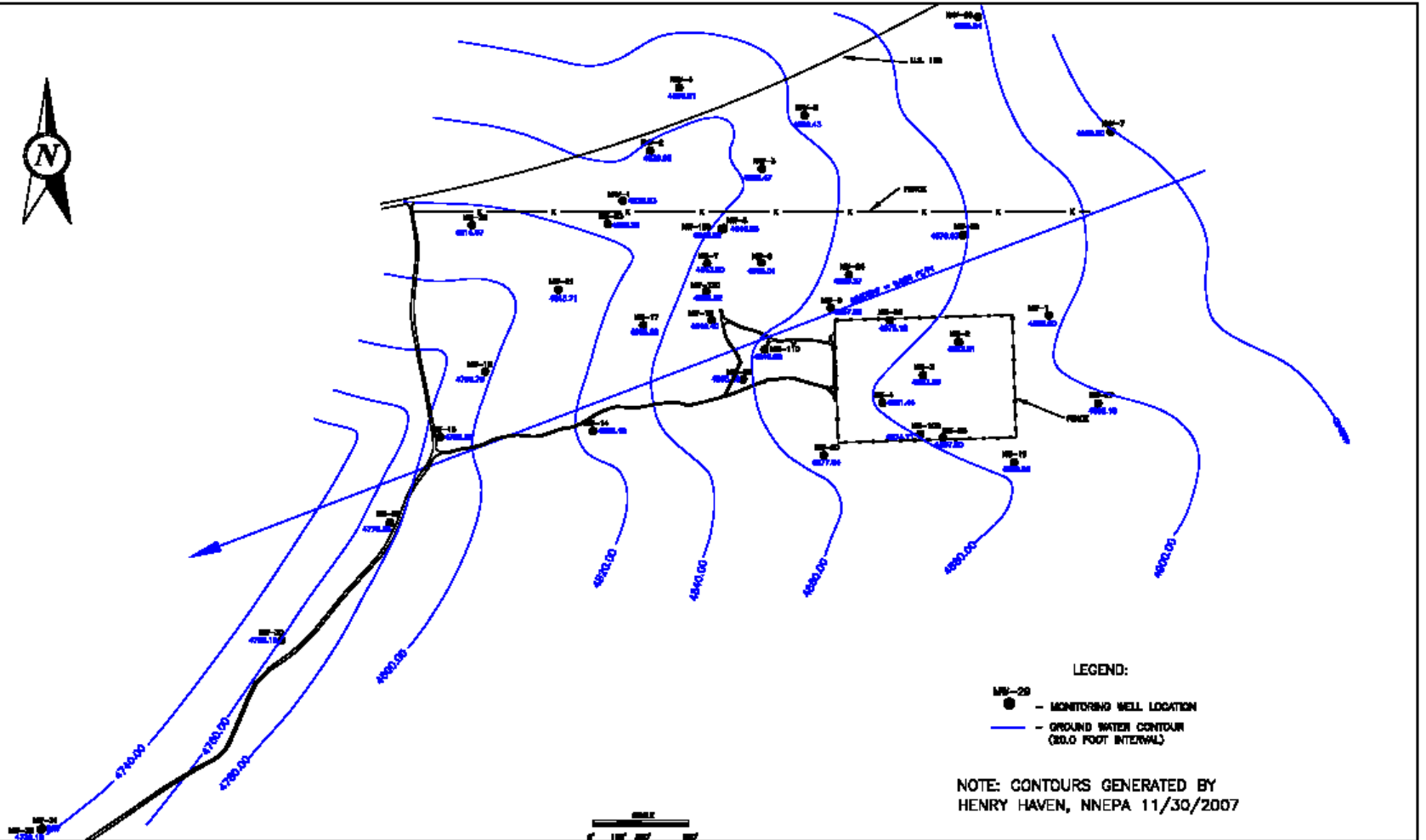
● Proposed Monitoring Well Location

### Tuba City Open Dump

Ground Water Elevations

● Monitoring Wells





LEGEND:  
MW-29 - MONITORING WELL LOCATION  
- GROUND WATER CONTOUR (20.0 FOOT INTERVAL)

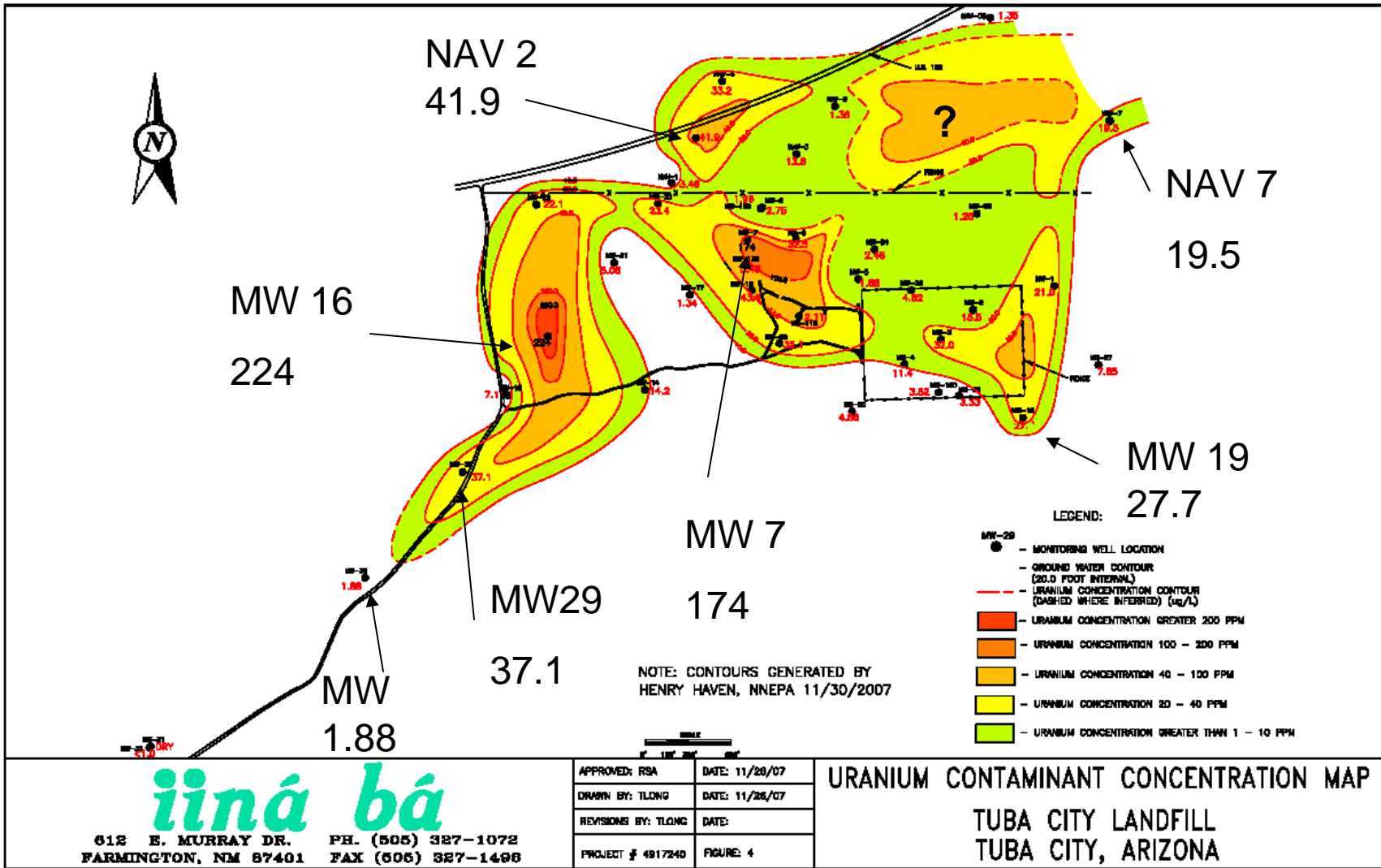
NOTE: CONTOURS GENERATED BY HENRY HAVEN, NNEPA 11/30/2007

**iiná bá**

618 E. MURRAY DR. PH. (505) 327-1072  
FARMINGTON, NM 87401 FAX (505) 327-1496

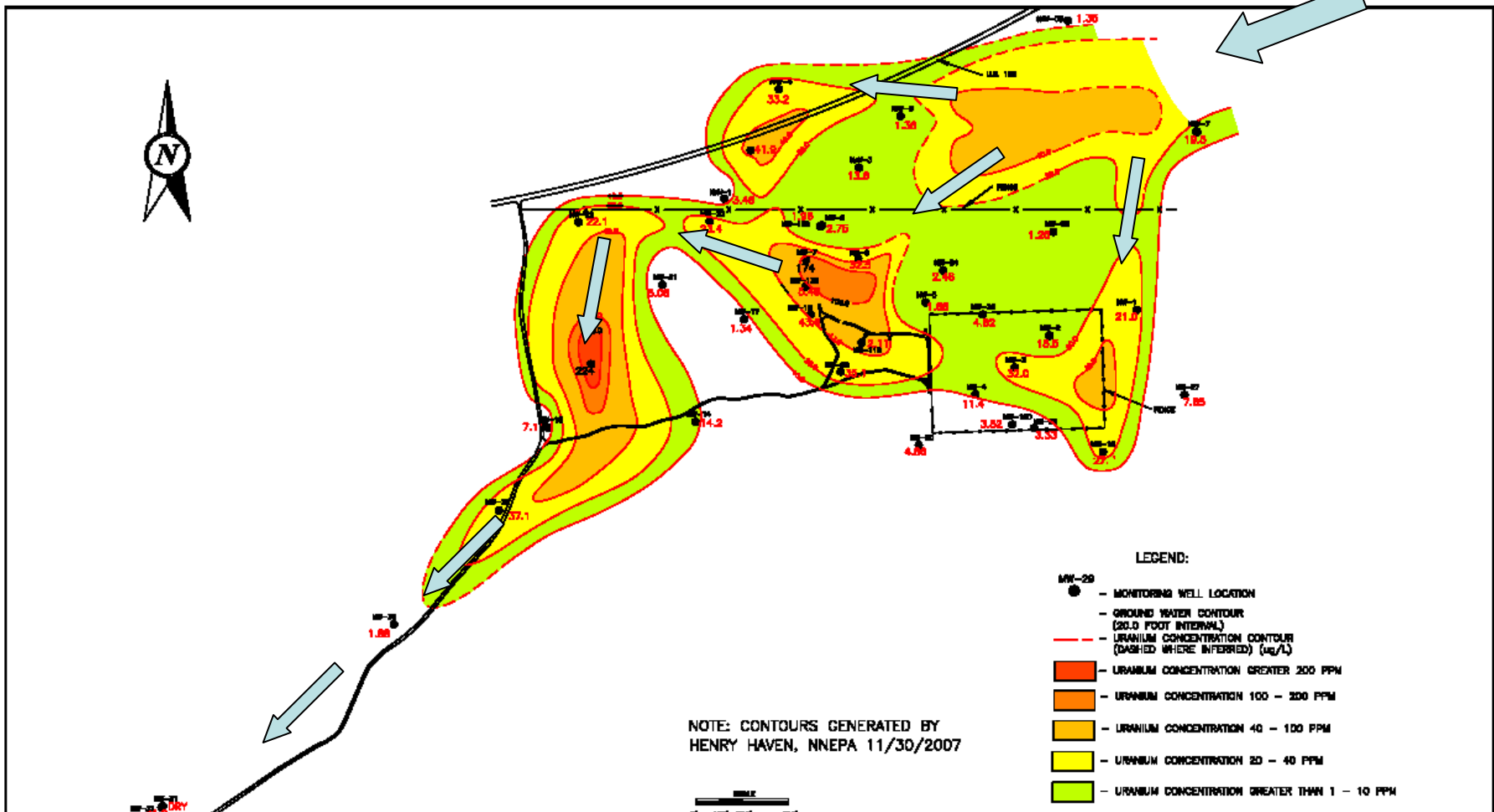
|                     |                |
|---------------------|----------------|
| APPROVED: RSA       | DATE: 11/28/07 |
| DRAWN BY: TLONG     | DATE: 11/28/07 |
| REVISIONS BY: TLONG | DATE:          |
| PROJECT # 4817240   | FIGURE: 3      |

POTENTIOMETRIC SURFACE MAP  
TUBA CITY LANDFILL  
TUBA CITY, ARIZONA



Note: Uranium concentration unit is in ppb

????



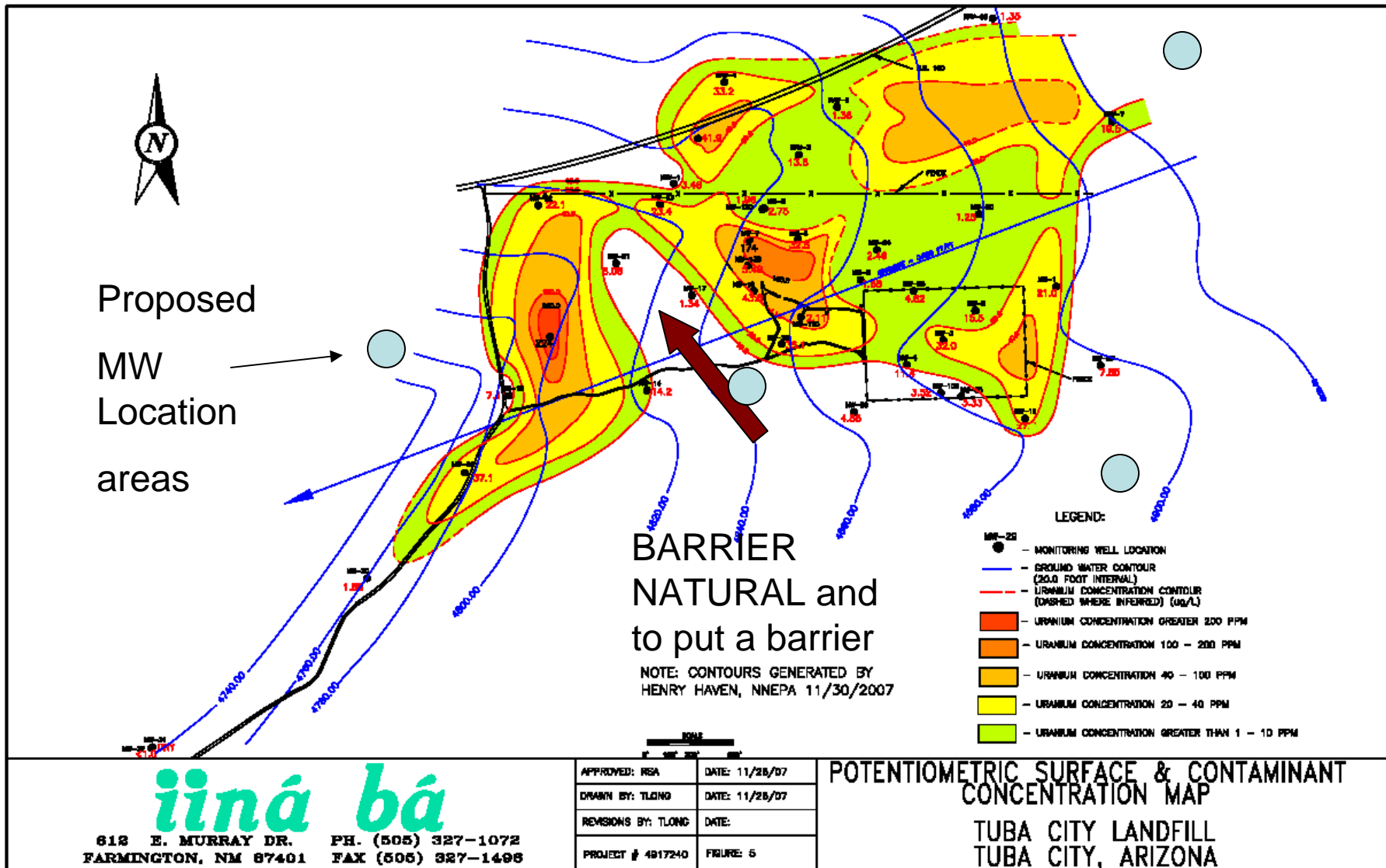
**iiná bá**

612 E. MURRAY DR. PH. (505) 327-1072  
FARMINGTON, NM 87401 FAX (505) 327-1498

|                     |                |
|---------------------|----------------|
| APPROVED: RSA       | DATE: 11/20/07 |
| DRAWN BY: TLONG     | DATE: 11/28/07 |
| REVISIONS BY: TLONG | DATE:          |
| PROJECT # 4917240   | FIGURE: 4      |

**URANIUM CONTAMINANT CONCENTRATION MAP**  
**TUBA CITY LANDFILL**  
**TUBA CITY, ARIZONA**

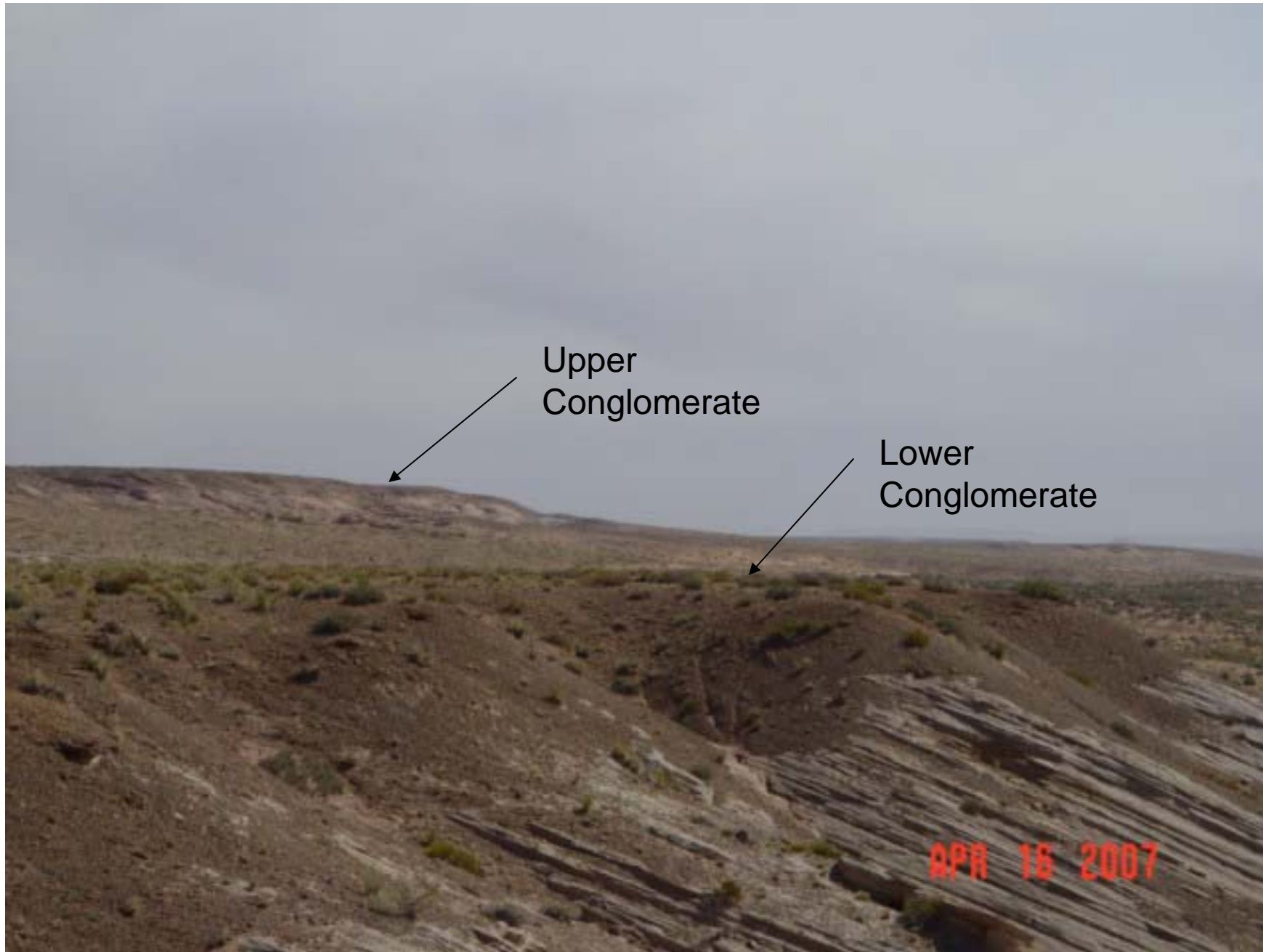
Note: Uranium concentration unit is in ppb



Note: Uranium concentration unit is in ppb





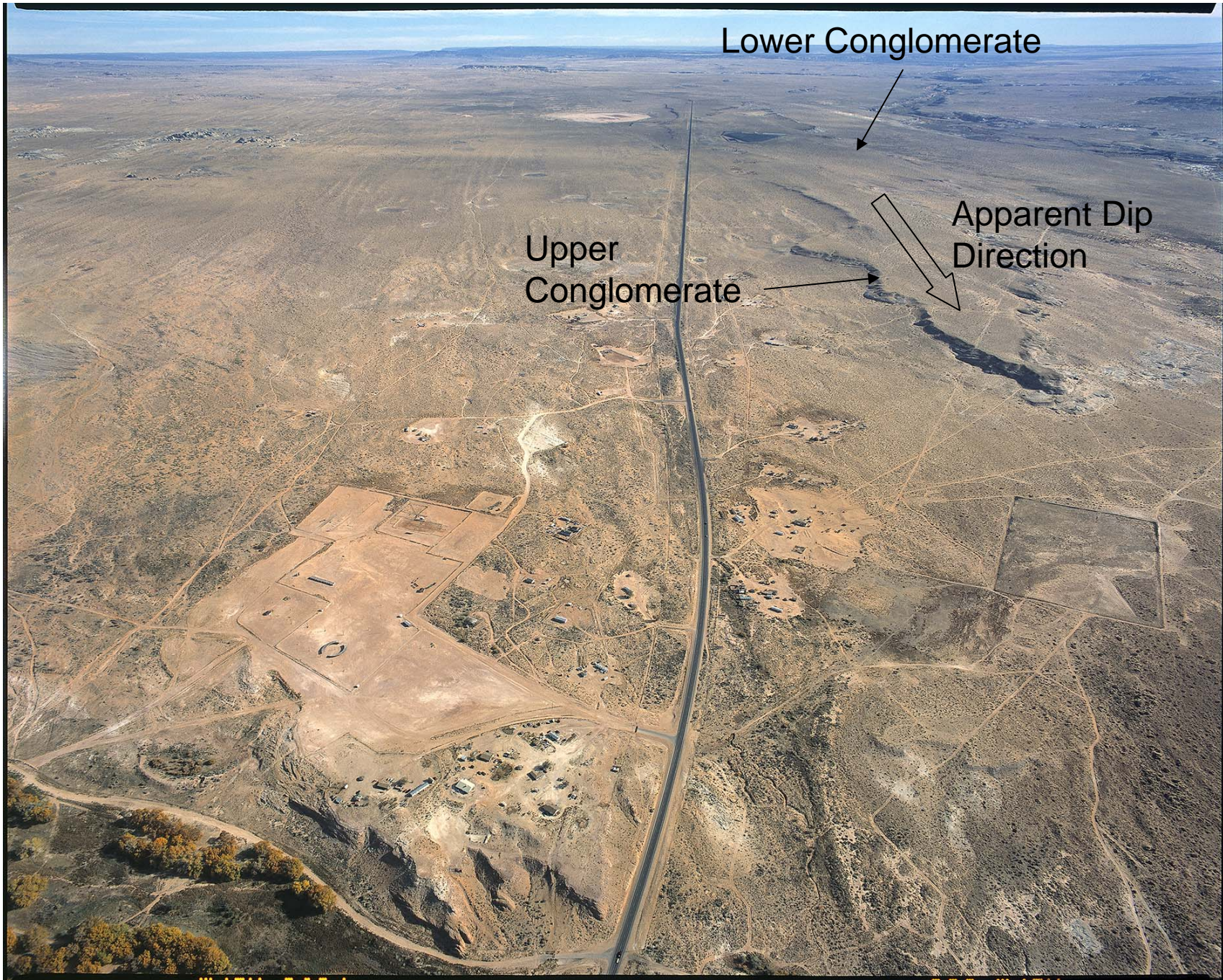


Upper  
Conglomerate

Lower  
Conglomerate

APR 16 2007





Lower Conglomerate

Upper  
Conglomerate

Apparent Dip  
Direction





Upper

UMTRA SITE

TUBA CITY, AZ

Lower

What are the cleanup levels? Uranium?  
Others?

Is there a lining under the site?



Proposed Locations?

Water Flow Directions ???



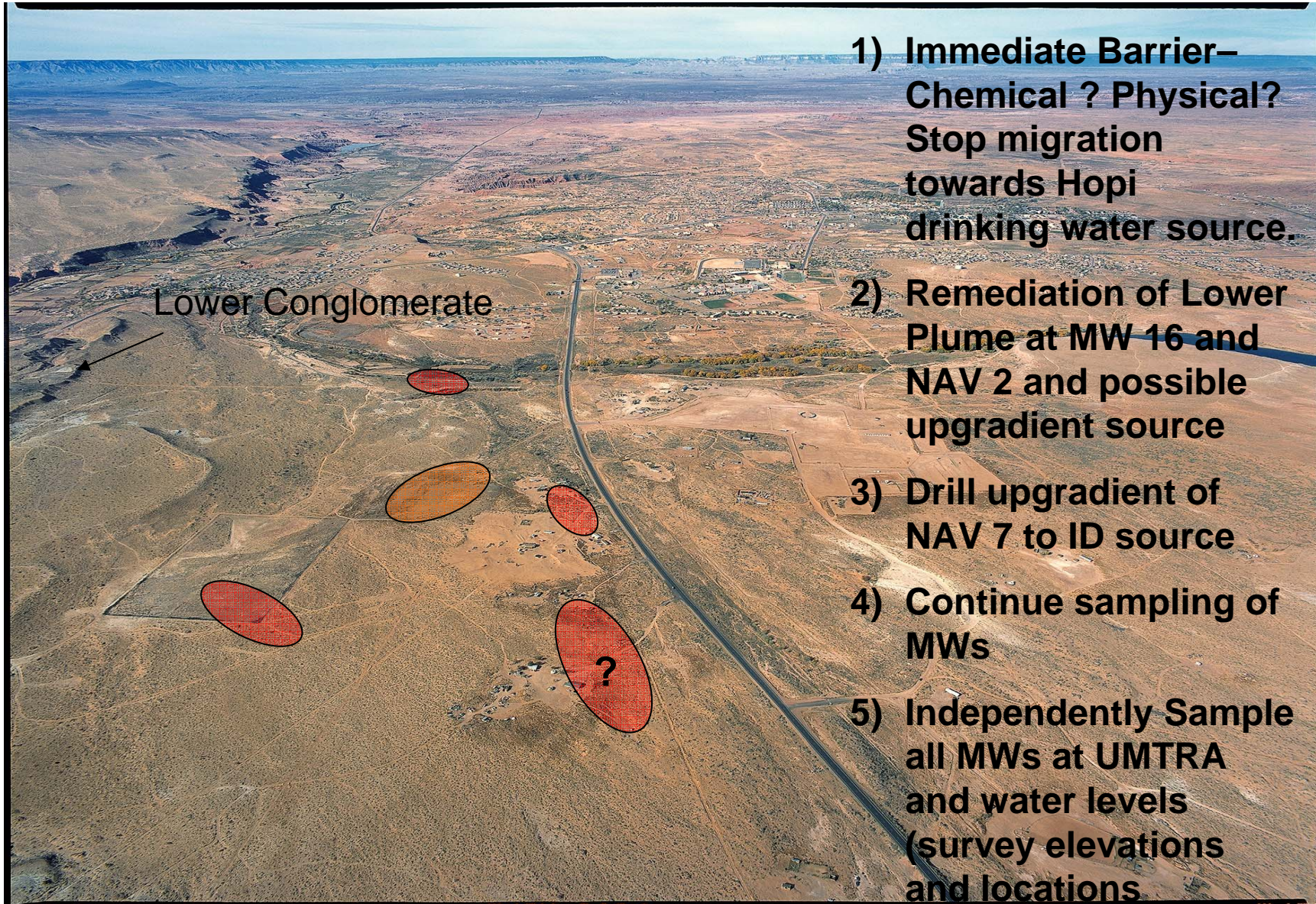


?

Barrier



## Recommendations:



1) Immediate Barrier—  
Chemical ? Physical?  
Stop migration  
towards Hopi  
drinking water source.

2) Remediation of Lower  
Plume at MW 16 and  
NAV 2 and possible  
upgradient source

3) Drill upgradient of  
NAV 7 to ID source

4) Continue sampling of  
MWs

5) Independently Sample  
all MWs at UMTRA  
and water levels  
(survey elevations  
and locations

6) Investigate other  
funding sources