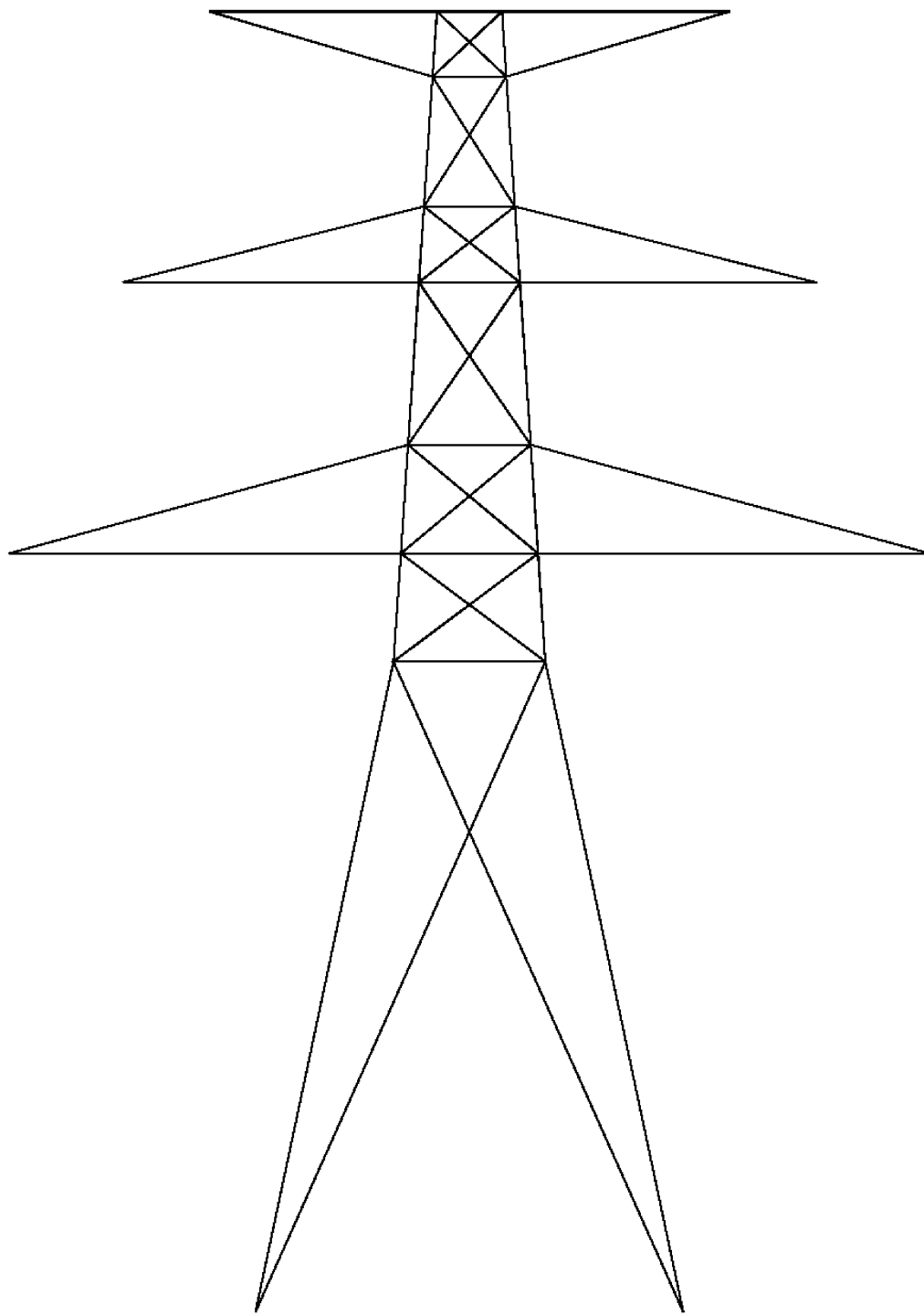
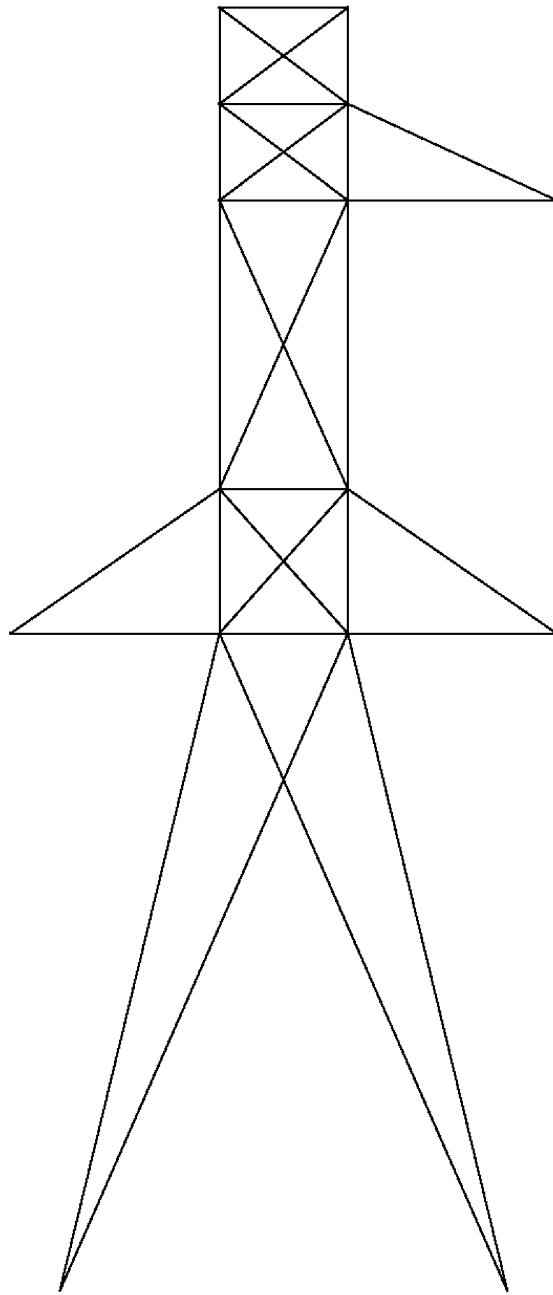


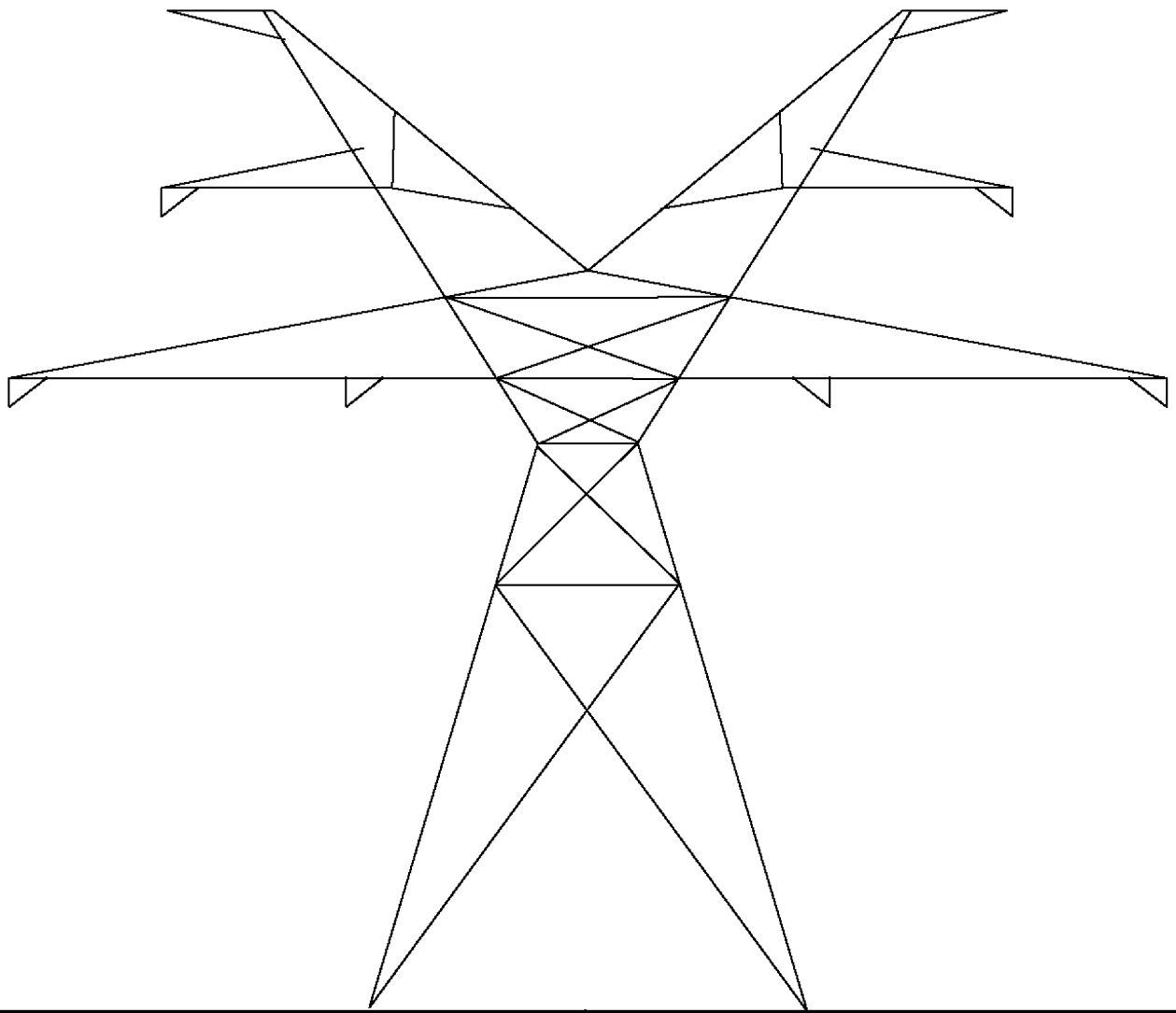
TYPICAL 345 KV
V TYPE TOWER
TANGENT TOWER



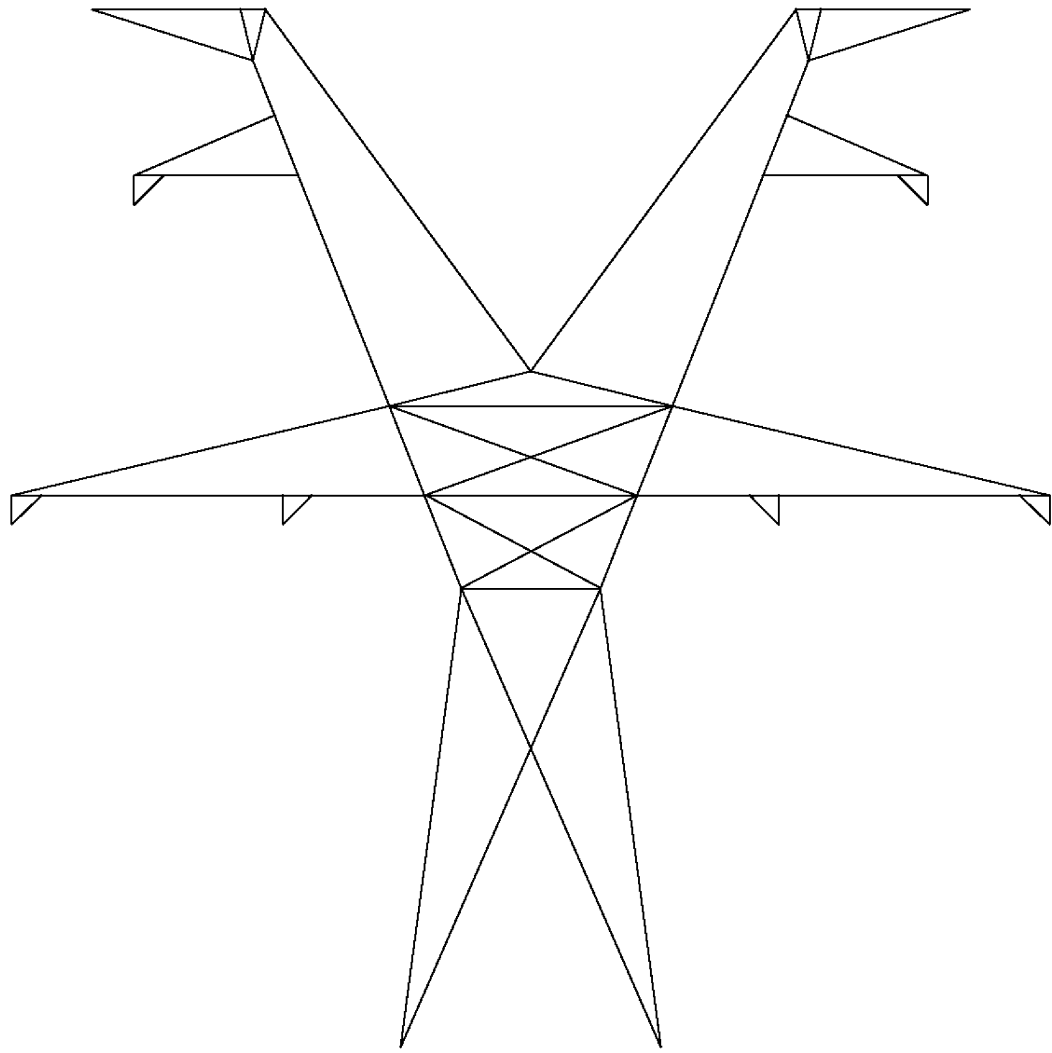
TYPICAL 345 KV
V TYPE TOWER
70-DEG ANGLE TOWER



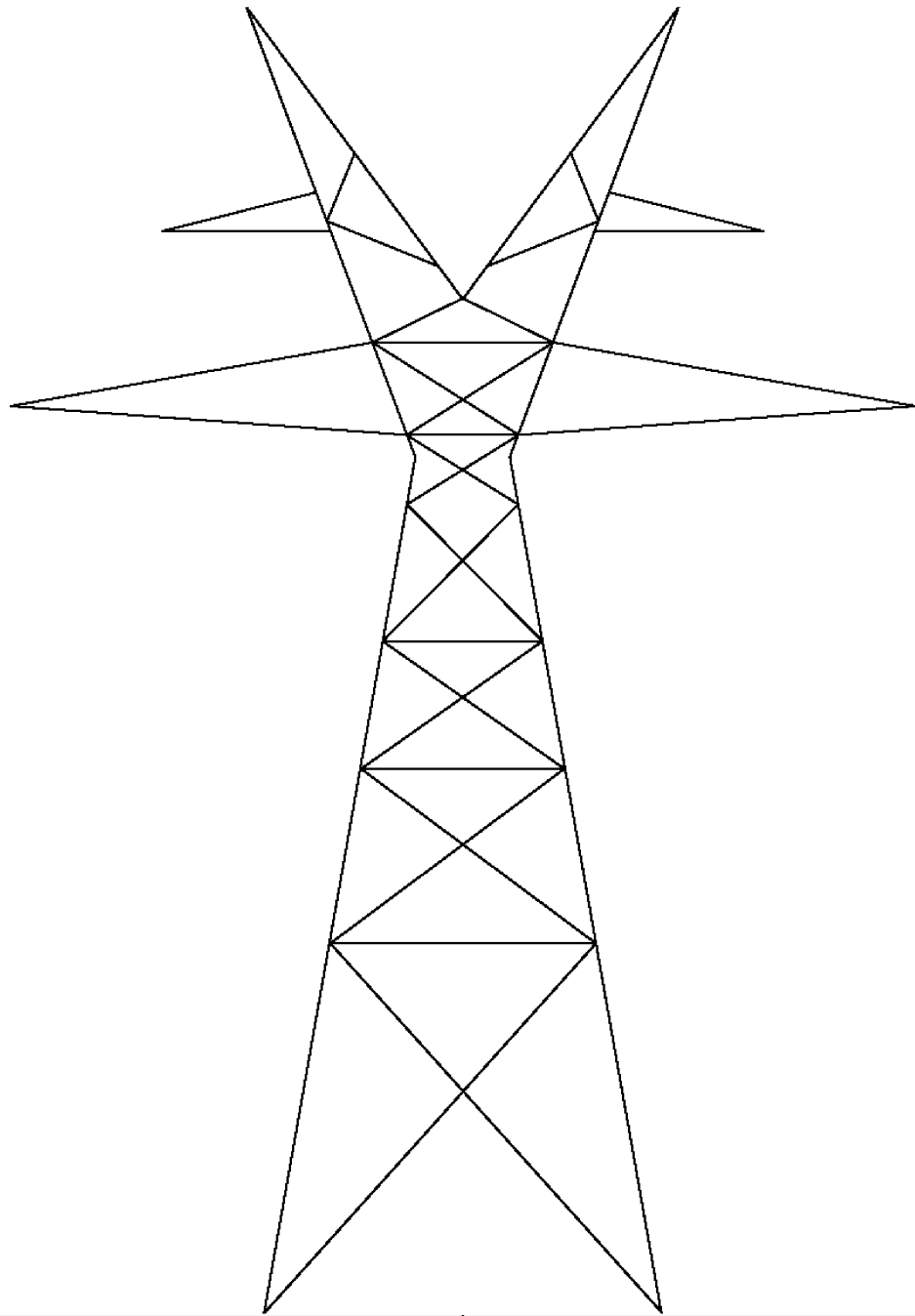
TYPICAL 345 KV
V TYPE TOWER
90-DEG DEADEND TOWER
(2 REQ'D FOR DBL CIRCUIT)



TYPICAL 345 KV
V TYPE TOWER
25-DEG ANGLE TOWER



TYPICAL 345 KV
V TYPE TOWER
10-DEG ANGLE TOWER



TYPICAL 345 KV
V TYPE TOWER
5-DEG TOWER