

APPENDIX D: DIRECT MEASUREMENT AND SMEAR RESULTS

α eff	β eff
0.3588	0.2849

Sample Count Time (min)	Daily Background Count
4.0	20.0

dpm/100 cm ²	
α Flag	β Flag
8	1000

* Morning Daily

seq. #	Sample ID# and Description	Date	Background Total Counts*		Sample Total Counts		Background (cpm)		Sample Counts (cpm)		Sample (dpm/100 cm ²)		> α flag	> β flag	Tech. Initial
			α	β	α	β	α	β	α	β	α	β			
11	Rail Scale Survey #1	10/31/2006	3	978	1	194	0.2	48.9	0.25	49	0.3	-1			GB
12	Rail Scale Survey #2	10/31/2006	3	978	0	209	0.2	48.9	0.00	52	-0.4	12			GB
13	Rail Scale Survey #3	10/31/2006	3	978	1	198	0.2	48.9	0.25	50	0.3	2			GB
14	Rail Scale Survey #4	10/31/2006	3	978	2	190	0.2	48.9	0.50	48	1.0	-5			GB
15	Rail Scale Survey #5	10/31/2006	3	978	2	194	0.2	48.9	0.50	49	1.0	-1			GB
16	Rail Scale Survey #6	10/31/2006	3	978	0	187	0.2	48.9	0.00	47	-0.4	-8			GB
17	Rail Scale Survey #7	10/31/2006	3	978	0	204	0.2	48.9	0.00	51	-0.4	7			GB
18	Rail Scale Survey #8	10/31/2006	3	978	1	192	0.2	48.9	0.25	48	0.3	-3			GB
19	Rail Scale Survey #9	10/31/2006	3	978	1	216	0.2	48.9	0.25	54	0.3	18			GB
20	Rail Scale Survey #10	10/31/2006	3	978	3	183	0.2	48.9	0.75	46	1.7	-11			GB
21	Rail Scale Survey #11	10/31/2006	3	978	1	203	0.2	48.9	0.25	51	0.3	6			GB
22	Rail Scale Survey #12	10/31/2006	3	978	1	196	0.2	48.9	0.25	49	0.3	0			GB
23	Rail Scale Survey #13	10/31/2006	3	978	2	175	0.2	48.9	0.50	44	1.0	-18			GB
24	Rail Scale Survey #14	10/31/2006	3	978	2	207	0.2	48.9	0.50	52	1.0	10			GB
25	Rail Scale Survey #15	10/31/2006	3	978	3	212	0.2	48.9	0.75	53	1.7	14			GB
26	Rail Scale Survey #16	10/31/2006	3	978	2	209	0.2	48.9	0.50	52	1.0	12			GB
27	Rail Scale Survey #17	10/31/2006	3	978	0	192	0.2	48.9	0.00	48	-0.4	-3			GB
28	Rail Scale Survey #18	10/31/2006	3	978	5	191	0.2	48.9	1.25	48	3.1	-4			GB
29	Rail Scale Survey #19	10/31/2006	3	978	1	208	0.2	48.9	0.25	52	0.3	11			GB
30	Rail Scale Survey #20	10/31/2006	3	978	2	199	0.2	48.9	0.50	50	1.0	3			GB
61	Shrinkwrapping Area Outside #1	11/7/2006	3	1002	0	196	0.2	50.1	0.00	49	-0.4	-4			GB
62	Shrinkwrapping Area Outside #2	11/7/2006	3	1002	2	210	0.2	50.1	0.50	53	1.0	8			GB
63	Shrinkwrapping Area Outside #3	11/7/2006	1	1021	5	206	0.1	51.1	1.25	52	3.3	2			GB
64	Shrinkwrapping Area Outside #4	11/8/2006	1	1021	3	220	0.1	51.1	0.75	55	2.0	14			GB
65	Shrinkwrapping Area Outside #5	11/8/2006	1	1021	6	189	0.1	51.1	1.50	47	4.0	-13			GB
66	Shrinkwrapping Area Outside #6	11/8/2006	1	1021	1	192	0.1	51.1	0.25	48	0.6	-11			GB
67	Shrinkwrapping Area Outside #7	11/8/2006	1	1021	5	221	0.1	51.1	1.25	55	3.3	15			GB
68	Shrinkwrapping Area Outside #8	11/8/2006	1	1021	5	206	0.1	51.1	1.25	52	3.3	2			GB
69	Shrinkwrapping Area Outside #9	11/8/2006	1	1021	1	203	0.1	51.1	0.25	51	0.6	-1			GB
70	Shrinkwrapping Area Outside #10	11/8/2006	1	1021	0	197	0.1	51.1	0.00	49	-0.1	-6			GB
71	Storage/Transport Area #1	11/8/2006	1	1021	4	190	0.1	51.1	1.00	48	2.6	-12			GB

α eff	β eff
0.3588	0.2849

Sample Count Time (min)	Daily Background Count
4.0	20.0

dpm/100 cm ²	
α Flag	β Flag
8	1000

* Morning Daily

seq. #	Sample ID# and Description	Date	Background Total Counts*		Sample Total Counts		Background (cpm)		Sample Counts (cpm)		Sample (dpm/100 cm ²)		> α flag	> β flag	Tech. Initial
			α	β	α	β	α	β	α	β	α	β			
72	Storage/Transport Area #2	11/8/2006	1	1021	5	198	0.1	51.1	1.25	50	3.3	-5			GB
73	Storage/Transport Area #3	11/8/2006	1	1021	2	208	0.1	51.1	0.50	52	1.3	3			GB
74	Storage/Transport Area #4	11/8/2006	1	1021	3	168	0.1	51.1	0.75	42	2.0	-32			GB
75	Storage/Transport Area #5	11/8/2006	1	1021	3	218	0.1	51.1	0.75	55	2.0	12			GB
76	Storage/Transport Area #6	11/8/2006	1	1021	0	190	0.1	51.1	0.00	48	-0.1	-12			GB
77	Storage/Transport Area #7	11/8/2006	1	1021	4	251	0.1	51.1	1.00	63	2.6	41			GB
78	Storage/Transport Area #8	11/8/2006	1	1021	1	199	0.1	51.1	0.25	50	0.6	-5			GB
79	Storage/Transport Area #9	11/8/2006	1	1021	1	203	0.1	51.1	0.25	51	0.6	-1			GB
80	Storage/Transport Area #10	11/8/2006	1	1021	2	206	0.1	51.1	0.50	52	1.3	2			GB
81	Storage/Transport Area #11	11/8/2006	1	1021	2	199	0.1	51.1	0.50	50	1.3	-5			GB
82	Storage/Transport Area #12	11/8/2006	1	1021	1	192	0.1	51.1	0.25	48	0.6	-11			GB
83	Storage/Transport Area #13	11/8/2006	1	1021	4	280	0.1	51.1	1.00	70	2.6	67			GB
84	Storage/Transport Area #14	11/8/2006	1	1021	2	181	0.1	51.1	0.50	45	1.3	-20			GB
85	Storage/Transport Area #15	11/8/2006	1	1021	2	196	0.1	51.1	0.50	49	1.3	-7			GB
86	Storage/Transport Area #16	11/8/2006	1	1021	0	202	0.1	51.1	0.00	51	-0.1	-2			GB
87	Storage/Transport Area #17	11/8/2006	1	1021	1	211	0.1	51.1	0.25	53	0.6	6			GB
88	Storage/Transport Area #18	11/8/2006	1	1021	0	193	0.1	51.1	0.00	48	-0.1	-10			GB
89	Storage/Transport Area #19	11/8/2006	1	1021	0	191	0.1	51.1	0.00	48	-0.1	-12			GB
90	Storage/Transport Area #20	11/8/2006	1	1021	1	211	0.1	51.1	0.25	53	0.6	6			GB
91	Paved Road #1	11/8/2006	1	1021	0	203	0.1	51.1	0.00	51	-0.1	-1			GB
92	Paved Road #2	11/8/2006	1	1021	0	213	0.1	51.1	0.00	53	-0.1	8			GB
93	Paved Road #3	11/8/2006	1	1021	1	198	0.1	51.1	0.25	50	0.6	-5			GB
94	Paved Road #4	11/8/2006	1	1021	0	176	0.1	51.1	0.00	44	-0.1	-25			GB
95	Paved Road #5	11/8/2006	1	1021	0	189	0.1	51.1	0.00	47	-0.1	-13			GB
96	Paved Road #6	11/8/2006	1	1021	3	208	0.1	51.1	0.75	52	2.0	3			GB
97	Paved Road #7	11/8/2006	1	1021	0	225	0.1	51.1	0.00	56	-0.1	18			GB
98	Paved Road #8	11/8/2006	1	1021	1	189	0.1	51.1	0.25	47	0.6	-13			GB
99	Paved Road #9	11/8/2006	1	1021	0	214	0.1	51.1	0.00	54	-0.1	9			GB
100	Paved Road #10	11/8/2006	1	1021	0	176	0.1	51.1	0.00	44	-0.1	-25			GB
101	Paved Road #11	11/8/2006	1	1021	2	218	0.1	51.1	0.50	55	1.3	12			GB
102	Paved Road #12	11/8/2006	1	1021	0	175	0.1	51.1	0.00	44	-0.1	-26			GB

α eff	β eff
0.3588	0.2849

Sample Count Time (min)	Daily Background Count
4.0	20.0

dpm/100 cm ²	
α Flag	β Flag
8	1000

* Morning Daily

seq. #	Sample ID# and Description	Date	Background Total Counts*		Sample Total Counts		Background (cpm)		Sample Counts (cpm)		Sample (dpm/100 cm ²)		> α flag	> β flag	Tech. Initial
			α	β	α	β	α	β	α	β	α	β			
103	Paved Road #13	11/8/2006	1	1021	1	202	0.1	51.1	0.25	51	0.6	-2			GB
104	Paved Road #14	11/8/2006	1	1021	0	195	0.1	51.1	0.00	49	-0.1	-8			GB
105	Paved Road #15	11/8/2006	1	1021	1	197	0.1	51.1	0.25	49	0.6	-6			GB
106	Paved Road #16	11/8/2006	1	1021	0	205	0.1	51.1	0.00	51	-0.1	1			GB
107	Paved Road #17	11/8/2006	1	1021	2	197	0.1	51.1	0.50	49	1.3	-6			GB
108	Paved Road #18	11/8/2006	1	1021	2	198	0.1	51.1	0.50	50	1.3	-5			GB
109	Paved Road #19	11/8/2006	1	1021	1	197	0.1	51.1	0.25	49	0.6	-6			GB
110	Paved Road #20	11/8/2006	1	1021	2	191	0.1	51.1	0.50	48	1.3	-12			GB

Detector Active Area (cm ²)
125

α eff	β eff
0.1785	0.1242

Static Count Time (min)
1.0

Daily Background Count
1.0

dpm/100 cm ²	
α Flag	β Flag
60	1000

* Morning Daily

seq. #	Sample ID# and Description	Date	Background Total Counts*		Sample Total Counts		Background (cpm)		Sample Counts (cpm)		Sample (dpm/100 cm ²)		> α flag	> β flag	Tech. Initial
			α	β	α	β	α	β	α	β					
283	Shrinkwrapping Area Inside #1	11/2/2006	7	301	12	340	7.0	301.0	12.00	340	22.4	251			
284	Shrinkwrapping Area Inside #2	11/2/2006	7	301	16	394	7.0	301.0	16.00	394	40.3	599			
285	Shrinkwrapping Area Inside #3	11/2/2006	7	301	8	377	7.0	301.0	8.00	377	4.5	490			
286	Shrinkwrapping Area Inside #4	11/2/2006	7	301	11	373	7.0	301.0	11.00	373	17.9	464			
287	Shrinkwrapping Area Inside #5	11/2/2006	7	301	6	396	7.0	301.0	6.00	396	-4.5	612			
288	Shrinkwrapping Area Inside #6	11/2/2006	7	301	9	341	7.0	301.0	9.00	341	9.0	258			
289	Shrinkwrapping Area Inside #7	11/2/2006	7	301	10	407	7.0	301.0	10.00	407	13.4	683			
290	Shrinkwrapping Area Inside #8	11/2/2006	7	301	6	417	7.0	301.0	6.00	417	-4.5	747			
291	Shrinkwrapping Area Inside #9	11/2/2006	7	301	5	371	7.0	301.0	5.00	371	-9.0	451			
292	Shrinkwrapping Area Inside #10	11/2/2006	7	301	11	350	7.0	301.0	11.00	350	17.9	316			
293	Shrinkwrapping Area Inside #11	11/2/2006	7	301	8	348	7.0	301.0	8.00	348	4.5	303			
294	Shrinkwrapping Area Inside #12	11/2/2006	7	301	12	303	7.0	301.0	12.00	303	22.4	13			
295	Shrinkwrapping Area Inside #13	11/2/2006	7	301	11	283	7.0	301.0	11.00	283	17.9	-116			
296	Shrinkwrapping Area Inside #14	11/2/2006	7	301	12	277	7.0	301.0	12.00	277	22.4	-155			
297	Shrinkwrapping Area Inside #15	11/2/2006	7	301	6	275	7.0	301.0	6.00	275	-4.5	-167			
298	Shrinkwrapping Area Inside #16	11/2/2006	7	301	8	217	7.0	301.0	8.00	217	4.5	-541			
299	Shrinkwrapping Area Inside #17	11/2/2006	7	301	5	281	7.0	301.0	5.00	281	-9.0	-129			
300	Shrinkwrapping Area Inside #18	11/2/2006	7	301	9	240	7.0	301.0	9.00	240	9.0	-393			
301	Shrinkwrapping Area Inside #19	11/2/2006	7	301	12	375	7.0	301.0	12.00	375	22.4	477			
302	Shrinkwrapping Area Inside #20	11/2/2006	7	301	5	365	7.0	301.0	5.00	365	-9.0	412			
303	Shrinkwrapping Area Outside #1	11/2/2006	13	285	11	303	13.0	285.0	11.00	303	-9.0	116			
304	Shrinkwrapping Area Outside #2	11/2/2006	13	285	10	287	13.0	285.0	10.00	287	-13.4	13			
305	Shrinkwrapping Area Outside #3	11/2/2006	13	285	14	295	13.0	285.0	14.00	295	4.5	64			
306	Shrinkwrapping Area Outside #4	11/2/2006	13	285	15	314	13.0	285.0	15.00	314	9.0	187			
307	Shrinkwrapping Area Outside #5	11/2/2006	13	285	16	307	13.0	285.0	16.00	307	13.4	142			
308	Shrinkwrapping Area Outside #6	11/2/2006	13	285	14	356	13.0	285.0	14.00	356	4.5	457			
309	Shrinkwrapping Area Outside #7	11/2/2006	13	285	20	306	13.0	285.0	20.00	306	31.4	135			
310	Shrinkwrapping Area Outside #8	11/2/2006	13	285	9	349	13.0	285.0	9.00	349	-17.9	412			
311	Shrinkwrapping Area Outside #9	11/2/2006	13	285	12	296	13.0	285.0	12.00	296	-4.5	71			
312	Shrinkwrapping Area Outside #10	11/2/2006	13	285	13	288	13.0	285.0	13.00	288	0.0	19			
313	Storage/Transport Area #1	11/2/2006	13	285	12	313	13.0	285.0	12.00	313	-4.5	180			

Detector Active Area (cm ²)
125

α eff	β eff
0.1785	0.1242

Static Count Time (min)
1.0

Daily Background Count
1.0

dpm/100 cm ²	
α Flag	β Flag
60	1000

* Morning Daily

seq. #	Sample ID# and Description	Date	Background Total Counts*		Sample Total Counts		Background (cpm)		Sample Counts (cpm)		Sample (dpm/100 cm ²)		> α flag	> β flag	Tech. Initial
			α	β	α	β	α	β	α	β					
314	Storage/Transport Area #2	11/2/2006	13	285	8	299	13.0	285.0	8.00	299	-22.4	90			
315	Storage/Transport Area #3	11/2/2006	13	285	16	288	13.0	285.0	16.00	288	13.4	19			
316	Storage/Transport Area #4	11/2/2006	13	285	15	295	13.0	285.0	15.00	295	9.0	64			
317	Storage/Transport Area #5	11/2/2006	13	285	6	274	13.0	285.0	6.00	274	-31.4	-71			
318	Storage/Transport Area #6	11/2/2006	13	285	13	289	13.0	285.0	13.00	289	0.0	26			
319	Storage/Transport Area #7	11/2/2006	13	285	11	295	13.0	285.0	11.00	295	-9.0	64			
320	Storage/Transport Area #8	11/2/2006	13	285	13	277	13.0	285.0	13.00	277	0.0	-52			
321	Storage/Transport Area #9	11/2/2006	13	285	16	281	13.0	285.0	16.00	281	13.4	-26			
322	Storage/Transport Area #10	11/2/2006	13	285	16	309	13.0	285.0	16.00	309	13.4	155			
323	Storage/Transport Area #11	11/2/2006	13	285	9	268	13.0	285.0	9.00	268	-17.9	-110			
324	Storage/Transport Area #12	11/2/2006	13	285	7	291	13.0	285.0	7.00	291	-26.9	39			
325	Storage/Transport Area #13	11/2/2006	13	285	18	313	13.0	285.0	18.00	313	22.4	180			
326	Storage/Transport Area #14	11/2/2006	13	285	12	305	13.0	285.0	12.00	305	-4.5	129			
327	Storage/Transport Area #15	11/2/2006	13	285	15	313	13.0	285.0	15.00	313	9.0	180			
328	Storage/Transport Area #16	11/2/2006	13	285	18	306	13.0	285.0	18.00	306	22.4	135			
329	Storage/Transport Area #17	11/2/2006	13	285	13	271	13.0	285.0	13.00	271	0.0	-90			
330	Storage/Transport Area #18	11/2/2006	13	285	17	337	13.0	285.0	17.00	337	17.9	335			
331	Storage/Transport Area #19	11/2/2006	13	285	12	311	13.0	285.0	12.00	311	-4.5	167			
332	Storage/Transport Area #20	11/2/2006	13	285	12	288	13.0	285.0	12.00	288	-4.5	19			
333	Paved Road #1	11/1/2006	9	337	7	342	9.0	337.0	7.00	342	-9.0	32			
334	Paved Road #2	11/1/2006	9	337	7	376	9.0	337.0	7.00	376	-9.0	251			
335	Paved Road #3	11/1/2006	9	337	11	365	9.0	337.0	11.00	365	9.0	180			
336	Paved Road #4	11/1/2006	9	337	8	407	9.0	337.0	8.00	407	-4.5	451			
337	Paved Road #5	11/1/2006	9	337	9	369	9.0	337.0	9.00	369	0.0	206			
338	Paved Road #6	11/1/2006	9	337	10	319	9.0	337.0	10.00	319	4.5	-116			
339	Paved Road #7	11/1/2006	9	337	9	362	9.0	337.0	9.00	362	0.0	161			
340	Paved Road #8	11/1/2006	9	337	8	390	9.0	337.0	8.00	390	-4.5	341			
341	Paved Road #9	11/1/2006	9	337	2	339	9.0	337.0	2.00	339	-31.4	13			
342	Paved Road #10	11/1/2006	9	337	11	328	9.0	337.0	11.00	328	9.0	-58			
343	Paved Road #11	11/1/2006	9	337	7	354	9.0	337.0	7.00	354	-9.0	110			
344	Paved Road #12	11/1/2006	9	337	11	360	9.0	337.0	11.00	360	9.0	148			

Detector Active Area (cm ²)
125

α eff	β eff
0.1785	0.1242

Static Count Time (min)
1.0

Daily Background Count
1.0

dpm/100 cm ²	
α Flag	β Flag
60	1000

* Morning Daily

seq. #	Sample ID# and Description	Date	Background Total Counts*		Sample Total Counts		Background (cpm)		Sample Counts (cpm)		Sample (dpm/100 cm ²)		> α flag	> β flag	Tech. Initial
			α	β	α	β	α	β	α	β					
345	Paved Road #13	11/1/2006	9	337	12	326	9.0	337.0	12.00	326	13.4	-71			
346	Paved Road #14	11/1/2006	9	337	10	390	9.0	337.0	10.00	390	4.5	341			
347	Paved Road #15	11/1/2006	9	337	9	383	9.0	337.0	9.00	383	0.0	296			
348	Paved Road #16	11/1/2006	9	337	6	373	9.0	337.0	6.00	373	-13.4	232			
349	Paved Road #17	11/1/2006	9	337	11	345	9.0	337.0	11.00	345	9.0	52			
350	Paved Road #18	11/1/2006	9	337	8	322	9.0	337.0	8.00	322	-4.5	-97			
351	Paved Road #19	11/1/2006	9	337	12	355	9.0	337.0	12.00	355	13.4	116			
352	Paved Road #20	11/1/2006	9	337	12	337	9.0	337.0	12.00	337	13.4	0			
353	Rail Scale #1	11/1/2006	11	387	7	369	11.0	387.0	7.00	369	-17.9	-116			
354	Rail Scale #2	11/1/2006	11	387	14	372	11.0	387.0	14.00	372	13.4	-97			
355	Rail Scale #3	11/1/2006	11	387	14	393	11.0	387.0	14.00	393	13.4	39			
356	Rail Scale #4	11/1/2006	11	387	17	404	11.0	387.0	17.00	404	26.9	110			
357	Rail Scale #5	11/1/2006	11	387	21	412	11.0	387.0	21.00	412	44.8	161			
358	Rail Scale #6	11/1/2006	11	387	13	405	11.0	387.0	13.00	405	9.0	116			
359	Rail Scale #7	11/1/2006	11	387	13	454	11.0	387.0	13.00	454	9.0	432			
360	Rail Scale #8	11/1/2006	11	387	9	360	11.0	387.0	9.00	360	-9.0	-174			
361	Rail Scale #9	11/1/2006	11	387	13	388	11.0	387.0	13.00	388	9.0	6			
362	Rail Scale #10	11/1/2006	11	387	17	359	11.0	387.0	17.00	359	26.9	-180			
363	Rail Scale #11	11/1/2006	11	387	12	373	11.0	387.0	12.00	373	4.5	-90			
364	Rail Scale #12	11/1/2006	11	387	11	437	11.0	387.0	11.00	437	0.0	322			
365	Rail Scale #13	11/1/2006	11	387	11	363	11.0	387.0	11.00	363	0.0	-155			
366	Rail Scale #14	11/1/2006	11	387	7	350	11.0	387.0	7.00	350	-17.9	-238			
367	Rail Scale #15	11/1/2006	11	387	8	363	11.0	387.0	8.00	363	-13.4	-155			
368	Rail Scale #16	11/1/2006	11	387	10	378	11.0	387.0	10.00	378	-4.5	-58			
369	Rail Scale #17	11/1/2006	11	387	7	382	11.0	387.0	7.00	382	-17.9	-32			
370	Rail Scale #18	11/1/2006	11	387	14	382	11.0	387.0	14.00	382	13.4	-32			
371	Rail Scale #19	11/1/2006	11	387	8	388	11.0	387.0	8.00	388	-13.4	6			
372	Rail Scale #20	11/1/2006	11	387	7	353	11.0	387.0	7.00	353	-17.9	-219			

OP-001-02 Radiological Survey Sheet

Location: Road to Rail Scale RWP# 2123928 Entry Road Survey # PR-1 Survey Type: Static/Smear

Smear Results					
DPM/100cm ²					
No.	α	β	No.	α	β
1	7	342	26		
2	7	376	27		
3	7	365	28		
4	8	407	29		
5	9	366	30		
6	10	519	31		
7	9	362	32		
8	8	390	33		
9	2	229	34		
10	11	328	35		
11	7	398	36		
12	11	510	37		
13	12	326	38		
14	10	390	39		
15	7	383	40		
16	6	373	41		
17	11	545	42		
18	8	222	43		
19	2	355	44		
20	2	337	45		
21			46		
22			47		
23			48		
24			49		
25			50		



1	2123927.7, 525985.6
2	2123928.7, 525983.8
3	2123620.2, 525995.4
4	2123480.0, 526005.3
5	2123328.5, 526012.3
6	2123175.0, 526017.6
7	2123126.4, 526029.6
8	2123851.2, 525979.2
9	2123694.7, 525986.4
10	2123547.5, 525991.9
11	2123401.9, 525998.9
12	2127249.6, 526005.3
13	2123066.9, 526013.9
14	2123927.7, 525966.6
15	2123771.7, 525972.8
16	2123619.3, 525979.3
17	2123480.9, 525986.5
18	2123328.4, 525992.4
19	2123174.8, 525997.5
20	2122926.5, 526011.9

Comments

Surveyed By: Greg B Date: 11/1/06

Instrument	Serial #	α Eff.	β Eff.	α Bkg.	β Bkg.	Cal. Due
43-89	71381					
2224-1	162720					

Reviewed By: _____ Date: _____

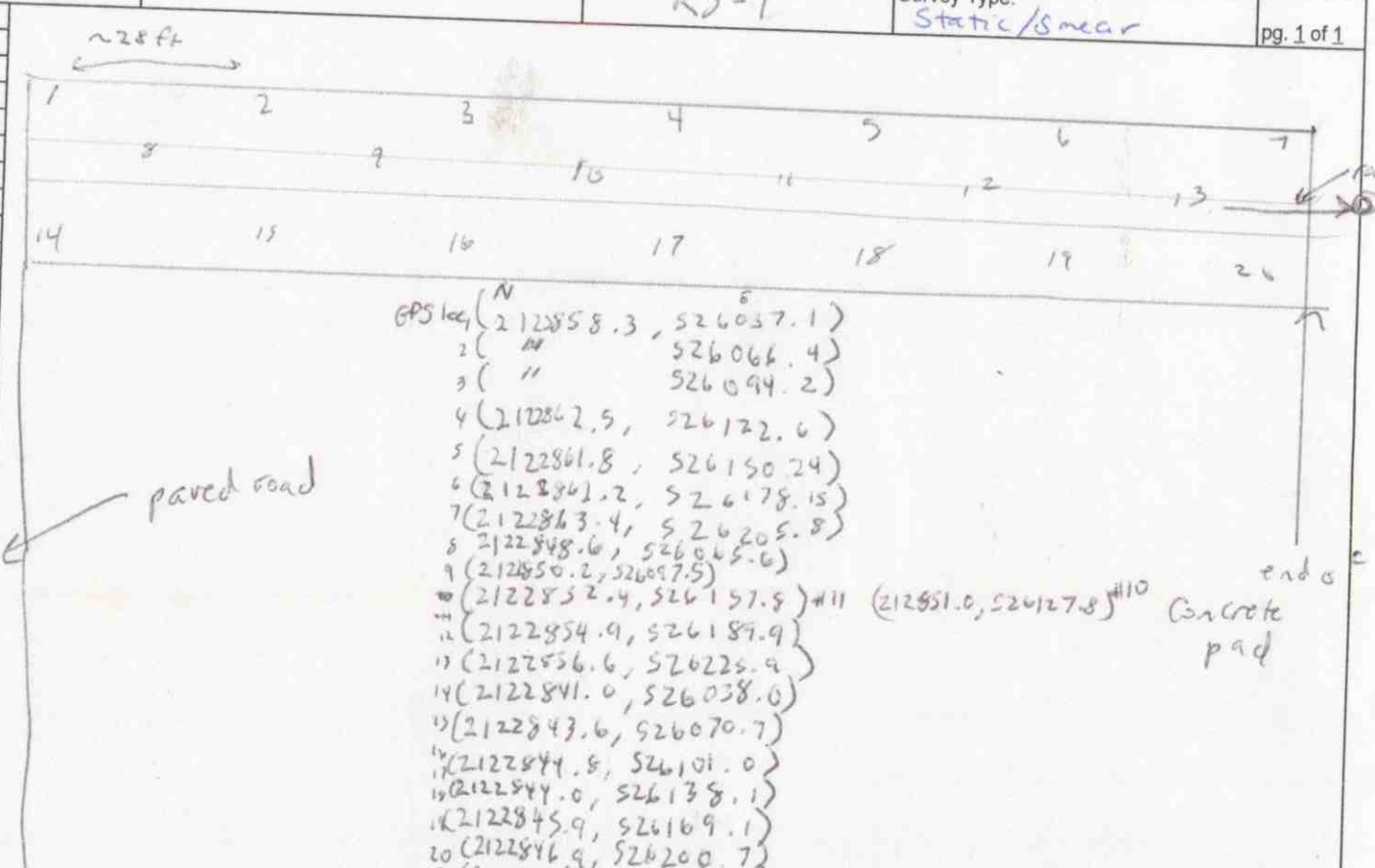
Key			
○	Smear	*-*	Boundary
□	Dose Rate m/hr	■	A/S Location
*	Direct Reading DPM/100 cm ²		
△	Grab Sample		

OP-001-02 Radiological Survey Sheet

Location: RailScale RWP# _____ Survey # RS-1 Survey Type: Static/Smear pg. 1 of 1

Smear Results
DPM/100cm²

No.	α	β	No.	α	β
1	9	389	26		
2	24	372	27		
3	10	399	28		
4	17	404	29		
5	21	412	30		
6	13	409	31		
7	13	454	32		
8	9	360	33		
9	13	383	34		
10	17	359	35		
11	22	373	36		
12	11	457	37		
13	11	363	38		
14	7	350	39		
15	8	366	40		
16	10	378	41		
17	7	382	42		
18	14	382	43		
19	8	388	44		
20	7	353	45		
21			46		
22			47		
23			48		
24			49		
25			50		



Comments

Surveyed By: Greg Bright Date: 11/1/06

Reviewed By: _____ Date: _____

Instrument	Serial #	α Eff.	β Eff.	α Bkg.	β Bkg.	Cal. Due	Key			
43-89	71381						<input type="checkbox"/>	Smear	*.*	Boundary
224-1	162420						<input type="checkbox"/>	Dose Rate m/hr	■	A/S Location
							*	Direct Reading DPM/100 cm ²		
							△	Grab Sample		

OP-001-02 Radiological Survey Sheet

Location: <i>Shrinkwrap Area (next to car) office</i>		RWP#	Survey # <i>SW-2</i>	Survey Type: <i>static/smear</i>	pg. 1 of 1							
Smear Results DPM/100cm ²												
No.	α					β	No.	α	β			
1	11					303	26					
2	10					357	27					
3	14					285	28					
4	15					288	29					
5	16					307	30					
6	24					356	31					
7	20					384	32					
8	9					249	33					
9	12					296	34					
10	13					253	35					
11							36					
12							37					
13							38					
14							39					
15							40					
16							41					
17							42					
18							43					
19							44					
20							45					
21							46					
22							47					
23							48					
24							49					
25			50									
Comments		<p>1) 212224.7, 525501.6 5) 2122236.7, 525433.7)</p> <p>2) 2122258.9, 525501.6 6) 2122251.7, 525433.7)</p> <p>3) 2122244.9, 525468.6 7) 2122234.6, 525398.2)</p> <p>4) 2122259.8, 525468.8 8) 2122290.6, 525318.2)</p> <p>9) 2122237.8, 525347.9)</p> <p>10) 2122253.8, 525347.9)</p>										
Surveyed By: <i>Greg B. Dawck</i>	Date: <i>11/2/06</i>	Instrument	Serial #	α Eff.	β Eff.	α Bkg.	β Bkg.	Cal. Due	Key			
		<i>43-89</i>							○	Smear	*-*	Boundary
		<i>2224-1</i>							□	Dose Rate m/hr	■	A/S Location
Reviewed By:	Date:								*	Direct Reading DPM/100 cm ²		
									△	Grab Sample		

OP-001-02 Radiological Survey Sheet

Location: <i>Storage Area (South Side of Depot)</i>		RWP#	Survey # <i>ST-1</i>	Survey Type: <i>Static Smear</i>	pg. 1 of 1							
Smear Results		<p style="text-align: right; margin-right: 50px;"><i>fence</i></p> <p style="text-align: right; margin-right: 20px;"><i>ballast</i></p> <p style="text-align: left; margin-left: 20px;"><i>ditch</i></p>										
DPM/100cm ²												
No.	α					β	No.	α	β			
1	12					313	26					
2	5					299	27					
3	16					285	28					
4	15					265	29					
5	6					274	30					
6	13					289	31					
7	31					259	32					
8	13					227	33					
9	16					251	34					
10	16					307	35					
11	9					268	36					
12	7					291	37					
13	18					313	38					
14	12					303	39					
15	5					313	40					
16	18					286	41					
17	13					271	42					
18	17					337	43					
19	12					311	44					
20	2					233	45					
21							46					
22							47					
23							48					
24			49									
25			50									
Comments		<p>1) (2122268.9, 52602.0) 2) (2122273.7, 52609.1) 3) (2122272.09, 525980) 4) (2122267.3, 525941.3)</p> <p>5) (2122262.9, 52602.0) 6) (2122279.7, 52601.4) 7) (2122278.09, 525980) 8) (2122263.3, 525941.3)</p> <p>9) (2122262.09, 525980)</p> <p>10) (2122268.09, 525960)</p> <p>11) (2122256.4, 525907.9) 12) (2122274.9, 525873.5) 13) (2122258.9, 525795.0)</p> <p>14) (2122262.4, 525907.9) 15) (2122266.9, 525838.6) 16) (2122251.6, 525750.0)</p> <p>17) (2122268.9, 525873.5) 18) (2122272.5, 525838.6) 19) (2122257.6, 525751.0)</p> <p>20) (2122252.9, 525795.0)</p>										
Surveyed By:	Date:	Instrument	Serial #	α Eff.	β Eff.	α Bkg.	β Bkg.	Cal. Due	Key			
<i>Greg B/Dave K.</i>	<i>11/2/06</i>	<i>43-59</i>	<i>2224-7</i>						○	Smear	*-*	Boundary
Reviewed By:	Date:								□	Dose Rate m/hr	■	A/S Location
									*	Direct Reading DPM/100 cm ²		
									△	Grab Sample		

New Haven Depot Biased Sample Locations

Number	SU	Northing	Easting	44-20 1 min Static	Notes
				Gamma (cpm)	
1	1	2123908.50	525051.08	24958	
2	1	2123911.13	525088.69	31581	
3	1	2123913.76	525126.31	33624	
4	1	2123916.39	525163.93	30534	
5	1	2123919.02	525201.55	31274	
6	1	2123877.24	525072.16	35772	
7	1	2123879.87	525109.78	30013	
8	1	2123882.50	525147.40	31989	
9	1	2123885.13	525185.02	39661	
10	1	2123887.13	525218.53	33734	
11	1	2123843.35	525055.63	24408	
12	1	2123845.98	525093.25	19443	
13	1	2123848.61	525130.87	33208	
14	1	2123851.24	525168.49	22703	
15	1	2123853.87	525206.11	19072	
16	1	2123812.08	525076.72	27849	
17	1	2123814.71	525114.34	29777	
18	1	2123823.08	525152.05	30802	
19	2	2123920.33	525219.32	28935	
20	2	2123922.99	525256.26	29128	
21	2	2123925.65	525294.35	25522	
22	2	2123928.32	525332.44	30446	
23	2	2123930.98	525370.52	34045	
24	2	2123933.35	525404.58	32106	
25	2	2123888.67	525239.53	24908	
26	2	2123891.34	525277.61	20226	
27	2	2123894.00	525315.70	27014	
28	2	2123896.66	525353.79	22215	
29	2	2123899.33	525391.87	45129	
30	2	2123854.36	525224.07	20654	
31	2	2123857.02	525260.88	21852	
32	2	2123859.68	525298.96	25705	
33	2	2123862.35	525337.05	25483	
34	2	2123865.01	525375.14	19391	
35	2	2123867.39	525408.05	24481	
36	3	2123961.56	525455.67	22762	
37	3	2123936.73	525437.15	30991	
38	3	2123936.73	525475.10	28818	
39	3	2123936.73	525513.05	29587	
40	3	2123936.73	525551.00	30546	
41	3	2123936.73	525588.95	29996	
42	3	2123903.87	525418.18	22733	
43	3	2123903.87	525456.13	25043	
44	3	2123903.87	525494.08	21416	
45	3	2123903.87	525532.03	21614	
46	3	2123903.87	525569.98	23760	
47	3	2123903.50	525596.72	33133	
48	3	2123871.00	525437.15	20770	
49	3	2123871.00	525475.10	24992	
50	3	2123871.00	525513.05	29395	
51	3	2123871.00	525551.00	24034	

New Haven Depot Biased Sample Locations

Number	SU	Northing	Easting	44-20 1 min Static Gamma (cpm)	Notes
52	3	2123871.00	525588.95	32652	
53	3	2123842.58	525417.91	37348	
54	3	2123843.65	525456.38	45347	

New Haven Depot Biased Sample Locations

Number	SU	Northing	Easting	44-20 1 min Static Gamma (cpm)	Notes
55	1	2123845.49	525102.85	97762	Baddeleyite rocks found. 50 kcpm remaining in area of sample
56	1	2123860.22	525181.71	81895	Baddeleyite rocks found. 45-50 kcpm remaining in area of sample
57	1	2123870.89	525215.68	164997	Large Baddeleyite rock found. >500k cpm measured in open borehole
58	2	2123941.67	525272.58	123626	Many Baddeleyite ore rocks removed. >100k cpm measured in open borehole
59	2	2123904.95	525290.41	380705	Area has very small Baddeleyite pebbles dispersed in soil. ~400 kcpm remaining.
60	2	2123936.53	525308.09	277242	Baddeleyite rocks found and removed. 55-60k cpm remaining
61	2	2123893.05	525392.66	65445	
62	3	2123915.2	525414.01	223088	Baddeleyite rocks found and removed. 45-55k cpm remaining
63	3	2123854.77	525453.1	101554	Baddeleyite rock found and removed. ~35-40k cpm remaining
64	3	2123841.07	525457.94	72404	Baddeleyite rocks found and removed. >80k cpm measured over open hole
65	3	2123847.11	525474.46	136047	Baddeleyite rocks found and removed. 50-60k cpm remaining
66	3	2123845.09	525502.27	168980	Dug to 12". No noticeable rocks observed. Count rates continued to elevate as hole depth increased. 120 kcpm measured. Hole recharged with groundwater post-sampling.
67	3	212866.45	525505.89	61928	~35-40k cpm remaining. Distributed. No ore rocks found.
68	3	2123891.03	525515.16	92374	Large surface baddeleyite rock found. Nothing measurable underneath.
69	3	2123941.81	525508.31	128917	
70	3	2123968.41	525516.37	93815	
71	3	2123968.41	525575.21	110197	
72	3	2123903.87	525600	338897	Very large baddeleyite rock found in rocks above concrete drain outfall (>900k cpm contact). Nothing measurable underneath.

New Haven Depot Buffer Area Locations

Former Number	New Number	SU	Northing	Easting	44-20 1 min Static Gamma (cpm)	Notes
1	73	4	2123950.23	525037.68	25275	
2	74	4	2123951.74	525091.66	30178	
3	75	4	2123953.25	525145.64	29315	
4	76	4	2123954.76	525199.62	29566	
5	77	4	2123956.26	525253.60	28608	
6	78	4	2123957.77	525307.58	34082	
7	79	4	2123959.28	525361.56	33026	
8	80	4	2123960.79	525415.54	22932	
9	81	4	2123963.80	525523.49	31073	
10	82	4	2123965.31	525577.47	31695	
11	83	4	2123919.32	525605.77	33217	
12	84	4	2123825.82	525608.38	36198	
13	85	4	2123824.31	525554.40	32926	
14	86	4	2123822.81	525500.42	31669	
15	87	4	2123821.30	525446.44	33172	
16	88	4	2123819.79	525392.46	30026	
17	89	4	2123818.28	525338.48	29979	
18	90	4	2123816.78	525284.51	32110	
19	91	4	2123815.27	525230.53	29269	
20	92	4	2123813.76	525176.55	31217	
21	93	4	2123763.24	525042.91	28001	
22	94	4	2123809.24	525014.61	22346	
23	95	4	2123856.74	525040.29	23092	
24	96	4	2123902.73	525012.00	22857	

New Haven Depot Reference Area Locations

Former Number	New Number	SU	Northing	Easting	44-20 1 min Static Gamma (cpm)	Notes
4	100	5	2124518.30	525830.20	27366	
3	99	5	2124518.30	525778.07	30197	
2	98	5	2124518.30	525725.94	31049	
1	97	5	2124518.30	525882.20	28823	
6	102	5	2124473.15	525699.88	15187	
7	103	5	2124473.15	525752.01	30178	
8	104	5	2124473.15	525804.14	30731	
13	109	5	2124428.01	525830.20	28007	
12	108	5	2124428.01	525778.07	29308	
11	107	5	2124428.01	525725.94	30263	
10	106	5	2124428.01	525882.20	31668	
15	111	5	2124382.86	525699.88	29429	
16	112	5	2124382.86	525752.01	27847	
17	113	5	2124382.86	525804.14	24520	
5	101	5	2124473.15	525898.40	28858	
9	105	5	2124474.02	525847.62	28865	
18	114	5	2124384.59	525850.22	27578	
14	110	5	2124382.86	525898.40	27907	
19	115	5	2124543.30	525752.01	28734	
20	116	5	2124544.30	525804.14	29741	
	120	5	2124387.84	525713.32	31154	

Changed Location (not mowed)

New Haven Depot Entry Road Soil Locations

Number	SU	Northing	Easting	44-20 1 min Static Gamma (cpm)	Notes
117	4	2123918.30	525606.80	41853	
118	4	2123921.60	525606.70	42158	

New Haven Depot Reference Area Locations

Number	SU	Northing	Easting	44-20 1 min Static Gamma (cpm)	Notes
119	8	2122866.90	526154.10	37415	

\