

ENERCON SERVICES, INC.
An Employee Owned Company

6525 N. Meridian, Suite 503
Oklahoma City, OK 73116
(405) 722-7693
Fax: (405) 722-7694

June 20, 2007

Mr. Lloyd E. Inmon
U.S. Fish and Wildlife Service
Jackson Field Office
6578 Dogwood View Parkway, Suite A
Jackson, MS 39213

Subject: Grand Gulf Nuclear Station
COL Application
Request for Information on Rare, Threatened, and Endangered
Species along a Proposed Transmission Corridor

Dear Mr. Inmon:

I earlier corresponded with you concerning endangered species in the vicinity of the existing Grand Gulf Nuclear Station in Claiborne County, Mississippi. As part of the application for a combined operating license to the U.S. Nuclear Regulatory Commission (USNRC) to construct and operate a new nuclear unit at the existing station, we will describe a new electrical power transmission line now planned to generally follow the corridor illustrated on the attached drawings (Plates 1-4).

Once exited the station, the line will occupy a right-of-way about 200 feet wide, follow the route shown through Warren and Hinds Counties, and then turn east to parallel an existing transmission line in Hinds County for a total distance of about 49 miles.

In accord with USNRC's regulations for submitting a COL Application, we are currently preparing an Environmental Report (ER). Among other key issues, the ER will assess the construction and operational impact, if any, on "important species" including those that are state or federally listed (or proposed for listing) as threatened or endangered species or as species of special concern.

Preliminary research indicates that the legally-protected endangered species that might occur in the area of the new transmission line are those listed in Table 1.

U.S. Fish and Wildlife Service
June 20, 2007
Page 2

Please advise if we should consider any other species under your legal jurisdiction in our analysis. Additionally, please provide us with any information in your possession showing known occurrences of the species in the project area.

Thank you very much for your support and continued assistance. Please call or email me if you have any questions concerning this request.

Sincerely,

Dr. William P. Wenstrom
Wildlife Biologist
bwenstrom@enercon.com
719-846-7457

Attachments: Grand Gulf Nuclear Station Proposed Transmission Corridor
Right-of-Way (Plates 1-4)

Table 1 – Endangered Species Potentially Occurring in the
Area of the Grand Gulf Nuclear Station Transmission
Corridor, Claiborne, Warren, and Hinds Counties, Mississippi

Table 1

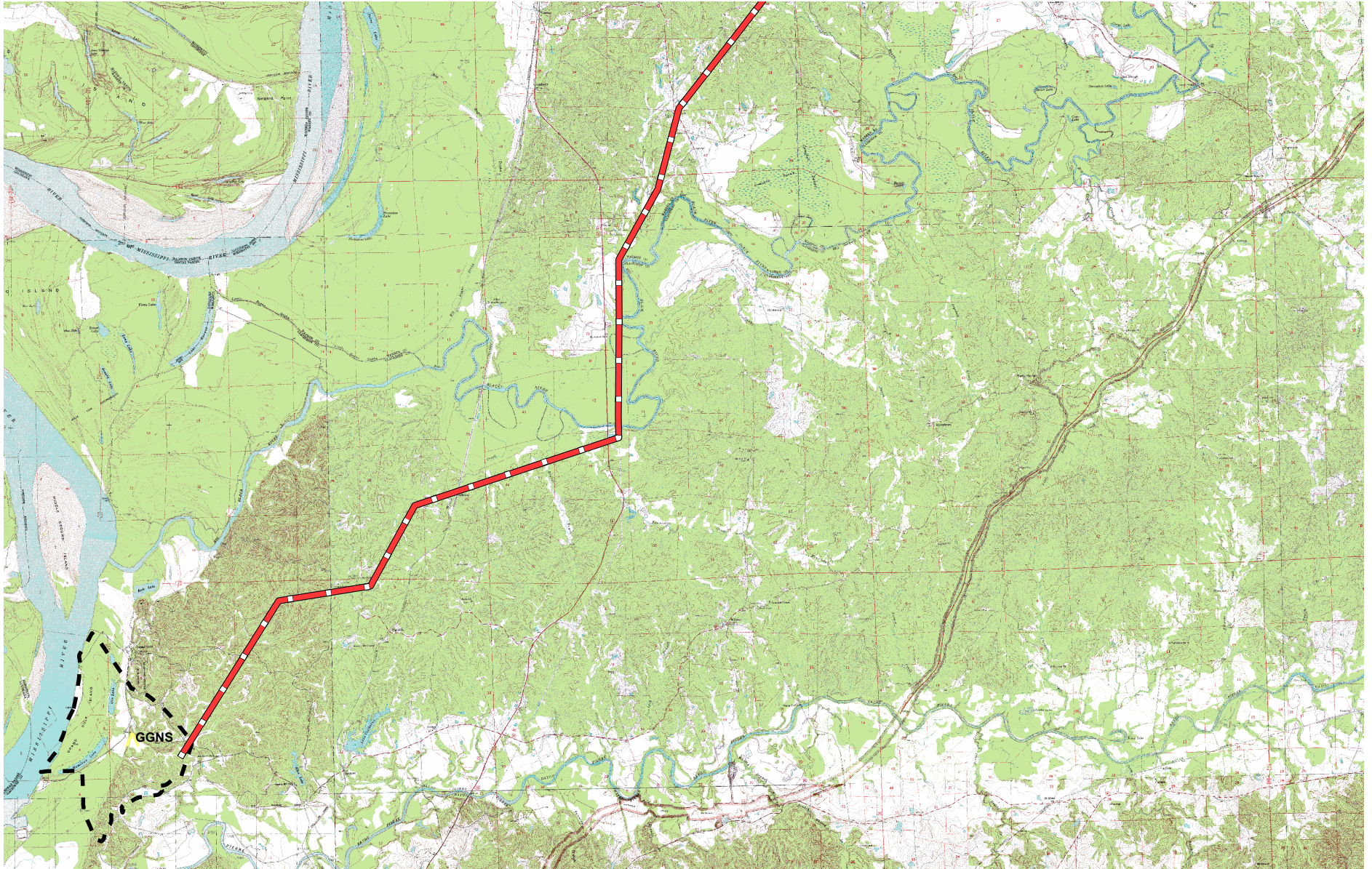
Endangered Species Potentially Occurring in the Area of the Grand Gulf Nuclear Station Transmission Corridor, Claiborne, Warren, and Hinds Counties, Mississippi

Species Group	Common Name	Scientific Name	Federal Status*	State Status**
Birds	Wood stork	<i>Mycteria americana</i>		E
	Peregrine falcon	<i>Falco peregrinus</i>		E
	Bald eagle	<i>Haliaeetus leucocephalus</i>	T	T
	Interior least tern	<i>Sterna antillarum athalassos</i>	E	E
	Bewick's wren	<i>Thryomanes bewickii</i>		E
Fish	Crystal darter	<i>Crystallaria asprella</i>		E
	Bayou darter	<i>Etheostoma rubrum</i>	T	E
	Pallid sturgeon	<i>Scaphirhynchus albus</i>	E	E
	Southern redbelly dace	<i>Phoxinus erythrogaster</i>		E
Mammals	Florida panther	<i>Puma concolor coryi</i>	E	E
	Louisiana black bear	<i>Ursus americanus luteolus</i>	T	E
Mussels	Pyramid pigtoe	<i>Pleurobema rubrum</i>		E

* Federal Status: E = Endangered; T = Threatened

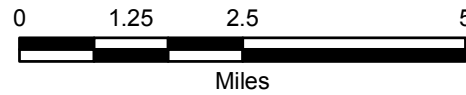
** State Status: E = Endangered; T = Threatened

Grand Gulf Nuclear Station Proposed Transmission Corridor Right-of-Way Location (Plate 1 of 4)

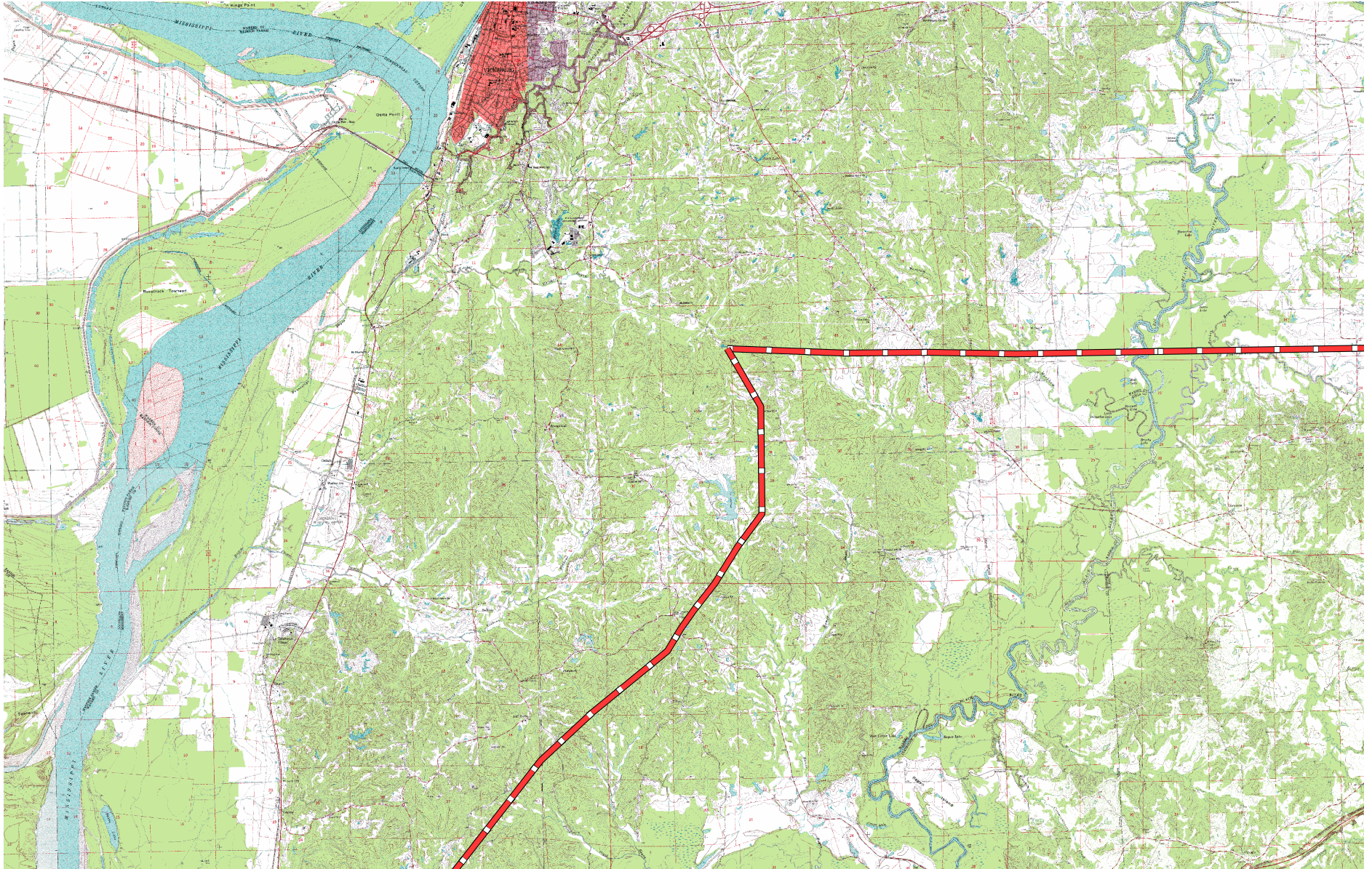


Legend

— Transmission Right-of-Way



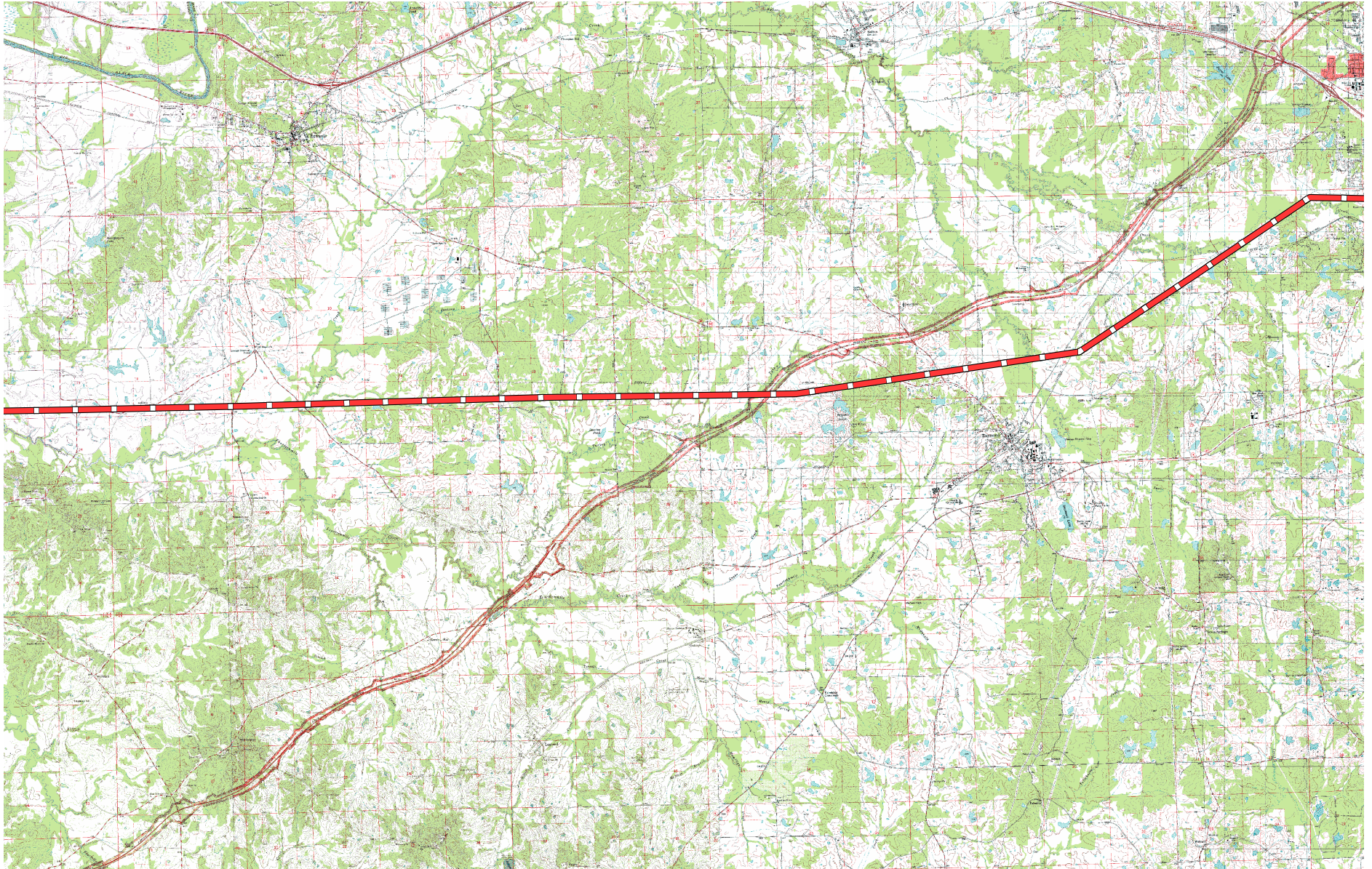
Grand Gulf Nuclear Station Proposed Transmission Corridor Right-of-Way Location (Plate 2 of 4)



Legend
— Transmission Right-of-Way



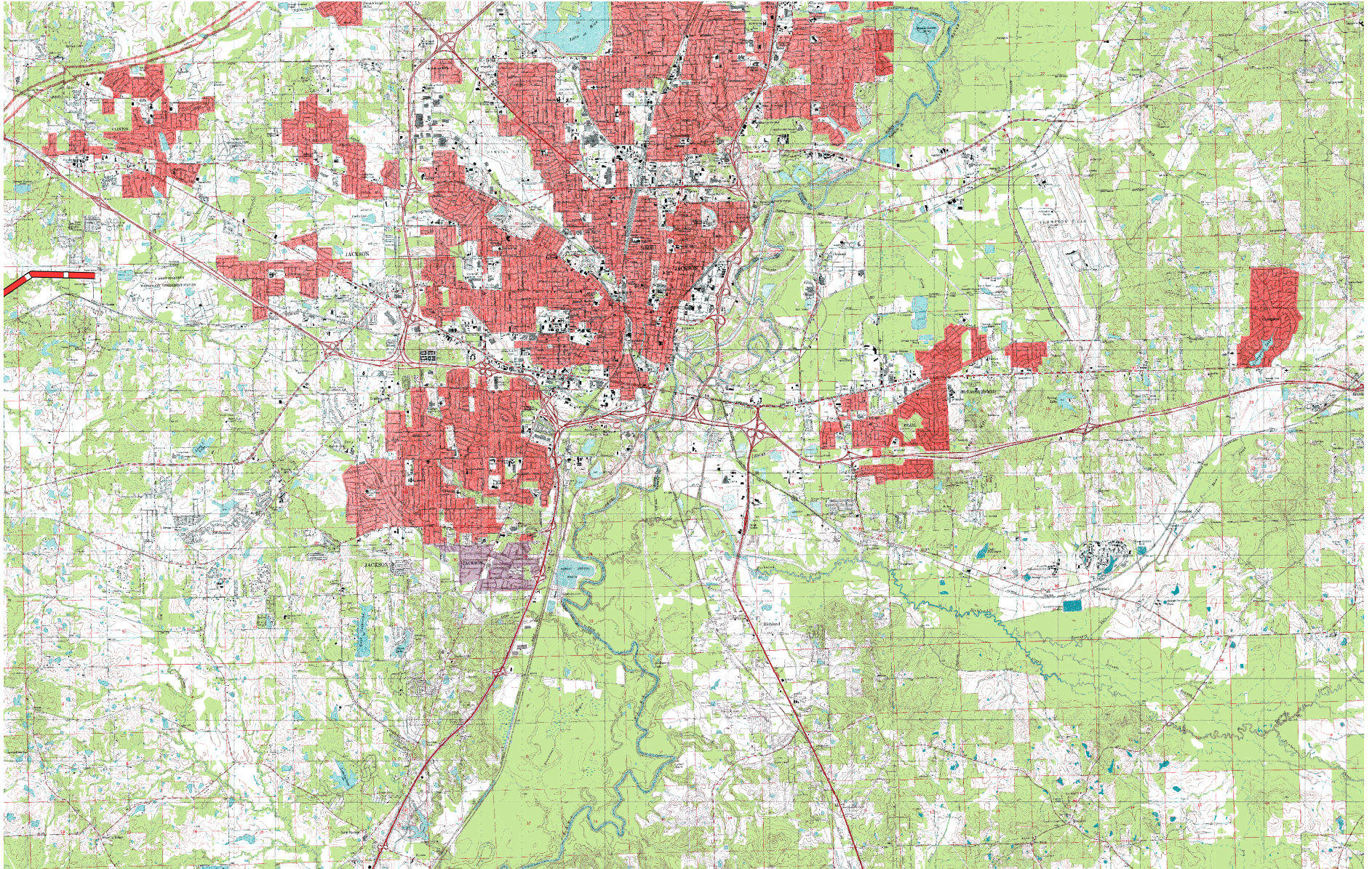
Grand Gulf Nuclear Station Proposed Transmission Corridor Right-of-Way Location (Plate 3 of 4)



Legend
— Transmission Right-of-Way



Grand Gulf Nuclear Station Proposed Transmission Corridor Right-of-Way Location (Plate 4 of 4)



Legend
Transmission Right-of-Way

