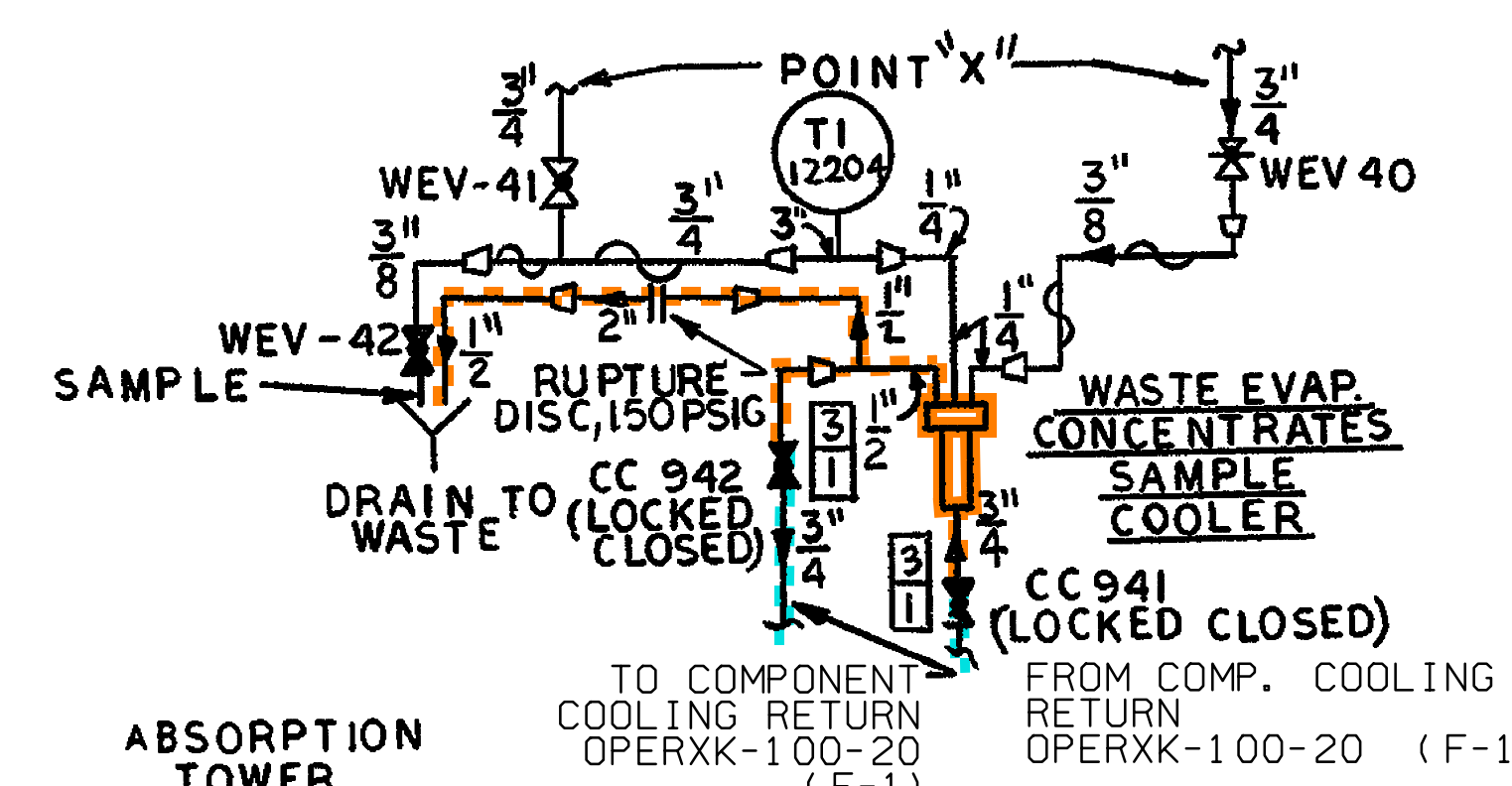


1	EVAP STEAM INLET
2	CONDENSATE OUTLET
3	EVAP COND COOLING WTR INLET
4	EVAP COND COOLING WTR OUTLET
5	DISTILLATE COOLING WATER INLET
6	DISTILLATE COOLING WATER OUTLET
7	WASTE FEED INLET
8	CONCENTRATED WASTE OUTLET
9	DISTILLATE OUTLET
10	CONDENSER VENT (TO PLANT VENT)
11	DRAIN CONN. (EVAP COND)
12	EVAP TOWER VENT (TO PLANT VENT)
13	FLUSH CONN. (ABSORPTION TOWER)
14	EVAP DRAIN
15	EVAP FLUSH INLET
16	NITROGEN SUPPLY
17	DISTILLATE SAMPLE LINE (OUTLET)
18	RUPTURE DISC (SIZE BASED ON 0 PSIG BACK PRESS)
19	CONCENTRATE SAMPLE (OUT)
20	CONCENTRATE SAMPLE (IN)
21	DRAIN CONN. (DISTILLATE PUMP)
22	DRAIN CONN. (CONCENTRATE PUMP)
23	FLUSH CONN. (CONCENTRATE PUMP)
24	FLUSH CONN. (EVAP COND)
25	FLUSH CONN. (EVAP COND)
26	DISTILLATE SAMPLE LINE INLET
27	DISTILLATE VENT
28	BOSSEY FOR FIELD TESTING (1/8" NPT PLUGGED)



- NOTE**
- LINE HEAT TRACED BY OTHERS
 - ALL LINES MARKED * ARE CLASS 151R. THIS IS A DESIGNATION ONLY & NO ADDITIONAL INSPECTION HAS BEEN PERFORMED ON THIS PIPING. ALL OTHER PIPE IS CLASS 151R.
 - T.P. INDICATES "TERMINAL POINT"
 - PIPED TO AUX. BLDG NORMAL VENT
 - ROOT VALVE NUMBERS WILL NOT BE SHOWN ON THIS DRAWING. THE OPERATION VALVE NUMBER CONTAINS THE SYSTEM DESIGNATOR FOLLOWED BY THE INSTRUMENT NUMBER (I.E., SW-11007).

