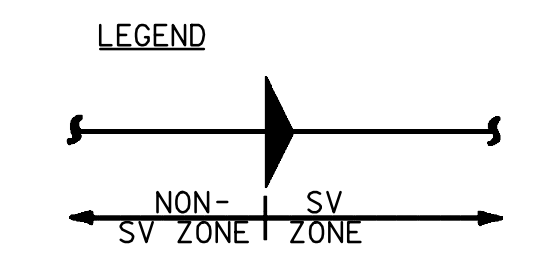
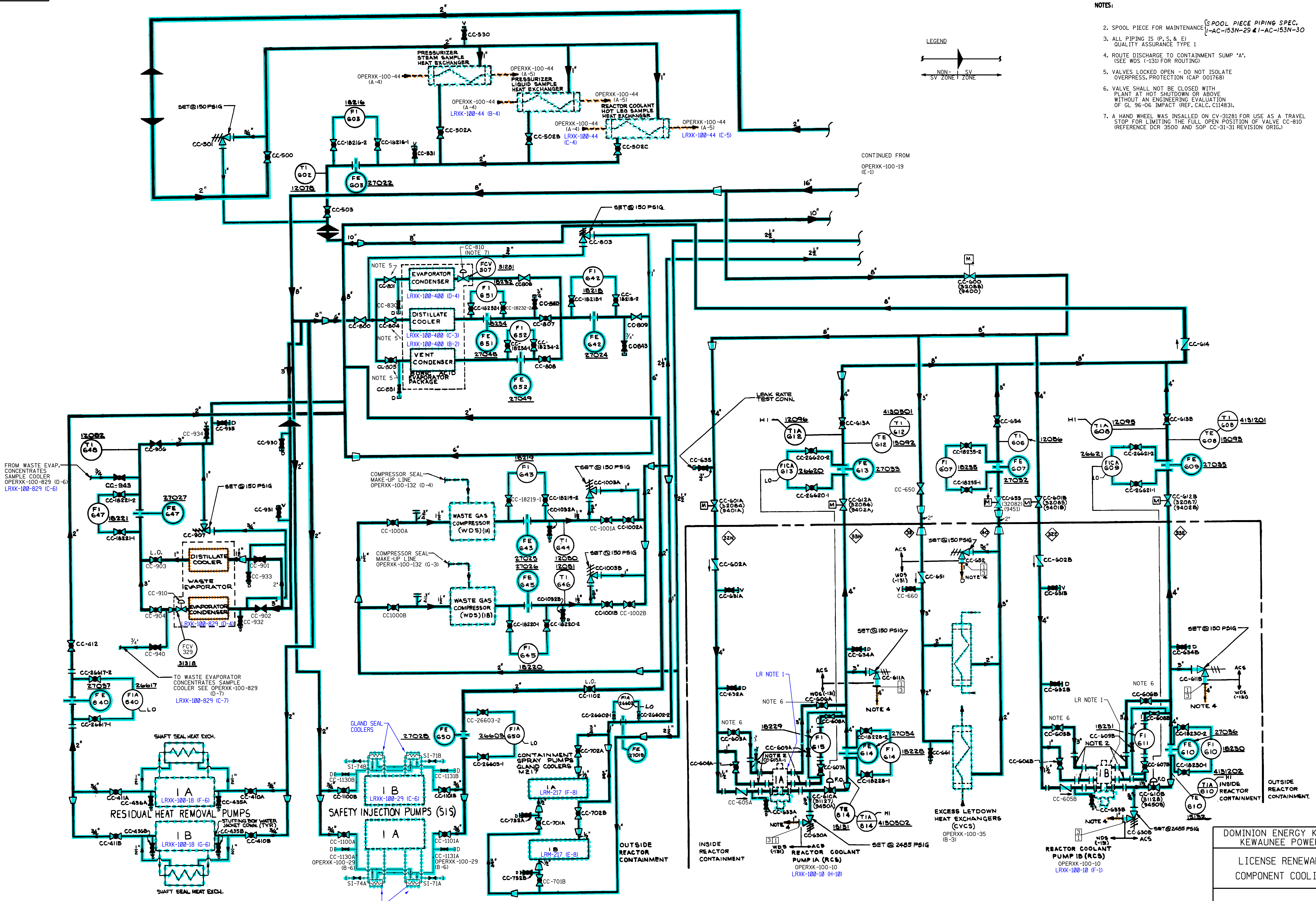


- NOTES:
2. SPOOL PIECE FOR MAINTENANCE [SPOOL PIECE PIPING SPEC. 1]-AC-153N-29 & 1-AC-153N-30
 3. ALL PIPING IS (P, S, & E) QUALITY ASSURANCE TYPE 1
 4. ROUTE DISCHARGE TO CONTAINMENT SUMP "A". (SEE WDS (-131) FOR ROUTING)
 5. VALVES LOCKED OPEN - DO NOT ISOLATE OVERPRESS. PROTECTION (CAP 001768)
 6. VALVE SHALL NOT BE CLOSED WITH PLANT AT HOT SHUTDOWN OR ABOVE WITHOUT AN ENGINEERING EVALUATION OF GL 96-06 IMPACT (REF. CALC. C11483).
 7. A HAND WHEEL WAS INSTALLED ON CV-31281 FOR USE AS A TRAVEL STOP FOR LIMITING THE FULL OPEN POSITION OF VALVE CC-810 (REFERENCE DGR 5500 AND SOP CC-31-31 REVISION ORIG.)



CONTINUED FROM
OPERXK-100-19
(E-1)



LR NOTES:

1. RC PUMP MOTORS ARE ACTIVE BUT THE MOTORS UPPER AND LOWER BEARING OIL COOLERS (WHICH ARE NOT SHOWN ON THIS DRAWING) ARE PASSIVE AND ARE INCLUDED IN LR SCOPE FOR THE RC SYSTEM.

LICENSE RENEWAL DRAWING LEGEND

	31/CC COMPONENT COOLING
	23/ICS CONTAINMENT VESSEL INTERNAL SPRAY
	32A/WD-LJ LIQUID WASTE PROCESSING AND DISCHARGE
	32B/WD-G) GASEOUS WASTE PROCESSING AND DISCHARGE
	33/SI SAFETY INJECTION
	34/RHR RESIDUAL HEAT REMOVAL
	35/CVC CHEMICAL & VOLUME CONTROL
	36/RC REACTOR COOLANT
	37/PS PRIMARY SAMPLING

DOMINION ENERGY KEWAUNEE, INC.
KEWAUNEE POWER STATION

LICENSE RENEWAL DRAWING
COMPONENT COOLING SYSTEM

APPROVED	DRAWN	DWG. NO.	REV.
REVIEWED	SCALE	LRXK-100-20	0

HYBRID CADD

REV 'AC' PER LAST UPDATE